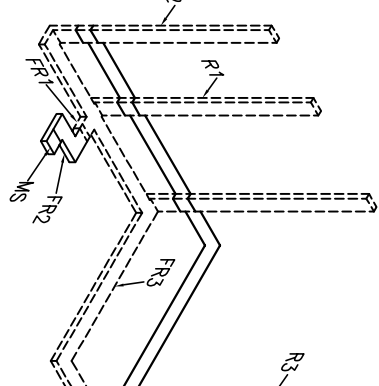


PARTIAL FLOOR PLAN OF
BUILDING 28 FIRST FLOOR



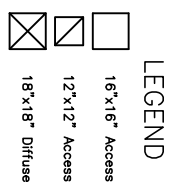
RACEWAY DIAGRAM (Not To Scale)

(Not To Scale)

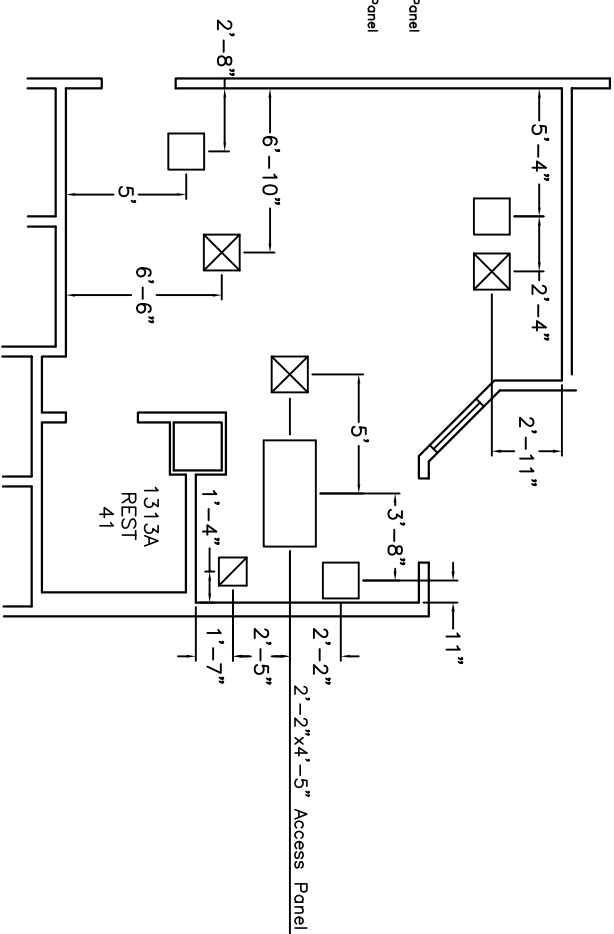
1. The use of 90 degree ells is not acceptable; use 45 degree bends at all raceway corners. The use of crossover tunnels at all applicable location is required.

GENERAL NOTES

1. Davis/Bacon wage rates to apply.
2. Contractor to field verify all dimensions.
3. This job to be phased to accommodate daily activity.
4. Patch and repair all areas where demo occurs.
5. Any visible conditions not included on this drawing shall be included.

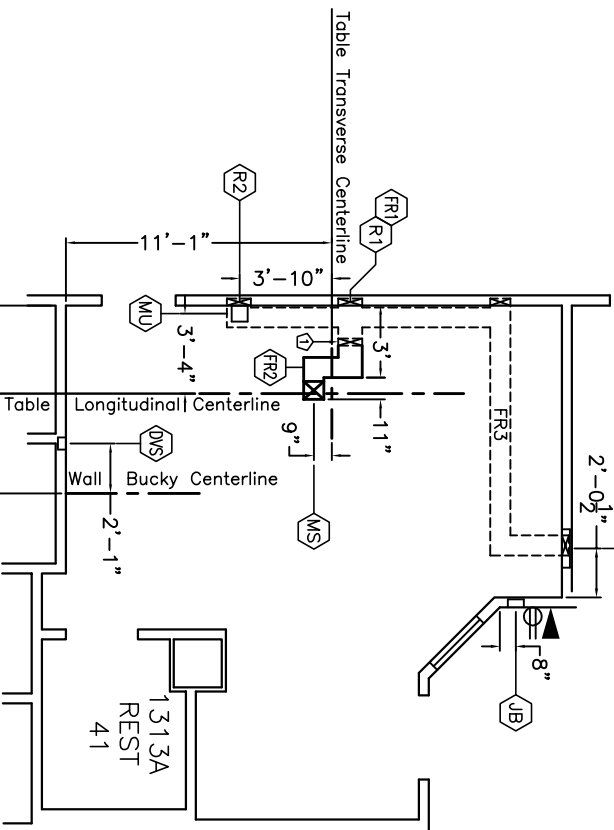


LEGEND

HVAC PLAN
Scale: 1/8" = 1'-0"

Scale: 1/8" = 1'

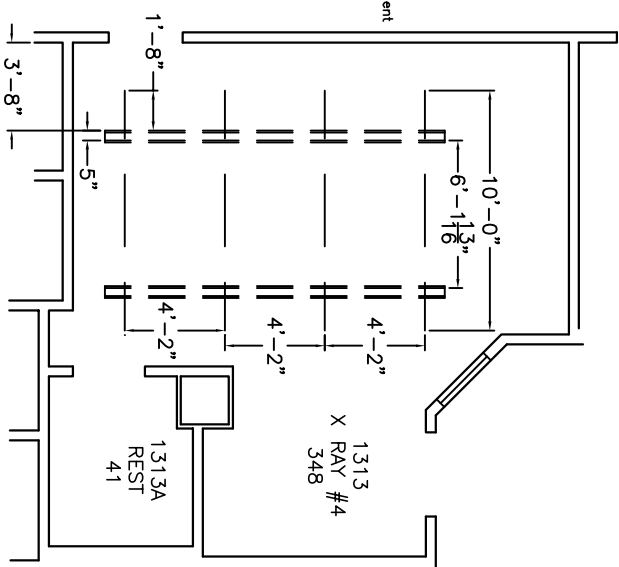
1. HVAC diffuser to be installed as shown and balanced as needed.
2. Reinstall access panels as shown.



ELECTRICAL PLAN

Scale: $1/8" = 1'$

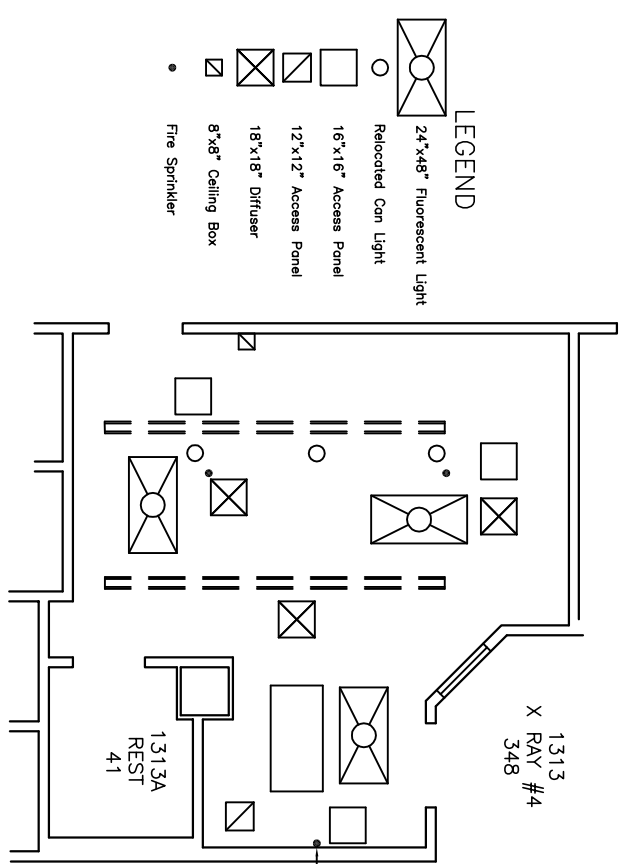
1. Close riser duct to allow for new trench raceway.
2. Patch floor where close riser duct was located.



TUBE SUPPORT INSTALLATION

Scale: $1/8" = 1'$

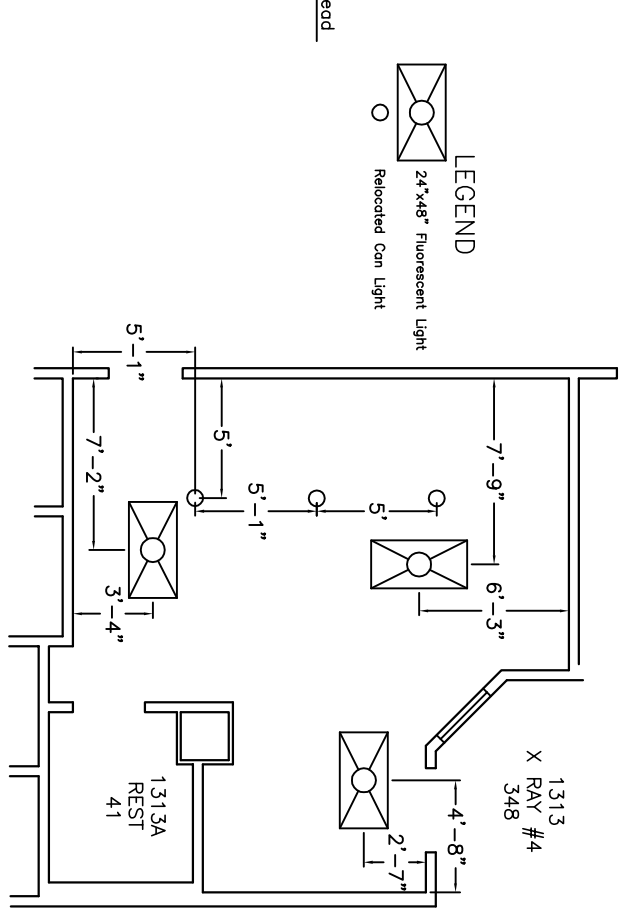
1. Phillips equipment mounting shown for reference only.
2. New support rolls to be Unistrut P1001 or approved equal.
3. Fastener mounting to be 1/4" above bottom of the Unistrut.
4. Phillips mounting equipment is designed for P1001 Unistrut.
5. Inside of roll must be clear of all obstruction (including paint).
6. Tension Force is 326 lbs. per support.
7. Shear Force is 585 lbs. per support.



REFLECTED CEILING PLAN

Scale: 1/8" = 1'

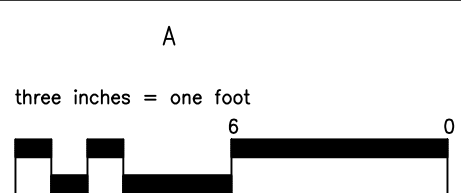
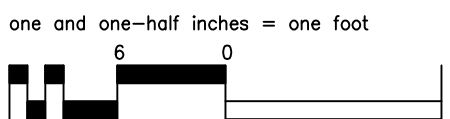
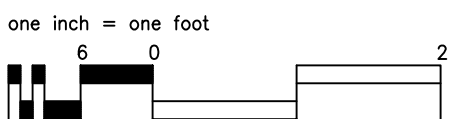
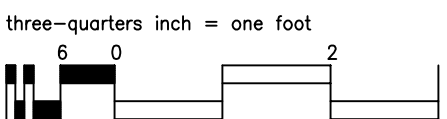
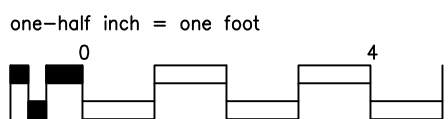
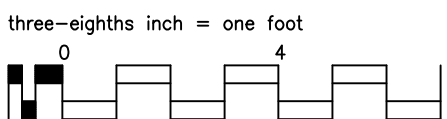
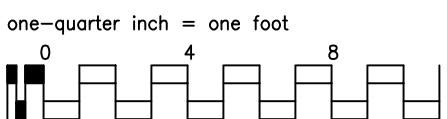
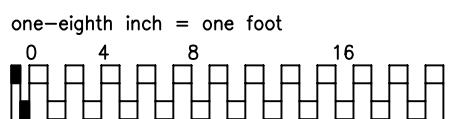
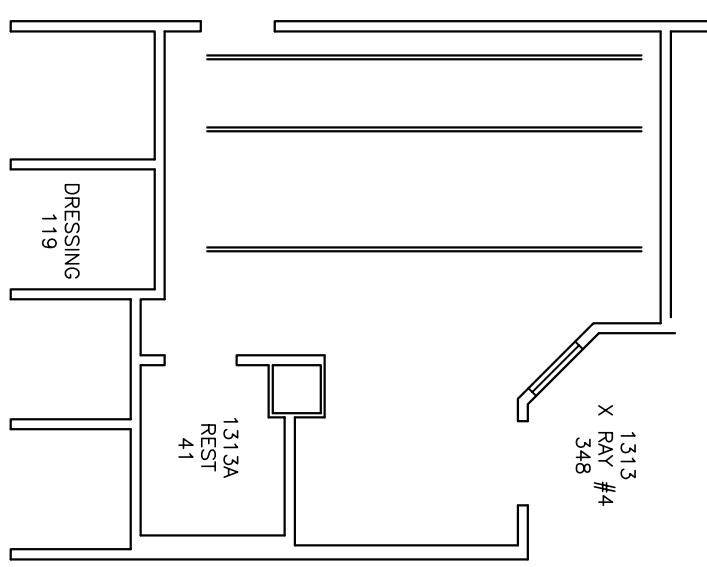
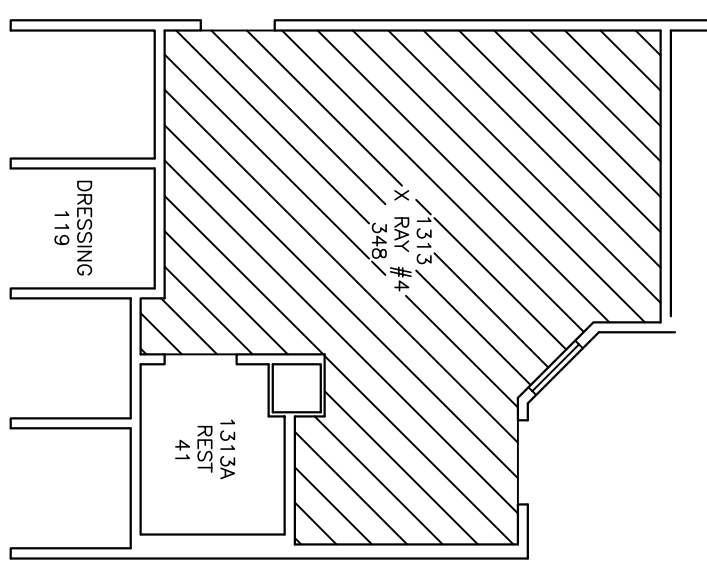
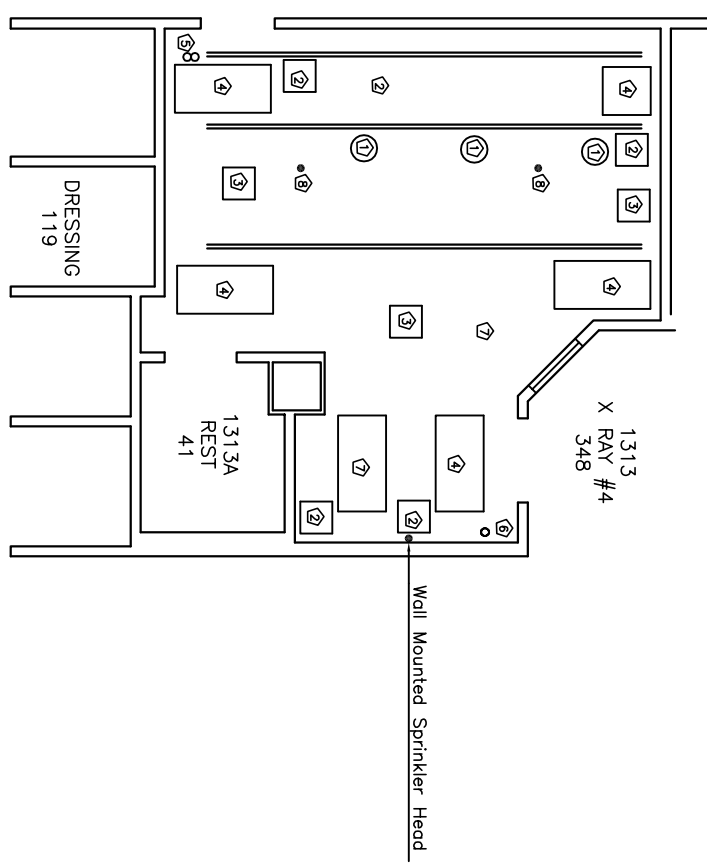
1. Finished ceiling to be 1/4" above bottom of the Unistrut.
2. Refer to other plans for location of each item.



LIGHTING PLAN
Scale: 1/8" = 1'

Scale: $1/8" = 1'$

1. Reinstall can lights as shown.
2. Reinstall fluorescent lights as shown

[illegible]

General Information		Contract Required	
<p>1. All contract costs must take most direct route path to point.</p> <p>2. All contract costs must show a full path.</p>			
<p>Contract supplied and installed by contractor - implies dates initiated by Prologis.</p> <p>Contract supplied and installed by contractor - implies dates initiated by Prologis.</p> <p>Contract supplied and installed by contractor - implies dates initiated by contractor.</p> <p>Contract supplied by Prologis and installed by contractor.</p> <p>Contract supplied by contractor and installed by Prologis.</p> <p>Contract supplied by contractor - dates supplied and installed by contractor.</p> <p>Contract supplied by contractor - dates supplied and installed by contractor.</p>			
1	1	1	1
2	2	2	2
3	3	3	3
4	4	4	4
5	5	5	5
6	6	6	6
7	7	7	7
8	8	8	8
9	9	9	9
10	10	10	10
11	11	11	11
12	12	12	12
13	13	13	13
14	14	14	14
15	15	15	15
16	16	16	16
17	17	17	17
18	18	18	18
19	19	19	19
20	20	20	20
21	21	21	21
22	22	22	22
23	23	23	23
24	24	24	24
25	25	25	25
26	26	26	26
27	27	27	27
28	28	28	28
29	29	29	29
30	30	30	30
31	31	31	31
32	32	32	32
33	33	33	33
34	34	34	34
35	35	35	35
36	36	36	36
37	37	37	37
38	38	38	38
39	39	39	39
40	40	40	40
41	41	41	41
42	42	42	42
43	43	43	43
44	44	44	44
45	45	45	45
46	46	46	46
47	47	47	47
48	48	48	48
49	49	49	49
50	50	50	50
51	51	51	51
52	52	52	52
53	53	53	53
54	54	54	54
55	55	55	55
56	56	56	56
57	57	57	57
58	58	58	58
59	59	59	59
60	60	60	60
61	61	61	61
62	62	62	62
63	63	63	63
64	64	64	64
65	65	65	65
66	66	66	66
67	67	67	67
68	68	68	68
69	69	69	69
70	70	70	70
71	71	71	71
72	72	72	72
73	73	73	73
74	74	74	74
75	75	75	75
76	76	76	76
77	77	77	77
78	78	78	78
79	79	79	79
80	80	80	80
81	81	81	81
82	82	82	82
83	83	83	83
84	84	84	84
85	85	85	85
86	86	86	86
87	87	87	87
88	88	88	88
89	89	89	89
90	90	90	90
91	91	91	91
92	92	92	92
93	93	93	93
94	94	94	94
95	95	95	95
96	96	96	96
97	97	97	97
98	98	98	98
99	99	99	99
100	100	100	1

[illegible]

Drawing Title	Project Title	Date
Construction Plans	Remonte Radiation Room #4	2/13/2012
Approved: Division Chief	Building Number 28	Project No. 504-12-005
	Checked DWR	
Approved: Service Director	Room DWR/AJW	Revised No. 1
Location AMARILLO, TEXAS	Dwg. 1 of 1	