

NOTES:

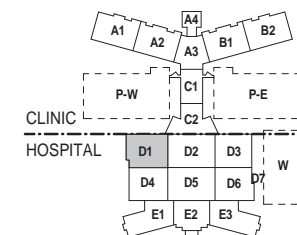
SHEET NOTES:

- SEE SHEET G-011 FOR GENERAL ABBREVIATIONS AND ARCHITECTURAL SYMBOLS.
- REFER TO SHEETS H-LS SERIES FOR LIFE SAFETY PLANS
- ALL INTERIOR PARTITIONS ARE TYPE 27 U.O.N. SEE SHEET H-AE5.600 SERIES FOR PARTITION TYPES
- REFER TO EQUIPMENT PLAN SHEETS H-QH.000 SERIES FOR ADDITIONAL DIMENSIONS AND INFORMATION.
- REFER TO SHEET H-QH.101 FOR NON-MEDICAL EQUIPMENT LIST. REFER TO H-QH.102 FOR TYPICAL MOUNTING HEIGHTS AND TOILET INFORMATION.
- REFER TO SHEET H-AE5.000 SERIES FOR DOOR, FRAME AND BORROWED LITE SCHEDULES AND DETAILS
- DIMENSIONS ARE TO COLUMN GRID, FACE OF MASONRY OR CONCRETE OR FACE OF METAL STUD U.O.N. DIMENSIONS NOTED AS "CLEAR" ARE FINISH FACE TO FINISH FACE INCLUDING ALL FINISHES SUCH AS TILE, WALL PANELS, ETC.
- SEE H-AE5.4 SERIES FOR WINDOW AND LOUVER TYPES.
- REFER TO PLUMBING PANS, H-MPI SERIES, FOR FLOOR DRAIN LOCATIONS
- REFER TO SHEET H-AE5.210 FOR TYPICAL EXPANSION JOINT DETAILS.
- REFER TO SHEET H-AE5.201 THRU H-AE5.302 FOR TYPICAL PLAN DETAILS.
- SEE SHEETS H-AE4.301 FOR ENLARGED PLANS - TYPICAL ROOMS
- REFER TO SHEET H-AE1.2FA FOR ROOF NOTES. [RQ]

KEY NOTE LEGEND

1

- INTERIOR FLOOR DRAIN, TYPICAL. SEE PLUMBING DRAWINGS
- MODULAR CASEWORK SHOWN FOR REFERENCE ONLY. REFER TO H-QH.4 SERIES FOR MANUFACTURER INFORMATION



KEY PLAN
AREA D, ZONE 1

BUILDING IS FULLY SPRINKLERED

No.	Description	Date
2	CPR 096	06/09/2011
3	CPR 068	07/08/2011
4	CPR 139	09/08/2011
5	CPR 151	09/23/2011
6	CPR 176	11/16/2011
7	CPR 180	11/17/2011
8	CPR 293	06/08/2012
9	CPR 383	04/16/2013

CONSULTANTS:

Professional Seals:



ARCHITECT/ENGINEERS:

RLF ELLERBE BECKET
A JOINT VENTURE
148 Lincoln Avenue
Wahler Park, Florida 32789
407 647 1039
1001 G Street, Suite 1000
Washington, D.C. 20001
202 654 9309

Drawing Title:
**HOSPITAL / CLINIC
LEVEL 2, AREA D, ZONE 1
CONSTRUCTION PLAN**

Approved Project Director:
Melan Arakic

Project Title:
**A NEW HOSPITAL FOR
VAMC ORLANDO, FLORIDA**

Location:
Orlando, Florida

Date:
04 JUNE, 2010

Checked:
Checker

Project Number:
675-950

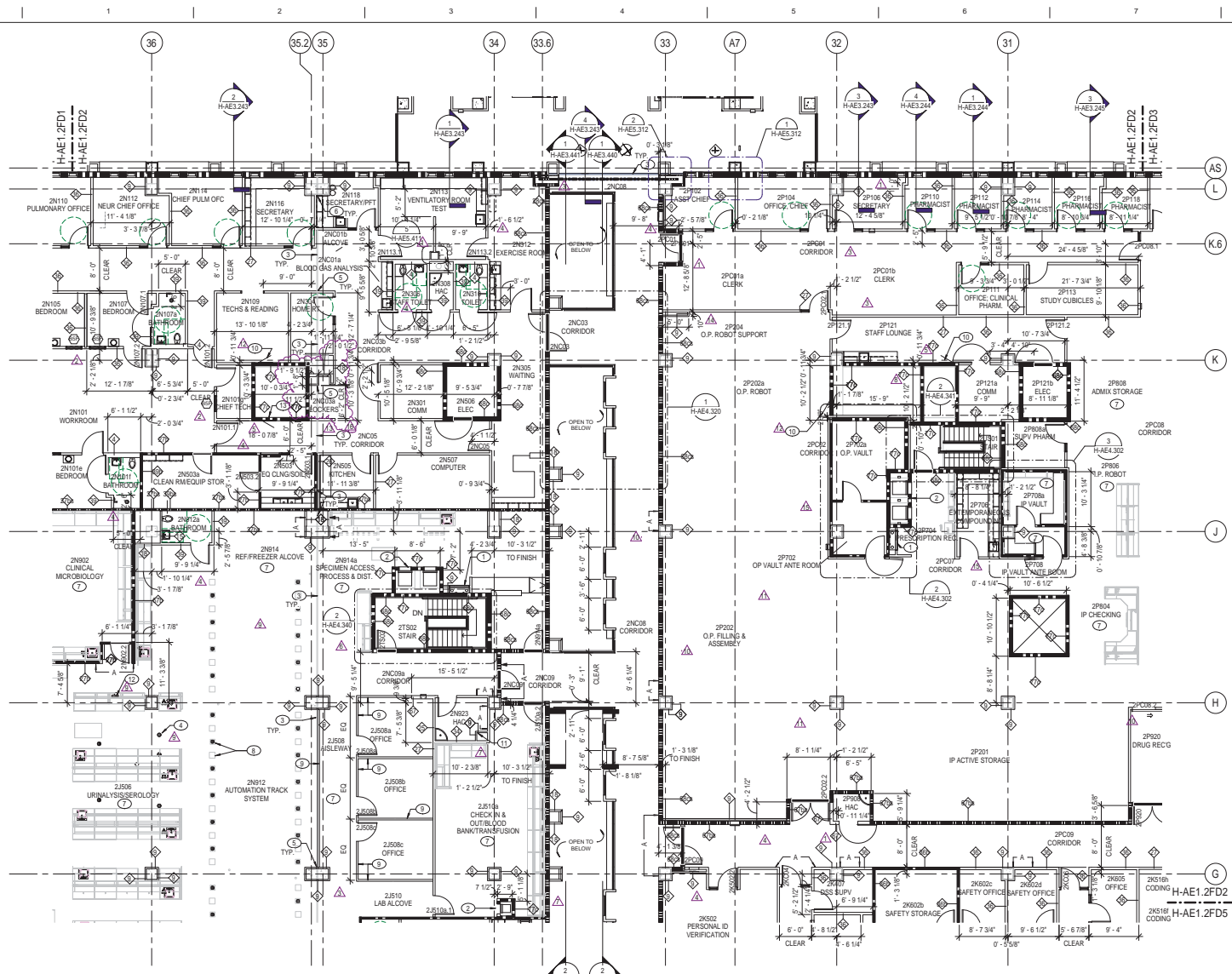
Bidding Number:
01 AND 02

Drawing Number:
H-AE1.2FD1

Date:
04 JUNE, 2010

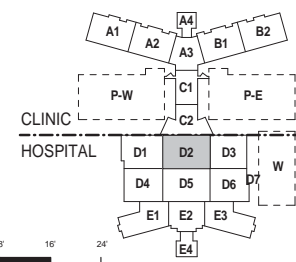
OFFICE OF
FACILITIES
MANAGEMENT

Department of
Veterans Affairs



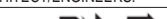
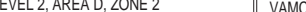
- NOTES:**
SHEET NOTES:
- SEE SHEET G-011 FOR GENERAL ABBREVIATIONS AND ARCHITECTURAL SYMBOLS.
 - REFER TO SHEETS H-L SERIES FOR LIFE SAFETY PLANS.
 - ALL INTERIOR PARTITIONS ARE TYPE 27 U.O.N. SEE SHEET H-AE5.000 SERIES FOR PARTITION TYPES.
 - REFER TO EQUIPMENT PLAN SHEETS H-QH.000 SERIES FOR ADDITIONAL DIMENSIONS AND INFORMATION.
 - REFER TO SHEET H-QH.101 FOR NON-MEDICAL EQUIPMENT LIST. REFER TO H-QH.102 FOR TYPICAL MOUNTING HEIGHTS AND TOILET INFORMATION.
 - REFER TO SHEET H-AE6.000 SERIES FOR DOOR, FRAME AND BORROWED LITE SCHEDULES AND DETAILS.
 - DIMENSIONS ARE TO COLUMN GRID, FACE OF MASONRY OR CONCRETE OR FACE OF METAL STUD U.O.N. DIMENSIONS NOTED AS "CLEAR" ARE FINISH FACE TO FINISH FACE INCLUDING ALL FINISHES SUCH AS TILE, WALL PANELS, ETC.
 - SEE H-AE6.4 SERIES FOR WINDOW AND LOUVER TYPES.
 - REFER TO PLUMBING PANS, H-MP1 SERIES, FOR FLOOR DRAIN LOCATIONS.
 - REFER TO SHEET H-AE5.210 FOR TYPICAL EXPANSION JOINT DETAILS.
 - REFER TO SHEET H-AE5.201 THRU H-AE5.302 FOR TYPICAL PLAN DETAILS.
 - SEE SHEETS H-AE4.301 FOR ENLARGED PLANS - TYPICAL ROOMS.
 - REFER TO 1/16" AREA PLANS FOR INTERSTITIAL SPACE PLANS AND LEVEL 6 OVERALL ROOF PLANS.

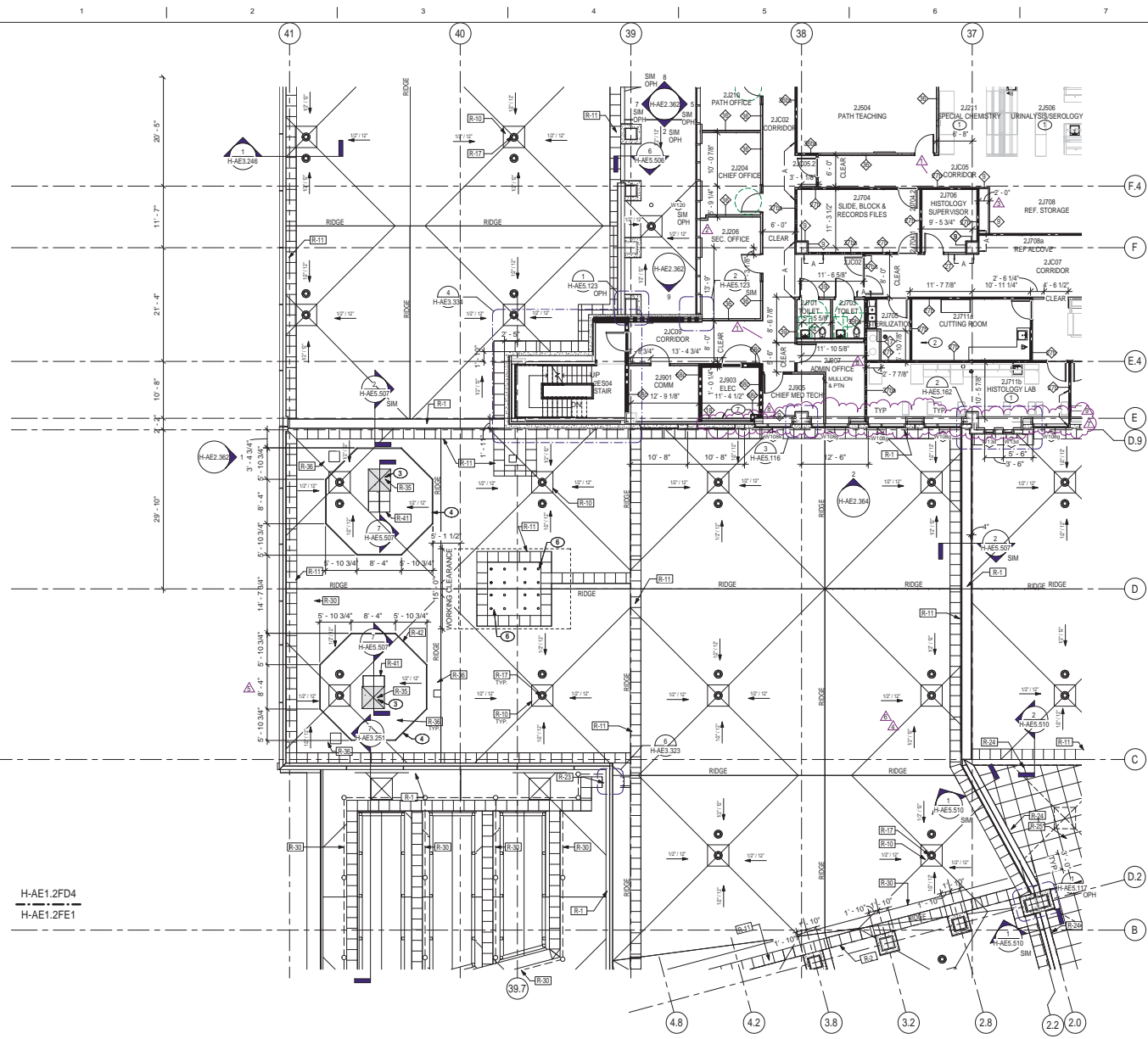
- KEY NOTE LEGEND**
- 1 PNEUMATIC TUBE STATION. SEE VERTICAL CIRCULATION SERIES DRAWINGS.
 - 2 DUMBWATER. SEE VERTICAL CIRCULATION SERIES DRAWINGS.
 - 3 EXPANSION JOINT FLOOR COVER ASSEMBLY. TYP. SIM. DETAIL 2H-AE5.210
 - 4 INTERIOR FLOOR DRAIN, TYPICAL. SEE PLUMBING DRAWINGS.
 - 5 EXPANSION JOINT WALL TO WALL COVER ASSEMBLY. TYP. AT UNRATED PARTITIONS, SIM. DETAIL 6H-AE5.210
 - 6 EXPANSION JOINT WALL COVER ASSEMBLY. TYP. SIM. DETAIL 6H-AE5.210
 - 7 MODULAR CASEWORK SHOWN FOR REFERENCE ONLY. REFER TO H-QH.4 SERIES FOR MANUFACTURER INFORMATION.
 - 8 ALTERNATING, IN-FLOOR PLUMBING AND ELECTRICAL BOSES, TYPICAL. SEE PLUMBING & ELECTRICAL DRAWINGS.
 - 9 DEMOUNTABLE PARTITION, SEE SPEC SECTION 102218
 - 10 ACCESS PANEL 2 HOUR RATED 30" X 30" 4" A.F.F. INSTALL FURRING 3" FROM PNEUMATIC TUBE RISERS
 - 11 UTILITY CHASE WITHIN MODULAR FURNITURE
 - 13 ACCESS PANEL 2 HOUR RATED 36" X 30" 4" A.F.F. PROVIDES ACCESS TO TWO DAMPERS



KEY PLAN
 AREA D, ZONE 2

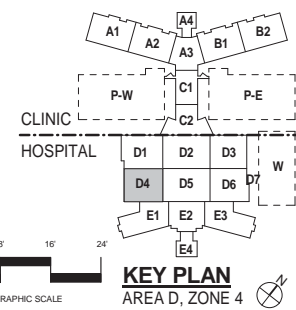
BUILDING IS FULLY SPRINKLERED

<table><tr><th>No.</th><th>Description</th><th>Date</th></tr><tr><td>9</td><td>CPR 220</td><td>02/06/2012</td></tr><tr><td>10</td><td>CPR 228 (VOIDED)</td><td>02/13/2012</td></tr><tr><td>11</td><td>CPR 228 (REISSUED)</td><td>03/13/2012</td></tr><tr><td>12</td><td>CPR 242</td><td>03/14/2012</td></tr><tr><td>13</td><td>CPR 264</td><td>04/04/2012</td></tr><tr><td>14</td><td>CPR 340</td><td>09/27/2012</td></tr><tr><td>15</td><td>CPR 370</td><td>01/11/2013</td></tr><tr><td>16</td><td>CPR 374</td><td>01/31/2013</td></tr></table>			No.	Description	Date	9	CPR 220	02/06/2012	10	CPR 228 (VOIDED)	02/13/2012	11	CPR 228 (REISSUED)	03/13/2012	12	CPR 242	03/14/2012	13	CPR 264	04/04/2012	14	CPR 340	09/27/2012	15	CPR 370	01/11/2013	16	CPR 374	01/31/2013	CONSULTANTS:	Professional Seals:	ARCHITECT/ENGINEERS:	Drawing Title	Project Title	Project Number	OFFICE OF FACILITIES MANAGEMENT
No.	Description	Date																																		
9	CPR 220	02/06/2012																																		
10	CPR 228 (VOIDED)	02/13/2012																																		
11	CPR 228 (REISSUED)	03/13/2012																																		
12	CPR 242	03/14/2012																																		
13	CPR 264	04/04/2012																																		
14	CPR 340	09/27/2012																																		
15	CPR 370	01/11/2013																																		
16	CPR 374	01/31/2013																																		
			<div><div>RLF</div><div>ELLERBE BECKET</div><div>A JOINT VENTURE</div><div>145 Lincoln Avenue Winter Park, Florida 32789 407 647 1039</div><div>1001 G Street, Suite 1000 Washington, D.C. 20001 202 654 9309</div></div>	HOSPITAL / CLINIC LEVEL 2, AREA D, ZONE 2 CONSTRUCTION PLAN	A NEW HOSPITAL FOR VAMC ORLANDO, FLORIDA	675-950	Bidding Number 01 AND 02																													
				Approved Project Director	Location			H-AE1.2FD2																												
					Orlando, Florida																															
					Date	04 JUNE, 2010	Checked	Drawn	Department of Veterans Affairs																											
							Checker	EB / RLF																												





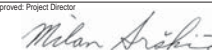

- NOTES:**
SHEET NOTES:
- SEE SHEET G-011 FOR GENERAL ABBREVIATIONS AND ARCHITECTURAL SYMBOLS.
 - REFER TO SHEETS H-A-S SERIES FOR LIFE SAFETY PLANS.
 - ALL INTERIOR PARTITIONS ARE TYPE 27 U.O.N. SEE SHEET H-AES.600 SERIES FOR PARTITION TYPES.
 - REFER TO EQUIPMENT PLAN SHEETS H-QH.000 SERIES FOR ADDITIONAL DIMENSIONS AND INFORMATION.
 - REFER TO SHEET H-QH.101 FOR NON-MEDICAL EQUIPMENT LIST. REFER TO H-QH.102 FOR TYPICAL MOUNTING HEIGHTS AND TOILET INFORMATION.
 - REFER TO SHEET H-AES.000 SERIES FOR DOOR, FRAME AND BORROWED LIFE SCHEDULES AND DETAILS.
 - DIMENSIONS ARE TO COLUMN GRID, FACE OF MASONRY OR CONCRETE OR FACE OF METAL STUD U.O.N. DIMENSIONS NOTED AS "CLEAR" ARE FINISH FACE TO FINISH FACE INCLUDING ALL FINISHES SUCH AS TILE, WALL PANELS, ETC.
 - SEE H-AES.4 SERIES FOR WINDOW AND LOUVER TYPES.
 - REFER TO PLUMBING PANS, H-MP1 SERIES, FOR FLOOR DRAIN LOCATIONS.
 - REFER TO SHEET H-AES.210 FOR TYPICAL EXPANSION JOINT DETAILS.
 - REFER TO SHEET H-AES.201 THRU H-AES.302 FOR TYPICAL PLAN DETAILS.
 - SEE SHEETS H-AE.4.301 FOR ENLARGED PLANS - TYPICAL ROOMS.
 - REFER TO SHEET H-AE1.2FA4 FOR ROOF NOTES. (R-0)

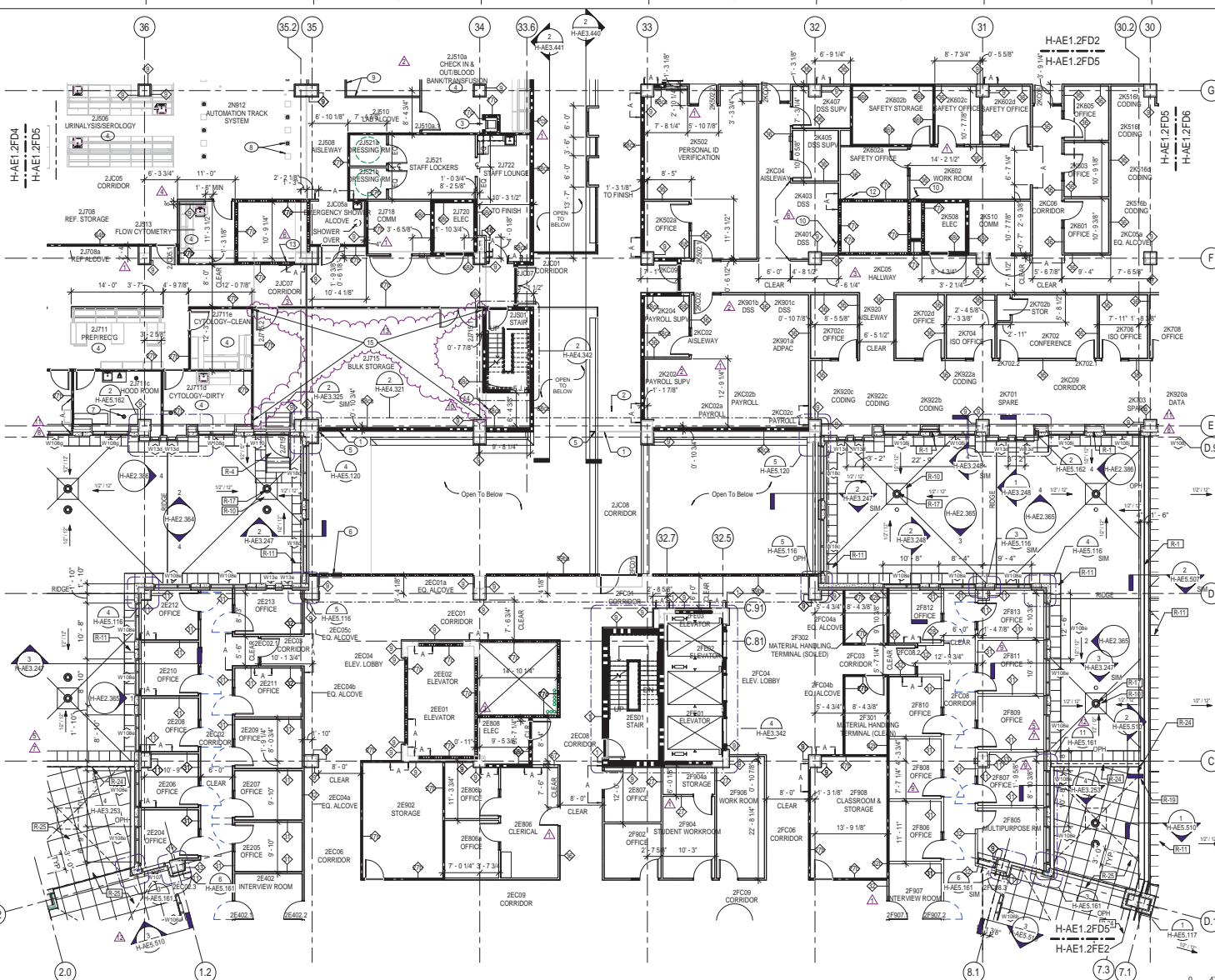
- KEY NOTE LEGEND**
- MODULAR CASEWORK SHOWN FOR REFERENCE ONLY. REFER TO H-QH.1 SERIES FOR MANUFACTURER INFORMATION.
 - FLOOR DRAINS, TYPICAL. SEE PLUMBING.
 - CRYOGENIC GAS VENT.
 - EQUIPMENT GUARD RAIL.
 - NOT USED.
 - CHILLER. SEE MECHANICAL DOCUMENTS. SEE STRUCTURAL DOCUMENTS FOR SUPPORT FRAME. FLASH ALL LEGS OF SUPPORT FRAME PER DETAIL SH-AES.510 (SIMILAR).
 - ALIGN FINISH FACE OF PARTITION WITH FACE OF CONC. CURB.



KEY PLAN
 AREA D, ZONE 4

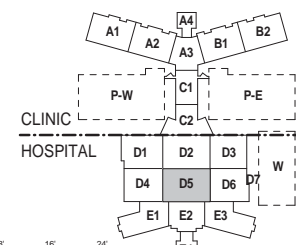
BUILDING IS FULLY SPRINKLERED

<table><tr><th>A No.</th><th>Description</th><th>Date</th></tr><tr><td>2</td><td>CPR 180</td><td>11/17/2011</td></tr><tr><td>3</td><td>CPR 220</td><td>02/06/2012</td></tr><tr><td>4</td><td>CPR 258</td><td>03/08/2012</td></tr><tr><td>5</td><td>CPR 236</td><td>03/09/2012</td></tr><tr><td>6</td><td>CPR 293</td><td>06/08/2012</td></tr><tr><td>7</td><td>CPR 342 - VOIDED</td><td>07/11/2012</td></tr><tr><td>8</td><td>CPR 320</td><td>08/09/2012</td></tr><tr><td>9</td><td>CPR 302R1</td><td>09/24/2012</td></tr></table>			A No.	Description	Date	2	CPR 180	11/17/2011	3	CPR 220	02/06/2012	4	CPR 258	03/08/2012	5	CPR 236	03/09/2012	6	CPR 293	06/08/2012	7	CPR 342 - VOIDED	07/11/2012	8	CPR 320	08/09/2012	9	CPR 302R1	09/24/2012	CONSULTANTS:		Professional Seals:		ARCHITECT/ENGINEERS:		Drawing Title		Project Title		Project Number		OFFICE OF FACILITIES MANAGEMENT	
A No.	Description	Date																																									
2	CPR 180	11/17/2011																																									
3	CPR 220	02/06/2012																																									
4	CPR 258	03/08/2012																																									
5	CPR 236	03/09/2012																																									
6	CPR 293	06/08/2012																																									
7	CPR 342 - VOIDED	07/11/2012																																									
8	CPR 320	08/09/2012																																									
9	CPR 302R1	09/24/2012																																									
							 145 Lincoln Avenue Wylder Park, Florida 32789 407 647 1039		HOSPITAL / CLINIC LEVEL 2, AREA D, ZONE 4 CONSTRUCTION PLAN		A NEW HOSPITAL FOR VAMC ORLANDO, FLORIDA		675-950		OFFICE OF FACILITIES MANAGEMENT																												
									Approved: Project Director 		Location Orlando, Florida		Building Number 01 AND 02																														
											Drawing Number H-AE1.2FD4		Checked Checker		Drawn EB / RLF																												
											Date 04 JUNE, 2010		Dep. 0800 of 4322		 Department of Veterans Affairs																												



- NOTES:**
- SHEET NOTES:**
- SEE SHEET G-011 FOR GENERAL ABBREVIATIONS AND ARCHITECTURAL SYMBOLS.
 - REFER TO SHEETS H-L SERIES FOR LIFE SAFETY PLANS.
 - ALL INTERIOR PARTITIONS ARE TYPE 27 U.O.N. SEE SHEET H-AE5.000 SERIES FOR PARTITION TYPES.
 - REFER TO EQUIPMENT PLAN SHEETS H-Q4.000 SERIES FOR ADDITIONAL DIMENSIONS AND INFORMATION.
 - REFER TO SHEET H-Q4.101 FOR NON-MEDICAL EQUIPMENT LIST. REFER TO H-Q4.102 FOR TYPICAL MOUNTING HEIGHTS AND TOILET INFORMATION.
 - REFER TO SHEET H-AE5.000 SERIES FOR DOOR, FRAME AND BORROWED LITE SCHEDULES AND DETAILS.
 - DIMENSIONS ARE TO COLUMN GRID. FACE OF MASONRY OR CONCRETE OR FACE OF METAL STUD U.O.N. DIMENSIONS NOTED AS "CLEAR" ARE FINISH FACE TO FINISH FACE INCLUDING ALL FINISHES SUCH AS TILE, WALL PANELS, ETC.
 - SEE H-AE5.4 SERIES FOR WINDOW AND LOUVER TYPES.
 - REFER TO PLUMBING PANS, H-MP1 SERIES, FOR FLOOR DRAIN LOCATIONS.
 - REFER TO SHEET H-AE5.210 FOR TYPICAL EXPANSION JOINT DETAILS.
 - REFER TO SHEET H-AE5.201 THRU H-AE5.302 FOR TYPICAL PLAN DETAILS.
 - SEE SHEETS H-AE4.301 FOR ENLARGED PLANS - TYPICAL ROOMS.
 - REFER TO SHEET H-AE1.2F4 FOR ROOF NOTES. [R-3]

- KEY NOTE LEGEND:**
- EXPANSION JOINT FLOOR COVER ASSEMBLY. TYP. SIM. DETAIL 2H-AE5.210.
 - EXPANSION JOINT WALL TO WALL COVER ASSEMBLY. TYP. AT RATED PARTITION. SIM. DETAIL 7H-AE5.210.
 - DUMBWATER. SEE VERTICAL CIRCULATION SERIES DRAWINGS.
 - MODULAR CASEWORK SHOWN FOR REFERENCE ONLY. REFER TO H-Q4 SERIES FOR MANUFACTURER INFORMATION.
 - EXPANSION JOINT WALL TO WALL COVER ASSEMBLY. TYP. AT UNRATED PARTITIONS. SIM. DETAIL 8H-AE5.210.
 - 5/8" 1 HOUR FIRE SMOKE. ACCESS PANEL - 26113.A02.
 - INTERIOR FLOOR DRAIN. TYPICAL. SEE PLUMBING DRAWINGS.
 - ALTERNATING IN-FLOOR PLUMBING AND ELECTRICAL BOXES. TYPICAL. SEE PLUMBING & ELECTRICAL DRAWINGS.
 - DEMOUNTABLE PARTITION. SEE SPEC SECTION 102219.
 - ACCESS PANEL 2 HOUR RATED 24" X 36" 4" A.F.F.
 - NOT USED.
 - ACCESS PANEL 2 HOUR RATED 24" X 36" 4" A.F.F.
 - ACCESS PANEL 2 HOUR RATED 30" X 30" 4" A.F.F.
 - ADD 2 1/2" STUDS TO CAVITY TO ACCOMMODATE MISPLACEMENT OF INTERSTITIAL DECK EDGE. SEE DETAIL 2H-AE5.210.
 - CONCRETE INFILL. SEE STRUCTURAL DRAWINGS FOR LOCATION AND DEPTH. a) ROUGHEN THE EXISTING SLAB b) PROVIDE COWEL BARS FOR TOPPING SLAB. BARS SHALL BE 3/8" LONG #4 BARS @ 24" ON CENTER EACH WAY. WITH A 2" EMBEDDED DEPTH. EPOXY INTO EXISTING SLAB. c) PROVIDE BONDING AGENT PER SPECIFICATIONS. d) PLACE 6 X 6 X W2.0 W/W APPROXIMATELY 1" 1/2" BELOW CONCRETE OR USE FIBER-MESH CONCRETE PER MFR. RECOMMENDATIONS. e) PLACE 2500 PSI NORMAL WEIGHT CONCRETE.



KEY PLAN
AREA D, ZONE 5

BUILDING IS FULLY SPRINKLERED

<table><tr><th>A No.</th><th>Description</th><th>Date</th></tr><tr><td>6</td><td>CPR 242</td><td>03/14/2012</td></tr><tr><td>7</td><td>CPR 253</td><td>06/08/2012</td></tr><tr><td>8</td><td>CPR 302 - VOIDED</td><td>07/11/2012</td></tr><tr><td>9</td><td>CPR 329</td><td>08/30/2012</td></tr><tr><td>10</td><td>CPR 335</td><td>09/13/2012</td></tr><tr><td>11</td><td>CPR 302R1</td><td>09/24/2012</td></tr><tr><td>12</td><td>CPR 341</td><td>10/04/2012</td></tr><tr><td>13</td><td>CPR 346</td><td>10/18/2012</td></tr></table>			A No.	Description	Date	6	CPR 242	03/14/2012	7	CPR 253	06/08/2012	8	CPR 302 - VOIDED	07/11/2012	9	CPR 329	08/30/2012	10	CPR 335	09/13/2012	11	CPR 302R1	09/24/2012	12	CPR 341	10/04/2012	13	CPR 346	10/18/2012	CONSULTANTS:		Professional Seals:		ARCHITECT/ENGINEERS:		Drawing Title		Project Title		Project Number		OFFICE OF FACILITIES MANAGEMENT	
A No.	Description	Date																																									
6	CPR 242	03/14/2012																																									
7	CPR 253	06/08/2012																																									
8	CPR 302 - VOIDED	07/11/2012																																									
9	CPR 329	08/30/2012																																									
10	CPR 335	09/13/2012																																									
11	CPR 302R1	09/24/2012																																									
12	CPR 341	10/04/2012																																									
13	CPR 346	10/18/2012																																									
							 145 Lincoln Avenue Winter Park, Florida 32789 407 647 1039		HOSPITAL / CLINIC LEVEL 2, AREA D, ZONE 5 BID ALTERNATE NO. 7		A NEW HOSPITAL FOR VAMC ORLANDO, FLORIDA		673-950		Department of Veterans Affairs																												
							Approved: Project Director 		Location Orlando, Florida		Building Number 01 AND 02																																
									Drawing Number H-AE1.2FD5-A		Date 04 JUNE, 2010		Checked Checker				Drawn EB / RLF		Reg. 0692 of 4322																								