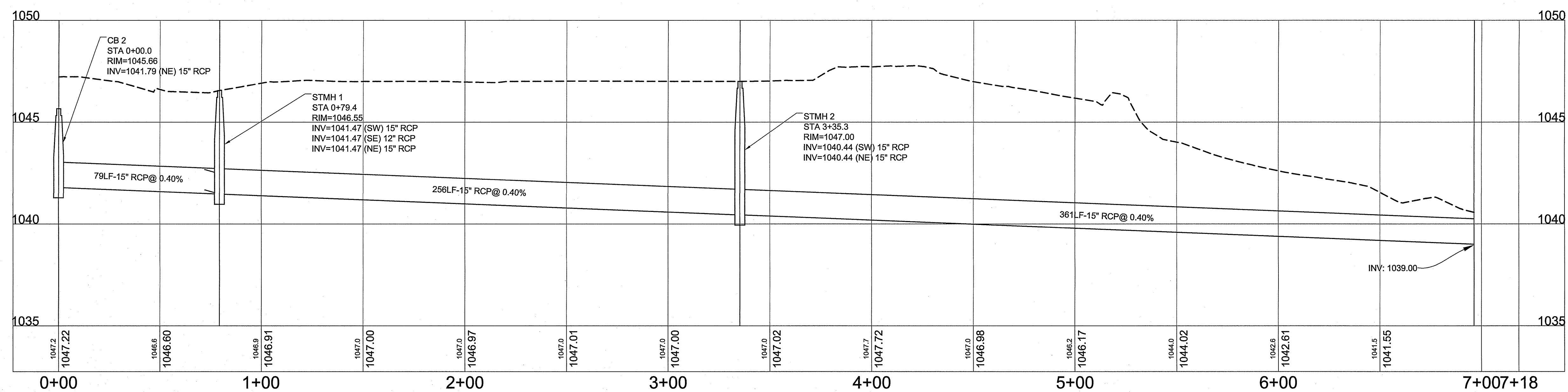
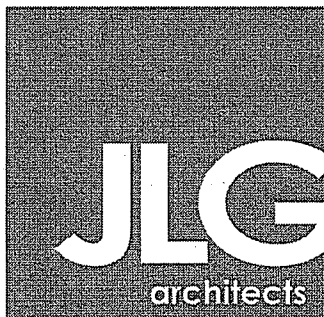

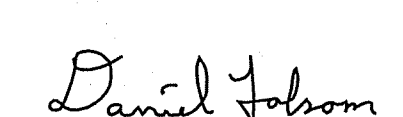


STORMWATER UTILITY PLAN VIEW



STORMWATER UTILITY PROFILE VIEW

- NOTES**
1. CONTRACTOR SHALL FIELD VERIFY LOCATION AND ELEVATION OF ALL EXISTING UNDERGROUND UTILITIES PRIOR TO CONSTRUCTION ACTIVITY.
 2. SAWCUT BITUMINOUS PAVEMENT AT PIPE CROSSINGS. REMOVE AND REPLACE BITUMINOUS PAVEMENT AND SUBGRADE.
 3. ALL OPEN TRENCHES SHALL BE BACKFILLED AT THE END OF EACH WORKING DAY. NO OPEN TRENCHES ALLOWED OVERNIGHT.
 4. ALL EXCESS SOILS SHALL BE REMOVED FROM SITE. COORDINATE WITH V.A. FOR LOCATION OF REMOVED SOILS.
 5. SALVAGE AND REPLACE EXISTING TOPSOIL. SCREEN PRIOR TO PLACEMENT AND FERTILIZE UPON STABILIZATION.

CONSULTANTS: 		ARCHITECT/ENGINEERS:  Alexandria 525 Broadway Street Alexandria, MN 56308 phone 320.759.9030 facsimile 320.759.9062 www.jlgarchitects.com copyright © 2011		 2510 Broadway Street South Alexandria, MN 56308 (320) 762-1260 (Phone) (320) 762-8054 (Fax)		Drawing Title Stormwater Utility Plan Approved  Daniel J. Folsom License# 23897		Project Title Replace Parking Lost Due To Construction Location St. Cloud VA Health Care System Date April 4, 2012		Project Number 656-12-214 Building Number Drawing Number C40 Dwg. 5 of 9			
-------------------------	--	---	--	--	--	---	--	---	--	--	--	---	--