

2 POLE BASE DETAIL  
SCALE = 1/16"=1'-0"

LIGHT FIXTURE SCHEDULE						
TYPE	DESCRIPTION	MOUNTING	LAMP TYPE	LAMPS	LIGHT CONTROL	VOLTS
A	SQUARE 6" POLE 35-0"	POLE BASE			DARK BRONZE	
A1	POLE HEAD	POLE	HD	250W HPS	TYPE II DISTRIBUTION	277/480

Notes:  
1. PROVIDE MILLERBERND TRANSFORMER T-BASE #300A127-4572/435-BRZ & ALUMINUM BREAKAWAY BASE #AKRON-TB1-17-BRZ-H.

- PLAN NOTES**
1. PROVIDE 1" C-2#8-1#8 GROUND FOR NEW POLES. MAKE ALL REQUIRED CONNECTIONS TO NEW LIGHTING CONTROLS AND EXISTING ELECTRICAL PANEL. SITE VERIFY EXACT SCOPE OF WORK PRIOR TO BID. REFER TO DETAIL 4/E1.0.
  2. PROVIDE NEW POLE BASE, FIXTURE AND POLE WITH VIBRATION DAMPER INSIDE OF ALL POLES. FIXTURE SHALL BE AS FOLLOWS:
    - POLE: NAFCO 30" SQUARE 6" ALUMINUM POLE NAFCO #6S30E-DARK BRONZE WITH HAND HOLE AND GROUNDING LUG
    - POLE ATTACHMENTS: MILLERBERND TRANSFORMER T-BASE #300A127-4572/435-BRZ & ALUMINUM BREAKAWAY BASE #AKRON-TB1-17-BRZ-H. SEE DETAIL 3/E1.0.
    - HEAD: STERNER LIGHTING #EXEC-RT25-250HPS-2H-480-C-10-N-FL-BZ. PROVIDE FUSES AT HEAD WITH QUITE DISCONNECT.
  3. PROVIDE BASE AND CONDUITS WITH ANCHOR BOLTS ONLY, FOR FUTURE LIGHT POLE AND FIXTURE. PROVIDE A WEATHER PROOF J-BOX ON TOP OF BASE FOR WIRING.
  4. PROVIDE TRANSFORMER: 208 VOLT, SINGLE PHASE PRIMARY, 240/480 VOLT SECONDARY. 7.5 KVA, NEMA 1, WALL MOUNT, 12 1/2" W x 15 1/4" H x 9" D, UL LISTED. POWERTRAN CORPORATION #EF583FST7.5K-CT OR EQUAL. CONTACT RAN NAK AT POWERTRAN 248-398-4300.
- GENERAL NOTES**
- A. ALL BRANCH CIRCUITS SHALL BE A MINIMUM OF #8 AWG CONDUCTORS. PROVIDE CONDUIT AS REQUIRED BY NEC. ALL CONDUIT SHALL BE SCHEDULE 80 PVC UNLESS OTHERWISE NOTED.
- B. ALL LIGHTING BRANCH CIRCUITS SHALL BE ROUTED THROUGH A RELAY CONTROL PANEL. TO BE CONTROLLED THE SAME AS EXISTING PARKING LOT FIXTURES.
- = LIGHT POLE, BASE AND FIXTURE.

**NAFCO International**  
17" Transformer Base 13"-15" Lower Bolt Circle

**CAUTION**  
Before installation, user should consult with authorized distributor regarding user's proposed application, load requirements and installation methods. Failure can result from user's misapplication or improper installation.

To approach optimum static loads, use the largest possible bolt circles and use steel washers as specified, below:

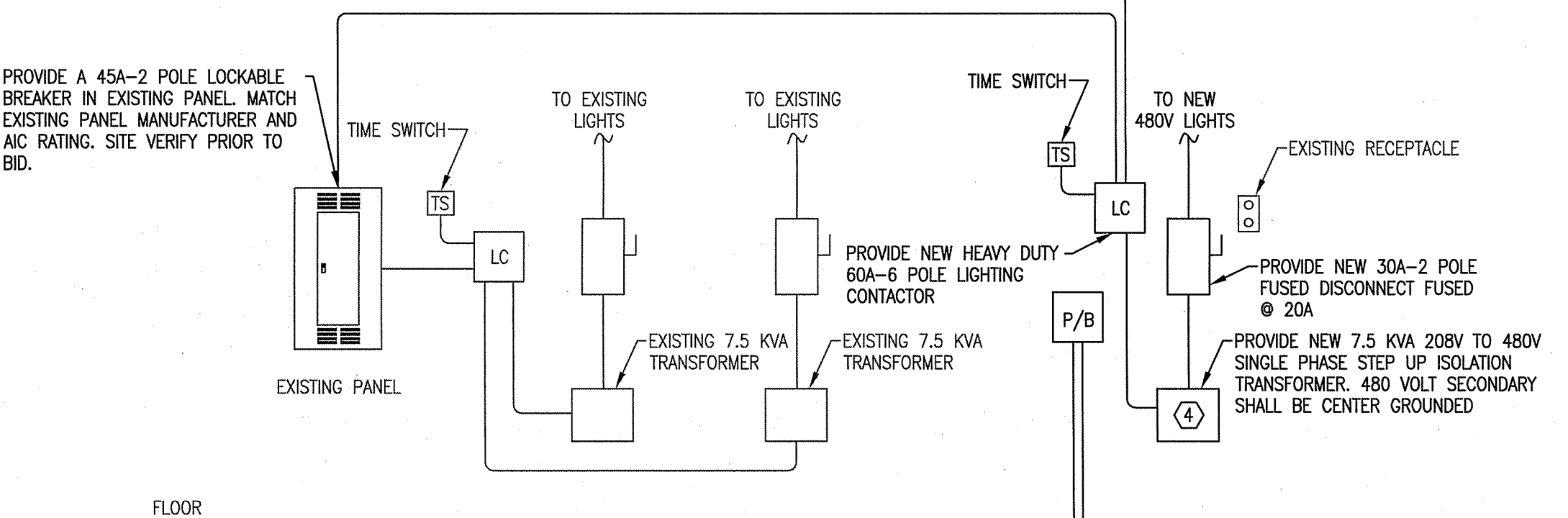
- **BOTTOM Bolt Circles (13" - 15" Diameter):**  
Use a 2-1/2" Dia. x 1/2" Thk. washer.
- **For All Mounting Under 13" Diameter:**  
See special mounting instructions below.
- **Top Bolt Circles (13"-15" - 13-1/2" Diameter):**  
Use a 2-1/2" Dia. x 3/8" Thk. washer or use a 2-3/4" Dia. x 1/2" Thk. washer.

**BREAKAWAY BASE**  
Approved by FIA AIA 1985  
ASHTO Requirements

**SPECIAL MOUNTING INSTRUCTIONS**  
(d) 5/8" x 2-3/4" x 4-1/4" rectangular washers along with (d) 5/16" Dia. x 3/8" Thk. washers on top.

**CAUTION**  
Both washers must be used as a set to approach optimum static load.

3 BREAKAWAY BASE DETAIL  
SCALE = NTS



4 BUILDING 94 WALL ELEVATION  
SCALE = NTS

100% CDs - FOR CONSTRUCTION

<b>CONSULTANTS:</b>		<b>ARCHITECT/ENGINEERS:</b>		<b>Drawing Title</b> ELECTRICAL SITE PLAN FOR NEW LIGHTING		<b>Project Title</b> Replace Parking Lost Due To Construction		<b>Project Number</b> 656-12-214	
				<b>Approved</b> David M. Schmidt DAVID M. SCHMIDT LICENSE #43748		<b>Location</b> St. Cloud VA Health Care System		<b>Building Number</b> -	
				DATE 04/04/12		<b>Date</b> April 4, 2012		<b>Checked</b> DMS	
						<b>Drawn</b> CAB		<b>Drawing Number</b> E1.0	
								<b>Dwg.</b> 9 of 9	

Alexandria  
525 Broadway Street  
Alexandria, MN 56308  
phone 320.759.9030  
facsimile 320.759.9062  
www.jlgarchitects.com  
copyright © 2011

Design Tree  
ENGINEERING AND SURVEYING  
2510 Broadway Street South  
Alexandria, MN 56308  
(202) 762-1260 (Phone)  
(202) 217-5557 (Office)  
(202) 762-4054 (Fax)

VAMC SAINT CLOUD MN

three inches = one foot  
one and one half inches = one foot  
one inch = one foot  
three quarters inch = one foot  
one half inch = one foot  
three eighths inch = one foot  
one quarter inch = one foot  
one eighth inch = one foot