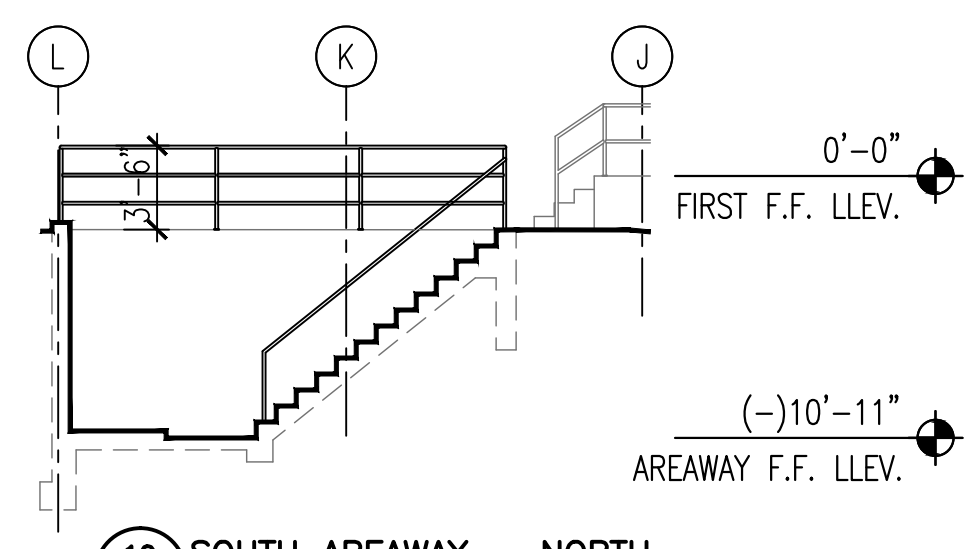
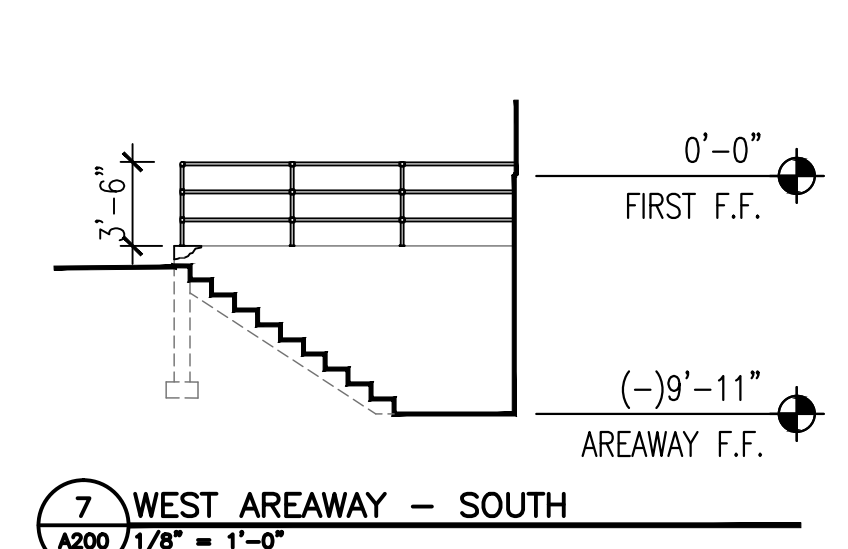


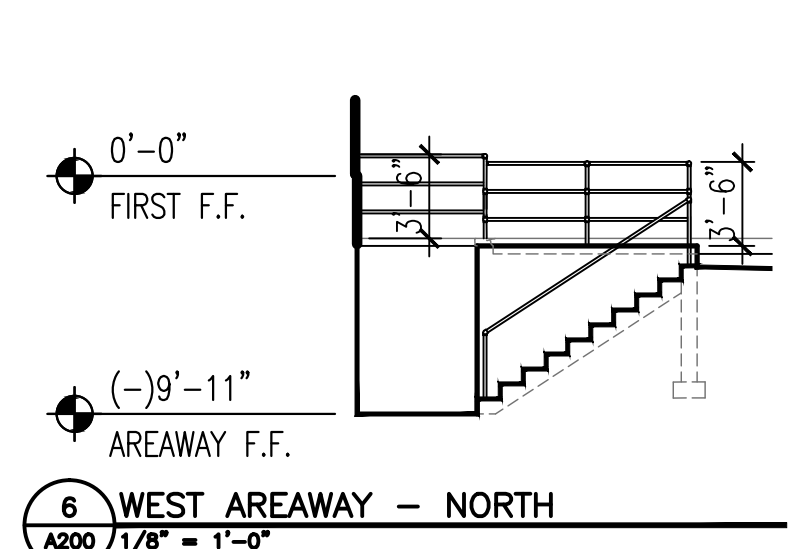
11 SOUTH AREAWAY - SOUTH
 A200 1/8" = 1'-0"
 NOTE:
 REPOINT 10% OF MASONRY EXCEPT WHERE NOTED OTHERWISE.



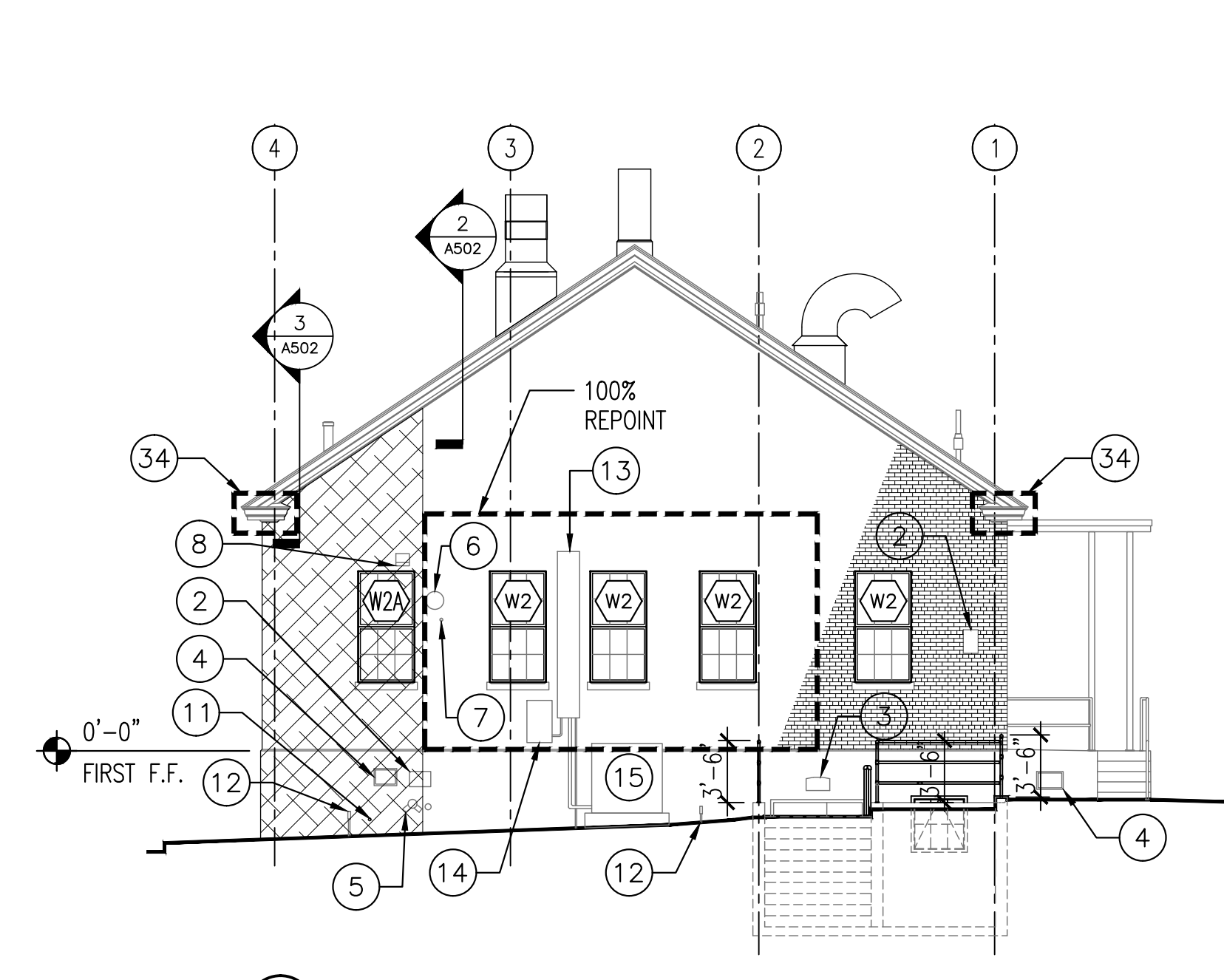
10 SOUTH AREAWAY - NORTH
 A200 1/8" = 1'-0"
 NOTE:
 REPOINT 10% OF MASONRY EXCEPT WHERE NOTED OTHERWISE.



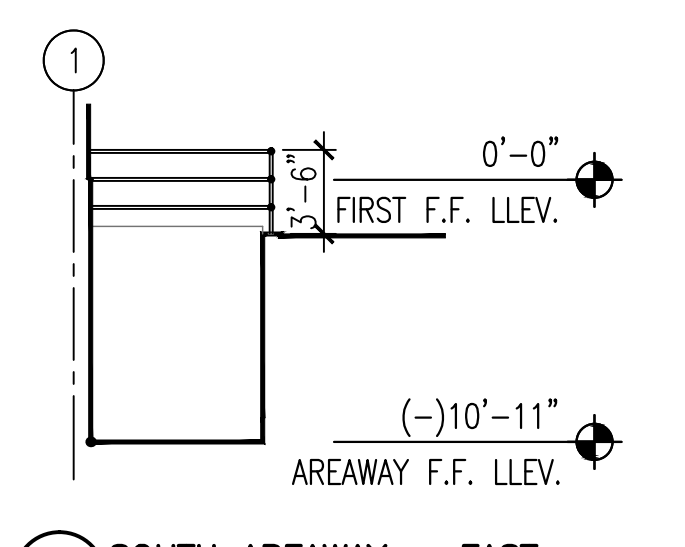
7 WEST AREAWAY - SOUTH
 A200 1/8" = 1'-0"
 NOTE:
 REPOINT 10% OF MASONRY EXCEPT WHERE NOTED OTHERWISE.



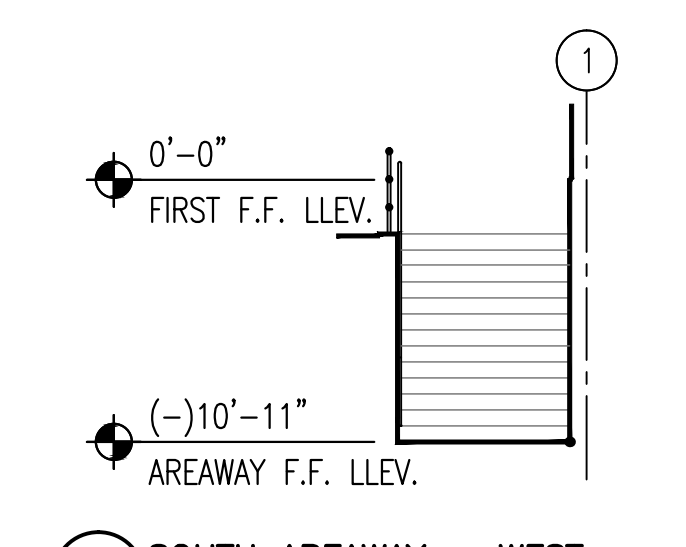
6 WEST AREAWAY - NORTH
 A200 1/8" = 1'-0"
 NOTE:
 REPOINT 10% OF MASONRY EXCEPT WHERE NOTED OTHERWISE.



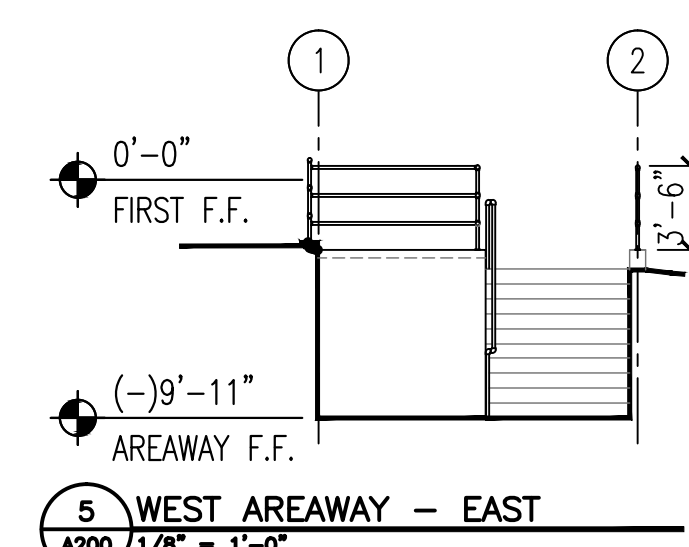
3 WEST ELEVATION
 A200 1/8" = 1'-0"
 NOTE:
 REPOINT 10% OF MASONRY EXCEPT WHERE NOTED OTHERWISE.



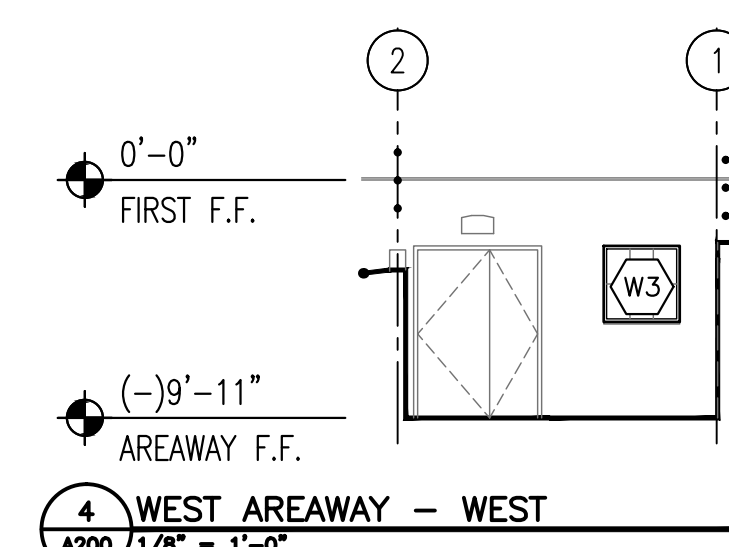
9 SOUTH AREAWAY - EAST
 A200 1/8" = 1'-0"
 NOTE:
 REPOINT 10% OF MASONRY EXCEPT WHERE NOTED OTHERWISE.



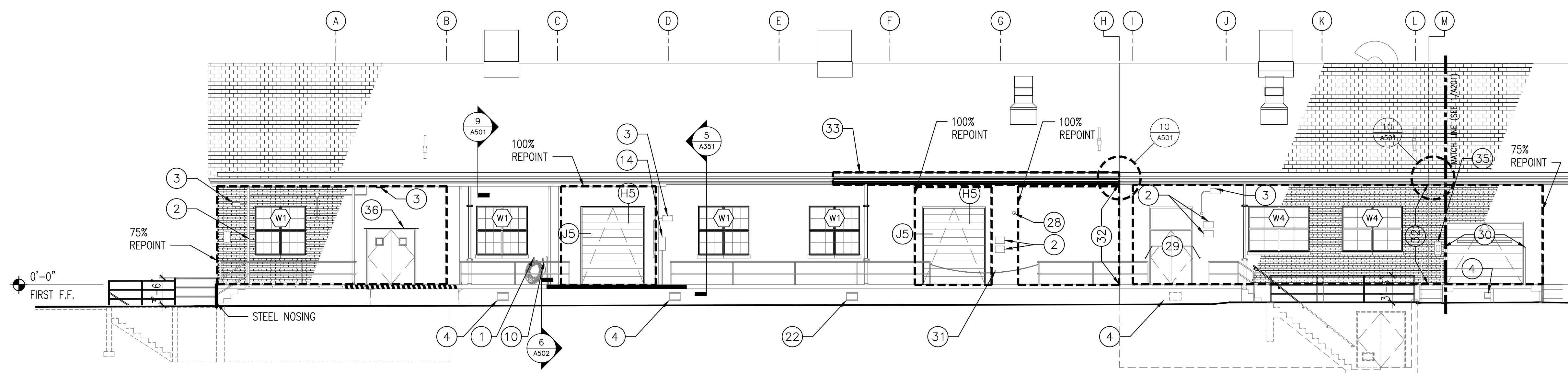
8 SOUTH AREAWAY - WEST
 A200 1/8" = 1'-0"
 NOTE:
 REPOINT 10% OF MASONRY EXCEPT WHERE NOTED OTHERWISE.



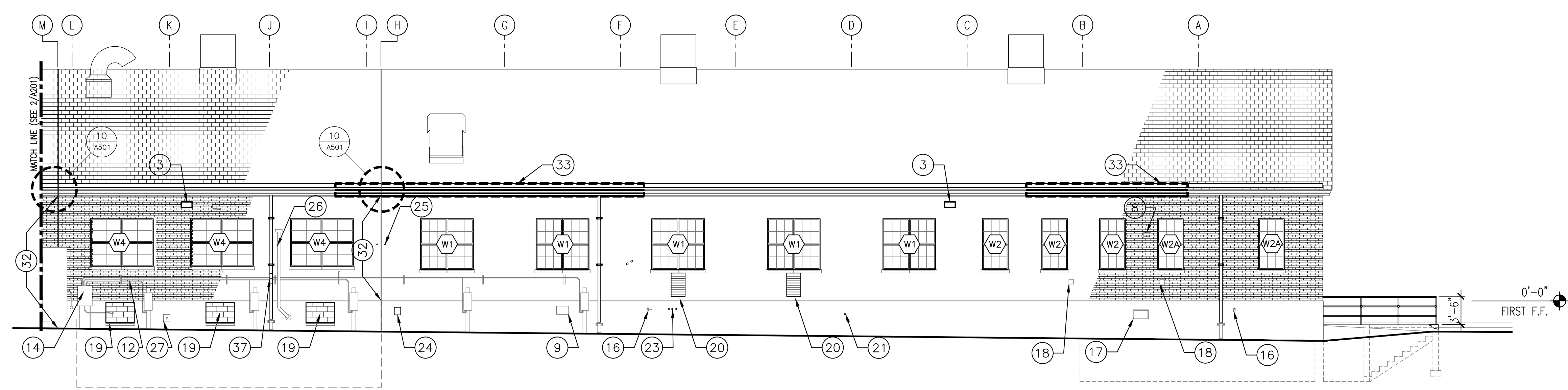
5 WEST AREAWAY - EAST
 A200 1/8" = 1'-0"
 NOTE:
 REPOINT 10% OF MASONRY EXCEPT WHERE NOTED OTHERWISE.



4 WEST AREAWAY - WEST
 A200 1/8" = 1'-0"
 NOTE:
 REPOINT 10% OF MASONRY EXCEPT WHERE NOTED OTHERWISE.



2 SOUTH ELEVATION
 A200 1/8" = 1'-0"
 NOTE:
 REPOINT 10% OF MASONRY EXCEPT WHERE NOTED OTHERWISE.



1 NORTH ELEVATION
 A200 1/8" = 1'-0"
 NOTE:
 REPOINT 10% OF MASONRY EXCEPT WHERE NOTED OTHERWISE.

GENERAL ELEVATION NOTES

- A. REPOINT DAMAGED AND OTHERWISE UNSOUND MORTAR AS REQUIRED AND AS INDICATED.
- B. INSTALL BREATHABLE, WATER-REPELLENT SEALANT TO ALL EXTERIOR MASONRY.
- C. PAINT EXTERIOR CONCRETE FOUNDATION WALL.
- D. SURFACE-MOUNTED ELECTRICAL PANELS SHALL REMAIN IN PLACE UNDISTURBED. CONTRACTOR SHALL PROTECT PANELS FROM DAMAGE DURING CONSTRUCTION OPERATIONS.
- E. BRACKET AND UNISTRUT-MOUNTED PIPING AND CONDUITS SHALL REMAIN IN PLACE UNDISTURBED. CONTRACTOR SHALL PROTECT THEM FROM DAMAGE DURING CONSTRUCTION OPERATIONS. LOOSE BRACKETS AND UNISTRUT SHALL BE RE-ANCHORED.

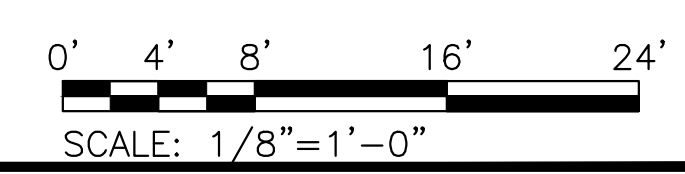
ELEVATION KEY NOTES

- 1 REINSTALL SALVAGED HOSE BRACKET WITH STAINLESS STEEL TAPCON SCREWS.
- 2 REINSTALL SALVAGED SIGN WITH STAINLESS STEEL TAPCON FASTENERS.
- 3 LIGHT FIXTURE. SEE ME DRAWINGS.
- 4 CLEAN, REPAIR, PRIME AND PAINT METAL VENT BLACK. INSTALL INSECT SCREEN ON INTERIOR SIDE OF VENT.
- 5 CLEAN AND REPAIR FIRE DEPARTMENT CONNECTION. REPAIR, PRIME, AND PAINT METAL TRIM.
- 6 CLEAN, PRIME, AND PAINT ALARM BELL.
- 7 CLEAN AND SEAL PERIMETER OF EXISTING PIPE.
- 8 RELOCATED EXHAUST FAN. SEE ME DRAWINGS. CLEAN, PRIME, AND PAINT TO MATCH BRICK. SEAL PERIMETER AT BRICK.
- 9 INFILL OPENING WITH CMU. INSET FACE OF MASONRY 1" FROM EXTERIOR FACE OF EXISTING WALL AND COORDINATE WITH REPLACEMENT OF HOSE BIB. SEE ME DRAWINGS.
- 10 HOSE BIB TO REMAIN. CONTRACTOR SHALL PROTECT FROM DAMAGE DURING CONSTRUCTION OPERATIONS.
- 11 PATCH WALL WHERE ABANDONED CONDUIT WAS REMOVED.
- 12 CLEAN AND PAINT EXISTING CONDUIT TO MATCH WALL.
- 13 CLEAN, PRIME, PAINT TO MATCH BRICK AND REINSTALL METAL PIPING SHROUD.
- 14 ELECTRICAL PANEL TO REMAIN. CONTRACTOR SHALL PROTECT FROM DAMAGE DURING CONSTRUCTION OPERATIONS.
- 15 PAD-MOUNTED CONDENSING UNIT TO REMAIN. CONTRACTOR SHALL PROTECT UNIT FROM DAMAGE DURING CONSTRUCTION OPERATIONS.
- 16 HOSE BIB TO BE REPLACED. SEE ME SERIES DRAWINGS.
- 17 INSTALL NEW 12" W X 8" H METAL FOUNDATION VENT. VENT TO BE FABRICATED TO MATCH ORIGINAL WITH INSECT SCREEN. PAINT BLACK.
- 18 INSTALL BRICK TO MATCH EXISTING AND TOOTH IN TO MATCH COURSING.
- 19 INFILL OPENING WITH CMU. INSET FACE OF MASONRY 1" FROM EXTERIOR FACE OF EXISTING WALL. COORDINATE WORK WITH EXISTING CONDUIT TO REMAIN WHERE APPLICABLE.
- 20 INFILL EXISTING WITH BRICK TO MATCH EXISTING.
- 21 PATCH HOLES IN WALL TO MATCH ADJACENT MATERIAL.
- 22 INSTALL NEW 18" W X 12" H METAL FOUNDATION VENT. VENT TO BE FABRICATED TO MATCH ORIGINAL WITH INSECT SCREEN. PAINT BLACK.
- 23 PATCH HOLES IN WALL TO MATCH ADJACENT MATERIAL.
- 24 INFILL VENT OPENING TO MATCH ADJACENT MATERIAL.
- 25 PATCH HOLES FROM BRACKET TO MATCH ADJACENT MATERIAL.
- 26 STEAM VENT TO REMAIN. CONTRACTOR SHALL PROTECT FROM DAMAGE DURING CONSTRUCTION OPERATIONS.
- 27 METAL PLATE TO REMAIN. CLEAN, PRIME, AND PAINT TO MATCH ADJACENT WALL.
- 28 INSPECT JUNCTION BOX. REPAIR FOR WEATHERTIGHTNESS AND INSTALL GASKET.
- 29 PATCH HOLES FROM REMOVED CHAINS TO MATCH ADJACENT WALL.
- 30 REINSTALL SALVAGED CORNER GUARD.
- 31 EXISTING CHAIN TO REMAIN.
- 32 INSTALL BACKER ROD AND SEALANT ON EXTERIOR AND INTERIOR SIDES OF JOINT.
- 33 REPLACE DETERIORATED CORNICE AND GUTTER ASSEMBLY TO REPLICATE ORIGINAL CONSTRUCTION.
- 34 REPLACE DETERIORATED RAKE ASSEMBLY TO REPLICATE ORIGINAL CONSTRUCTION.
- 35 REINSTALL SALVAGED KEYBOX.
- 36 INSTALL NEW STEEL LINTEL.
- 37 PROVIDE DOUBLE OFFSET IN DOWNSPOUT AROUND CONDUIT.

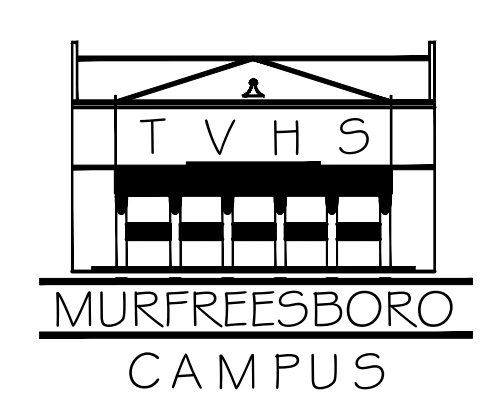
ELEVATION LEGEND

- EXISTING CONSTRUCTION TO REMAIN
- NEW CONSTRUCTION
- MOCK-UP LOCATION

100% FOR CONSTRUCTION



Tennessee Valley Healthcare System



Project Title:	REVITALIZATION OF ENGINEERING & SUPPORT BUILDINGS
Drawing Title:	BUILDING 12 EXTERIOR ELEVATIONS
Approved By:	
Building Number:	12
Checked By:	DN
Drawn By:	SJ

Date:	02-16-2016
Project No.:	626A4-15-104
Drawing No.:	A200
Dwg. of:	

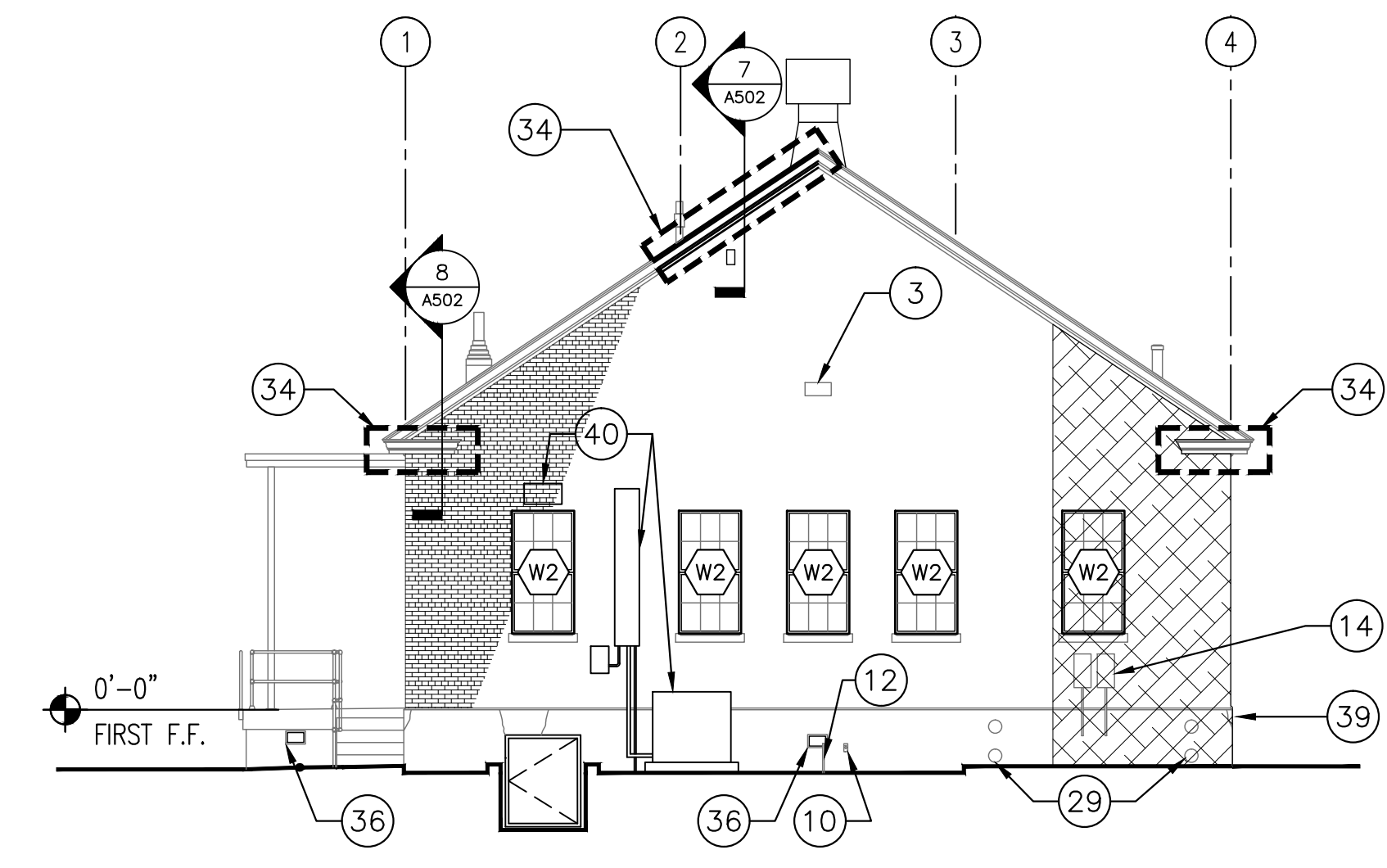
Department of Veterans Affairs

GENERAL ELEVATION NOTES

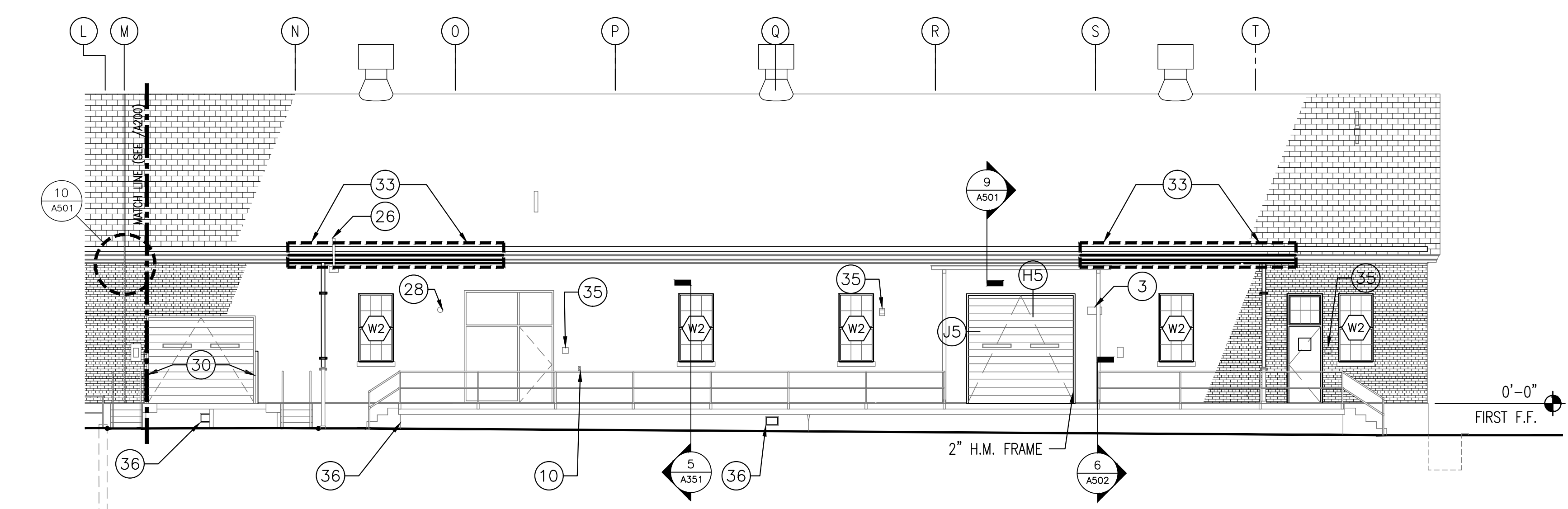
- A. REPOINT DAMAGED AND OTHERWISE UNSOUND MORTAR AS REQUIRED AND AS INDICATED.
- B. INSTALL BREATHABLE, WATER-REPELLENT SEALANT TO ALL EXTERIOR MASONRY.
- C. PAINT EXTERIOR CONCRETE FOUNDATION WALL.
- D. SURFACE-MOUNTED ELECTRICAL PANELS SHALL REMAIN IN PLACE UNDISTURBED. CONTRACTOR SHALL PROTECT PANELS FROM DAMAGE DURING CONSTRUCTION OPERATIONS.
- E. BRACKET AND UNISTRUT-MOUNTED PIPING AND CONDUITS SHALL REMAIN IN PLACE UNDISTURBED. CONTRACTOR SHALL PROTECT THEM FROM DAMAGE DURING CONSTRUCTION OPERATIONS. LOOSE BRACKETS AND UNISTRUT SHALL BE RE-ANCHORED.

ELEVATION KEY NOTES

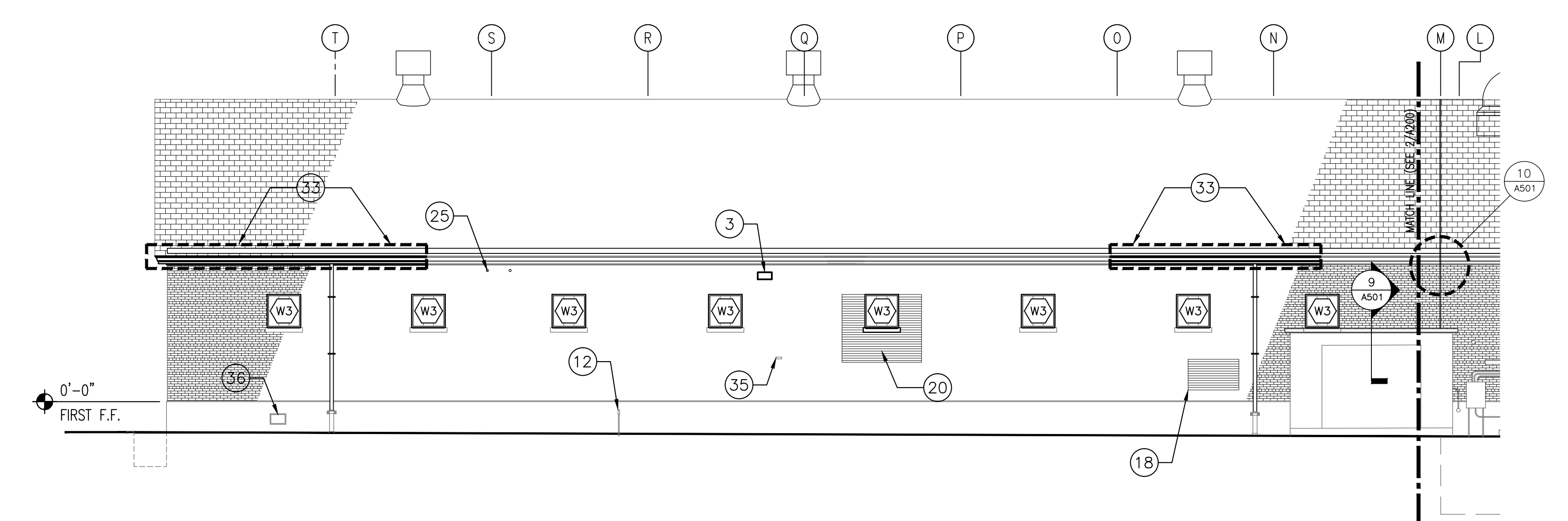
- 1. REINSTALL SALVAGED HOSE BRACKET WITH STAINLESS STEEL TAPCON SCREWS.
- 2. REINSTALL SALVAGED SIGN WITH STAINLESS STEEL TAPCON FASTENERS.
- 3. LIGHT FIXTURE. SEE ME DRAWINGS.
- 4. CLEAN, REPAIR, PRIME AND PAINT METAL VENT BLACK. INSTALL INSECT SCREEN ON INTERIOR SIDE OF VENT.
- 5. CLEAN AND REPAIR FIRE DEPT. CONNECTION. REPAIR, PRIME, AND PAINT METAL TRIM.
- 6. CLEAN, PRIME, AND PAINT ALARM BELL.
- 7. CLEAN AND SEAL PERIMETER OF EXISTING PIPE.
- 8. RELOCATED EXHAUST FAN. SEE ME DRAWINGS. CLEAN, PRIME, AND PAINT TO MATCH BRICK. SEAL PERIMETER AT BRICK.
- 9. INFILL OPENING WITH CMU. INSET FACE OF MASONRY 1" FROM EXTERIOR FACE OF EXISTING WALL AND COORDINATE WITH REPLACEMENT OF HOSE BIB. SEE ME DRAWINGS.
- 10. HOSE BIB TO REMAIN. CONTRACTOR SHALL PROTECT FROM DAMAGE DURING CONSTRUCTION OPERATIONS.
- 11. PATCH WALL WHERE ABANDONED CONDUIT WAS REMOVED.
- 12. CLEAN AND PAINT EXISTING CONDUIT TO MATCH WALL.
- 13. CLEAN, PRIME, PAINT TO MATCH BRICK AND REINSTALL METAL PIPING SHROUD.
- 14. ELECTRICAL PANEL TO REMAIN. CONTRACTOR SHALL PROTECT FROM DAMAGE DURING CONSTRUCTION OPERATIONS.
- 15. PAD-MOUNTED CONDENSING UNIT TO REMAIN. CONTRACTOR SHALL PROTECT UNIT FROM DAMAGE DURING CONSTRUCTION OPERATIONS.
- 16. HOSE BIB TO BE REPLACED. SEE ME SERIES DRAWINGS.
- 17. INSTALL NEW 12" W X 8" H METAL FOUNDATION VENT. VENT TO BE FABRICATED TO MATCH ORIGINAL WITH INSECT SCREEN. PAINT BLACK.
- 18. INSTALL BRICK TO MATCH EXISTING AND TOOTH IN TO MATCH COURSING.
- 19. INFILL OPENING WITH CMU. INSET FACE OF MASONRY 1" FROM EXTERIOR FACE OF EXISTING WALL. COORDINATE WORK WITH EXISTING CONDUIT TO REMAIN WHERE APPLICABLE.
- 20. INFILL ABANDONED LOUVER OPENING WITH BRICK AND PRECAST SILL TO MATCH EXISTING. ADJACENT CONSTRUCTION AS NEEDED TO INSTALL NEW WINDOW.
- 21. PATCH HOLES IN WALL TO MATCH ADJACENT MATERIAL.
- 22. INSTALL NEW 18" W X 12" H METAL FOUNDATION VENT. VENT TO BE FABRICATED TO MATCH ORIGINAL WITH INSECT SCREEN. PAINT BLACK.
- 23. PATCH HOLES IN WALL TO MATCH ADJACENT MATERIAL.
- 24. INFILL VENT OPENING TO MATCH ADJACENT MATERIAL.
- 25. PATCH HOLES FROM BRACKET TO MATCH ADJACENT MATERIAL.
- 26. STEAM VENT TO REMAIN. CONTRACTOR SHALL PROTECT FROM DAMAGE DURING CONSTRUCTION OPERATIONS.
- 27. METAL PLATE TO REMAIN. CLEAN, PRIME, AND PAINT TO MATCH ADJACENT WALL.
- 28. INSPECT JUNCTION BOX, REPAIR FOR WEATHERTIGHTNESS AND INSTALL GASKET.
- 29. PATCH HOLES FROM REMOVED/CAPPED PIPING TO MATCH ADJACENT WALL.
- 30. REINSTALL SALVAGED CORNER GUARD.
- 31. EXISTING CHAIN TO REMAIN.
- 32. INSTALL BACKER ROD AND SEALANT ON EXTERIOR AND INTERIOR SIDES OF JOINT.
- 33. REPLACE DETERIORATED CORNICE AND GUTTER ASSEMBLY TO REPLICATE ORIGINAL CONSTRUCTION.
- 34. REPLACE DETERIORATED RAKE ASSEMBLY TO REPLICATE ORIGINAL CONSTRUCTION.
- 35. PATCH HOLES FROM REMOVED CONTROL SENSOR. SEE ME DRAWINGS.
- 36. CLEAN, PRIME, PAINT, AND REINSTALL 12" W X 8" H METAL VENT DISCONNECT LOW-VOLTAGE WIRE, WHERE PRESENT, FOR VENT INSTALLATION AND RECONNECT.
- 37. INFILL ABANDONED LOUVER OPENING WITH BRICK AND PRECAST SILL TO MATCH EXISTING. ADJACENT CONSTRUCTION AS NEEDED TO INSTALL NEW WINDOW. TOOTH IN EXTERIOR AND INTERIOR MASONRY.
- 38. INFILL ABANDONED LOUVER OPENING WITH BRICK WITHIN EXISTING MASONRY OPENING TO MATCH EXISTING, ADJACENT CONSTRUCTION.
- 39. PATCH CONCRETE. CORE CONCRETE AND EPOXY EMBED FOUR BARS INTO RETAINED WALL AND CAST CONCRETE PATCH TO MATCH ORIGINAL PROFILE OF WALL CORNER.
- 40. INSTALL NEW DUCTLESS SPLIT SYSTEM. SEE ME DRAWINGS FOR MORE INFORMATION.



3 EAST ELEVATION
 A201 1/8" = 1'-0"
 NOTE:
 REPOINT 10% OF MASONRY EXCEPT WHERE NOTED OTHERWISE.



2 SOUTH ELEVATION
 A201 1/8" = 1'-0"
 NOTE:
 REPOINT 10% OF MASONRY EXCEPT WHERE NOTED OTHERWISE.

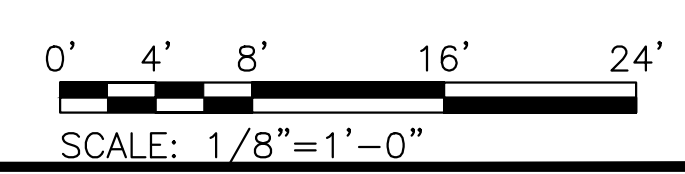


1 NORTH ELEVATION
 A201 1/8" = 1'-0"
 NOTE:
 REPOINT 10% OF MASONRY EXCEPT WHERE NOTED OTHERWISE.

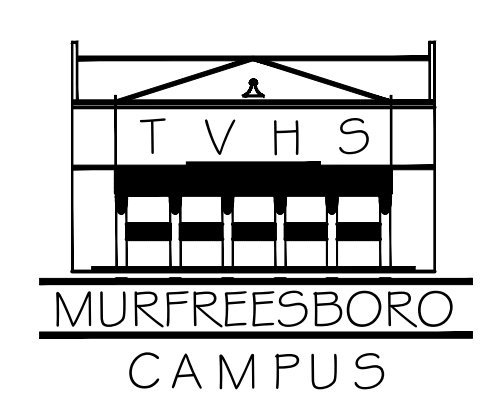
ELEVATION LEGEND

- EXISTING CONSTRUCTION TO REMAIN
- NEW CONSTRUCTION
- MOCK-UP LOCATION

100% FOR CONSTRUCTION



Tennessee Valley Healthcare System



Project Title:	REVITALIZATION OF ENGINEERING & SUPPORT BUILDINGS
Drawing Title:	BUILDING 14 EXTERIOR ELEVATIONS
Approved By:	
Building Number:	14
Checked By:	DN
Drawn By:	SJ

Date:	02-16-2016
Project No.:	626A4-15-104
DRAWING NO.:	A201
Dwg. of:	

Department of Veterans Affairs


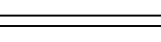

GENERAL ELEVATION NOTES

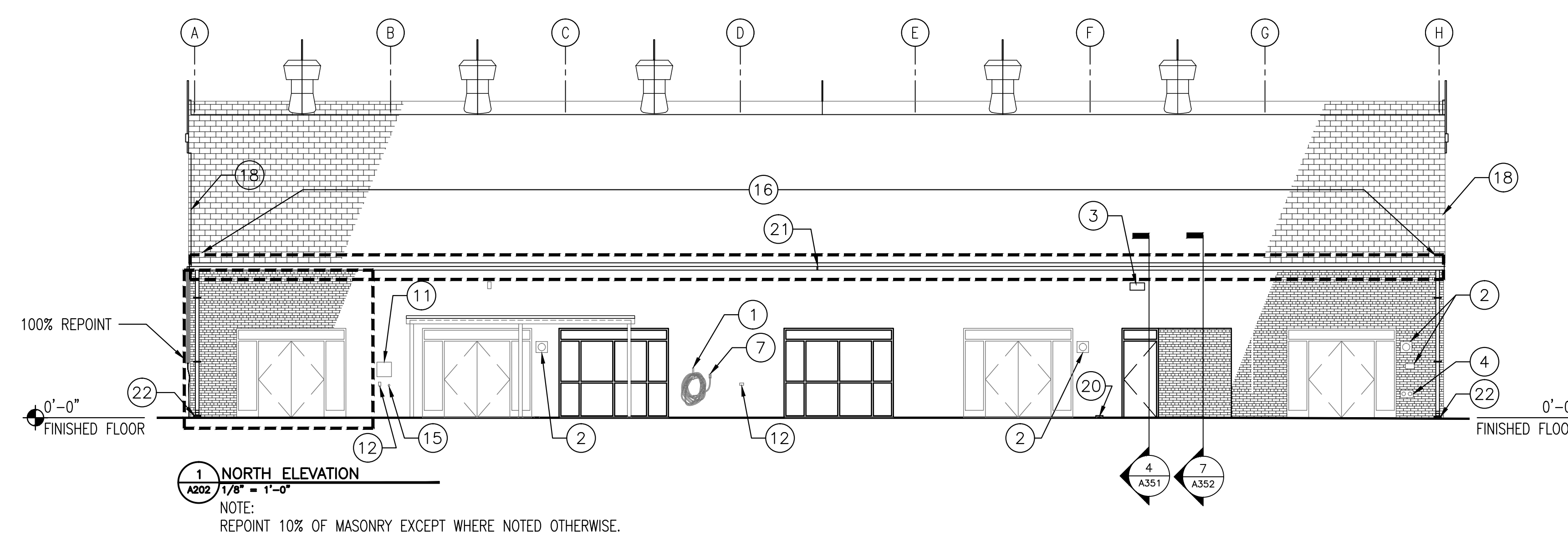
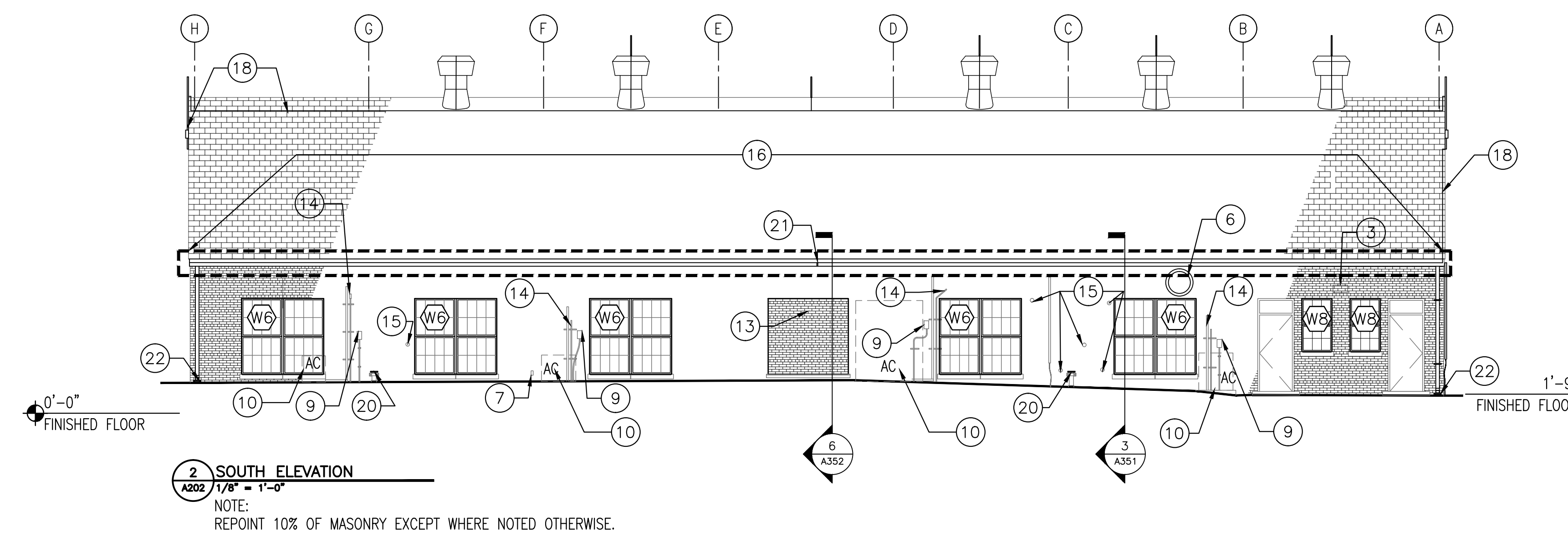
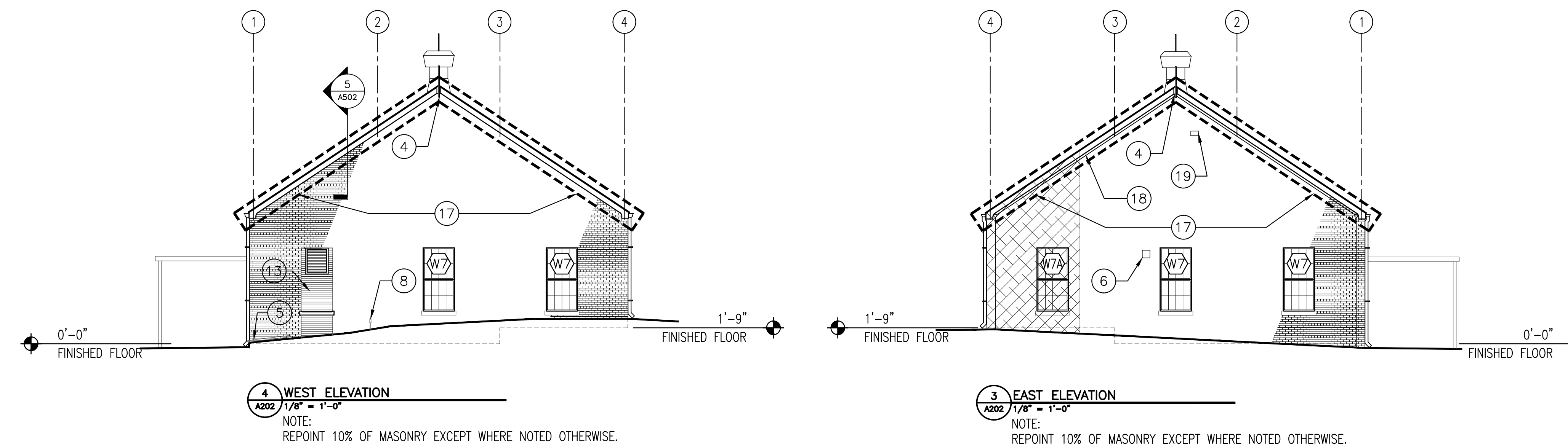
- A. REPOINT DAMAGED AND OTHERWISE UNSOUND MORTAR AS REQUIRED AND AS INDICATED.
- B. INSTALL BREATHABLE, WATER-REPELLENT SEALANT TO ALL EXTERIOR MASONRY.
- C. PAINT EXTERIOR CONCRETE FOUNDATION WALL.
- D. SURFACE-MOUNTED ELECTRICAL PANELS SHALL REMAIN IN PLACE UNDISTURBED. CONTRACTOR SHALL PROTECT PANELS FROM DAMAGE DURING CONSTRUCTION OPERATIONS.
- E. BRACKET AND UNISTRUT-MOUNTED PIPING AND CONDUITS SHALL REMAIN IN PLACE UNDISTURBED. CONTRACTOR SHALL PROTECT THEM FROM DAMAGE DURING CONSTRUCTION OPERATIONS. LOOSE BRACKETS AND UNISTRUT SHALL BE RE-ANCHORED.

ELEVATION KEY NOTES

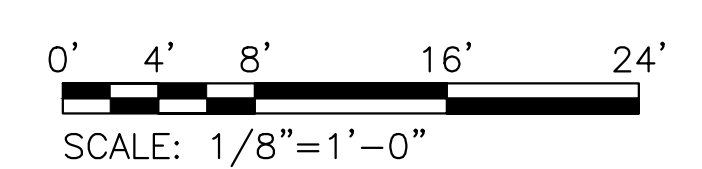
- 1 REINSTALL SALVAGED HOSE BRACKET WITH STAINLESS STEEL TAPCON SCREWS.
- 2 REINSTALL SALVAGED SIGN WITH STAINLESS STEEL TAPCON FASTENERS.
- 3 LIGHT FIXTURE. SEE ME DRAWINGS.
- 4 CLEAN AND REPAIR FIRE DEPARTMENT CONNECTION. REPAIR, PRIME, AND PAINT METAL TRIM.
- 5 CLEAN AND SEAL PERIMETER OF EXISTING FIRE TEST PIPE.
- 6 RELOCATED EXHAUST FAN. SEE ME DRAWINGS. CLEAN, PRIME, AND PAINT TO MATCH BRICK. SEAL PERIMETER AT BRICK.
- 7 HOSE BIB TO REMAIN. CONTRACTOR SHALL PROTECT FROM DAMAGE DURING CONSTRUCTION OPERATIONS.
- 8 CLEAN AND PAINT EXISTING CONDUIT TO MATCH WALL.
- 9 ELECTRICAL PANEL TO REMAIN. CONTRACTOR SHALL PROTECT FROM DAMAGE DURING CONSTRUCTION OPERATIONS.
- 10 PAD-MOUNTED CONDENSING UNIT TO REMAIN. CONTRACTOR SHALL PROTECT UNIT FROM DAMAGE DURING CONSTRUCTION OPERATIONS.
- 11 PATCH BRICK TO MATCH ADJACENT MATERIAL. TOOTH IN BRICK.
- 12 ELECTRICAL DEVICE TO REMAIN.
- 13 INFILL WALL AS INDICATED.
- 14 EXISTING PIPING AND CONDUIT TO REMAIN. SEE ME DRAWINGS.
- 15 PATCH HOLES IN WALL TO MATCH ADJACENT MATERIAL.
- 16 REPLACE DETERIORATED FASCIA ASSEMBLY TO REPLICATE ORIGINAL CONSTRUCTION.
- 17 REPLACE DETERIORATED RAKE ASSEMBLY TO REPLICATE ORIGINAL CONSTRUCTION.
- 18 LIGHTNING PROTECTION SYSTEM. SEE ELECTRICAL DRAWINGS.
- 19 PATCH HOLES IN WALL WHERE ANTENNA WAS REMOVED.
- 20 CAP ALL ABANDONED EXISTING DRAINAGE BOOTS.
- 21 EXPANSION JOINT AT HALF ROUND COPPER GUTTER.
- 22 INSTALL SPLASH BLOCKS AT BASE OF NEW COPPER DOWNSPOUTS AS NEEDED TO DIVERT AND DISPERSE DISCHARGED WATER.

ELEVATION LEGEND

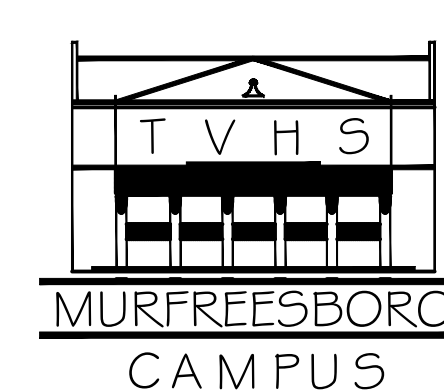
-  EXISTING CONSTRUCTION TO REMAIN
-  NEW CONSTRUCTION
-  MOCK-UP LOCATION



100% FOR CONSTRUCTION



Tennessee Valley Healthcare System



Project Title:	REVITALIZATION OF ENGINEERING & SUPPORT BUILDINGS
Drawing Title:	BUILDING 13 EXTERIOR ELEVATIONS
Approved By:	
Checked By:	DN
Building Number:	13
Location:	MURFREESBORO, TENNESSEE
Drawn By:	SJ

Date:	02-16-2016
Project No.:	626A4-15-104
Drawing No.:	A202
Dwg. of:	

Department of Veterans Affairs

GENERAL ELEVATION NOTES

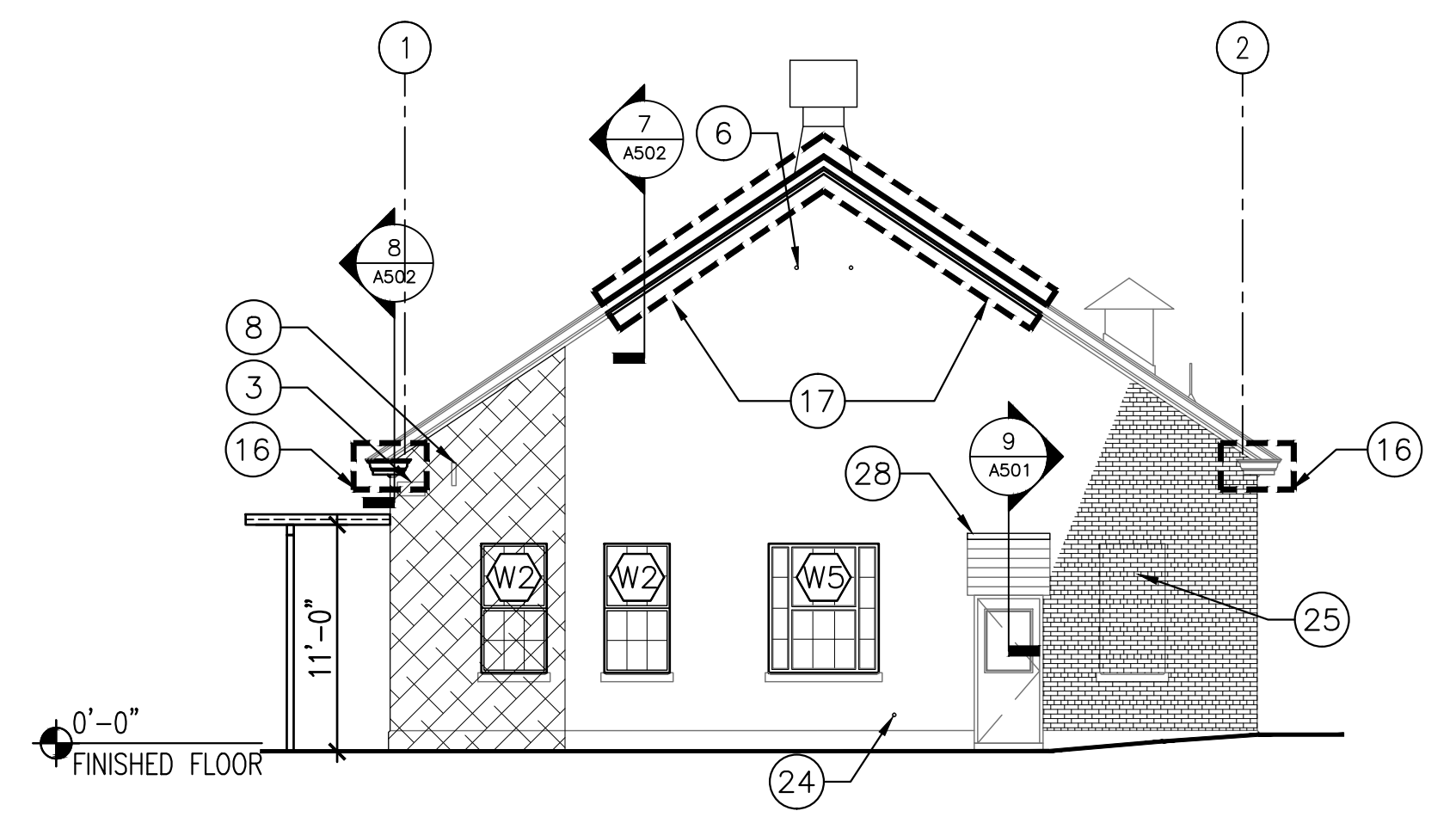
- A. REPOINT DAMAGED AND OTHERWISE UNSOUND MORTAR AS REQUIRED AND AS INDICATED.
- B. INSTALL BREATHABLE, WATER-REPELLENT SEALANT TO ALL EXTERIOR MASONRY.
- C. PAINT EXTERIOR CONCRETE FOUNDATION WALL.
- D. SURFACE-MOUNTED ELECTRICAL PANELS SHALL REMAIN IN PLACE UNDISTURBED. CONTRACTOR SHALL PROTECT PANELS FROM DAMAGE DURING CONSTRUCTION OPERATIONS.
- E. BRACKET AND UNISTRUT-MOUNTED PIPING AND CONDUITS SHALL REMAIN IN PLACE UNDISTURBED. CONTRACTOR SHALL PROTECT THEM FROM DAMAGE DURING CONSTRUCTION OPERATIONS. LOOSE BRACKETS AND UNISTRUT SHALL BE RE-ANCHORED.

ELEVATION KEY NOTES

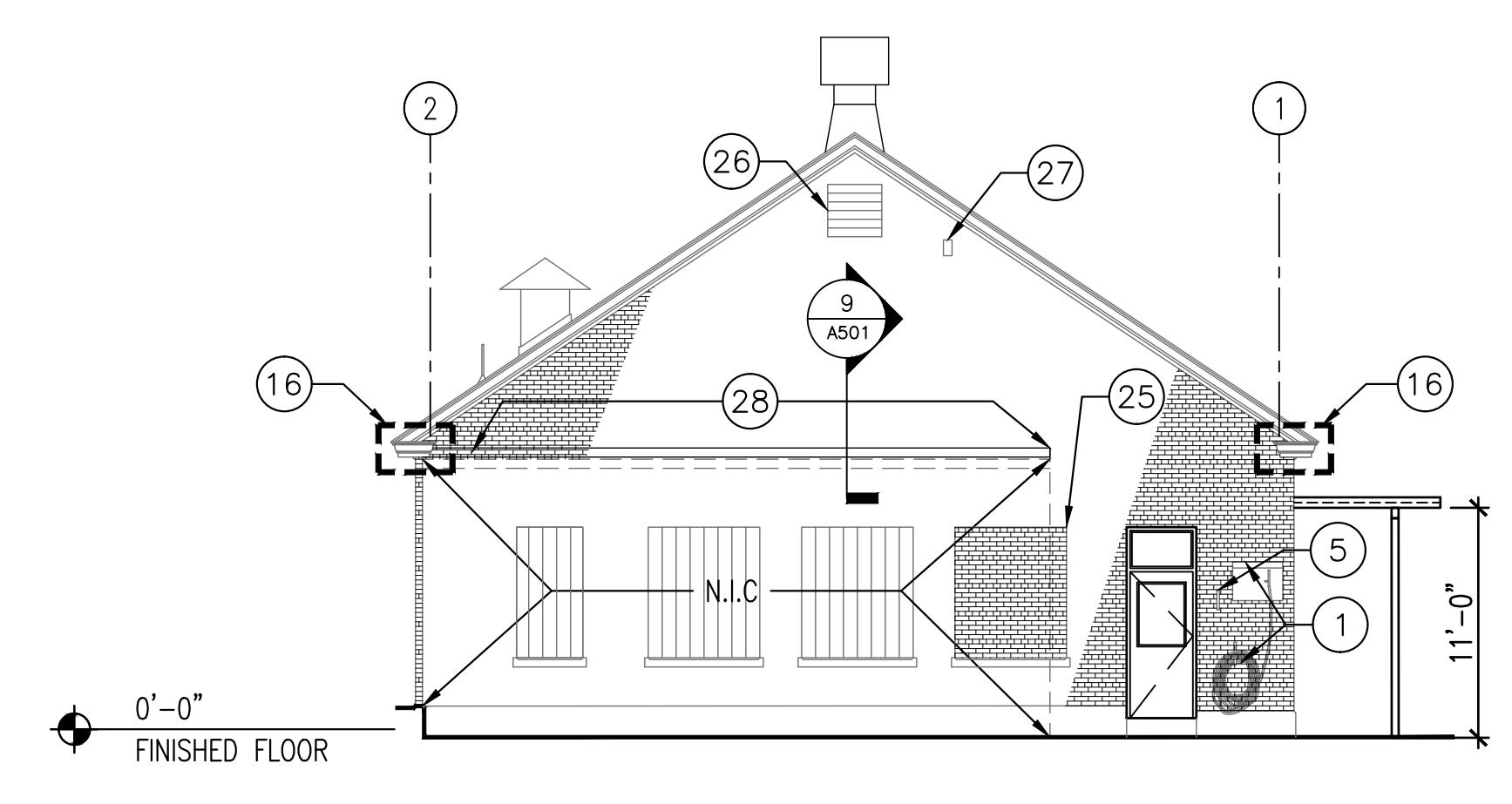
- 1 REINSTALL SALVAGED HOSE BRACKET AND HOOD WITH STAINLESS STEEL TAPCON SCREWS.
- 2 REINSTALL SALVAGED SIGN WITH STAINLESS STEEL TAPCON FASTENERS.
- 3 LIGHT FIXTURE. SEE ME DRAWINGS.
- 4 PATCH HOLES FROM REMOVAL OF LIGHT FIXTURE AND SURFACE-MOUNTED BRANCH CIRCUITRY. SEE ME DRAWINGS..
- 5 REINSTALL SALVAGED METAL BRACKET/ LANTERN.
- 6 PATCH HOLES IN WALL TO MATCH ADJACENT MATERIALS WHERE METAL BRACKET WAS REMOVED.
- 7 HOSE BIB TO REMAIN. CONTRACTOR SHALL PROTECT FROM DAMAGE DURING CONSTRUCTION OPERATIONS.
- 8 CONDUIT TO REMAIN.
- 9 ELECTRICAL PANEL TO REMAIN. CONTRACTOR SHALL PROTECT FROM DAMAGE DURING CONSTRUCTION OPERATIONS.
- 10 PAD-MOUNTED CONDENSING UNIT TO REMAIN. CONTRACTOR SHALL PROTECT UNIT FROM DAMAGE DURING CONSTRUCTION OPERATIONS.
- 11 PATCH HOLES IN WALL TO MATCH ADJACENT MATERIALS WHERE ELECTRICAL DEVICE AND BRANCH CIRCUITRY WAS REMOVED.
- 12 VERIFY ITEM TO BE RELOCATED IN NEW WORK.
- 13 PATCH HOLES IN WALL TO MATCH ADJACENT MATERIALS.
- 14 EXISTING PIPING AND CONDUIT TO REMAIN. SEE ME DRAWINGS FOR ADDITIONAL INFORMATION.
- 15 PATCH HOLES IN WALL TO MATCH ADJACENT MATERIAL.
- 16 REPLACE DETERIORATED CORNICE/GUTTER ASSEMBLY TO REPLICATE ORIGINAL CONSTRUCTION.
- 17 REPLACE DETERIORATED RAKE ASSEMBLY TO REPLICATE ORIGINAL CONSTRUCTION.
- 18 PATCH HOLES IN WALL WHERE PIPE WAS REMOVED. SEE ME DRAWINGS.
- 19 RELOCATED EXHAUST FAN. SEAL PERIMETER AT FACE OF WALL. SEE ME DRAWINGS.
- 20 CLEAN, PRIME, PAINT, AND REINSTALL SALVAGED CORNERGUARD.
- 21 NOT USED.
- 22 WALL-MOUNTED DEVICE TO REMAIN.
- 23 PATCH HOLES IN WALL WHERE ALARM BELL WAS REMOVED. SEE ME DRAWINGS.
- 24 PATCH HOLES IN WALL WHERE CABLE WAS REMOVED. SEE ME DRAWINGS.
- 25 INFILL OPENING WITH WITHIN EXISTING MASONRY OPENING TO MATCH EXISTING, ADJACENT CONSTRUCTION.
- 26 CLEAN AND REPAIR EXISTING LOUVER. INSTALL FLASHING AT HEAD AND SEAL PERIMETER.
- 27 PATCH HOLES IN WALL WHERE ANTENNA AND CABLING WAS REMOVED. SEE ME DRAWINGS.
- 28 CUT CONTINUOUS REGLET AND INSTALL NEW FLASHING.
- 29 INSTALL STEEL BOLLARD. SEE 7/A351 FOR DETAIL.

ELEVATION LEGEND

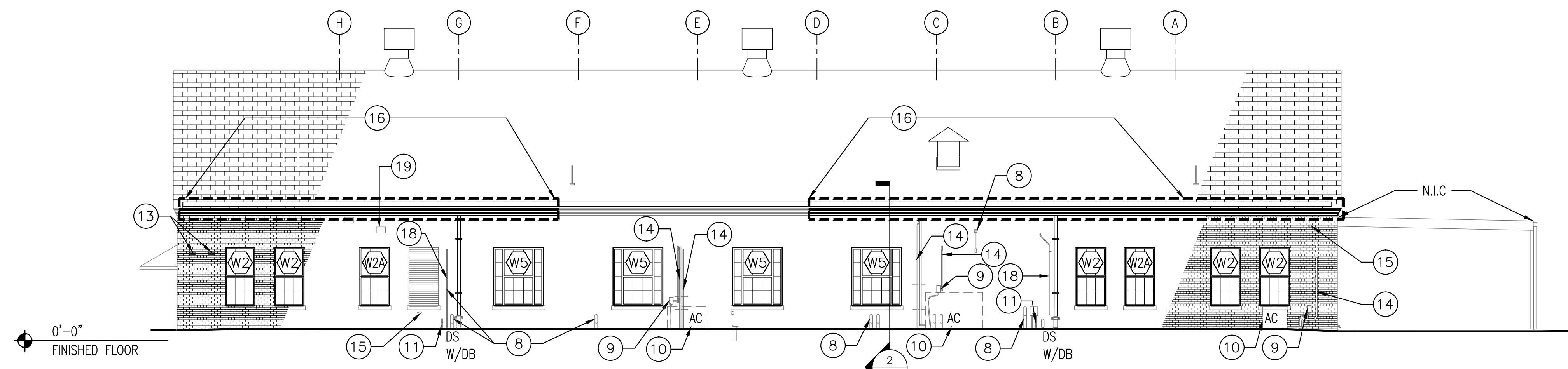
- EXISTING CONSTRUCTION TO REMAIN
- NEW CONSTRUCTION
- MOCK-UP LOCATION



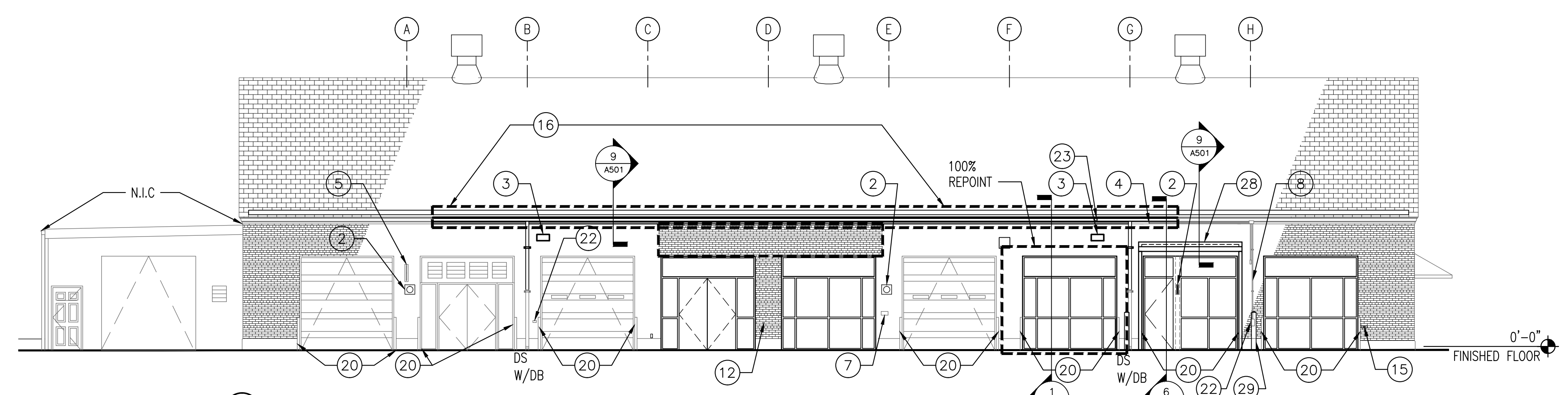
4 WEST ELEVATION
 A203 1/8" = 1'-0"
 NOTE:
 REPOINT 10% OF MASONRY EXCEPT WHERE NOTED OTHERWISE.



3 EAST ELEVATION
 A203 1/8" = 1'-0"
 NOTE:
 REPOINT 10% OF MASONRY EXCEPT WHERE NOTED OTHERWISE.

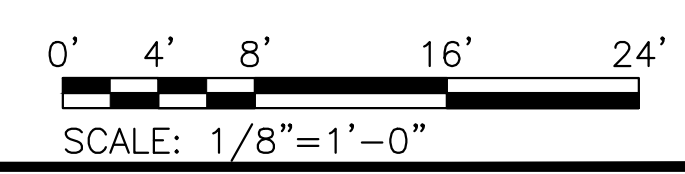


2 SOUTH ELEVATION
 A203 1/8" = 1'-0"
 NOTE:
 REPOINT 10% OF MASONRY EXCEPT WHERE NOTED OTHERWISE.

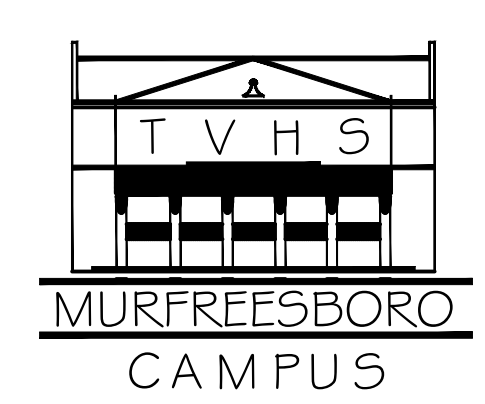


1 NORTH ELEVATION
 A203 1/8" = 1'-0"
 NOTE:
 REPOINT 10% OF MASONRY EXCEPT WHERE NOTED OTHERWISE.

100% FOR CONSTRUCTION



Tennessee Valley Healthcare System



590 Means St., W.W. Ste. 200
 Atlanta, GA 30318
 404.214.9774



Project Title:	REVITALIZATION OF ENGINEERING & SUPPORT BUILDINGS	Date:	02-16-2016
Drawing Title:	BUILDING 15 EXTERIOR ELEVATIONS	Project No.:	626A4-15-104
Approved By:		Drawing No.:	A203
Building Number:	15	Dwg. of:	
Checked By:	DN	Drawn By:	SJ

Department of Veterans Affairs

GENERAL ELEVATION NOTES

- A. REPOINT DAMAGED AND OTHERWISE UNSOUND MORTAR AS REQUIRED AND AS INDICATED.
- B. INSTALL BREATHABLE, WATER-REPELLENT SEALANT TO ALL EXTERIOR MASONRY.
- C. PAINT EXTERIOR CONCRETE FOUNDATION WALL.
- D. SURFACE-MOUNTED ELECTRICAL PANELS SHALL REMAIN IN PLACE UNDISTURBED. CONTRACTOR SHALL PROTECT PANELS FROM DAMAGE DURING CONSTRUCTION OPERATIONS.
- E. BRACKET AND UNISTRUT-MOUNTED PIPING AND CONDUITS SHALL REMAIN IN PLACE UNDISTURBED. CONTRACTOR SHALL PROTECT THEM FROM DAMAGE DURING CONSTRUCTION OPERATIONS. LOOSE BRACKETS AND UNISTRUT SHALL BE RE-ANCHORED.

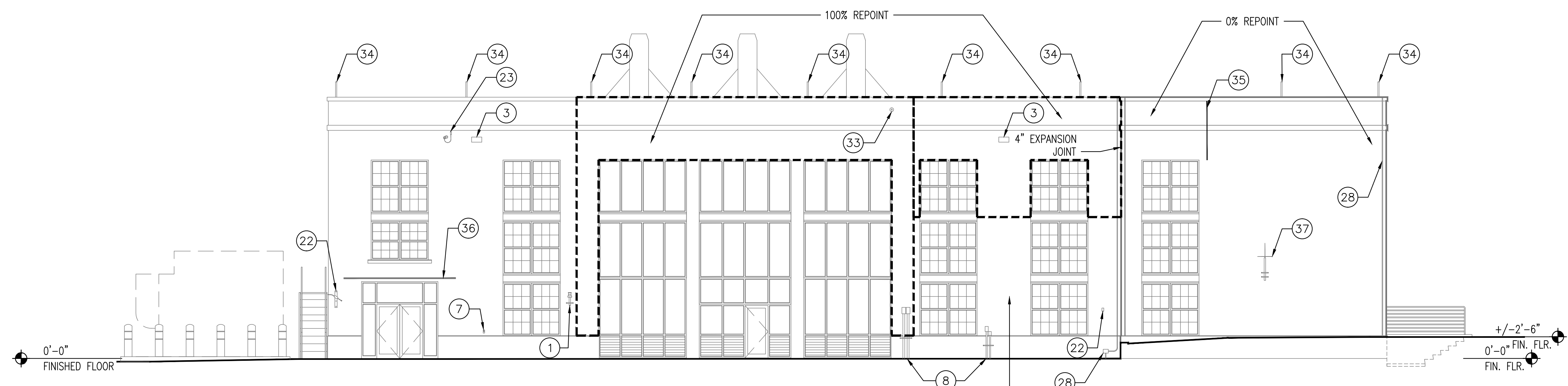
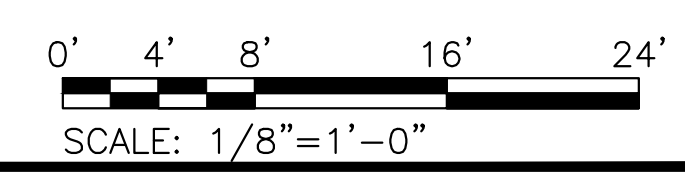
ELEVATION KEY NOTES

- 1 REINSTALL SALVAGED PIPING BRACKET.
- 2 REINSTALL SALVAGED SIGN WITH STAINLESS STEEL TAPCON FASTENERS.
- 3 EXISTING LIGHT FIXTURE TO BE REPLACED. REFER TO ELECTRICAL DRAWINGS.
- 4 REINSTALL SECURITY CAMERA IF REMOVED DURING CONSTRUCTION OPERATIONS. SEAL MOUNTING TO FACE OF WALL.
- 5 REINSTALL SALVAGED METAL BRACKET AND DEVICE. SEAL CABLE PENETRATION THROUGH WALL.
- 6 PATCH HOLES IN WALL TO MATCH ADJACENT MATERIALS WHERE METAL BRACKET WAS REMOVED.
- 7 HOSE BIB TO REMAIN. CONTRACTOR SHALL PROTECT FROM DAMAGE DURING CONSTRUCTION OPERATIONS.
- 8 CONDUIT TO REMAIN.
- 9 ELECTRICAL PANEL TO REMAIN. CONTRACTOR SHALL PROTECT FROM DAMAGE DURING CONSTRUCTION OPERATIONS.
- 10 PAD-MOUNTED ELECTRICAL PANEL TO REMAIN. CONTRACTOR SHALL PROTECT UNIT FROM DAMAGE DURING CONSTRUCTION OPERATIONS.
- 11 PATCH HOLES IN WALL TO MATCH ADJACENT MATERIALS WHERE ABANDONED CONDUIT WAS REMOVED.
- 12 THROUGH WALL SCUPPER TO BE REPLACED. SEE ROOF PLAN.
- 13 THROUGH WALL SCUPPER TO REMAIN. SEE ROOF PLAN.
- 14 EXISTING PIPING AND CONDUIT TO REMAIN. SEE ME DRAWINGS FOR ADDITIONAL INFORMATION.
- 15 PATCH HOLES IN WALL TO MATCH ADJACENT MATERIAL.
- 16 REPLACE CONDUCTOR HEAD TO REPLICATE ORIGINAL CONSTRUCTION.
- 17 REPLACE DOWNSPOUT TO REPLICATE ORIGINAL CONSTRUCTION. CONNECT TO EXISTING DRAINAGE SYSTEM.
- 18 EXISTING CONDUCTOR HEAD TO REMAIN.
- 19 EXISTING DOWNSPOUT TO REMAIN.
- 20 VENT PIPE TO REMAIN.
- 21 LOUVER TO REMAIN.
- 22 WALL-MOUNTED DEVICE TO REMAIN.
- 23 ALARM DEVICE TO REMAIN.
- 24 FIRE DEPARTMENT CONNECTION TO REMAIN.
- 25 PATCH HOLE TO MATCH EXISTING, ADJACENT CONSTRUCTION.
- 26 EXISTING AIR CONDITIONER TO REMAIN.
- 27 ANTENNA AND CABLE TO REMAIN.
- 28 LIGHTNING PROTECTION DOWNCONDUCTOR. SEE ELECTRICAL DRAWINGS.
- 29 FLUE AND APPURTENANT BRACKETS TO REMAIN.
- 30 REINSTALL SALVAGED BRACKET & MOP HANGER.
- 31 CAPPED PIPE TO REMAIN.
- 32 PATCH PIPE SLEEVE TO MATCH ADJACENT MATERIALS.
- 33 PATCH HOLES IN WALL TO MATCH ADJACENT MATERIALS WHERE BOLTS AND PLATES WERE REMOVED.
- 34 AIR TERMINAL. SEE ELECTRICAL.
- 35 INSTALL BACKER ROD AND SEALANT IN EXISTING JOINT.
- 36 REPOINT MORTAR JOINT.
- 37 ANTENNA TO REMAIN.

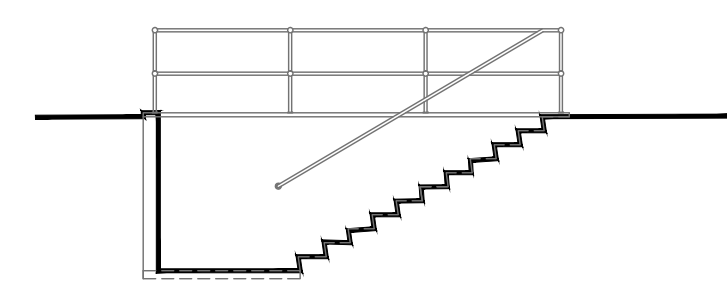
ELEVATION LEGEND

- EXISTING CONSTRUCTION TO REMAIN
- NEW CONSTRUCTION
- MOCK-UP LOCATION

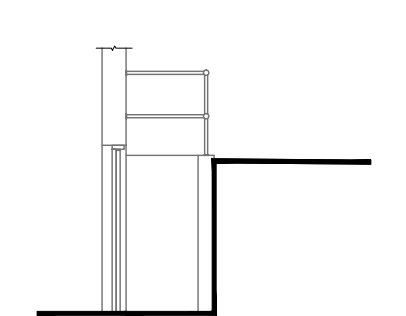
100% FOR CONSTRUCTION



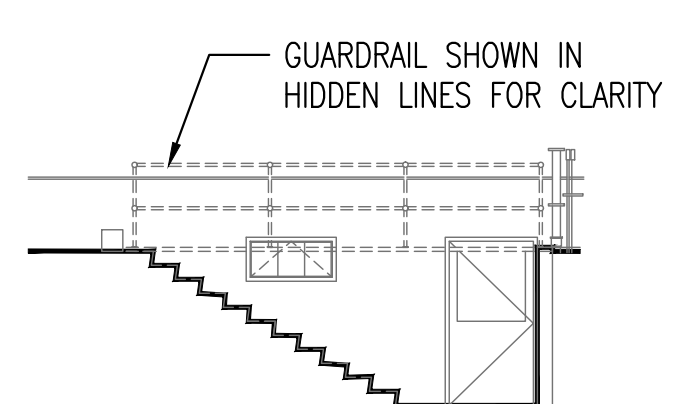
4 WEST ELEVATION
 A205 1/8" = 1'-0"
 NOTE:
 REPOINT 10% OF MASONRY EXCEPT WHERE NOTED OTHERWISE.



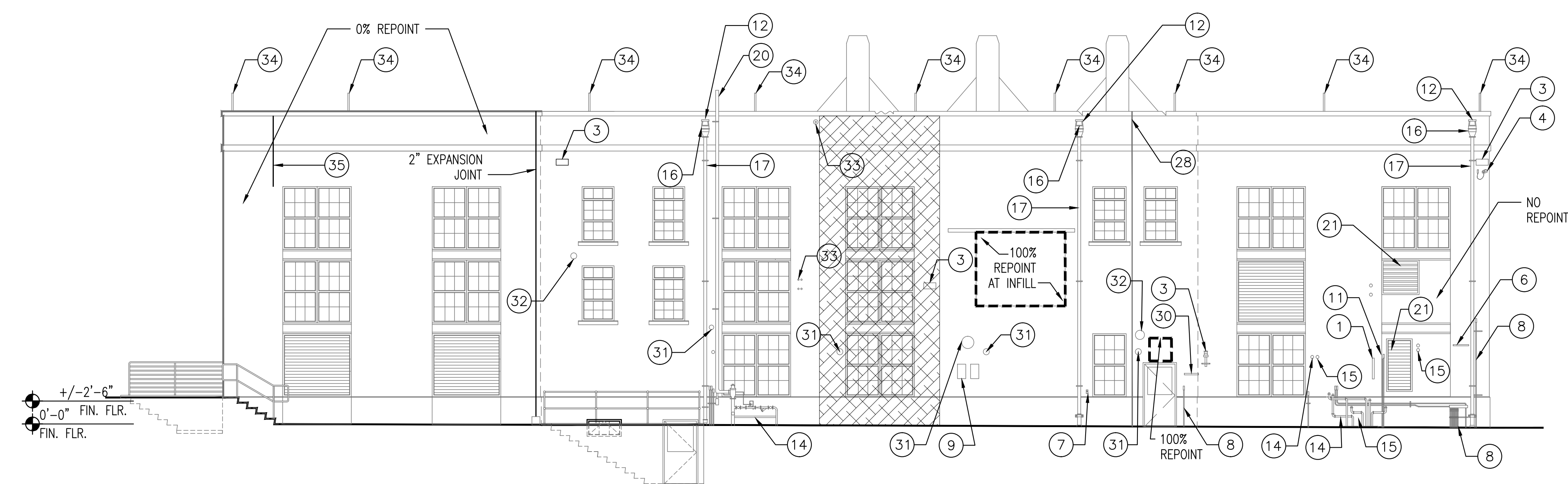
6 EAST AREAWAY - WEST
 A205 1/8" = 1'-0"
 NOTE:
 REPOINT 10% OF MASONRY EXCEPT WHERE NOTED OTHERWISE.



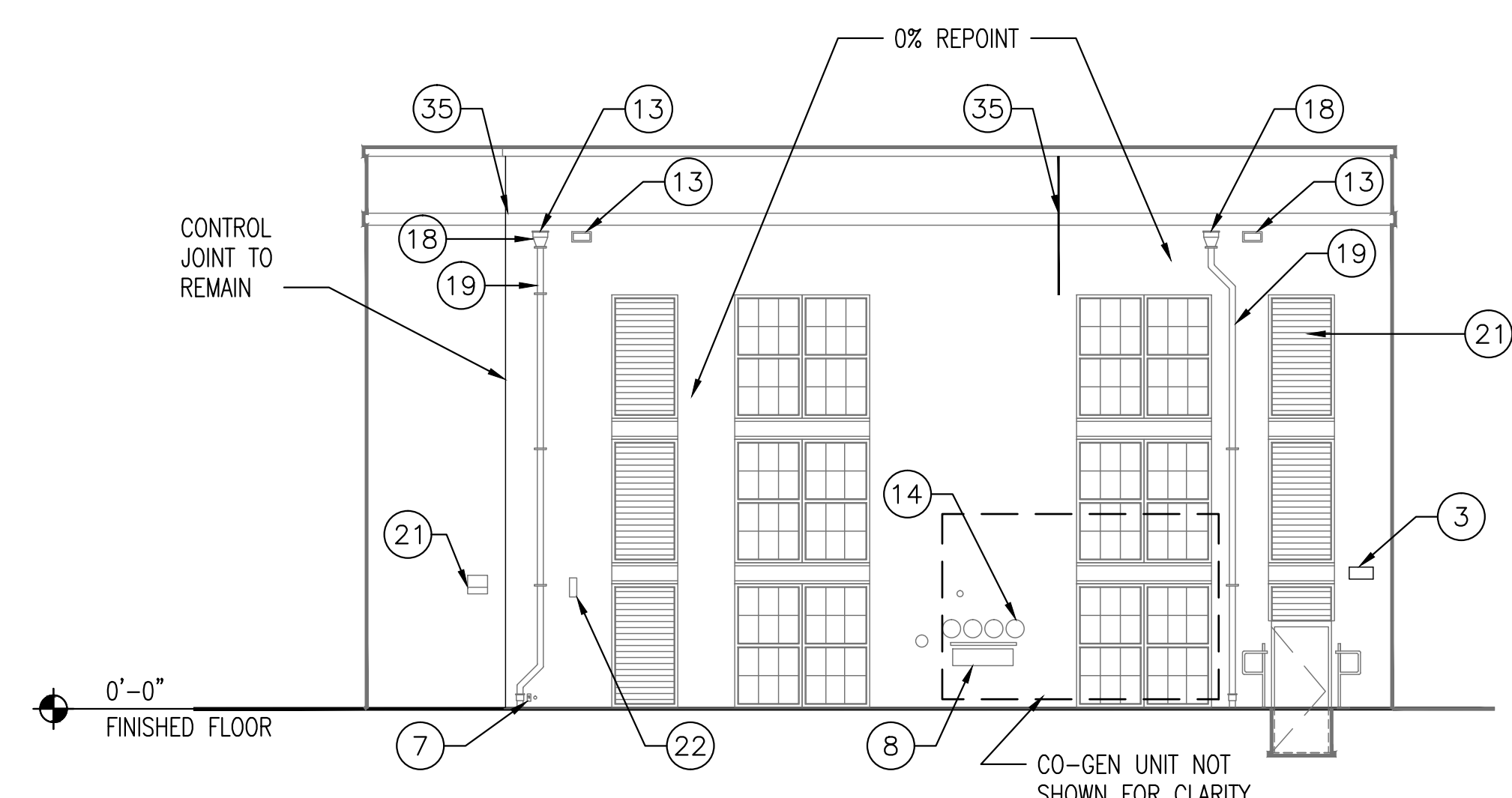
7 EAST AREAWAY - SOUTH
 A205 1/8" = 1'-0"
 NOTE:
 REPOINT 10% OF MASONRY EXCEPT WHERE NOTED OTHERWISE.



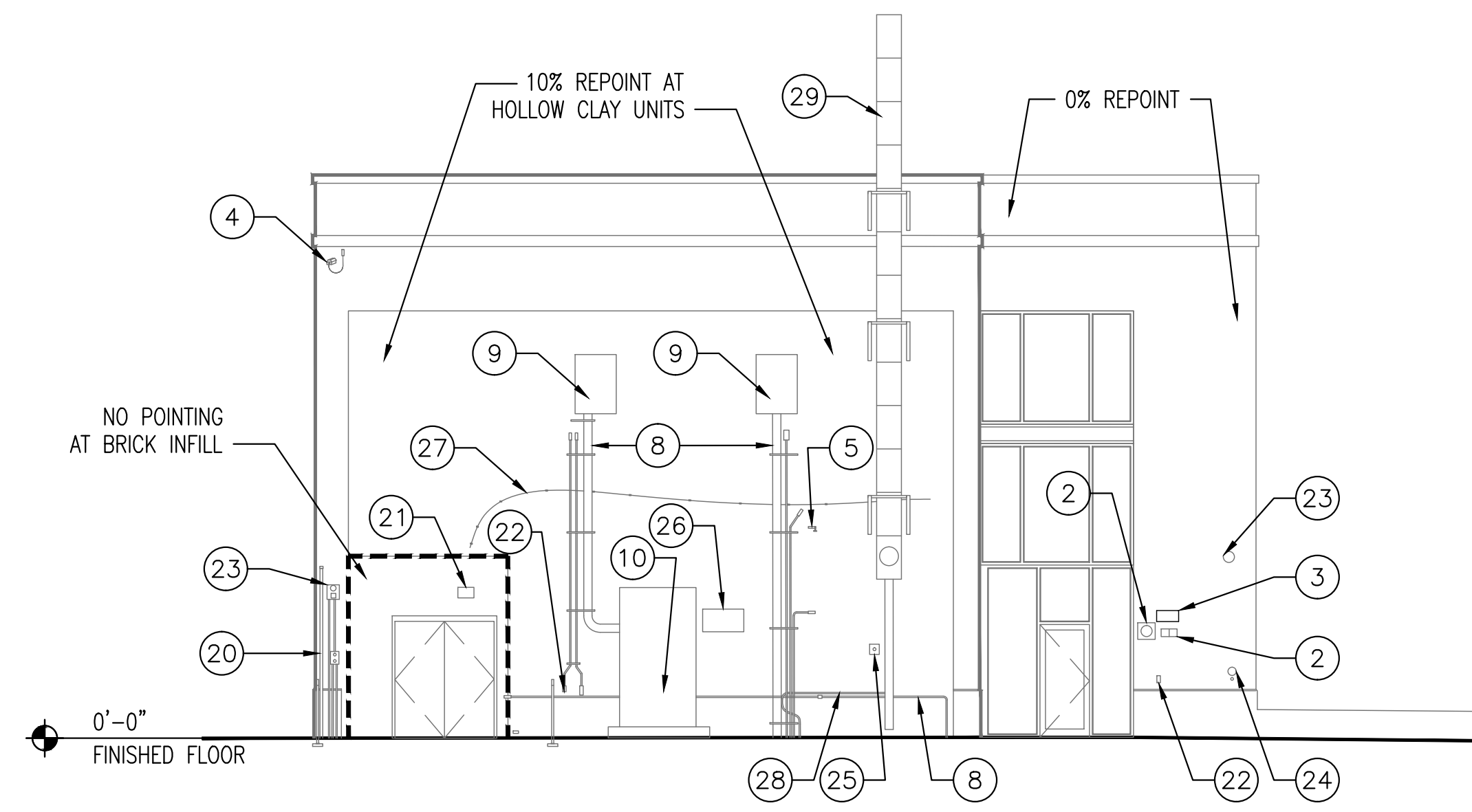
8 EAST AREAWAY - EAST
 A205 1/8" = 1'-0"
 NOTE:
 REPOINT 10% OF MASONRY EXCEPT WHERE NOTED OTHERWISE.



3 EAST ELEVATION
 A205 1/8" = 1'-0"
 NOTE:
 REPOINT 10% OF MASONRY EXCEPT WHERE NOTED OTHERWISE.



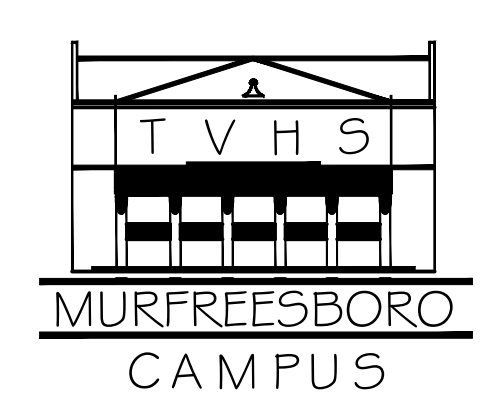
2 SOUTH ELEVATION
 A205 1/8" = 1'-0"
 NOTE:
 REPOINT 10% OF MASONRY EXCEPT WHERE NOTED OTHERWISE.



1 NORTH ELEVATION
 A205 1/8" = 1'-0"
 NOTE:
 REPOINT 10% OF MASONRY EXCEPT WHERE NOTED OTHERWISE.



Tennessee Valley Healthcare System



Project Title:	REVITALIZATION OF ENGINEERING & SUPPORT BUILDINGS
Drawing Title:	BUILDING 16 EXTERIOR ELEVATIONS
Approved By:	[Signature]
Building Number:	16
Checked By:	DN
Drawn By:	SJ

Date:	02-16-2016
Project No.:	626A4-15-104
Drawing No.:	A205
Dwg. of:	

Department of Veterans Affairs