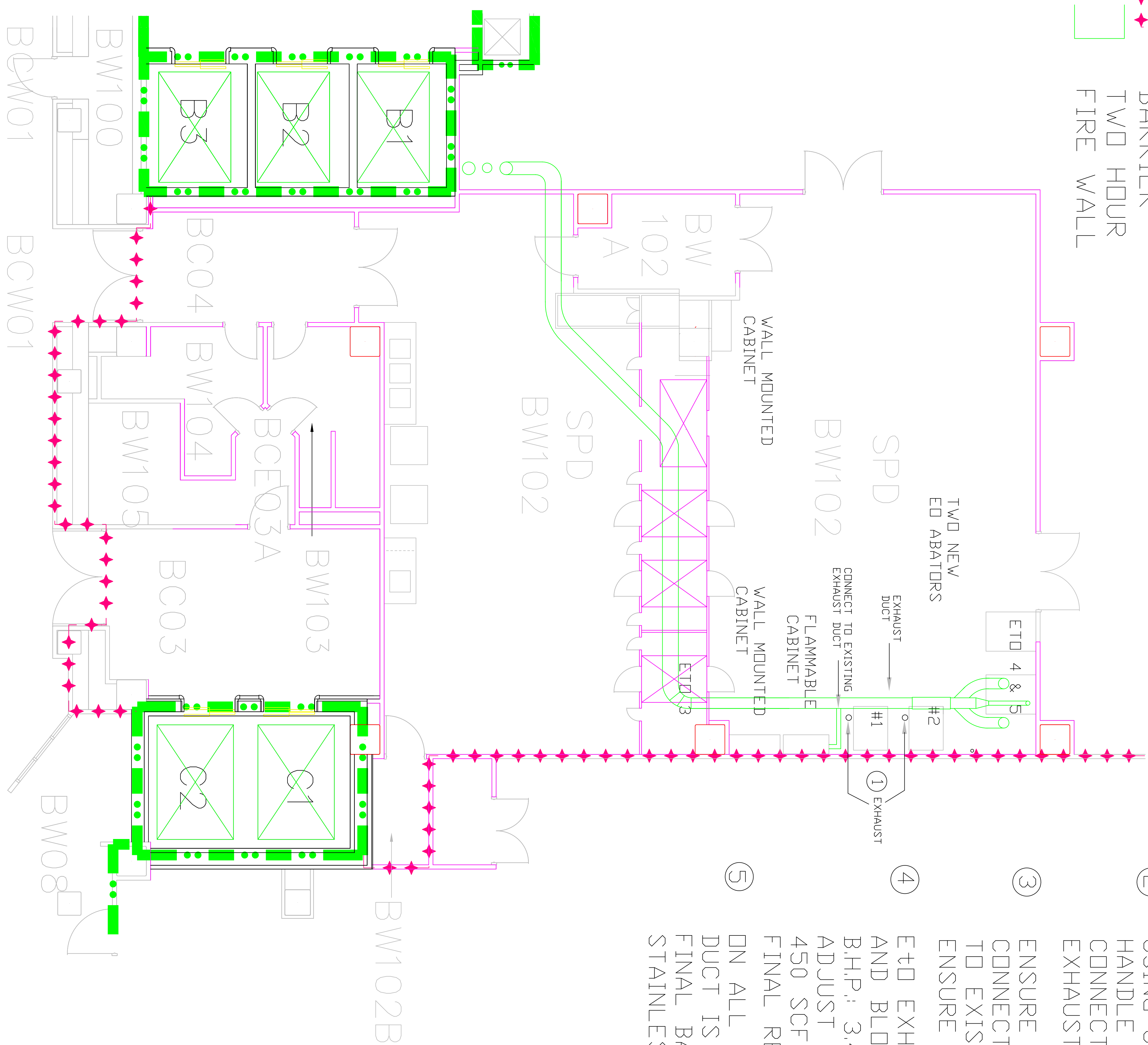
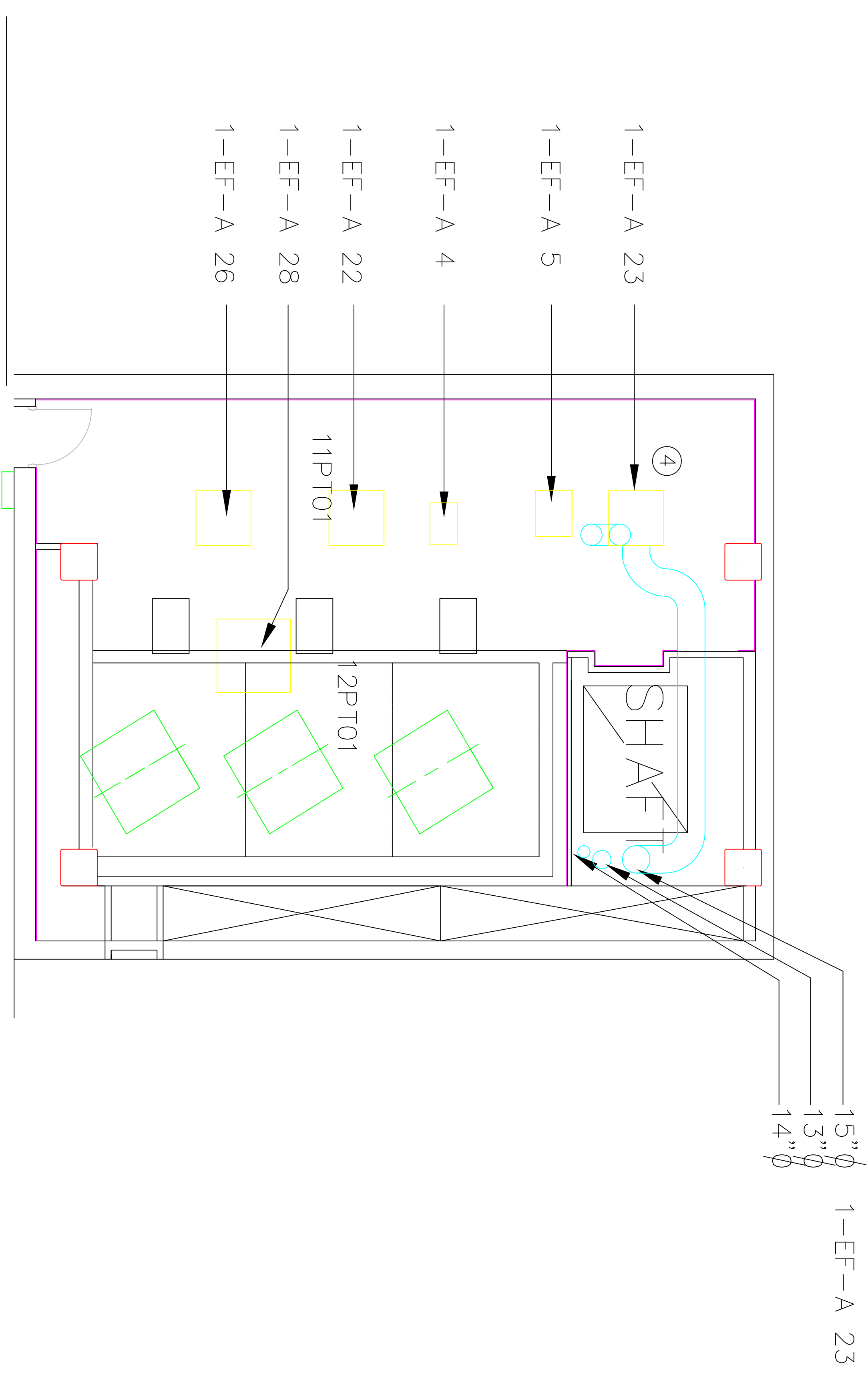


ONE HOUR
FIRE WALL
SMOKE
BARRIER
TWO HOUR
FIRE WALL



- ① INSTALL AIR MIXING VALVE ON EACH OF THE ED ABATOR AT THE EXHAUST.
- ② USING 6 INCH GALVANIZED METAL, RATED TO HANDLE THE PRESSURE THE SYSTEM DELIVERS, CONNECT BOTH ED ABATOR EXHAUST TO DEDICATED EXHAUST DUCT LOCATED IN CEILING ABOVE.
- ③ ENSURE OUTLET VENT LINE ON FLAMMABLE CABINET REMOVED. CONNECT 2 IN OUTLET TO ADAPTOR FOR A 4 IN DUCT. CONNECT TO EXISTING ETD DUCT IN CEILING. SEE 1-H1 FOR VENT LINE. ENSURE NEG 0.06 IN PRESSURE/40-50 CFM FROM CABINET IS ACHIEVED.
- ④ ETD EXHAUST FAN IS EF-A23, TWIN CITY FAN AND BLOWER, SIZE 245, STATIC PRESSURE: 3.13", B.H.P.: 3.4, CURRENT CFM: 3395, RPM: 1518. ADJUST SPEED, BELT, ETC TO OBTAIN AN ADDITIONAL 450 SCFM. PROVIDE BALANCING REPORT TO INDICATE FINAL READINGS.
- ⑤ ON ALL HORIZONTAL RUNS OF THE ETD EXHAUST, ENSURE THE EXISTING DUCT IS GAS TIGHT. REPAIR ANY FAILING WELDS, JOINTS, ETC. PRIOR FINAL BALANCING. USE ALL PRECAUTIONS NECESSARY WHEN WELDING STAINLESS STEEL.



ROOF OF BANK ELEVATOR

[illegible]