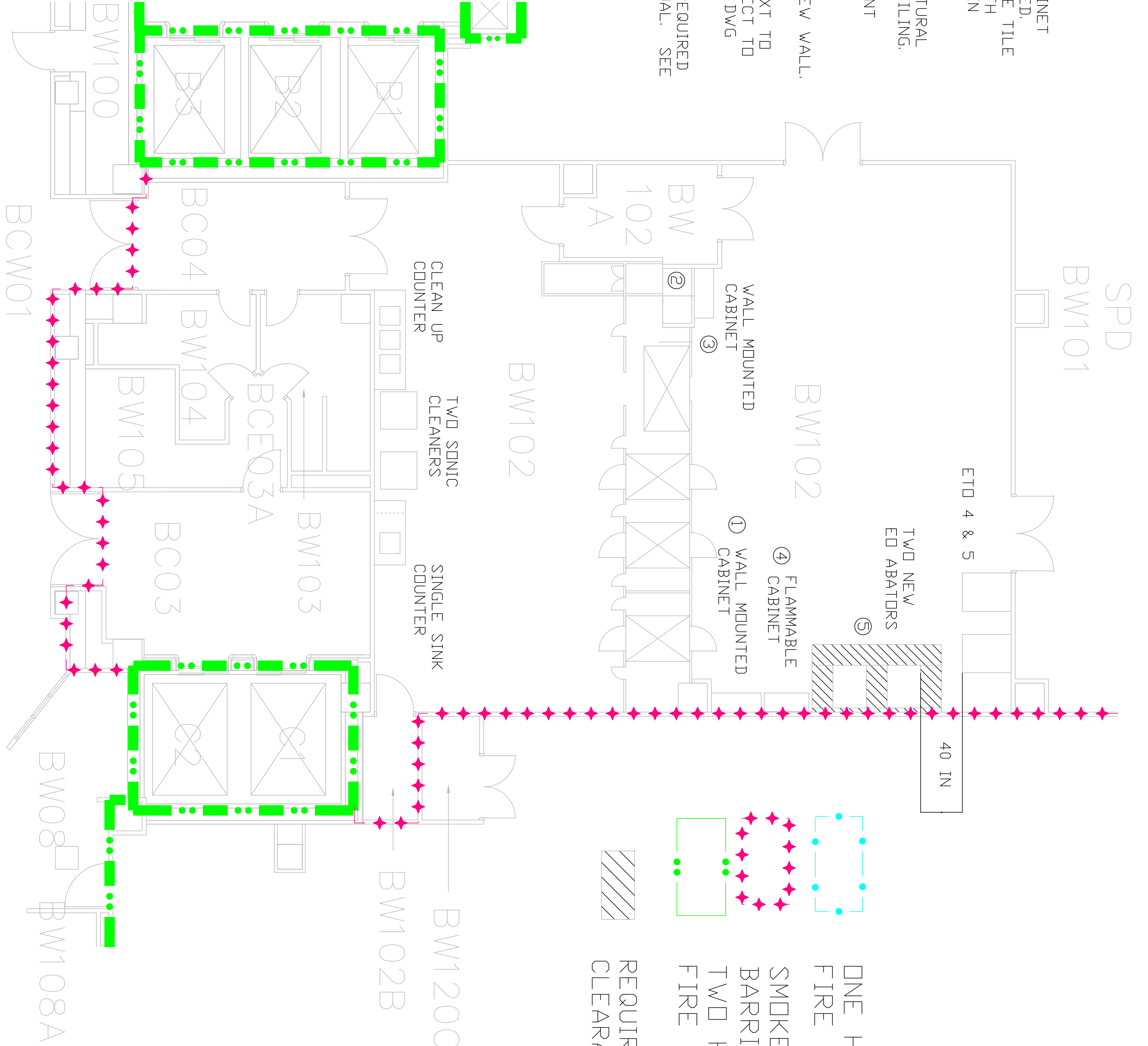


- 1 REMOVE ALL THREE SECTIONS OF CABINETS; RELOCATE ONE 48 IN CABINET AGAINST SAME WALL WHERE INDICATED PATCH WALL WITH CAULK. IF ENTIRE TILE SECTIONS ARE MISSING, CONSULT WITH PROJECT MANAGER. TURN OVER 24 IN CABINET TO VA.
- 2 INSTALL WALL USING 20 G STRUCTURAL STUD AND GREENBOARD TO ABOVE CEILING. BRACE TO BACK WALL. COVER WITH STAINLESS STEEL SHEET. USE SEALANT BETWEEN NEW WALL AND EXISTING EQUIPMENT (BW102A).
- 3 ATTACH ONE 48 IN CABINET TO NEW WALL.
- 4 RELOCATE FLAMMABLE CABINET NEXT TO RELOCATED 48 IN CABINET. RECONNECT TO VENT LINE; ENSURE GAS TIGHT. SEE DWG 1-H1.
- 5 INSTALL NEW ED ABATORS WITH REQUIRED CLEARANCES PER INSTALLATION MANUAL. SEE DWGS 1-H1, 1-H2, 1-E1.



EXISTING CONDITIONS

NEW EQUIPMENT LAYOUT