

three inches = one foot

one and one half inches = one foot

one inch = one foot

three quarters inch = one foot

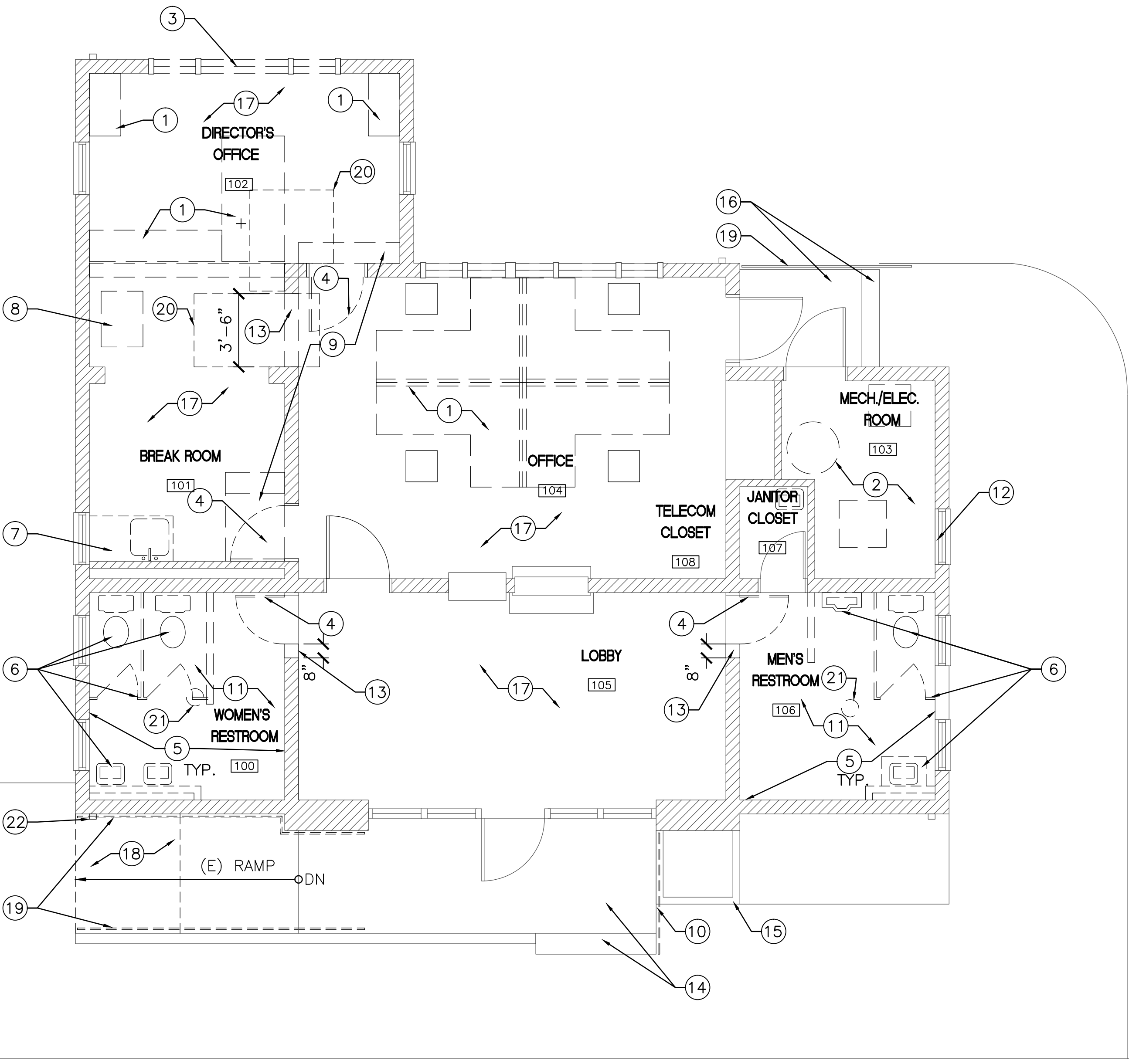
one half inch = one foot

three eighths inch = one foot

one quarter inch = one foot

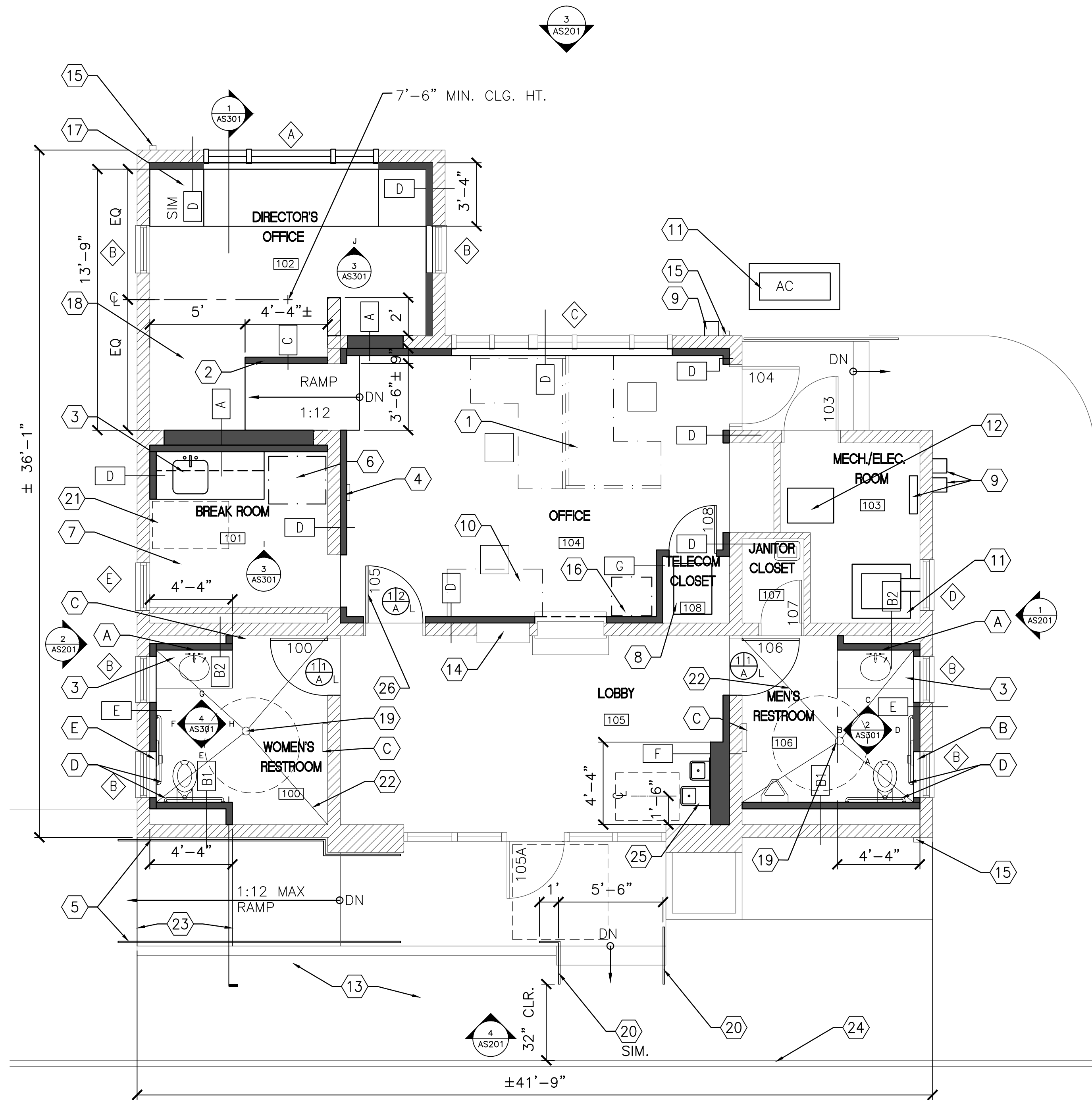
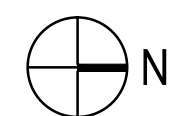
one eighth inch = one foot

PLAN 7/9/03/39 - VA Fort Rosecrans PIC 700 WORKING DOCUMENTS 740.04 SHEETS 740.04 ARCHITECTURAL AS101 - DEMOLITION PLAN AND FLOOR PLAN.dwg 7-30-15 09:00:23 AM lorense



2 DEMOLITION PLAN

0 2' 4' 8' 16'
SCALE: 1/4"=1'-0"



1 FLOOR PLAN

0 2' 4' 8' 16'
SCALE: 1/4"=1'-0"



GENERAL NOTE

- PATCH, REPAIR & PREP EXISTING CEILINGS, WALLS AND FLOOR SURFACES TO RECEIVE FINISHES PER FINISH SCHEDULE.
- DOORS TO RECIEVE SIGNAGE AT STRIKE EDGE OF DOOR, SEE 1/AE301 FOR LOCATION

HAZMAT NOTES

- REFER TO HAZARDOUS MATERIAL REPORT DATED MAY 21, 2015 BY RGA FOR HAZARDOUS MATERIALS AND ABATEMENT PROCEDURES.

RESTROOM ACCESSORIES SCHEDULE

SYM.	DESCRIPTION	ITEM #	REMARKS
A	MIRROR (ADA)	B-290	FULL WIDTH X 48" H
B	SEAT-COVER DISPENSER, AND TOILET TISSUE DISPENSER	B-3474	RECESSED
C	PAPER TOWEL DISPENSER AND WASTE RECEPTACLE	B-3949	SURFACE-MOUNTED
D	DIA. S.S. GRAB BAR	B-6806	SEE AE-301
E	SEAT-COVER DISPENSER, SANITARY NAPKIN DISPOSAL, AND TOILET TISSUE DISPENSER	B-3574	RECESSED

NOTE: ALL ACCESSORIES ARE NOTED FROM THE BOBRICK CATALOG

FLOOR PLAN KEY NOTES

- WORKSTATIONS (NIC)
- 42" HIGH WALL METAL STUD WALL, SEE STRCUTURAL
- ACCESSIBLE SINK WITH SOLID SURFACE COUNTERTOP. BASE CABINET AT BREAK ROOM.
- PARTIALLY RECESSED FIRE EXTINGUISHER CABINET
- HANDRAIL AT RAMP
- REFRIGERATOR (NIC)
- RAISED FLOOR TO ALIGN WITH ROOM 104 FLOOR - SEE STRUCTURAL
- RELOCATED TELECOM RACK - SEE ELECTRICAL
- ELECTRICAL EQUIPMENT - SEE ELECTRICAL
- WORK TABLE (NIC)
- MECHANICAL EQUIPMENT - SEE MECHANICAL & STRUCTURAL
- TRANSFORMER - SEE ELECTRICAL
- (E) CONCRETE PAVING
- (E) GRAVE SITE LOCATOR
- (E) ROOF DOWNSPOUT
- COPIER (NIC)
- BUILT-IN DESK AND SHELVING AT DIRECTOR'S OFFICE
- RAISED FLOOR - SEE STRUCTURAL
- FLOOR DRAIN - SEE PLUMBING
- HANDRAIL AT STAIR
- CLEARANCE 30" X 48" COMPLIES WITH ABA 305 PARALLEL APPROACH
- SLOPE TO DRAIN 1% MIN - 2% MAX.
- ADD PORTION OF CONCRETE RAMP, SEE CIVIL
- (E) CONCRETE CURB/SIDEWALK TO REMAIN
- DRINKING FOUNTAIN
- 24" X 24" LOUVER IN (E) DOOR

DEMOLITION PLAN KEY NOTES

- DISASSEMBLE, SALVAGE AND PROTECT (E) WORKSTATIONS AND ALL ASSOCIATED HARDWARE AND TURN OVER TO CEMETERY
- REMOVE (E) WATER HEATER, FORCED AIR UNIT WITH CONCRETE EQUIPMENT PAD, ELECTRICAL PANELS, AND TRANSFORMER. (SEE MECHANICAL, PLUMBING, AND ELECTRICAL)
- REMOVE (E) WINDOW
- REMOVE (E) DOOR AND FRAME
- REMOVE (E) WALL TILE
- REMOVE (E) PLUMBING FIXTURES, TOILET PARTITIONS, AND TOILET ACCESSORIES
- REMOVE (E) CASEWORK
- RELOCATE (E) TELECOM RACK - SEE ELECTRICAL
- REMOVE (E) STAIRS AND RAILING
- REMOVE (E) RAIL
- REMOVE (E) FLOORING
- (E) LOUVER BELOW WINDOW TO REMAIN
- DEMO WALL
- (E) CONCRETE RAMP, STAIRS, AND LANDING TO REMAIN
- (E) CONCRETE CURBS TO REMAIN
- (E) CONCRETE STAIRS AND LANDING TO REMAIN
- REMOVE (E) FLOORING, SETTING BASE AND WALL BASE
- REMOVE PORTION OF (E) CONCRETE RAMP, SEE CIVIL
- REMOVE (E) HANDRAIL
- REMOVE (E) CONCRETE SLAB, SEE STRUCTURAL
- REMOVE (E) FLOOR DRAIN, SEE PLUMBING
- REMOVE (E) DOWNSPOUT

LEGEND

- (E) CMU WALL
- (E) CMU WALL DEMOLITION
- CMU WALL
- INTERIOR STUD WALL

CONSULTANTS:

ENVIRONMENTAL
PAR ENVIRONMENTAL
SERVICES, INC.
1906 21ST STREET
SACRAMENTO, CA 95811
(916) 739-8356
MLMANIERI@YAHOO.COM
JGMANIERI@YAHOO.COM

HAZMAT
RGA ENVIRONMENTAL
2817 McGAW AVENUE
IRVINE, CA 92614
(949) 864-2025
DAVID.SILVERI@TERRACON.COM



ARCHITECT/ENGINEERS:

JACOBS
Jacobs Engineering Group Inc.
Consultants in Architecture, Engineering,
Planning, and the Environment
Irvine Office
3161 Michelson Drive, Suite 500
Irvine, California 92612
(949) 224-7500 Fax (949) 224-7501

Drawing Title

DEMOLITION PLAN AND FLOOR PLAN

Approved Project Director

-
-
-

Project Title
FORT ROSECRANS NATIONAL CEMETERY
PUBLIC INFORMATION CENTER

Location
FORT ROSECRANS NATIONAL CEMETERY
CABRILLO MEMORIAL DR, SAN DIEGO, CA 92108

Date
08/04/2015

Checked
DF

Drawn
EN

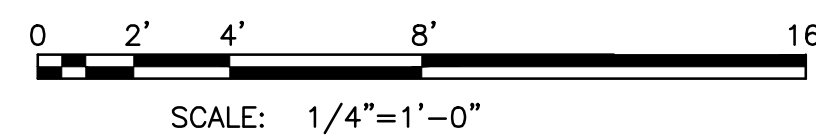
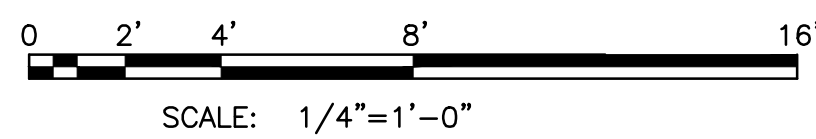
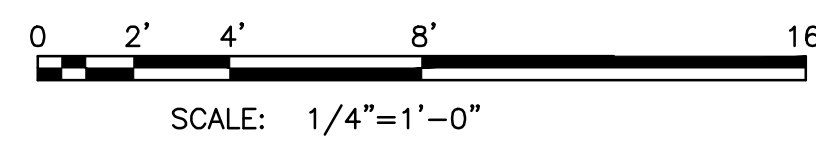
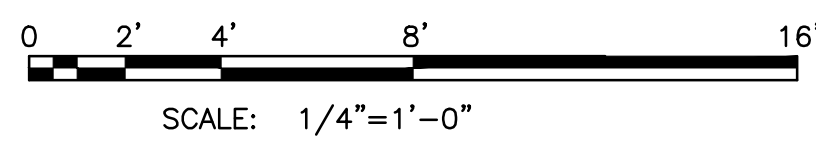
Project Number
892-CM3-034

Building Number
1001

Drawing Number
AS101
Dwg 7 of 35

NATIONAL CEMETERY
ADMINISTRATION
DESIGN AND
CONSTRUCTION
SERVICE



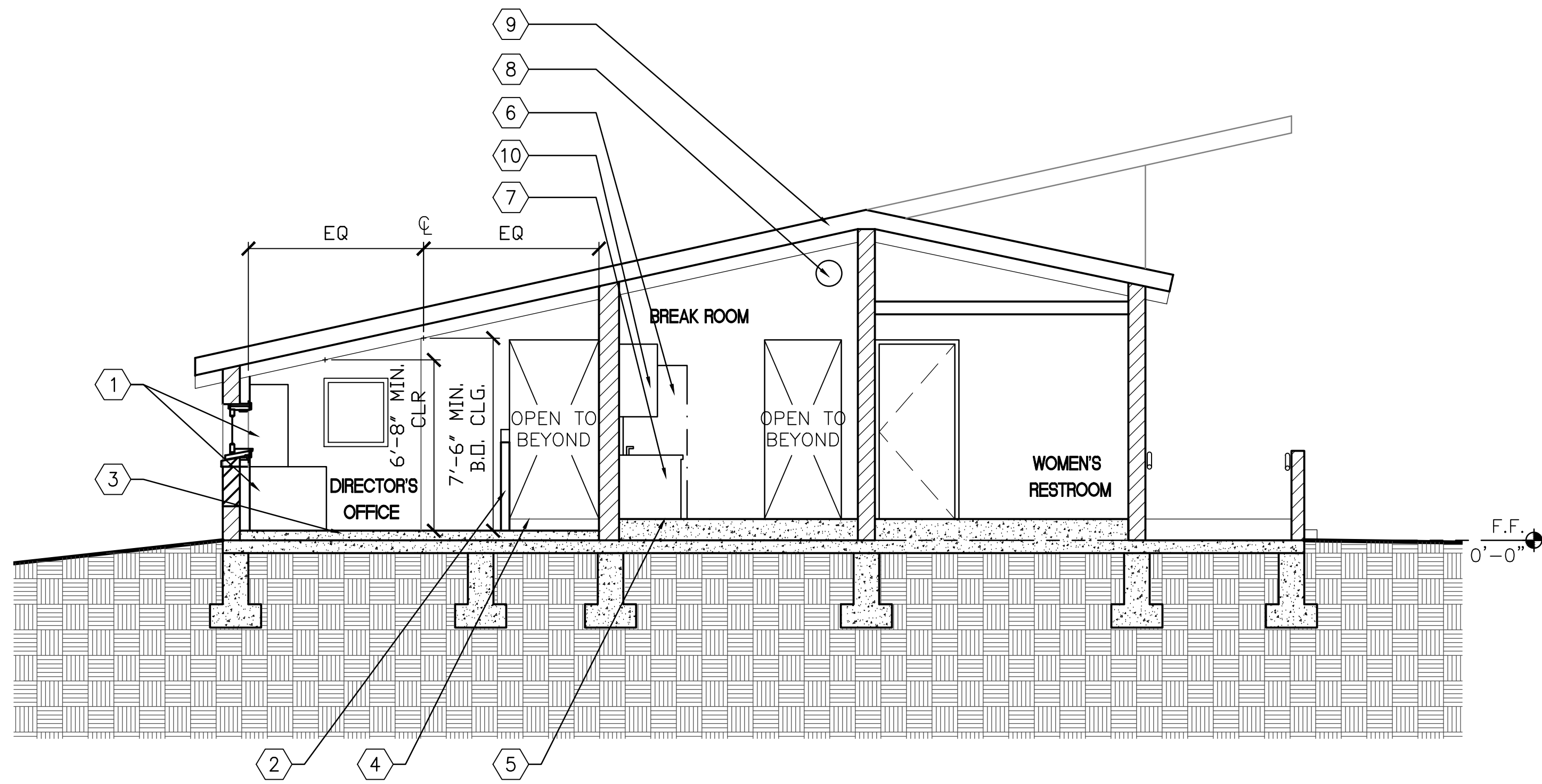
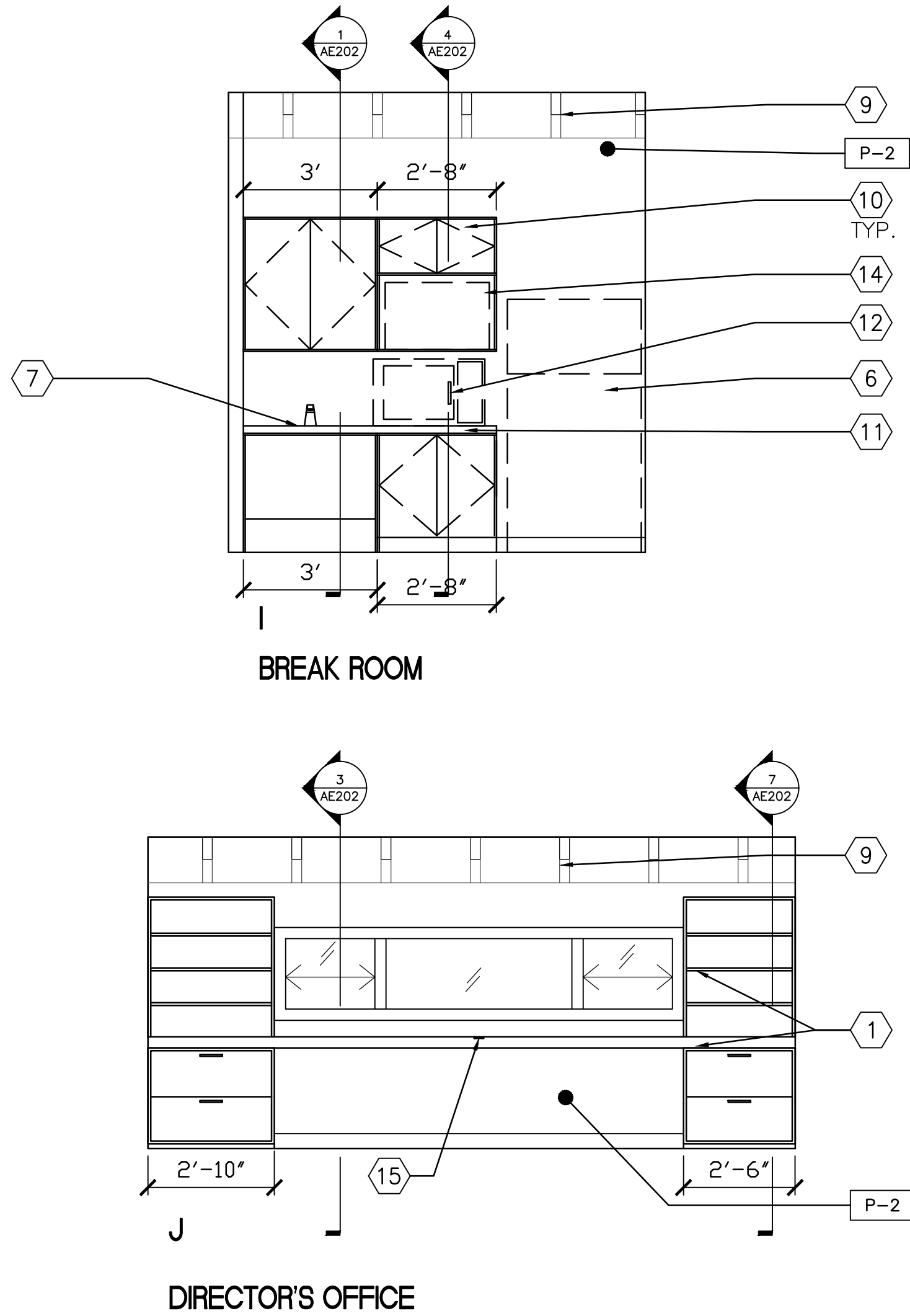


1. REFER TO HAZARDOUS MATERIAL REPORT DATED MAY 21, 2015 BY RGA FOR HAZARDOUS MATERIALS AND ABATEMENT PROCEDURES.



Department of
Veterans Affairs

three inches = one foot
one and one half inches = one foot
one inch = one foot
three quarters inch = one foot
one half inch = one foot
three eighths inch = one foot
one quarter inch = one foot
one eighth inch = one foot
one sixteenth inch = one foot
P:\7\90739 - VA For Rosecrans PIC\700 WORKING DOCUMENTS\740-SHEETS\740.04-ARCHITECTURAL\AS301-BUILDING SECTION AND INTERIOR ELEVATIONS.dwg 7-30-15 09:00:45 AM



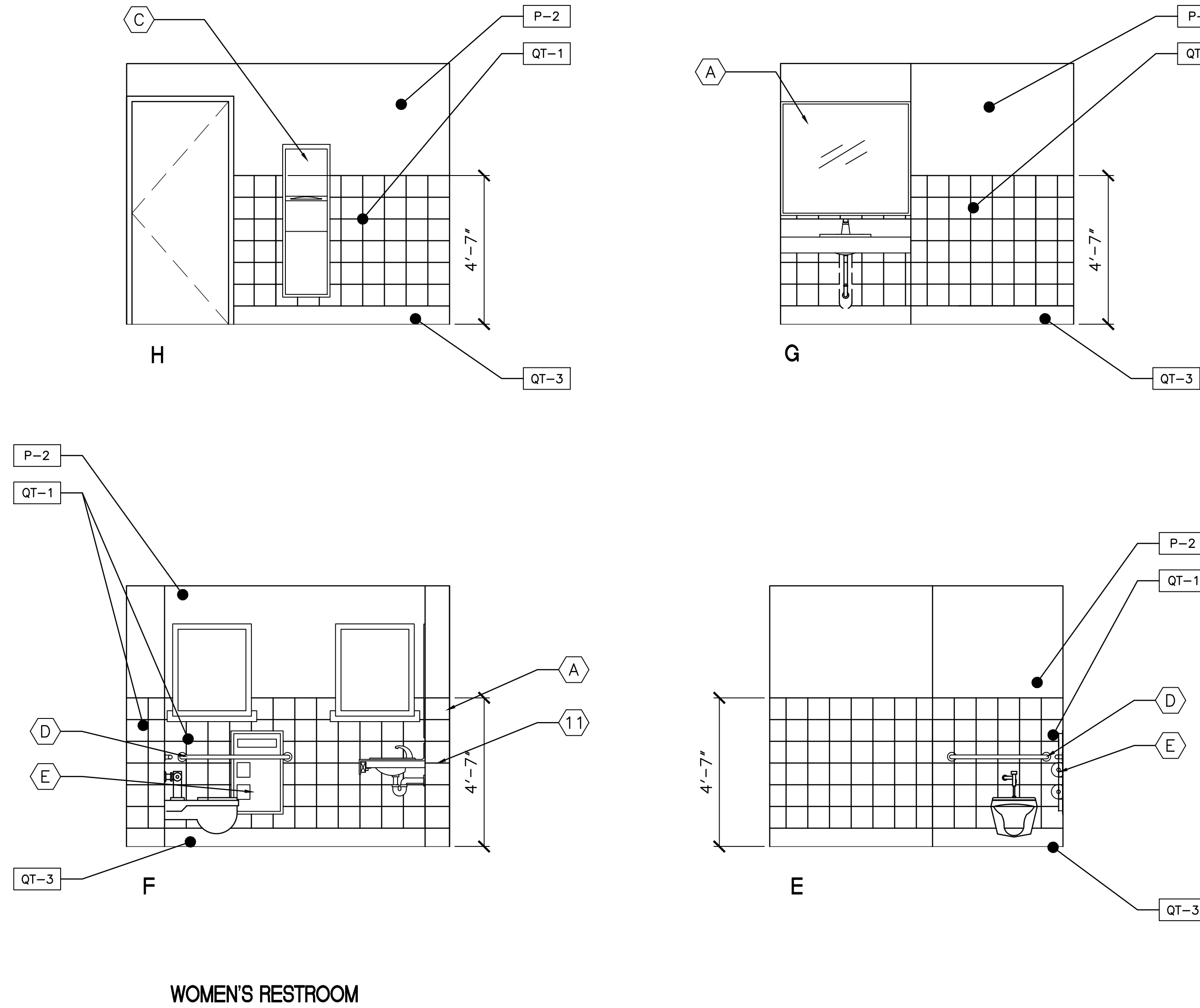
- SECTION KEY NOTES**
- 1 PLASTIC LAMINATE [PL-1] BUILT-IN DESK AND SHELVING
 - 2 42" HIGH METAL STUD WALL
 - 3 4½"± CONCRETE TOPPING SLAB, SEE STRUCTURAL
 - 4 RAMP, SEE STRUCTURAL
 - 5 PROVIDE 10½"± CONCRETE TOPPING SLAB TO MATCH EXISTING OFFICE 104 FLOOR LEVEL, SEE STRUCTURAL
 - 6 REFRIGERATOR (NIC)
 - 7 ACCESSIBLE SINK WITH SOLID SURFACE [SS-1] COUNTERTOP AND PLASTIC LAMINATE [PL-1] CASEWORK
 - 8 EXPOSED DUCTWORK - SEE MECHANICAL
 - 9 (E) ROOF FRAMING
 - 10 PLASTIC LAMINATE [PL-1] FACED CABINET
 - 11 SOLID SURFACE [SS-1] COUNTERTOP
 - 12 MICROWAVE (NIC), INSTALL OUTLET FOR POWER, SEE ELECTRICAL
 - 13 (E) LOUVER TO REMAIN
 - 14 ALTERNATE LOCATION FOR MICROWAVE (NIC), INSTALL OUTLET ON THE SIDE OF MICROWAVE FOR POWER, SEE ELECTRICAL
 - 15 METAL DESK WIRE MANAGEMENT GROMMET CENTERED ON DESK

3 INTERIOR ELEVATION

SCALE: 3/8"=1'-0"

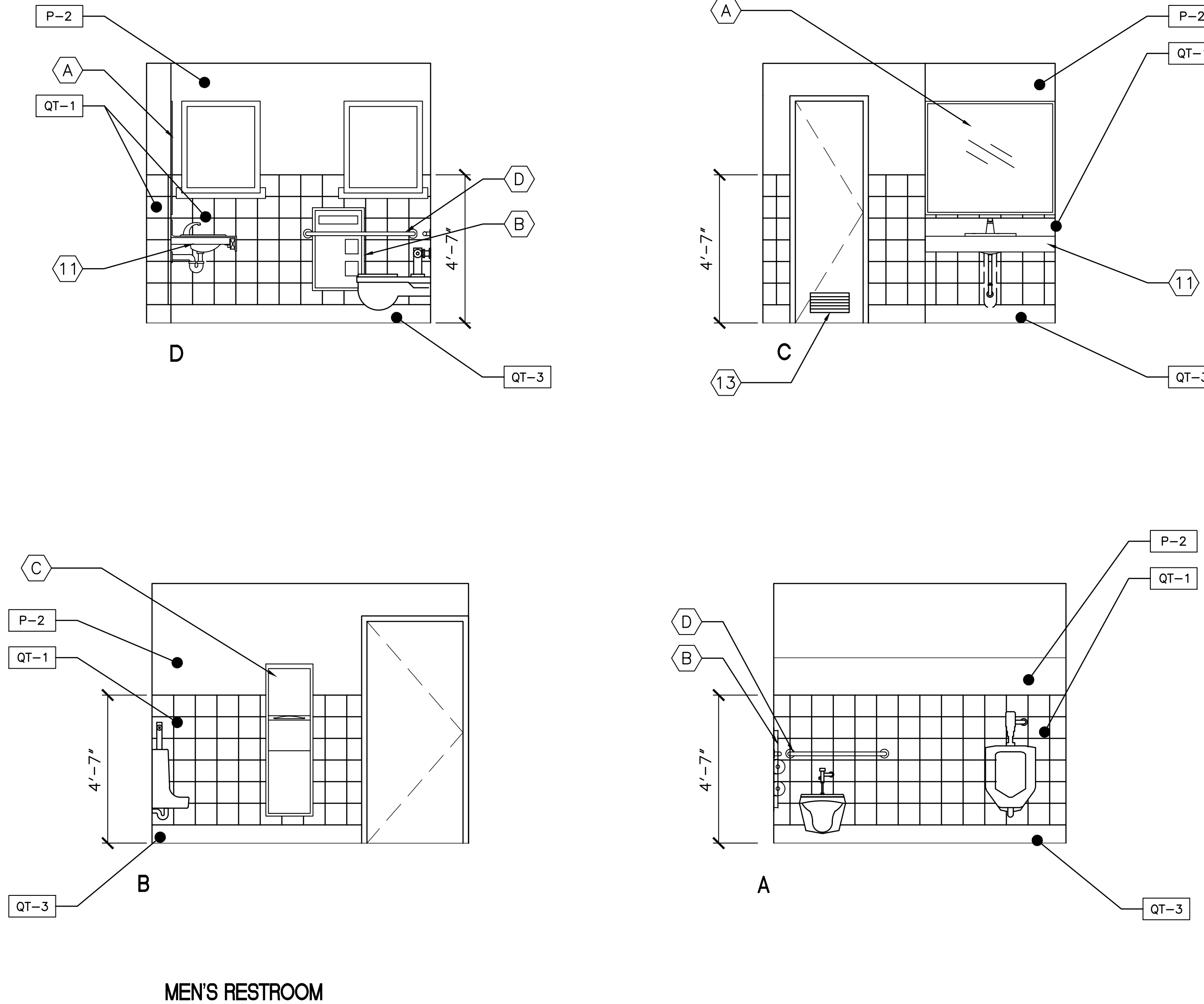
1 SECTION

SCALE: 1/4"=1'-0"



4 INTERIOR ELEVATION - WOMEN'S RESTROOM

SCALE: 3/8"=1'-0"



2 INTERIOR ELEVATION - MEN'S RESTROOM

SCALE: 3/8"=1'-0"

RESTROOM ACCESSORIES SCHEDULE

SYM.	DESCRIPTION	ITEM #	REMARKS
A	MIRROR (ADA)	B-290	FULL WIDTH x 48" H
B	SEAT-COVER DISPENSER, AND TOILET TISSUE DISPENSER	B-3474	RECESSED
C	PAPER TOWEL DISPENSER AND WASTE RECEPTACLE	B-3949	SURFACE-MOUNTED
D	DIA. S.S. GRAB BAR	B-6806	
E	SEAT-COVER DISPENSER, SANITARY NAPKIN DISPOSAL, AND TOILET TISSUE DISPENSER	B-3574	RECESSED

GENERAL NOTE:

1. SEE PLUMBING FOR ACCESS PANELS
2. REFER TO FLOOR FINISH SCHEDULE ON AF101 FOR FINISHES
3. REFER TO AE301 FOR ACCESSIBILITY STANDARDS

CONSULTANTS:

ENVIRONMENTAL
PAR ENVIRONMENTAL
SERVICES, INC.
1906 21ST STREET
SACRAMENTO, CA 95811
(916) 739-8356
MLMANIERY@YAHOO.COM
JGMANIERY@YAHOO.COM

HAZMAT
RGA ENVIRONMENTAL
2817 McGAW AVENUE
IRVINE, CA 92614
(949) 864-2025
DAVID.SILVER@TERRACON.COM



ARCHITECT/ENGINEERS:

JACOBS
Jacobs Engineering Group Inc.
Consultants in Architecture, Engineering,
Planning, and the Environment
Irvine Office
3161 Michelson Drive, Suite 500
Irvine, California 92612
(949) 224-7500 Fax (949) 224-7501

Drawing Title
BUILDING SECTION
AND INTERIOR ELEVATION

Approved Project Director

Project Title
FORT ROSECRANS NATIONAL CEMETERY
PUBLIC INFORMATION CENTER

Location
FORT ROSECRANS NATIONAL CEMETERY
CABRILLO MEMORIAL DR, SAN DIEGO, CA 92106

Date
08/04/2015

Checked
DF

Drawn
EN

Project Number
892-CM3-034

Building Number
1001

Drawing Number
AS301

Dwg 9 of 35

NATIONAL CEMETERY
ADMINISTRATION
DESIGN AND
CONSTRUCTION
SERVICE





Department of
Veterans Affairs



HAZMAT
RGA ENVIRONMENTAL
2817 McGAU AVENUE
IRVINE, CA 92614
(949)864-2025
DAVID.SILVERI@TERRACON.COM



Approved: Project Director

 Department of
Veterans Affairs



A

B

C

D

E

F

A

B

C

D

E

F

three inches = one foot

one and one half inches = one foot

one inch = one foot

three quarters inch = one foot

one half inch = one foot

three eighths inch = one foot

one quarter inch = one foot

one eighth inch = one foot

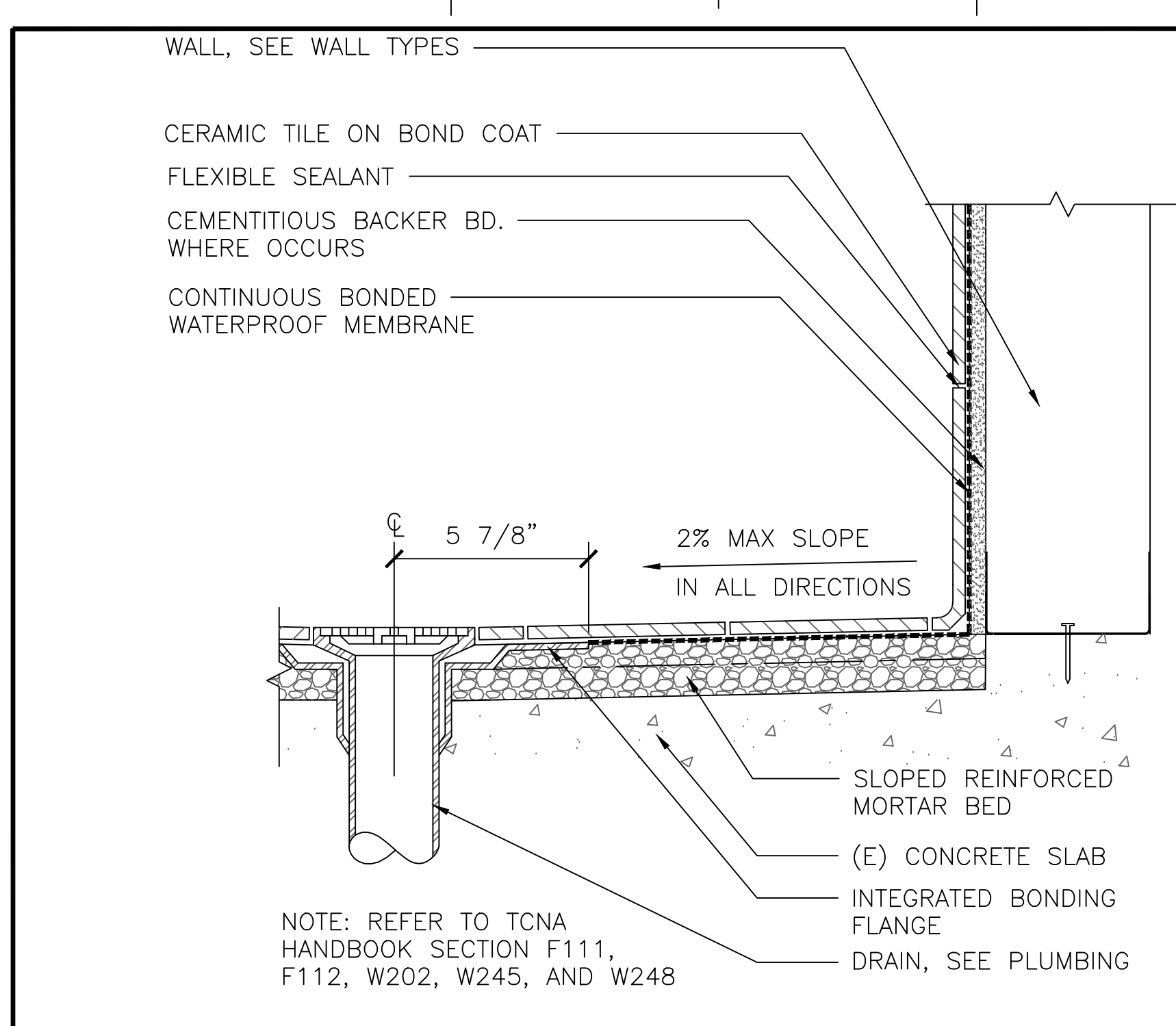
one sixteenth inch = one foot

one thirty second inch = one foot

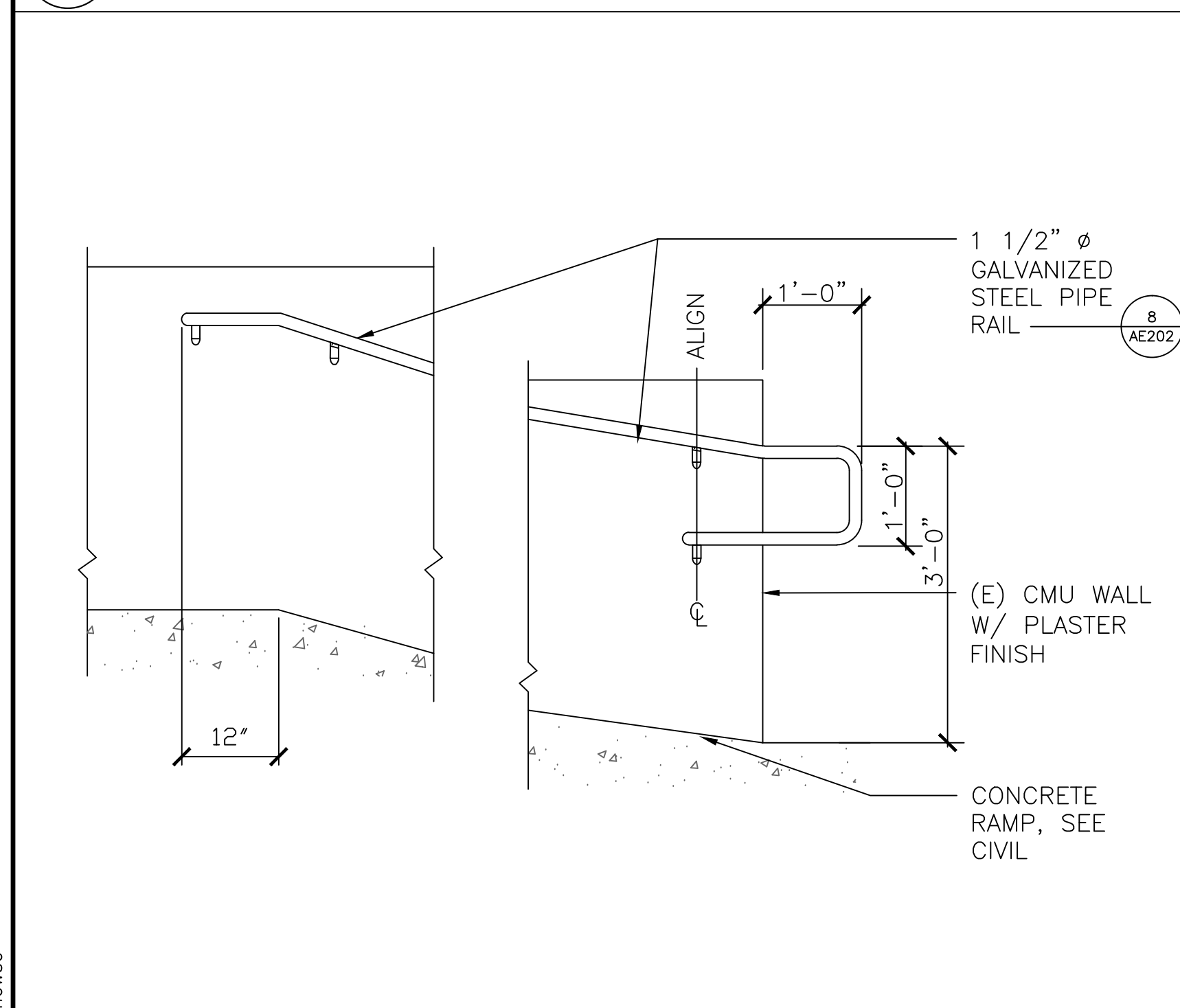
one sixty fourth inch = one foot

one one hundred eighth inch = one foot

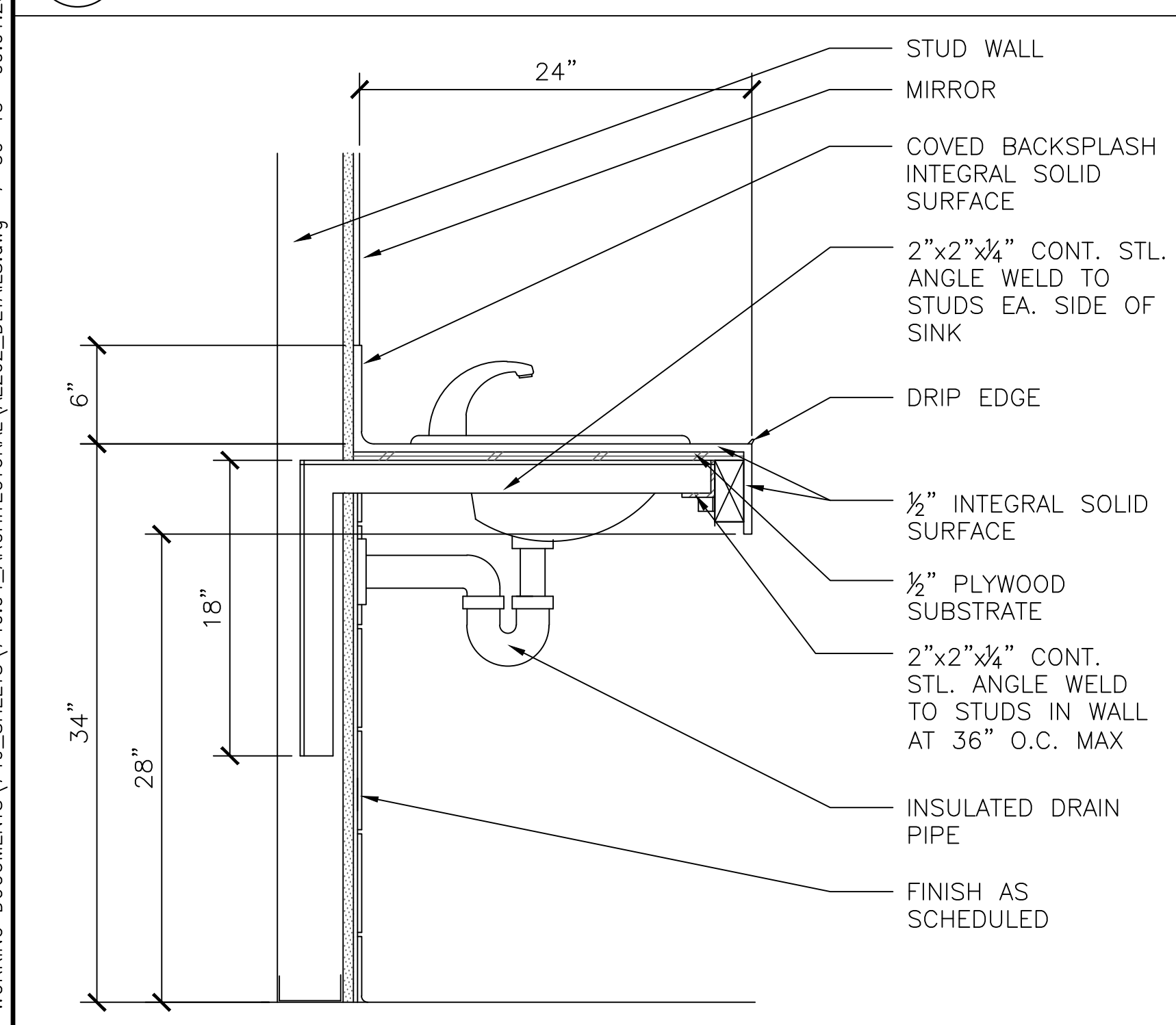
one two hundred sixteenth inch = one foot



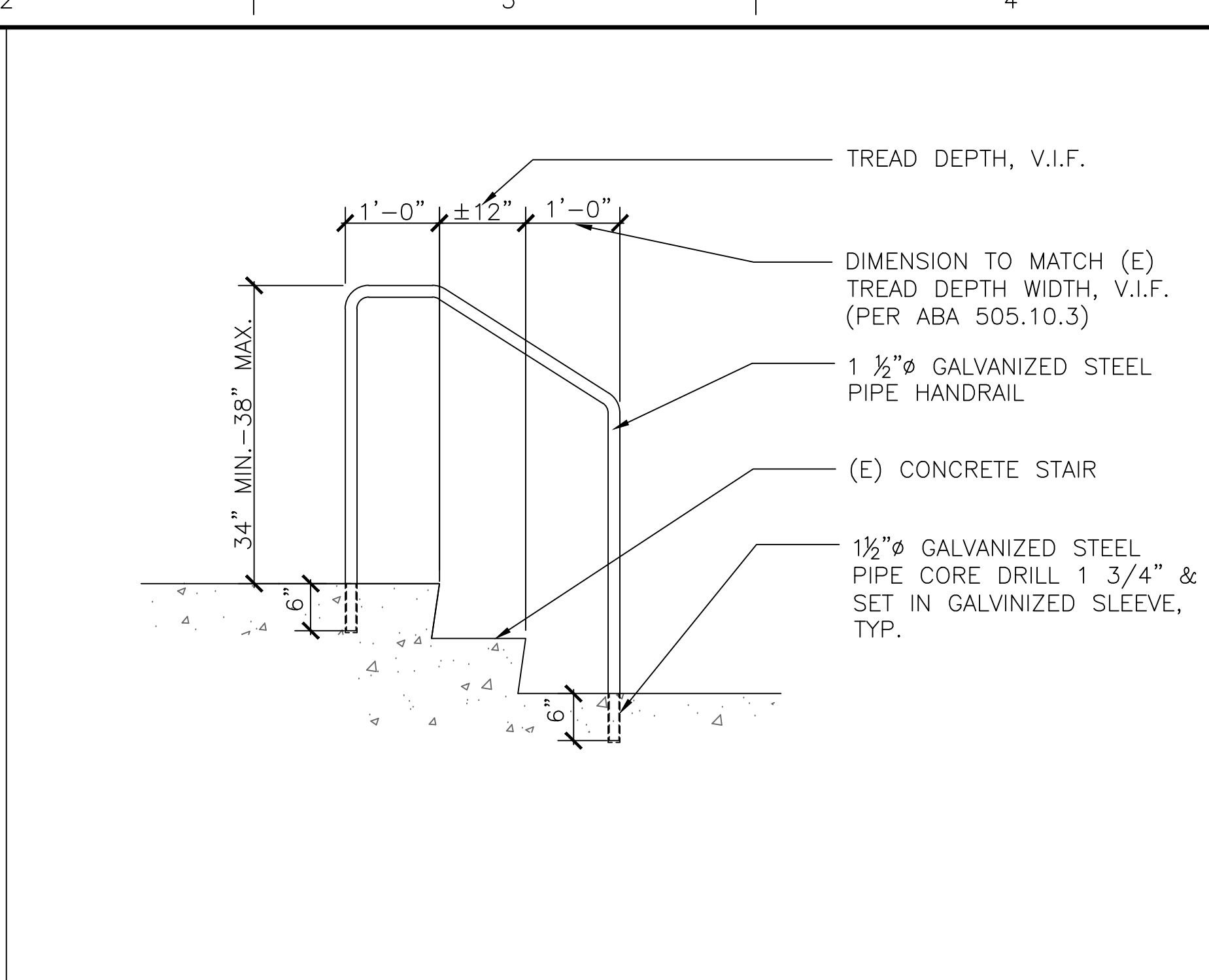
12 TYPICAL FLOOR DRAIN
SCALE 3"=1'-0"



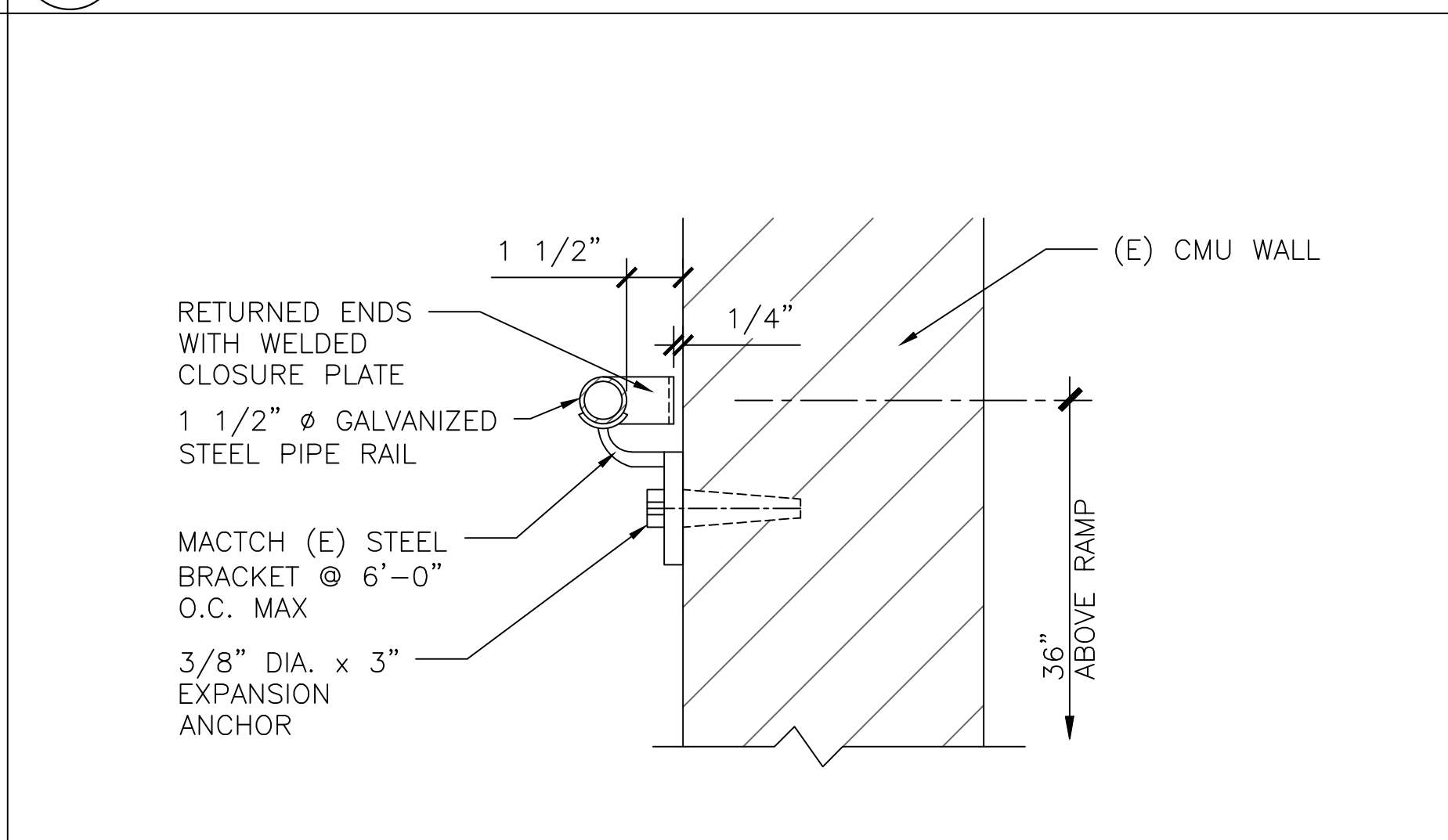
11 HANDRAIL AT RAMP
SCALE 3/4"=1'-0"



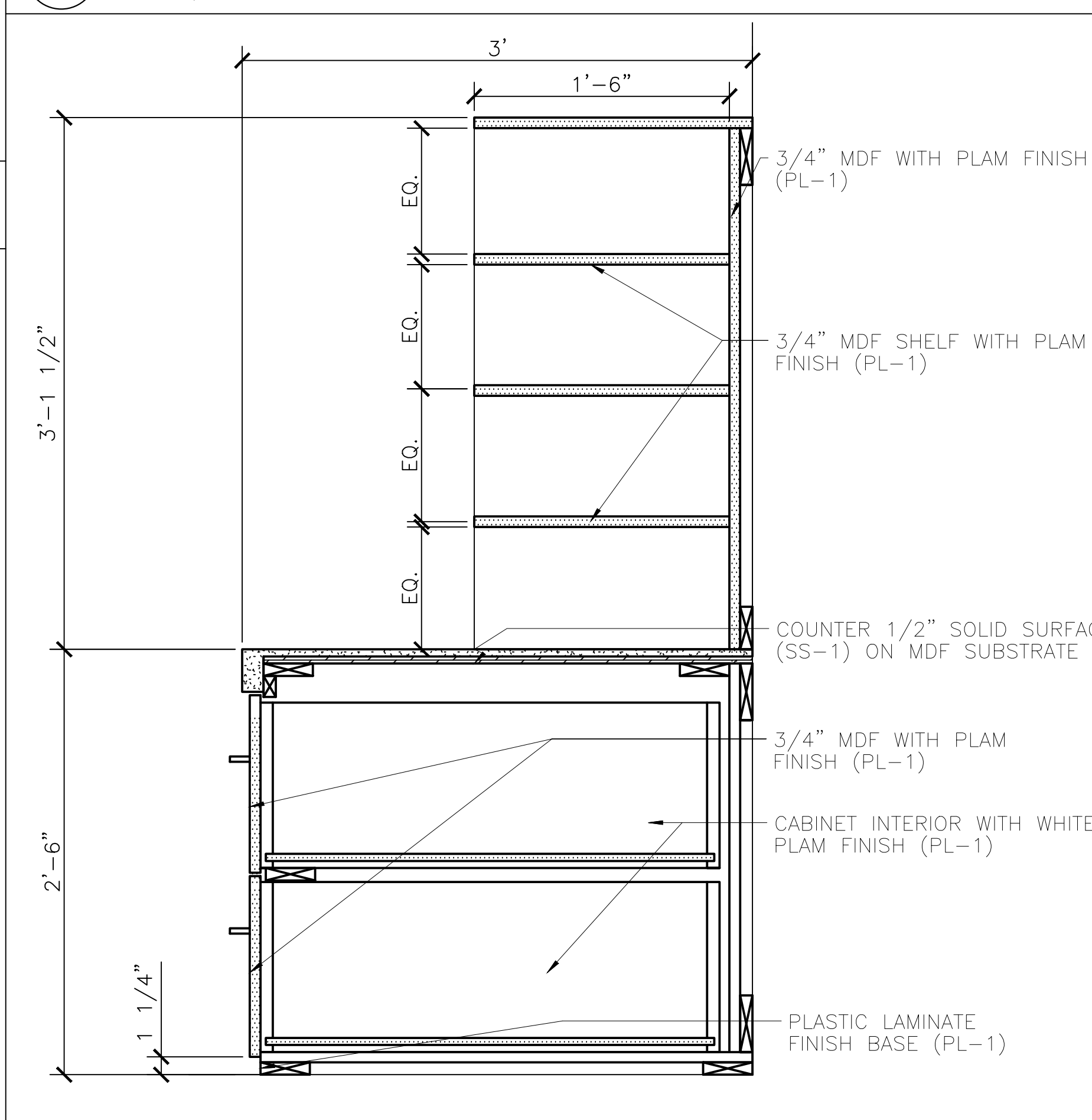
10 SINK CABINET
SCALE 1 1/2"=1'-0"



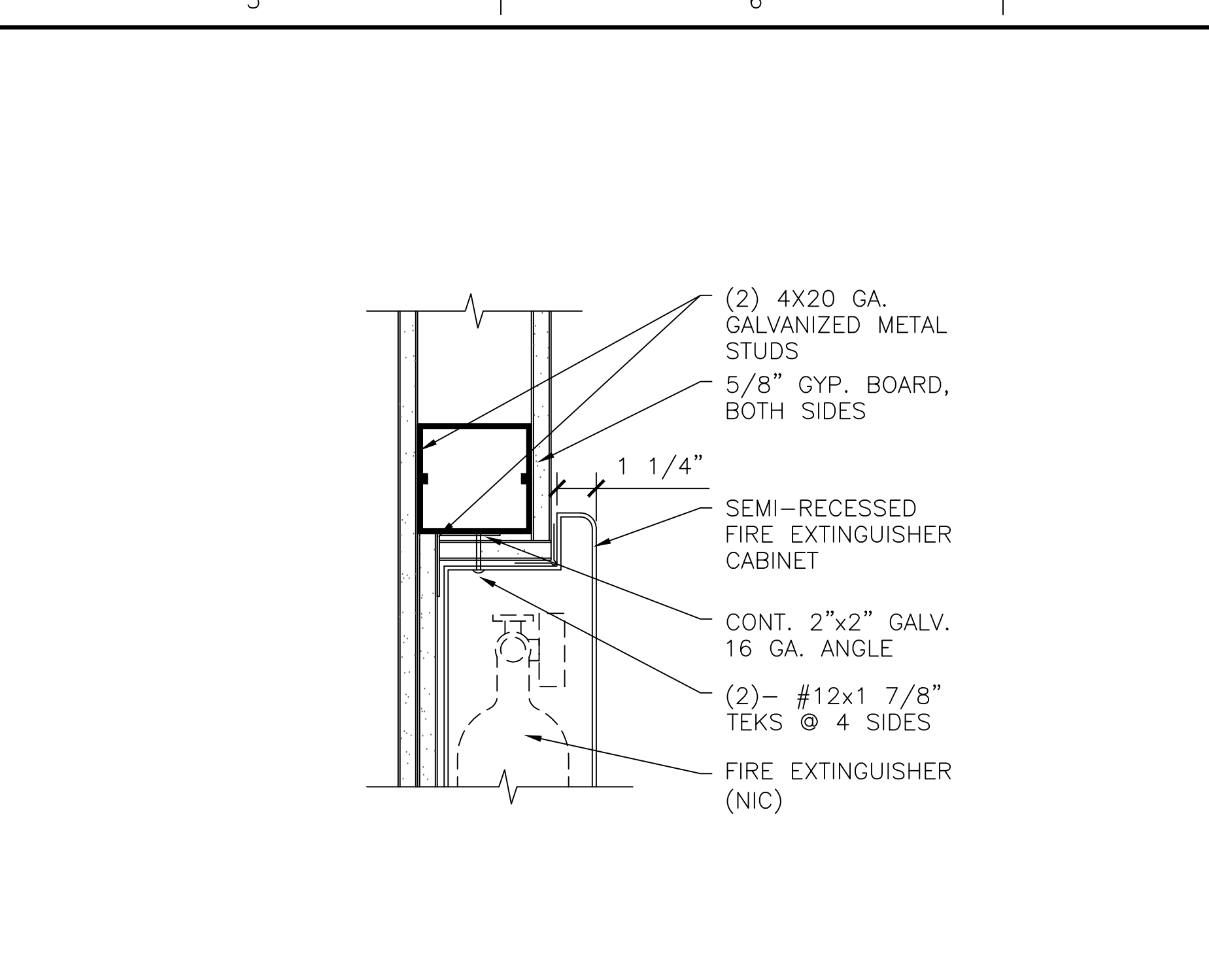
9 HANDRAIL AT STAIR
SCALE 3/4"=1'-0"



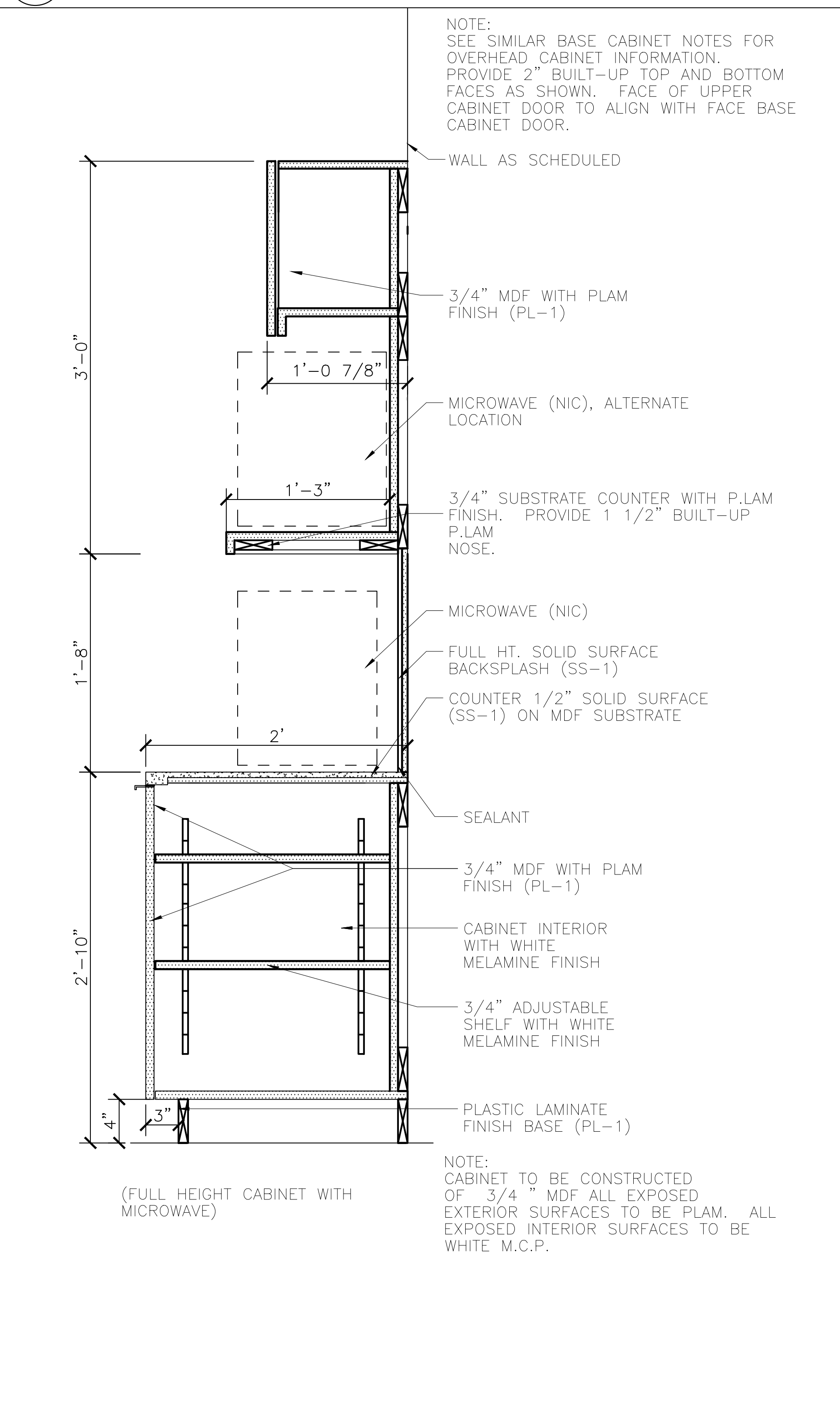
8 HANDRAIL AT RAMP
SCALE 3/4"=1'-0"



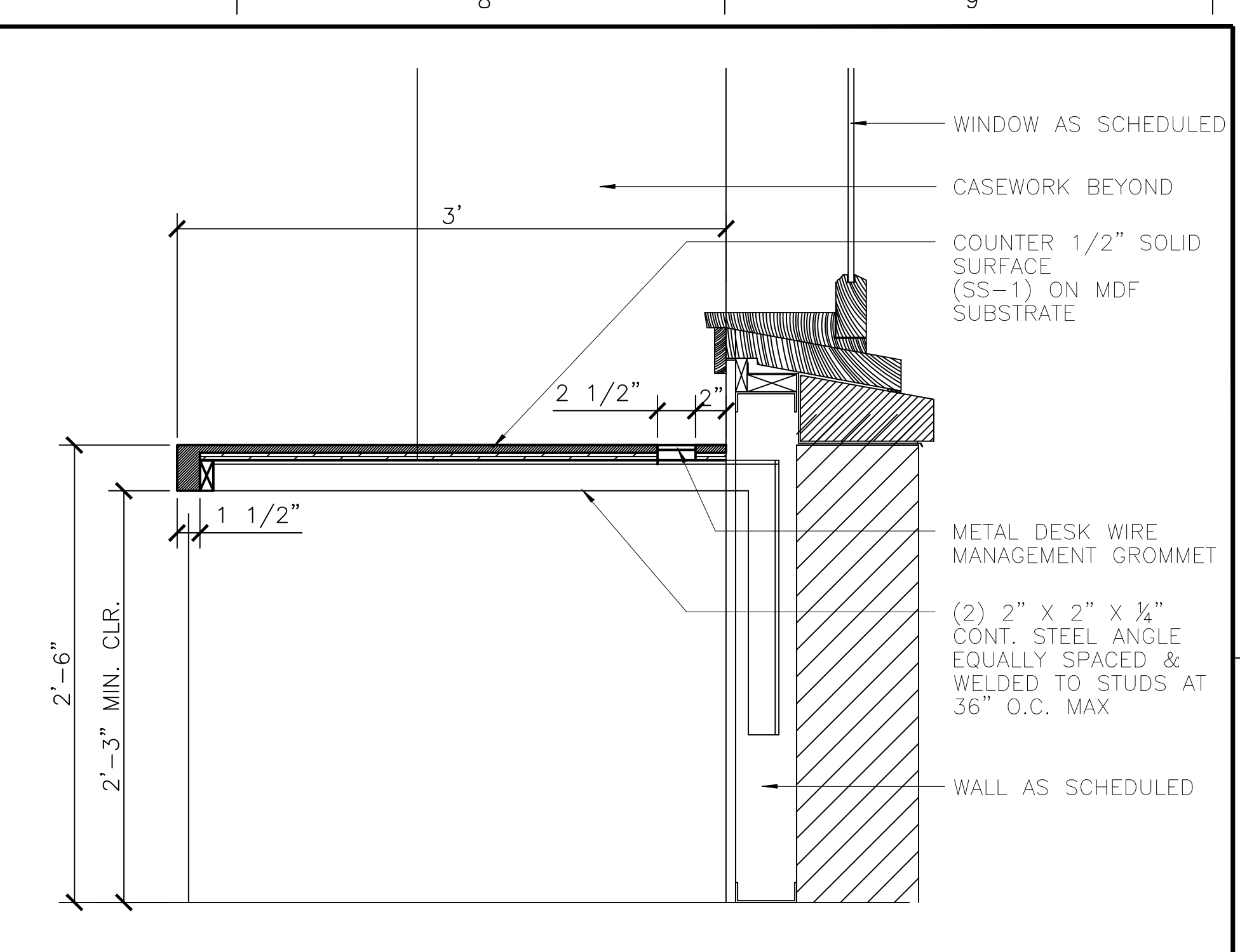
7 CASEWORK
SCALE 1 1/2"=1'-0"



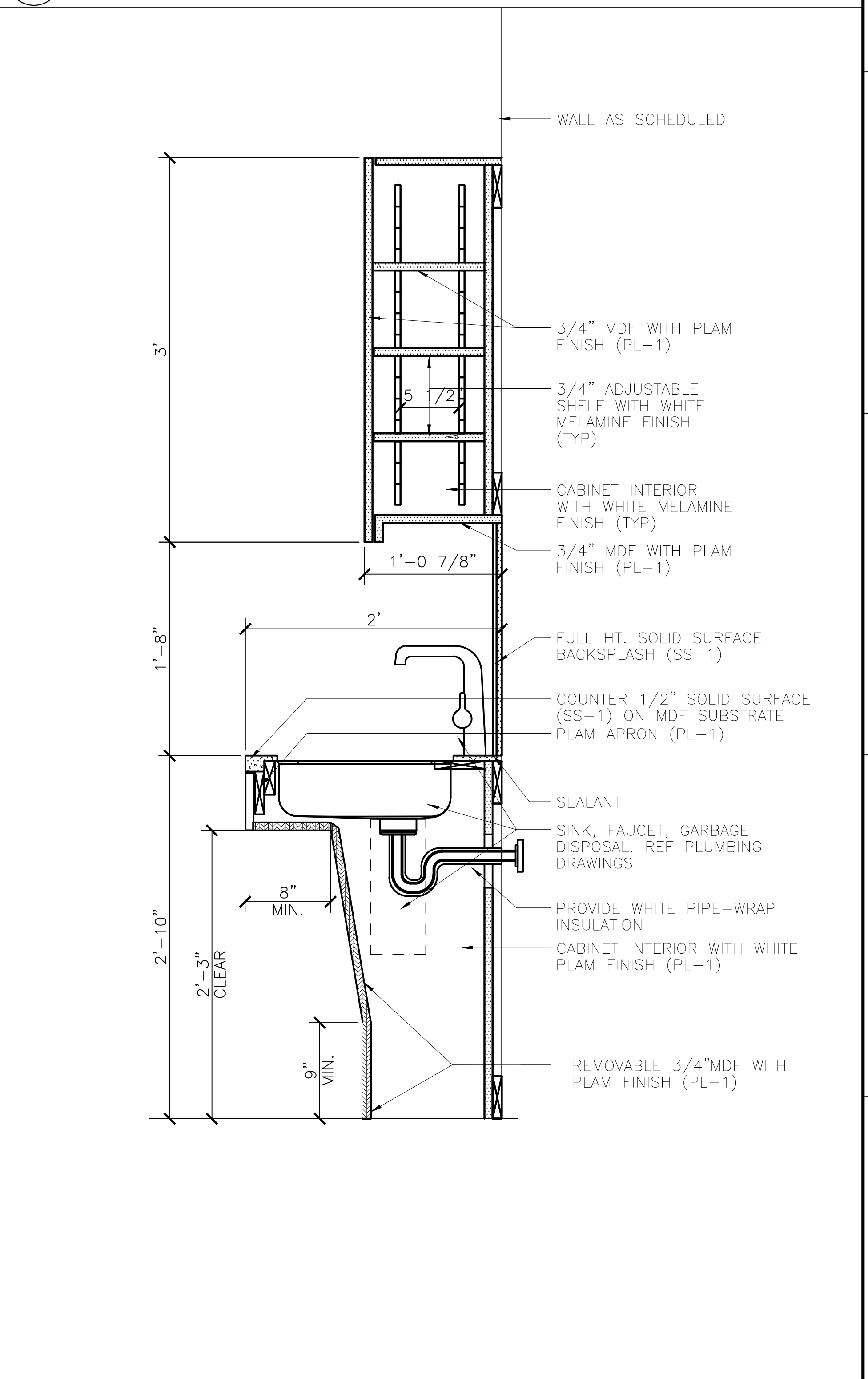
6 FIRE EXTINGUISHER CABINET
SCALE 3"=1'-0"



4 CASEWORK
SCALE 1 1/2"=1'-0"



3 CASEWORK
SCALE 3"=1'-0"



1 CASEWORK
SCALE 1 1/2"=1'-0"

CONSULTANTS:

ENVIRONMENTAL
PAR ENVIRONMENTAL
SERVICES, INC.
1906 21ST STREET
SACRAMENTO, CA 95811
(916) 739-8356
MLMANIERI@YAHOO.COM
JGMANIERI@YAHOO.COM

HAZMAT
RGA ENVIRONMENTAL
2817 McGAW AVENUE
IRVINE, CA 92614
(949) 864-2025
DAVID.SILVER@TERRACON.COM



ARCHITECT/ENGINEERS:

JACOBS
Jacobs Engineering Group Inc.
Consultants in Architecture, Engineering,
Planning, and the Environment
Irvine Office
3161 Michelson Drive, Suite 500
Irvine, California 92612
(949) 224-7500 Fax (949) 224-7501

Drawing Title

DETAILS
-
-
Approved Project Director
-
-
Date
08/04/2015
Checked
DF
Drawn
EN

Project Title

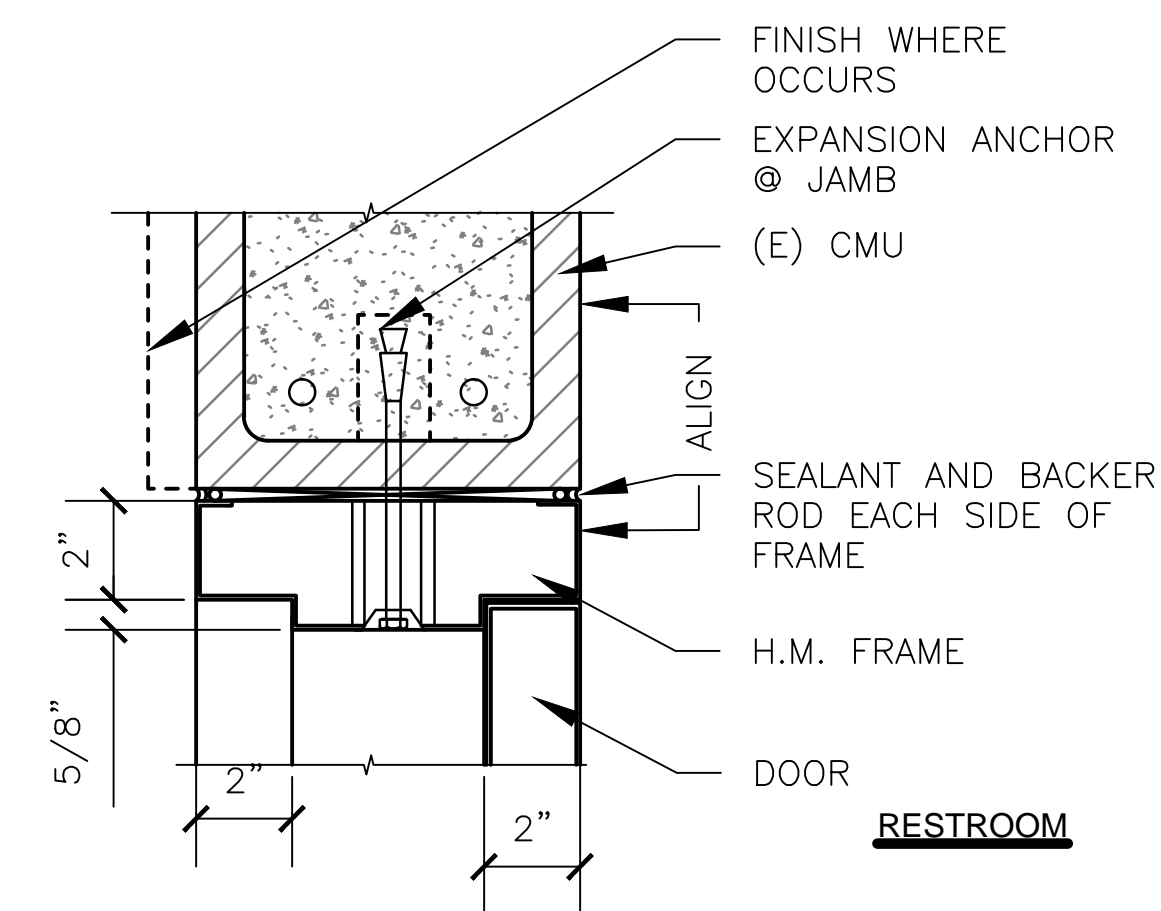
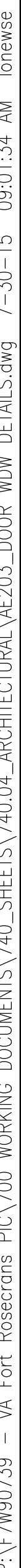
FORT ROSECRANS NATIONAL CEMETERY
PUBLIC INFORMATION CENTER
Location FORT ROSECRANS NATIONAL CEMETERY
CABRILLO MEMORIAL DR, SAN DIEGO, CA 92106
Date 08/04/2015
Checked DF
Drawn EN

Project Number

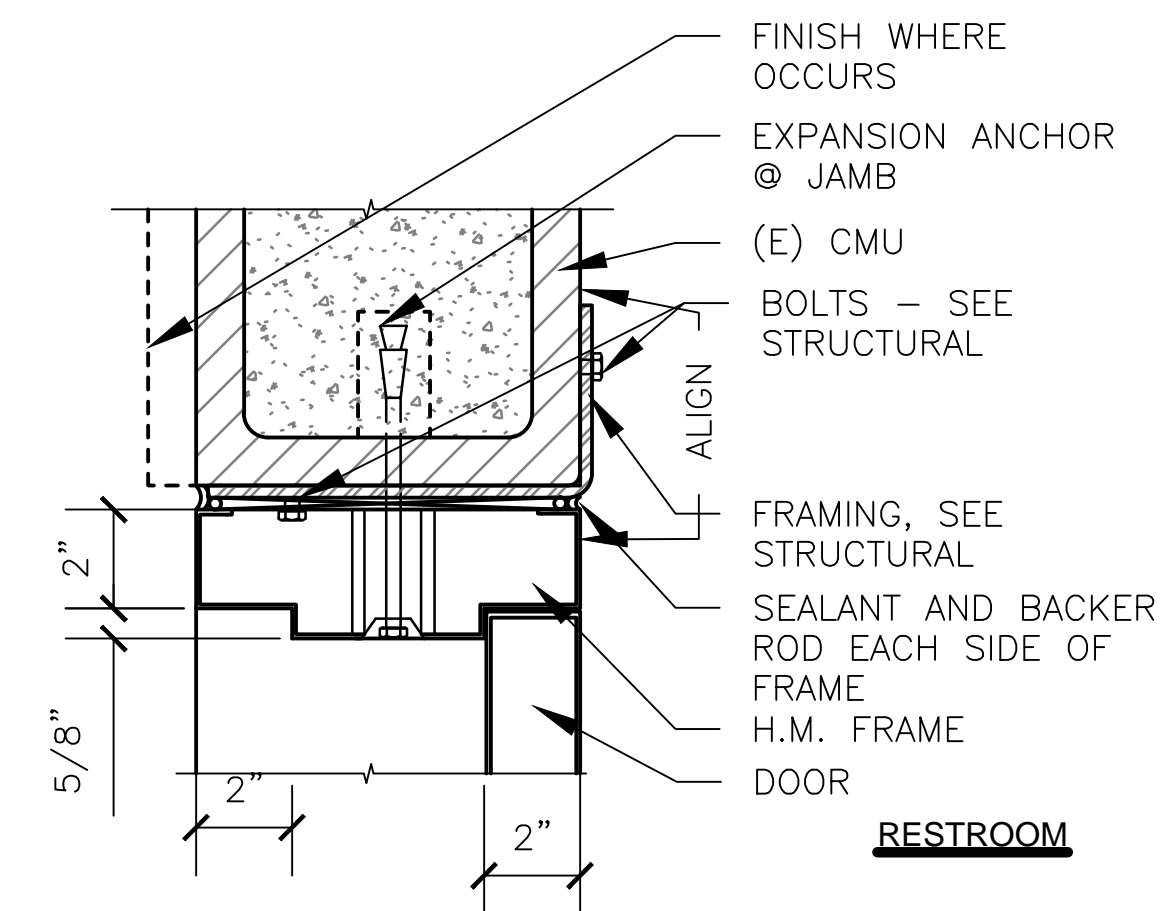
892-CM3-034
Building Number
1001
Drawing Number
AE202
Dwg 13 of 35

NATIONAL CEMETERY
ADMINISTRATION
DESIGN AND
CONSTRUCTION
SERVICE

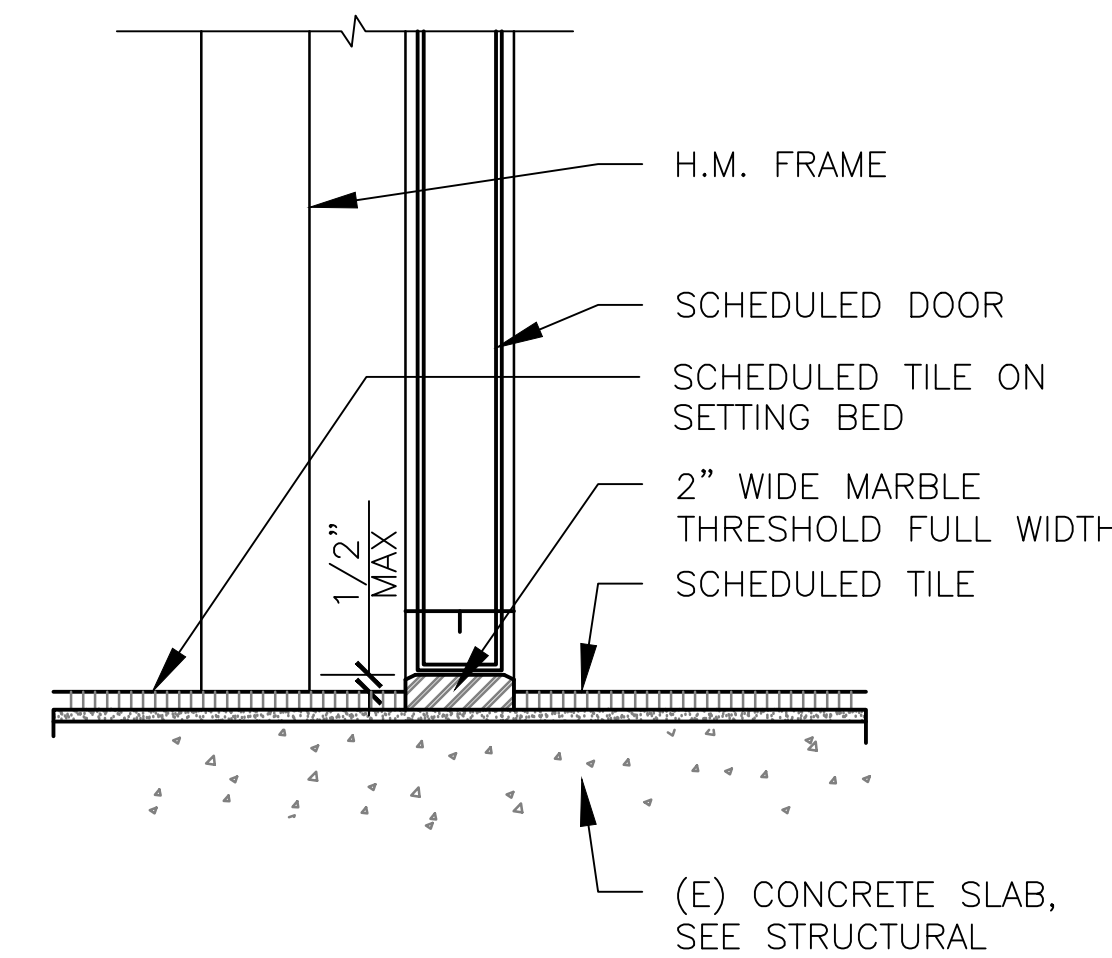




3 DOOR HEAD
SCALE 3"=1'-0"



2 DOOR JAMB
SCALE 3"=1'-0"



1 DOOR THRESHOLD
SCALE 3"=1'-0"

CONSULTANTS

ENVIRONMENTAL
PAR ENVIRONMENTAL
SERVICES, INC.
1906 21ST STREET
SACRAMENTO, CA 95811
(916) 739-8356
MLMANIER@YAHOO.COM
JGMANIER@YAHOO.COM

HAZMAT
RGA ENVIRONMENTAL
2817 MCGAW AVENUE
IRVINE, CA 92614
(949)864-2025
DAVID.SILVERI@TERRACON.COM



ARCHITECT/ENGINEERS:
JACOBS
Jacobs Engineering Group Inc.
Consultants in Architecture, Engineering,
Planning, and the Environment

Irvine Office
3161 Michelson Drive, Suite 500
Irvine, California 92612
(949) 224-7500 Fax (949) 224-7501

Drawing Title	DOOR AND WINDOW DETAILS
–	
–	


Approved: Project Director

Project Title	FORT ROSECRANS NATIONAL CEMETERY PUBLIC INFORMATION CENTER
---------------	---

Location		
FORT ROSECRANS NATIONAL CEMETERY CABRILLO MEMORIAL DR, SAN DIEGO, CA 92106		
Date	Checked	Drawn
08/04/2015	DE	EN

Project Number	892-CM3-034
Building Number	- 1001
Drawing Number	AE203
Dwg 14	of 35

**NATIONAL CEMETERY
ADMINISTRATION
DESIGN AND
CONSTRUCTION
SERVICE**

 Department of
Veterans Affairs

DOORS

MATERIAL LEGEND

DOOR
WD WOOD (SOUND CORE)

FRAME
HM HOLLOW METAL

<u>FINISH</u>	
P-2	PAINT
FF	FACTORY FINISH
WV	WOOD VENEER

NOTES:

1. ALL DOORS SHALL BE FLUSH - 1 3/4" THICK UNLESS NOTED OTHERWISE.
2. TOP & SIDE RAILS SHALL BE 9" MIN. BOTTOM RAILS SHALL BE 12" MIN.
3. FOR DOORS WHICH RECEIVE SIGNS, SEE SIGNAGE COLUMN FOR QUANTITY.

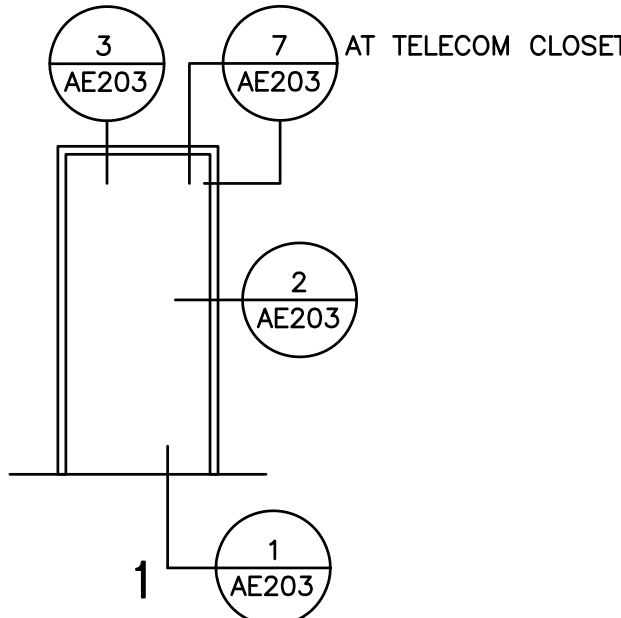
DOOR SCHEDULE

NOTE:

1. REFER TO AE301 & AS101 FOR SIGNAGE REQUIREMENTS
2. REFER TO ELECTRICAL FOR SECURITY SYSTEM DOOR CONTACTS AT (E) DOORS
3. REMOVE AND REPLACE (E) DOOR LEVERS AND LOCKSETS AT DOOR 103,104,105A,107

DOOR TYPES

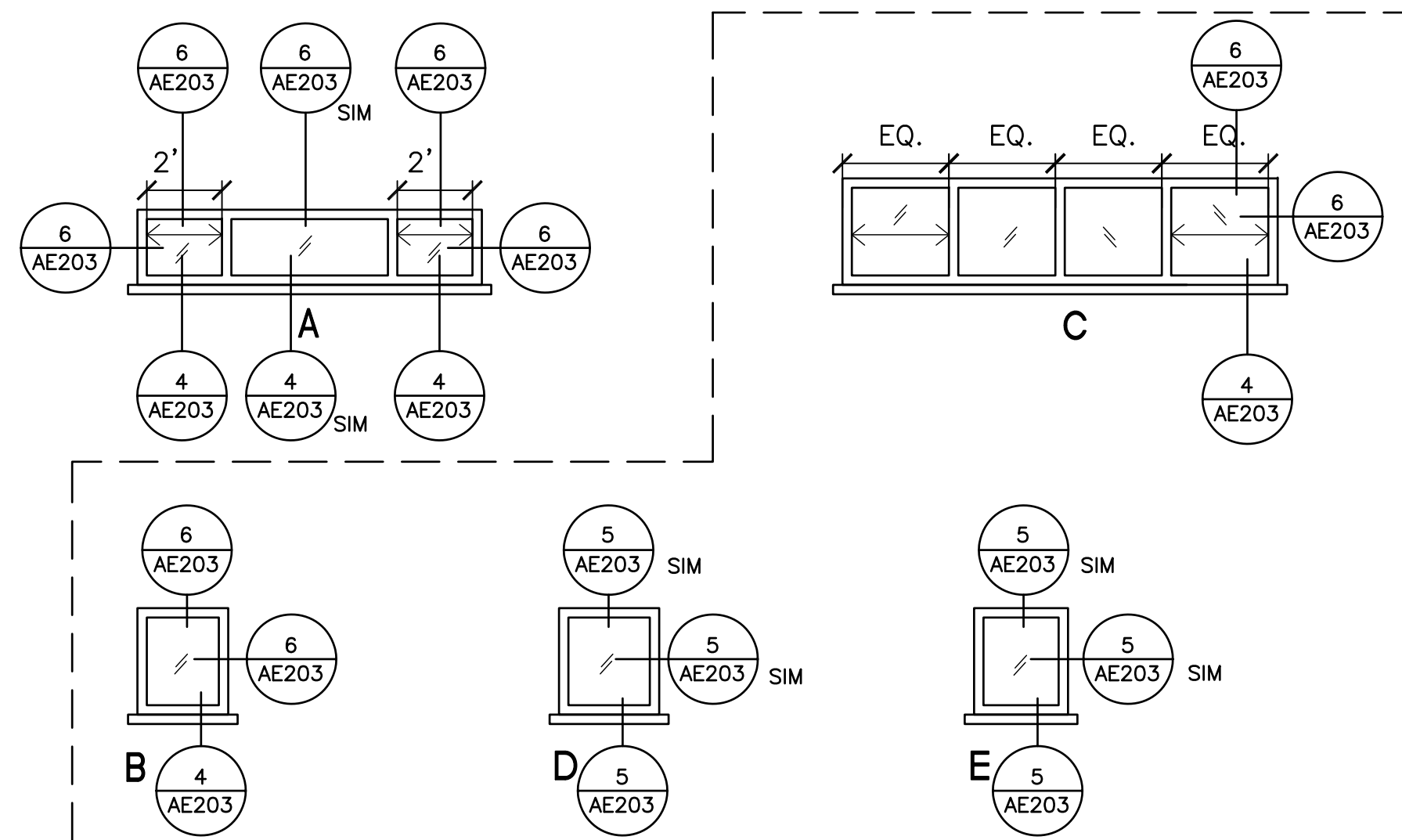
FRAME TYPES



WINDOW SCHEDULE

NOTE:
1. REFER TO ELECTRICAL FOR WINDOW SECURITY REQUIREMENTS

FRAME TYPES



NOTES:

1. GL-1 - CLEAR INSULATING GLASS UNIT
 2. GL-2 - OBSCURE INSULATED GLASS UNIT ON #3 WINDOW PANE
- ARROW INDICATES SLIDING SASH
3. REFERENCE SPECIFICATION FOR
 4. HARDWARE

- BID ALTERNATE
NO. 3

CONSULTANTS:

ENVIRONMENTAL
PAR ENVIRONMENTAL
SERVICES, INC.
1906 21ST STREET
SACRAMENTO, CA 95811
(916) 739-8356
MLMANIERY@YAHOO.COM
JGMANIERY@YAHOO.COM

HAZMAT

RGA ENVIRONMENTAL
2817 McGAW AVENUE
IRVINE, CA 92614
(949)864-2025
DAVID.SILVERIO@TERRACON.COM



ARCHITECT/ENGINEERS:

JACOBS

Jacobs Engineering Group Inc.
Consultants in Architecture, Engineering,
Planning, and the Environment

Irvine Office
3161 Michelson Drive, Suite 500
Irvine, California 92612
(949) 224-7500 Fax (949) 224-7501

Drawing Title	DOOR, WINDOW, AND FINISH SCHEDULES
---------------	------------------------------------

Approved: Project Director

1

Project Title	FORT ROSECRANS NATIONAL CEMETERY PUBLIC INFORMATION CENTER
---------------	---

Location	FORT ROSECRANS NATIONAL CEMETERY CABRILLO MEMORIAL DR, SAN DIEGO, CA 92106
----------	---

Date

08/04

Project Number
892-CM3-034

Building Number
- 1001

Drawing Number

AF101

NATIONAL CEMETERY
ADMINISTRATION
DESIGN AND
CONSTRUCTION
SERVICE

