

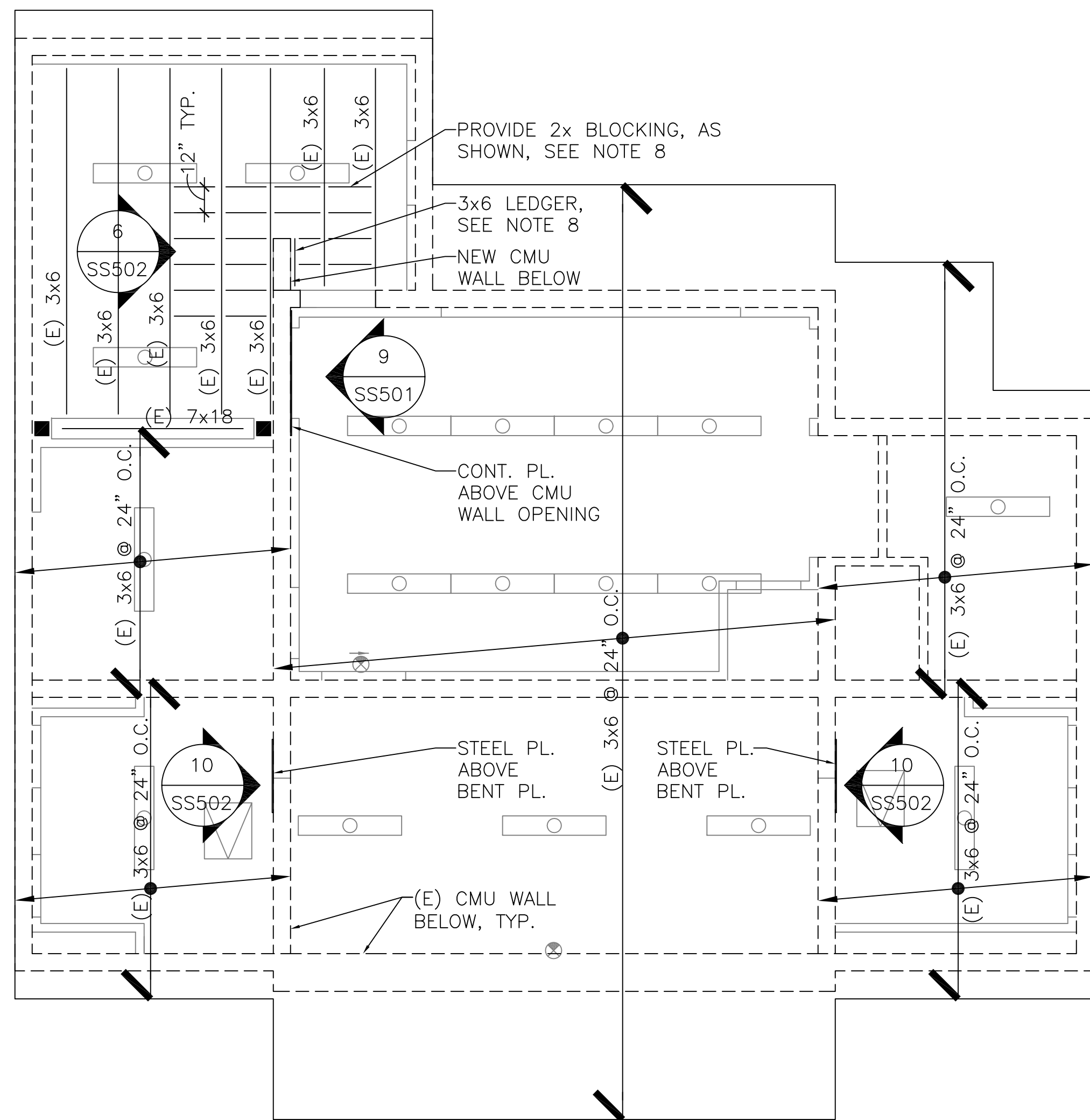
1

three inches = one foot
one inch = one foot
one and one half inches = one foot
one inch = one foot
three quarters inch = one foot
one half inch = one foot
three eighths inch = one foot
one quarter inch = one foot
one eighth inch = one foot
one sixteenth inch = one foot

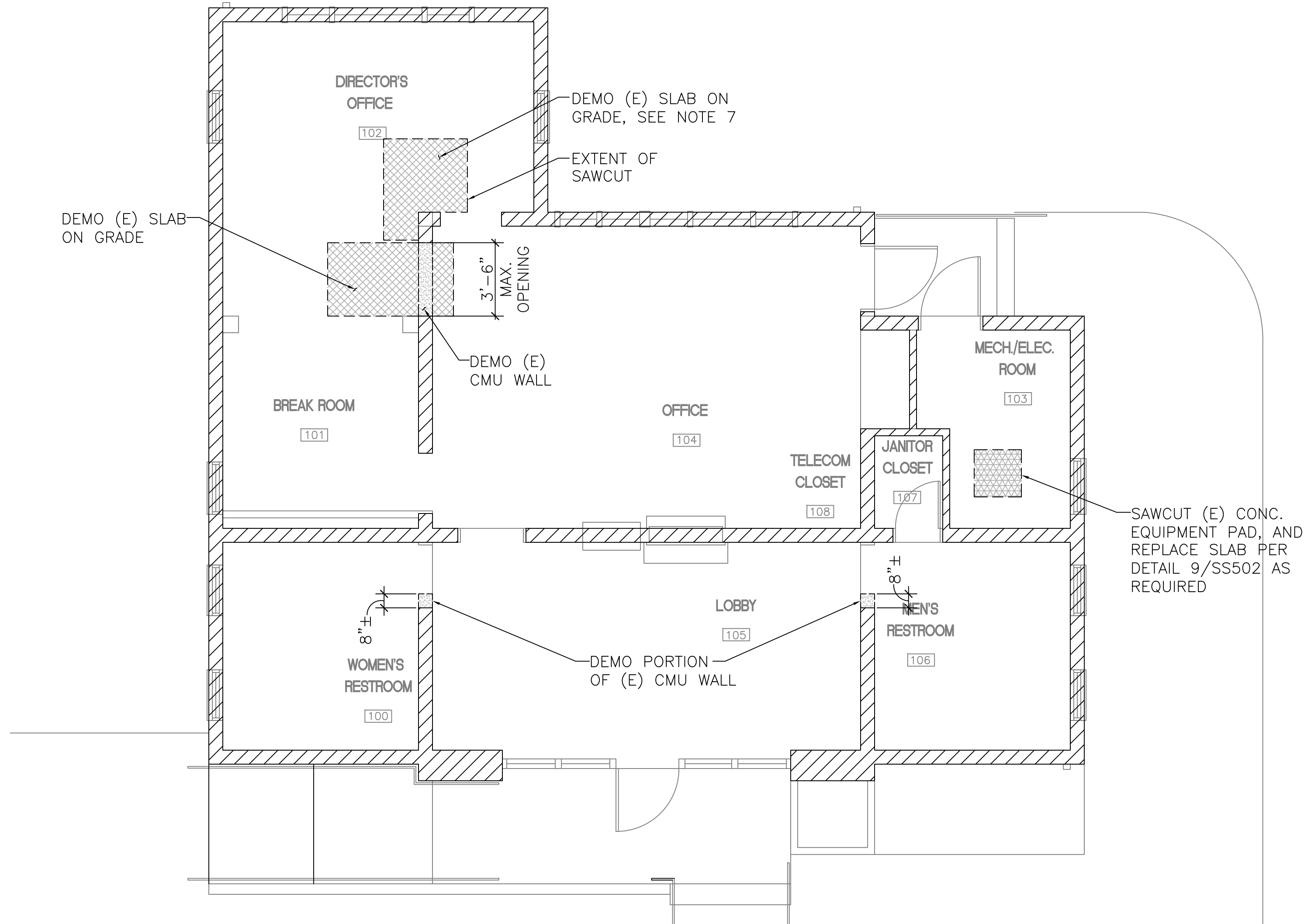
P:\7400\739 - VA Fort Rosecrans\740.03\STRUCTURAL\SS101-Demo Foundation & Roof Framing Plans.dwg 7-30-15 02:46:04 PM onewe

VA FORM 08-6231

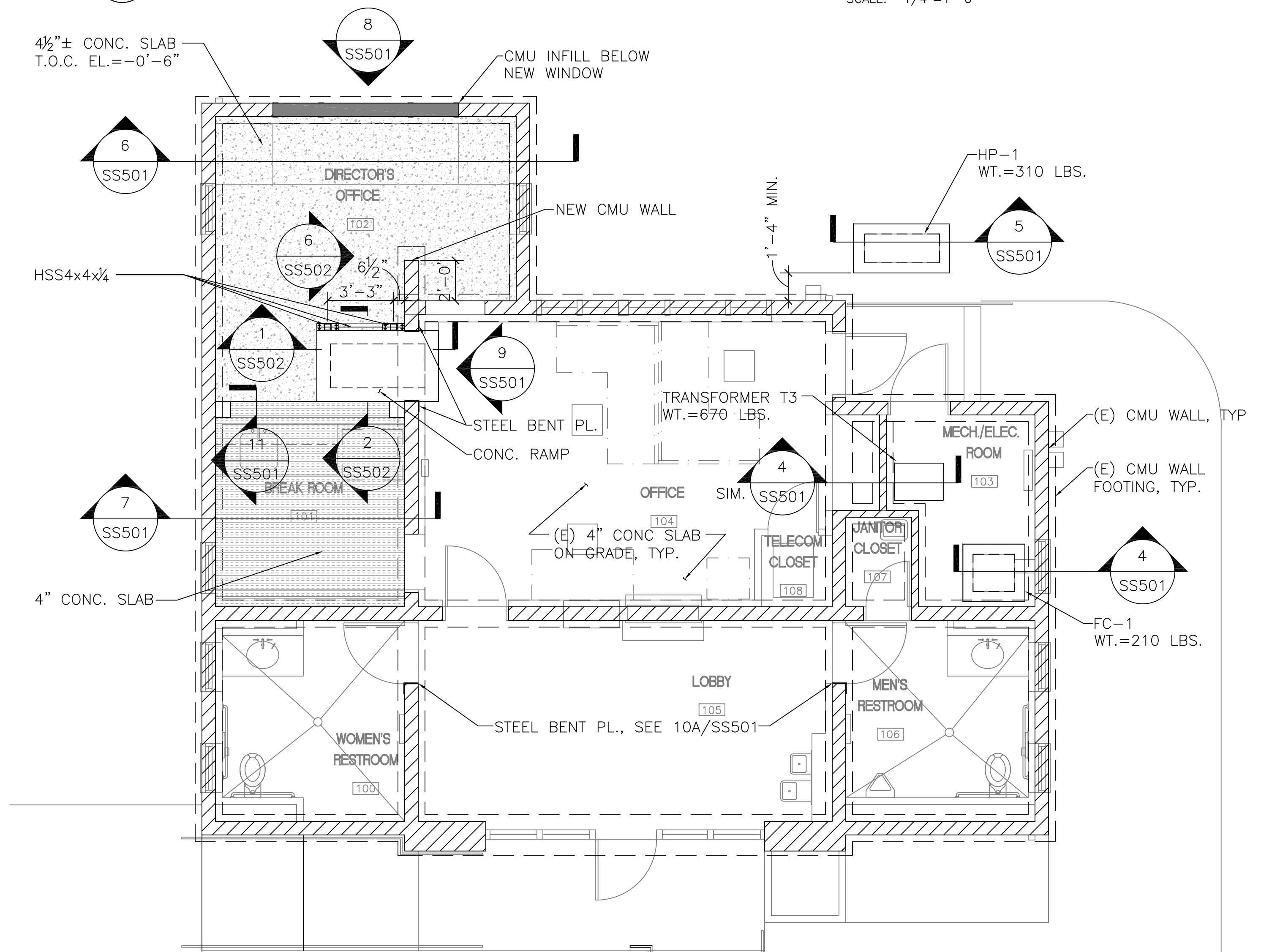
3 ROOF FRAMING PLAN
SCALE 1/4" = 1'-0"



1 DEMO PLAN
SCALE 1/4" = 1'-0"



2 FOUNDATION PLAN
SCALE 1/4" = 1'-0"



GENERAL NOTES

- CONTRACTOR TO VERIFY ALL DIMENSIONS PRIOR TO COMMENCEMENT OF WORK, AND NOTIFY ENGINEER OF ANY DISCREPANCIES.
- T.O.C. EL.=0'-0" U.N.O.
- CONTRACTOR TO COORDINATE LOCATION AND AMOUNT OF SAWCUT REQUIRED FOR NEW PIPE INSTALLATION, AND PATCH PER DETAIL 4/SS502.
- CONTRACTOR TO COORDINATE CMU WALL PENETRATIONS FOR DUCTWORK, AND SHALL LOCATE DUCT TO AVOID CUTTING EXISTING REBAR FOR OPENINGS REQUIRED AS POSSIBLE. PROVIDE REINFORCING PER DETAIL 5/SS502 FOR OPENINGS 13"x13" OR LARGER. IF REBAR NEEDS TO BE CUT FOR OPENINGS 12"x12" OR SMALLER, PROVIDE REINFORCING PER DETAIL 5/SS502. IF (E) CMU WALL OPENING NEEDS TO BE INCREASED BY 6" OR LESS AND NO REBARS ARE CUT, NO ADDITIONAL REINFORCING IS REQUIRED. (U.N.O.) SEE MECHANICAL PLANS FOR DUCT PENETRATIONS OF CMU WALL. OPENINGS SHOULD BE ABOVE CEILING IF THERE IS CEILING PRESENT.
- DO NOT PENETRATE, CUT OR DAMAGE EXISTING CONCRETE FOOTING.
- CONTRACTOR TO COORDINATE AND VERIFY LOCATION OF EQUIPMENT WITH MECHANICAL AND ELECTRICAL PRIOR TO INSTALLING CONCRETE PADS.
- CONTRACTOR TO COORDINATE AND VERIFY AMOUNT OF SLAB TO BE DEMOLISHED FOR THE CMU WALL INSTALLATION, AND PATCH AND REPAIR CONC. SLAB AS REQUIRED PER DETAIL 9/SS502 AND PROVIDE #4 BARS @ 16" O.C., EA. WAY IN NEW CONC. SLAB.
- STAIN AND SEAL EXPOSED WOOD FRAMING AS REQUIRED TO MATCH EXISTING EXPOSED WOOD FRAMING.
- DO NOT HANG OR SUPPORT FROM EXISTING 1x DIAGONAL SHEATHING. USE EXISTING JOIST TO PROVIDE SUPPORT AS REQUIRED.

LEGEND

- NEW CONCRETE SLAB OVER (E) CONCRETE SLAB ON GRADE. SEE ARCH. FOR FINISH FLOOR ELEVATION.
- NEW 4" CONCRETE SLAB OVER NEW RIGID INSULATION OVER (E) CONCRETE SLAB ON GRADE. SEE ARCH. FOR FINISH FLOOR ELEVATION.
- DEMO (E) CONCRETE SLAB.
- DEMO (E) EQUIPMENT PAD.
- DEMO (E) CMU WALL.
- (E) CMU WALL OPENING INFILL.

TRUE NORTH

CONSULTANTS:

ENVIRONMENTAL
PAR ENVIRONMENTAL
SERVICES, INC.
1906 21ST STREET
SACRAMENTO, CA 95811
(916) 739-8356
MLMANIERI@YAHOO.COM
JGMANIERI@YAHOO.COM

HAZMAT
RGA ENVIRONMENTAL
2817 MCGAW AVENUE
IRVINE, CA 92614
(949) 864-2025
DAVID.SILVERI@TERRACON.COM



ARCHITECT/ENGINEERS:

JACOBS
Jacobs Engineering Group Inc.
Consultants in Architecture, Engineering,
Planning, and the Environment
Irvine Office
3161 Michelson Drive, Suite 500
Irvine, California 92612
(949) 224-7500 Fax (949) 224-7501

Drawing Title
**FOUNDATION, DEMO AND
ROOF FRAMING PLANS**

Approved Project Director

Project Title
**FORT ROSECRANS NATIONAL CEMETERY
PUBLIC INFORMATION CENTER**

Location
**FORT ROSECRANS NATIONAL CEMETERY
CABRILLO MEMORIAL DR. SAN DIEGO, CA 92106**

Date
08/04/2015

Checked
KH

Drawn
GV

Project Number
892-CM3-034

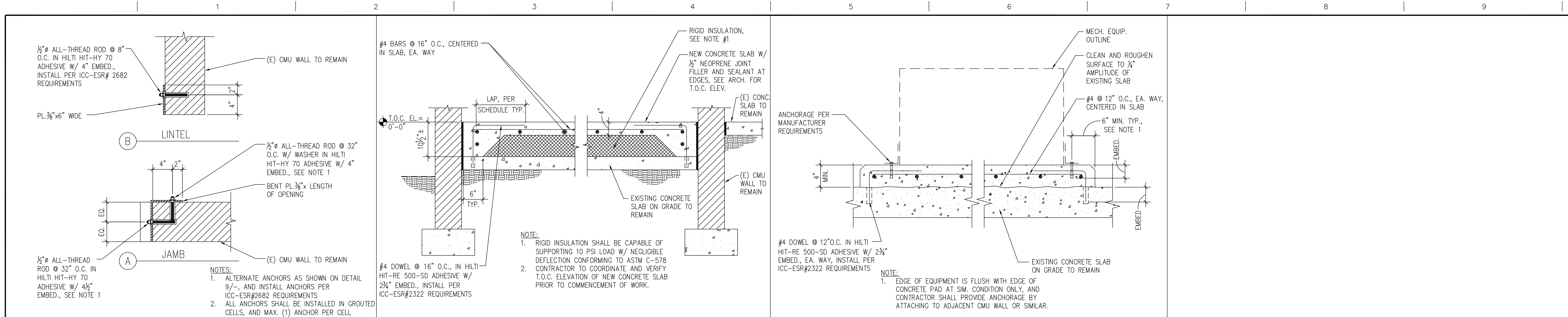
Building Number
1001

Drawing Number
SS101

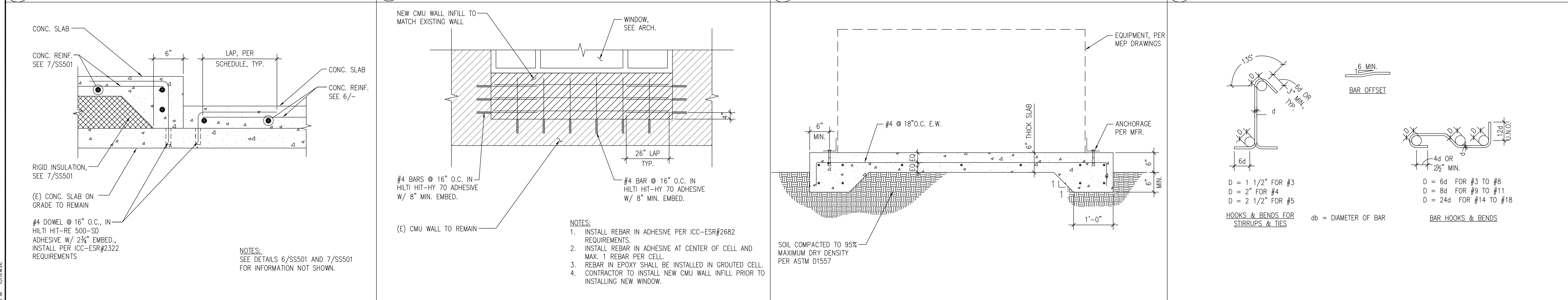
Dwg 18 of 35

**NATIONAL CEMETERY
ADMINISTRATION
DESIGN AND
CONSTRUCTION
SERVICE**

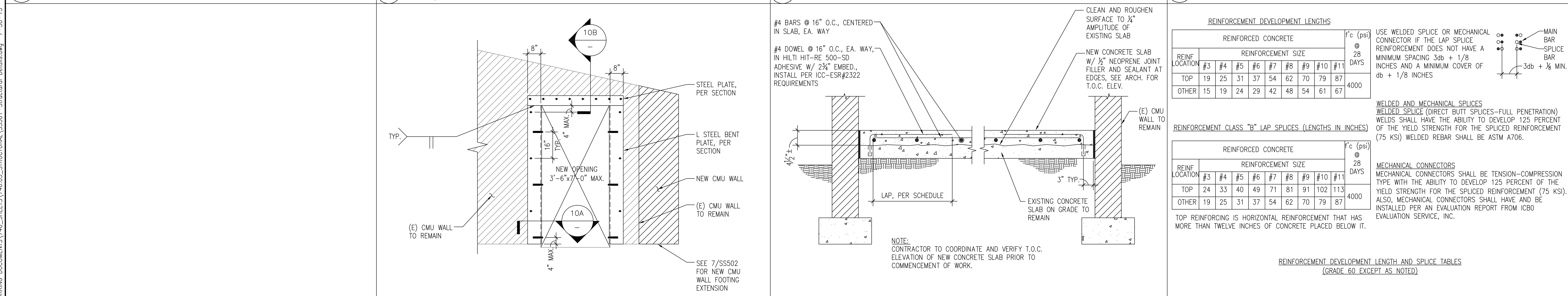




10 JAMB AND LINTEL REINFORCING SCALE 1 1/2"=1'-0"
7 CONC. TOPPING OVER RIGID INSULATION SCALE 1"=1'-0"
4 TYP. CONC. EQUIPMENT PAD SCALE 1"=1'-0"
1 NOT USED SCALE 1"=1'-0"

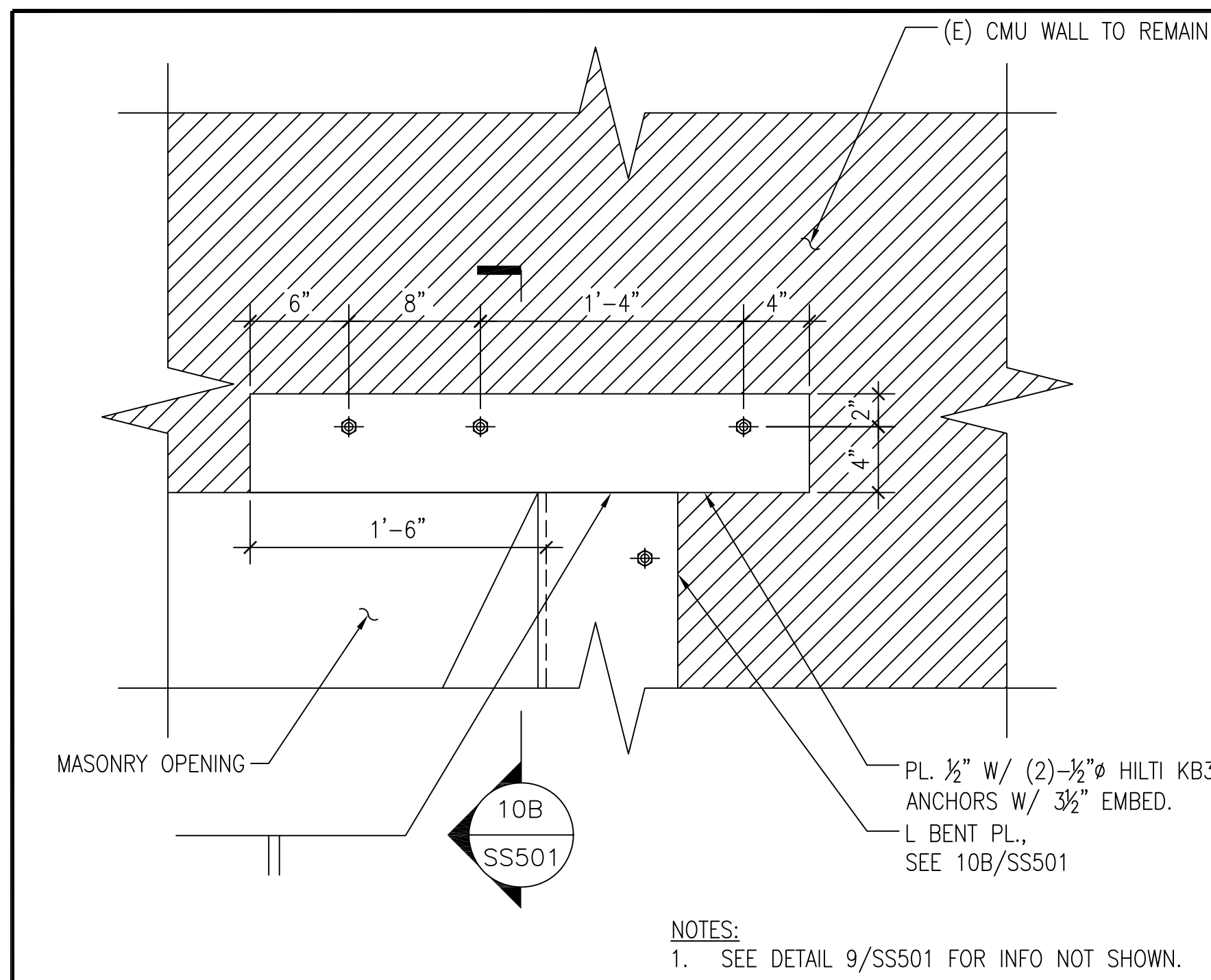


(11) CONC. TOPPING OVER (E) CONC. S.O.G. SCALE 1 1/2"=1'-0"
 (8) CMU INFILL AT WINDOW OPENING SCALE 1/2"=1'-0"
 (5) TYP. EXTERIOR CONC. EQUIPMENT PAD SCALE 1"=1'-0"
 (2) REINFORCING STEEL BENDING DETAILS SCALE 1"=1'-0"

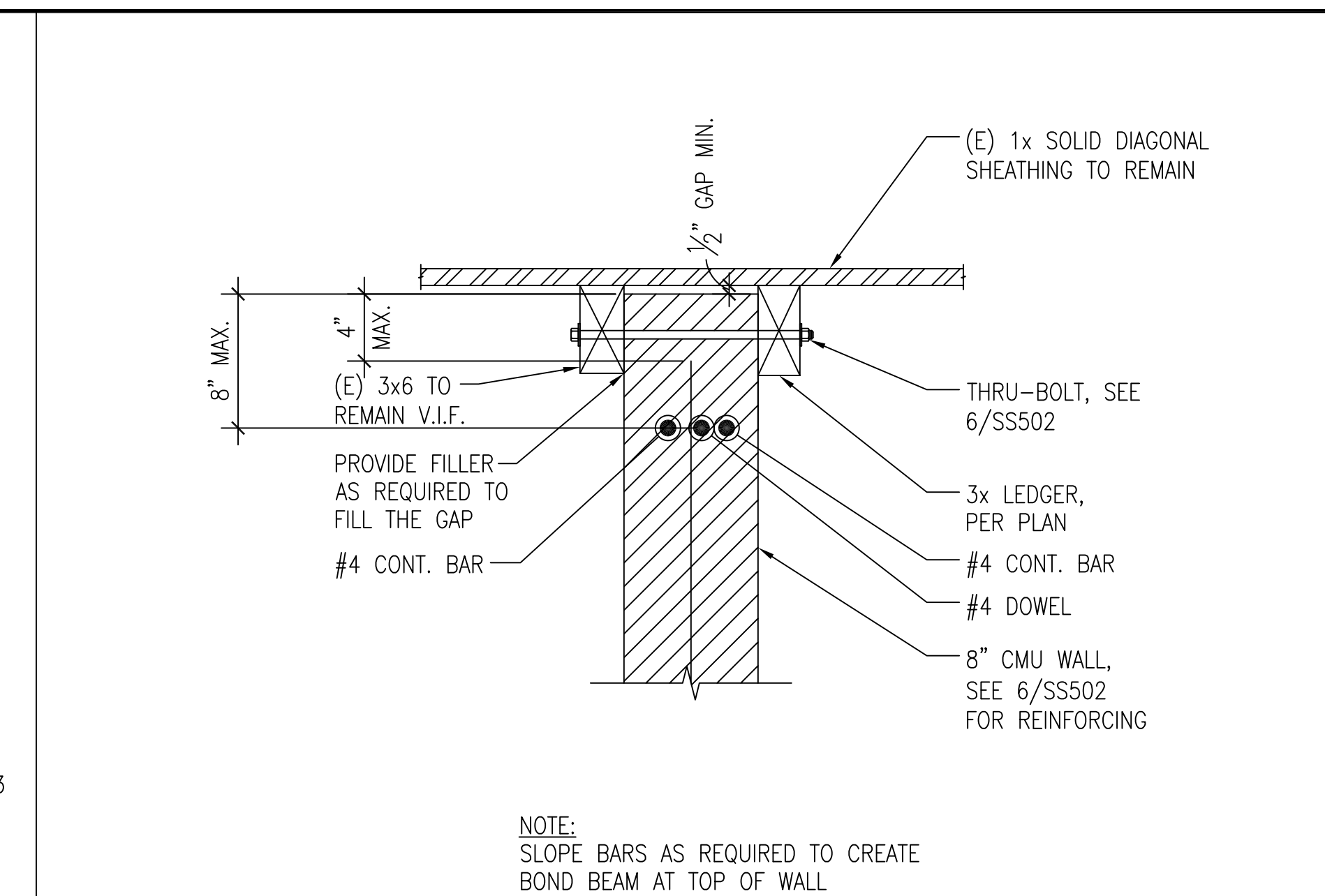


| | | | |
|-------------------------------------|--|--|--|
| <p>12 NOT USED</p> <p>SCALE N/A</p> | <p>9 MASONRY OPENING REINFORCEMENT</p> <p>SCALE 1/2"=1'-0"</p> | <p>6 CONC. TOPPING OVER (E) CONC. S.O.G.</p> <p>SCALE 1"=1'-0"</p> | <p>3 TYP. BAR LAP & SPLICE DEVELOPMENT LENGTH SCHEDULE</p> <p>SCALE 1"=1'-0"</p> |
|-------------------------------------|--|--|--|

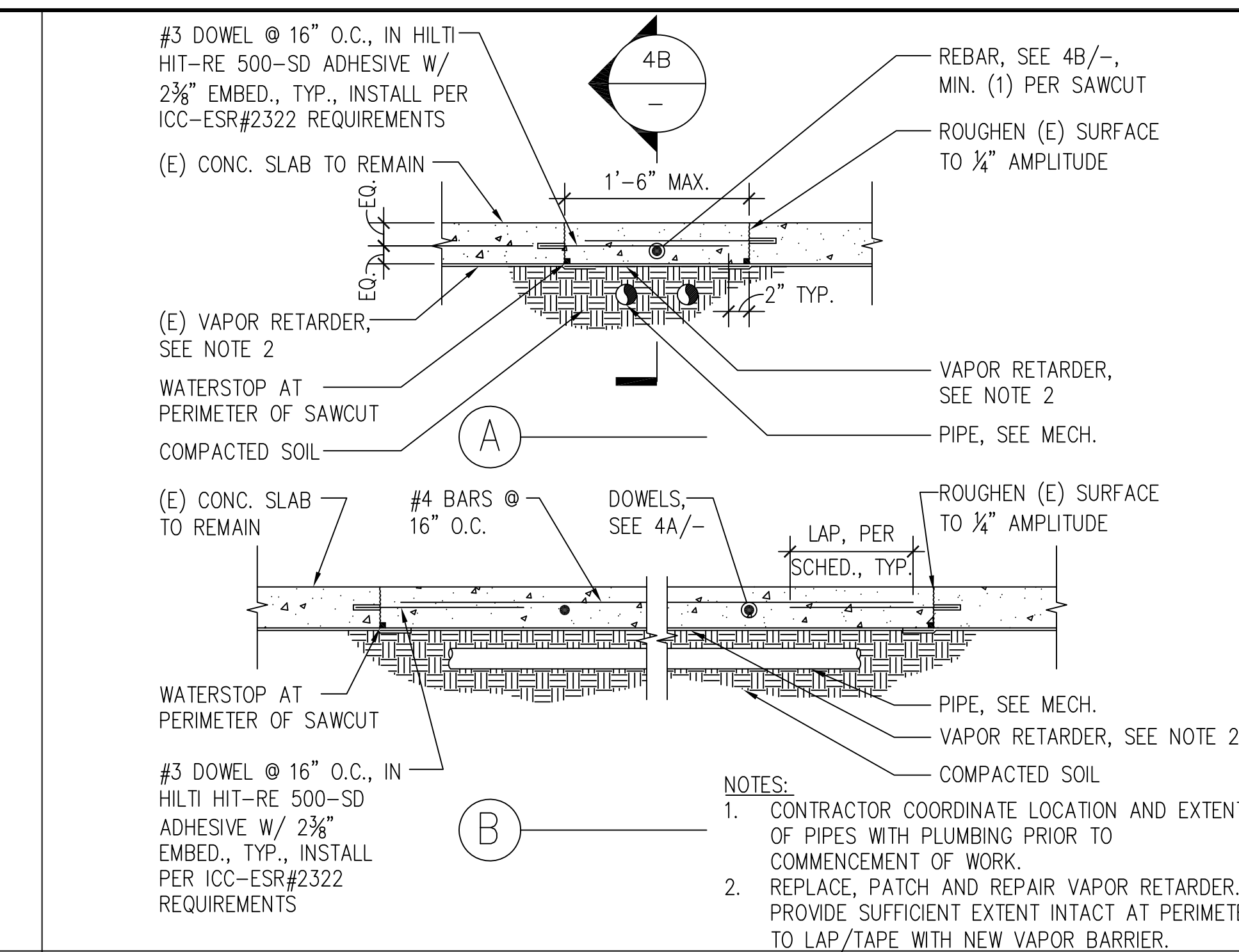
| | | | | | | | | |
|------------|------|--|--|--|--|--|--------------------------------|--|
| | - | | | | Drawing Title STRUCTURAL DETAILS | Project Title FORT ROSECRANS NATIONAL CEMETERY PUBLIC INFORMATION CENTER | Project Number 892-CM3-034 | NATIONAL CEMETERY ADMINISTRATION DESIGN AND CONSTRUCTION SERVICE |
| | - | | | | - | | Building Number 1001 | |
| | - | | | | Approved Project Director - | Location FORT ROSECRANS NATIONAL CEMETERY CABRILLO MEMORIAL DR. SAN DIEGO, CA 92106 | Drawing Number SS501 | |
| | - | | | | - | Date 08/04/2015 | Checked KH | Dwg. 19 of 35 |
| | - | | | | - | Drawn GV | | |
| Revisions: | Date | | | | | | | |



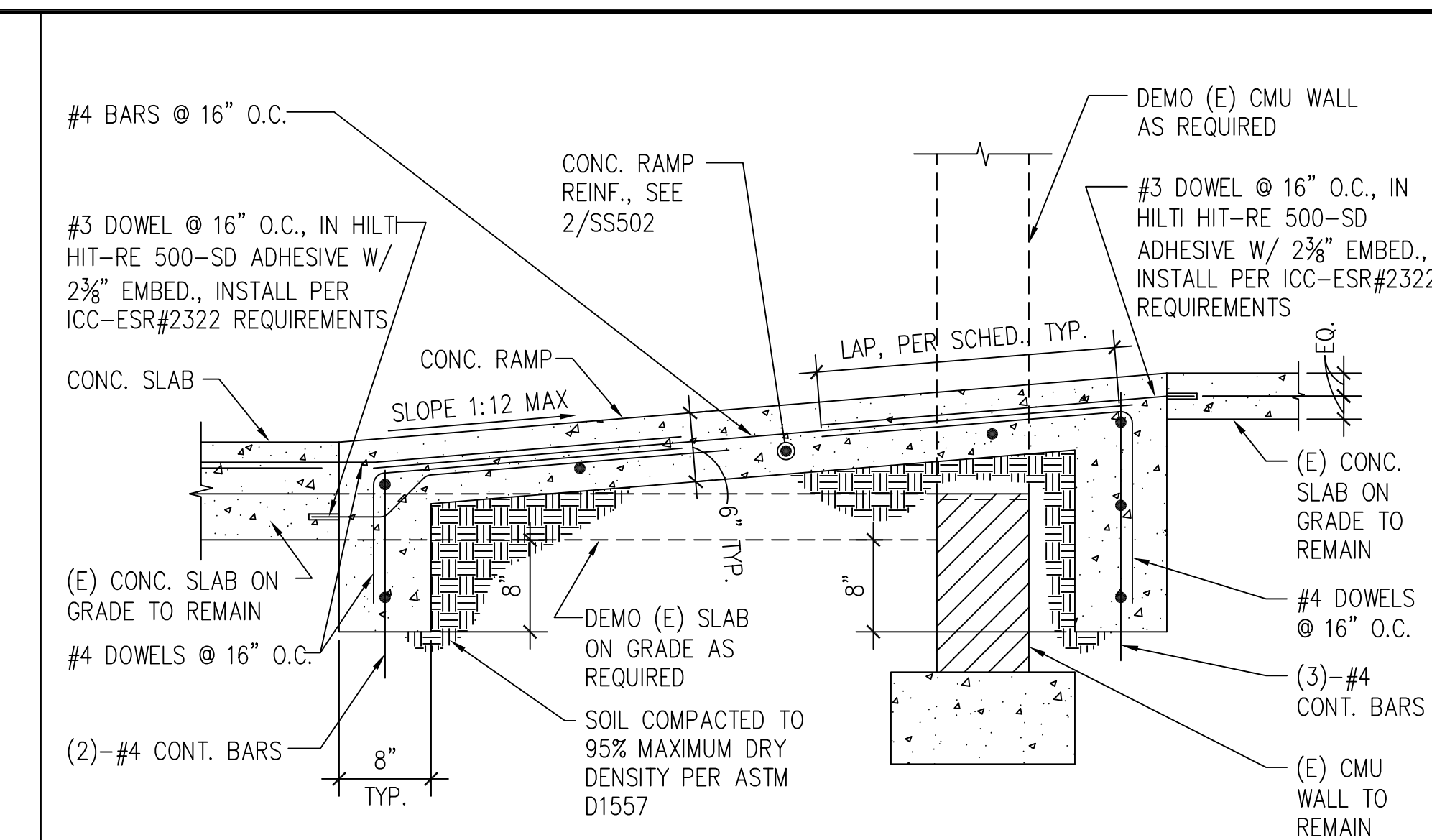
10 BENT PLATE TO PLATE CONN.
SCALE 1"=1'-0"



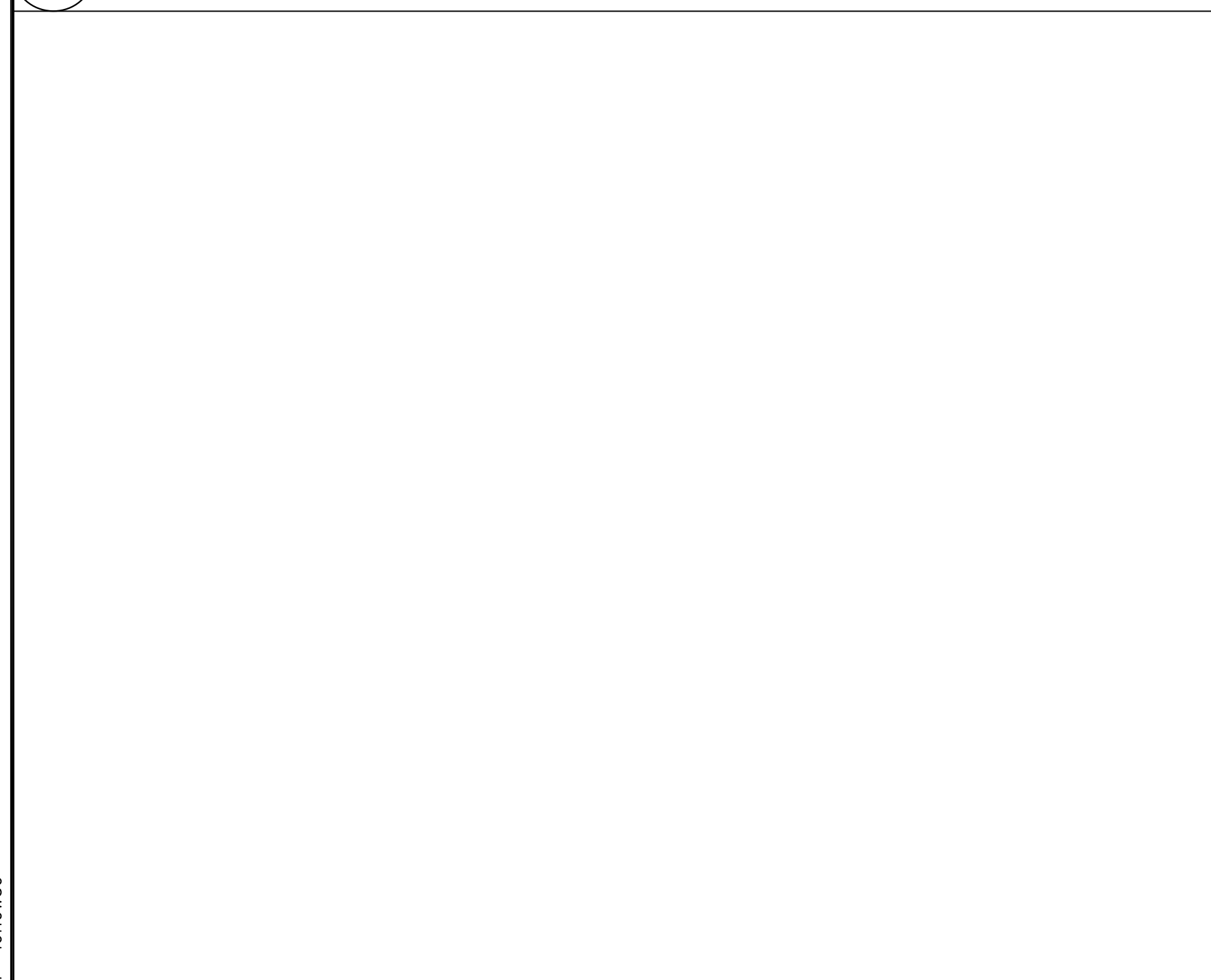
7 CMU WALL TO (E) CEILING JOIST CONN.
SCALE 1 1/2"=1'-0"



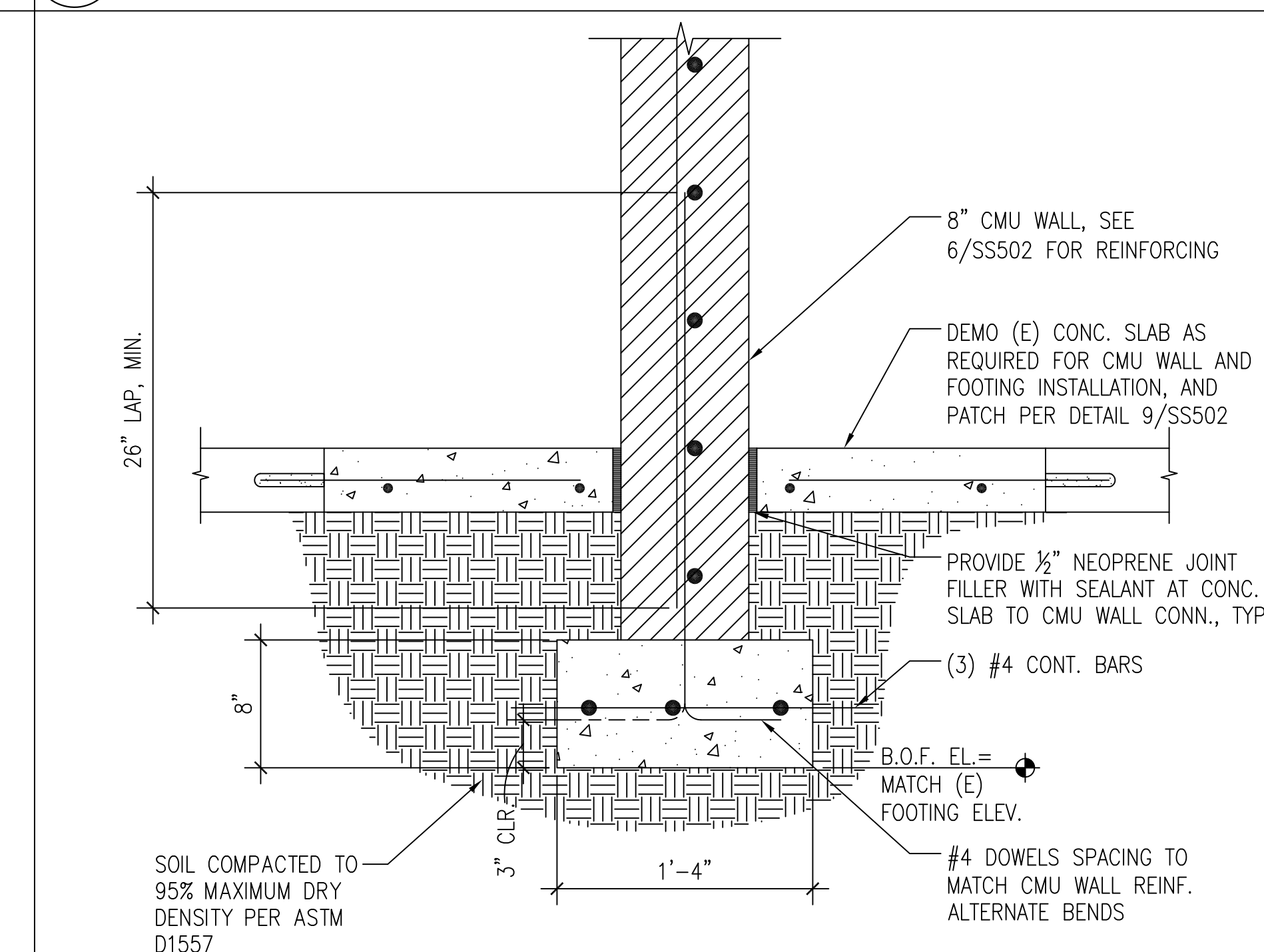
4 PATCH FOR CONCRETE SAWCUT DETAIL
SCALE 1"=1'-0"



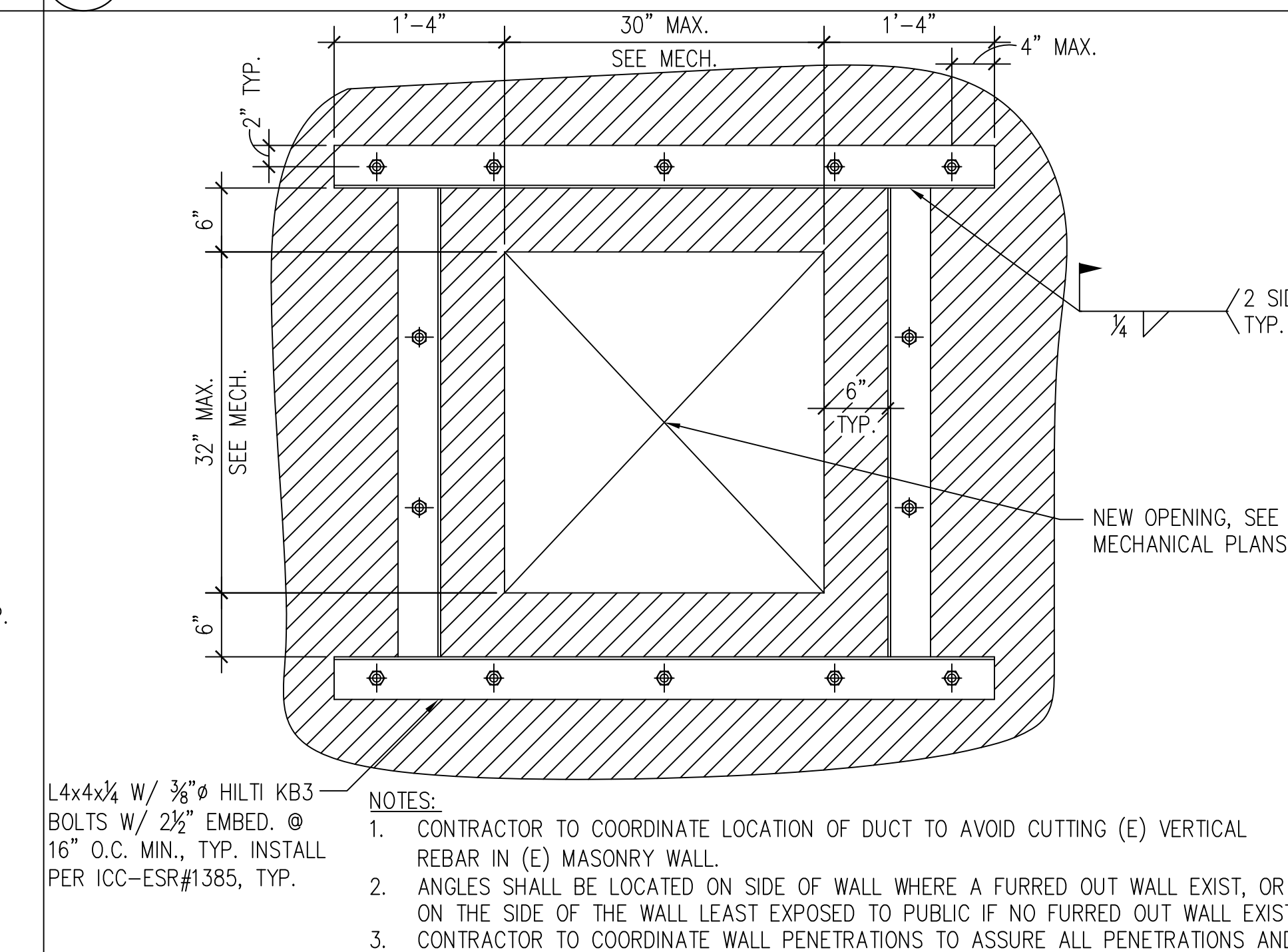
1 CONCRETE RAMP SECTION
SCALE 1"=1'-0"



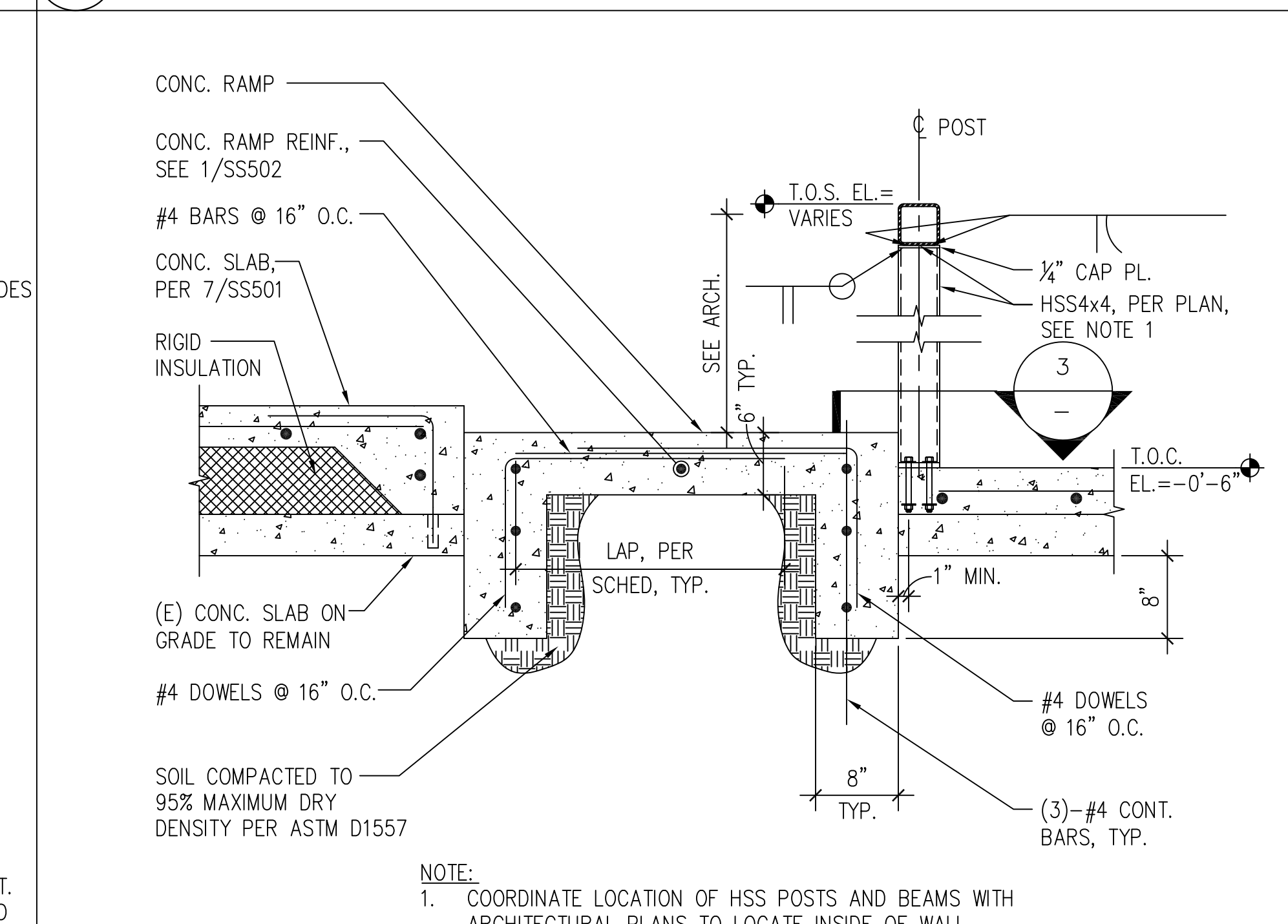
11 NOT USED
SCALE 1"=1'-0"



8 CMU WALL FOOTING DETAIL
SCALE 1 1/2"=1'-0"



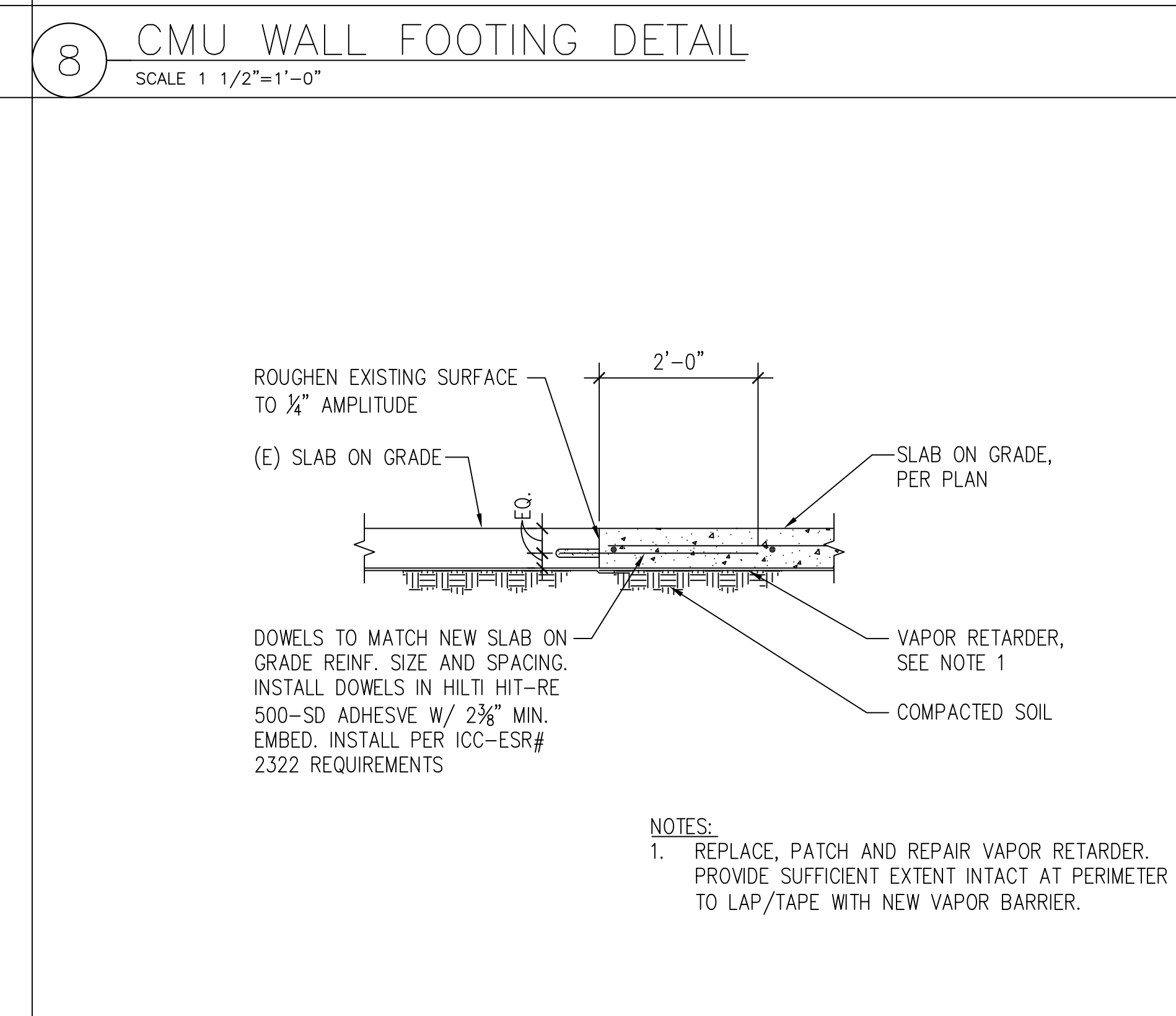
5 MASONRY WALL OPENING
SCALE 1"=1'-0"



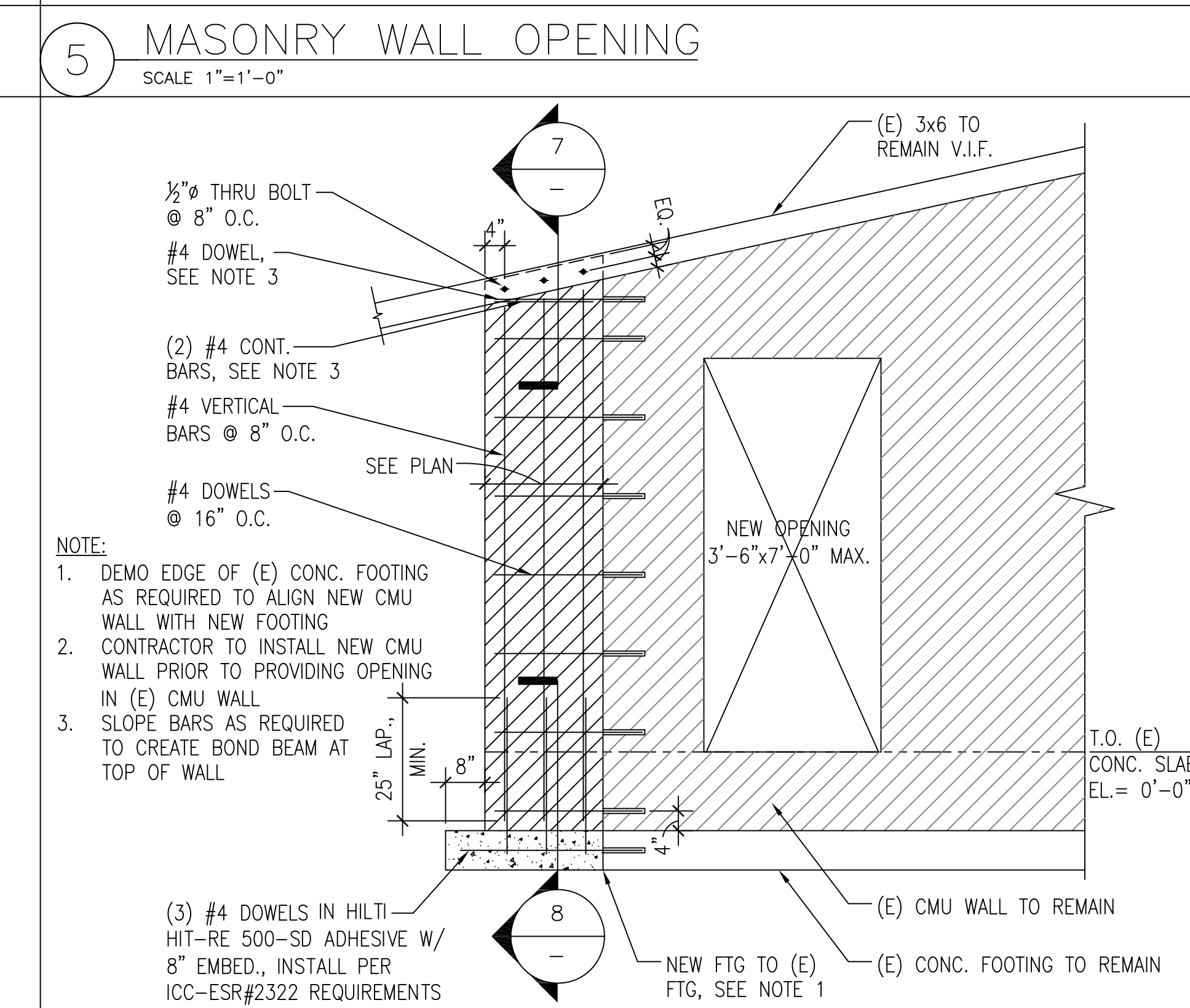
2 CONCRETE RAMP SECTION
SCALE 1"=1'-0"



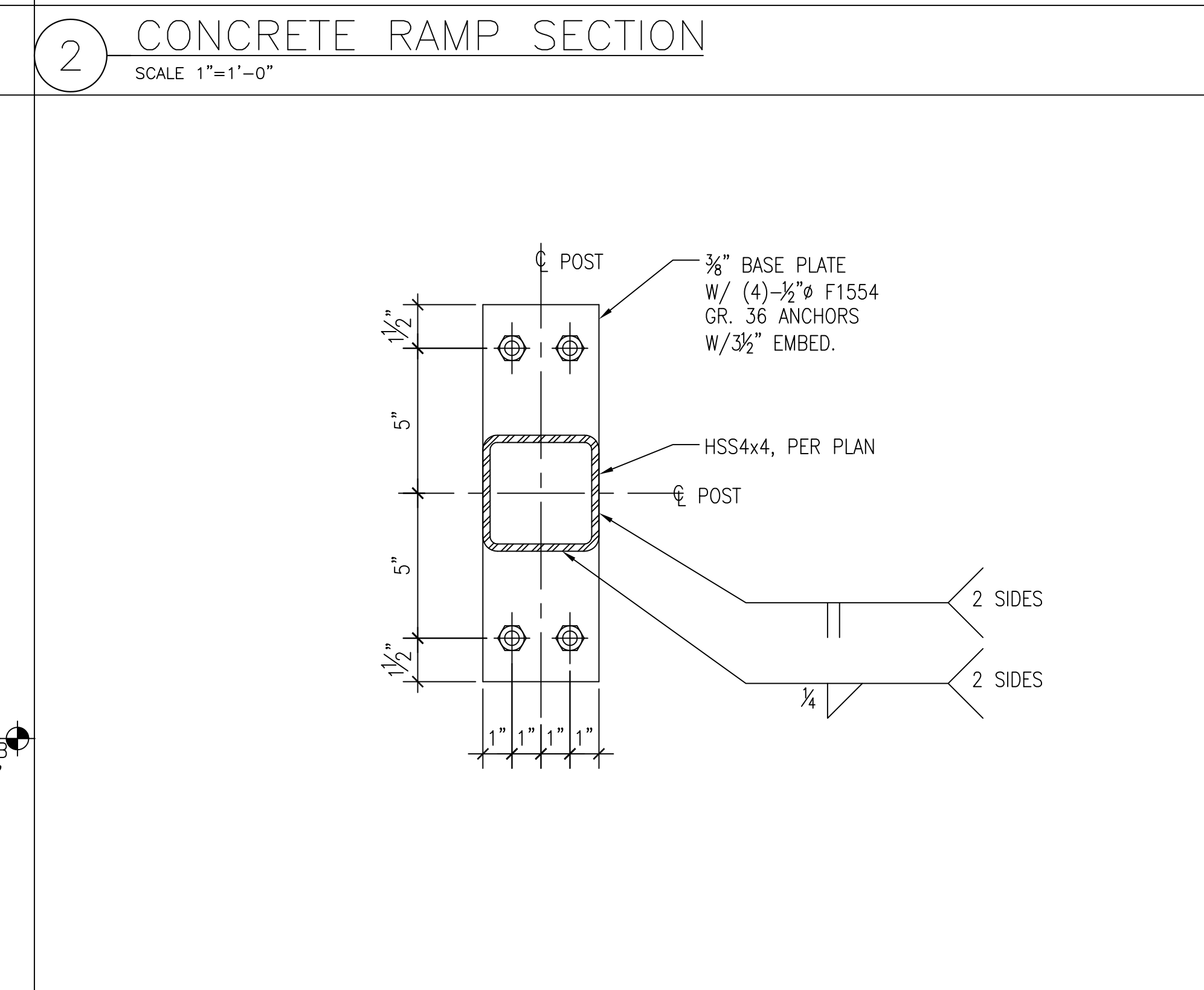
12 NOT USED
SCALE N/A



9 NEW CONC. SLAB TO (E) CONC. SLAB CONN.
SCALE 1"=1'-0"



6 CMU WALL TO (E) CMU WALL CONN.
SCALE: 1"=1'-0"



3 BASE PLATE
SCALE 3"=1'-0"

[illegible]

CONSULTANTS:

ENVIRONMENTAL
PAR ENVIRONMENTAL
SERVICES, INC.
1906 21ST STREET
SACRAMENTO, CA 95811
(916) 739-8356
MLMANIERY@YAHOO.COM
JGMANIERY@YAHOO.COM

HAZMAT

RGA ENVIRONMENTAL
2817 McGAW AVENUE
IRVINE, CA 92614
(949)864-2025
DAVID.SILVERI@TERRACON.COM



ARCHITECT/ENGINEERS:

JACOBS
Jacobs Engineering Group Inc.
Consultants in Architecture, Engineering,
Planning, and the Environment

Irvine Office
3161 Michelson Drive, Suite 500
Irvine, California 92612
(949) 224-7500 Fax (949) 224-7501

Drawing Title
STRUCTURAL DETAILS

Approved: Project Director

Project Title
FORT ROSECRANS NATIONAL CEMETERY
PUBLIC INFORMATION CENTER

| | |
|----------|---|
| Location | FORT ROSECRANS NATIONAL CEMETERY CABRILLO MEMORIAL DR, SAN DIEGO, CA 92106 |
|----------|---|

Date
08/04/2015

| | |
|---------|----|
| Checked | KH |
|---------|----|

| | |
|-----------------|-------------------------------|
| CEMETERY TER | Project Number 892-CM3-034 |
| | Building Number |

| | |
|----------------------------|----------------|
| CEMETERY IEGO, CA 92106 | Drawing Number |
|----------------------------|----------------|

Drawn
GV

NATIONAL CEMETERY
ADMINISTRATION
DESIGN AND
CONSTRUCTION
SERVICE





- ① DEMOLISH EXISTING FORCED AIR UNIT, DUCTWORK, DAMPERS, AND ALL ASSOCIATED SYSTEM APPURTENANCES.
- ② DEMOLISH EXISTING EXHAUST FAN AND DUCTWORK.
- ③ DEMOLISH EXISTING THERMOSTAT.



Department of
Veterans Affairs





Diagram illustrating the assembly of a Unistrut pipe clamp. The components shown are:

- UNISTRUT PIPE CLAMP
- REFRIGERANT PIPING
- "C"-STRUT
- CONC. FOOTING
- CONC. EXPANSION ANCHOR (TYP)

6" (MIN.) CLEAR ALL ROUND UNIT (TYP)

CONDENSING UNIT

REFRIGERANT LIQUID & VAPOR LINES

UNIT MOUNTING LEG

CONC. PAD, SEE STRUCTURAL SEE DRAWINGS

UNIT MOUNTING LEG

METAL WASHER

CONC. EXPANSION ANCHOR

METAL WASHER

UNISTRUT

CONC. PAD

AIR FLOW

Detailed description: This technical diagram illustrates the installation of a condensing unit. The main view shows a 3D perspective of the condensing unit, which is a rectangular box with a label indicating 'AIR FLOW' with an arrow pointing to the right. It is mounted on a metal base plate. Two refrigerant lines, labeled 'REFRIGERANT LIQUID & VAPOR LINES', exit from the bottom of the unit. The base plate is supported by 'UNIT MOUNTING LEG's. A dimension line indicates a '6" (MIN.) CLEAR ALL ROUND UNIT (TYP)' clearance around the unit. A callout provides a detailed cross-sectional view of the mounting leg's attachment to a 'CONC. PAD' (concrete pad). This detail shows the mounting leg passing through a 'METAL WASHER', a 'CONC. EXPANSION ANCHOR' (a bolt with a wedge-shaped anchor), and another 'METAL WASHER' into the concrete pad. A 'UNISTRUT' is shown supporting the base plate from below.

8 CEILING REGISTER DETAIL
SCALE N.T.S.

Technical drawing of a rectangular panel assembly. The panel is rectangular with an 'X' brace formed by two diagonal lines. The width of the panel is dimensioned as 60" MAX. The panel is secured to joists above by a hanger strap (TYP.) at the top. The panel is supported by TEK SCREWS at the bottom. The distance between the screws is dimensioned as 1" MIN.

(E) ROOF

FACTORY SUPPLIED
FILTER RACK W/
PLEATED DISPOSABLE FILTERS
(FARR 30/30 TYPE,
OR EQUIVALENT)

LAG SCREW
(TYP EACH ANGLE TAB)

(E) CONC SLAB 18" MIN.

SA DUCT, SEE
FLOOR PLANS FOR SIZE
& CONFIGURATION

UPFLOW FAN COIL UNIT

REFRIGERANT PIPING

CONDENSATE DRAIN

SECURE TAB TO UNIT

NEOPRENE PAD (TYP 4),
(M.W. SAUSSE TYPE "RC"
OR EQUIVALENT)

ANGLE TAB (TYP)

METAL FRAMED
PLATFORM

RA DUCT

NOTE

1. ANGLE DN AT 45° WHERE MOUNTING HEIGHT IS GREATER THAN 12 FT.

Diagram illustrating the installation of a duct hanger strap for a 36" DIA. DUCT (MAX.).

- SECURE TO JOISTS ABOVE
- HANGER STRAP
- LOAD RATED FASTENERS
- 36" DIA. DUCT (MAX.)
- BAND OF SAME SIZE AS HANGER STRAP

Diagram illustrating the installation of a duct hanger strap for a 24" DIA. DUCT (MAX.).

- SECURE TO JOISTS ABOVE
- HANGER STRAP
- LOAD RATED FASTENERS
- 24" DIA. DUCT (MAX.)

INDOOR UNIT

FC

RL

RS

REFRIGERANT LIQUID & REFRIGERANT SUCTION LINES BOTH INSULATED & JACKETED.

OUTDOOR UNIT

HP

SEALED PVC CONDUIT BELOW GRADE. ROUTE UNDER (E) WALKWAY.

GRADE

FLARED CONNECTION (TYP.)

- NOTES
1. REFRIGERANT PIPING CONNECTIONS & SIZES SHALL CONFORM TO REQUIREMENTS OF THE TYPE & MODEL HVAC SYSTEM USED AS RECOMMENDED BY HVAC SYSTEM MANUFACTURER.
 2. PROVIDE SILE GLASS, LIQUID RECEIVER, AND FILTER DRYER.
 3. PROVIDE STAINLESS STEEL JACKET FOR PIPING AND INSULATION EXPOSED TO WEATHER.

| | |
|-------------------|-------------|
| | |
| -- | -- |
| -- | -- |
| -- | -- |
| -- | -- |
| -- | -- |
| -- | -- |
| -- | -- |
| -- | -- |
| -- | -- |
| Revisions: | Date |

| <u>ENVIRONMENTAL</u> | <u>HAZMAT</u> |
|----------------------------------|----------------------------|
| PAR ENVIRONMENTAL SERVICES, INC. | RG&A ENVIRONMENTAL |
| 1906 21ST STREET | 2817 McGAW AVENUE |
| SACRAMENTO, CA 95811 | IRVINE, CA 92614 |
| (916) 739-8356 | (949)864-2025 |
| MLMANIERY@YAHOO.COM | DAVID.SILVERI@TERRACON.COM |
| JCMANIERY@YAHOO.COM | |



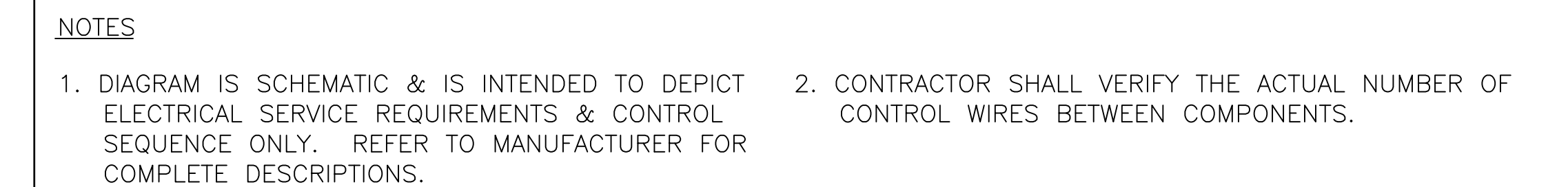
JACOBS
Jacobs Engineering Group Inc.
Consultants in Architecture, Engineering,
Planning, and the Environment

Irvine Office
3161 Michelson Drive, Suite 500
Irvine, California 92612
(949) 224-7500 Fax (949) 224-7501

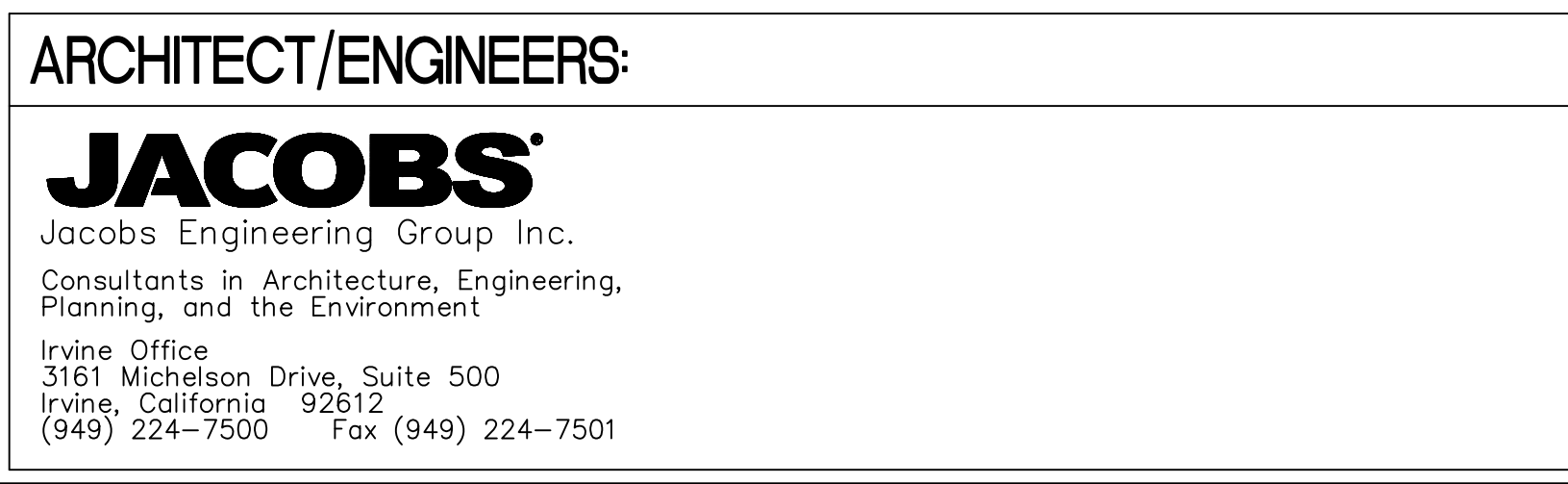
Approved: Project Director

MH201

 Department of
Veterans Affairs




| | |
|---|--|
| CONSULTANTS: | |
| <u>ENVIRONMENTAL</u> PAR ENVIRONMENTAL SERVICES, INC. 1906 21ST STREET SACRAMENTO, CA 95811 (916) 739-8356 MLMANIER@YAHOO.COM JGMANIER@YAHOO.COM | <u>HAZMAT</u> RGA ENVIRONMENTAL 2817 MCGAW AVENUE IRVINE, CA 92614 (949)864-2025 DAVID.SILVERI@TERRACON.COM |



| | | | |
|---|---------|-----------------|--|
| Project Title | | Project Number | |
| FORT ROSECRANS NATIONAL CEMETERY PUBLIC INFORMATION CENTER | | 892-CMG-034 | |
| Location | | Building Number | |
| FORT ROSECRANS NATIONAL CEMETERY CABRILLO MEMORIAL DR, SAN DIEGO, CA 92106 | | - 1001 | |
| Drawing Number | | MH202 | |
| Date | Checked | Drawn | |
| 08/04/2015 | CK | RH/RJ | |
| | | Dwg. 24 of 35 | |

**NATIONAL CEMETERY
ADMINISTRATION
DESIGN AND
CONSTRUCTION
SERVICE**

 **Department of
Veterans Affairs**

| REMARKS | | |
|-------------------------------|---|--|
| 1. PROVIDE HARD SHUT-OFF TXV. | 2. PROVIDE COMPRESSOR START ASSIST CAPACITOR AND RELAY. | 3. PROVIDE CU/CU COIL WITH CORROSION PROTECTIVE COATING. |

| REMARKS | |
|---------|--|
| 1. | PROVIDE WITH 3.8 kW ELECTRIC HEAT. PRIMARY HEATING SHALL BE VIA HEAT PUMP. ELECTRIC HEAT SHALL SUPPLEMENT HEAT PUMP OPERATION AS REQUIRED. CONTROLS SHALL BE FACTORY SUPPLIED BY UNIT MANUFACTURER INTERNAL TO THE UNIT. |
| 2. | PROVIDE WITH FILTER CABINET. |
| 3. | PROVIDE WITH 24/7 PROGRAMMABLE T-STAT LOCKABLE COVER. |
| 4. | SUPPORT FROM JOISTS ABOVE. |

| REMARKS | |
|--|----------------------------------|
| 1. DIRECT DRIVE. PROVIDE FAN SPEED CONTROLLER. | 3. PROVIDE ARCHITECTURAL GRILLE. |
| 2. PROVIDE INTEGRAL BACKDRAFT DAMPER. | 4. SUPPORT FROM JOISTS ABOVE. |

| REMARKS | |
|---|--|
| 1. PROVIDE WITH OPPOSED BLADE DAMPER. | 3. PROVIDE SQUARE TO ROUND TRANSITION, WHERE REQUIRED. |
| 2. PROVIDE WITH COMBINATION BALANCING DAMPER/EXTRACTOR. | |

VA FORM 08-6231