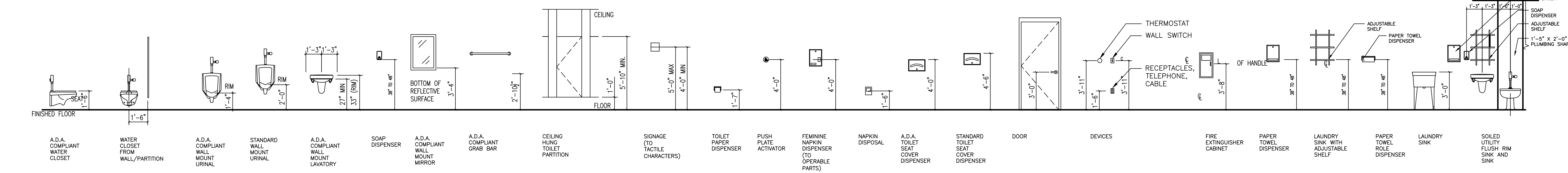
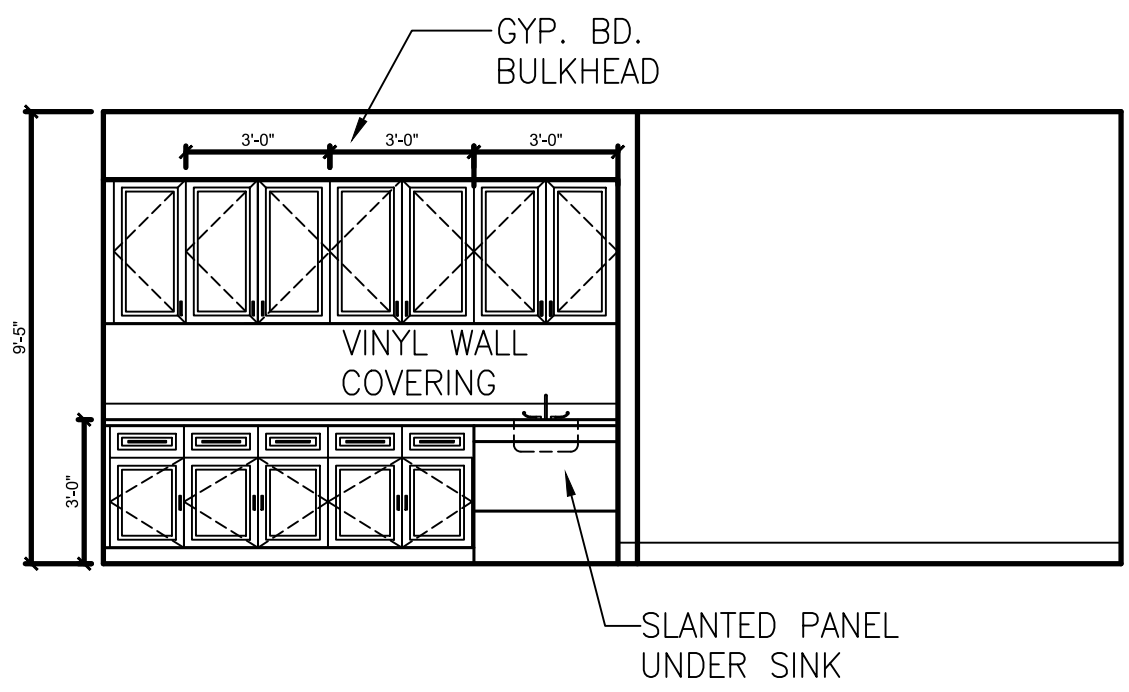


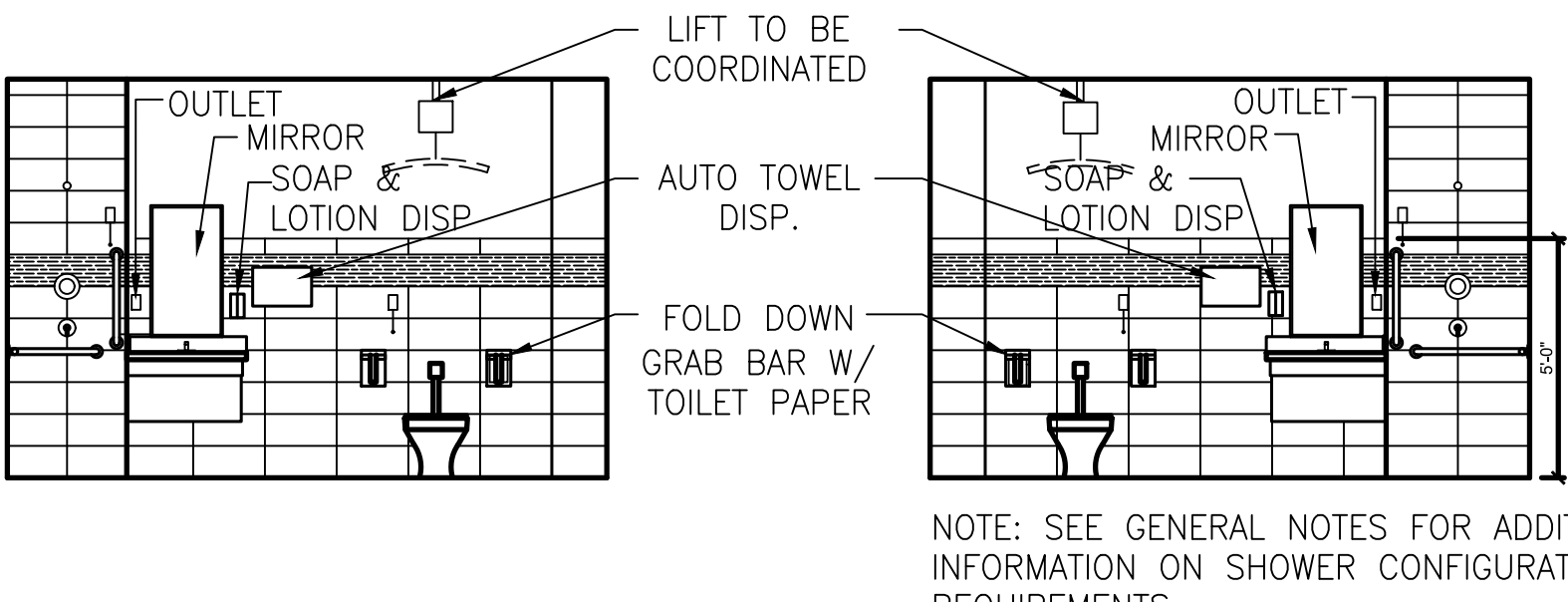
three inches = one foot
 one and one half inches = one foot
 one inch = one foot
 three quarters inch = one foot
 one half inch = one foot
 three eighths inch = one foot
 one quarter inch = one foot
 one eighth inch = one foot



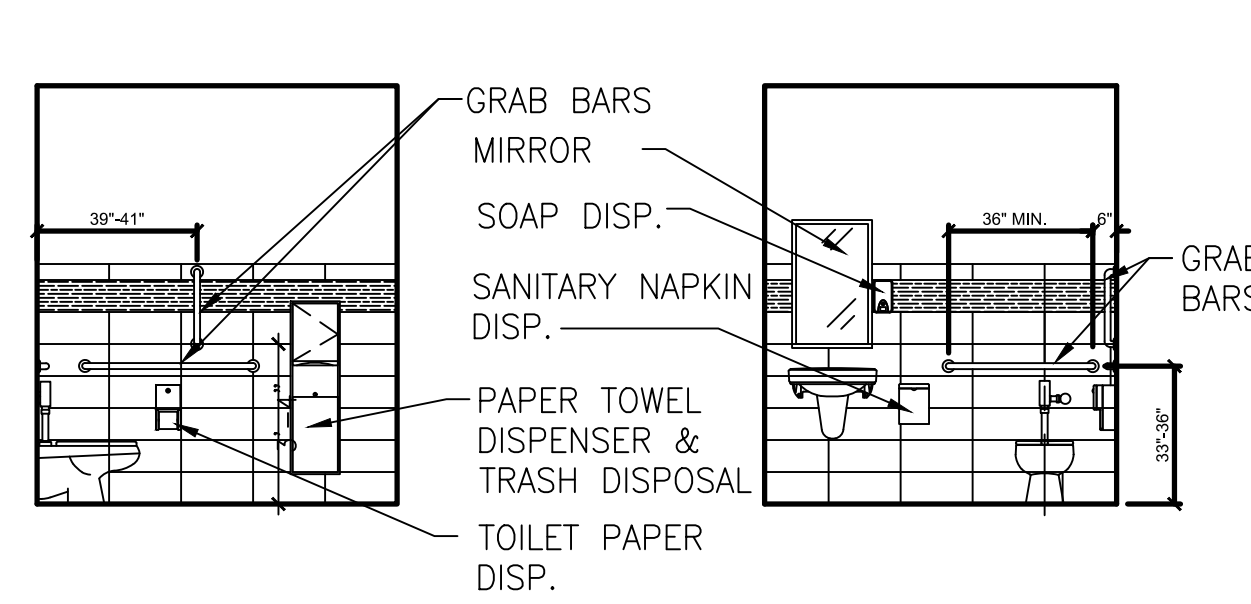
1 Standard Mounting Heights
 Scale: 1/4"=1'-0"



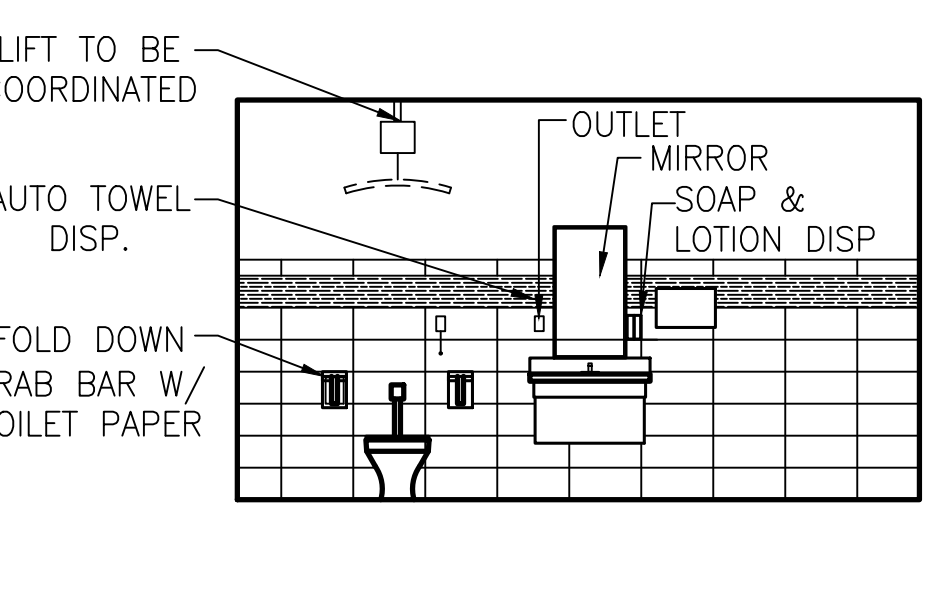
2 Multi-Purpose A312 (Looking West)
 Scale: 1/4"=1'-0"



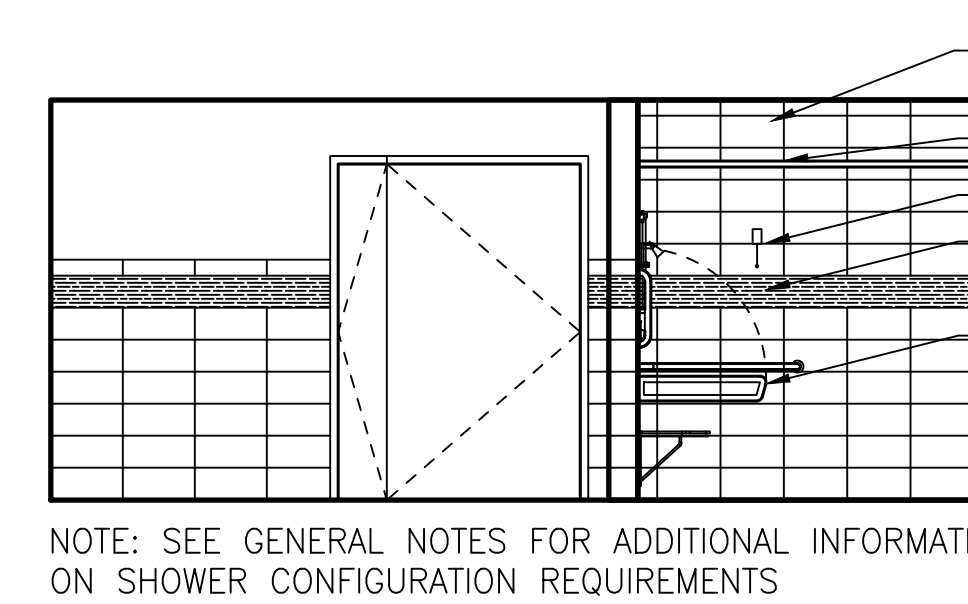
7 Private Resident Toilet Room (Typ.)
 Scale: 1/4"=1'-0" REFERE TO PLANS FOR ORIENTATION



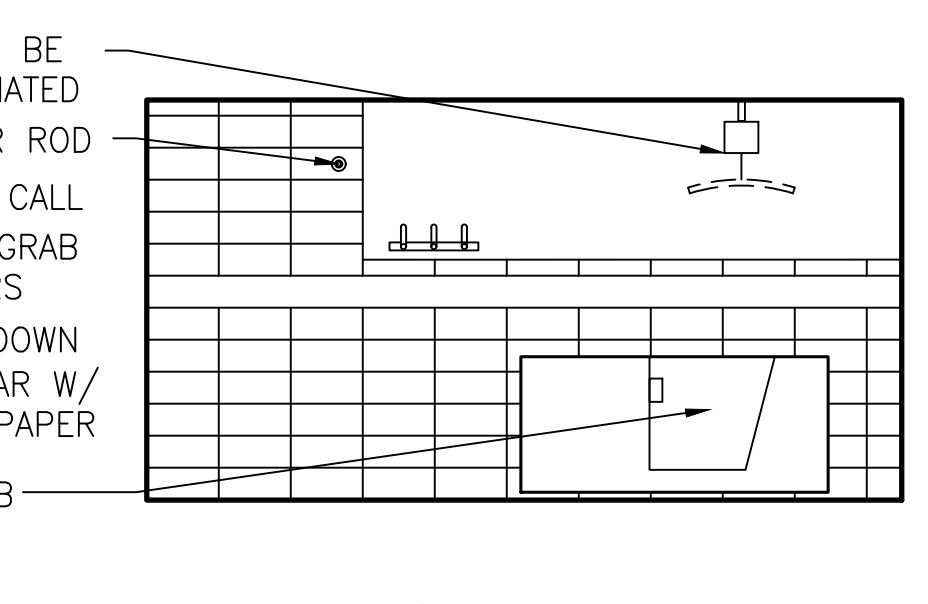
8 Public & Staff Toilet Rooms (Typ.)
 Scale: 1/4"=1'-0" REFERE TO PLANS FOR ORIENTATION



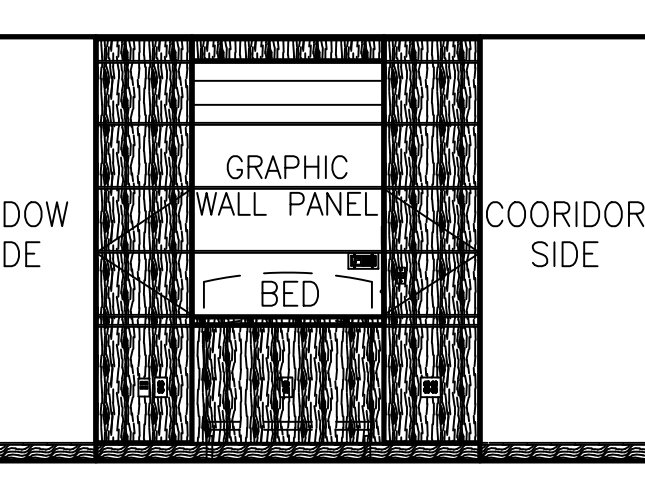
9 Bathing Suite-Tub (Typ.)
 Scale: 1/4"=1'-0" REFERE TO PLANS FOR ORIENTATION



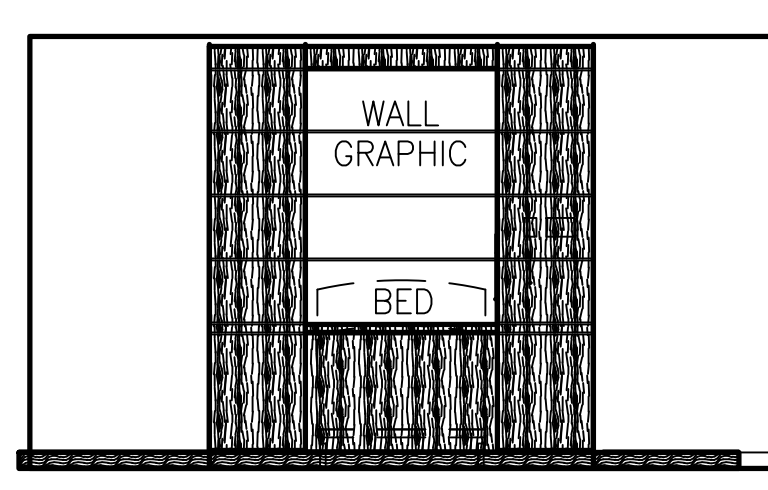
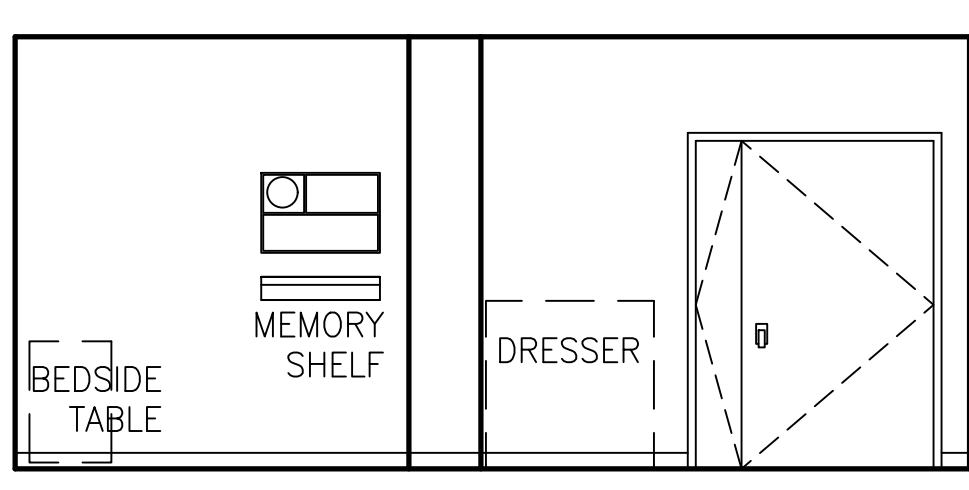
10 Bathing Suite-Toilet (Typ.)
 Scale: 1/2"=1'-0" REFERE TO PLANS FOR ORIENTATION



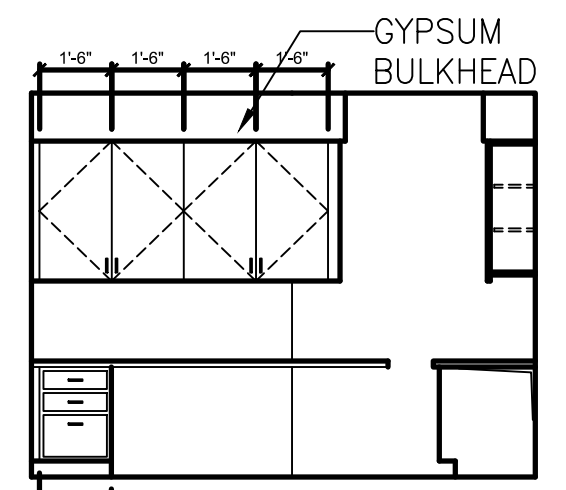
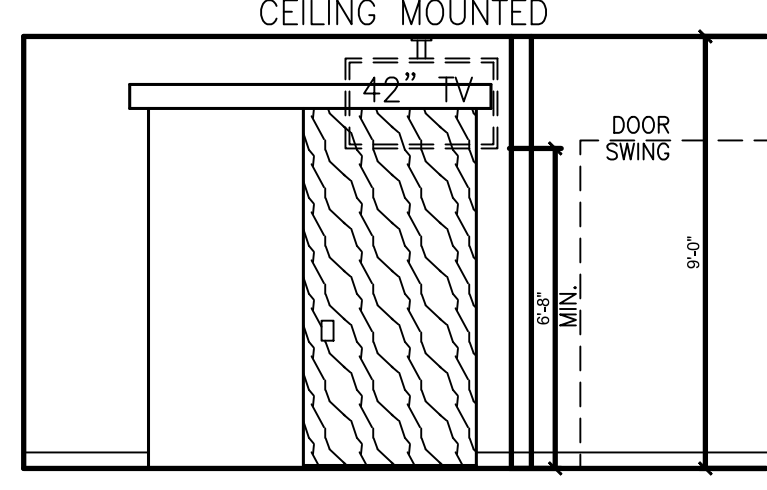
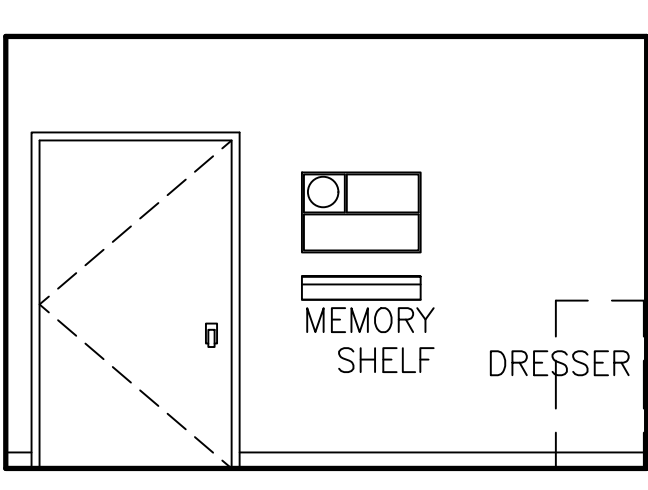
11 Bathing Suite-Shower (Typ.)
 Scale: 1/2"=1'-0" REFERE TO PLANS FOR ORIENTATION



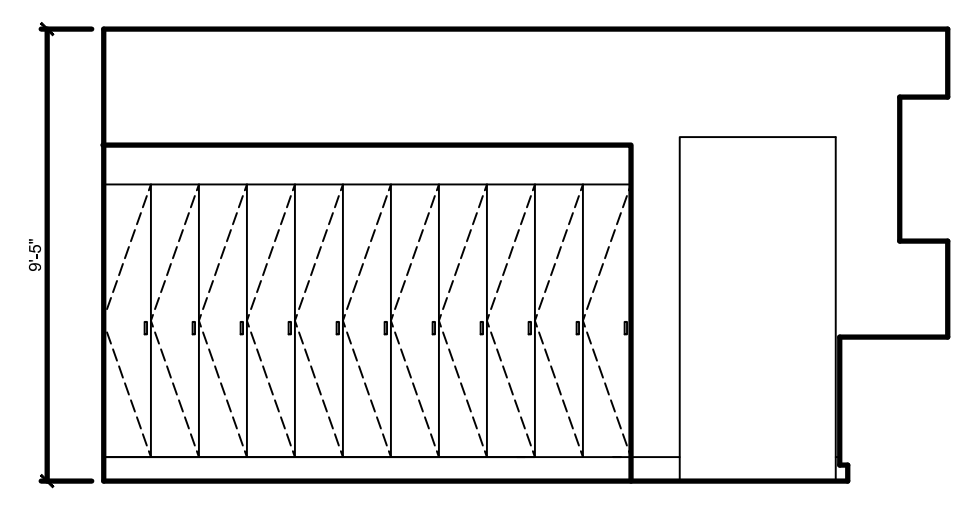
12 Bariatric Resident Room (Typ.)
 Scale: 1/4"=1'-0"



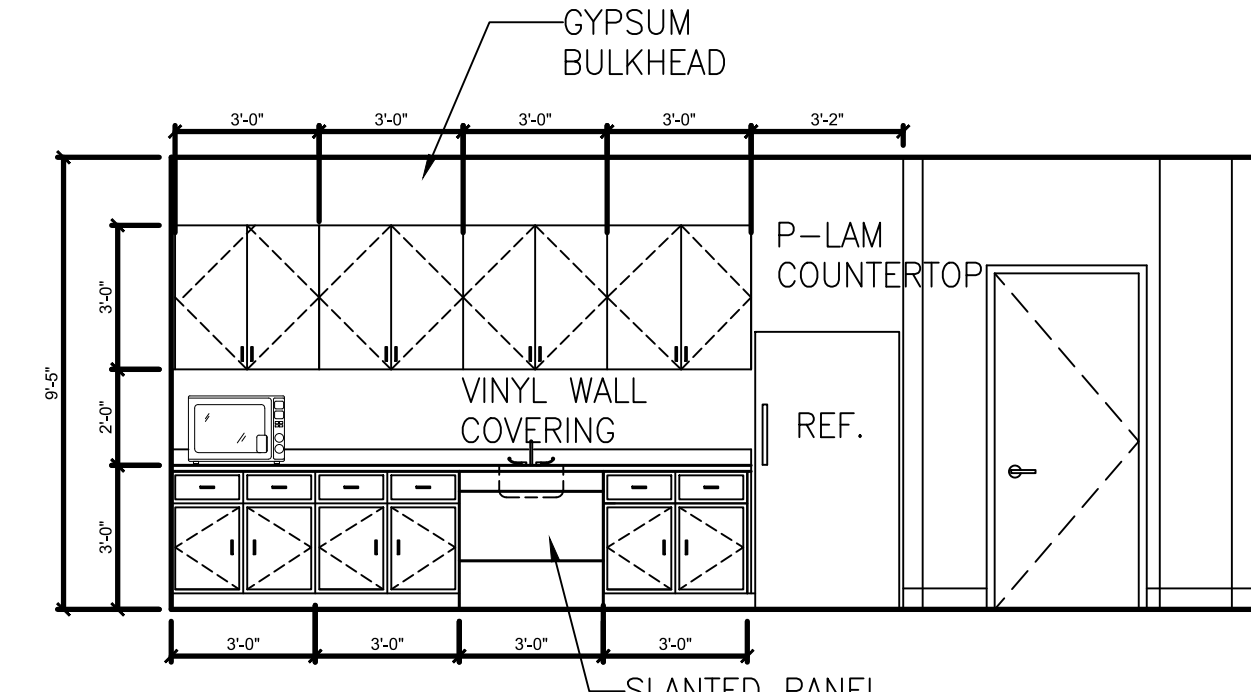
13 Private Resident Room (Typ.)
 Scale: 1/4"=1'-0"



14 Work Stations A213
 Scale: 1/4"=1'-0"



18 Staff Lounge A309 & A209 (South)
 Scale: 1/4"=1'-0"



19 Staff Lounge A319 (South) & A309 & A209 (East)
 Scale: 1/4"=1'-0"

- GENERAL CASEWORK NOTES:**
- REFER TO ROOM FINISH AND MATERIAL SCHEDULES FOR PLASTIC LAMINATE SELECTIONS.
 - PROVIDE BASE AS LISTED IN ROOM FINISH SCHEDULE, AT ALL CASEWORK.
 - PROVIDE GROMMETS IN CASEWORK COUNTERTOPS WHEREVER ELECTRICAL OR COMMUNICATIONS OUTLETS ARE INDICATED IN KNEE SPACE BELOW. VERIFY LOCATION IN FIELD.
 - ROUND ALL OUTSIDE CORNERS OF COUNTERTOPS WITH MINIMUM 1/2" RADIUS, UNLESS NOTED OTHERWISE.
 - PROVIDE 1/2" MINIMUM FILLERS AT PERPENDICULAR JUNCTION CP ALL CABINETS AND AT PERPENDICULAR JUNCTURE WITH ADJACENT WALL(S), UNLESS NOTED OTHERWISE. SCRIBE ALL EDGES AND APPLY SEALANT TO JOINTS.
 - PROVIDE EXTERIOR GRADE PLYWOOD SUBSURFACE AT ALL COUNTERTOP SINKS.
 - PROVIDE SEALANT BETWEEN BACKSPASH/SIDESPLASH OR COUNTERTOP AND WALL.
 - ALL SHELVING IN CASEWORK TO BE ADJUSTABLE, UNLESS NOTED OTHERWISE.
 - ALL FILE CABINETS TO ACCOMMODATE PENDAFLEX FILE SYSTEM.
 - PROVIDE KEYBOARD TRAYS WHERE INDICATED ON THE DRAWINGS/DETAILS. INCLUDE SLIDER PLATFORM CSP-5103 DM-231 IQ MECHANISM, OR APPROVED EQUAL.
 - PROVIDE PENCIL DRAWERS WHERE INDICATED ON THE DRAWINGS. INCLUDE HAFLE H4-423SS350, OR APPROVED EQUAL.

Revisions	Date
ADDITIONAL INFORMATION PROVIDED FOR LOCKERS.	11/23/2016

CONSULTANTS:

Allus Architectural Studios, Inc. 12925 W. Dodge Road Omaha, Nebraska 68154	Aventi Environmental Group 308 North Water Street Suite 650 Milwaukee, WI 53202	Specialized Engineering Solutions, Inc. 10360 Ellison Circle Omaha, Nebraska 68134
American Structurespoint, Inc. 7260 Shadeland Station Indianapolis, IN 46256	Middleton Construction Consulting 330 East Kilbourn Ave Suite 565 Milwaukee, WI 53202	

ARCHITECT/ENGINEERS:

13100 watertown plank road suite 200 elm grove, wi 53122

nagel architects

Nagel Architects Project Number: 140701

Drawing Title	INTERIOR ELEVATIONS
Approved Project Director	

Project Title	RENOVATE 3 WARDS OF CLC IN BLDG 134
Location	Captain James A. Lovell FHCC, North Chicago, IL
Date	June 1, 2016
Checked	SAM
Drawn	JTH

Project Number	556-14-011
Building Number	BLDG 134
Wards	WARDS 2C, 3A, 3B, 3C
Drawing Number	A408
Dwg. 040 of 146	

100% Bid Documents

Office of Construction and Facilities Management

Department of Veterans Affairs