

GENERAL NOTES:

- 1. REFER TO DRAWING HA-101 FOR ASBESTOS ABATEMENT NOTES.
- 2. THE MAJORITY OF THE EXPOSED ASBESTOS PIPE INSULATION HAS BEEN REMOVED. ASBESTOS CONTAINING MATERIAL (ACM) AND PIPE INSULATION IS ASSUMED TO EXIST BEHIND WALLS AND IN ENCLOSED PLUMBING CHASES.
- 3. ALL ACM EXPOSED DURING WORK UNDER THIS CONTRACT SHALL BE REMOVED.
- 4. SOME EXPOSED ACM REMAINS ABOVE THE CEILING GRID OR HARD CEILING AND MUST BE REMOVED.
- 5. FILL ALL HOLE PENETRATIONS IN FLOORS, CEILING, AND RATED WALLS THAT REMAIN WITH APPROVED FIRE CAULK.
- 6. OCCUPIED FLOOR REQUIRING PHASING AND COORDINATION OF ALL DEMOLITION AND NEW WORK.
- 7. LIMITED ACCESS FOR ALL WORK. SCHEDULE ALL WORK SO NO MORE THAN 2 ROOMS ARE DISTURBED AT ANY TIME.
- 8. AFTER NORMAL BUSINESS HOURS FOR THE FACILITY IS REQUIRED IN THESE AREAS, CONSTRUCTION WORK TIME SHALL BE FROM 5:00PM TO 5:00 AM MONDAY THROUGH FRIDAY.
- 9. WEEKEND WORK MUST BE APPROVED AND SCHEDULED WITH THE FACILITY.

ASBESTOS DRAWING NOTES:

- ① REMOVE ASBESTOS MATERIALS AS REQUIRED, HARD FITTINGS ON PIPES TO RADIATORS ON FLOOR 2
- ② REMOVE ASBESTOS MATERIALS AS REQUIRED; STEAM PIPE RISER LOCATION

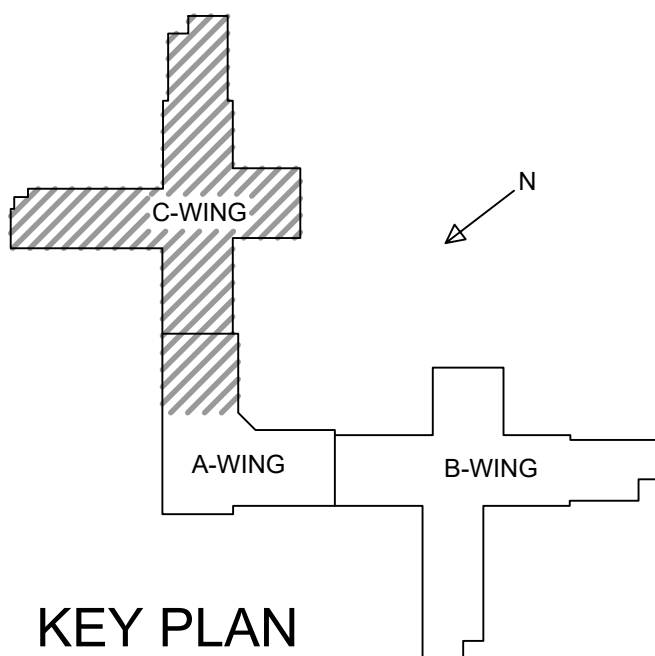
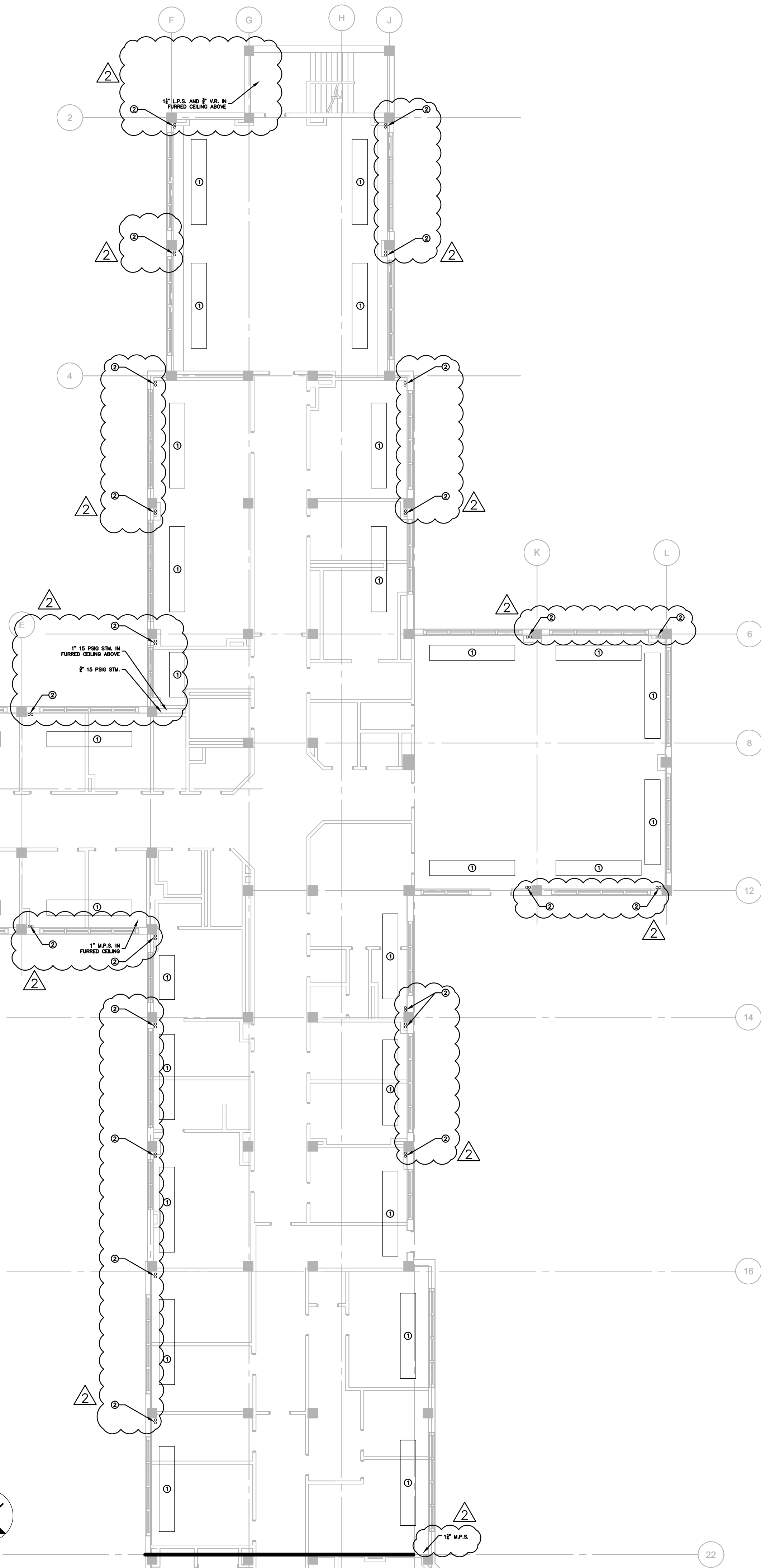
ESTIMATED REMOVAL QUANTITIES:

- 1. SINKS/LAVATORIES – FOUR (4) FITTINGS AT EACH LOCATION.
- 2. TOILETS – TWO (2) FITTINGS AT EACH LOCATION.
- 3. URINALS – TWO (2) FITTINGS AT EACH LOCATION.
- 4. RADIATORS – NINE (9) FITTINGS EXPOSED AND CONCEALED AT EACH RADIATOR.
- 5. STEAM AND CONDENSATE PIPING – SIX (6) FITTINGS AT EACH RADIATOR.
- 6. STEAM AND CONDENSATE PIPING – THIRTY (30) LINEAL FEET FOR EACH STEAM AND CONDENSATE PIPE CONCEALED WITHIN THE WALL OR CHASE.
- 7. CLINICAL SINK, BEDPAN WASH AND LAUNDRY SUPPLIES – TWO (2) FITTINGS AT EACH FIXTURE AND LOCATION.
- 8. SHOWER, BATHTUB, JANITOR SINK – FOUR (4) FITTINGS AT EACH FIXTURE LOCATION.
- 9. DRINKING FOUNTAIN – ONE (1) AT EACH LOCATION.
- 10. MIXING VALVE – SIX (6) FITTINGS AT EACH LOCATION.

Fixture	Number of Fittings
Sinks/Lavatories	0
Toilets/Urinals	0
Radiators	576
Strm & Conds. Piping	384
Laundry Rm Fixtures	0
Bedpan Wash	0
Shower/Bathtub	0
Janitor/HAC Sink	0
Drinking Fountain	0

Steam Piping to Radiators	1,346 LF
---------------------------	----------

1 PART FIRST FLOOR PLAN - ASBESTOS ABATEMENT
HA-100 SCALE: 3/32" = 1'-0"



Revisions	Date
1/20/2017	

CONSULTANTS:

Altus Architectural Studios, Inc.
12925 W. Dodge Road
Omaha, Nebraska 68154

Avanti Environmental Group
309 North Water Street
Suite 650
Milwaukee, WI 53202

Specialized Engineering Solutions, Inc.
10360 Ellison Circle
Omaha, Nebraska 68134

American Structurespoint, Inc.
7260 Shadeland Station
Indianapolis, IN 46256

Middleton Construction Consulting
330 East Kilbourn Ave
Suite 565
Milwaukee, WI 53202

ARCHITECT/ENGINEERS:

13100 watertown plank road
suite 200
elm grove, wi 53122

nagel
architects

Nagel Architects Project Number: 140701

Drawing Title
PART FIRST FLOOR PLAN
ASBESTOS ABATEMENT
DOMESTIC WATER PIPING & MECHANICAL

Approved: Project Director

-
-
-

Project Title
RENOVATE 3 WARDS OF CLC IN
BLDG 134

Location
Captain James A. Lovell FHCC, North Chicago, IL

Date
June 1, 2016

Checked

Drawn

Project Number
556-14-011

Building Number
BLDG 134,
WARDS 2C, 3A, 3B, 3C

Drawing Number

HA-100

Dwg 005 of 146

100% Bid Documents

Office of
Construction
and Facilities
Management

Department of
Veterans Affairs