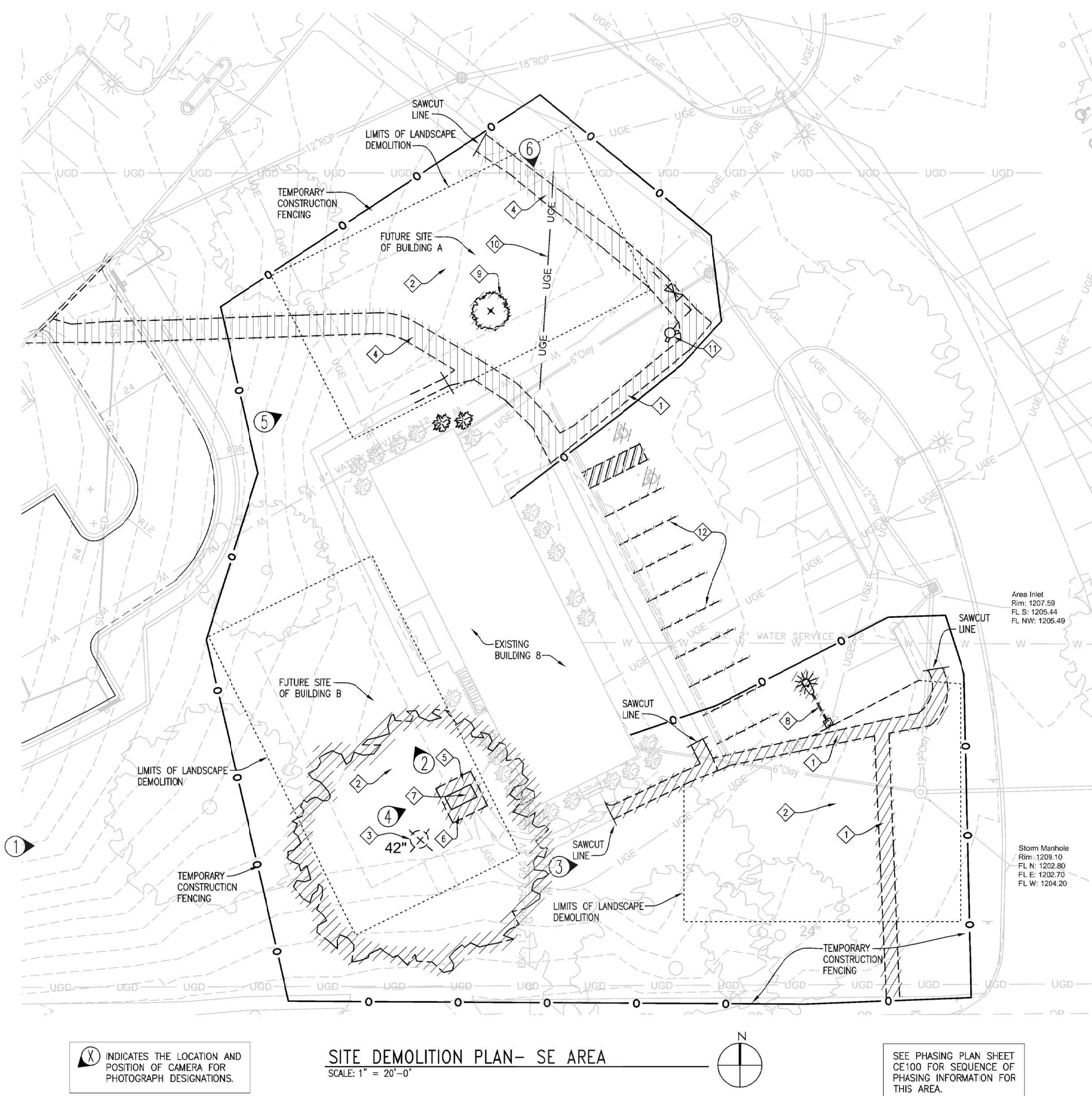


three eighths inch = one foot
one eighth inch = one foot
one quarter inch = one foot
three eighths inch = one foot
one half inch = one foot
one inch = one foot
one and one half inches = one foot
two inches = one foot
three inches = one foot



PHASE ONE-DEMOLITION KEY NOTES:

- 1 REMOVE EXISTING SIDEWALK SECTION AS SHOWN.
- 2 REMOVE EXISTING LANDSCAPING AND SOD IN DESIGNATED AREA COMPLETE.
- 3 REMOVE EXISTING LARGE TREE IN IT'S ENTIRETY.
- 4 REMOVE EXISTING CONCRETE SIDEWALK TO LIMITS SHOWN OR AS REQUIRED.
- 5 REMOVE EXISTING CONCRETE PAD COMPLETE.
- 6 REMOVE AND SALVAGE EXISTING TRASH CONTAINER AND RE-LOCATE AS SHOWN ON NEW PLANS.
- 7 REMOVE AND SALVAGE EXISTING PICNIC TABLE AND RE-LOCATE AS SHOWN ON NEW PLANS.
- 8 REMOVE EXISTING LIGHT POLE AND FIXTURE AND SALVAGE FOR RE-INSTALLATION AS SHOWN ON NEW PLANS.
- 9 REMOVE EXISTING SMALL TREE IN IT'S ENTIRETY. THIS TREE IS SMALL ENOUGH TO BE REMOVED FROM IT'S LOCATION AND RE-LOCATED AS DIRECTED BY THE COR/ VA OMAHA.
- 10 REMOVE EXISTING ELECTRICAL LINE AND RE-LOCATE TO NEW LOCATION. SEE SHEET E5102.
- 11 REMOVE EXISTING FIRE HYDRANT AND ASSOCIATED PIPING SHOWN. SALVAGE HYDRANT FOR RE-INSTALLATION. SEE SHEET C5102.
- 12 REMOVE EXISTING PAINT STRIPING IN NOTED AREA.



1 EXISTING BUILDING "8" LOOKING EAST
SCALE: NONE



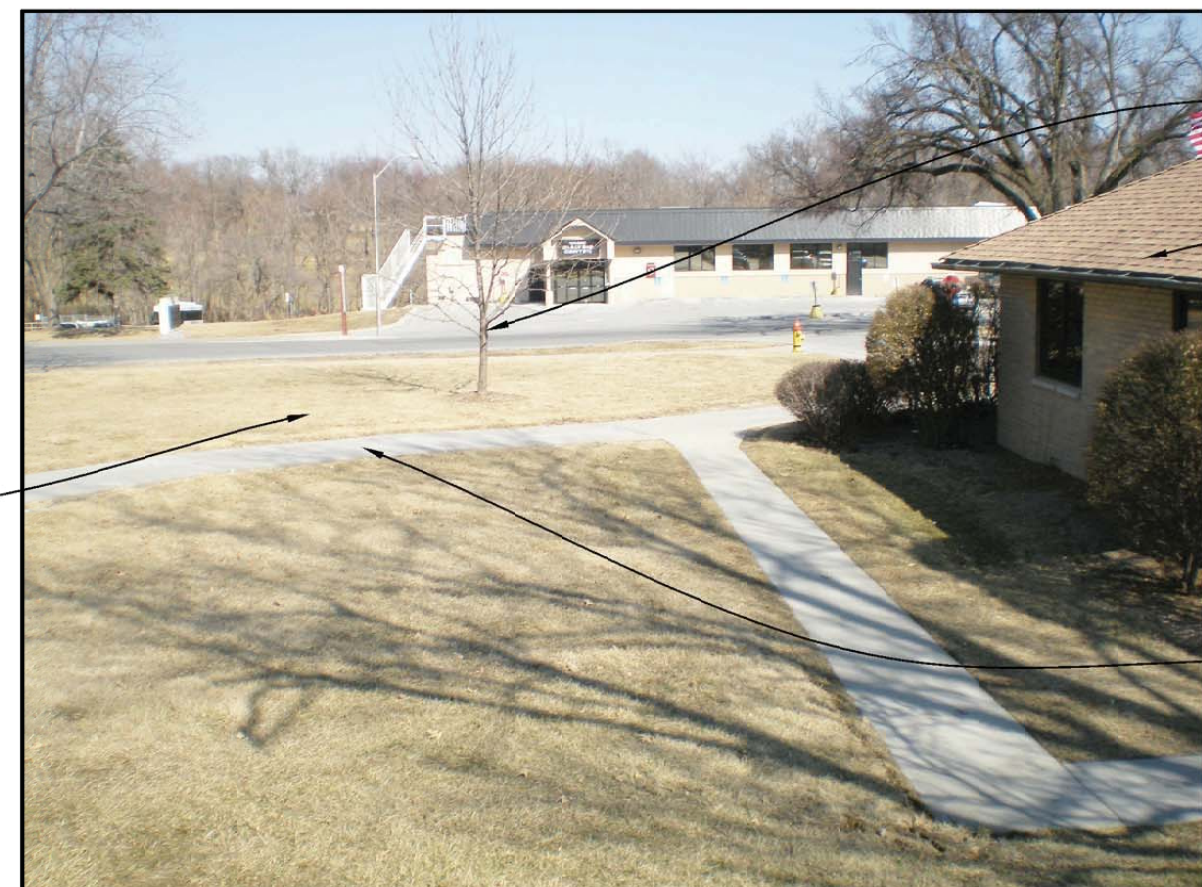
2 EXISTING BUILDING "8" LOOKING NORTHWEST
SCALE: NONE



3 EXISTING SITE LOOKING EAST ALONG CENTER STREET
SCALE: NONE



4 EXISTING BUILDING "8" PICNIC TABLE PAD
SCALE: NONE



5 EXISTING BUILDING "8" LOOKING EAST-NORTH SIDE
SCALE: NONE



6 EXISTING BUILDING "8" LOOKING SOUTH
SCALE: NONE

CONSULTANTS:		ARCHITECT/ENGINEERS:		Architect Project No. 003-10121-017	Drawing Title SITE DEMOLITION PLAN- EXISTING SE AREA AND PHOTOS		Project Title FISHER HOUSE SITE PREP		Project Number 636-CSI-100		Office of Construction and Facilities Management VA U.S. Department of Veterans Affairs
		LEO A DAILY PLANNING ARCHITECTURE ENGINEERING INTERIORS EST. 1955			Approved Project Director Name		Location OMAHA, NE		Building Number A, B, 3		
		8600 Indian Hills Drive Omaha, NE 68114-4039 USA Tel 402-391-8111 Fax 402-391-8564			Date October 18, 2016		Checked AAH		Drawing Number CD101		
Revisions		Date					Drawn JMK				