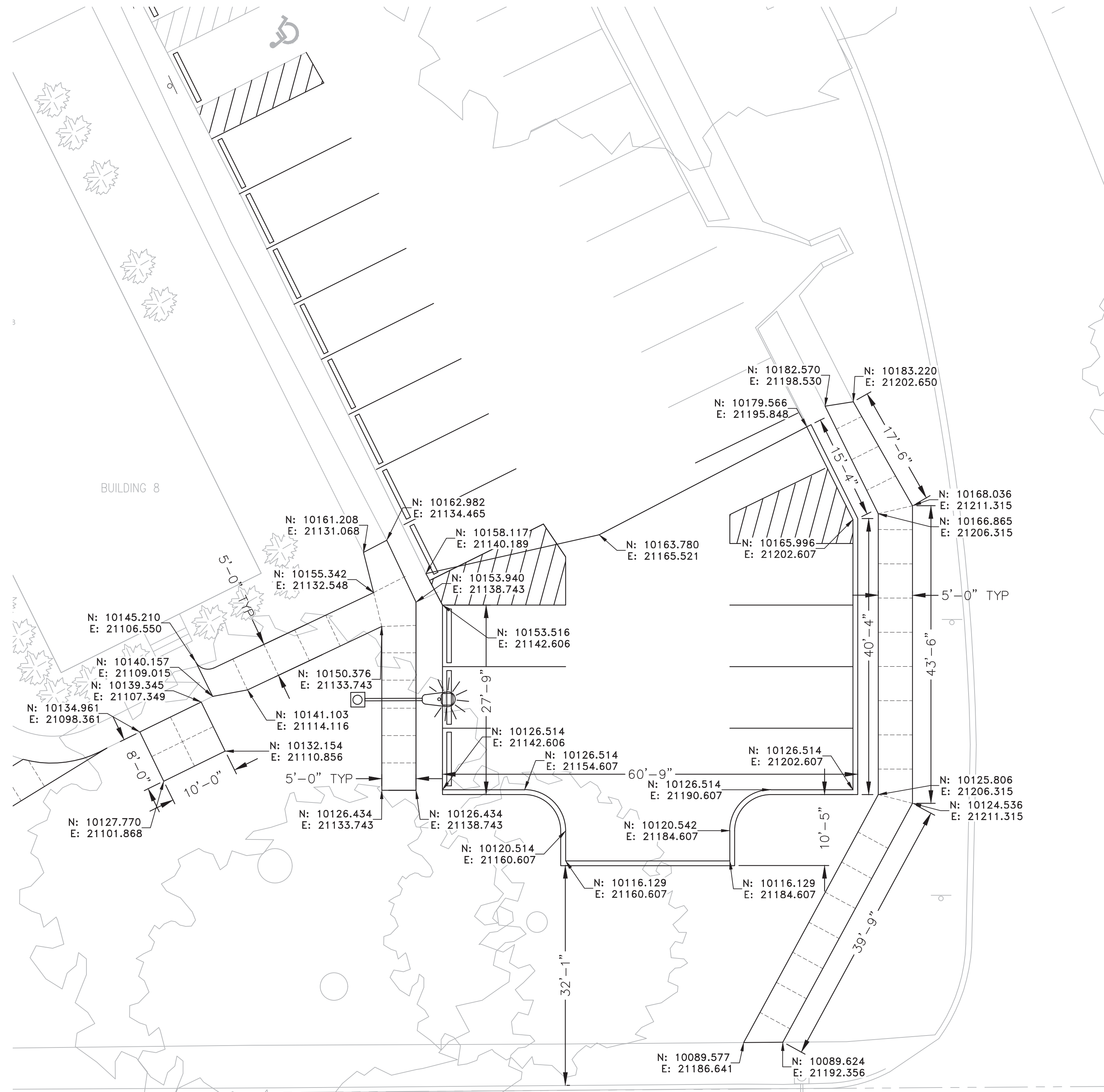


- KEYED NOTES:**
- 1 NEW ASPHALT FOR EXTENDED PARKING LOT, TYP. SEE DETAIL 1/C502.
  - 2 RE-LOCATED LIGHT POLE AND FIXTURE SEE DETAIL 2/C503. SEE ELECTRICAL DRAWINGS FOR DETAILS.
  - 3 NEW SECTION OF CONCRETE SIDEWALK, TYP. SEE DETAIL 3, 8/C501.
  - 4 RELOCATION OF BUILDING "A". TOP OF FOOTING ELEVATION 1213.5.
  - 5 RELOCATION OF BUILDING "B". TOP OF FOOTING ELEVATION 1213.
  - 6 NEW PARKING LOT STRIPING AND SIGNAGE, TYP. SEE DETAIL 1, 3, & 4/C503.
  - 7 NEW RAMP, STAIRS, AND RAILING. SEE ARCHITECTURAL DRAWINGS FOR DETAILS.
  - 8 LOCATION OF RE-LOCATED FIRE HYDRANT & VALVE, SEE DETAIL 2 & 3/C502.
  - 9 NEW PIPE BOLLARDS, TYP. SEE DETAIL 6/C501.
  - 10 NEW CONCRETE CURB CURVE RADIUS: 5.50', CURVE LENGTH: 8.64'.
  - 11 APPROXIMATE LIMITS OF CONSTRUCTION.
  - 12 NEW PRECAST CONCRETE WHEEL STOP, TYP. SEE DETAIL 7 & 9/C501.
  - 13 NEW CONCRETE CURB, TYP. TAPER CURB TO PAVEMENT AT EACH END. SEE DETAIL 7 & 9/C501.
  - 14 NEW CONCRETE PAD, RELOCATED PICNIC TABLE & TRASH BIN. SEE SHEET CD101 FOR ORIGINAL LOCATION. SEE DETAIL 3 & 10/C501.
  - 15 CURVE RADIUS: 6.49', CURVE LENGTH: 8.50'.
  - 16 NEW CONCRETE CURB (TYP), FIELD VERIFY LIMITS AND ELEVATION. SEE DETAIL 7/C501.
- NOTES:**
1. LIGHT LINES INDICATE EXISTING CONDITIONS, HEAVY LINES INDICATE NEW WORK.
  2. PROVIDE A SMOOTH TRANSITION FROM NEW PAVEMENT TO EXISTING PAVEMENT. REPAIR ANY SUNKEN/HEAVED PAVEMENT DESIGNATED FOR REPLACEMENT.
  3. ALL OPEN AREAS ARE TO RECEIVE GRASS SOD. DEDUCT ALTERNATE #1 - INSTALL GRASS SEED IN LIEU OF SOD.
  4. ALL COORDINATES SHOWN TO FRONT OF CURB.

|              |  |   |  |
|--------------|--|---|--|
| CONSULTANTS: |  | ARCHITECT/ENGINEERS:  |  |
|              |  | LEO A DAILY   |  |
|              |  | PLANNING<br>ARCHITECTURE<br>ENGINEERING<br>INTERIORS  |  |
|              |  | EST. 1915   |  |
|              |  | 8600 Indian Hills Drive<br>Omaha, NE 68114-4039 USA<br>Tel 402-391-5111 Fax<br>402-391-8564 |  |
| Revisions:   |  | Architect Project No.<br>003-10121-017  |  |
| Date:        |  | Drawing Title<br>SITE LAYOUT PLAN-<br>SE AREA   |  |
|              |  | Approved Project Director   |  |
|              |  | Project Title<br>FISHER HOUSE<br>SITE PREP  |  |
|              |  | Location<br>OMAHA, NE   |  |
|              |  | Project Number<br>636-CSI-100   |  |
|              |  | Building Number<br>A, B, 3  |  |
|              |  | Drawing Number<br>CS102   |  |
|              |  | Office of<br>Construction and<br>Facilities<br>Management                                   |  |
|              |  | VA U.S. Department<br>of Veterans Affairs   |  |



1 SITE LAYOUT PLAN DETAIL - A  
CS102 SCALE: 1" = 10'-0"