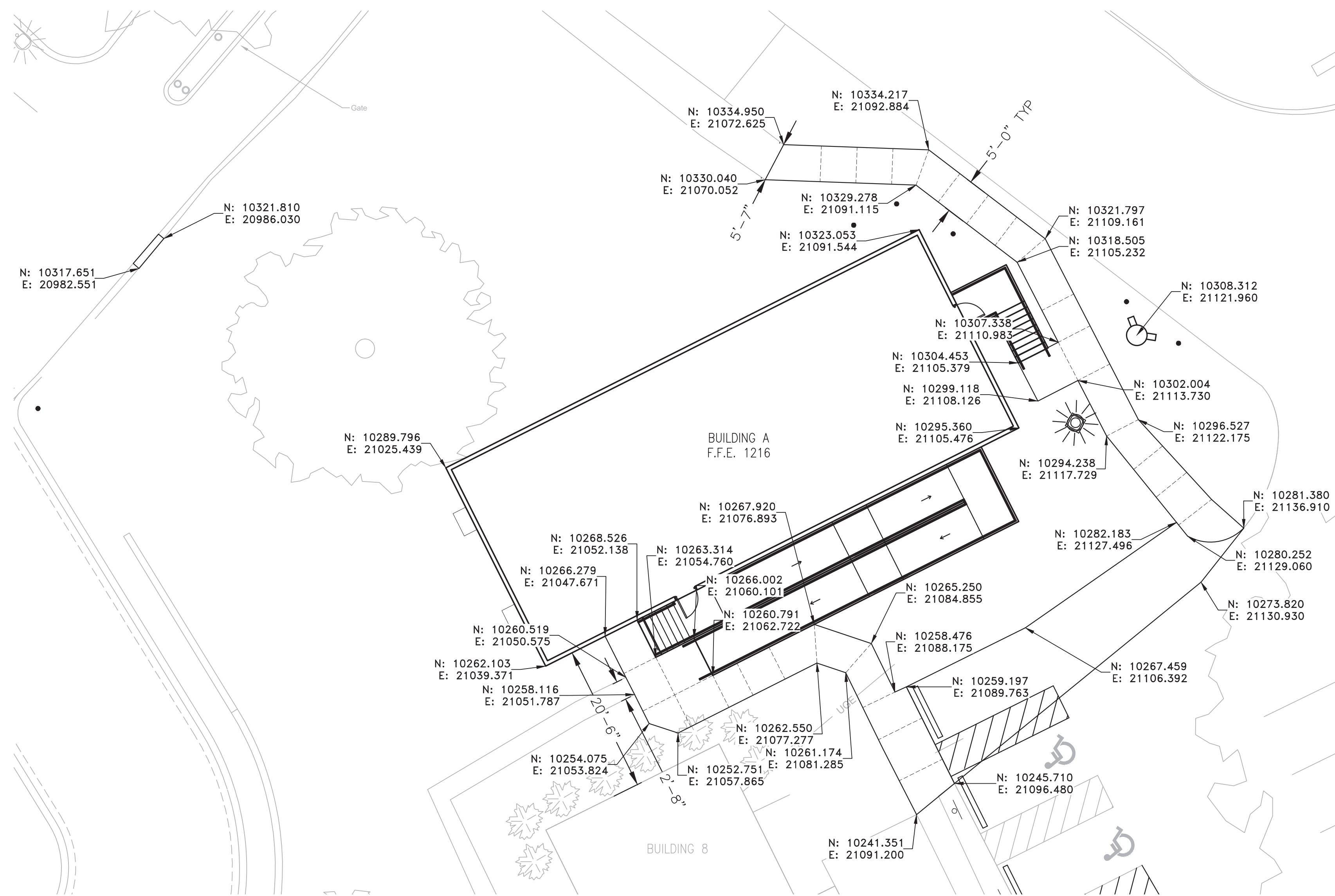
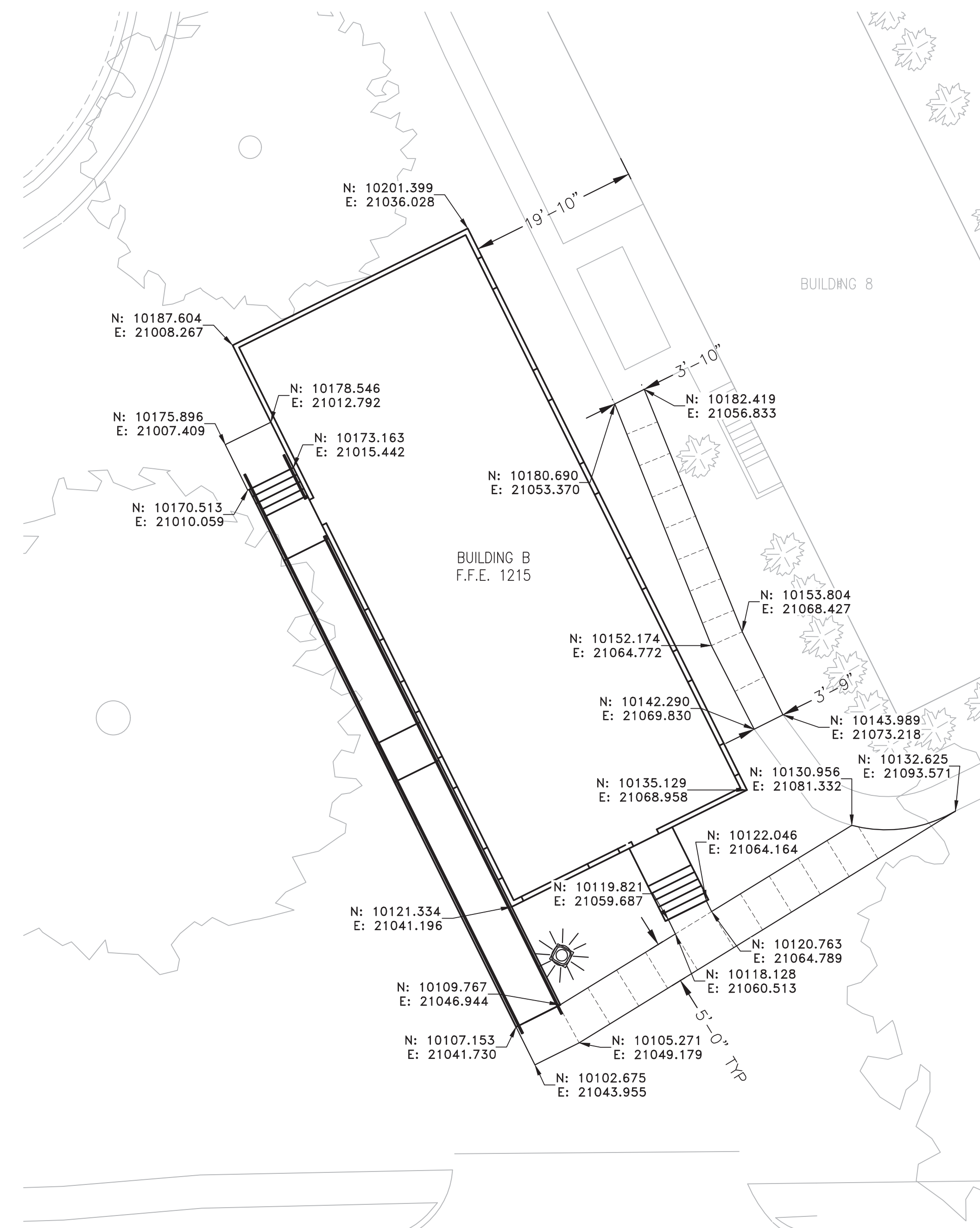


three inches = one foot  
one and one half inches = one foot  
one inch = one foot  
three quarters inch = one foot  
one half inch = one foot  
three eighths inch = one foot  
one quarter inch = one foot  
one eighth inch = one foot



2 PHASE TWO- SITE LAYOUT PLAN DETAIL - B  
CS102 SCALE: 1"= 10'-0"



3 PHASE TWO- SITE LAYOUT PLAN DETAIL - C  
CS102 SCALE: 1"= 10'-0"

NOTES:

1. LIGHT LINES INDICATE EXISTING CONDITIONS, HEAVY LINES INDICATE NEW WORK.
2. PROVIDE A SMOOTH TRANSITION FROM NEW PAVEMENT TO EXISTING PAVEMENT. REPAIR ANY SUNKEN/HEAVED PAVEMENT DESIGNATED FOR REPLACEMENT.

		CONSULTANTS:		ARCHITECT/ENGINEERS:		Architect Project No. 003-10121-017		Drawing Title SITE LAYOUT PLAN- SE AREA		Project Title FISHER HOUSE SITE PREP		Project Number 636-CSI-100		Office of Construction and Facilities Management  VA U.S. Department of Veterans Affairs			
				LEO A DAILY				Approved Project Director		Location OMAHA, NE		Building Number A, B, 3					
				EST. 1915						Date October 18, 2016		Checked AAH				Drawing Number CS103	
				8600 Indian Hills Drive Omaha, NE 68114-4039 USA Tel 402-391-5111 Fax 402-391-8564				Name		Drawn JMK							
Revisions		Date															