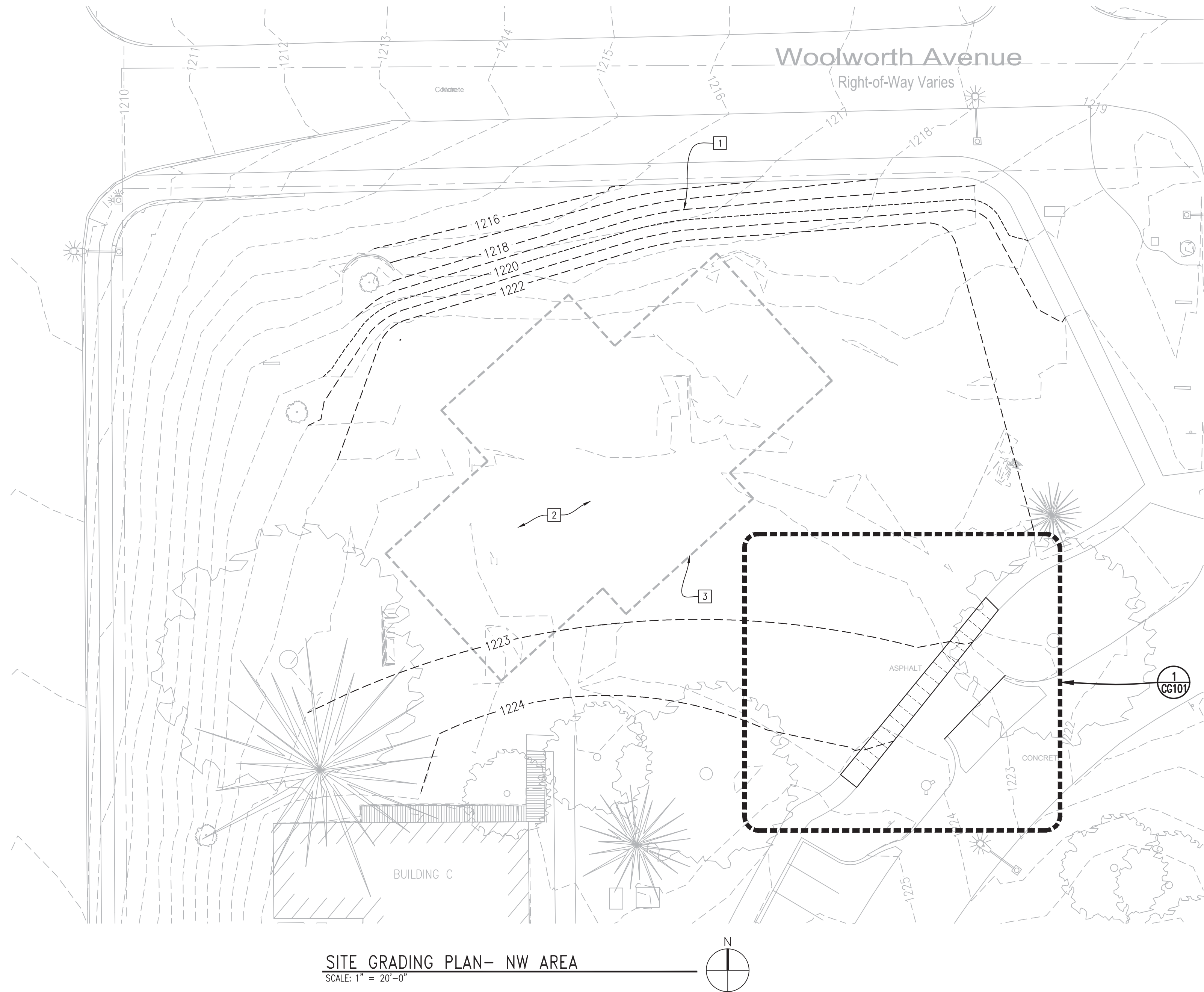


one eighth inch = one foot
0 4 8 16
one quarter inch = one foot
0 4 8
three eighths inch = one foot
0 4
one half inch = one foot
0 4
one inch = one foot
0 2 4
three quarters inch = one foot
0 2
one and one half inches = one foot
0 6
two inches = one foot
0 2
three inches = one foot
0 6

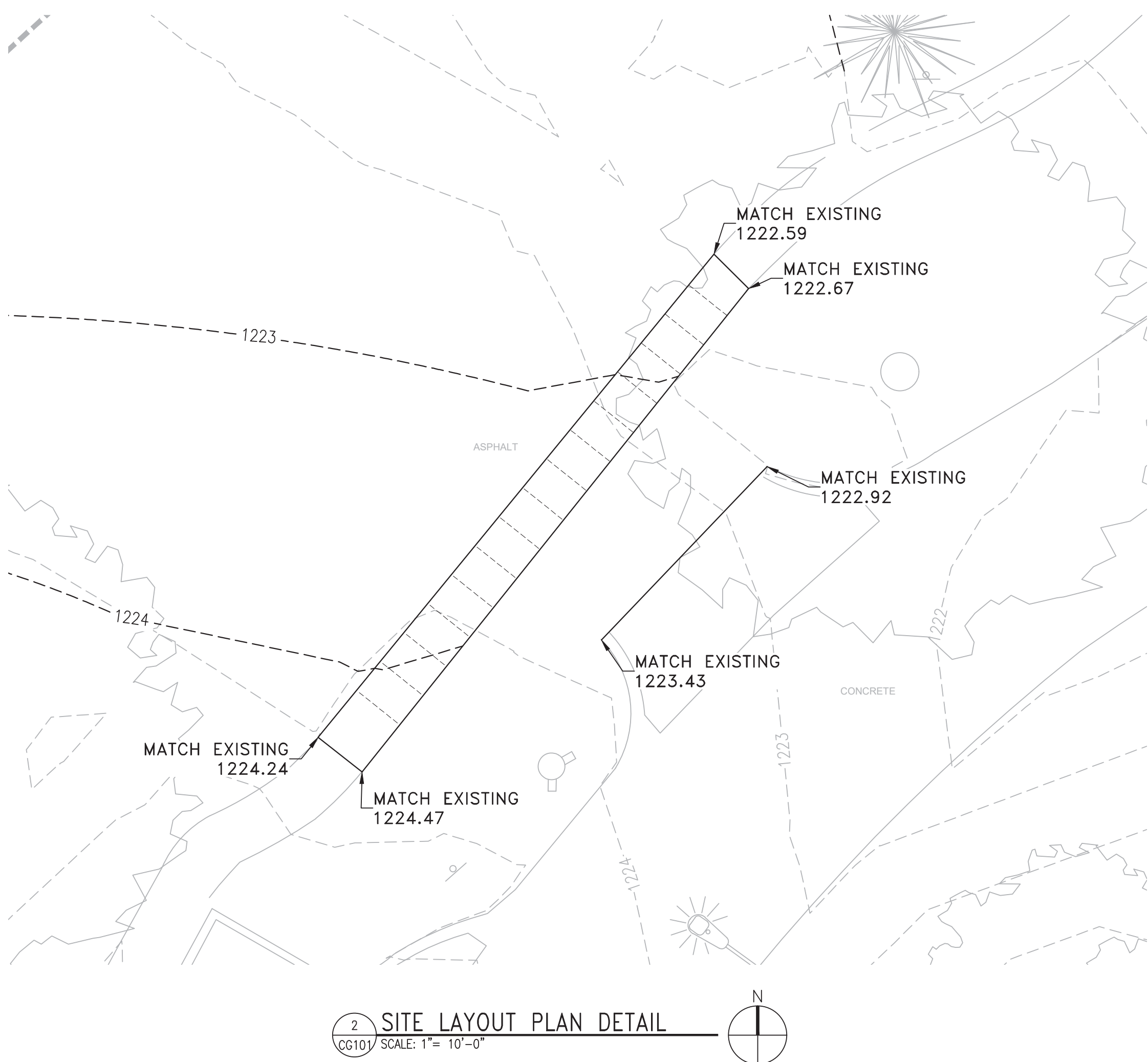


GRADING KEYED NOTES:

- 1 GRADE TO 3:1 SLOPE MAX.
- 2 GRADE TO DRAIN.
- 3 ESTIMATED LIMITS OF THE FUTURE BUILDING (N.I.C.).

NOTES:

- 1. LIGHT LINES INDICATE EXISTING CONDITIONS, HEAVY LINES INDICATE NEW WORK.
- 2. PROVIDE A SMOOTH TRANSITION FROM NEW PAVEMENT TO EXISTING PAVEMENT. REPAIR ANY SUNKEN/HEAVED PAVEMENT DESIGNATED FOR REPLACEMENT.



		CONSULTANTS:		ARCHITECT/ENGINEERS:		Architect Project No. 003-10121-017		Drawing Title SITE GRADING PLAN- NW AREA		Project Title FISHER HOUSE SITE PREP		Project Number 636-CSI-100		Office of Construction and Facilities Management	
				LEO A DAILY PLANNING ARCHITECTURE ENGINEERING INTERIORS EST. 1915				Approved Project Director		Location OMAHA, NE		Building Number A, B, 3			
				8600 Indian Hills Drive Omaha, NE 68114-4039 USA Tel 402-391-5111 Fax 402-391-8564				Name		Date October 18, 2016 R		Checked AAH			
Revisions		Date										Drawing Number CG101		VA U.S. Department of Veterans Affairs	