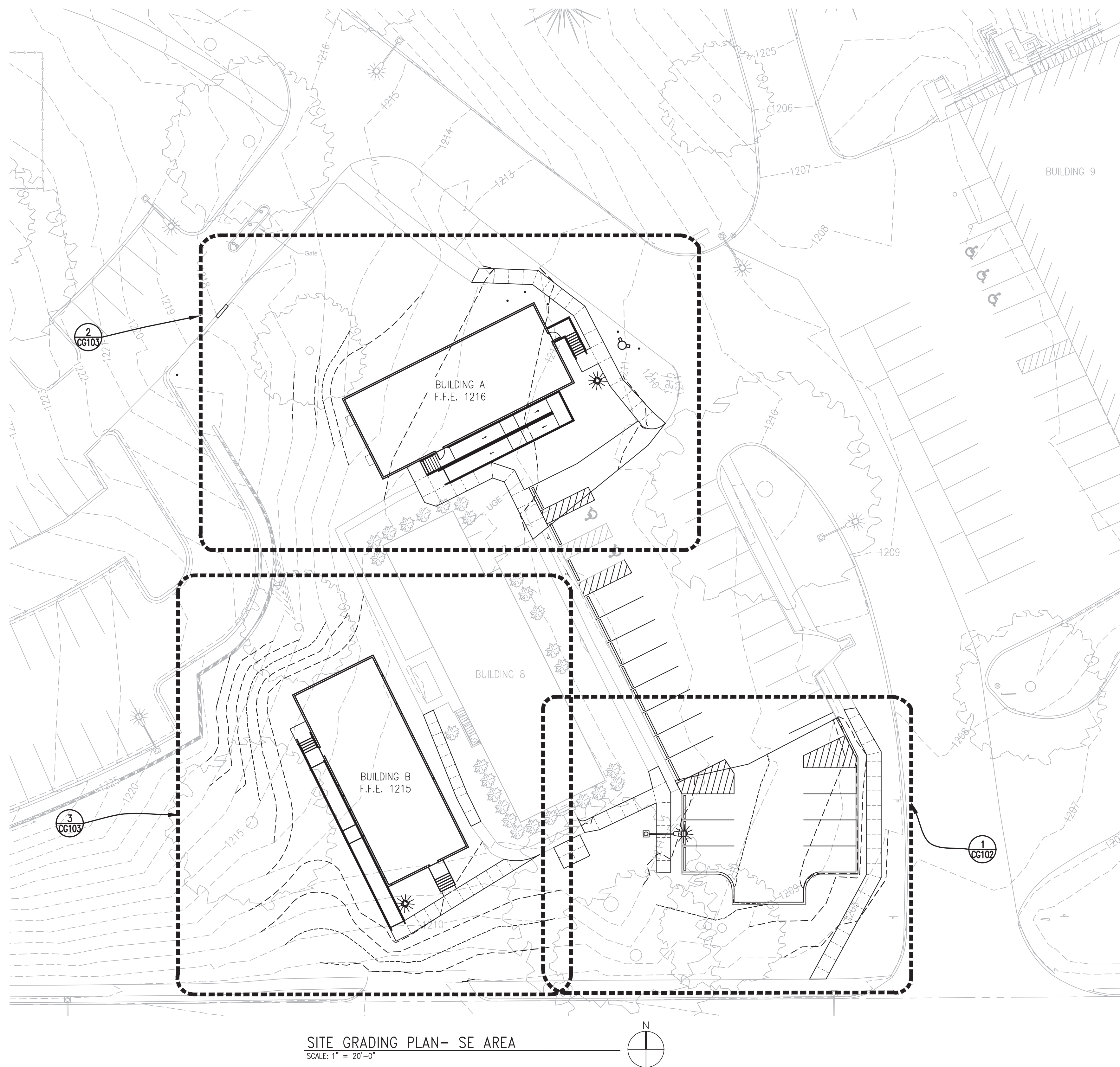
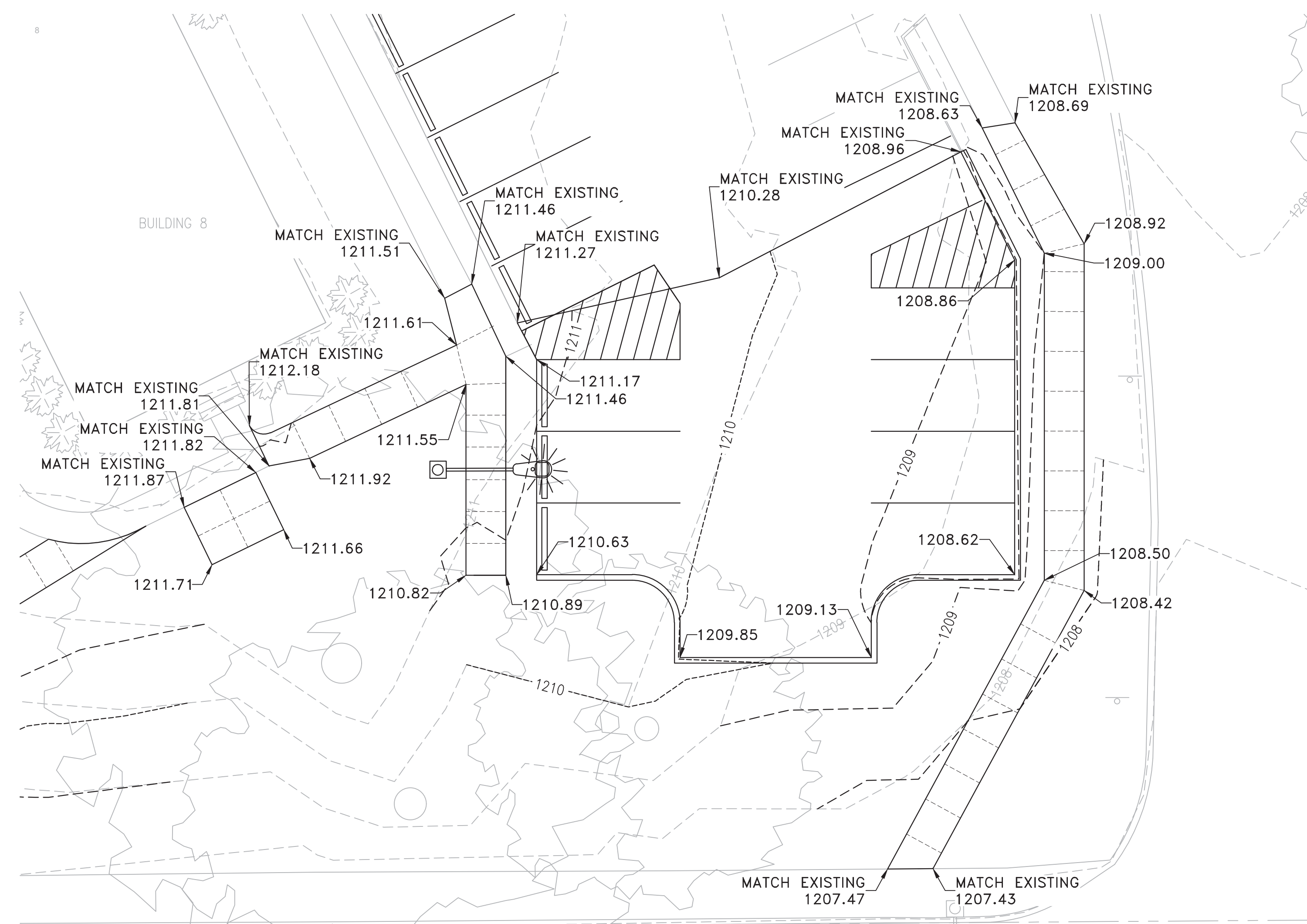


one eighth inch = one foot  
0 4 8 16  
one quarter inch = one foot  
0 4 8  
three eighths inch = one foot  
0 4 8  
one half inch = one foot  
0 4 8  
one inch = one foot  
0 6 12  
two inches = one foot  
0 6 12  
three inches = one foot  
0 6 12



NOTES:

1. LIGHT LINES INDICATE EXISTING CONDITIONS, HEAVY LINES INDICATE NEW WORK.
2. PROVIDE A SMOOTH TRANSITION FROM NEW PAVEMENT TO EXISTING PAVEMENT. REPAIR ANY SUNKEN/HEAVED PAVEMENT DESIGNATED FOR REPLACEMENT.
3. ALL ELEVATIONS SHOWN TO FRONT OF CURB.
4. GRADE TO 3:1 SLOPE MAX.



1 SITE GRADING PLAN DETAIL - A  
CG102 SCALE: 1" = 10'-0"

		CONSULTANTS:		ARCHITECT/ENGINEERS:		Architect Project No. 003-10121-017		Drawing Title SITE GRADING PLAN- SE AREA		Project Title FISHER HOUSE SITE PREP		Project Number 636-CSI-100		Office of Construction and Facilities Management					
				LEO A DAILY PLANNING ARCHITECTURE ENGINEERING INTERIORS EST. 1915 8600 Indian Hills Drive Omaha, NE 68114-4039 USA Tel 402-391-3111 Fax 402-391-8564				Approved Project Director		Location OMAHA, NE		Building Number A, B, 3							
Revisions		Date								Date October 18, 2016		Checked AAH		Drawn JMK		Drawing Number CG102		VA U.S. Department of Veterans Affairs	