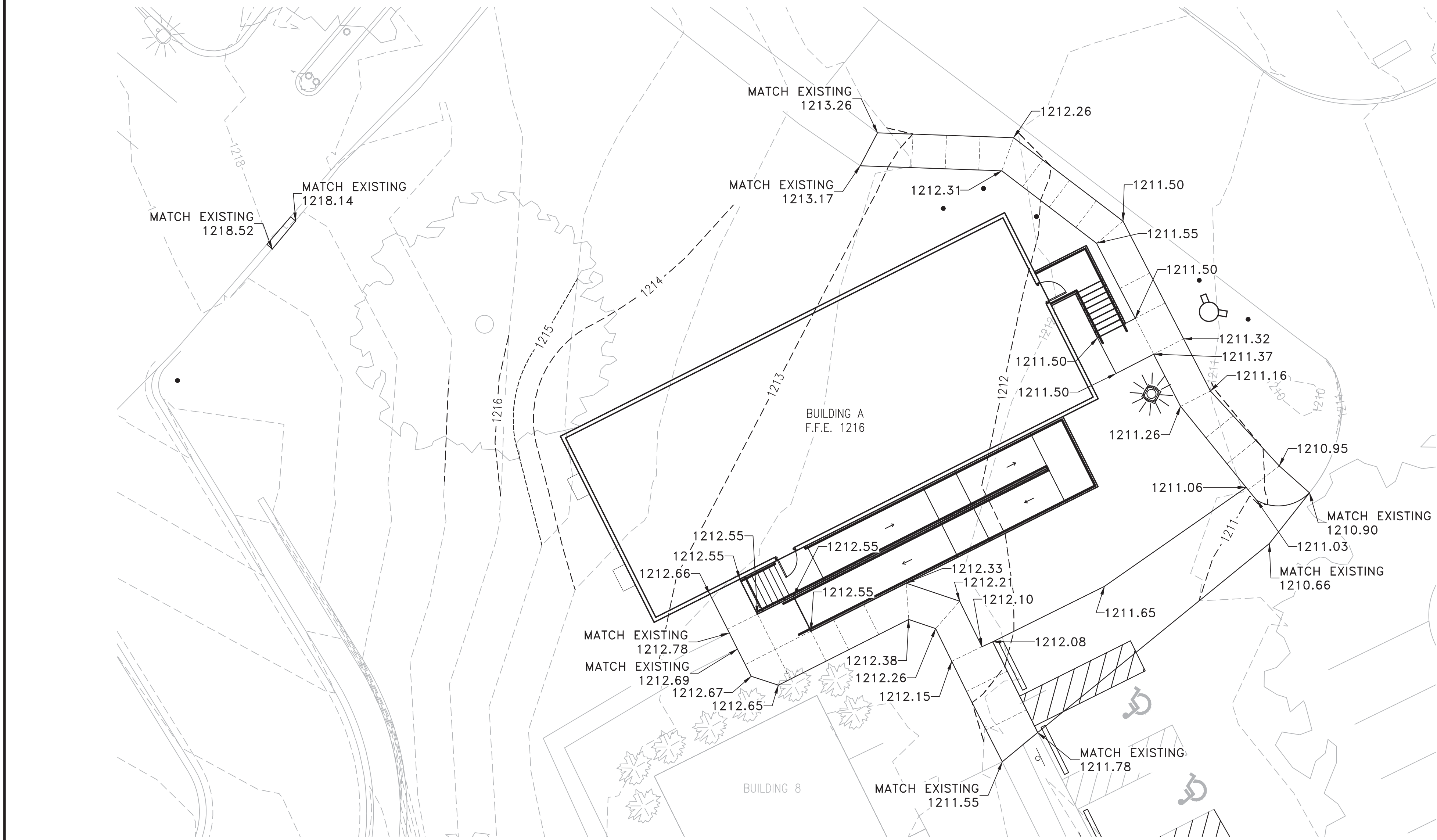
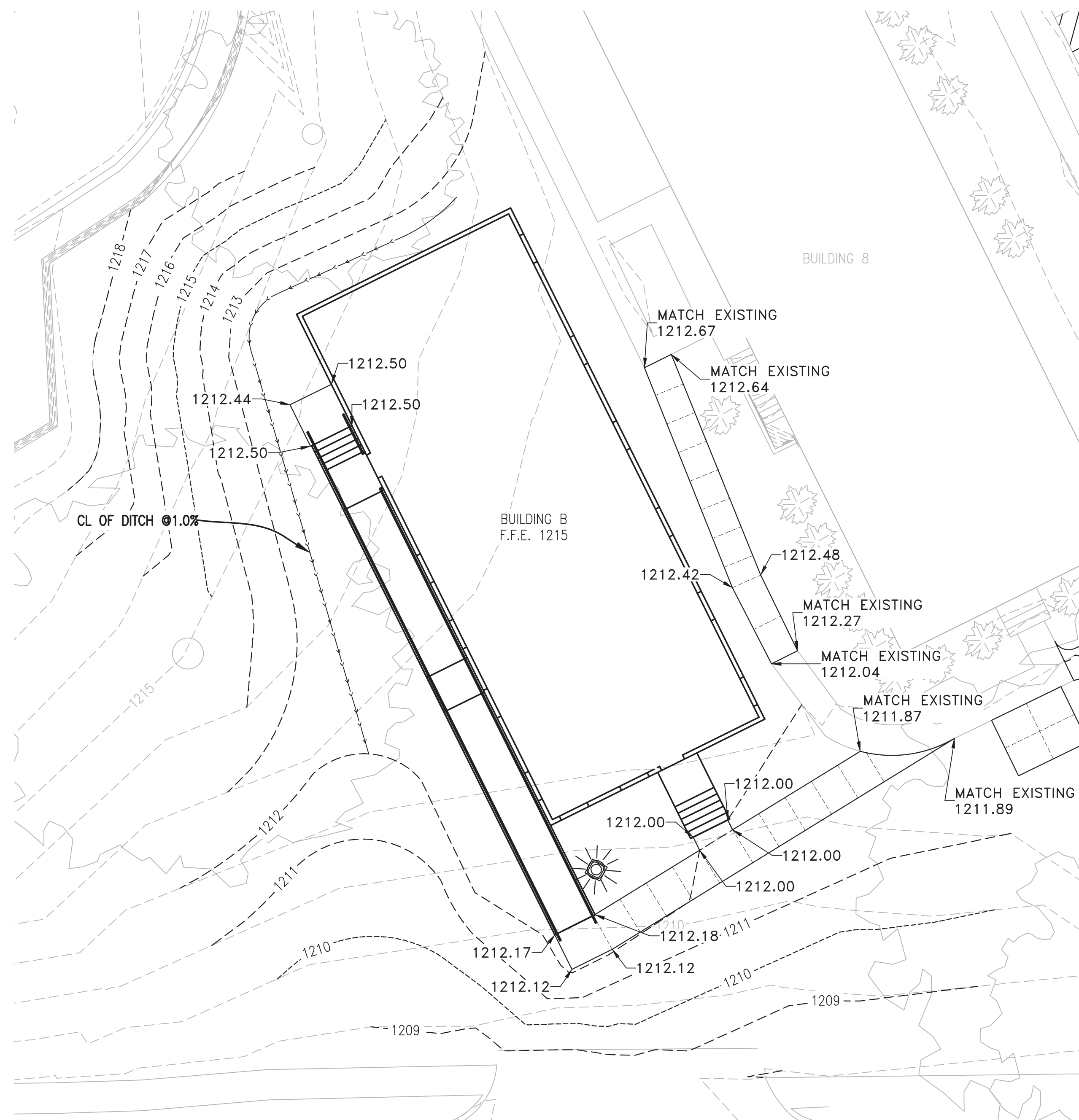


three inches = one foot  
one and one half inches = one foot  
one inch = one foot  
three quarters inch = one foot  
one half inch = one foot  
three eighths inch = one foot  
one quarter inch = one foot  
one eighth inch = one foot



2 PHASE TWO- SITE LAYOUT PLAN DETAIL - B  
CG101 SCALE: 1" = 10'-0"



3 PHASE TWO- SITE LAYOUT PLAN DETAIL - C  
CG101 SCALE: 1" = 10'-0"

NOTES:

1. LIGHT LINES INDICATE EXISTING CONDITIONS, HEAVY LINES INDICATE NEW WORK.
2. PROVIDE A SMOOTH TRANSITION FROM NEW PAVEMENT TO EXISTING PAVEMENT. REPAIR ANY SUNKEN/HEAVED PAVEMENT DESIGNATED FOR REPLACEMENT.

<b>Revisions</b>		<b>CONSULTANTS:</b>		<b>ARCHITECT/ENGINEERS:</b>		<b>Architect Project No.</b> 003-10121-017		<b>Drawing Title</b> SITE GRADING PLAN- SE AREA		<b>Project Title</b> FISHER HOUSE SITE PREP		<b>Project Number</b> 636-CSI-100		<b>Office of Construction and Facilities Management</b>  VA U.S. Department of Veterans Affairs	
				<b>LEO A DALY</b> PLANNING ARCHITECTURE ENGINEERING INTERIORS EST. 1915 8600 Indian Hills Drive Omaha, NE 68114-4039 USA Tel 402-391-5111 Fax 402-391-8564		<b>Approved Project Director</b>  Name		<b>Location</b> OMAHA, NE		<b>Building Number</b> A, B, 3		<b>Drawing Number</b> CG103			
<b>Date</b>								<b>Date</b> October 18, 2016		<b>Checked</b> AAH		<b>Drawn</b> JMK			