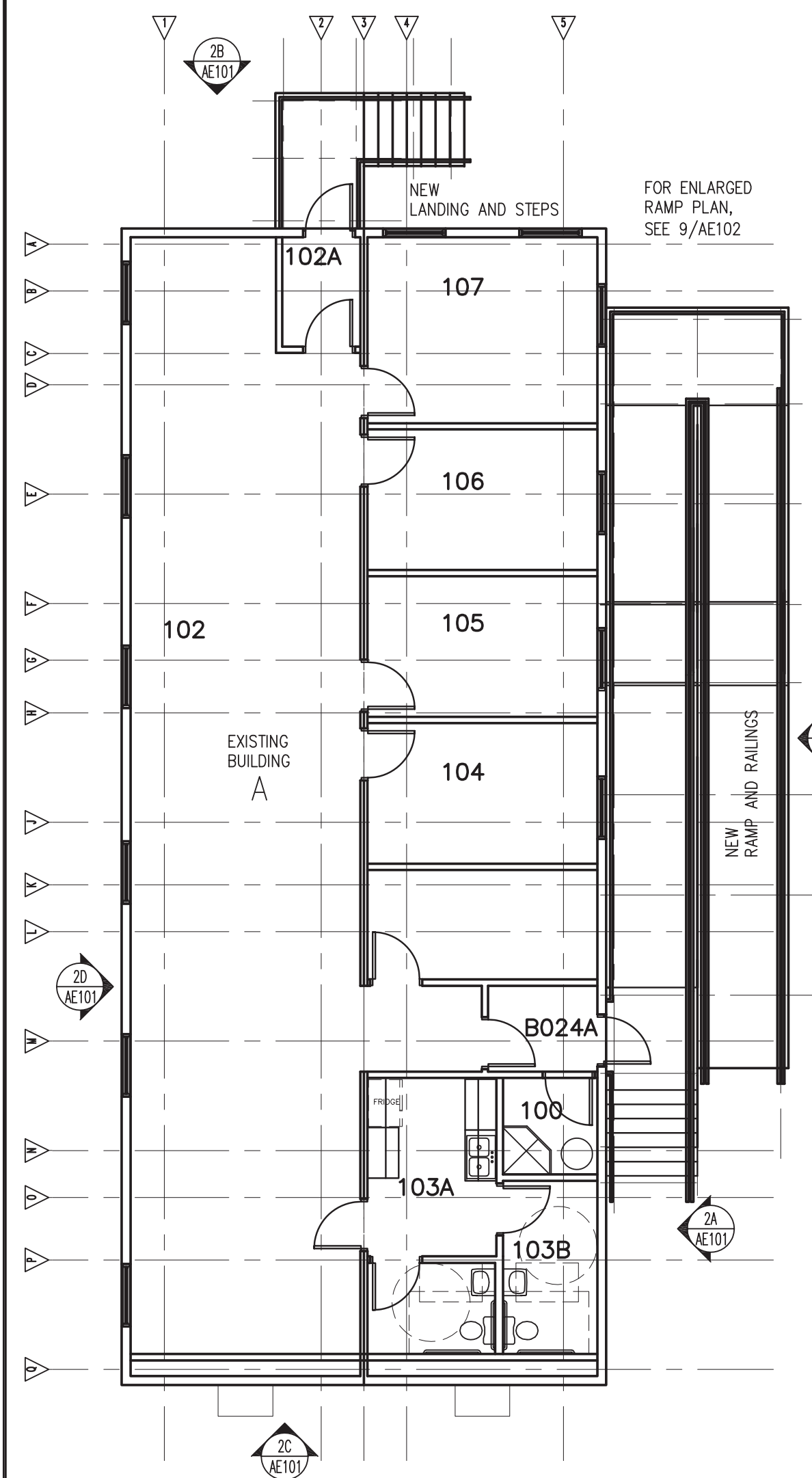
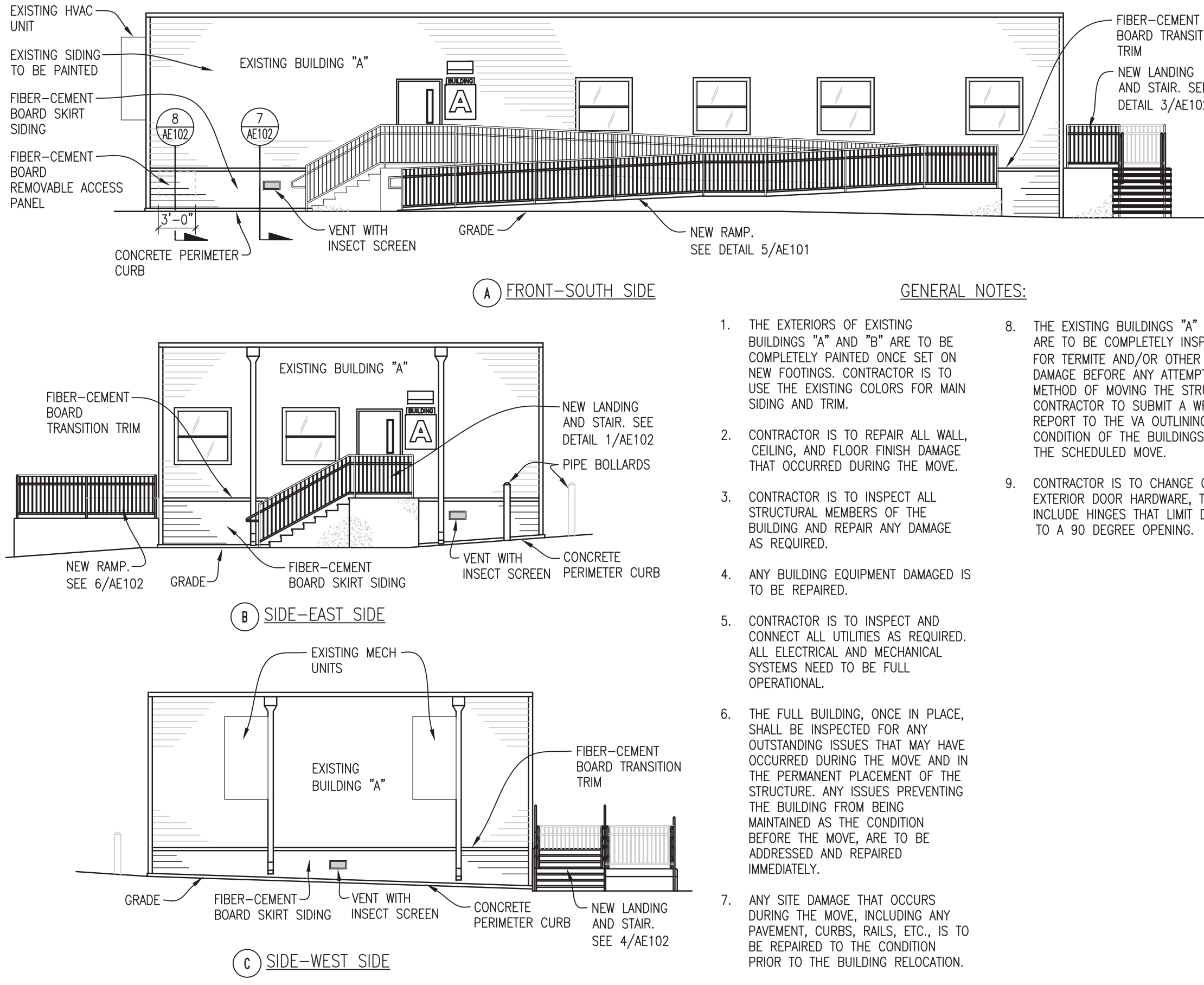


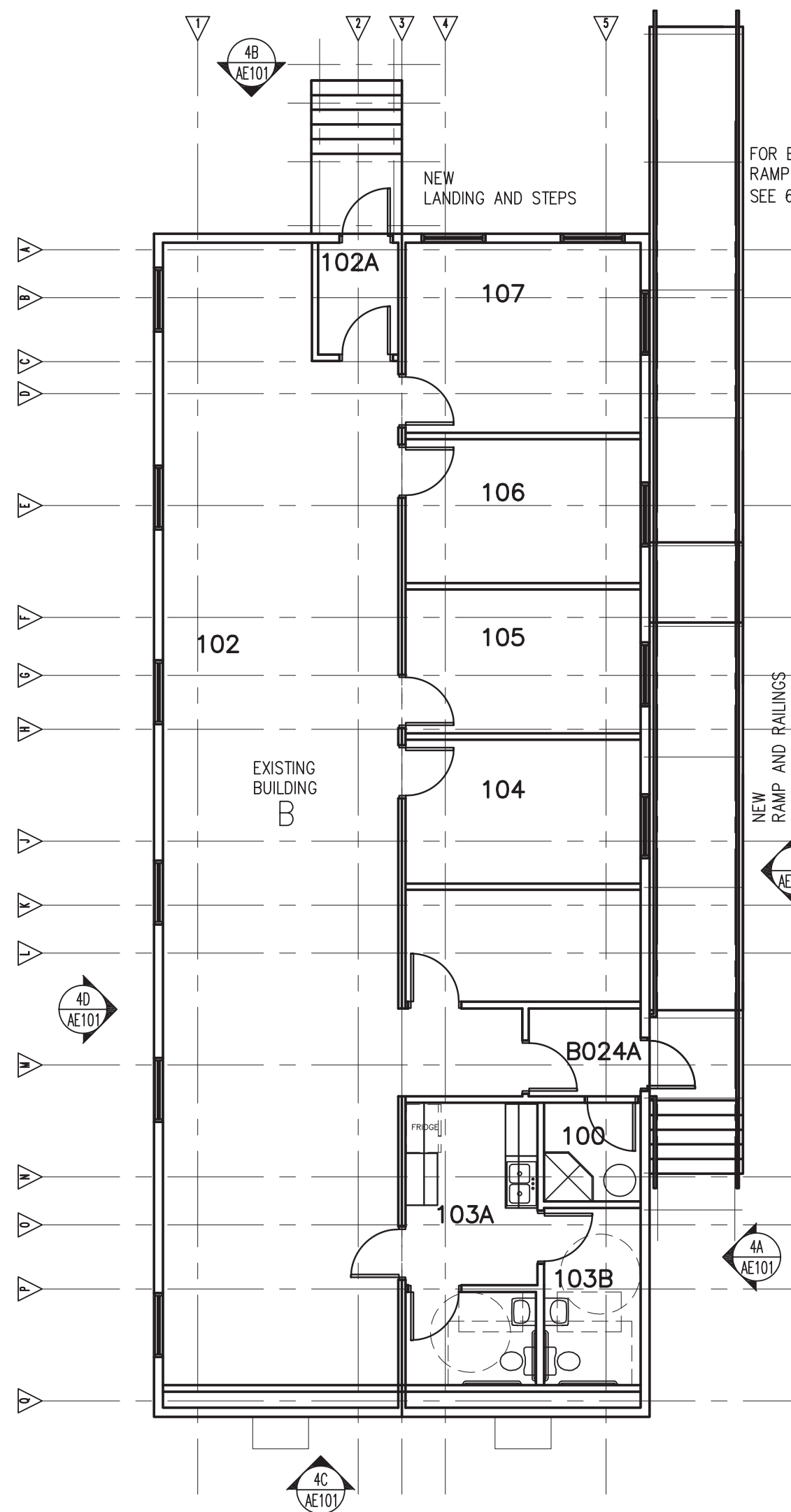
three eighths inch = one foot  
one eighth inch = one foot  
one quarter inch = one foot  
one half inch = one foot  
three quarters inch = one foot  
one inch = one foot  
one and one half inches = one foot  
two inches = one foot  
three inches = one foot  
four inches = one foot  
five inches = one foot  
six inches = one foot  
seven inches = one foot  
eight inches = one foot  
nine inches = one foot  
ten inches = one foot  
eleven inches = one foot  
twelve inches = one foot  
thirteen inches = one foot  
fourteen inches = one foot  
fifteen inches = one foot  
sixteen inches = one foot  
seventeen inches = one foot  
eighteen inches = one foot  
nineteen inches = one foot  
twenty inches = one foot  
twenty one inches = one foot  
twenty two inches = one foot  
twenty three inches = one foot  
twenty four inches = one foot  
twenty five inches = one foot  
twenty six inches = one foot  
twenty seven inches = one foot  
twenty eight inches = one foot  
twenty nine inches = one foot  
thirty inches = one foot  
thirty one inches = one foot  
thirty two inches = one foot  
thirty three inches = one foot  
thirty four inches = one foot  
thirty five inches = one foot  
thirty six inches = one foot  
thirty seven inches = one foot  
thirty eight inches = one foot  
thirty nine inches = one foot  
forty inches = one foot  
forty one inches = one foot  
forty two inches = one foot  
forty three inches = one foot  
forty four inches = one foot  
forty five inches = one foot  
forty six inches = one foot  
forty seven inches = one foot  
forty eight inches = one foot  
forty nine inches = one foot  
fifty inches = one foot  
fifty one inches = one foot  
fifty two inches = one foot  
fifty three inches = one foot  
fifty four inches = one foot  
fifty five inches = one foot  
fifty six inches = one foot  
fifty seven inches = one foot  
fifty eight inches = one foot  
fifty nine inches = one foot  
sixty inches = one foot  
sixty one inches = one foot  
sixty two inches = one foot  
sixty three inches = one foot  
sixty four inches = one foot  
sixty five inches = one foot  
sixty six inches = one foot  
sixty seven inches = one foot  
sixty eight inches = one foot  
sixty nine inches = one foot  
seventy inches = one foot  
seventy one inches = one foot  
seventy two inches = one foot  
seventy three inches = one foot  
seventy four inches = one foot  
seventy five inches = one foot  
seventy six inches = one foot  
seventy seven inches = one foot  
seventy eight inches = one foot  
seventy nine inches = one foot  
eighty inches = one foot  
eighty one inches = one foot  
eighty two inches = one foot  
eighty three inches = one foot  
eighty four inches = one foot  
eighty five inches = one foot  
eighty six inches = one foot  
eighty seven inches = one foot  
eighty eight inches = one foot  
eighty nine inches = one foot  
ninety inches = one foot  
ninety one inches = one foot  
ninety two inches = one foot  
ninety three inches = one foot  
ninety four inches = one foot  
ninety five inches = one foot  
ninety six inches = one foot  
ninety seven inches = one foot  
ninety eight inches = one foot  
ninety nine inches = one foot  
one hundred inches = one foot



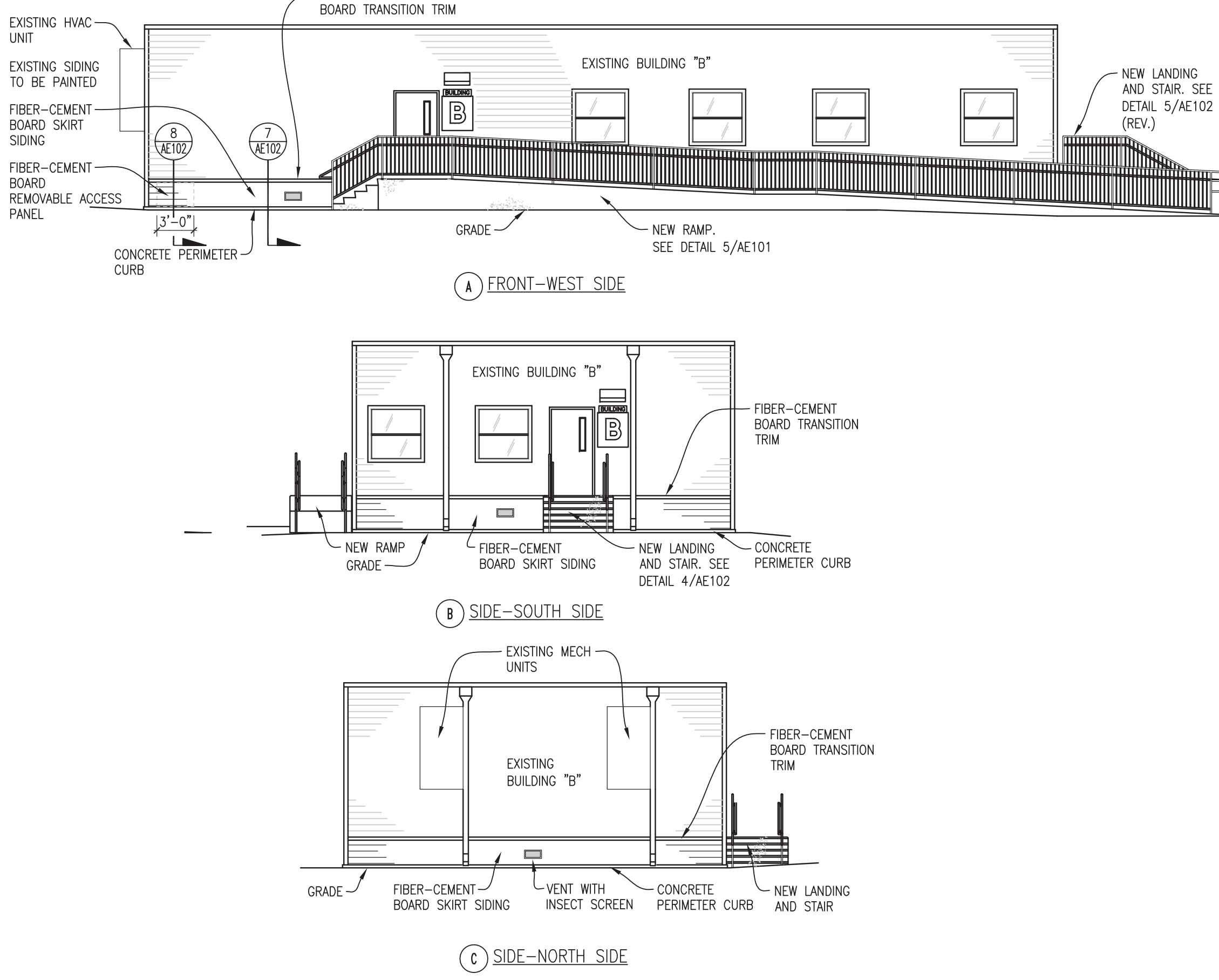
1 BUILDING "A" FLOOR PLAN  
AE101/ SCALE: 1/8" = 1'-0"



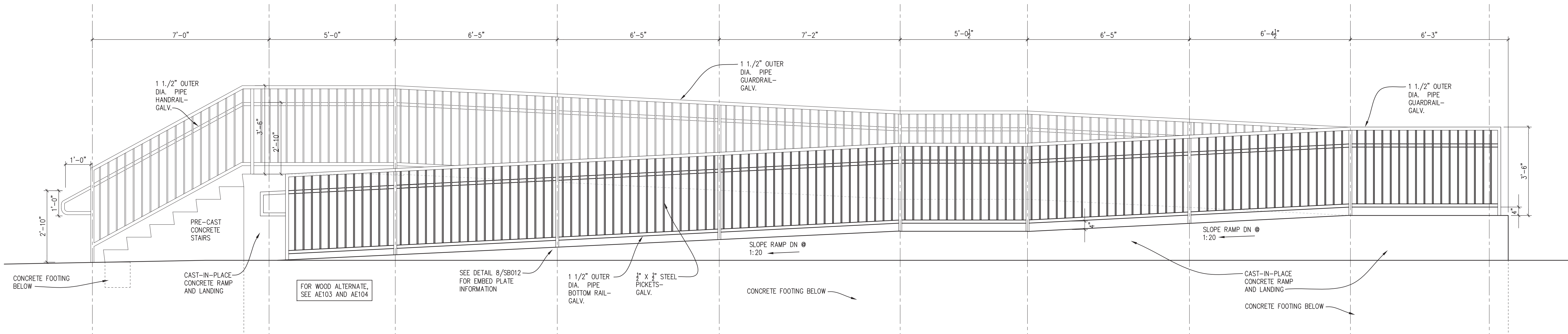
2 BUILDING "A" EXTERIOR ELEVATIONS  
AE101/ SCALE: 1/8" = 1'-0"



3 BUILDING "B" FLOOR PLAN  
AE101/ SCALE: 1/8" = 1'-0"



4 BUILDING "B" EXTERIOR ELEVATIONS  
AE101/ SCALE: 1/8" = 1'-0"



5 TYPICAL RAILING ELEVATION- RAMP AND STAIR (BUILDING "A")  
AE101/ SCALE: 1/2" = 1'-0"

#### APPLICABLE PROJECT BUILDING CODES:

BUILDING CLASSIFICATION: CLASSIFICATION AS SPECIFIED IN 2012 ADDITION OF NFPA 101 (FOR ALL NEW CONSTRUCTION) AND 2009 IBC FOR STRUCTURAL WORK.

EXISTING BUILDINGS: BUILDINGS THAT ARE TO BE RELOCATED WERE BUILT PER 2006 IBC USER GROUP B (OCCUPANT LOAD 23)

ROOF DESIGN LOAD: 30 PSF.

FLOOR LIVE LOAD: 50 PSF, WITH 100 PSF @ CORRIDOR TRAILERS

WIND LOAD: 130 MPH 3 SECOND GUST.

EXPOSURE B CONSTRUCTION TYPE 5B

FIRE PROTECTION SYSTEM: NON-SPRINKLERED.

BUILDING STATISTICS:  
AREA BUILDING "A" (EXIST. RELOCATED)- 2294 SQ. FT.  
AREA BUILDING "B" (EXIST. RELOCATED)- 2294 SQ. FT.

#### CONSULTANTS:

#### ARCHITECT/ENGINEERS:

LEO A DAILY  
PLANNING  
ARCHITECTURE  
INTERIORS  
EST. 1955

8600 Indian Hills Drive  
Omaha, NE 68114-4039 USA  
Tel 402-391-8111 Fax 402-391-8564

Architect Project No.  
003-10121-017

Drawing Title

MODULAR BUILDING FLOOR  
PLANS, EXTERIOR ELEVATIONS,  
RAILING ELEVATIONS, BUILDINGS A & B

Approved Project Director

Project Title

FISHER HOUSE  
SITE PREP

Location  
OMAHA, NE

Date  
October 18, 2016

Checked  
GAL

Drawn  
JMK

Project Number  
636-CSI-100

Building Number  
A, B, 3

Drawing Number  
AE101

Office of  
Construction and  
Facilities  
Management

VA U.S. Department  
of Veterans Affairs