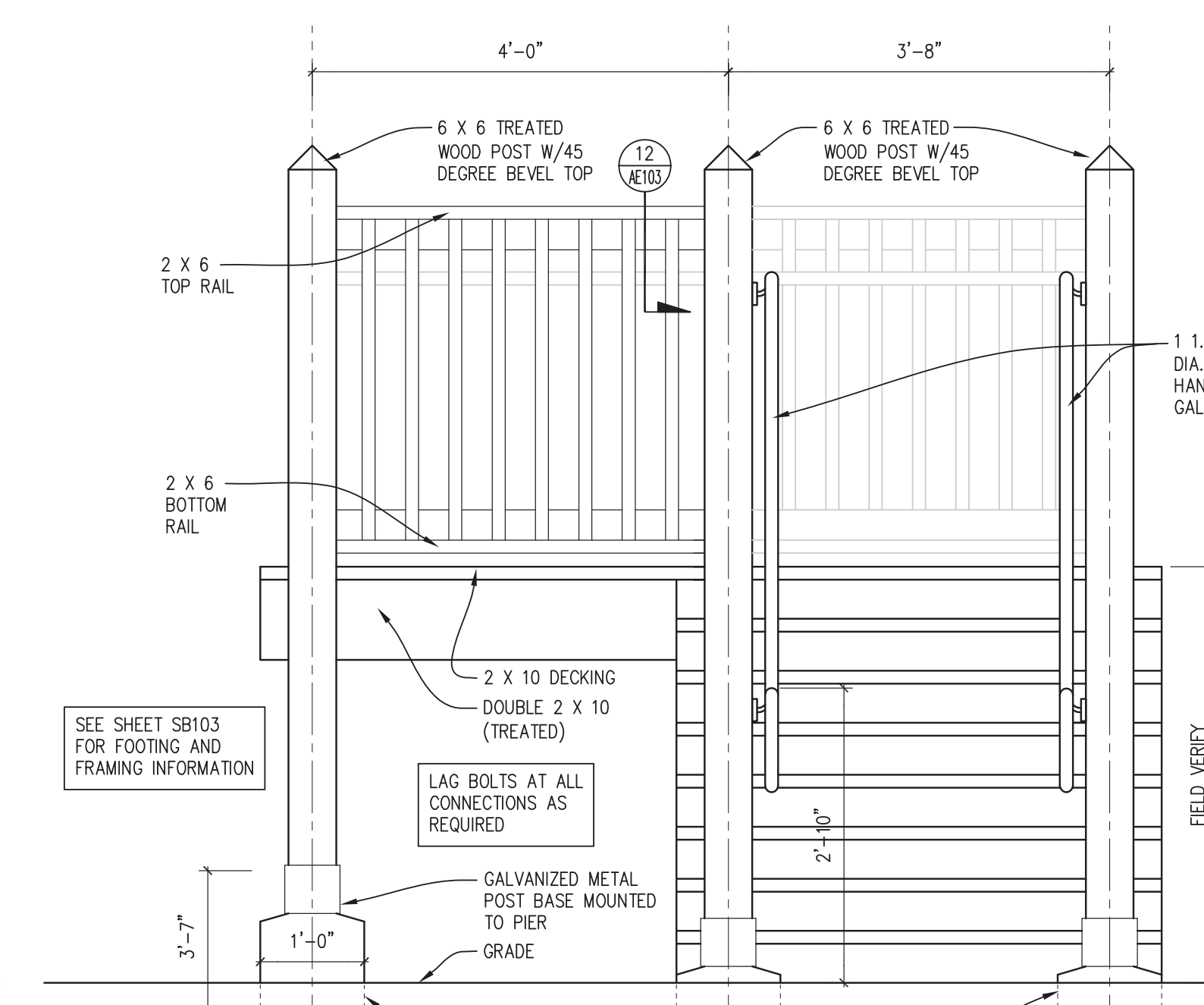
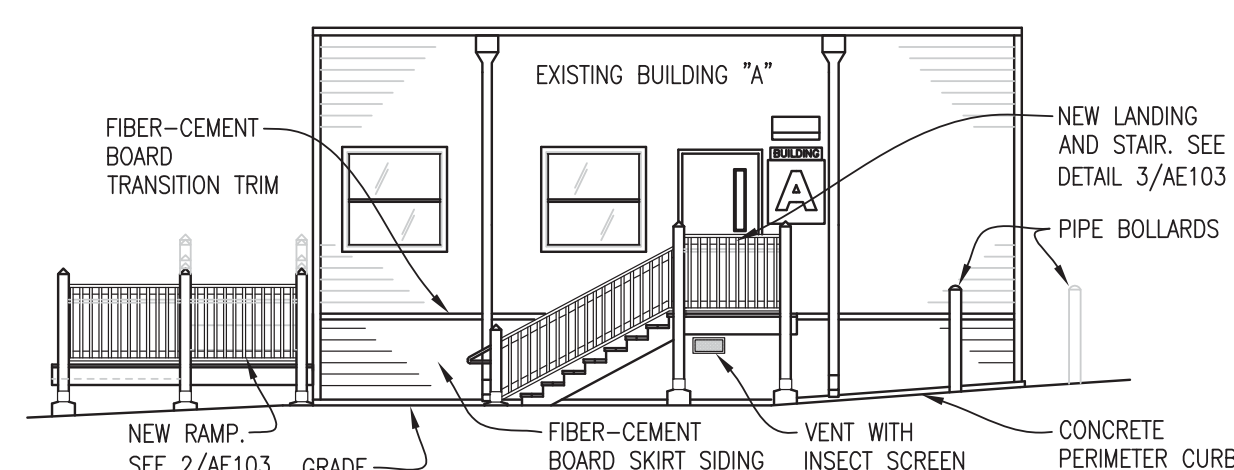


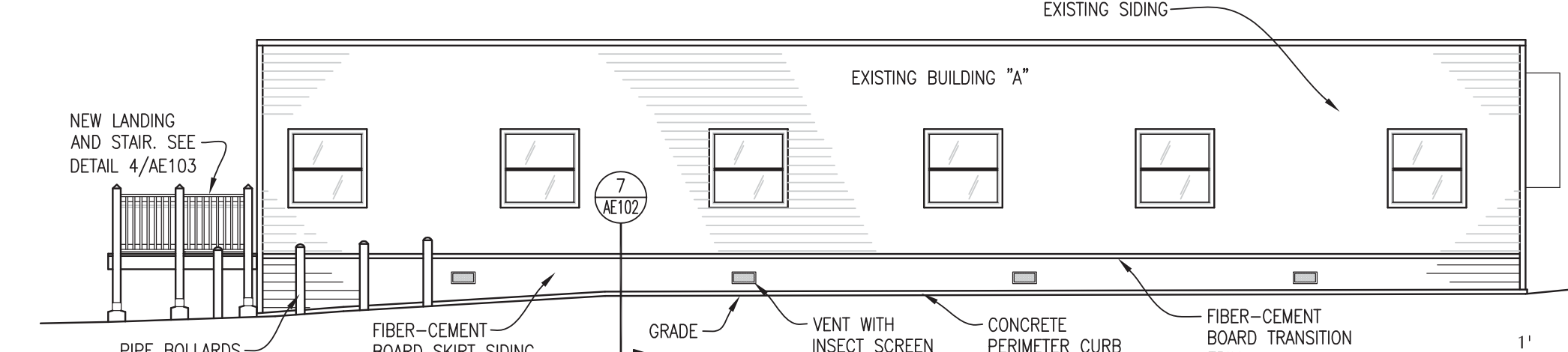
1 ALTERNATE RAILING ELEVATION- RAMP AND STAIR (BUILDING "A")
AE103 SCALE: 1/2" = 1'-0"



5 STAIR LANDING AND STAIR ELEVATION- BUILDING "A"
SCALE: 3/4" = 1'-0"



9 ALTERNATE- WOOD RAILING ELEVATION, BUILDING "A"
AE103 SCALE: 1/8" = 1'-0"



11 ALTERNATE- WOOD RAILING ELEVATION, BUILDING "A"
AF103 SCALE: 1/8" = 1'-0"

[illegible]