

P:\003\003-10121-017\VE Design\SP-DB-DB-DB\01 Drawings\06 Structural\SB103.dwg October 18, 2016 - 10:52am JMKent

NO.	DESCRIPTION	DATE
1	DEDUCT ALTERNATE BID #2-BUILDING FOOTING PLAN-BUILDING "A"	5/19/2008 4:34:47 PM
2		
3		
4		
5		
6		
7		
8		
9		
10		
11		
12		
13		
14		
15		
16		

VA FORM 08-6231, OCT 1978

#### CONSULTANTS:

#### ARCHITECT/ENGINEERS:

**LEO A DAILY**  
PLANNING  
ARCHITECTURE  
ENGINEERING  
INTERIORS  
EST. 1915

8600 Indian Hills Drive  
Omaha, NE 68114-4039 USA  
Tel 402-391-8111 Fax 402-391-8564

Architect Project No.  
003-10121-017

#### Drawing Title

DEDUCT ALTERNATE BID #2-  
FOUNDATION PLANS  
AND NOTES

Approved Project Director

#### Project Title

FISHER HOUSE  
SITE PREP

Location  
OMAHA, NE

Date  
October 18, 2016

Checked  
DAY

Drawn  
JMK

Project Number  
636-CSI-100

Building Number  
A, B, 3

Drawing Number  
SB103

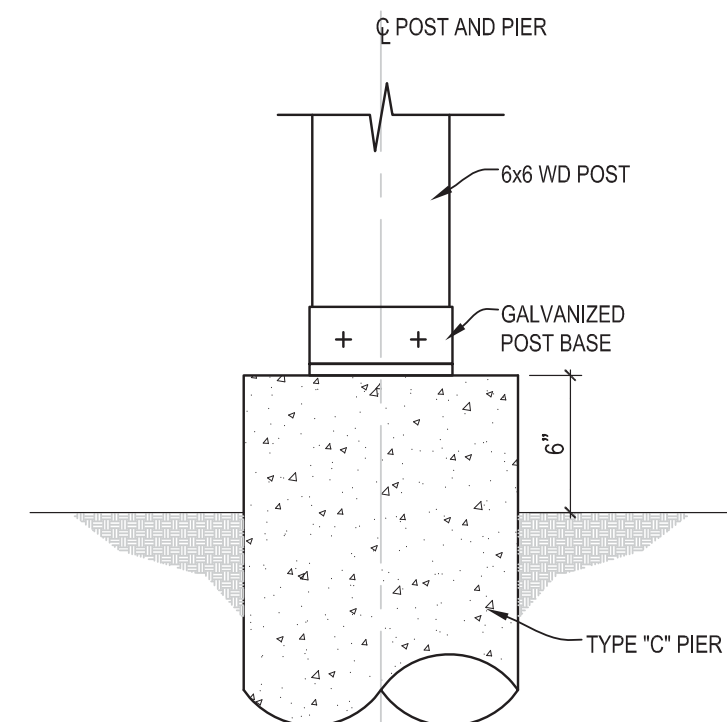
Office of  
Construction and  
Facilities  
Management

VA U.S. Department  
of Veterans Affairs

4" 0 4" 8"  
SCALE: 1 1/2" = 1'-0"  
4" 0 4" 8"  
SCALE: 1/8" = 1'-0"  
2" 0 2" 4"  
SCALE: 1/4" = 1'-0"

#### 6 TYPICAL POST CONNECTION

SB103 SCALE: 1 1/2" = 1'-0"

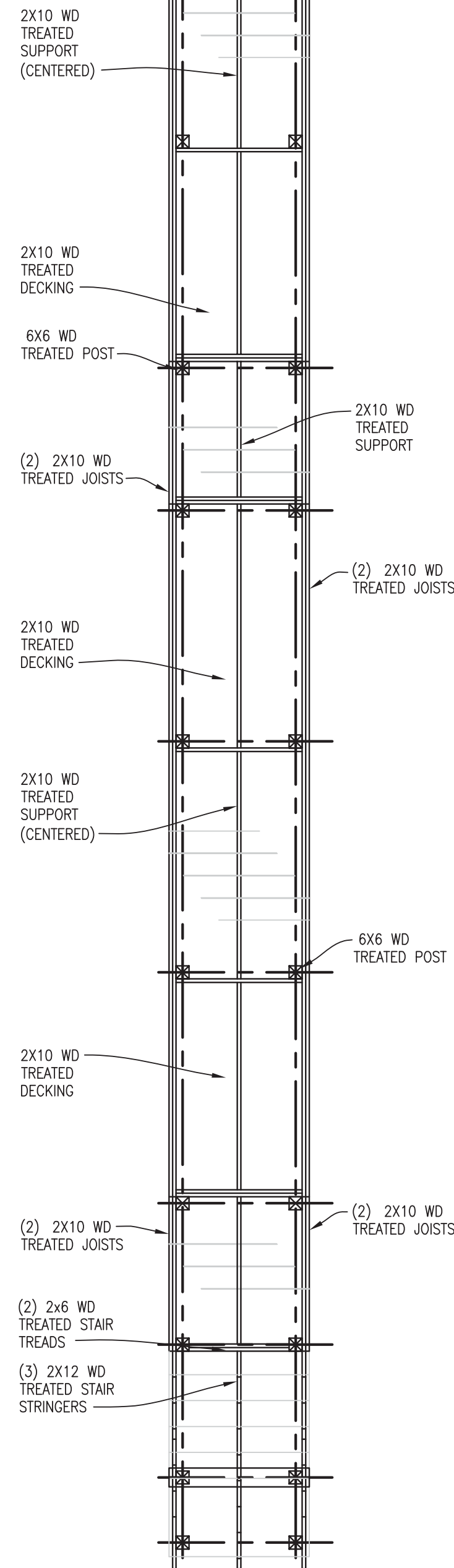


#### 5 DEDUCT ALTERNATE BID #2 RAMP, LANDING AND STAIR FRAMING- BUILDING A

SB103 SCALE: 1/4" = 1'-0"

#### 4 DEDUCT ALTERNATE BID #2 RAMP, LANDING AND STAIR FRAMING- BUILDING B

SB103 SCALE: 1/4" = 1'-0"



#### 2 DEDUCT ALTERNATE BID #2- LANDING AND STAIR FRAMING "BUILDING A"

SB103 SCALE: 1/2" = 1'-0"

#### 3 DEDUCT ALTERNATE BID #2- LANDING AND STAIR FRAMING "BUILDING B"

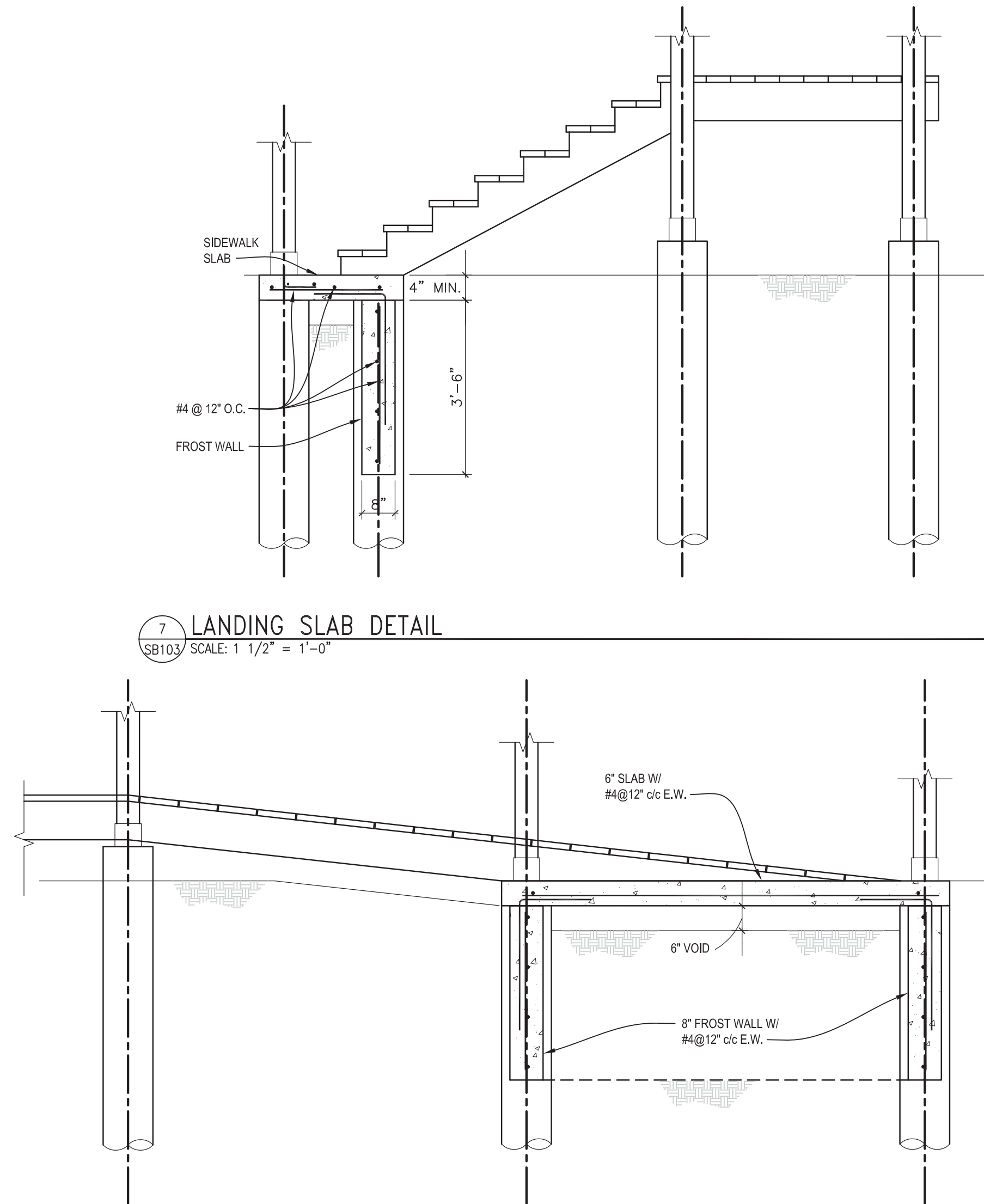
SB103 SCALE: 1/2" = 1'-0"

#### 7 LANDING SLAB DETAIL

SB103 SCALE: 1 1/2" = 1'-0"

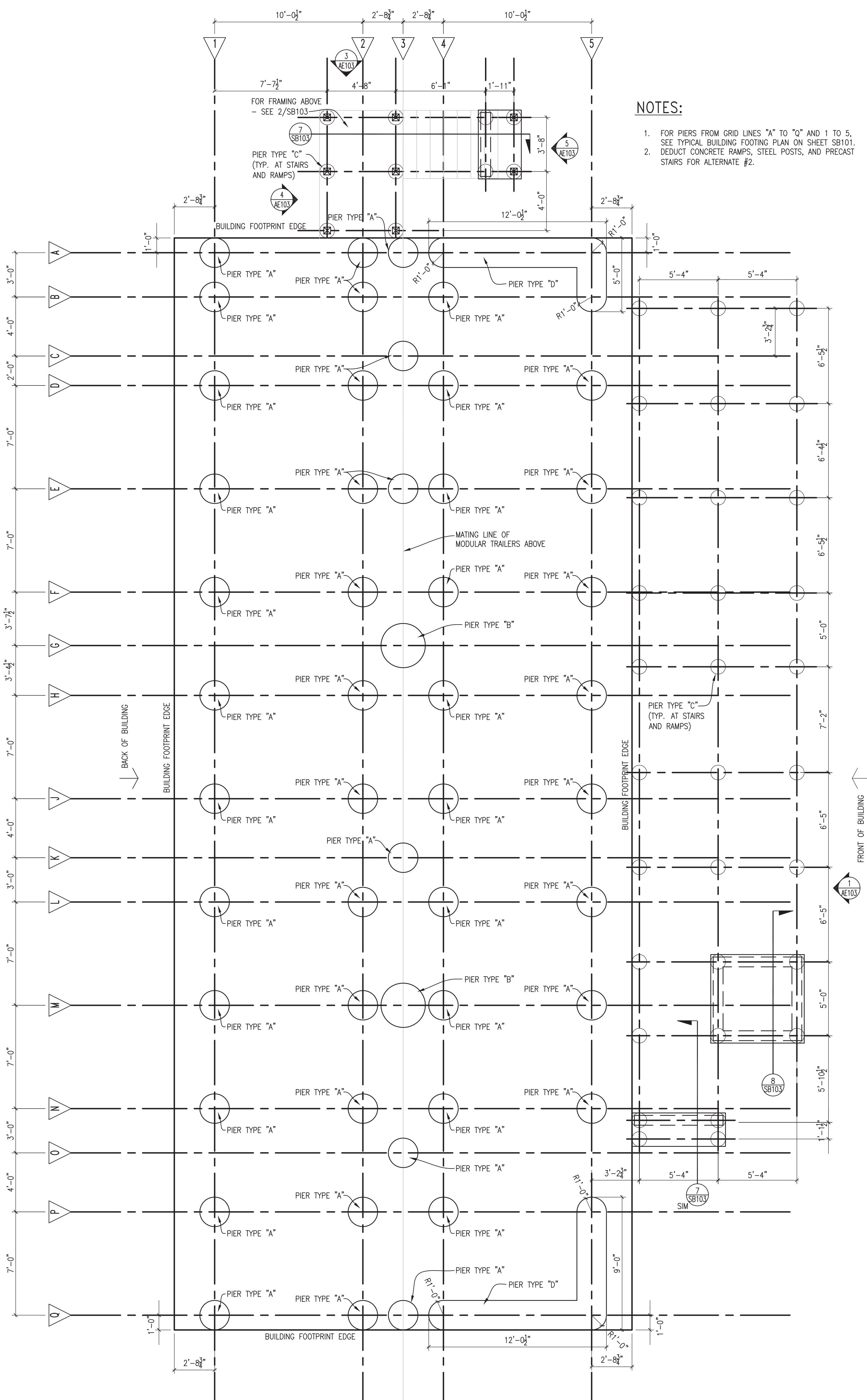
#### 8 LANDING SLAB DETAIL

SB103 SCALE: 1 1/2" = 1'-0"



#### NOTES:

1. FOR PIERS FROM GRID LINES "A" TO "G" AND 1 TO 5, SEE TYPICAL BUILDING FOOTING PLAN ON SHEET SB101.
2. DEDUCT CONCRETE RAMPS, STEEL POSTS, AND PRECAST STAIRS FOR ALTERNATE #2.



#### 1 DEDUCT ALTERNATE BID #2-BUILDING FOOTING PLAN-BUILDING "A"

SB103 SCALE: 1/4" = 1'-0"

three inches = one foot

one and one half inches = one foot

one inch = one foot

three quarters inch = one foot

one half inch = one foot

three eighths inch = one foot

one quarter inch = one foot

one eighth inch = one foot