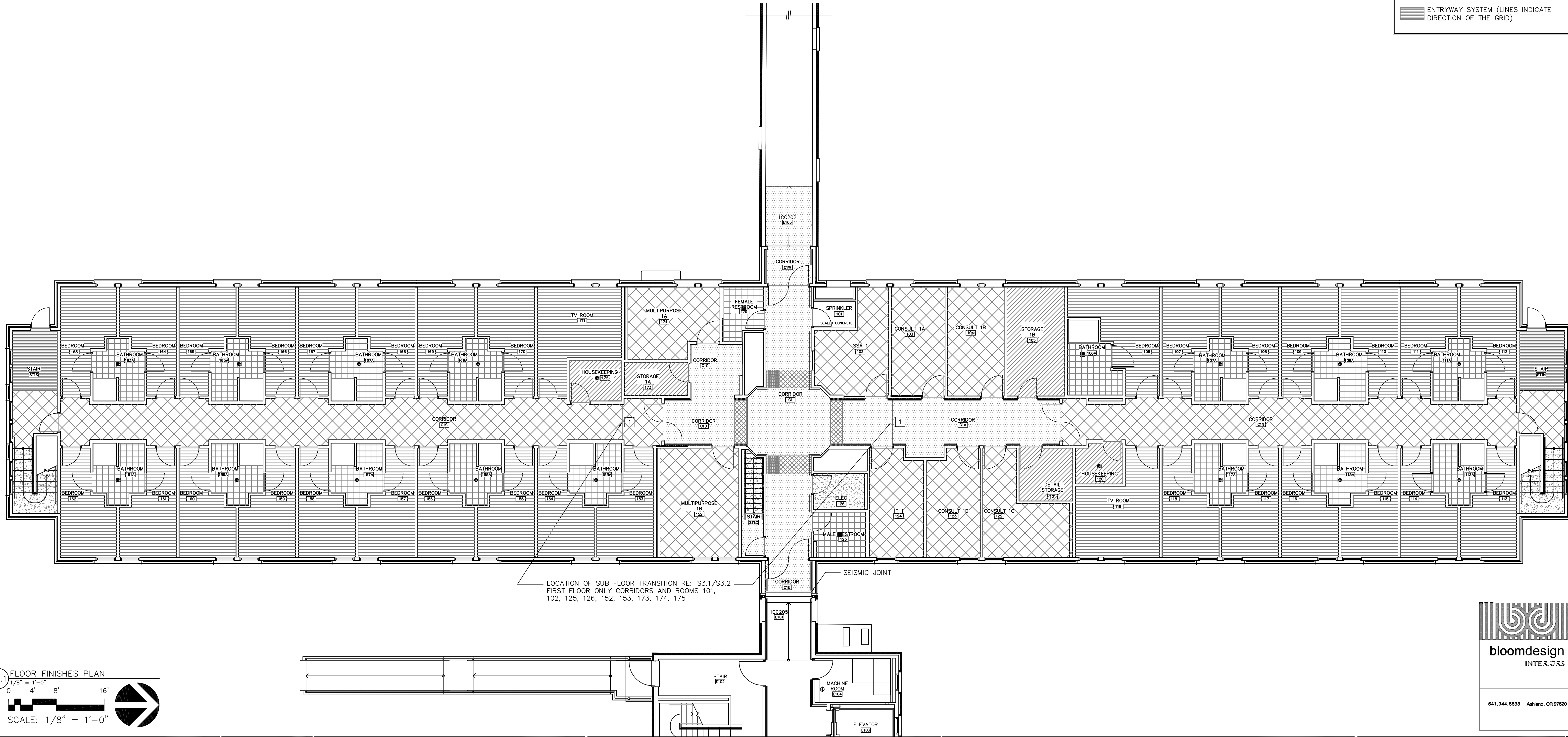


- NOTES
- COORDINATE REQUIREMENTS WITH SHEET VINYL AND VINYL TILE MANUFACTURERS FOR APPROPRIATE SEAMING @ SUB-FLOOR MATERIALS TRANSITION.
  - COORDINATE CERAMIC TILE INSTALLATION WITH CHANGE IN SUB-FLOOR MATERIALS TRANSITION.
  - RE: A2.12 FOR BATHROOM FLOOR SLOPE
  - VT-2, VT-3 TO BE INSTALLED IN A DIAGONAL STACK PATTERN

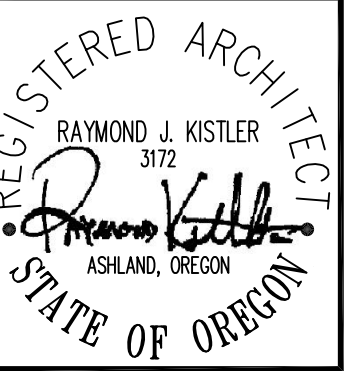
FLOOR FINISHES LEGEND		
	VINYL TILE (WELDED SEAMS AT TRANSITIONS W/RUBBER BASE), WOOD PATTERN	(VT-1)
	VINYL TILE (WELDED SEAMS AT TRANSITIONS W/RUBBER BASE)	(VT-2)
	VINYL TILE (WELDED SEAMS AT TRANSITIONS W/RUBBER BASE)	(VT-3)
	SHEET VINYL (WELDED SEAMS - INTEGRAL COVE BASE IN CONNECTING CORRIDORS ONLY)	(WSF-1)
	SHEET VINYL (WELDED SEAMS - INTEGRAL COVE BASE IN CONNECTING CORRIDORS ONLY)	(WSF-2A)
	SHEET VINYL (WELDED SEAMS W/INTEGRAL COVE BASE)	(WSF-2B)
	SHEET VINYL (WELDED SEAMS W/ INTEGRAL COVE BASE IN HOUSEKEEPING ONLY)	(WSF-3)
	CERAMIC TILE	(CT)
	RESILIENT STAIR TREADS, RISERS AND SKIRTING	(RST)
	W/ MATCHING 12X12 RUBBER TILES ON INTERMEDIATE LANDINGS	(RT)
	ENTRYWAY SYSTEM (LINES INDICATE DIRECTION OF THE GRID)	(ES)



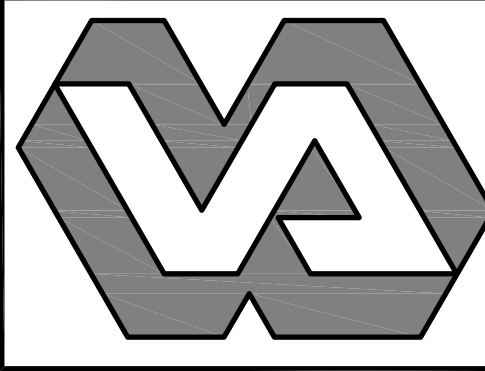
F1.1 FLOOR FINISHES PLAN  
1/8" = 1'-0"  
0 4' 8' 16'  
SCALE: 1/8" = 1'-0"



REVISIONS	DATE



KISTLER SMALL WHITE, ARCHITECTS  
66 WATER STREET  
ASHLAND, OREGON 97520  
P: 541-489-9300  
F: 541-552-9512  
www.kistlersmallwhite.com



DEPARTMENT OF VETERANS AFFAIRS  
**SOUTHERN OREGON  
REHABILITATION CENTER & CLINICS**  
8495 CRATER LAKE HIGHWAY  
WHITE CITY, OREGON

DRAWING TITLE:  
**FIRST FLOOR PLAN  
FLOOR FINISHES**  
FULLY SPRINKLERED FACILITY


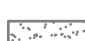








PROJECT TITLE REPLACE SEISMICALLY DEFICIENT DOM B206 & DEMO PORTION B250		
DRAWN BY:	DATE: 24 JULY 2015	DRAWING NO.: <b>F1.1</b>
CHECK BY:	VA PROJECT NO.: 692-344	DWG.1 OF 4

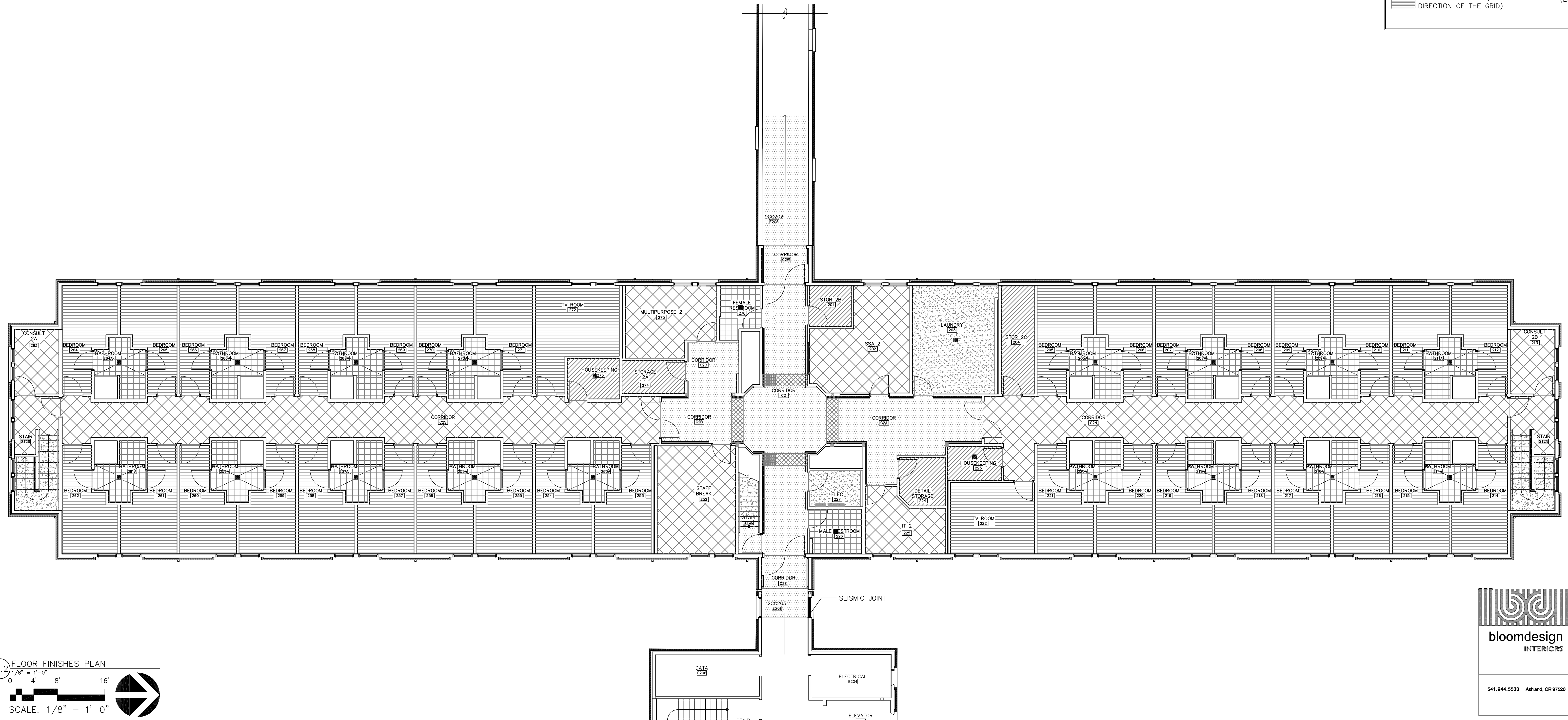
US DEPARTMENT OF  
VETERANS AFFAIRS



- ## NOTES

1. COORDINATE REQUIREMENTS WITH SHEET VINYL AND VINYL TILE MANUFACTURERS FOR APPROPRIATE SEAMING @ SUB-FLOOR MATERIALS TRANSITION.
2. COORDINATE CERAMIC TILE INSTALLATION WITH CHANGE IN SUB-FLOOR MATERIALS TRANSITION.
3. RE: A2.12 FOR BATHROOM FLOOR SLOPE
4. VT-2, VT-3 TO BE INSTALLED IN A DIAGONAL STACK PATTERN

### FLOOR FINISHES LEGEND

- |   |  |          |
|---|--|----------|
|  | VINYL TILE (WELDED SEAMS AT TRANSITIONS W/RUBBER BASE), WOOD PATTERN         | (VT-1)   |
|  | VINYL TILE (WELDED SEAMS AT TRANSITIONS W/RUBBER BASE)                       | (VT-2)   |
|  | VINYL TILE (WELDED SEAMS AT TRANSITIONS W/RUBBER BASE)                       | (VT-3)   |
|  | SHEET VINYL (WELDED SEAMS - INTEGRAL COVE BASE IN CONNECTING CORRIDORS ONLY) | (WSF-1)  |
|  | SHEET VINYL (WELDED SEAMS - INTEGRAL COVE BASE IN CONNECTING CORRIDORS ONLY) | (WSF-2A) |
|  | SHEET VINYL (WELDED SEAMS W/INTEGRAL COVE BASE)                              | (WSF-2B) |
|  | SHEET VINYL (WELDED SEAMS W/ INTEGRAL COVE BASE IN HOUSEKEEPING ONLY)        | (WSF-3)  |
|  | CERAMIC TILE   | (CT)     |
|  | RESILIENT STAIR TREADS, RISERS AND SKIRTING                                  | (RST)    |
|   | W/ MATCHING 12X12 RUBBER TILES ON INTERMEDIATE LANDINGS                      | (RT)     |
|  | ENTRYWAY SYSTEM (LINES INDICATE DIRECTION OF THE GRID)                       | (ES)     |



**F1.2 FLOOR FINISHES PLAN**  
 $1/8" = 1'-0"$   
 0 4' 8' 16'  
  
 SCALE:  $1/8" = 1'-0"$   




**bloomdesign**  
INTERIORS

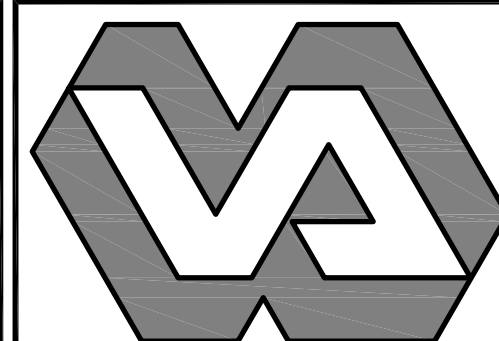
541.944.5533 Ashland, OR 97520

REVISIONS	DATE

The logo for Kistler + Small + White Architects. It features the text "kistler + small + white" in a lowercase, sans-serif font, stacked vertically. Below this, the word "architects" is written in a smaller, lowercase, sans-serif font. The entire text is centered within a dark gray square, which is itself enclosed by a white border.

kistler +  
small  
+ white  
architects

**KISTLER SMALL WHITE, ARCHITECTS**  
66 WATER STREET  
ASHLAND, OREGON 97520  
P: 541-488-8200  
F: 541-552-9512  
[www.kistlersmallwhite.com](http://www.kistlersmallwhite.com)



DEPARTMENT OF VETERANS AFFAIRS

**SOUTHERN OREGON  
REHABILITATION CENTER & CLINICS**

8495 CRATER LAKE HIGHWAY  
WHITE CITY, OREGON

DRAWING TITLE:

SECOND FLOOR PLAN

FLOOR FINISHES

FULLY SPRINKLERED FACILITY

PROJECT TITLE REPLACE SEISMICALLY DEFICIENT DOM B206 & DEMO PORTION B250		
DRAWN BY:	DATE: 24 JULY 2015	DRAWING NO.: <b>F1.2</b>
CHECK BY:	VA PROJECT NO.: 692-344	DWG. 2 OF 4

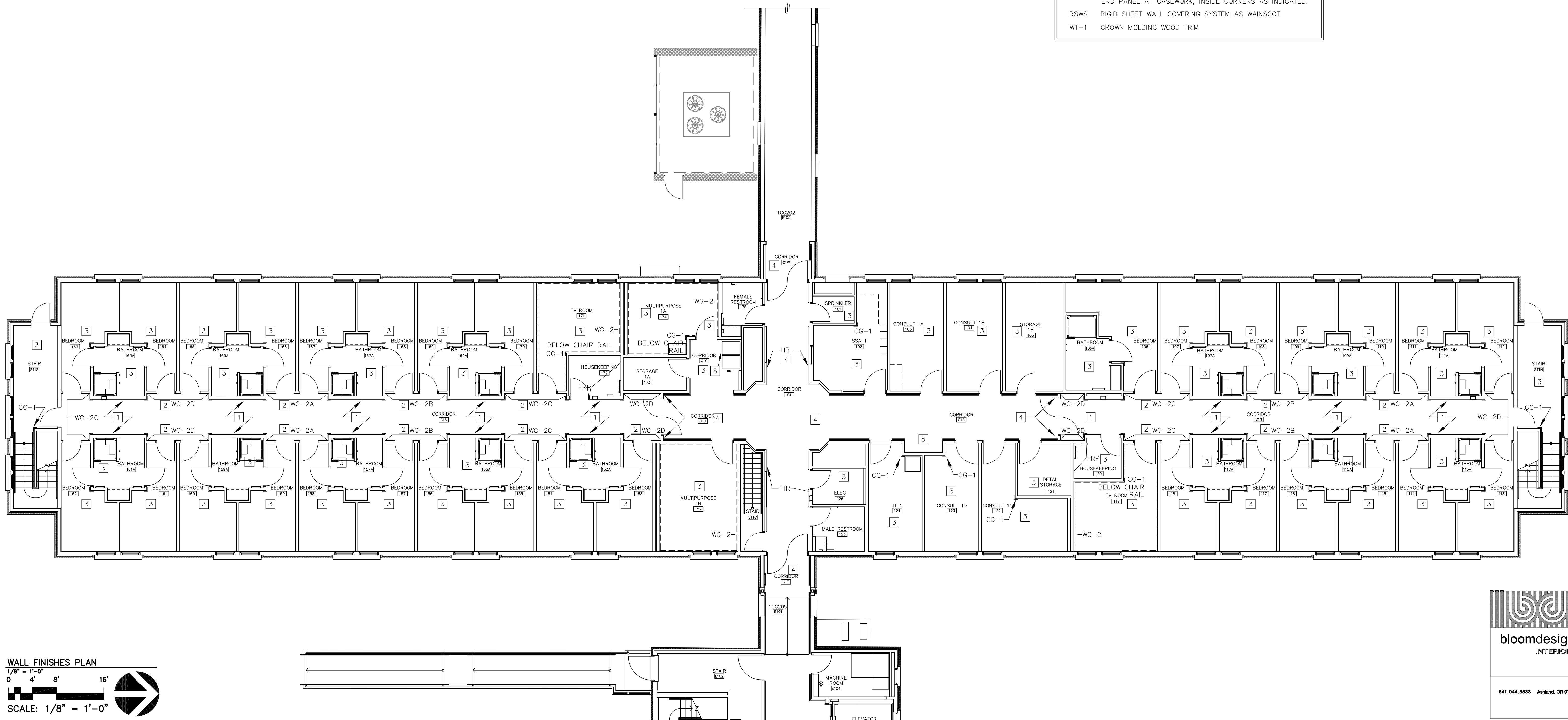
VETERANS AFFAIRS

WALL FINISHES LEGEND

- CG-1 3"x3"x36" OR 48" 90° CORNER GUARD (FIELD CUT TO FIT FROM FINISHED FLOOR TO HEIGHT AS INDICATED ON ELEVATIONS)
- CG-2 1"x1" TAPE-ON CORNER GUARD - TRIM IN FIELD
- P PAINT - SEE SECTION 09 06 00 "SCHEDULE FOR FINISHES" FOR COLOR AND GLOSS LEVEL
- HR ROUND STAINLESS STEEL HANDRAIL W/ ATTACHED CRASH RAIL - TOTAL HEIGHT 6"
- WC-1 VINYL-COATED FABRIC WALL COVERING
- WC-2A VINYL-COATED FABRIC WALL COVERING - COLOR A
- WC-2B VINYL-COATED FABRIC WALL COVERING - COLOR B
- WC-2C VINYL-COATED FABRIC WALL COVERING - COLOR C
- WC-2D VINYL-COATED FABRIC WAL COVERING - COLOR D
- WG-1 4" RIGID CRASH RAIL WITH CUSTOM HARDWOOD TRIM ABOVE
- WG-2 4" RIGID CRASH RAIL WITH VINYL COVER ALIGN BOTTOM OF CRASH RAIL W/LOWER EDGE OF WINDOW SILL @ T.V. ROOMS
- WG-3 1 1/8" IMPACT RESISTANT BUMPER RAIL
- FRP FIBERGLASS REINFORCED PLASTIC PANELS, TO 48" A.F.F. PROVIDE APPLICABLE MOLDINGS INCLUDING CAPS, ANGLES, CORNERS, DIVISIONS. END PANEL AT CASEWORK, INSIDE CORNERS AS INDICATED.
- RSWS RIGID SHEET WALL COVERING SYSTEM AS WAINSCOT
- WT-1 CROWN MOLDING WOOD TRIM

NOTES

- 1 TYPICAL CONDITION FOR RESIDENTIAL CORRIDORS
- WG-1 @ 3'-6" AS A CHAIR RAIL
- WC-1 BELOW CHAIR RAIL
- P-1 ABOVE CHAIR RAIL
- WT-1 @ TOP OF WALL
- CG-2 @ EACH CORNER (FIELD CUT TO FIT FROM UNDERSIDE OF CHAIR RAIL TO WG-3
- WG-3 ABOVE 4" RB
- 2 WC-2 @ ALL RESIDENT ENTRIES. SEE SECTION 09 06 00 "SCHEDULE FOR FINISHES" FOR LIST OF COLORS
- 3 SEE SECTION 09 06 00 "SCHEDULE FOR FINISHES" FOR PAINT COLORS IN THESE ROOMS
- 4 TYPICAL CONDITION FOR CONNECTING CORRIDORS
- HR @ 2'-10" A.F.F.
- RSWS BELOW HANDRAIL
- P-7 ABOVE HANDRAIL
- WG-3 @ TOP OF INTEGRAL COVE BASE
- 5 TYPICAL CONDITION WHERE NO HANDRAIL OCCURS
- RSWS WITH P-7 ABOVE
- WG-2 ABOVE RSWS @ SAME HEIGHT AS INTEGRAL CRASH RAIL OF HR (NO HAND RAIL)



WALL FINISHES PLAN  
1/8" = 1'-0"  
0 4' 8' 16'  
SCALE: 1/8" = 1'-0"

bloomdesign  
INTERIORS

541.944.5533 Ashland, OR 97520

REVISIONS	DATE

REGISTERED ARCHITECT  
RAYMOND J. KISTLER  
3172  
ASHLAND, OREGON  
STATE OF OREGON

kistler +  
small  
+ white  
architects

KISTLER SMALL WHITE, ARCHITECTS  
66 WATER STREET  
ASHLAND, OREGON 97520  
P: 541-409-9310  
F: 541-552-9512  
www.kistlersmallwhite.com



DEPARTMENT OF VETERANS AFFAIRS  
SOUTHERN OREGON  
REHABILITATION CENTER & CLINICS  
8495 CRATER LAKE HIGHWAY  
WHITE CITY, OREGON

DRAWING TITLE:  
FIRST FLOOR PLAN  
WALL FINISHES

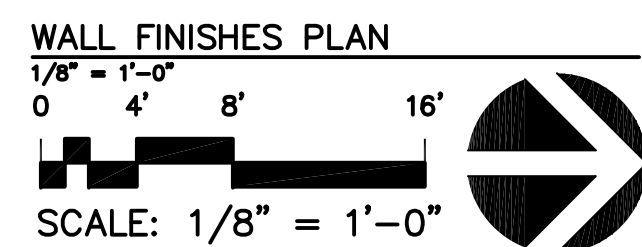
FULLY SPRINKLERED FACILITY

PROJECT TITLE REPLACE SEISMICALLY DEFICIENT DOM B206 & DEMO PORTION B250		DRAWING NO.: <b>F2.1</b> DWG. 3 OF 4
DRAWN BY:	DATE: 24 JULY 2015	
CHECK BY:	VA PROJECT NO.: 692-344	

US DEPARTMENT OF  
VETERANS AFFAIRS

CG-1	3"x3"x36" OR 48" 90° CORNER GUARD (FIELD CUT TO FIT FROM FINISHED FLOOR TO HEIGHT AS INDICATED ON ELEVATIONS)
CG-2	1"xX 1"x TAPE-ON CORNER GUARD - TRIM IN FIELD
P	PAINT - SEE SECTION 09 06 00 "SCHEDULE FOR FINISHES" FOR COLOR AND GLOSS LEVEL
HR	ROUND STAINLESS STEEL HANDRAIL W/ ATTACHED CRASH RAIL - TOTAL HEIGHT 6"
WC-1	VINYL-COATED FABRIC WALL COVERING
WC-2A	VINYL-COATED FABRIC WALL COVERING - COLOR A
WC-2B	VINYL-COATED FABRIC WALL COVERING - COLOR B
WC-2C	VINYL-COATED FABRIC WALL COVERING - COLOR C
WC-2D	VINYL-COATED FABRIC WALL COVERING - COLOR D
WG-1	4" RIGID CRASH RAIL WITH CUSTOM HARDWOOD TRIM ABOVE
WG-2	4" RIGID CRASH RAIL WITH VINYL COVER ALIGN BOTTOM OF CRASH RAIL W/LOWER EDGE OF WINDOW SILL
WG-3	1½ " IMPACT RESISTANT BUMPER RAIL
FRP	FIBERGLASS REINFORCED PLASTIC PANELS TO 48" A.F.F. PROVIDE APPLICABLE MOLDINGS INCLUDING CAPS, ANGLES, CORNERS, DIVISIONS. END PANEL AT CASEWORK, INSIDE CORNERS AS INDICATED.
RSWS	RIGID SHEET WALL COVERING SYSTEM AS WAINSCOT
WT-1	CROWN MOLDING WOOD TRIM

1. TYPICAL CONDITION - SEE ELEVATIONS A4.4.
  - WG-1 @ 3'-6" AS A CHAIR RAIL
  - P-1 BELOW CHAIR RAIL
  - P-1 ABOVE CHAIR RAIL
  - WT-1 @ TOP OF WALL
  - CG-2 @ EACH CORNER (FIELD CUT TO FIT FROM UNDERSIDE OF CHAIR RAIL TO WG-3)
  - WG-3 ABOVE 4" RB
2. WC-2 @ ALL RESIDENT ENTRIES. SEE SECTION 09 06 00 "SCHEDULE FOR FINISHES" FOR LIST OF COLORS
3. SEE SECTION 09 06 00 "SCHEDULE FOR FINISHES" FOR PAINT COLORS IN THESE ROOMS
4. TYPICAL CONDITION FOR CONNECTING CORRIDORS
  - HR @ 2'-10" A.F.F.
  - RSWS BELOW HANDRAIL
  - P-7 ABOVE HANDRAIL
  - WG-3 @ TOP OF INTEGRAL COVE BASE
5. TYPICAL CONDITION WHERE NO HANDRAIL OCCURS
  - RSWS WITH P-7 ABOVE
  - WG-2 ABOVE RSWS @ SAME HEIGHT AS INTEGRAL CRASH RAIL OF GR (NO HAND RAIL)



41.944.5533 Ashland, OR 97520

**KISTLER SMALL WHITE, ARCHITECTS**  
66 WATER STREET  
ASHLAND, OREGON 97520  
P: 541-488-8200  
F: 541-552-9512  
[www.kistlersmallwhite.com](http://www.kistlersmallwhite.com)



## SECOND FLOOR PLAN

### WALL FINISHES

CHECK BY:	VA PROJECT NO.: 692-344	<div style="font-size: 2em; font-weight: bold;">F2.2</div> <div style="font-size: 0.8em;">DWG. 4 OF 4</div>

VETERANS AFFAIRS