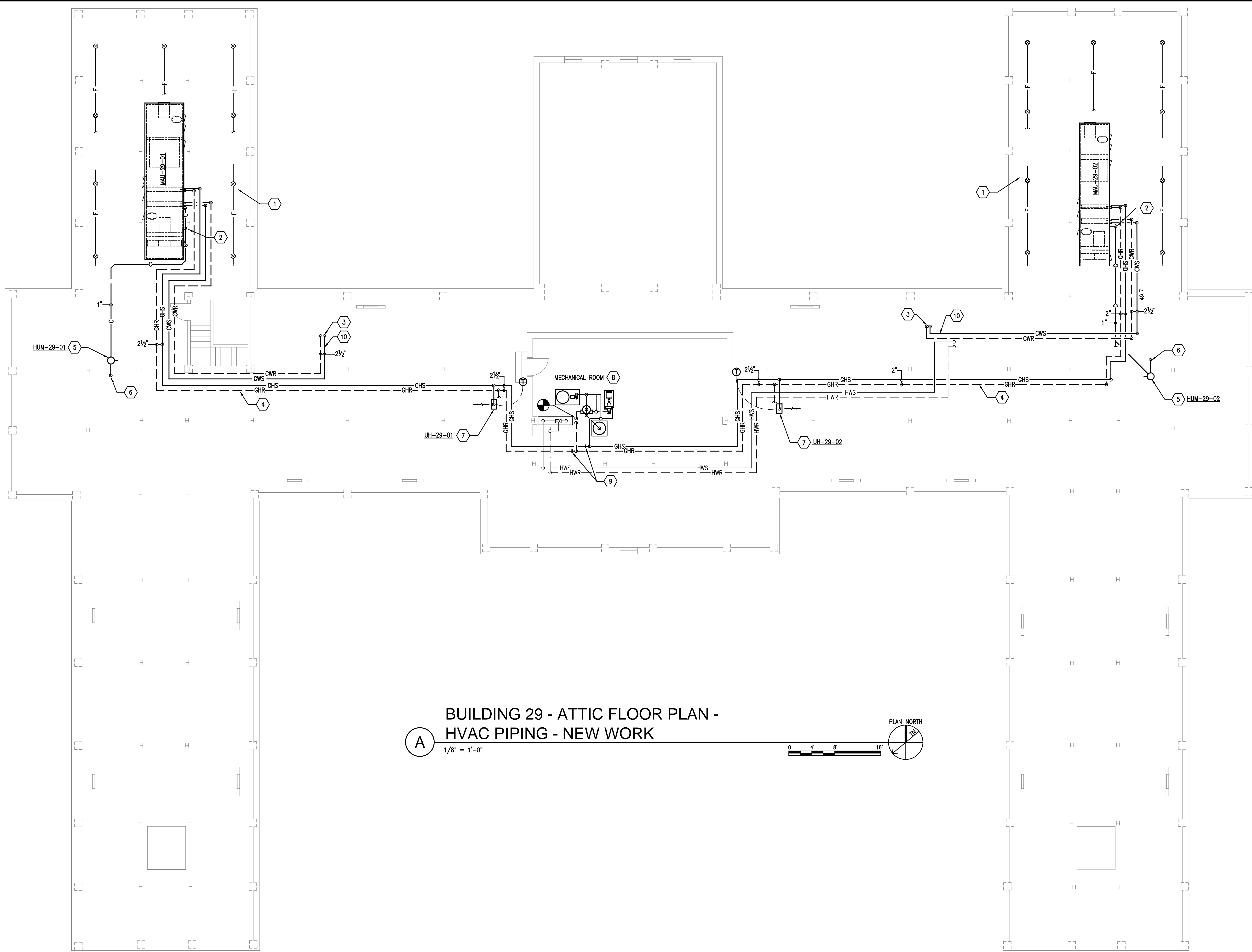
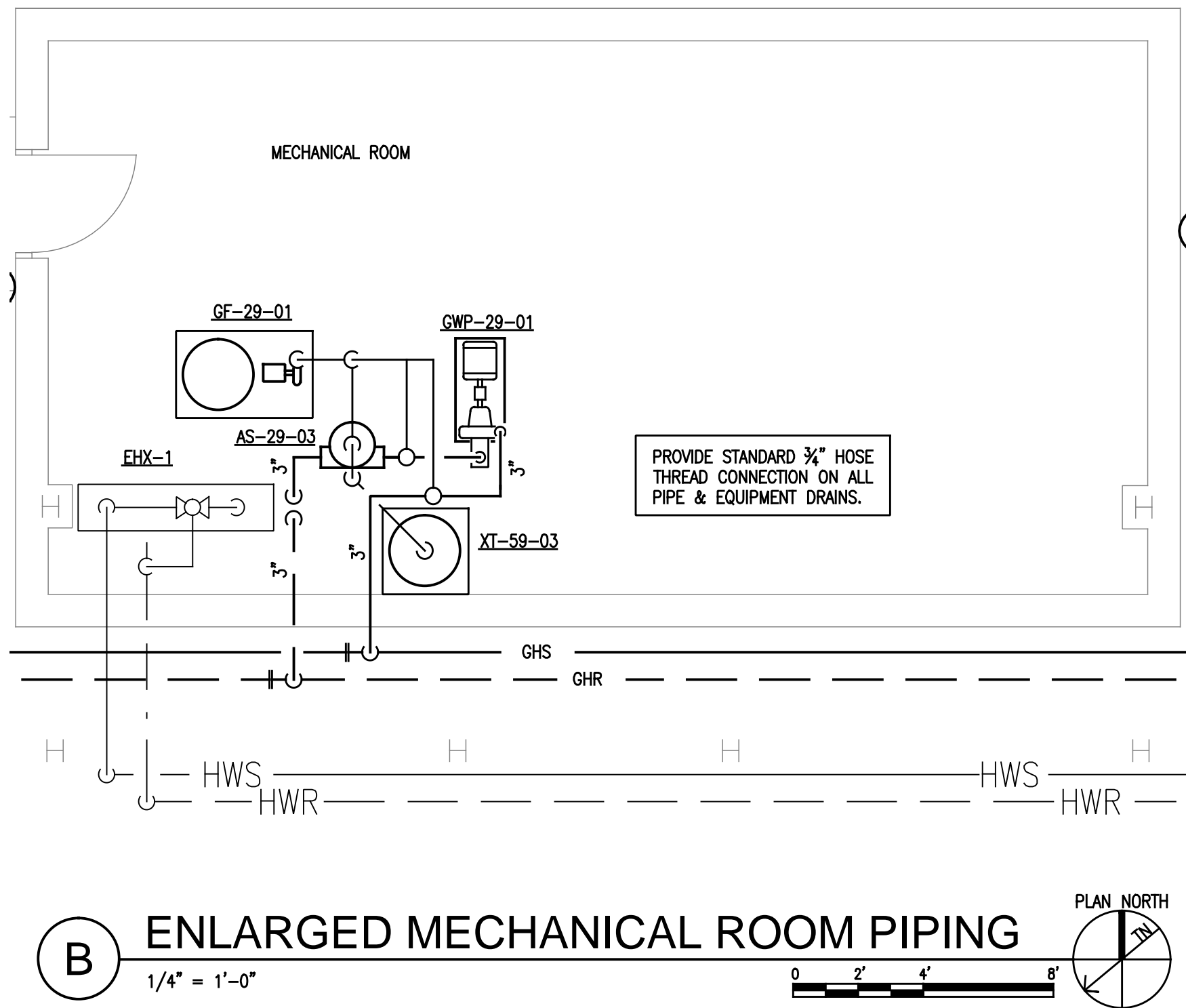


ASBESTOS NOTICE

ASBESTOS CONTAINED MATERIAL SUSPECTED TO BE WITHIN THIS WORK AREA. CONTRACTOR SHALL REVIEW ASBESTOS TEST REPORT CONDUCTED BY THE VA AND HA DRAWINGS FOR ABATEMENT ISSUES PRIOR TO BID. IF ASBESTOS CONTAINING MATERIAL IS ENCOUNTERED, CONTRACTOR TO CEASE WORK IMMEDIATELY IN OCCURRED AREA AND CONTACT COTR FOR DIRECTION.



**BUILDING 29 - ATTIC FLOOR PLAN -
HVAC PIPING - NEW WORK**
1/8" = 1'-0"



ENLARGED MECHANICAL ROOM PIPING
1/4" = 1'-0"

NEW WORK:

HEAVY LINES INDICATE NEW WORK
LIGHT LINES INDICATE EXISTING TO REMAIN

GENERAL HVAC PIPING NEW WORK NOTES:

- LOCATION OF ALL FAN COIL UNITS IS APPROXIMATE.
- DETERMINE EXACT LOCATION OF FAN COIL UNITS WITH REQUIRED ALLOWANCES FOR EXISTING LIGHT FIXTURES, ELECTRICAL CONDUIT, CABLE TRAYS, FIRE PROTECTION PIPING AND PLUMBING PIPING.
- ALLOW NECESSARY CLEARANCE AT FAN COIL UNITS FOR NEW PIPING, DUCTWORK, CONTROLS AND ELECTRICAL CONNECTIONS.
- REFER TO PIPING DETAIL DRAWINGS FOR REQUIREMENTS OF VALVES, UNIONS, FLEXIBLE HOSE CONNECTORS ON EQUIPMENT AND MOUNTING METHODS AND MATERIAL REQUIREMENTS FOR ALL WORK.
- REMOVE EXISTING CEILING TILES AND GRID REQUIRED TO INSTALL NEW FAN COIL UNITS, PIPING, DUCTWORK AND CONTROLS. REPLACE WITH EXISTING CEILING TILES AND GRID IN SATISFACTORY CONDITION. REPLACE CEILING TILES AND GRID TO MATCH EXISTING WHERE DAMAGED BY NEW WORK.
- INSTALL FAN COIL UNITS WITH SUFFICIENT HEIGHT TO ALLOW ADEQUATE CONDENSATE DRAINAGE.
- PROVIDE OFFSETS REQUIRED TO ALLOW PIPING TO FIT IN AVAILABLE SPACE.
- PROVIDE MANUAL OR AUTOMATIC AIR VENTS IN ALL HIGH POINTS OF PIPING. EXTEND AIR VENT TUBES OR PIPING TO ACCESSIBLE LOCATIONS.
- PROVIDE SHUT OFF VALVES AT EACH FLOOR SERVICE AND AT ALL MAIN PIPING BRANCH INTERSECTIONS. PROVIDE ADEQUATE ACCESS TO ALL SHUT OFF VALVES FOR MAINTENANCE AND FOR BALANCE VALVES FOR FINAL TESTING AND BALANCE.
- PROVIDE A WALL MOUNTED THERMOSTAT WITH FAN SPEED CONTROL SWITCH FOR EACH FAN COIL UNIT. MOUNT EACH ITEM AT 48" ABOVE THE FINISHED FLOOR, OR AS REQUIRED BY THE OWNER OR APPLICABLE CODE FOR THE AREA OF INSTALLATION. ROUTE NEW THERMOSTAT WIRES IN EXPOSED SURFACE MOUNT WIRE MOLD TO ABOVE CEILING. LOCATIONS ARE APPROXIMATE, FIELD VERIFY.
- PROVIDE PIPE SLEEVES AT EACH PENETRATION THRU WALLS, PARTITIONS AND FLOORS. APPLY FIRE STOP MATERIAL REQUIRED BY CODE AND PER SPECIFICATIONS.
- PROVIDE SUFFICIENT SIZED ACCESS DOORS FOR ACCESS TO VALVES AND EQUIPMENT ABOVE OR BEHIND SOLID SURFACES.
- NOTIFY C.O.T.R., IN SUFFICIENT TIME TO REACT, OF ANY CHANGE IN EXISTING SYSTEMS CONDITIONS THAT WOULD ADVERSELY AFFECT THE FUNCTION AND OCCUPATION OF ANY SPACE IN THE BUILDING.

- CONCEAL ALL PIPING IN CHASES OR ABOVE CEILINGS UNLESS OTHERWISE INDICATED OR SPECIFIED.
- PATCH ALL OPENINGS IN BUILDING SURFACES, CAUSED BY DEMOLITION OR REMOVAL OF PIPING DURING CONSTRUCTION.
- PATCH OR REPLACE PIPING INSULATION WHERE EXISTING INSULATION IS DAMAGED, OPENED FOR NEW INSTALLATION OR OBSERVED DURING CONSTRUCTION.
- CONTRACTOR SHALL PROVIDE TEMPORARY BYPASS PIPING AS REQUIRED TO MAINTAIN OPERATION OF EXISTING AND NEW SYSTEMS.
- ALL NEW WORK SHALL BE HELD AS HIGH AS POSSIBLE IN ORDER TO MAINTAIN LISTED CEILING HEIGHTS.
- AT THE COMMENCEMENT OF EACH WORK DAY OR SCHEDULED WORKING PERIOD, CONTRACTOR SHALL REPLACE ANY EXPOSED CEILING AREAS WITH EXISTING CEILING TILES OR HEAVY PLASTIC. NO CEILINGS ARE TO BE LEFT EXPOSED WITHOUT AUTHORIZATION FROM THE C.O.T.R. AND ICRA PERSONNEL.
- CONTRACTOR SHALL PROVIDE TEMPORARY HEATING AND COOLING DURING CONSTRUCTION IF AREAS BECOME INOPERABLE FOR STAFF.

KEYED NOTES: (X) NOTE: NOT ALL KEYNOTES ARE USED ON EVERY SHEET.

- REFER TO SHEET MH-104 FOR SPRINKLER PIPING IN THIS AREA.
- NEW 1-1/4" CONDENSATE DRAIN PIPING TO FLOOR BELOW.
- NEW CHILLED WATER PIPING FROM FLOOR BELOW. VERIFY EXACT ROUTING TO MAKEUP AIR UNIT WITH AVAILABLE AND ACCESSIBLE SPACES.
- NEW GLYCOL PIPING. VERIFY EXACT ROUTING TO MAKEUP AIR UNIT WITH AVAILABLE AND ACCESSIBLE SPACES.
- ELECTRIC HUMIDIFIER. INSTALL AT ELEVATION TO ALLOW GRAVITY DRAIN.
- NEW 3/4" DOMESTIC COLD WATER FROM PLUMBING CHASE ON FLOOR BELOW.
- NEW UNIT HEATER. CONNECT TO EXISTING GLYCOL PIPING.
- REPLACE EXISTING GLYCOL SYSTEM PIPING, PUMP, EXPANSION TANK, AIR SEPARATOR, FEEDER & CONTROLS WITH NEW GLYCOL PIPING, EQUIPMENT, & CONTROLS. SEE ENLARGED PLAN, THIS SHEET.
- CONNECT NEW PIPING IN PHASE-C.
- PROVIDE THERMOMETER, PRESSURE GAUGE, TEMPERATURE SENSOR AND PRESSURE SENSOR ABOVE CEILING ON EACH PIPE AT THIS POINT.

NOTE

SUBMIT COMPLETE CONSOLIDATED AND COORDINATED LAYOUT DRAWINGS FOR ALL NEW SYSTEMS, AND FOR EXISTING SYSTEMS THAT ARE IN THE SAME AREAS. REFER TO SECTION 00 72 00, GENERAL CONDITIONS, ARTICLE, SUBCONTRACTS AND WORK COORDINATION. REFER TO SPECIFICATION SECTION 23 05 11, 1.4/L.

BID DOCUMENTS

CONSULTANTS:		ARCHITECT/ENGINEERS:		Drawing Title BUILDING 29 - ATTIC FLOOR PLAN HVAC PIPING - NEW WORK		Project Title REPLACE HVAC B-29		Project Number 596-09-105		Office of Construction and Facilities Management Department of Veterans Affairs	
				Review For Design Concept Only <i>[Signature]</i> COTR-DESIGN-B-29 02-2012		Location VA MEDICAL CENTER, LEX., KY		Building Number B-29 (LD)			
Revisions:		Date				Date February 08, 2012		Checked NCM			
				400 E. Vine, Ste 400, Lexington, KY 40507 859.254.6623 Fax 859.259.1877				Drawing Number MP-104		Dwg. 35 of 61	