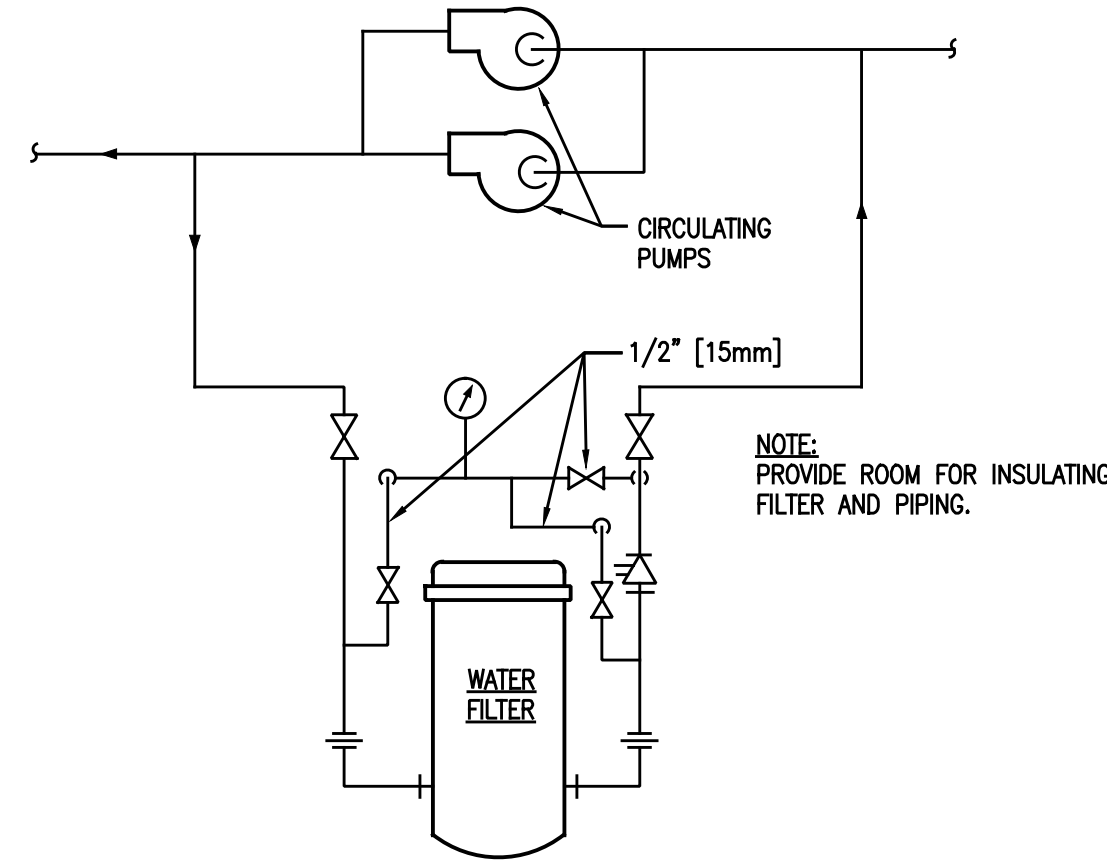


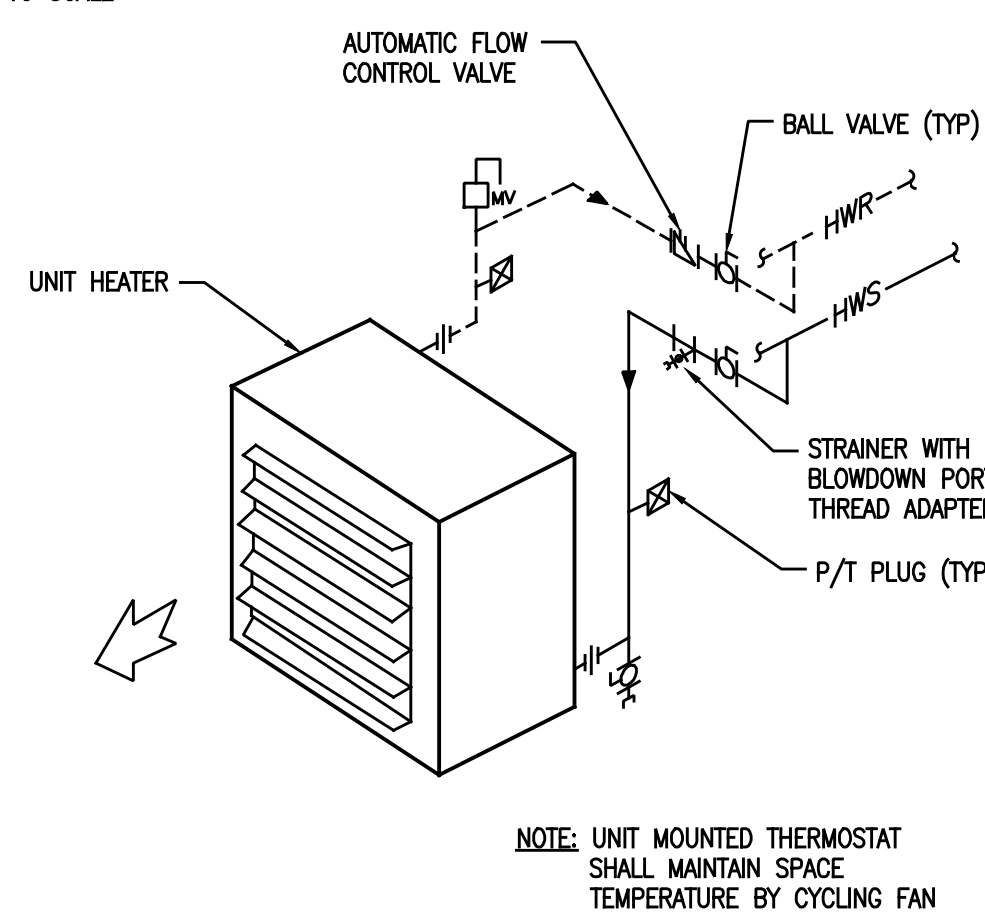
A TYPICAL METHOD OF SECURING HANGER RODS IN CONCRETE SLABS AND BEAMS

NOT TO SCALE



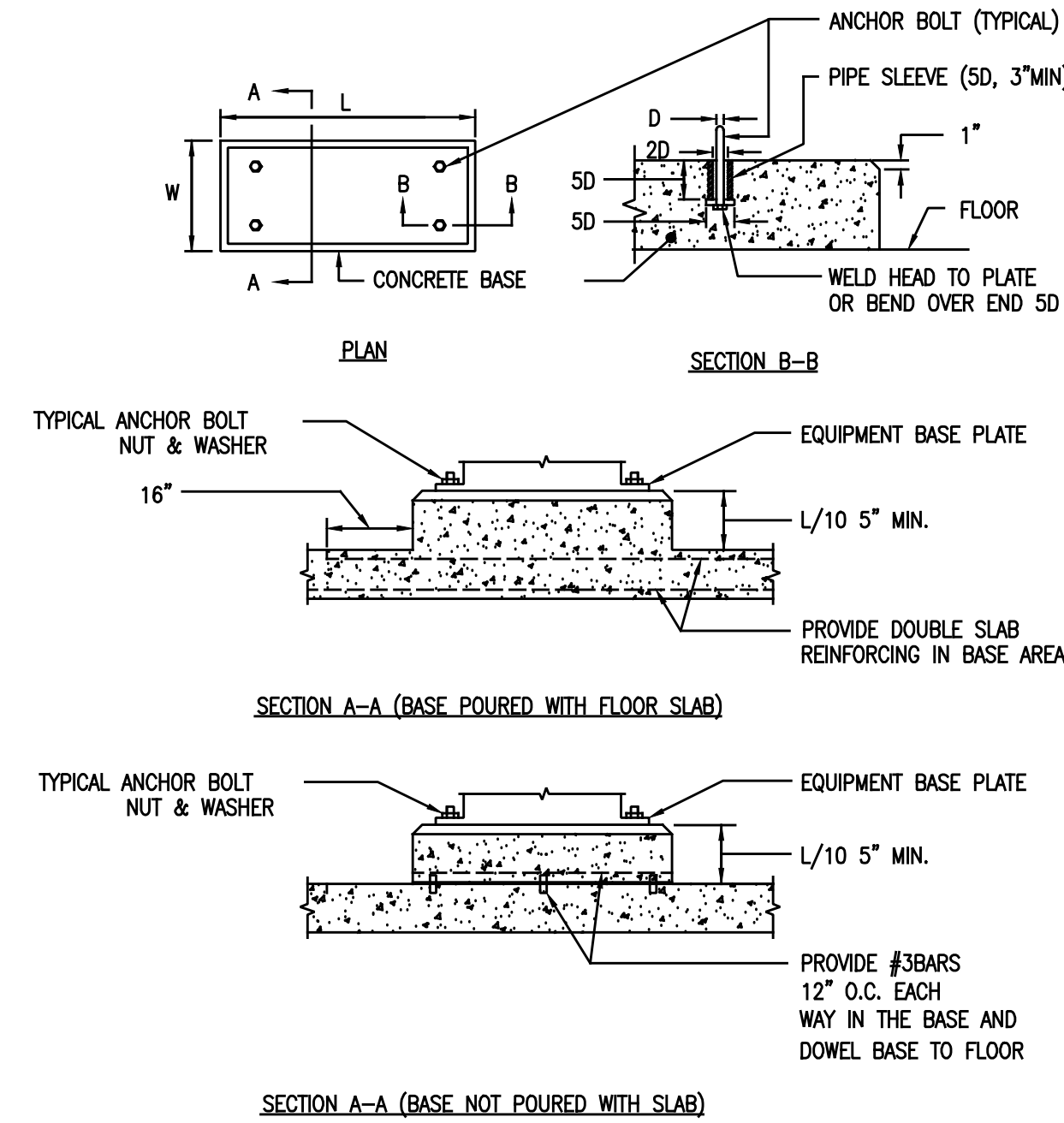
E TYPICAL PIPING CONNECTIONS TO WATER FILTERS FOR HEATING HOT WATER SYSTEMS

NOT TO SCALE



I TYPICAL PIPING CONNECTIONS TO HORIZONTAL HOT WATER UNIT HEATERS

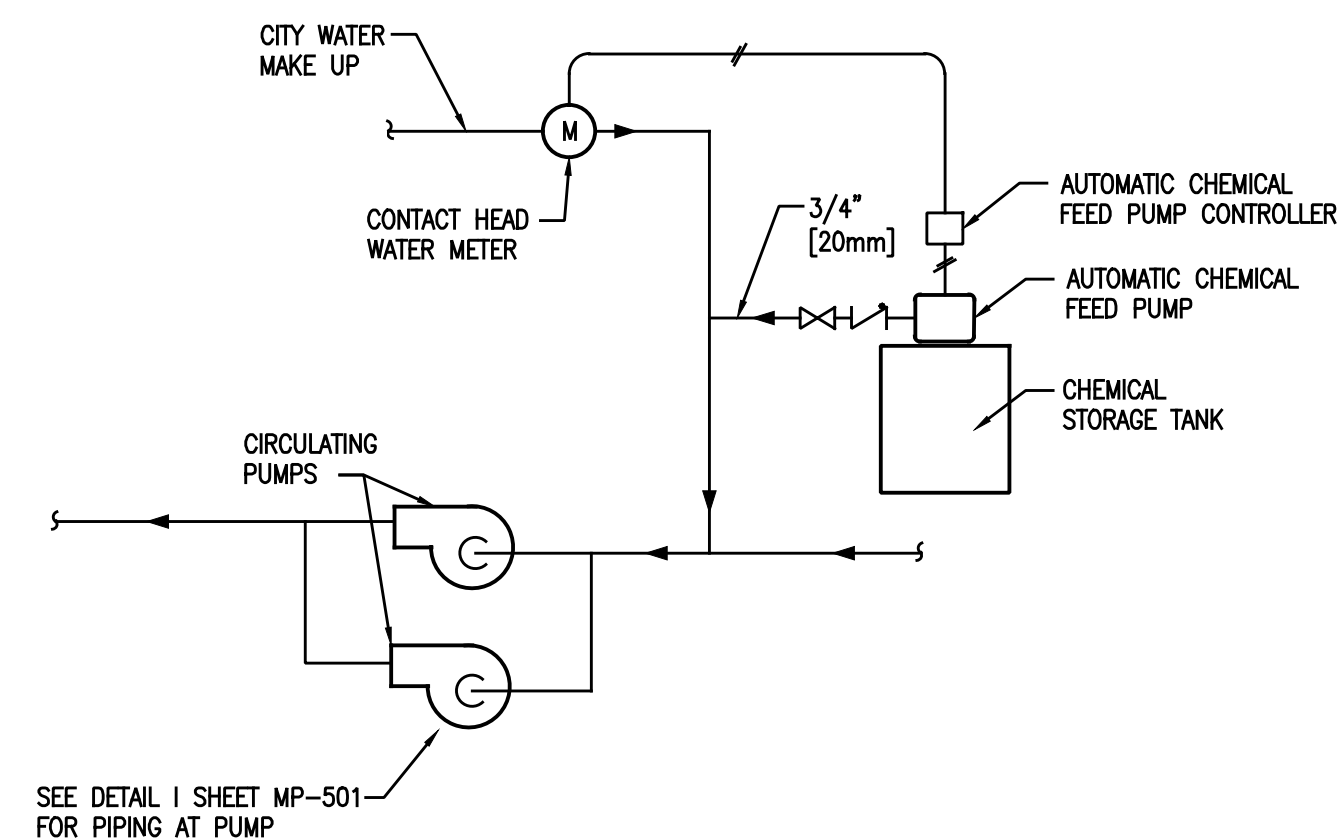
NOT TO SCALE



- NOTES:
1. L AND W DIMENSIONS SHALL BE 6 IN. (150 MM) GREATER THAN THE EQUIPMENT BASE PLATE.

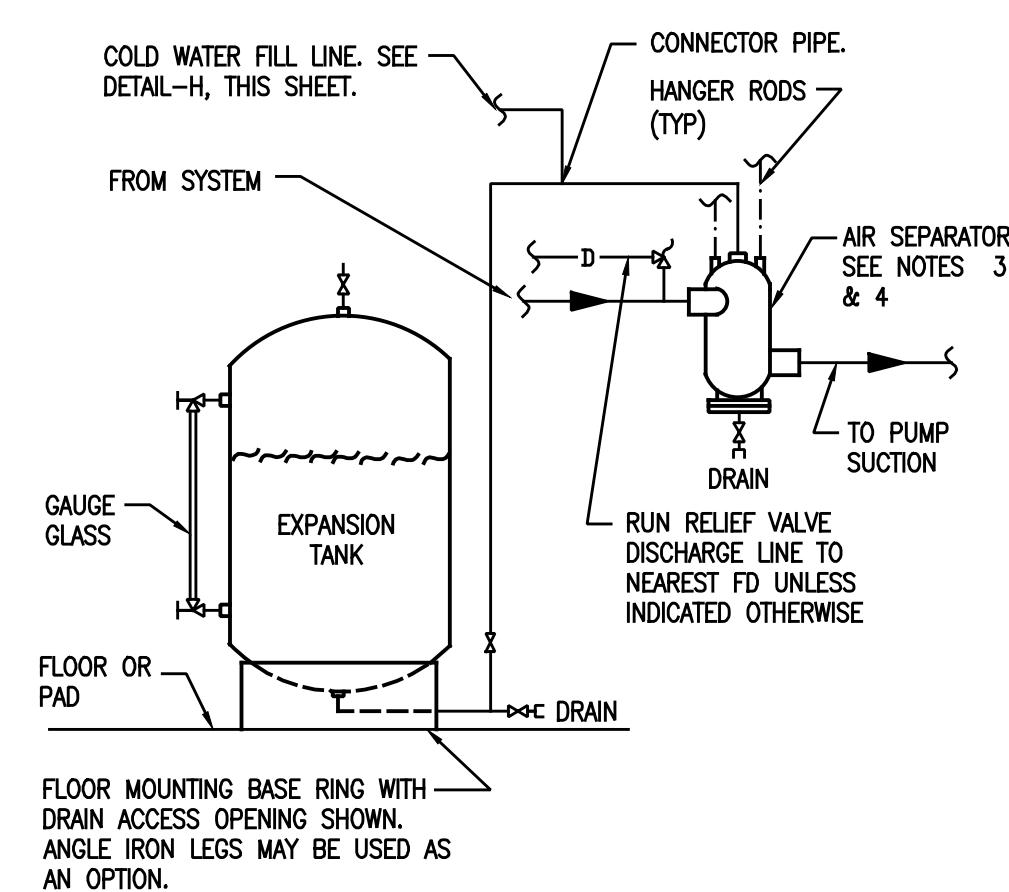
B CONCRETE EQUIPMENT BASES

NOT TO SCALE



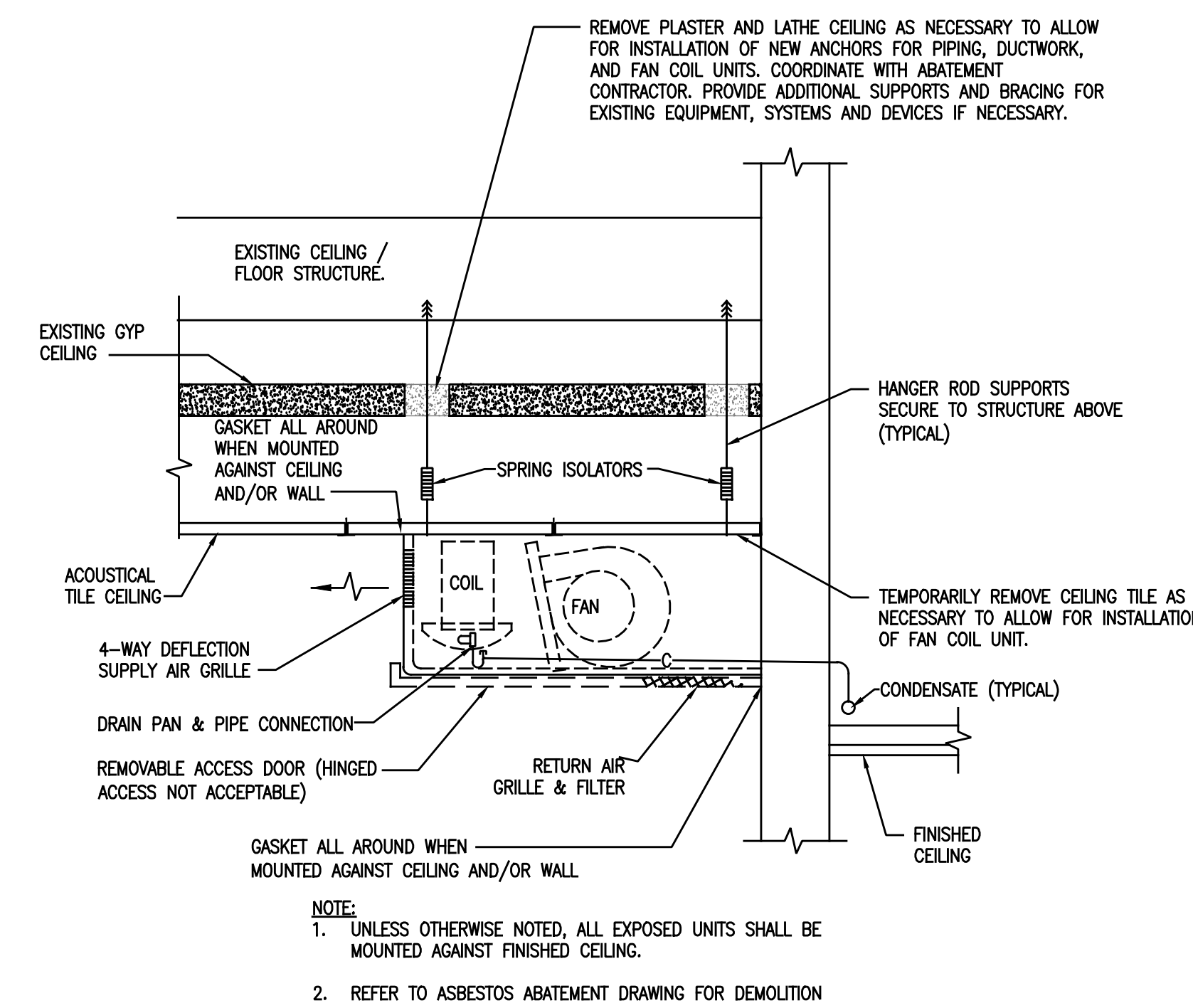
F TYPICAL HEATING HOT WATER CHEMICAL TREATMENT

NOT TO SCALE



J AIR CONTROL AND PIPING CONNECTIONS FOR HEATING HOT WATER SYSTEMS WITH FLOOR MOUNTED EXPANSION TANK

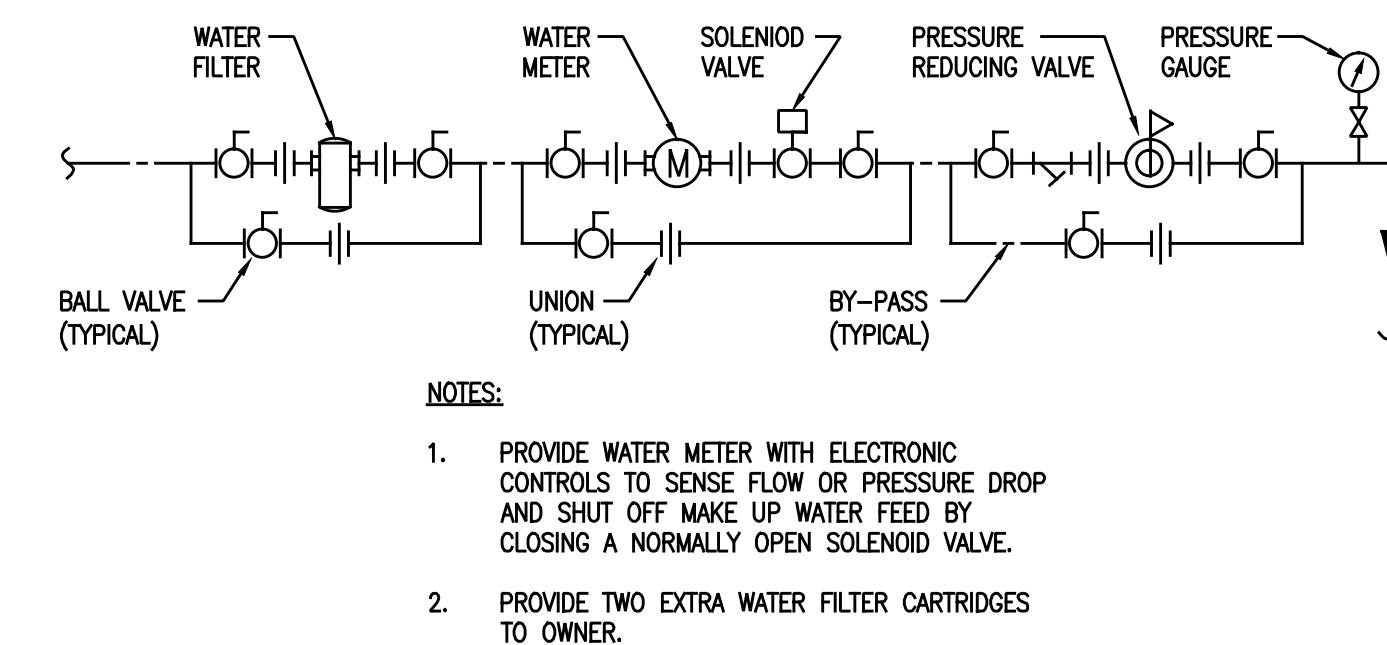
NOT TO SCALE



- NOTE:
1. UNLESS OTHERWISE NOTED, ALL EXPOSED UNITS SHALL BE MOUNTED AGAINST FINISHED CEILING.
 2. REFER TO ASBESTOS ABATEMENT DRAWING FOR DEMOLITION

C EXPOSED HORIZONTAL FAN COIL UNIT #7- #11 MOUNTING DETAIL

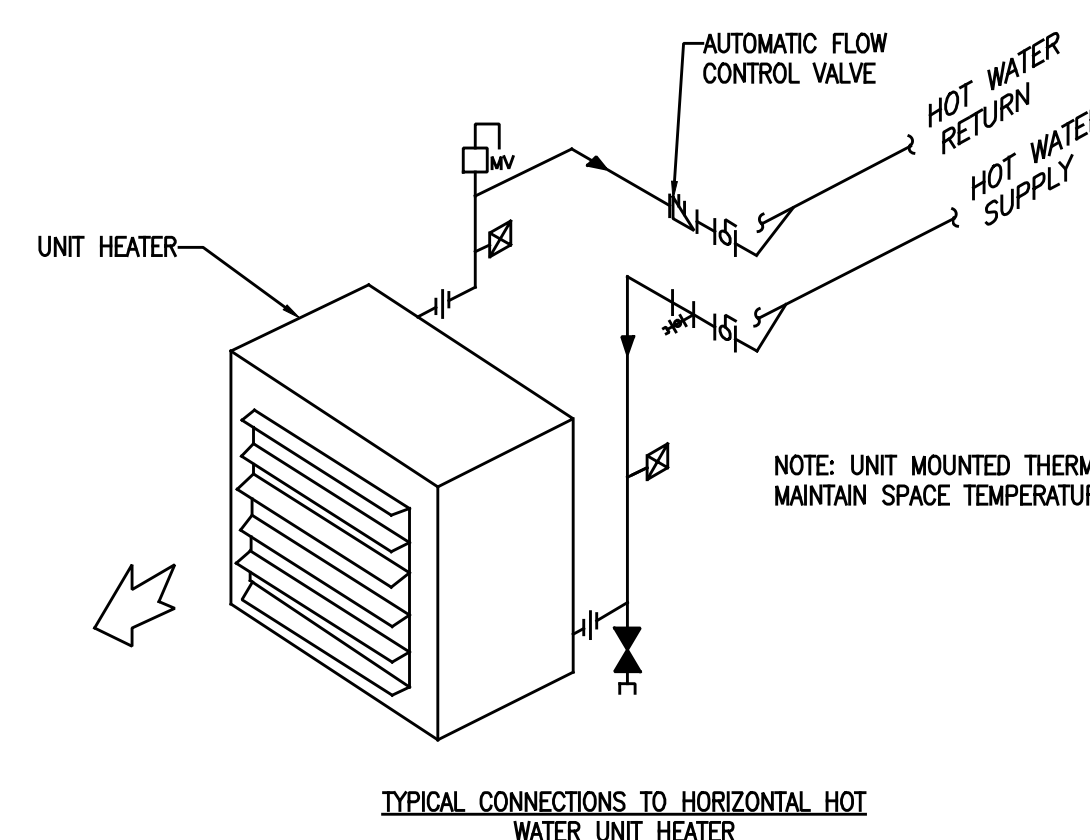
NOT TO SCALE



- NOTES:
1. PROVIDE WATER METER WITH ELECTRONIC CONTROLS TO SENSE FLOW OR PRESSURE DROP AND SHUT OFF MAKE UP WATER FEED BY CLOSING A NORMALLY OPEN SOLENOID VALVE.
 2. PROVIDE TWO EXTRA WATER FILTER CARTRIDGES TO OWNER.

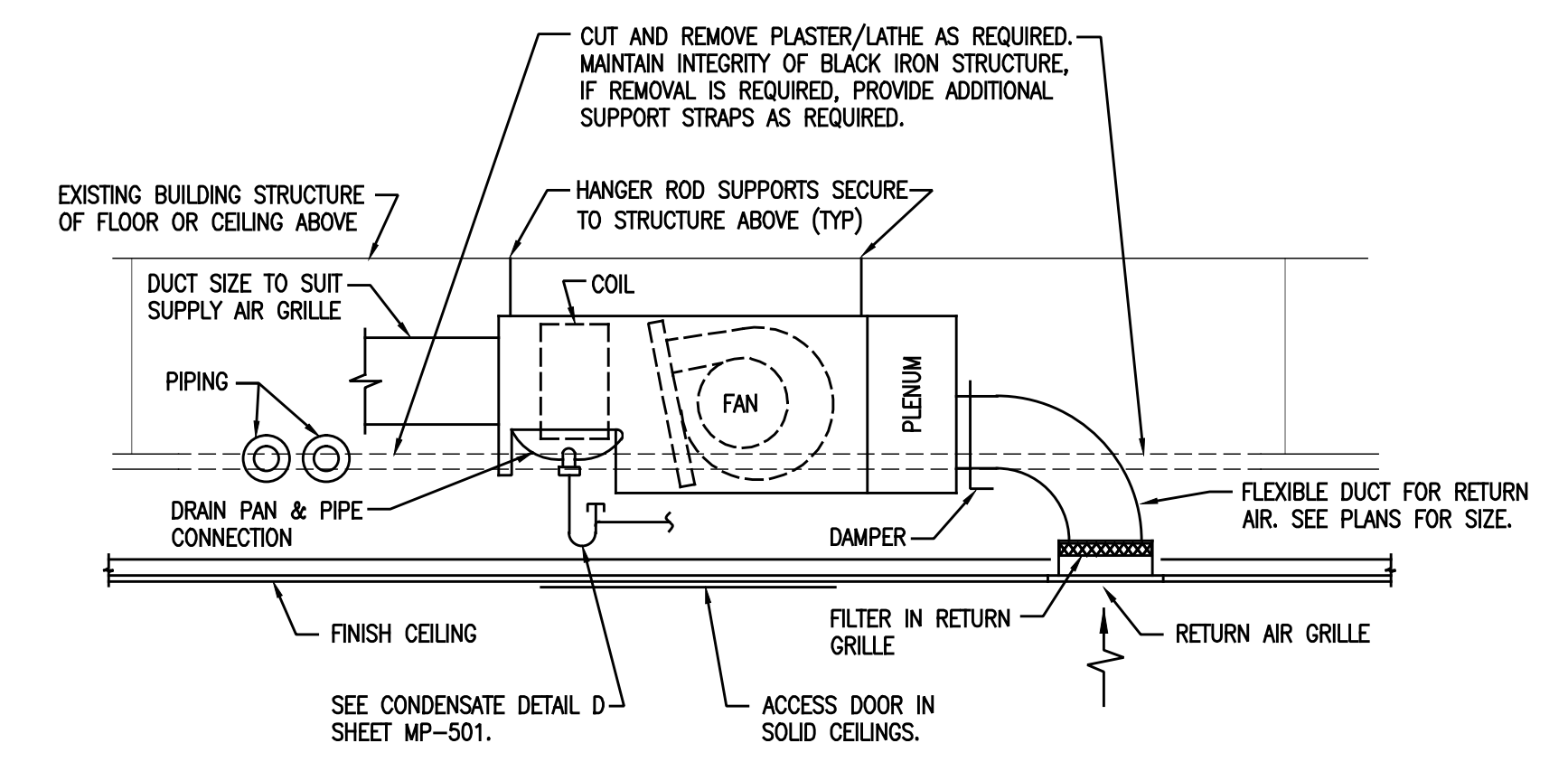
G HEATING HOT WATER SYSTEMS MAKE UP WATER

NOT TO SCALE



K UNIT HEATERS (HOT WATER) PIPING CONNECTIONS

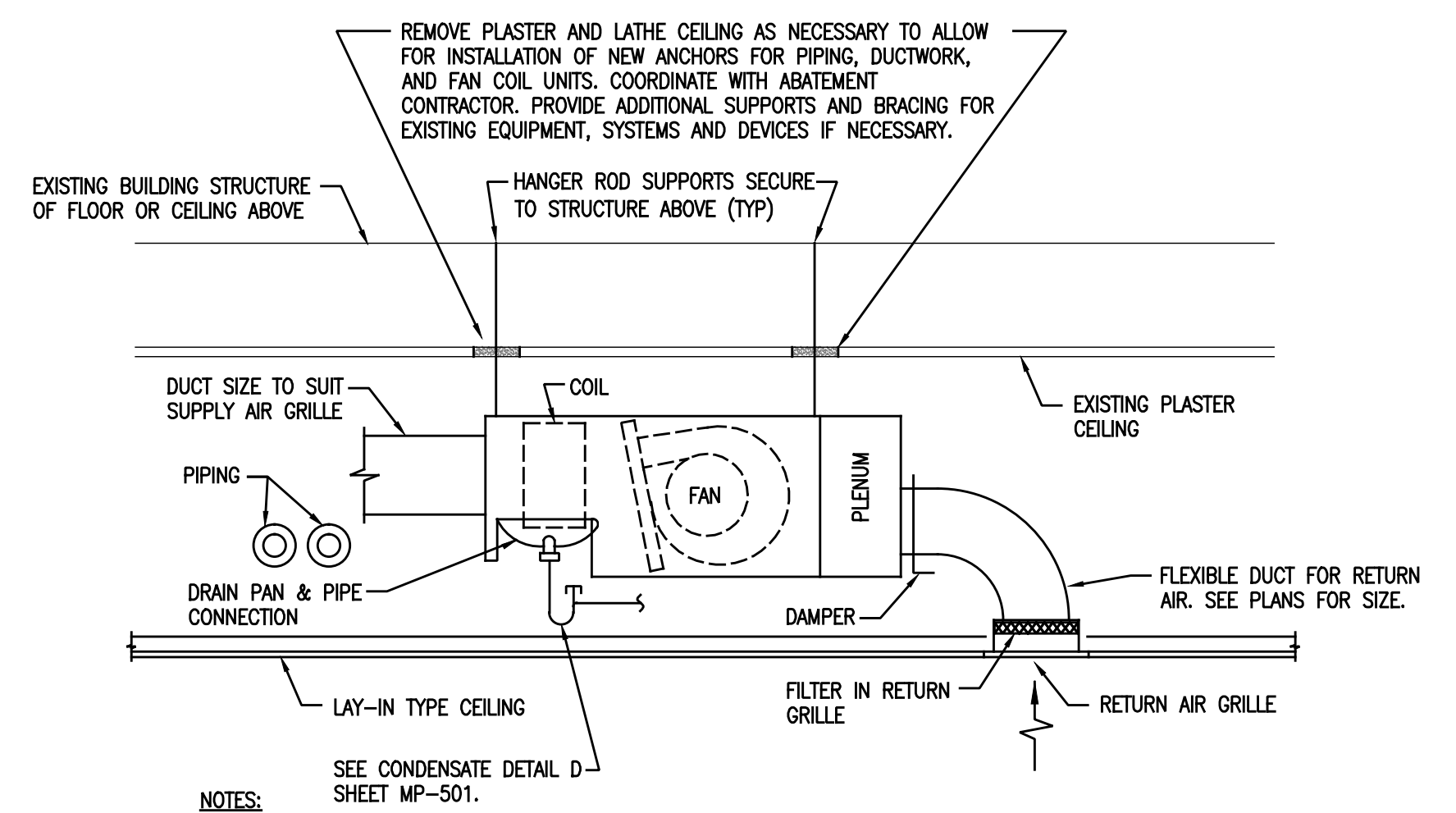
NOT TO SCALE



- NOTES:
1. RETURN AIR PLENUM AS SHOWN SHALL BE SUPPLIED BY MANUFACTURER OF FAN COIL UNIT.
 2. SEE FAN COIL UNIT SCHEDULE FOR PIPE SIZES.
 3. DUCTWORK SHALL SUIT FAN COIL UNIT FURNISHED.

D CONCEALED HORIZONTAL FAN COIL UNIT WITH CEILING REMOVAL & MOUNTING

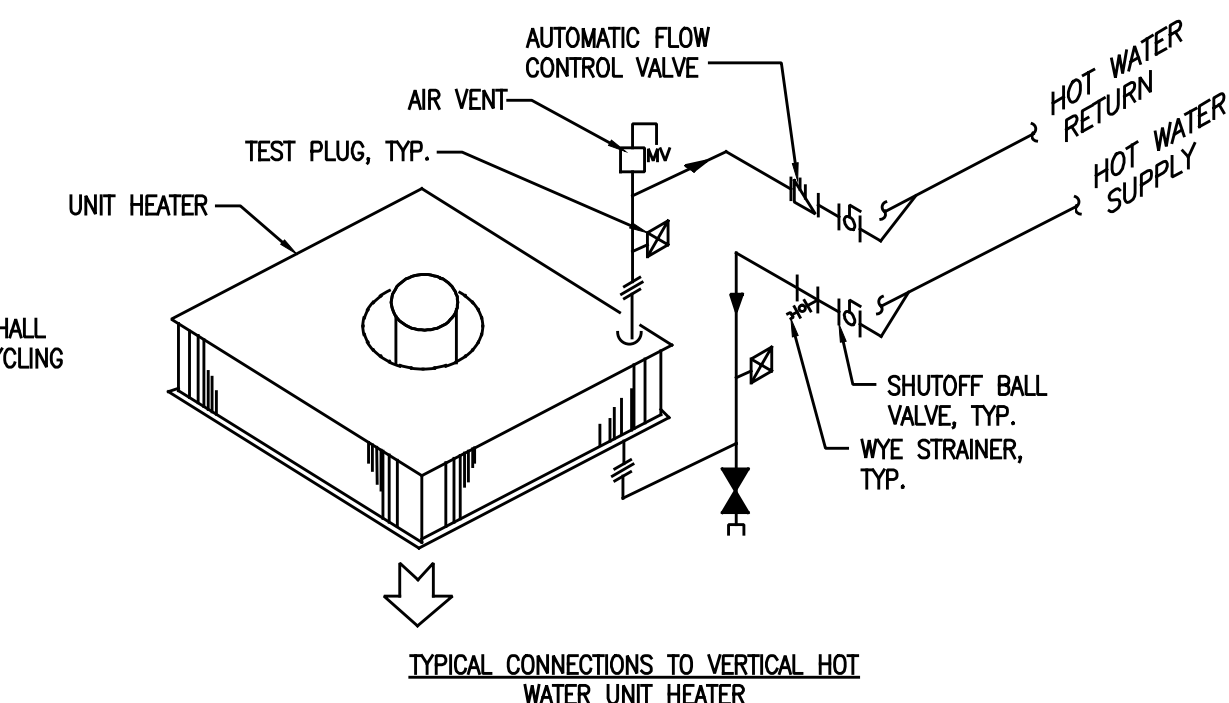
NOT TO SCALE



- NOTES:
1. RETURN AIR PLENUM AS SHOWN SHALL BE SUPPLIED BY MANUFACTURER OF FAN COIL UNIT.
 2. SEE FAN COIL UNIT SCHEDULE FOR PIPE SIZES.
 3. DUCTWORK SHALL SUIT FAN COIL UNIT FURNISHED.



H CONCEALED HORIZONTAL FAN COIL UNIT MOUNTING BELOW PLASTER CEILING

NOT TO SCALE



K UNIT HEATERS (HOT WATER) PIPING CONNECTIONS

NOT TO SCALE

		CONSULTANTS:				ARCHITECT/ENGINEERS:		Drawing Title BUILDING - 29 MECHANICAL DETAILS - PIPING		Project Title REPLACE HVAC B-29		Project Number 596-09-105		Office of Construction and Facilities Management			
						 2/8/12		Review For Design Concept Only  CONTR. DESIGN B-29 02-2012		Location VA MEDICAL CENTER, LEX., KY		Building Number B-29 (LD)				Drawing Number MP-502	
Revisions:		Date		Date February 08, 2012						Checked NCM		Drawn GI				Dwg. 37 of 61	
						400 E. Vine, Ste 400, Lexington, KY 40507 859.254.6623 Fax 859.259.1877								Department of Veterans Affairs			