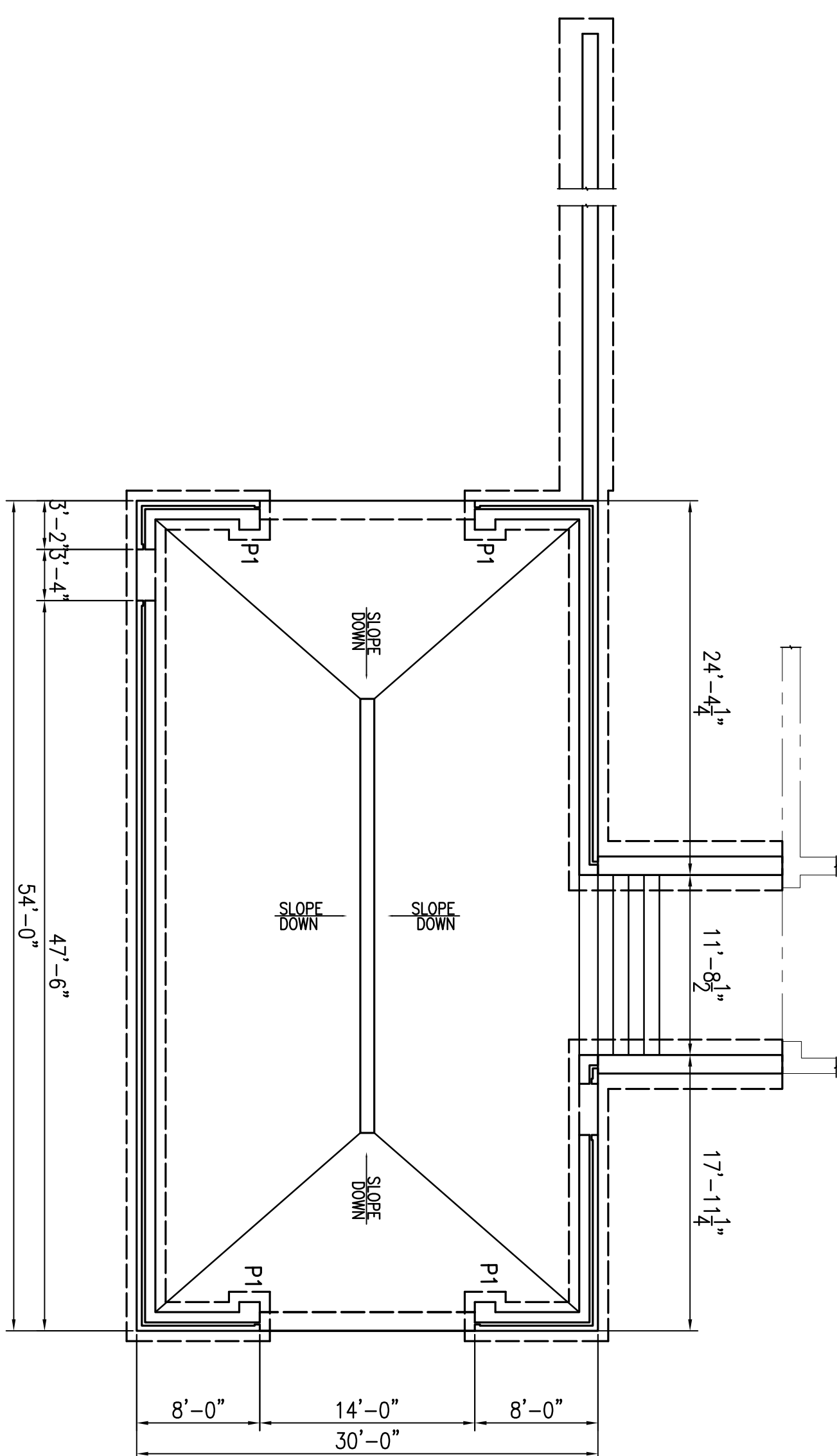


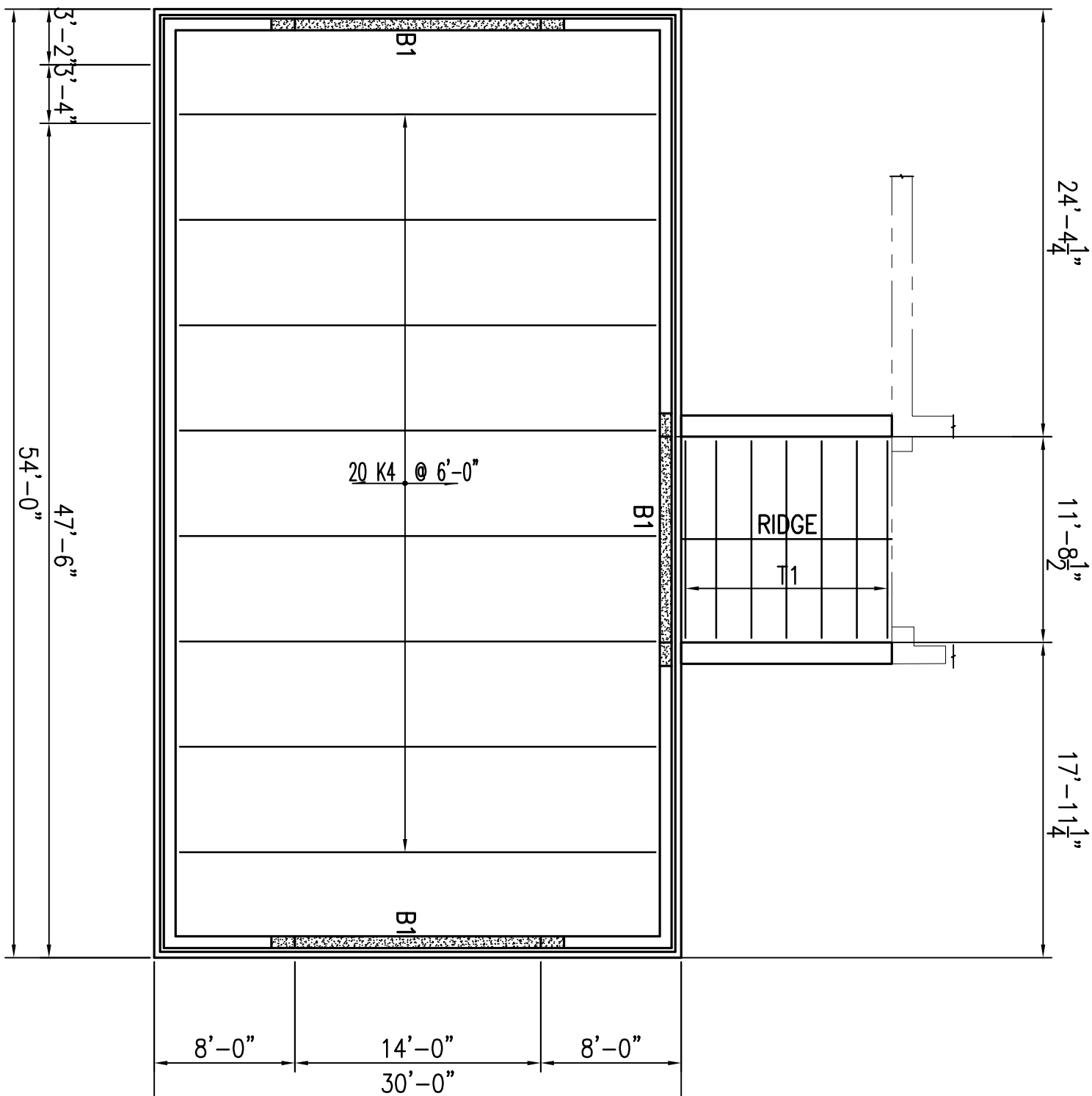
FOUNDATION AND FLOOR PLAN

SCALE: 1/8"=1'-0"



ROOF FRAMING PLAN

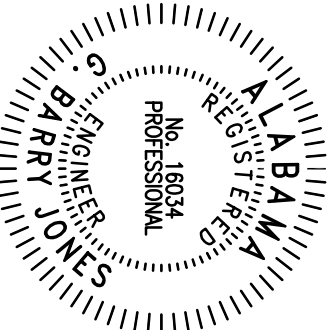
SCALE: $1/8'' = 1' - 0''$




1. JOIST BEARING ELEVATIONS: 18'-0" AFT. UNLESS NOTED.
2. ROOF CONSTRUCTION: 1- $\frac{1}{2}$ " 22GA. ROOF DECK ON STEEL JOIST, BEAMS AND JOIST GIRDERS. SEE GENERAL NOTES.
3. SPACE JOISTS EVENLY BETWEEN WALLS OR COLUMN CENTERLINES, UNLESS NOTED.
4. HANGER LOCKS FOR PILING: HANGER WITH 3" IN DIAMETER MUST BE COMPAIGNED BY GENERAL CONTRACTOR WITH THE MANUFACTURER.
5. ROOF DECK ATTACHMENT: 5/8" PIDDLE WELDS ON 36" PATTERN W/ #10 SLOPE FASTENERS PER SPAN.

1. TOP OF FINISH FLOOR ELEVATION 428.17' UNLESS NOTED.
2. TOP OF FOOTING ELEVATION 426.17' UNLESS NOTED.
3. GENERAL CONTRACTOR COORDINATE LOCATION OF ALL REQUIRED FOOTING STEPS WITH CIVIL, PLUMBING AND UTILITY DRAWINGS, AND EXISTING CONDITIONS.
4. GENERAL CONTRACTOR SHALL COORDINATE ALL FOOTINGS, INCLUDING STEPS AND REINFORCING.
5. 8" SUBS ON GRADE, SEE GENERAL NOTES.

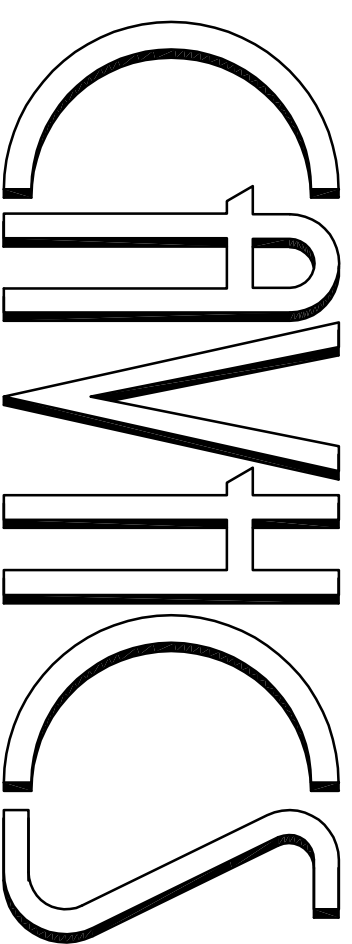
Revisions	Date
-----------	------



MCE  **MILLS-CONOLLY**
ENGINEERING, P.C.

8218 Old Federal Road
Montgomery, AL 36117
TELEPHONE: (334) 270-0010
FAX: (334) 270-0040

Montgomery, AL 36117
FAX: (334) 270-0040



Central Alabama Veterans Health Care System

Approved:	Approved:	Project Title			Date
Approved:	Approved:	MODIFY FIRE BAY, B-15 CENTRAL ALABAMA VETERANS HEALTH CARE SYSTEM TUSKEGEE, ALABAMA			6/14/11
Approved:	Approved:	Building Number			Project No.
Approved:	Approved:	15	Checked	Drawn	619-10-455
Approved:	Approved:	Clinical Representative			DRAWING NO. S2.1 Dwg. 9 of 16
Approved:	Approved:	Location			Veterans Administration
Approved:	Approved:	East Campus, Tuskegee, AL			