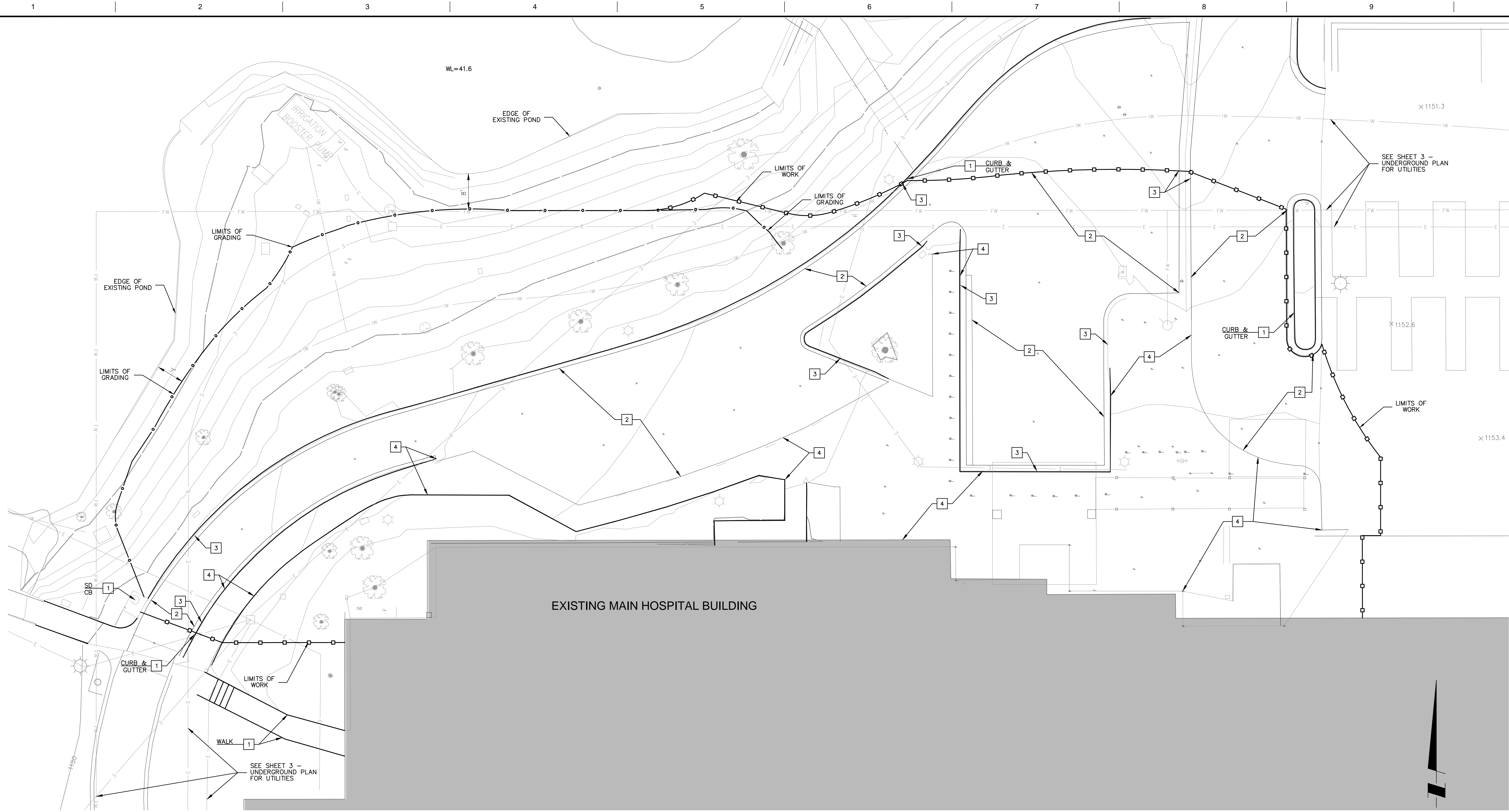


three inches = one foot
one and one half inches = one foot
one inch = one foot
three quarters inch = one foot
one half inch = one foot
three eighths inch = one foot
one quarter inch = one foot
one eighth inch = one foot



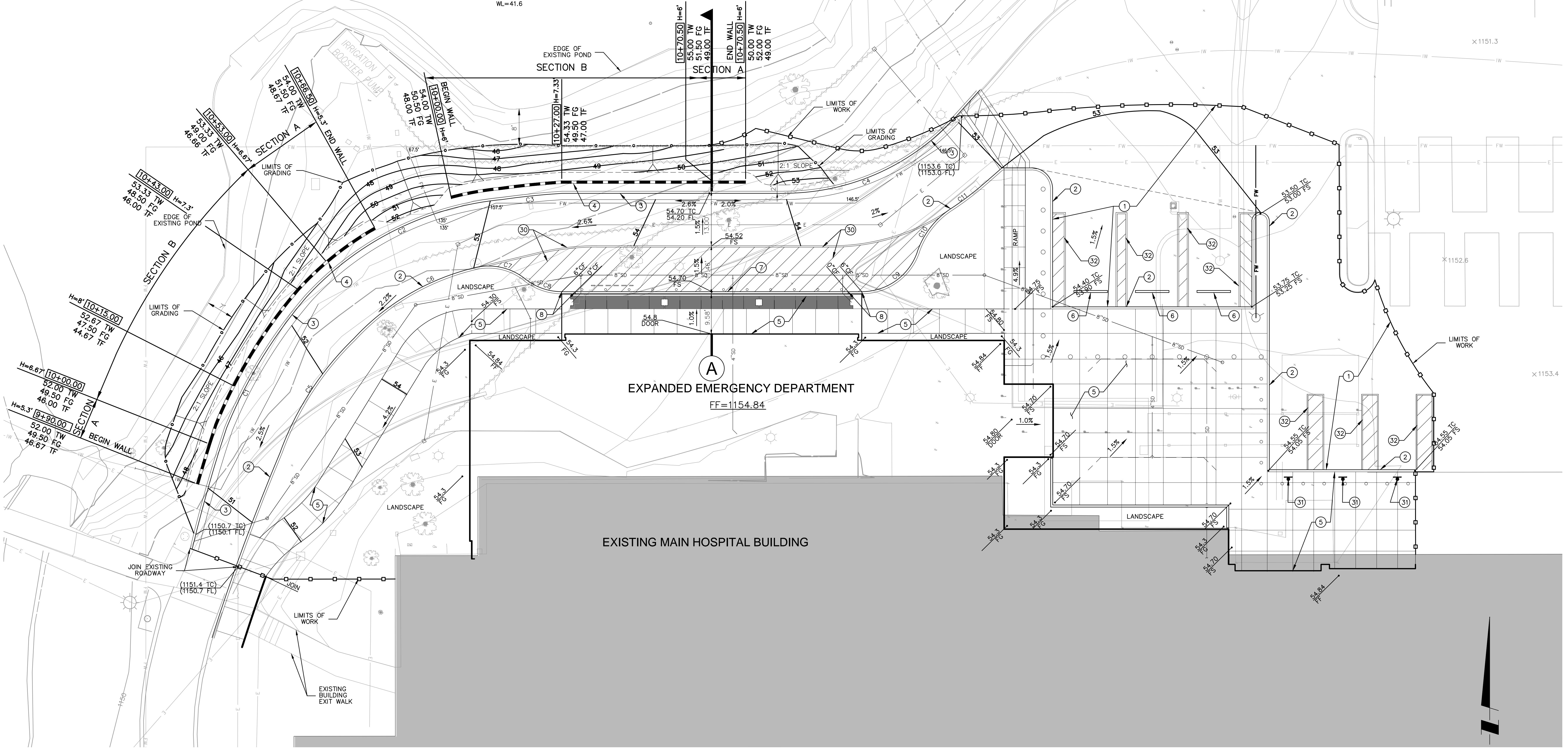
- CONSTRUCTION NOTES**
- 1 PROTECT IN PLACE
 - 2 REMOVE EXISTING A.C. PAVEMENT
 - 3 REMOVE EXISTING CONCRETE CURB (OR CURB & GUTTER)
 - 4 REMOVE EXISTING CONCRETE SIDEWALK

- LEGEND**
- H WALL HEIGHT
 - LP LOW POINT
 - HP HIGH POINT
 - FF FINISH FLOOR
 - FS FINISH SURFACE
 - FG FINISH GRADE
 - FL FLOWLINE
 - FC TOP OF CURB
 - TW TOP OF WALL
 - TF TOP OF FOOTING
 - LIMITS OF GRADING
 - LIMITS OF WORK
 - FW FIRE WATER LINE
 - E ELECTRICAL LINE
 - IW IRRIGATION WATER LINE

DATUM NOTE:
ADD 1100.00 TO ELEVATIONS (54.00 = 1154.00)

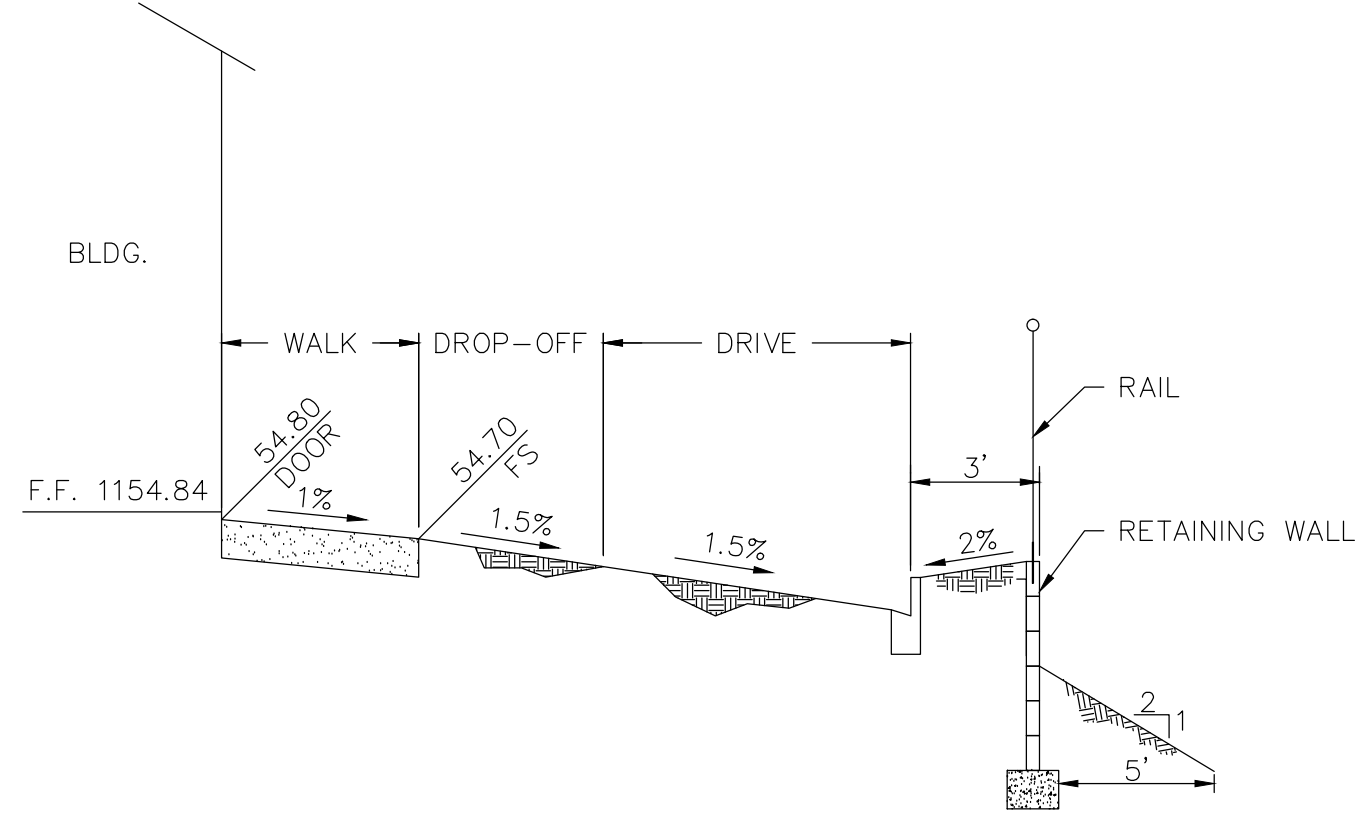
ARCHITECTS/ENGINEERS PRINCIPAL Michael Lehman, AIA PROJECT MANAGER Ruby Carr, LEED AP PROJECT ARCH/ENG PROJECT DESIGNER 15231 Laguna Canyon Road, Suite 200 Irvine, CA 92618 Tel: 949-417-7550 Fax: 949-585-9391		CONSULTANTS P S O M A S 3 Hutton Centre Drive Suite 200 Santa Ana, CA 92707 (714) 751-7373 Fax(714) 545-8883 J.N. 2EWO10400		EwingCole Project Number 20120401		Approved: VA Project Engineer Approved: Chief, Project Section Approved: Chief, Maint., & Operations Office Approved: Chief, Engineering Dept.		Approved: Chief, Env. of Care Dept. Approved: Chief, Env. Management Dept. Approved: Dir., Facilities Management Approved: Chief, Medical Officer		Drawing Title DEMOLITION PLAN Approved: VP, Administration Support Approved: C.E.O.		Project Title VA Loma Linda Healthcare System Expand Emergency Department Location 11201 BENTON STREET LOMA LINDA, CA 92357 Date 05.13.13		Project Number 605-330 Building Number 1 Drawing Number C-101 Dwg. 1 of 4		Office of Construction and Facilities Management Department of Veterans Affairs	
--	--	---	--	--------------------------------------	--	---	--	--	--	---	--	--	--	--	--	--	--

one eighth inch = one foot
one quarter inch = one foot
one half inch = one foot
one inch = one foot
three eighths inch = one foot
three quarters inch = one foot
one and one half inches = one foot
two inches = one foot
three inches = one foot



CURVE DATA :

	Δ/BEARING	R	L	T
C1	18d36°10"	114.15'	37.06'	18.70'
C2	41d43°29"	72.50'	51.63'	27.63'
C3	4d22°34"	194.17'	14.83'	7.42'
C4	47d59°42"	55.00'	46.07'	24.48'
C5	25d33°33"	72.18'	32.20'	16.37'
C6	33d50°13"	57.50'	33.95'	17.49'
C7	52d0°44"	14.00'	12.71'	6.83'
C8	38d33°36"	14.00'	9.42'	4.90'
C9	71d12°37"	14.00'	17.40'	10.02'
C10	37d58°22"	20.00'	13.26'	6.88'
C11	8d26°13"	72.80'	10.72'	5.37'



SIGNING & STRIPING NOTES

- 30 STRIPE 4-INCH SOLID WHITE CHEVRONS PER VA STANDARDS
- 31 INSTALL ACCESSIBLE PARKING SIGNS (ADA) PER DETAIL 31 ON SHEET 4
- 32 STRIPE ADA PAVEMENT MARKINGS PER PLAN

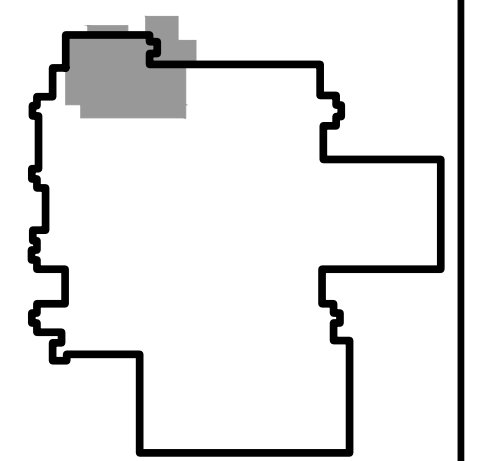
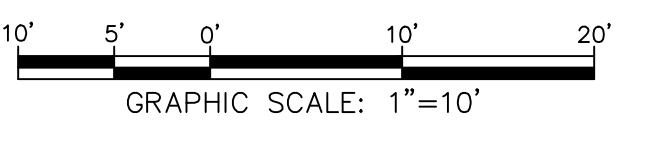
CONSTRUCTION NOTES

- 1 CONSTRUCT 4-INCH AC OVER 6-INCH A.B. PAVEMENT (SECTION TO BE CONFIRMED BY GEOTECH)
- 2 CONSTRUCT 6-INCH CURB ONLY PER DETAIL 2 ON SHEET 4
- 3 CONSTRUCT 6-INCH CURB AND GUTTER PER DETAIL 3 ON SHEET 4
- 4 CONSTRUCT RETAINING WALL PER DETAIL 4 ON SHEET 4
- 5 CONSTRUCT 4-INCH CONCRETE SIDEWALK PER DETAIL 5 ON SHEET 4
- 6 CONSTRUCT CONCRETE WHEELSTOP PER DETAIL 6 ON SHEET 4
- 7 CONSTRUCT 0-INCH CURB PER DETAIL 7 ON SHEET 4
- 8 CONSTRUCT 0" - 6" CURB PER DETAIL 8 ON SHEET 4

LEGEND

H	WALL HEIGHT
LP	LOW POINT
HP	HIGH POINT
FF	FINISH FLOOR
FS	FINISH SURFACE
FG	FINISH GRADE
FL	FLOWLINE
FC	TOP OF CURB
TW	TOP OF WALL
TF	TOP OF FOOTING
---	LIMITS OF GRADING
---	LIMITS OF WORK
---	RETAINING WALL
---	SD STORM DRAIN LINE
---	FW FIRE WATER LINE
---	E ELECTRICAL LINE
---	IW IRRIGATION WATER LINE
---	REMOVAL PER PLAN

DATUM NOTE:
ADD 1100.00 TO ELEVATIONS (54.00 = 1154.00)



ISSUED FOR 100% SUBMITTAL
CONSTRUCTION DRAWINGS

ARCHITECTS/ENGINEERS PRINCIPAL Michael Lehman, AIA PROJECT MANAGER Ruby Carr, LEED AP PROJECT ARCH/ENG PROJECT DESIGNER 15231 Laguna Canyon Road, Suite 200 Inglewood, CA 90218 Tel: 949-417-7550 Fax: 949-585-9391		CONSULTANTS P S O M A S 3 Hutton Centre Drive Suite 200 Santa Ana, CA 92707 (714) 751-7373 Fax (714) 545-8883 J.N. 2EWO10400		EwingCole Project Number 20120401		Approved: VA Project Engineer Approved: Chief, Project Section Approved: Chief, Maint., & Operations Office Approved: Chief, Engineering Dept.		Approved: Chief, Env. of Care Dept. Approved: Chief, Env. Management Dept. Approved: Dir., Facilities Management Approved: Chief, Medical Officer		Drawing Title GRADING PLAN		Project Title VA Loma Linda Healthcare System Expand Emergency Department		Project Number 605-330 Building Number 1		Office of Construction and Facilities Management Department of Veterans Affairs	
3 CONSTRUCTION DOCUMENT ISSUE 2 DESIGN DEVELOPMENT ISSUE 1 SCHEMATIC DESIGN ISSUE		05.13.13 04.15.13 10.29.12		05.13.13 04.15.13 10.29.12		Date		Date		Date		Date		Date		Date	

