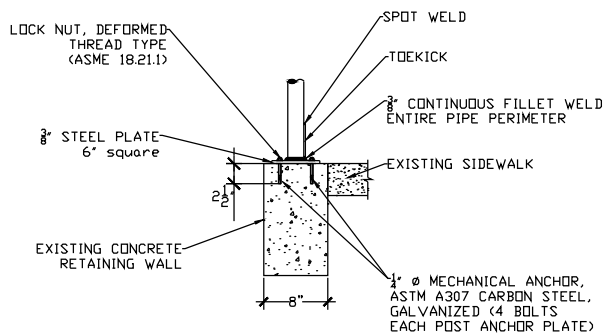



1 Handrail – West Elevation  
G2 Scale:  $\frac{1}{4}'' = 1'$



2 Post Anchor – Detail  
G2 Scale:  $\frac{1}{2}'' = 1'$

#### Drawing Notes:

1. Fill existing railing post holes with high-performance, non-shrinking cement grout.
2. All steel shall be 60,000 psi carbon steel, galvanized.
3. Railing shall be fabricated with NPS 1-1/2 (1.9" O.D.) steel pipe.
4. Welds shall have a National Association of Architectural Manufacturers Type 2 finish, with all irregularities and burrs removed. All welds shall be shop welds unless otherwise indicated.
5. Toekick shall be  $\frac{3}{16}''$  galvanized sheet steel.
6. All steel shall be prepped primed and painted in accordance with the specifications. Paint color shall be equivalent to Sherwin Williams SW2924, Woodsy Brown. Slight variations in shade may be acceptable, but shall be approved by the COTR.

Drawing Title <b>HANDRAIL INSTALLATION</b>	Project Title <b>INSTALL HANDRAIL &amp; CANOPY</b>	Project Number  Building Number 1	<b>NEBRASKA–WESTERN IOWA HEALTHCARE SYSTEM</b>  <b>OMAHA VAMC</b>  <b>Department of Veterans Affairs</b>
Notes XXXXXX	Location <b>OMAHA VAMC</b> Date 02/24/2012	Drawing Number <b>G2</b> Dwg 2 of 3	
	Checked CMW	Drawn CMW	