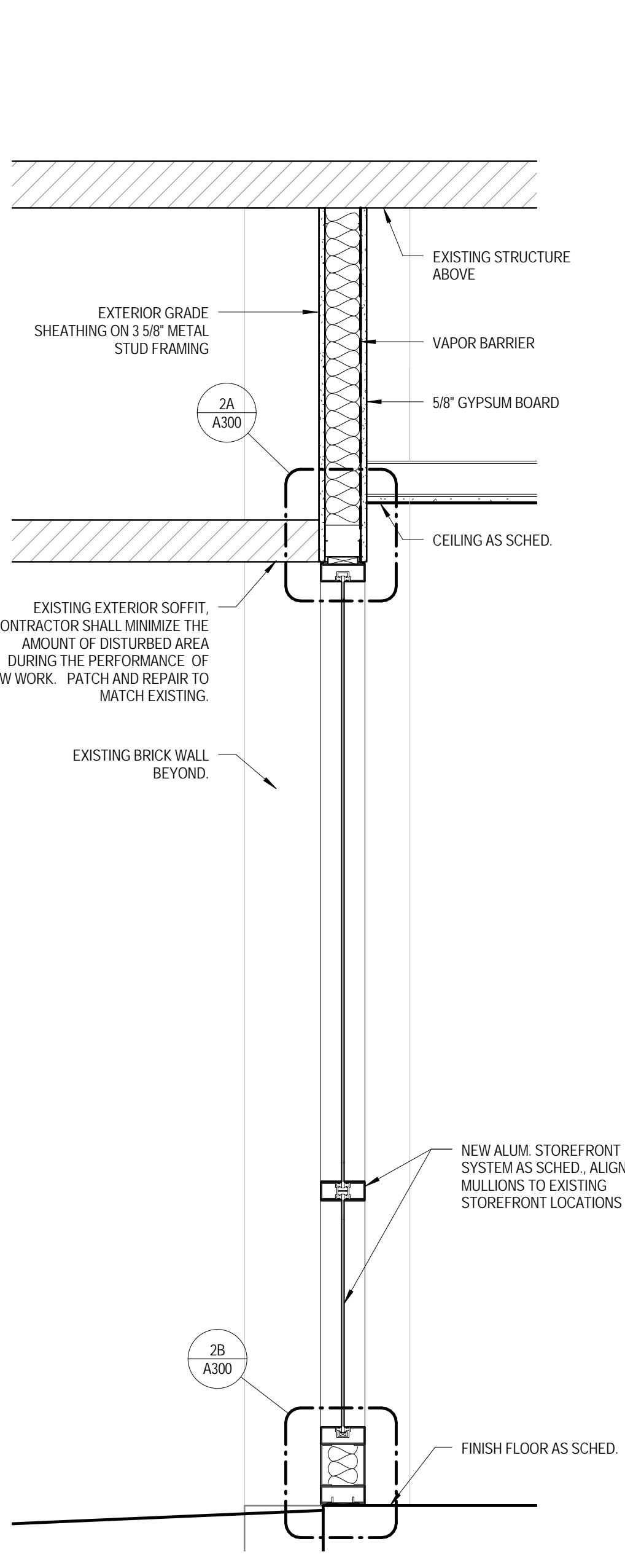
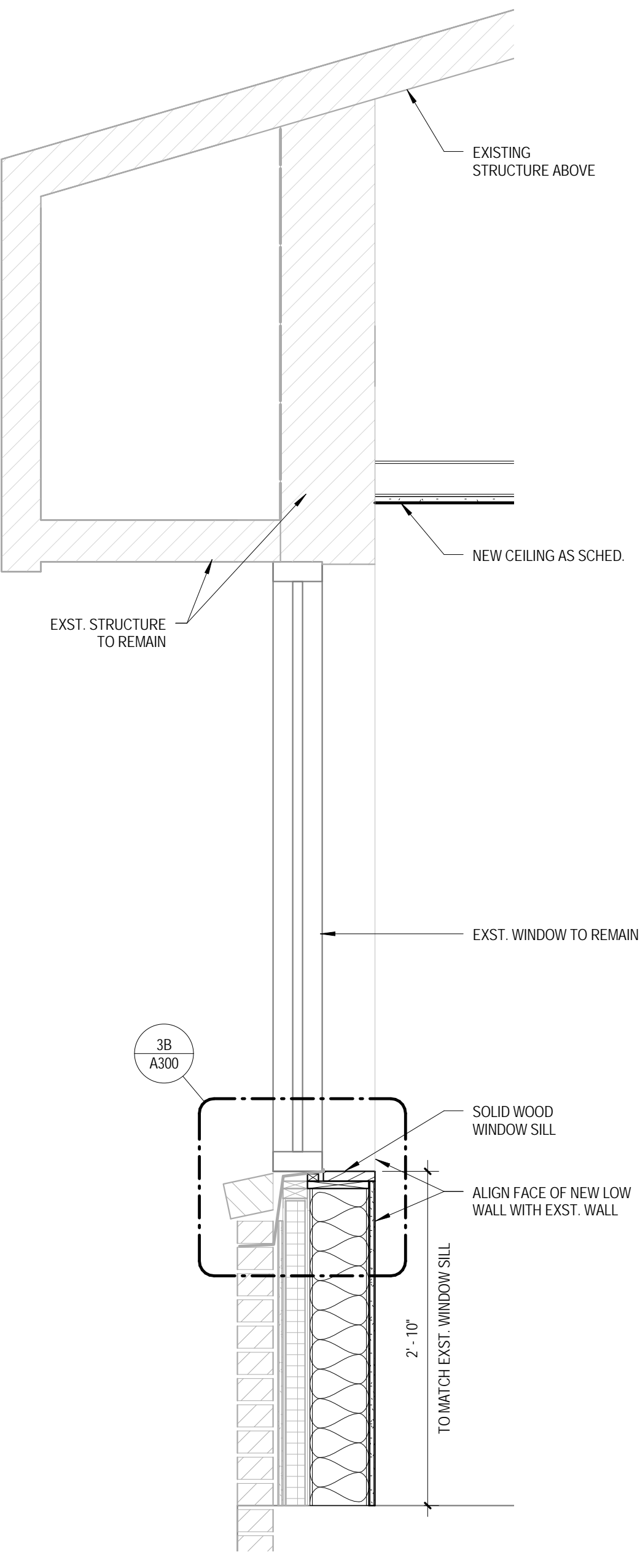


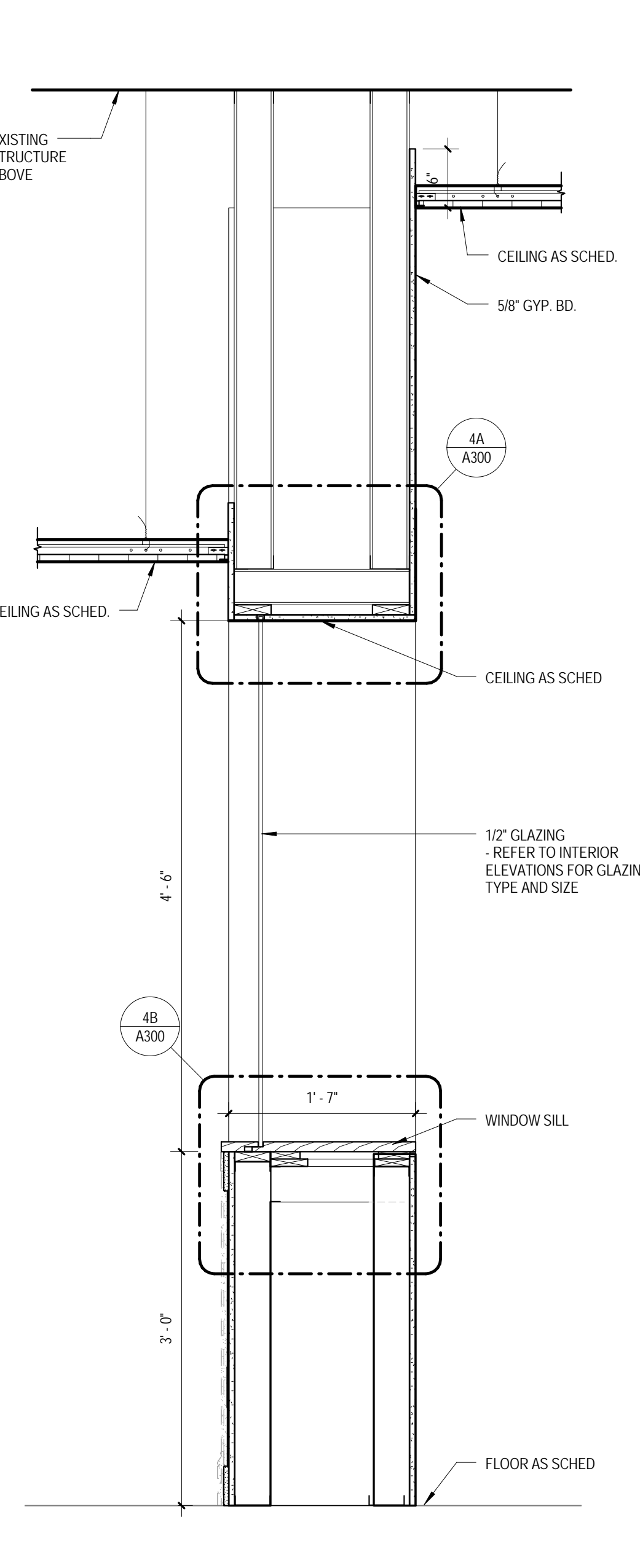
1 WALL SECTION @ NEW ENTRY DOOR
1' = 1'-0"



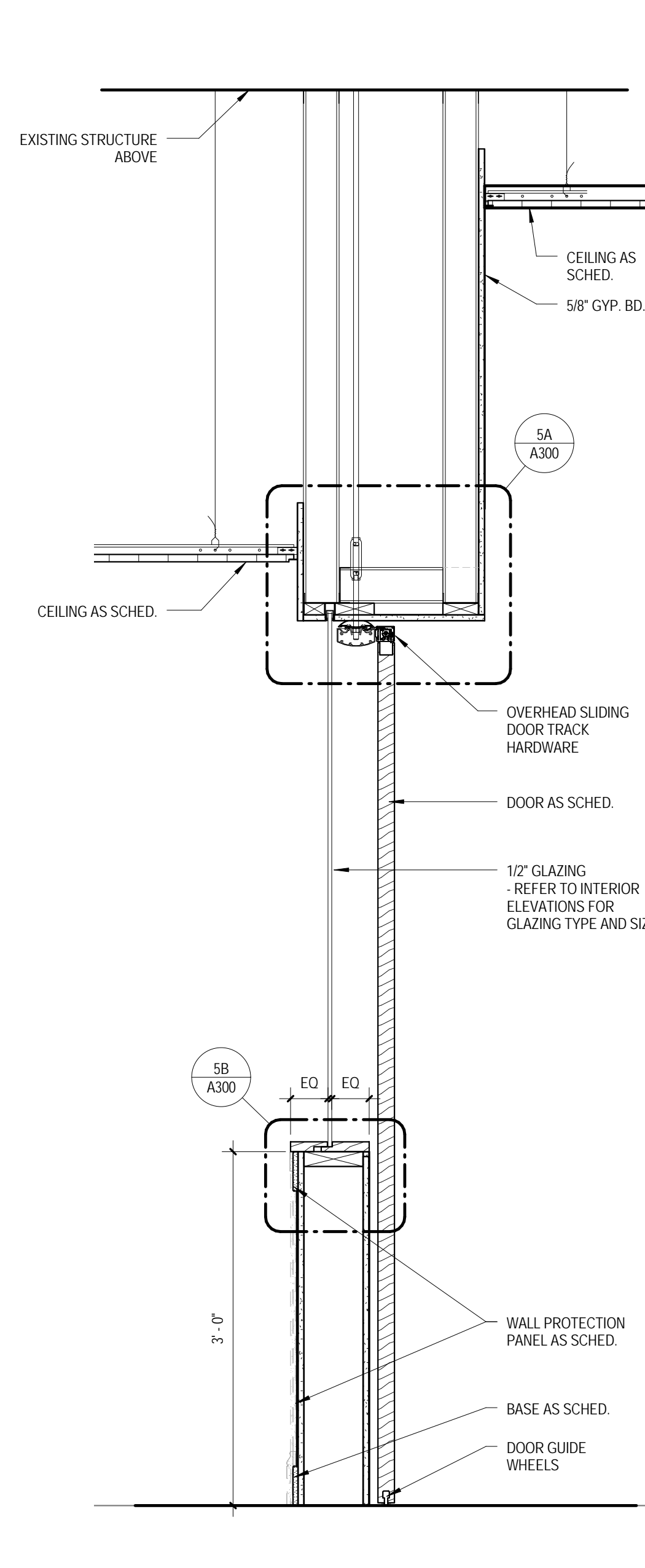
2 WALL SECTION @ NEW STOREFRONT
1' = 1'-0"



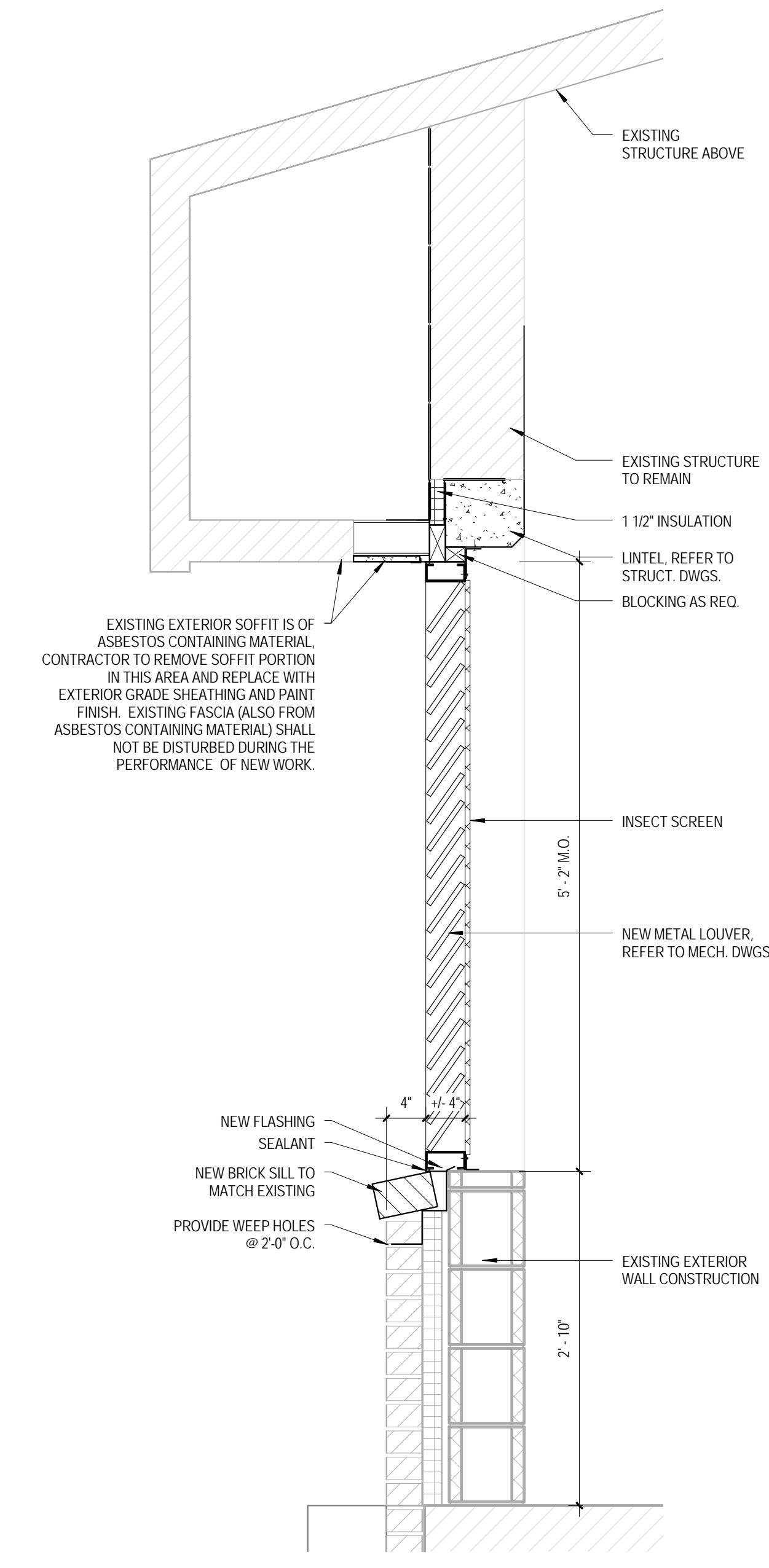
3 WALL SECTION @ EXST. WINDOW SILL
1' = 1'-0"



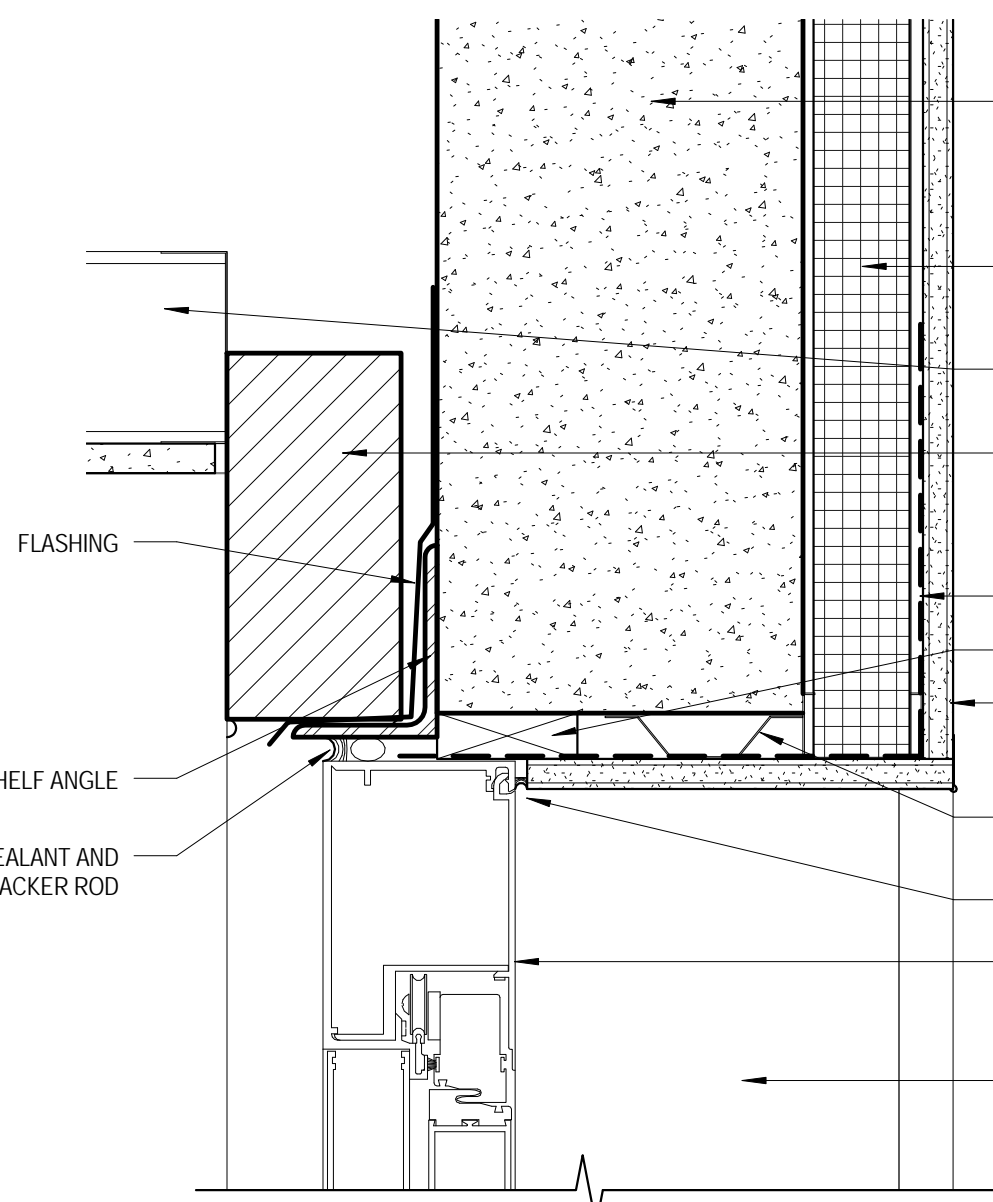
4 WALL SECTION @ DINING RM. WALL
1' = 1'-0"



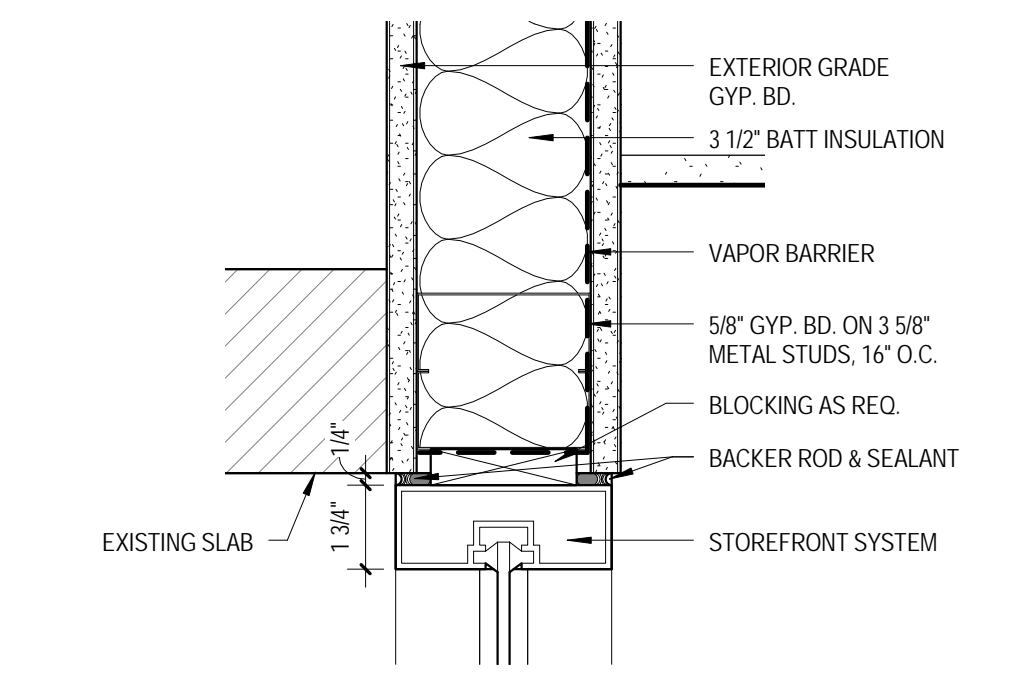
5 WALL SECTION @ DINING RM. SLIDING DR
1' = 1'-0"



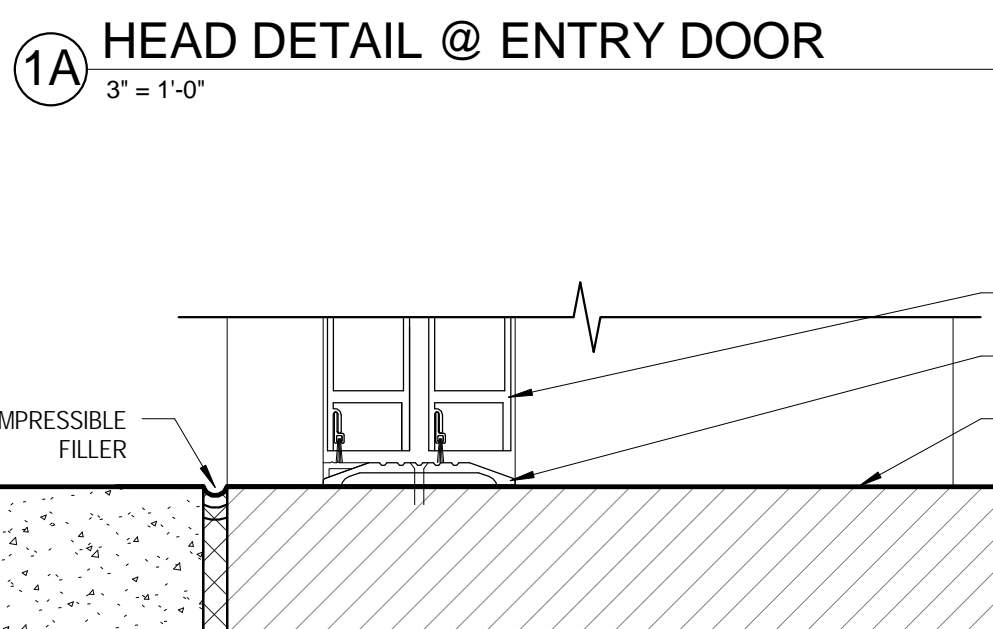
6 WELL SECTION @ NEW LOUVER
1' = 1'-0"



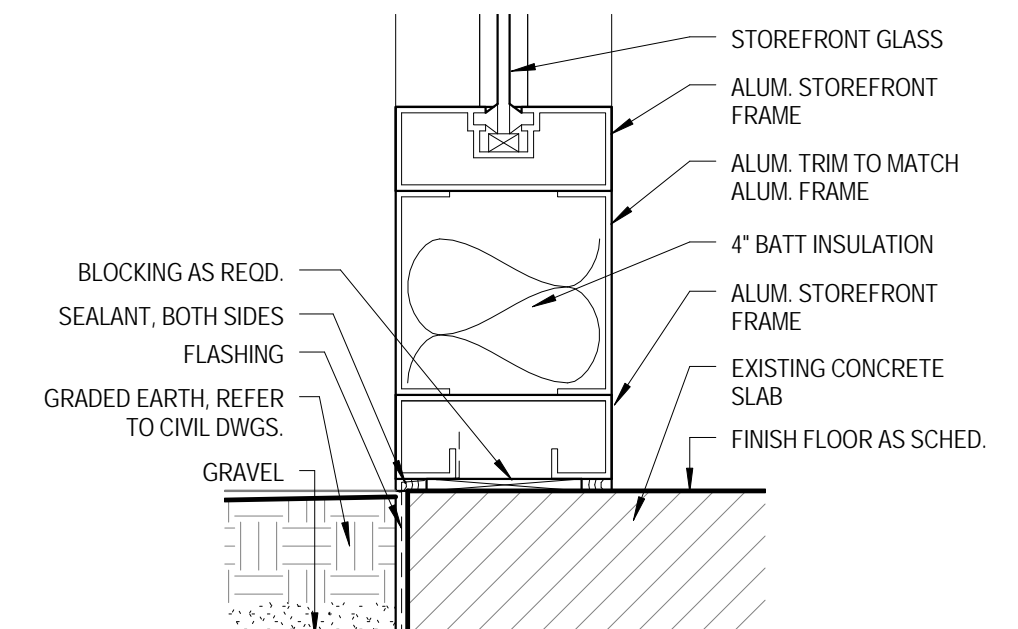
1A HEAD DETAIL @ ENTRY DOOR
3' = 1'-0"



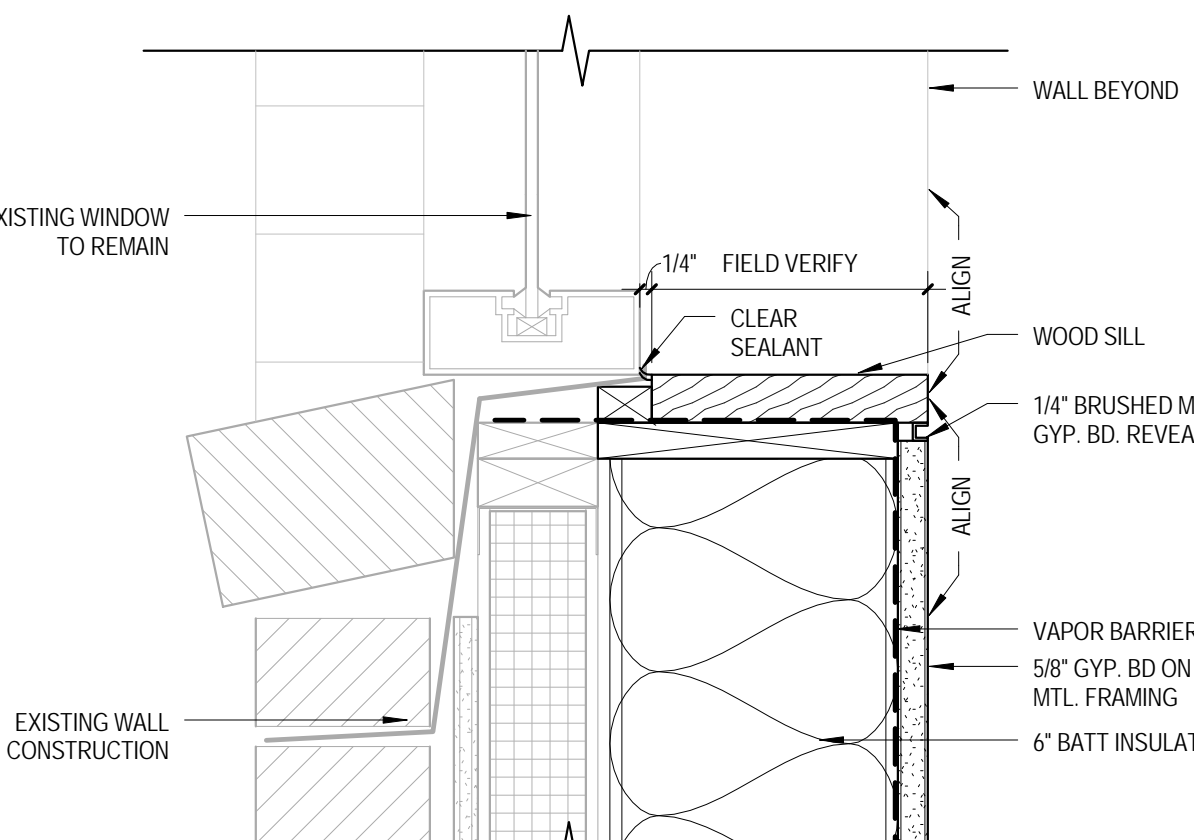
2A STOREFRONT HEAD DETAIL
3' = 1'-0"



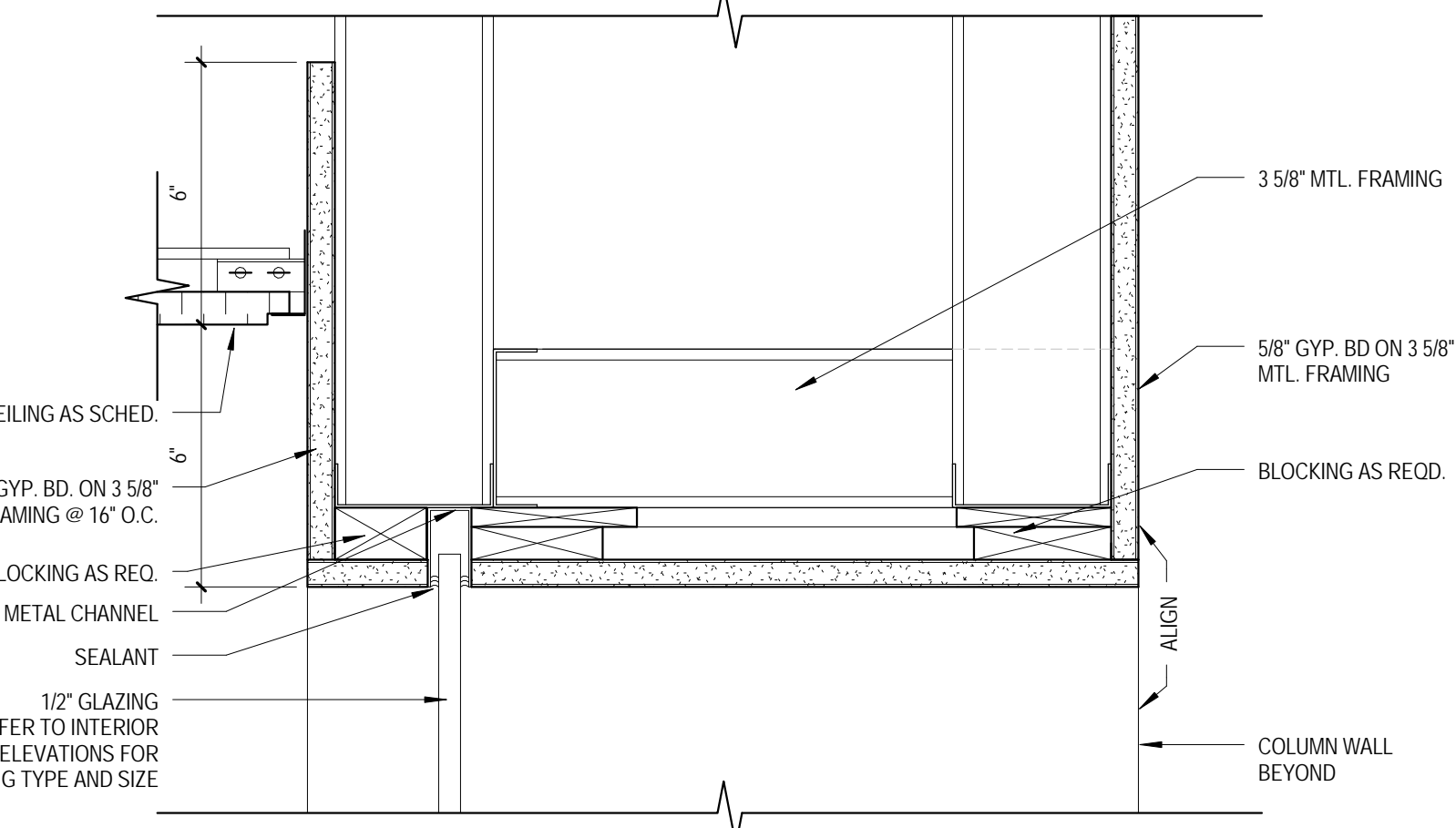
1B THRESHOLD DETAIL @ ENTRY DOOR
3' = 1'-0"



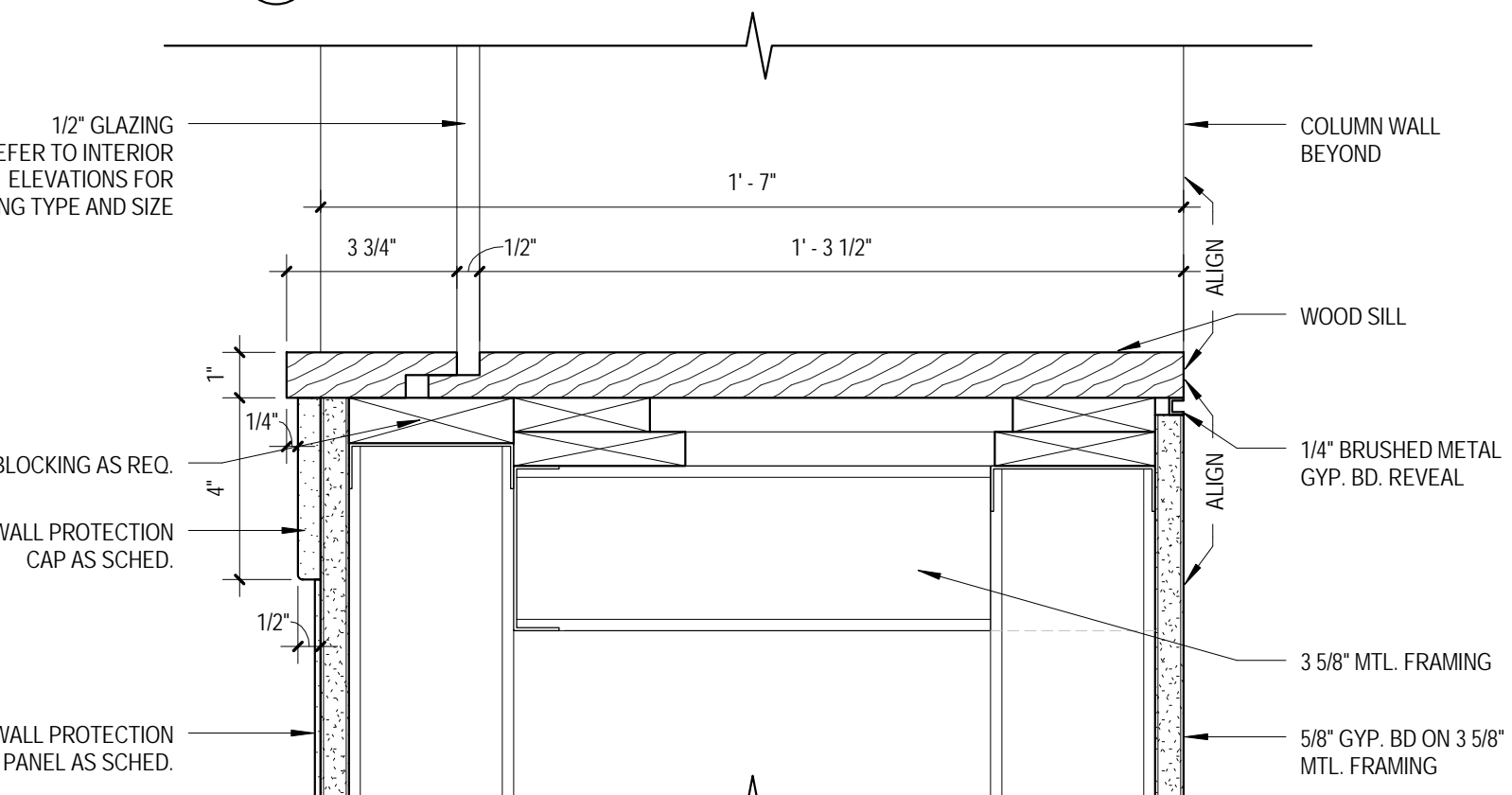
2B STOREFRONT SILL DETAIL
3' = 1'-0"



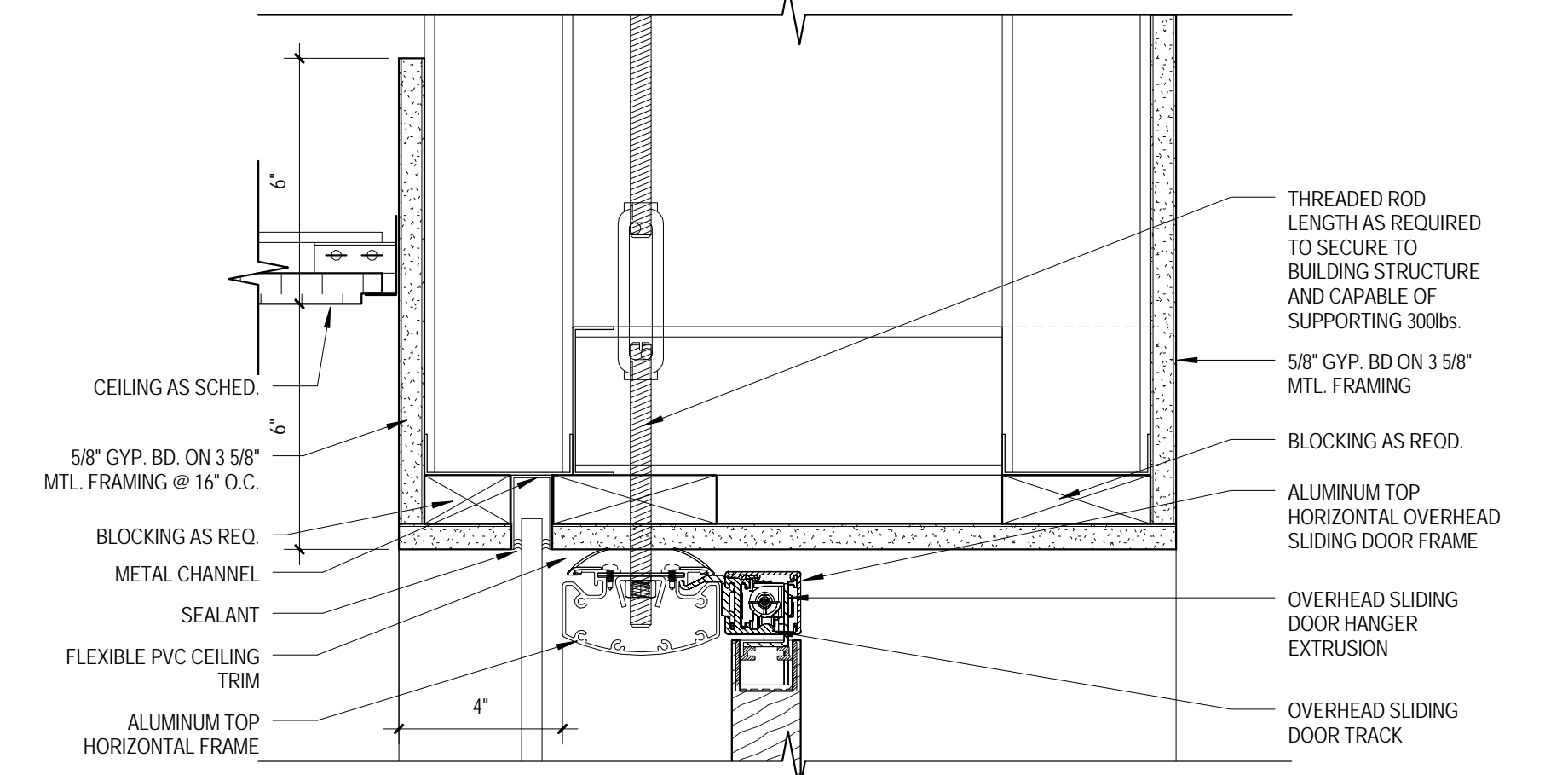
3B EXTERIOR WALL DTL. @ WINDOW SILL
3' = 1'-0"



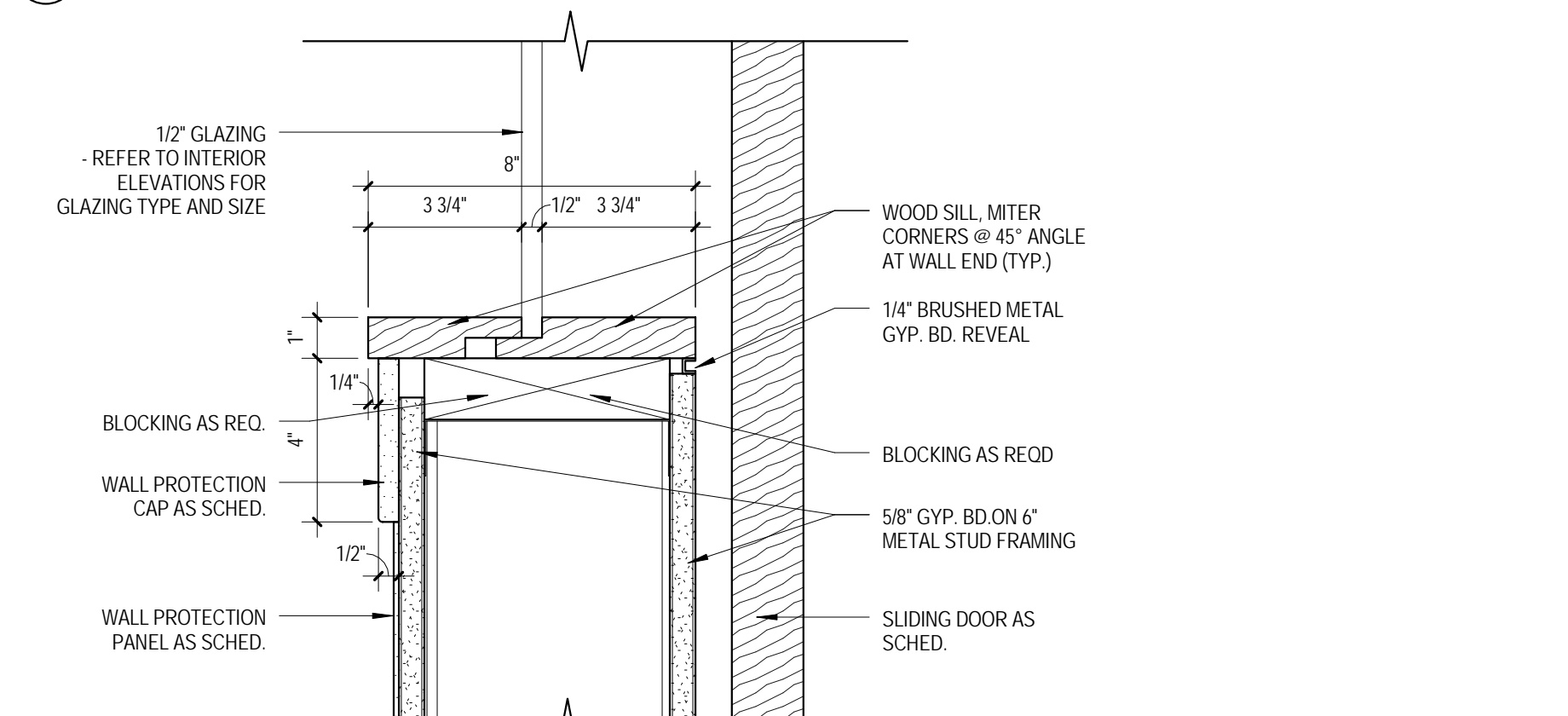
4A DINING RM. WALL DTL. @ GLAZING HEAD
3' = 1'-0"



4B DINING RM. WALL DTL. @ DEEP SILL
3' = 1'-0"



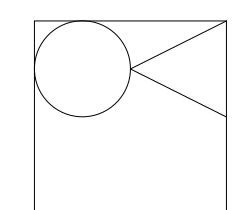
5A DINING RM. WALL DTL. @ SLIDING DR. HEAD
3' = 1'-0"



5B DINING RM. WALL DTL. @ GLAZING SILL
3' = 1'-0"

100% Construction Documents Submission	02/24/12
95% Construction Documents	02/10/12
60% Design Development	01/20/12
Schematic Design	11/30/11
Issuances:	Date

ARCHITECT / ENGINEERS:



Oudens Knoop Knoop + Sachs Architects
2 Wisconsin Circle / Suite 820
Chevy Chase, MD 20815-7003
Tel: (301) 718-0080
Fax: (301) 718-9520

HENRY ADAMS
Consulting Engineers

Mechanical Electrical & Plumbing Engineers

Henry Adams, LLC
Consulting Engineers
600 Baltimore Avenue
Baltimore, MD 21204
Tel: (410) 296-6500
Fax: (410) 296-3156

Woods Peacock Engineering Consultants
A Pennoni Company
Halifax Office Park
5250 Cherokee Avenue, Suite 420
Alexandria, VA 22312-2052
Tel: (703) 658-4400
Fax: (703) 658-4404

Patton Harris Rust & Associates
A Pennoni Company
117 East Piccadilly Street, Suite 308
Winchester, VA 22601-5002
Tel: (540) 667-2139
Fax: (540) 665-0493

Stamp/Seal

Drawing Title
WALL SECTIONS AND DETAILS

Approved: Project Director

Project Title
**BUILDING 502 E WING
RENOVATION**

Location
MARTINSBURG, WV

Date
01/20/12

Checked
Checker

Drawn
Author

VA Project Number
613-12-101

Building Number
502

Drawing Number
A300

Office of
Construction
and Facilities
Management

