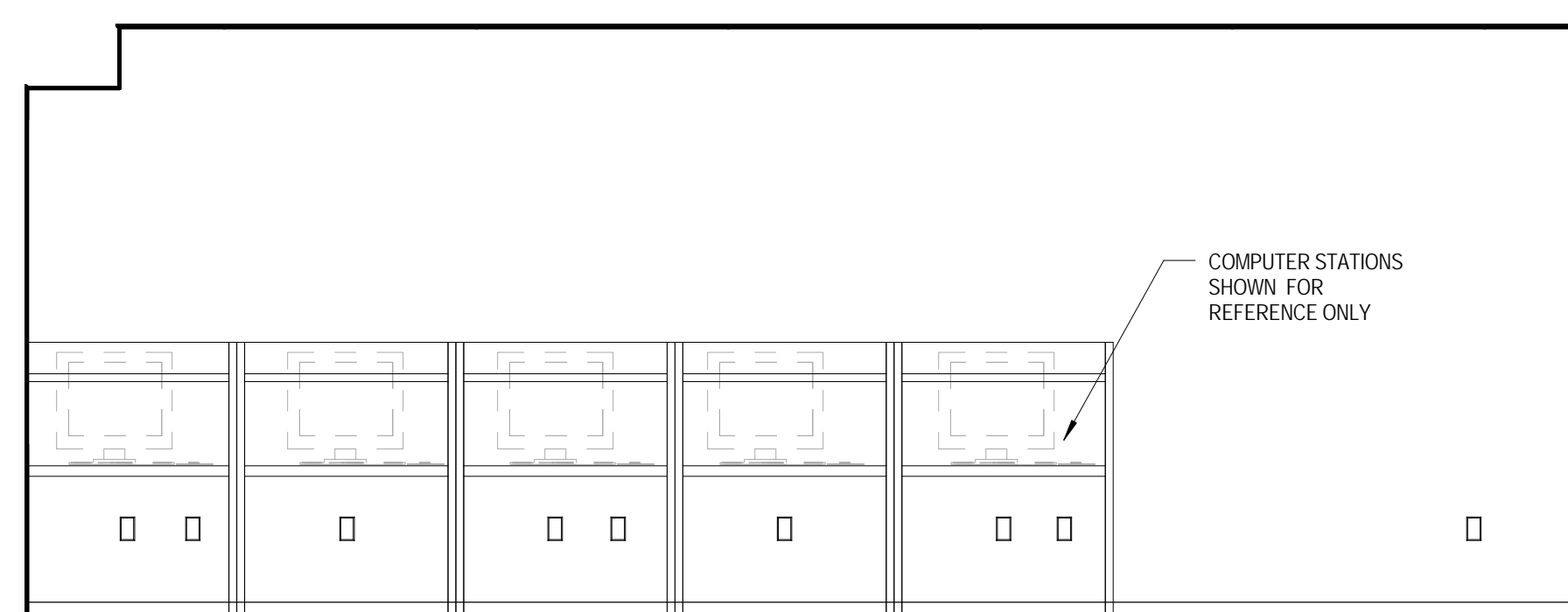
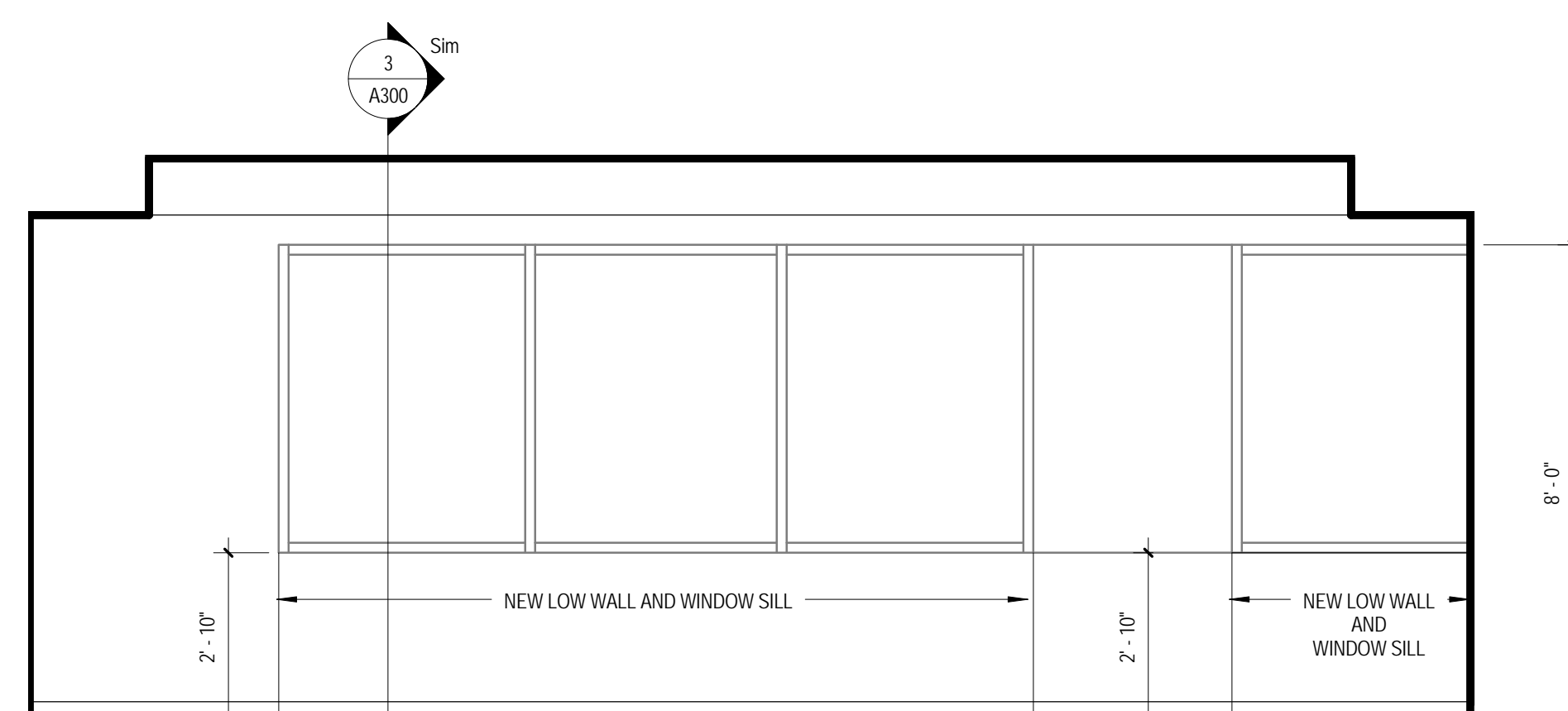


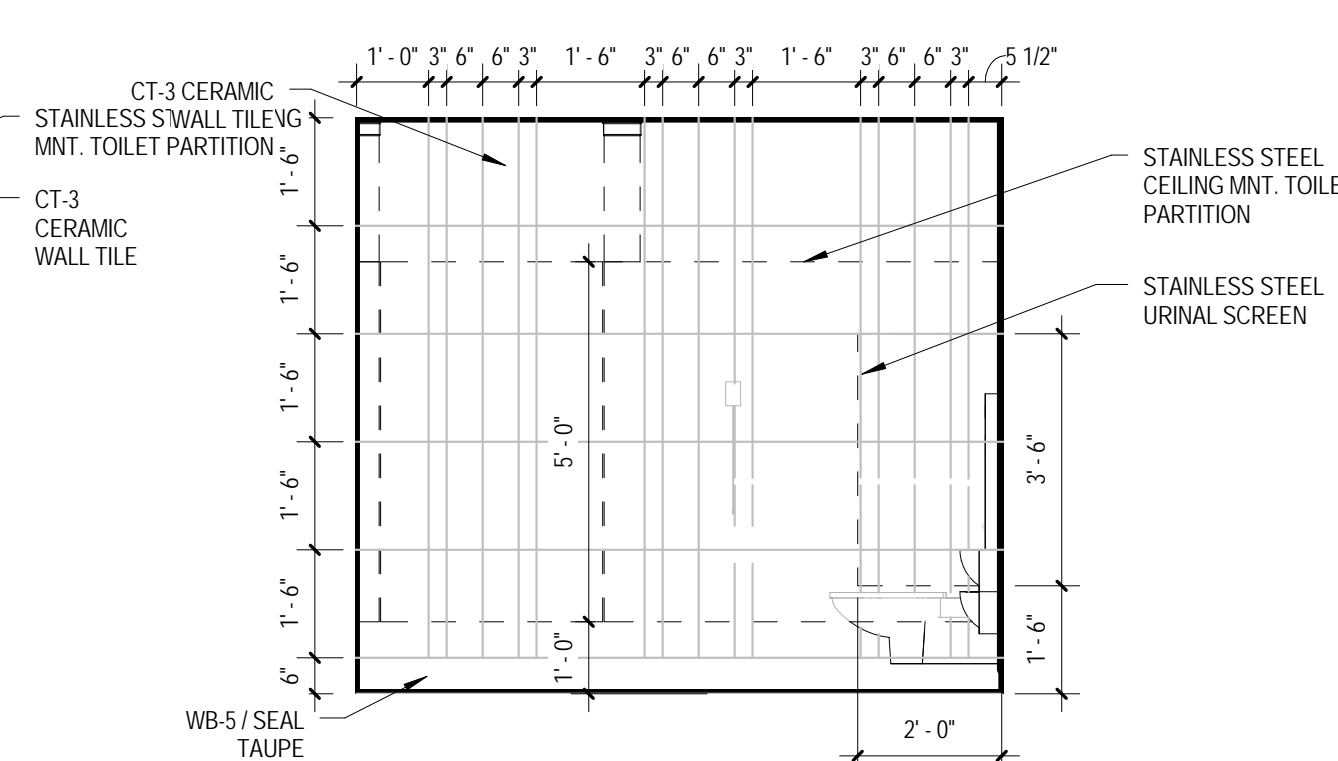
4 E-104 FAMILY REC. RM. - WEST WALL  
3/8" = 1'-0"








7 E-105 RESOURCE RM. - WEST WALL  
3/8" = 1'-0"



10 E-106B LARGE CONF. ROOM - SOUTH WALL  
3/8" = 1'-0"



14 E-114 MEN'S - WEST WALL  
3/8" = 1'-0"

ARCHITECT / ENGINEERS:				
	<b>Odens Knoop Knoop + Sachs Architects</b>			
	2 Wisconsin Circle / Suite 820 Chevy Chase, MD 20815-7003 Tel: (301) 718-0080 Fax: (301) 718-9520			
	<b>HENRY ADAMS</b>			
	Consulting Engineers  Mechanical Electrical & Plumbing Engineers			
	<b>Henry Adams, LLC</b>			
	Consulting Engineers 503 Baltimore Avenue Baltimore, MD 21204 Tel: (410)296-6500 Fax: (410)296-3156			
	<b>Woods Peacock Engineering Consultants</b>			
	Halifax Office Park 5250 Cherokee Avenue, Suite 420 Alexandria, VA 22312-2052 Tel: (703) 658-4400 Fax: (703) 658-4404			
	<b>Patton Harris Rust &amp; Associates</b>			
	<b>A Pennoni Company</b> 117 E. Picaadilly Street, Suite 308 Winchester, VA 22601-5002 Tel: (703) 667-2139 Fax: (540) 665-0493			



Department of  
Veterans Affairs