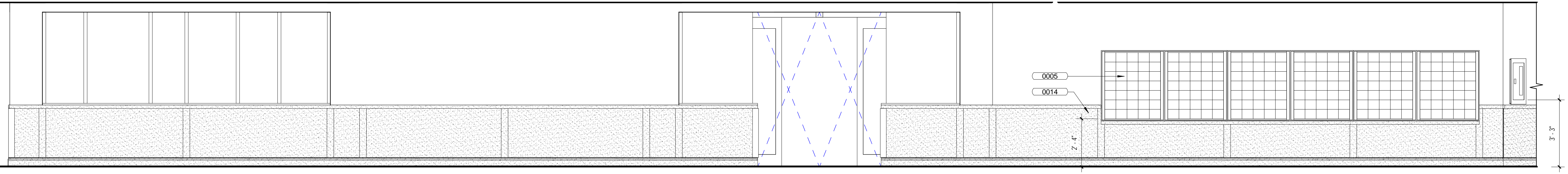


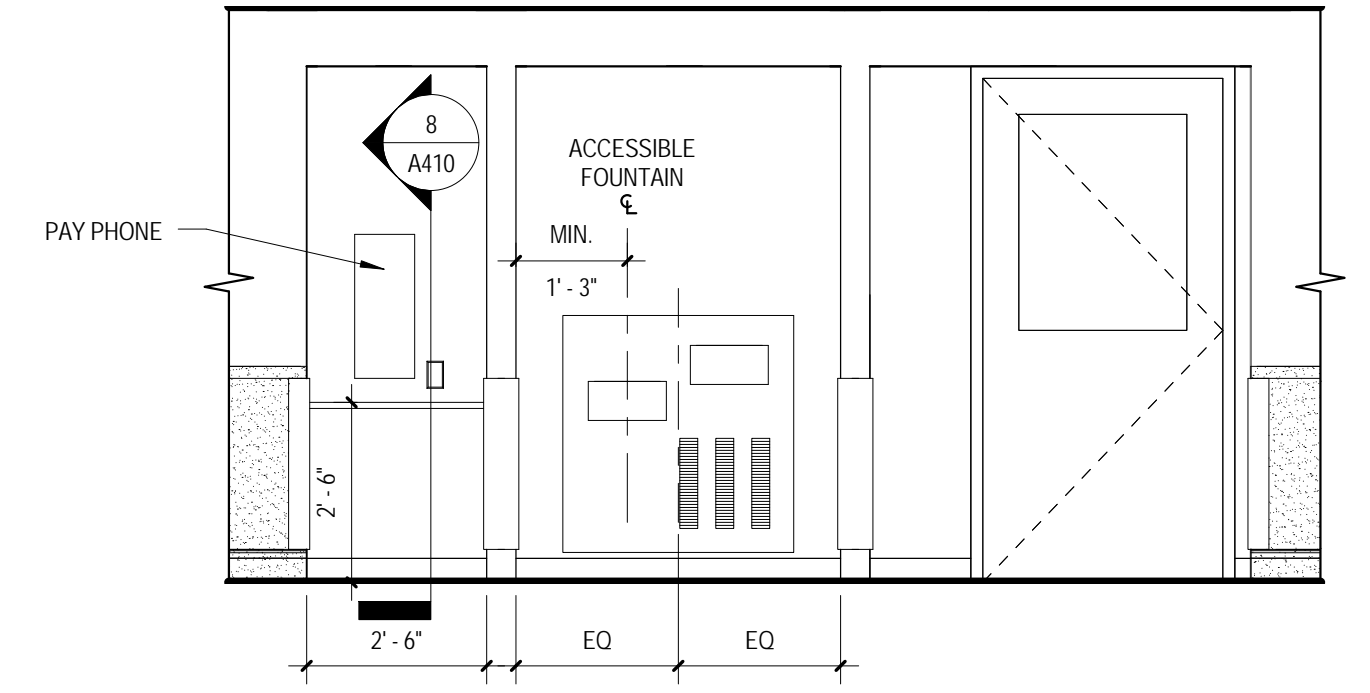
1
2
3
4
5
6
7
8
9

A
B
C
D
E
F

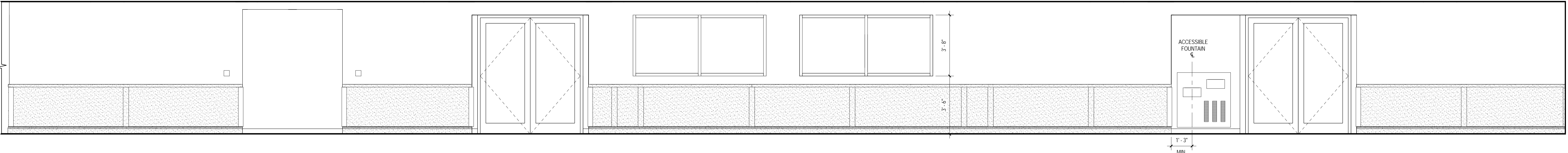
3" = 1'-0"
1' = 1'-0"
1 1/2" = 1'-0"
1" = 1'-0"
3/4" = 1'-0"
1/2" = 1'-0"
3/8" = 1'-0"
1/4" = 1'-0"
1/8" = 1'-0"



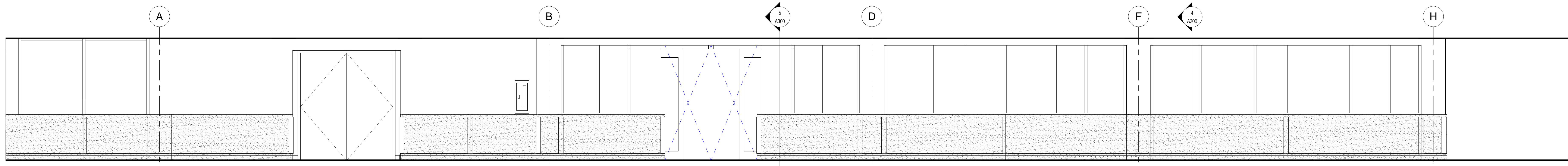
① CE-1 CORRIDOR - NORTH WALL
3/8" = 1'-0"



④ CE-1 CORRIDOR - SOUTH WALL
3/8" = 1'-0"



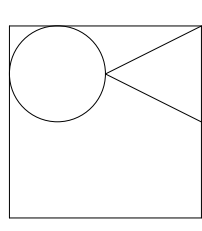
② CE-3 CORRIDOR - WEST WALL
3/8" = 1'-0"



③ CE-3 CORRIDOR - EAST WALL
3/8" = 1'-0"

100% Construction Documents Submission	02/24/12
95% Construction Documents	02/10/12
60% Design Development	01/20/12
Schematic Design	11/30/11
Issuances:	Date

ARCHITECT / ENGINEERS:

 **Oudens Knoop Knoop + Sachs Architects**
2 Wisconsin Circle / Suite 820
Chevy Chase, MD 20815-7003
Tel: (301) 718-0080
Fax: (301) 718-9520

HENRY ADAMS
Consulting Engineers
Mechanical Electrical & Plumbing Engineers

Henry Adams, LLC
Consulting Engineers
600 Baltimore Avenue
Baltimore, MD 21204
Tel: (410)296-6500
Fax: (410)296-3156

Woods Peacock Engineering Consultants
Halifax Office Park
5250 Cherokee Avenue, Suite 420
Alexandria, VA 22312-2052
Tel: (703) 658-4400
Fax: (703) 658-4404

Patton Harris Rust & Associates
A Pennoni Company
117 East Piccadilly Street, Suite 308
Winchester, VA 22601-5002
Tel: (540) 667-2139
Fax: (540) 665-0493

Stamp/Seal

Drawing Title
INTERIOR ELEVATIONS

Approved: Project Director

Project Title
**BUILDING 502 E WING
RENOVATION**

Location
MARTINSBURG, WV

Date
01/20/12

Checked
Checker

Drawn
Author

VA Project Number
613-12-101

Building Number
502

Drawing Number
A404

Office of
Construction
and Facilities
Management

 Department of
Veterans Affairs