

A

B

C

D

E

F

A

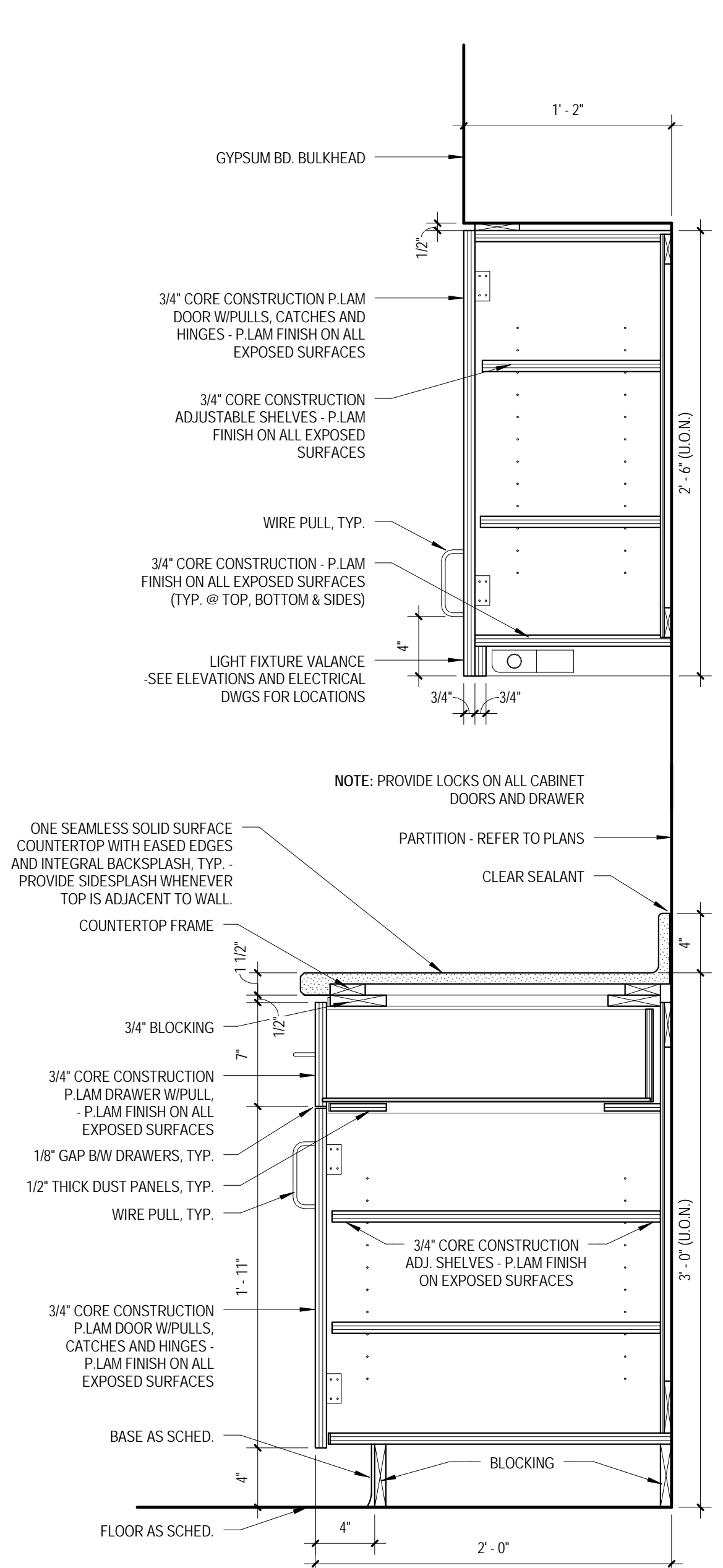
B

C

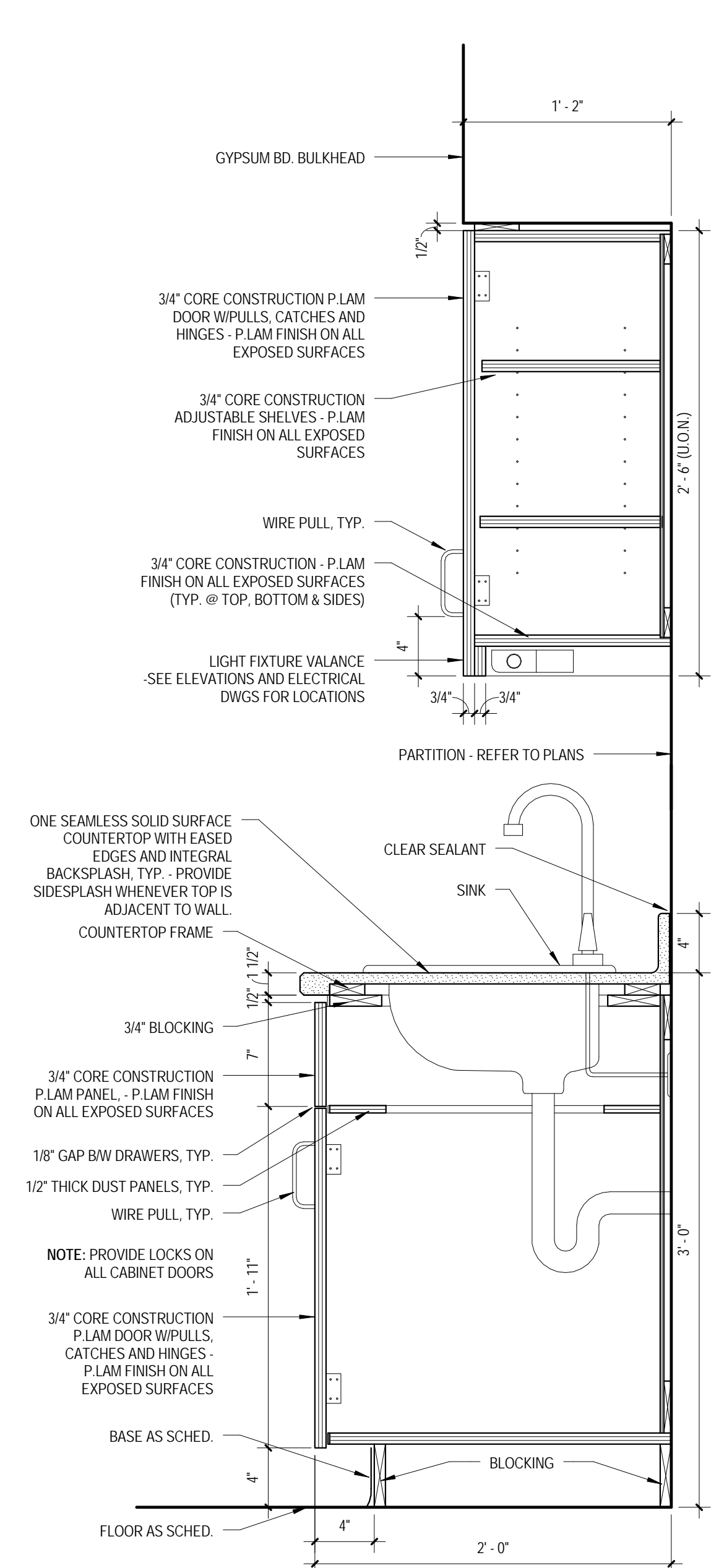
D

E

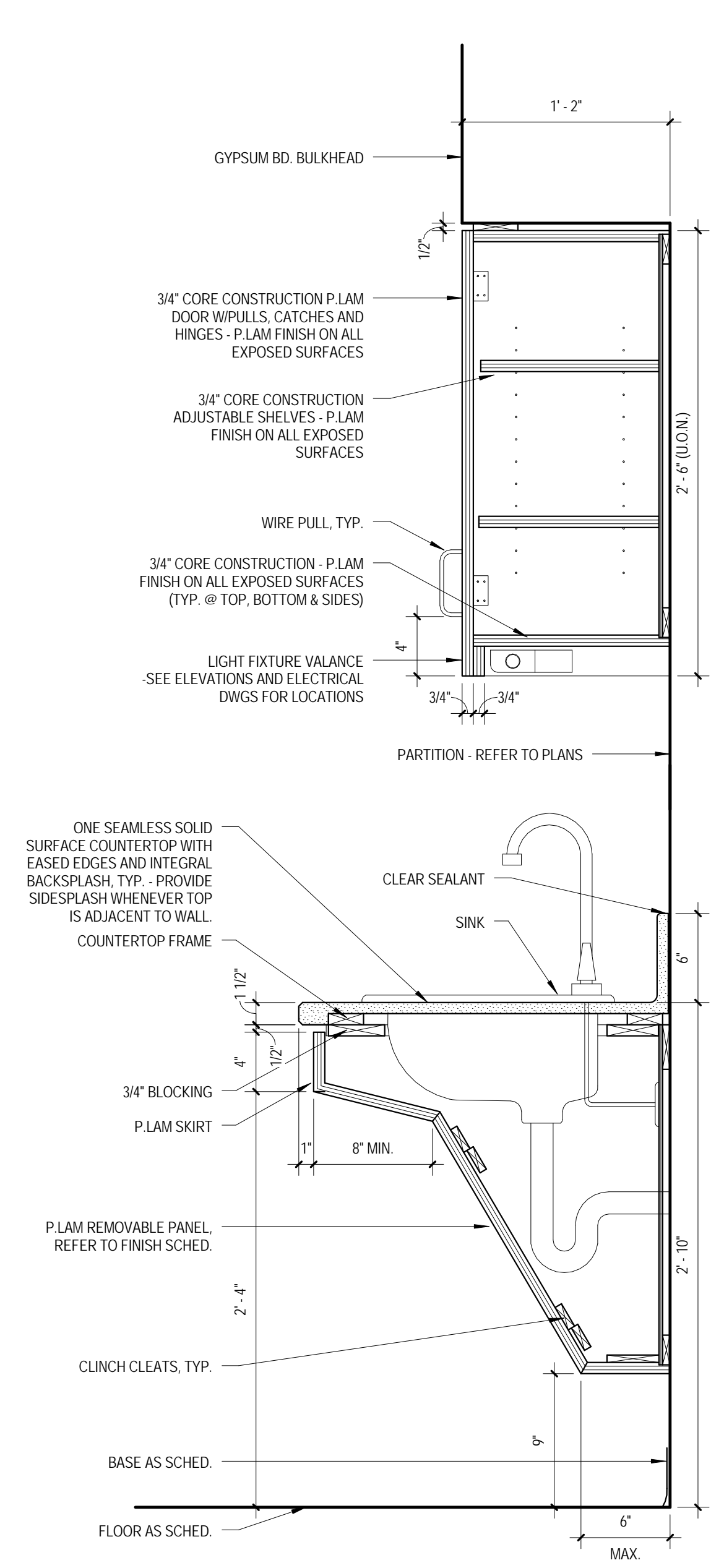
F



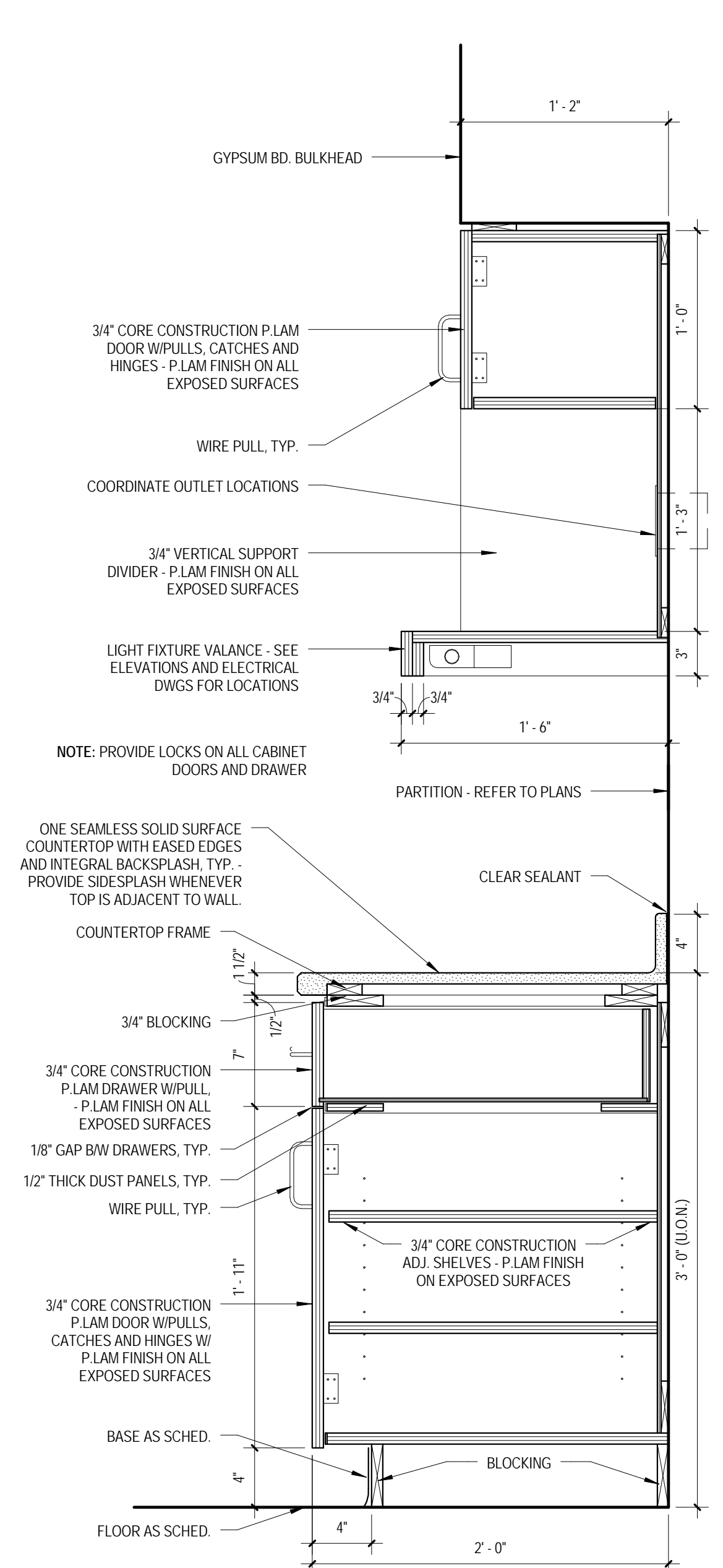
1 BASE CABINET SECTION (Typical)
1 1/2" = 1'-0"



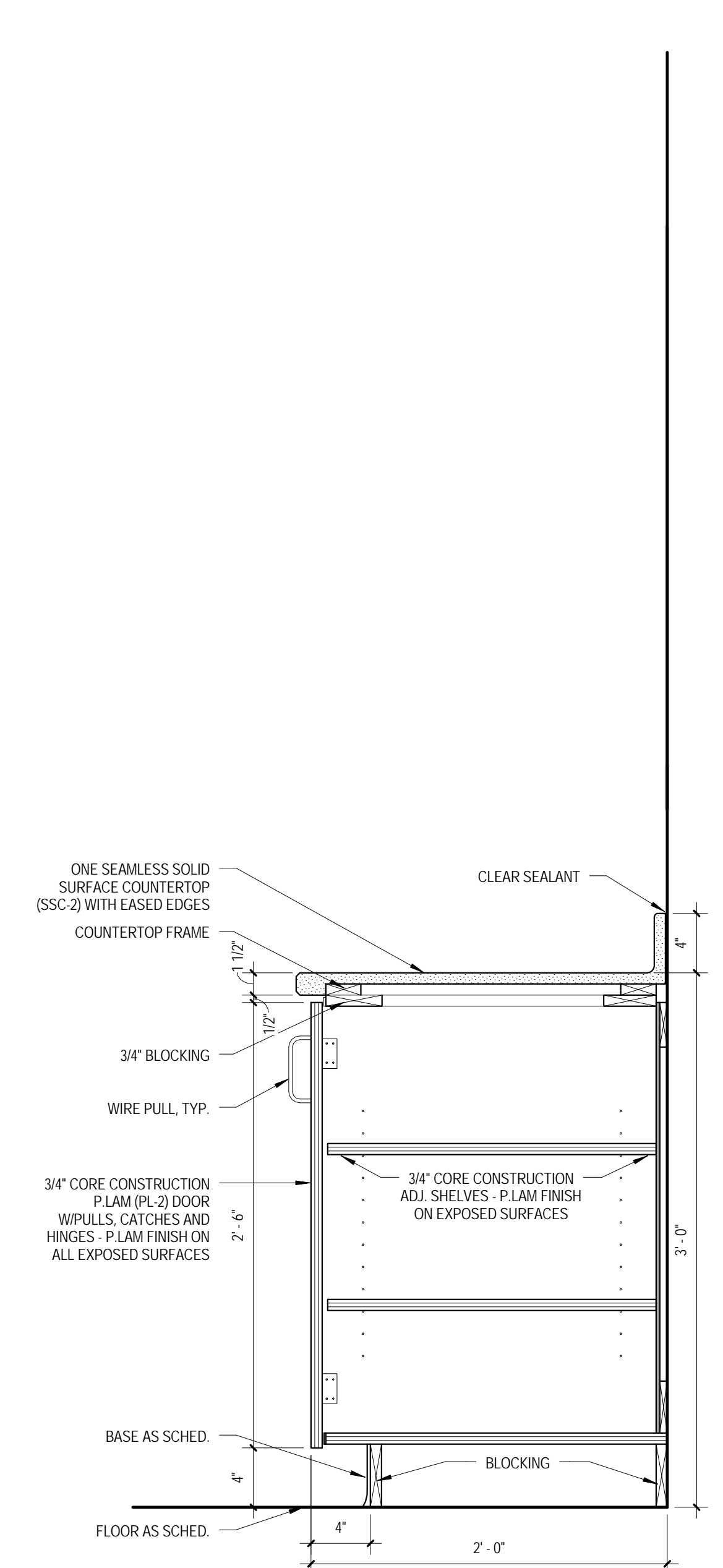
2 SINK CABINET SECTION (Typical)
1 1/2" = 1'-0"



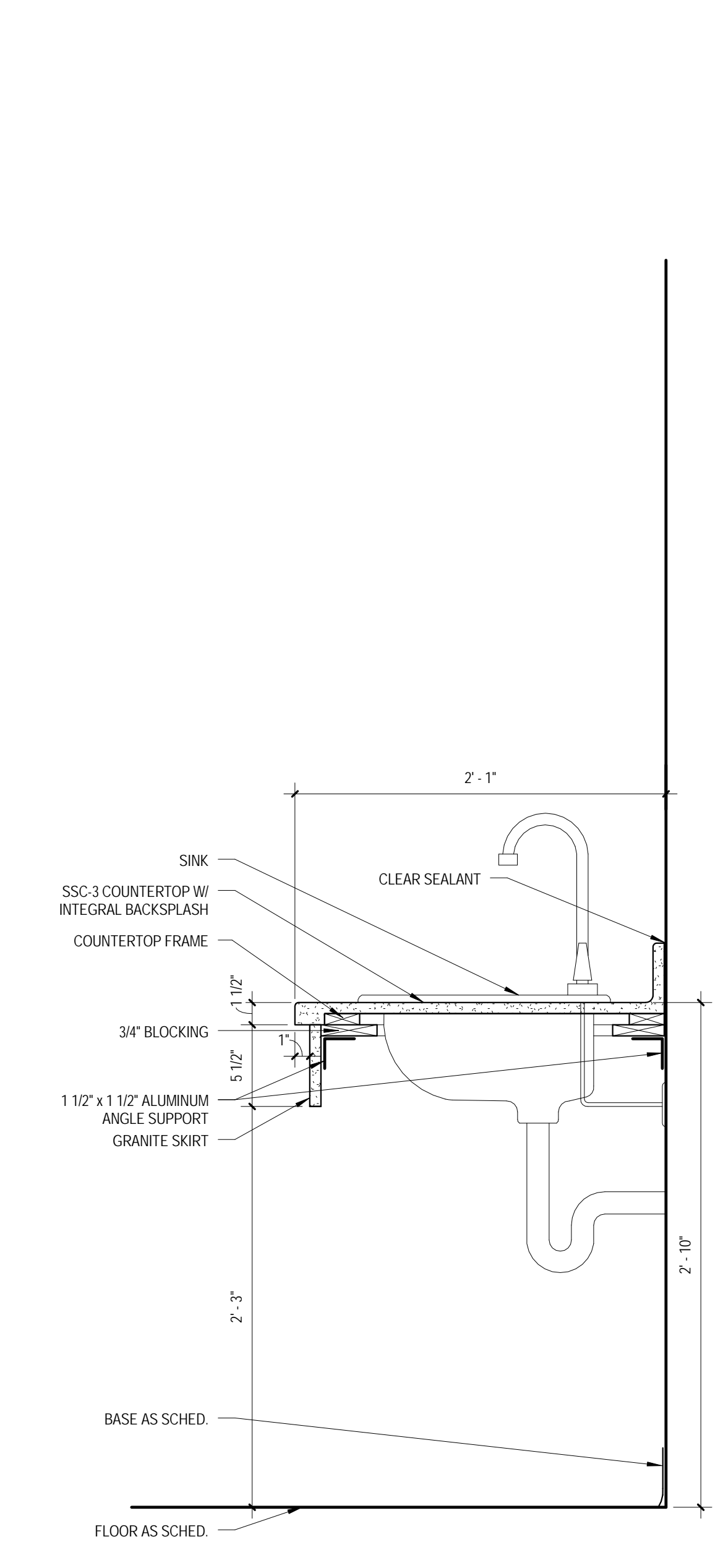
3 SINK CABINET SECTION (W.C. Accessible)
1 1/2" = 1'-0"



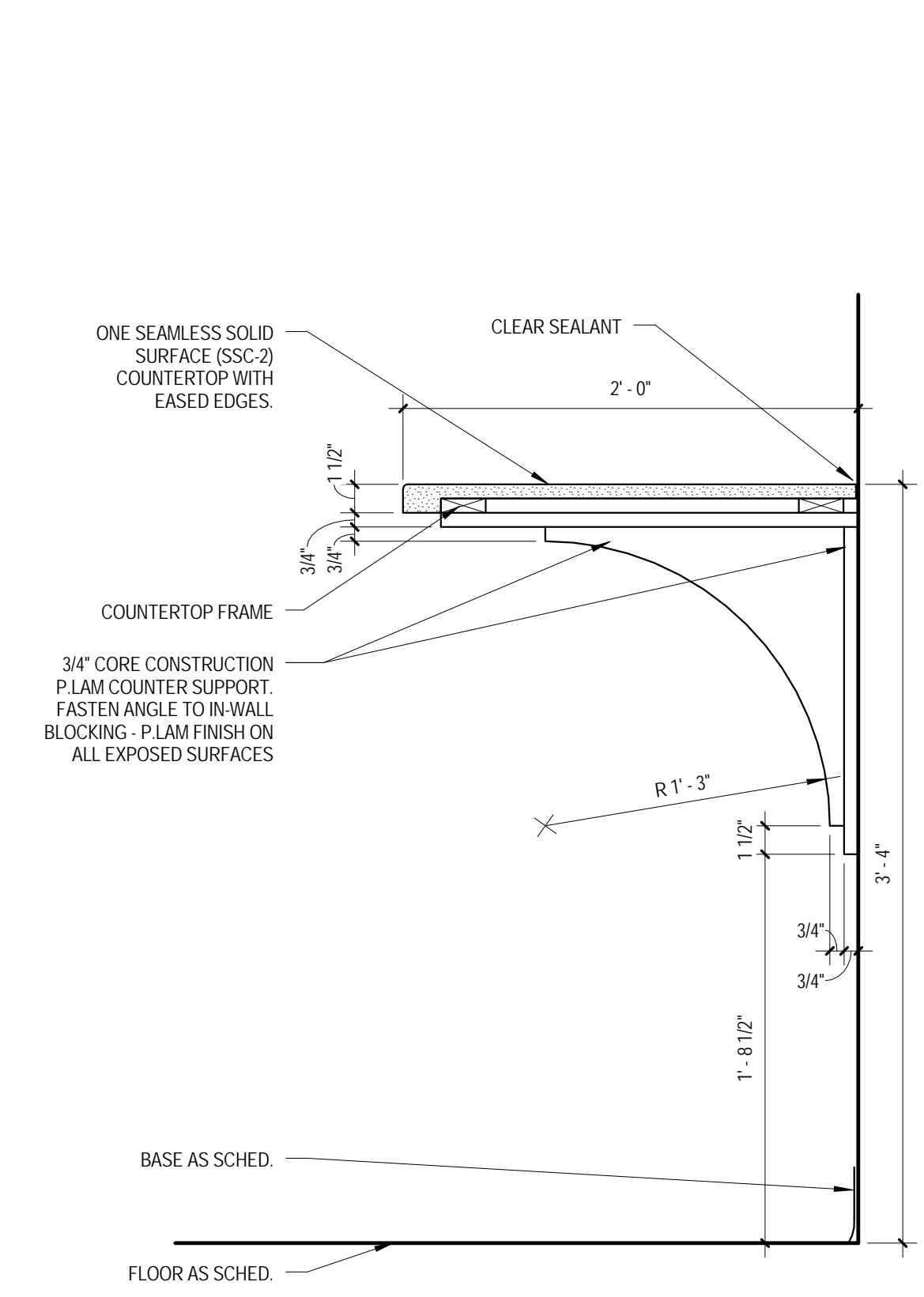
4 WALL CABINET SECTION (w/ Microwave Shelf)
1 1/2" = 1'-0"



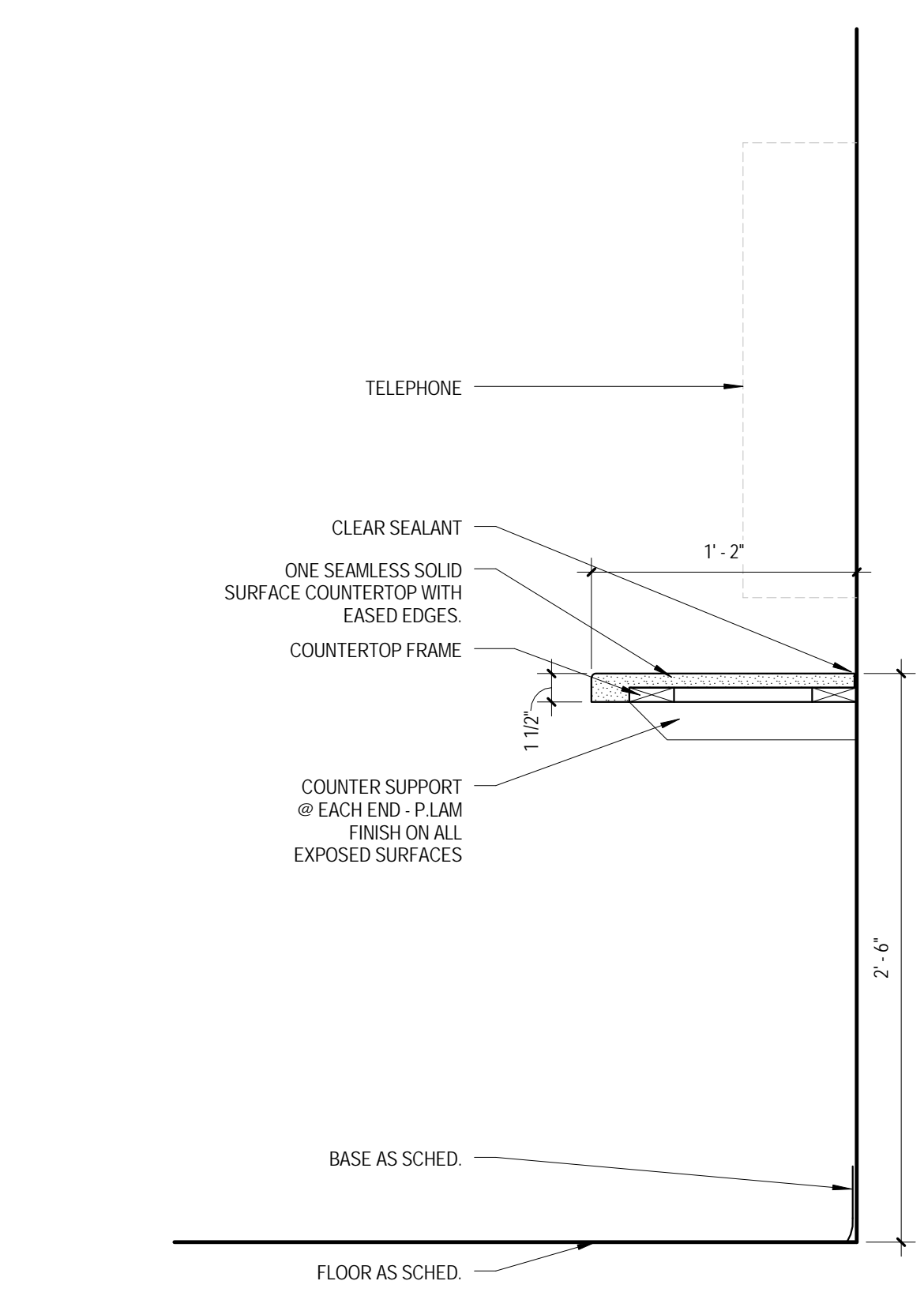
5 BASE CABINET SECTION (@ Conference Rm.)
1 1/2" = 1'-0"



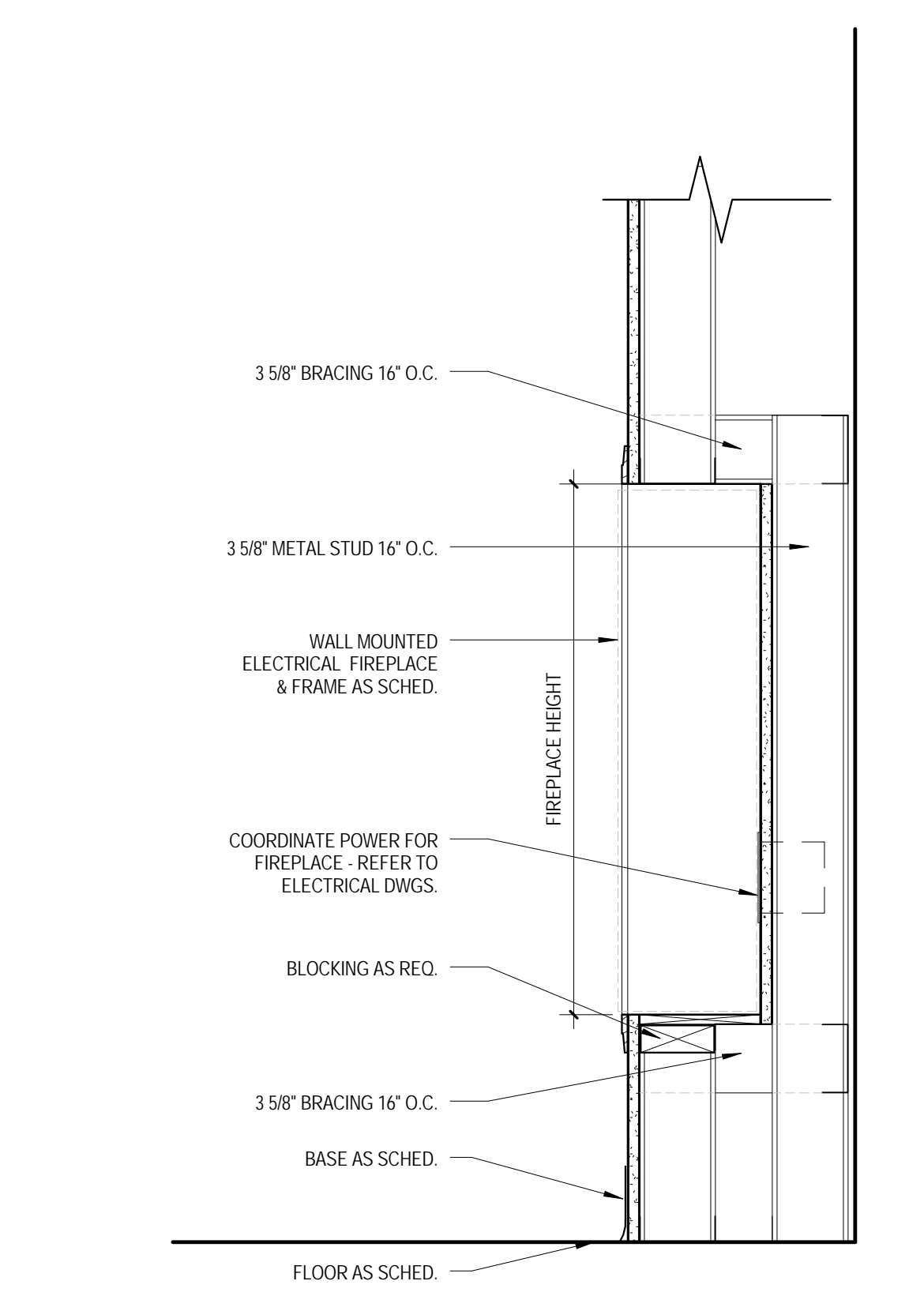
6 SINK CABINET SECTION (@ Restrooms)
1 1/2" = 1'-0"



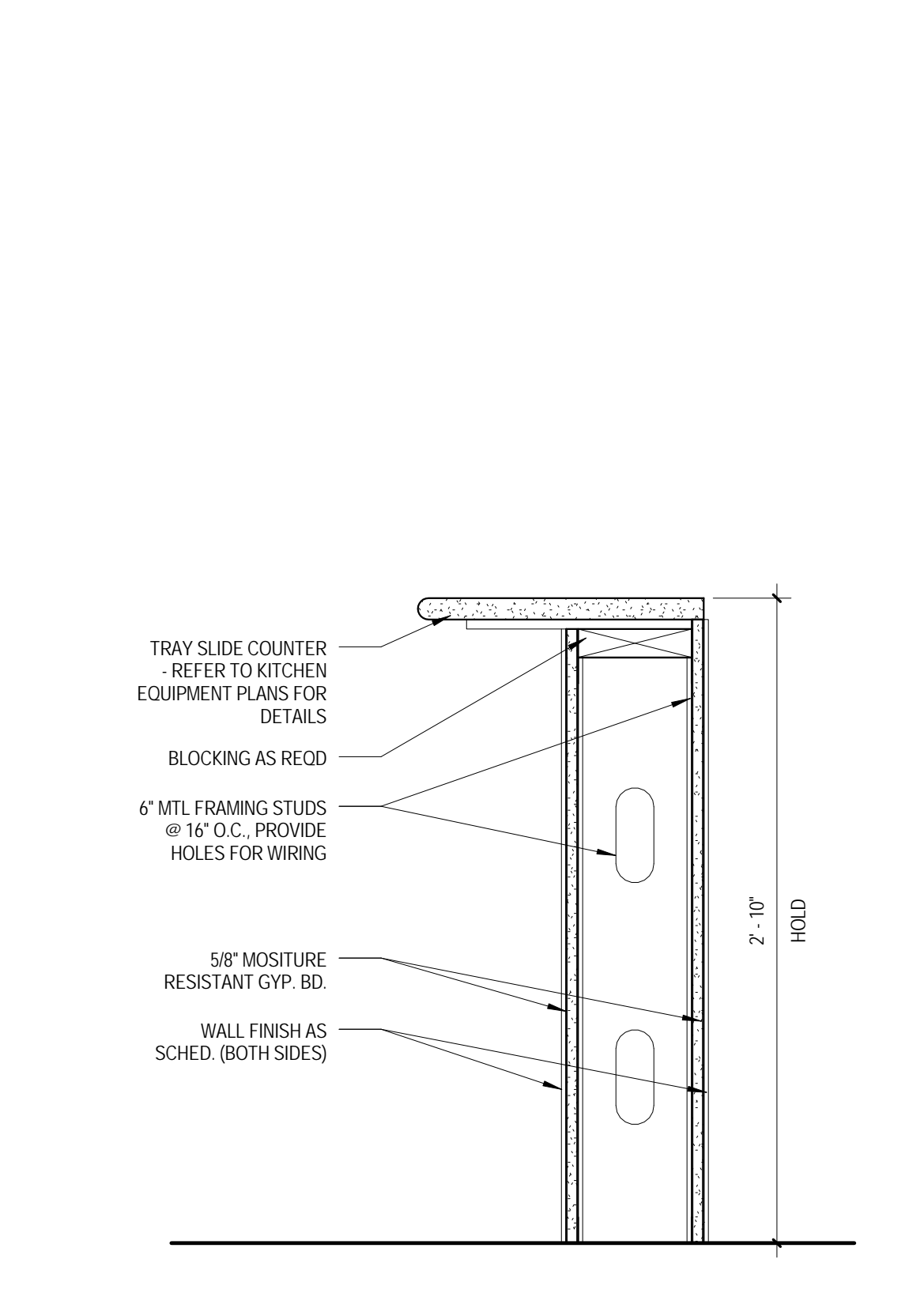
7 COUNTERTOP @ REC. ROOM
1 1/2" = 1'-0"



8 COUNTERTOP @ TELEPHONE
1 1/2" = 1'-0"



9 SECTION @ FIREPLACE
1 1/2" = 1'-0"



10 WALL SECTION @ CAFETERIA SERVICE
1 1/2" = 1'-0"

ARCHITECT / ENGINEERS:		Stamp/Seal		Drawing Title MILLWORK DETAILS		Project Title BUILDING 502 E WING RENOVATION		VA Project Number 613-12-101		Office of Construction and Facilities Management 			
Oudens Knoop Knoop + Sachs Architects 2 Wisconsin Circle / Suite 820 Chevy Chase, MD 20815-7003 Tel: (301) 718-0080 Fax: (301) 718-9520		HENRY ADAMS Consulting Engineers Mechanical Electrical & Plumbing Engineers		Henry Adams, LLC Consulting Engineers 600 Baltimore Avenue Baltimore, MD 21204 Tel: (410)296-6500 Fax: (410)296-3156		Woods Peacock Engineering Consultants Halifax Office Park 5250 Cherokee Avenue, Suite 420 Alexandria, VA 22312-2052 Tel: (703) 658-4400 Fax: (703) 658-4404		Patton Harris Rust & Associates A Pennoni Company 117 East Piccadilly Street, Suite 308 Winchester, VA 22601-5002 Tel: (540) 667-2139 Fax: (540) 665-0493				Building Number 502	
100% Construction Documents Submission 02/24/12 95% Construction Documents 02/10/12 60% Design Development 01/20/12 Schematic Design 11/30/11 Issuances: Date						Approved: Project Director		Location MARTINSBURG, WV				Drawing Number A410	
								Date 01/20/12		Checked TOS, ROS		Drawn ROS	