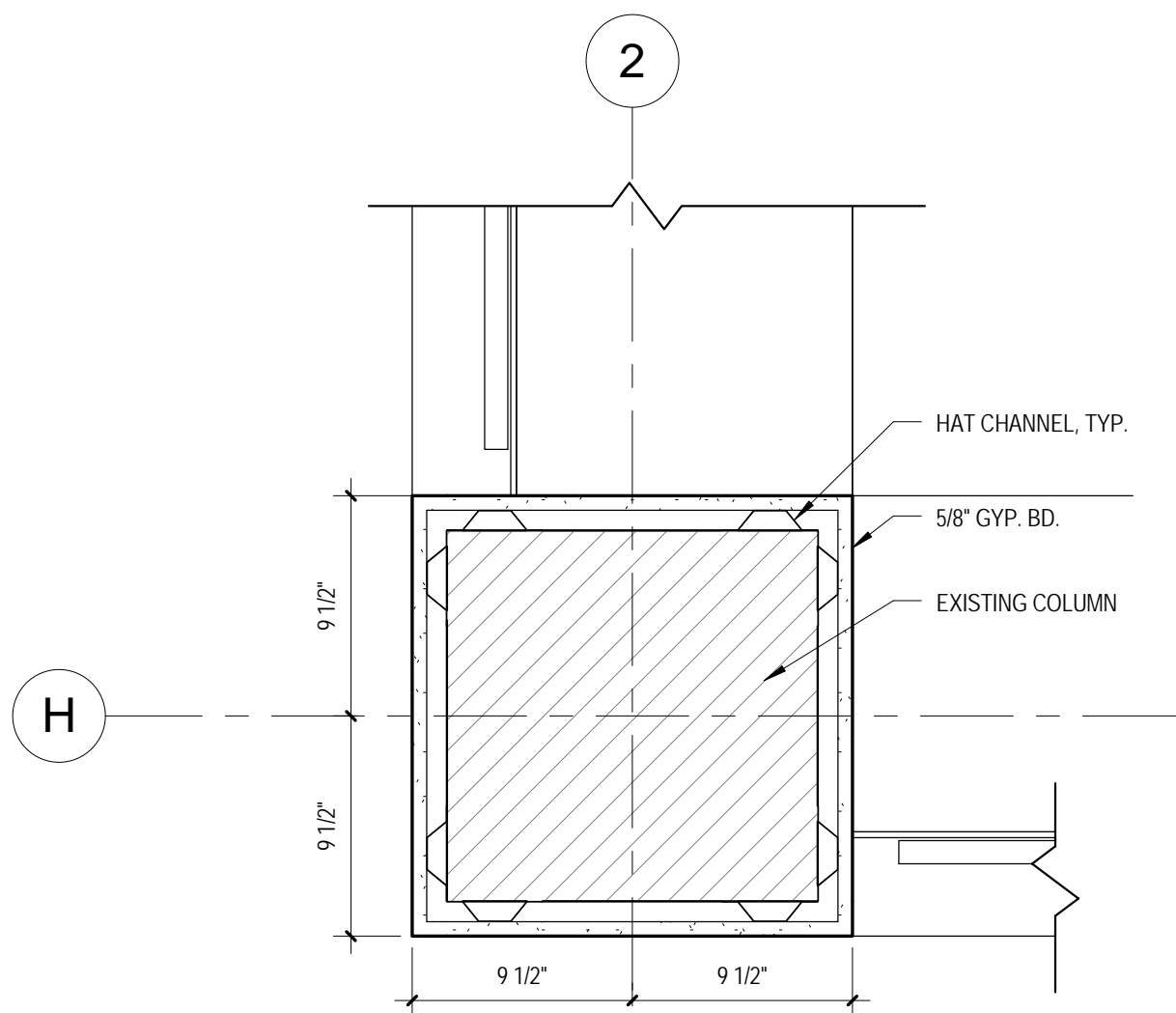
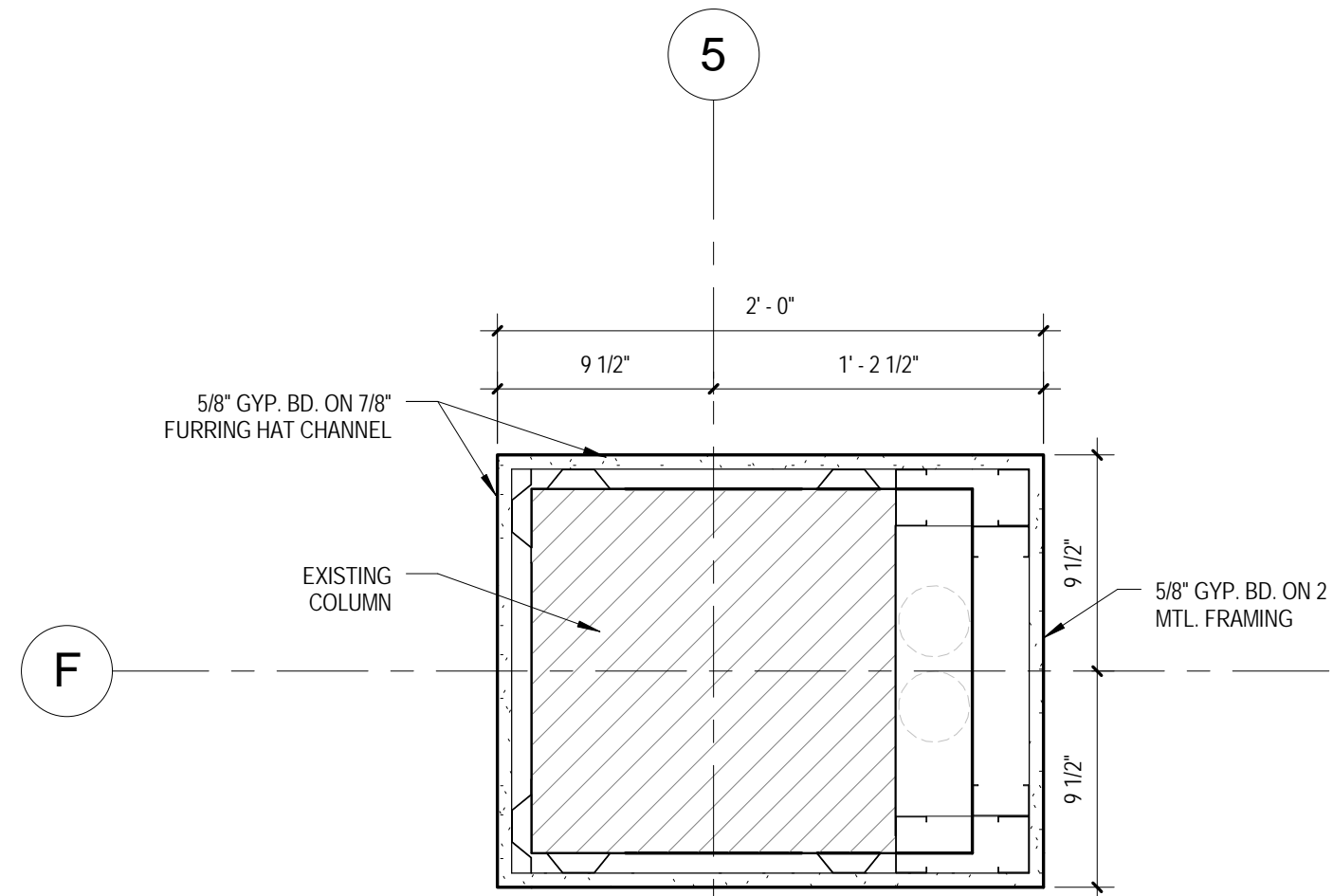


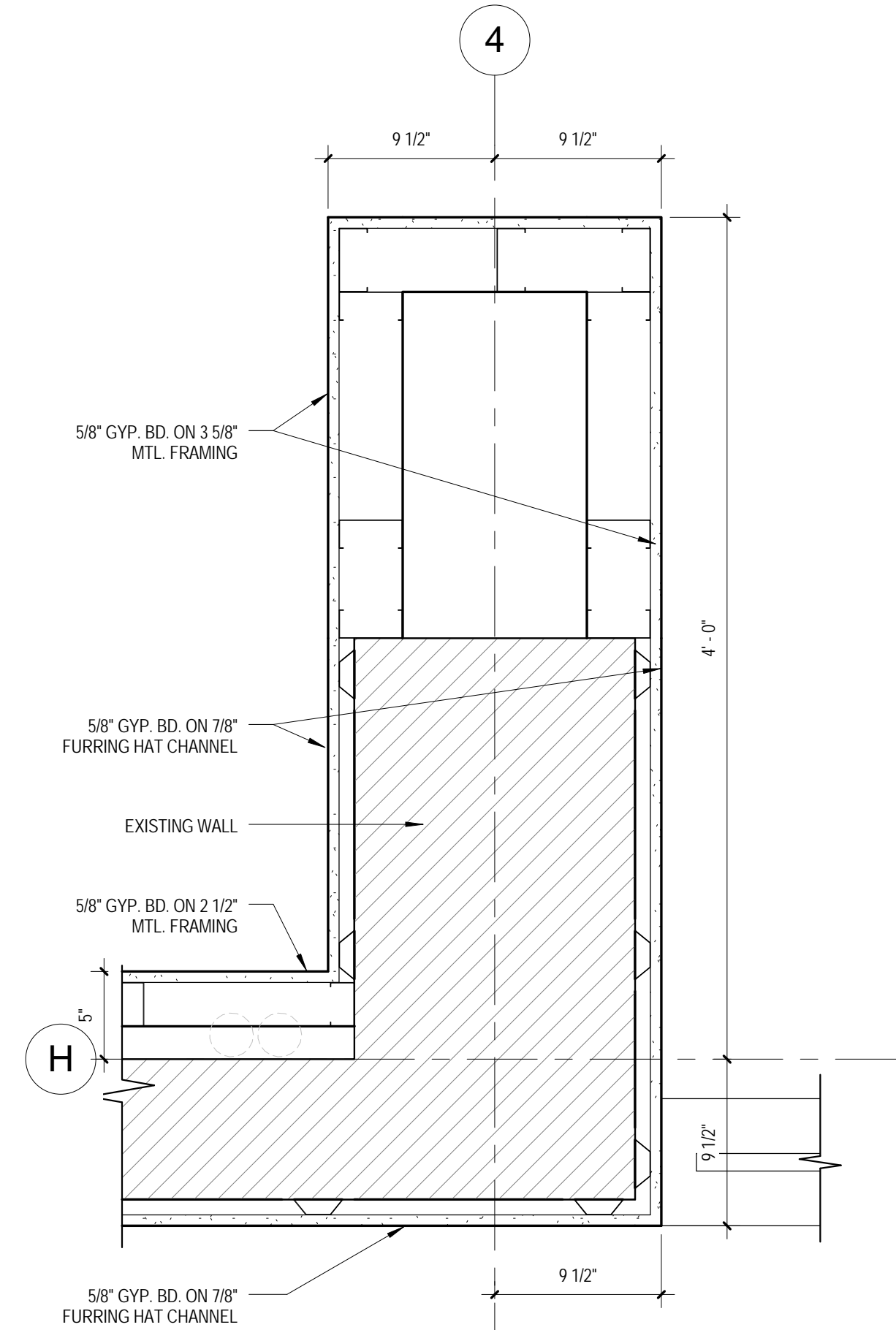
1 WINDOW CONNECTION - TYPICAL  
1 1/2" = 1'-0"



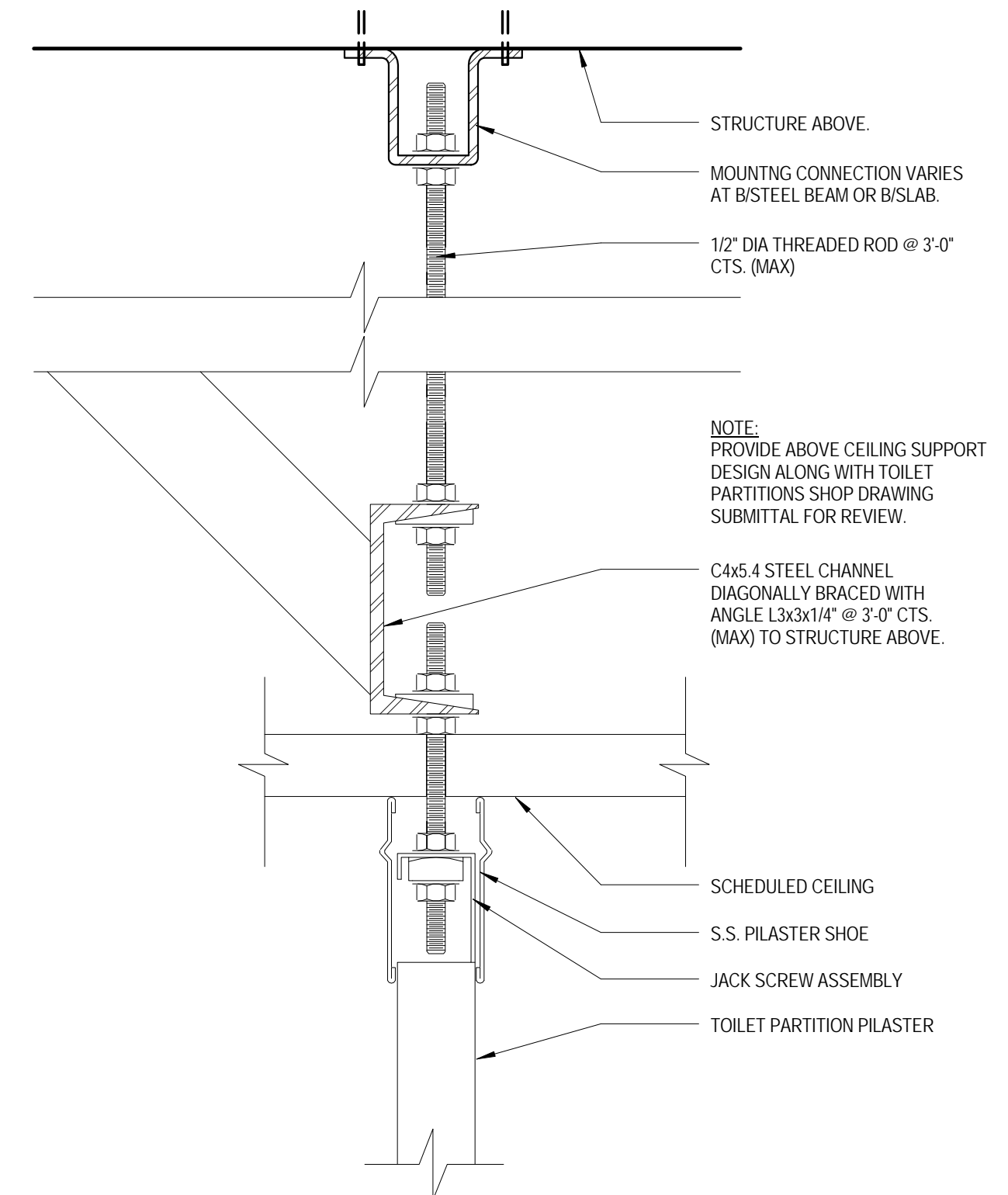
2 COLUMN FURRING DETAIL @ PERIMETER WALL  
1 1/2" = 1'-0"



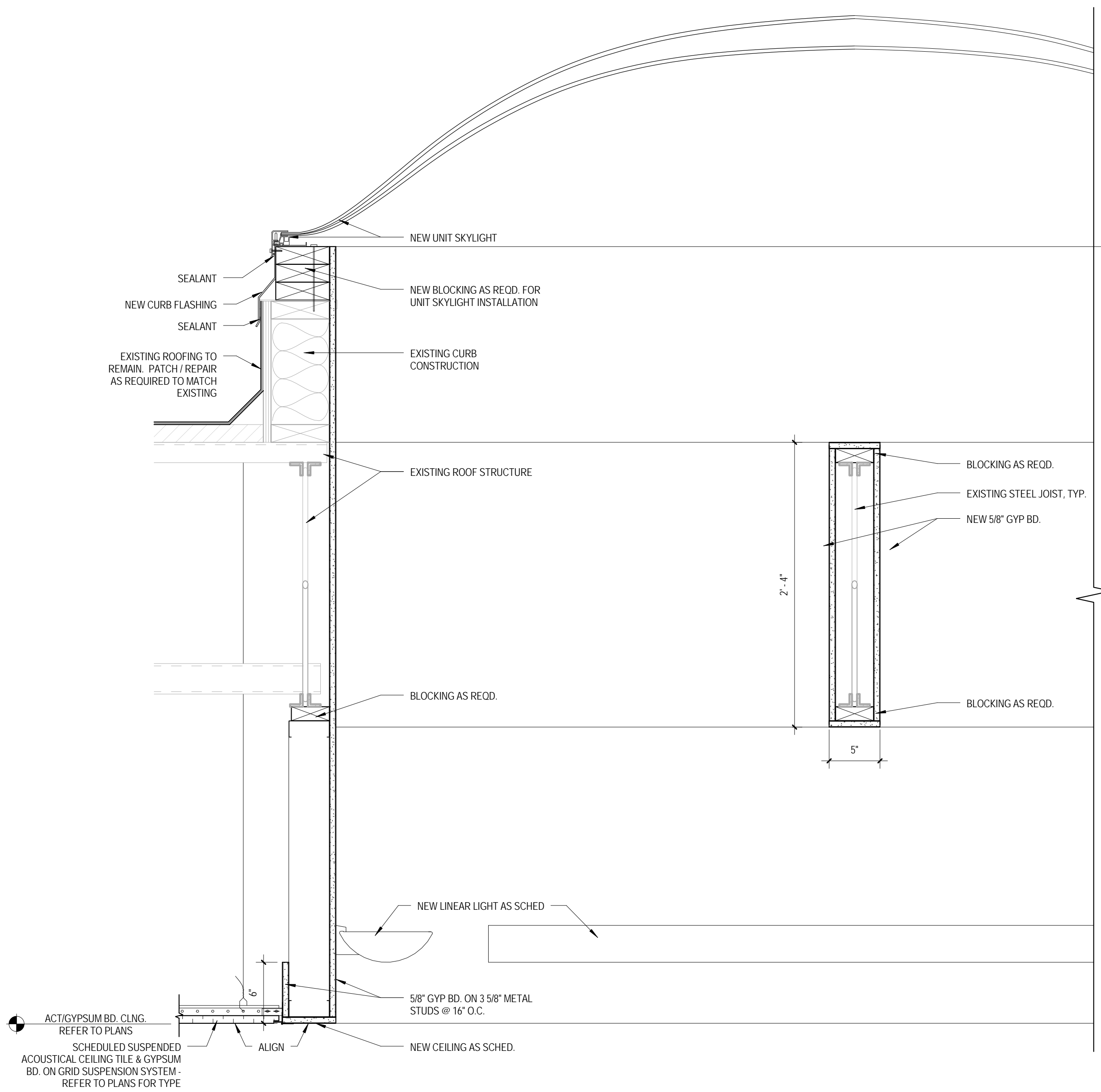
3 COLUMN FURRING DETAIL  
1 1/2" = 1'-0"



4 WALL FURRING DETAIL  
1 1/2" = 1'-0"



5 CEILING MOUNTED TOILET PARTITION DETAIL  
6" = 1'-0"



6 SECTION @ SKYLIGHT, TYP  
1 1/2" = 1'-0"

100% Construction Documents Submission	02/24/12
95% Construction Documents	02/10/12
60% Design Development	01/20/12
Schematic Design	11/30/11
Issuances:	Date

**ARCHITECT / ENGINEERS:**

**Oudens Knoop Knoop + Sachs Architects**  
2 Wisconsin Circle / Suite 820  
Chevy Chase, MD 20815-7003  
Tel: (301) 718-0080  
Fax: (301) 718-9520

**HENRY ADAMS**  
Consulting Engineers  
Mechanical Electrical & Plumbing Engineers

**Henry Adams, LLC**  
Consulting Engineers  
600 Baltimore Avenue  
Baltimore, MD 21204  
Tel: (410)296-6500  
Fax: (410)296-3156

**Woods Peacock Engineering Consultants**  
Halifax Office Park  
5250 Cherokee Avenue, Suite 420  
Alexandria, VA 22312-2052  
Tel: (703) 658-4400  
Fax: (703) 658-4404

**Patton Harris Rust & Associates**  
A Pennoni Company  
117 East Piccadilly Street, Suite 308  
Winchester, VA 22601-5002  
Tel: (540) 667-2139  
Fax: (540) 665-0493

Stamp/Seal

Drawing Title  
**INTERIOR PLAN & SKYLIGHT  
DETAILS**

Approved: Project Director

Project Title  
**BUILDING 502 E WING  
RENOVATION**

Location  
**MARTINSBURG, WV**

Date  
**01/20/12**

Checked  
Checker

Drawn  
Author

VA Project Number  
**613-12-101**

Building Number  
**502**

Drawing Number  
**A500**

Office of  
Construction  
and Facilities  
Management

