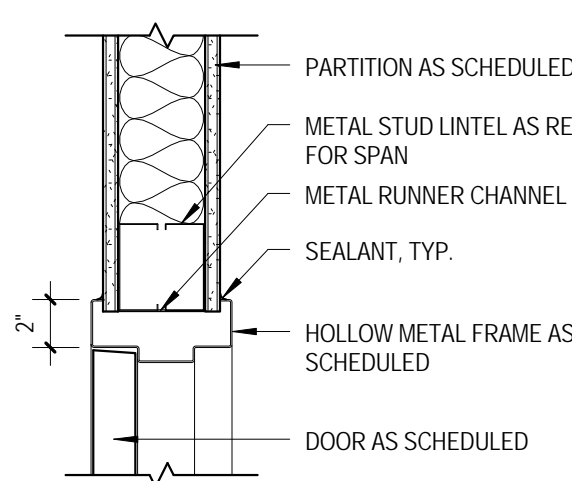


DOOR SCHEDULE																				
DOOR NO.	FIRE RATING	DOOR TYPE	DOOR				DOOR MAT'L	GLASS	DOOR FINISH	FRAME TYPE	FRAME MAT'L	FRAME			DETAIL			FRAME FINISH	HDW SET	COMMENTS
			LEAF QTY	OPNG SIZE	WIDTH	HEIGHT						THICK	HEAD	JAMB	SILL					
E100.1	-	E	2	7'-8"	7'-0"	1 3/4"	ALUM	GL-1	BR. ANOD.	2	ALUM	1A/A300	5A/700	1B/A300	BR. ANOD.					
E100.2	-	E	2	7'-8"	7'-0"	1 3/4"	ALUM	GL-1	BR. ANOD.	2	ALUM	4A/700	6A/700	1B/A300	BR. ANOD.					
E101	-	A	1	3'-0"	7'-0"	1 3/4"	SCW	---	STAIN	1	HM	1A/700	2A/700	-	PNT	1				
E102	-	D	1	3'-0"	7'-0"	1 3/4"	SCW	GL-2	STAIN	1	HM	1A/700	2A/700	-	PNT	2				
E104	-	C	1	3'-4"	7'-0"	1 3/4"	SCW	GL-2	STAIN	1	HM	1A/700	2A/700	-	PNT	3				
E105.1	-	C	1	3'-4"	7'-0"	1 3/4"	SCW	---	STAIN	1	HM	1A/700	2A/700	-	PNT	3				
E105.2	-	A	1	2'-0"	7'-0"	1 3/4"	SCW	---	STAIN	1	HM	1A/700	2A/700	-	PNT	1				
E106.1	-	A	2	5'-0"	7'-0"	1 3/4"	SCW	---	STAIN	1	HM	1A/700	2A/700	-	PNT	4				
E106.2	-	A	2	5'-0"	7'-0"	1 3/4"	SCW	---	STAIN	1	HM	1A/700	2A/700	-	PNT	4				
E106A	-	A		3'-4"	7'-0"	1 3/4"	SCW	---	STAIN	1	HM	1A/700	2A/700	-	PNT	5				
E106B	-	C	2	6'-0"	7'-0"	1 3/4"	SCW	GL-2	STAIN	1	HM	1A/700	2A/700	-	PNT	6				
E107.1	-	A	2	5'-0"	7'-0"	1 3/4"	SCW	---	STAIN	1	HM	1A/700	2A/700	-	PNT	7				
E107.2	-	A	2	5'-0"	7'-0"	1 3/4"	SCW	---	STAIN	1	HM	1A/700	2A/700	-	PNT	7				
E108	-	A		3'-4"	7'-0"	1 3/4"	SCW	---	STAIN	1	HM	1A/700	2A/700	-	PNT	8				
E108.1	-	A	1	3'-0"	7'-0"	1 3/4"	SCW	---	STAIN	1	HM	1A/700	2A/700	-	PNT	9				
E108.2	-	A	1	3'-0"	7'-0"	1 3/4"	SCW	---	STAIN	1	HM	1A/700	2A/700	-	PNT	9		OMIT COAT HOOK		
E110	-	A	1	3'-0"	7'-0"	1 3/4"	SCW	---	STAIN	1	HM	1A/700	2A/700	-	PNT	9				
E111	-	A	1	3'-0"	7'-0"	1 3/4"	SCW	---	STAIN	1	HM	1A/700	2A/700	-	PNT	1				
E112	-	A	1	3'-0"	7'-0"	1 3/4"	SCW	---	STAIN	1	HM	1A/700	2A/700	-	PNT	13				
E113	-	A	1	3'-8"	7'-0"	1 3/4"	SCW	---	STAIN	1	HM	1A/700	2A/700	-	PNT	13				
E114	-	A	1	3'-0"	7'-0"	1 3/4"	SCW	---	STAIN	1	HM	1A/700	2A/700	-	PNT	14				
E115	-	A	1	3'-0"	7'-0"	1 3/4"	SCW	---	STAIN	1	HM	1A/700	2A/700	-	PNT	14				
E116.1	-	D	2	6'-0"	7'-0"	1 3/4"	SCW	GL-2	STAIN	1	HM	1A/700	2A/700	-	PNT	6				
E116.2	-	D	2	6'-0"	7'-0"	1 3/4"	SCW	GL-2	STAIN	1	HM	1A/700	2A/700	-	PNT	6				
E117.1	-	D	2	3'-0"	7'-6"	1 3/4"	SCW	GL-2	STAIN	-	-	5A/A300	-	-	-	19		OVERHEAD SLIDING DOOR HARDWARE		
E117.2	-	D	2	3'-0"	7'-6"	1 3/4"	SCW	GL-2	STAIN	-	-	5A/A300	-	-	-	19		OVERHEAD SLIDING DOOR HARDWARE		
E118.1	-	A	2	6'-0"	7'-0"	1 3/4"	SCW	---	STAIN	1	HM	1A/700	2A/700	-	PNT					
E118.2	-	D	2	3'-0"	7'-6"	1 3/4"	SCW	GL-2	STAIN	-	-	5A/A300	-	-	-	19		OVERHEAD SLIDING DOOR HARDWARE		
E118.3	-	D	2	3'-0"	7'-6"	1 3/4"	SCW	GL-2	STAIN	-	-	5A/A300	-	-	-	19		OVERHEAD SLIDING DOOR HARDWARE		
E120	-	A	1	3'-0"	7'-0"	1 3/4"	SCW	---	STAIN	1	HM	1A/700	2A/700	-	PNT	9				
E121	-	A	1	3'-0"	7'-0"	1 3/4"	SCW	---	STAIN	1	HM	1A/700	2A/700	-	PNT	9				
E122	-	A	1	3'-0"	7'-0"	1 3/4"	SCW	---	STAIN	1	HM	1A/700	2A/700	-	PNT	9				
E123	-	A	1	3'-0"	7'-0"	1 3/4"	SCW	---	STAIN	1	HM	1A/700	2A/700	-	PNT	9				
E124	45 MIN.	A	1	3'-8"	7'-0"	1 3/4"	SCW	---	STAIN	1	HM	1A/700	2A/700	-	PNT	13				
E125	45 MIN.	A	1	3'-0"	7'-0"	1 3/4"	SCW	---	STAIN	1	HM	1A/700	2A/700	-	PNT	12				
E125A	-	A	1	3'-0"	7'-0"	1 3/4"	SCW	---	STAIN	1	HM	1A/700	2A/700	-	PNT	12				
E126	-	B	1	3'-8"	7'-0"	1 3/4"	HM	GL-2	PNT	1	HM	1A/700	2A/700	-	PNT	15				
E127	-	A	1	3'-8"	7'-0"	1 3/4"	SCW	---	STAIN	1	HM	1A/700	2A/700	-	PNT	12				
E128	-	A	1	3'-8"	7'-0"	1 3/4"	SCW	---	STAIN	1	HM	1A/700	2A/700	-	PNT	16		POWER OPERATOR		
E129	-	A	1	3'-0"	7'-0"	1 3/4"	SCW	---	STAIN	1	HM	1A/700	2A/700	-	PNT	9				
E135	-	A	1	3'-0"	7'-0"	1 3/4"	SCW	---	STAIN	1	HM	1A/700	2A/700	-	PNT	10				
E136	-	A	1	3'-0"	7'-0"	1 3/4"	SCW	---	STAIN	1	HM	1A/700	2A/700	-	PNT	11				
E137	-	A	1	3'-0"	7'-0"	1 3/4"	SCW	---	STAIN	1	HM	1A/700	2A/700	-	PNT	11				

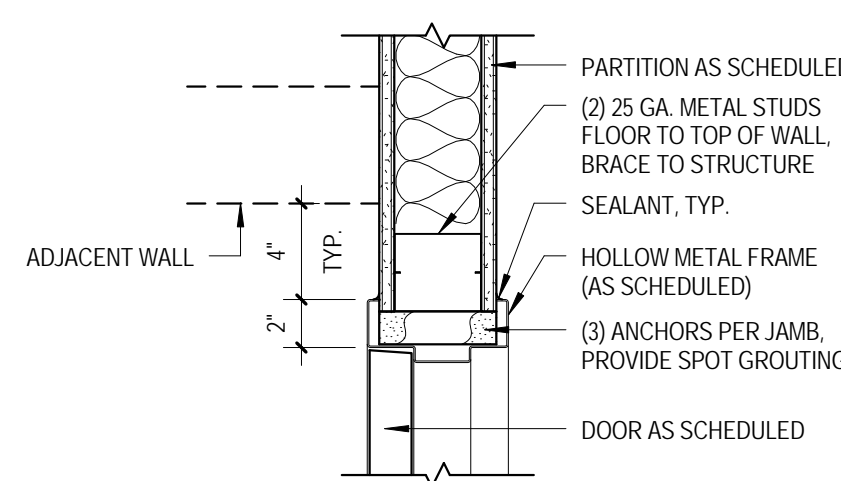
CE-2	-	A	2	7'-4"	7'-0"	1 3/4"	SCW	---									18	REFINISH DOOR AND FRAME
CE-3	-	A	2	7'-8"	7'-0"	1 3/4"	SCW	---									18	REFINISH DOOR AND FRAME
CE-4	-	A	2	7'-4"	7'-0"	1 3/4"	SCW	---									18	REFINISH DOOR AND FRAME
E110.3	-	D	2	7'-8"	7'-0"	1 3/4"	SCW	---									18	REFINISH DOOR AND FRAME
E116.4	-	A	2	6'-0"	7'-0"	1 3/4"	SCW	---									18	REFINISH DOOR AND FRAME
E116.5	-	A	2	6'-0"	7'-0"	1 3/4"	SCW	---									18	REFINISH DOOR AND FRAME
E118.4	-	A	2	5'-0"	7'-0"	1 3/4"	SCW	---									18	REFINISH DOOR AND FRAME
E130	-	A	1	3'-0"	7'-0"	1 3/4"	SCW	---									18	REFINISH DOOR AND FRAME
E131	-	A	1	2'-6"	7'-0"	1 3/4"	SCW	---									18	REFINISH DOOR AND FRAME
E132	-	A	1	3'-0"	7'-0"	1 3/4"	SCW	---									18	REFINISH DOOR AND FRAME
E133	-	A	1	3'-8"	7'-0"	1 3/4"	SCW	---									18	REFINISH DOOR AND FRAME
E138	-	A	1	3'-8"	7'-10"	1 3/4"	SCW	---									18	TEMPORARY DOOR & FRAME

GLAZING SCHEDULE:

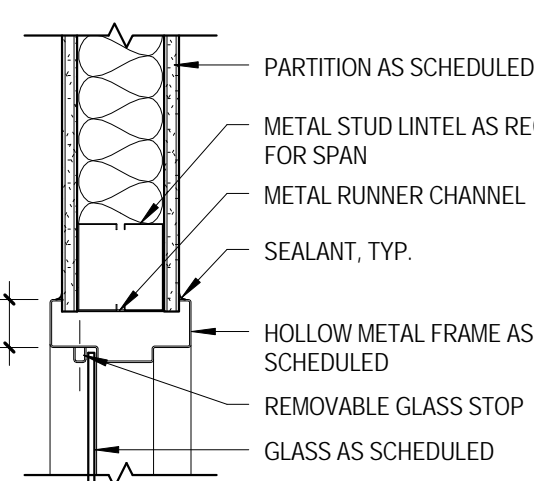
GL-1: CLEAR INSULATED SAFETY GLASS
GL-2: 1/4" CLEAR SAFETY GLASS
GL-3: CLEAR SAFETY GLASS ASSEMBLY 1/2" THICK
WP-1: 1/2" DECORATIVE RESIN PANEL



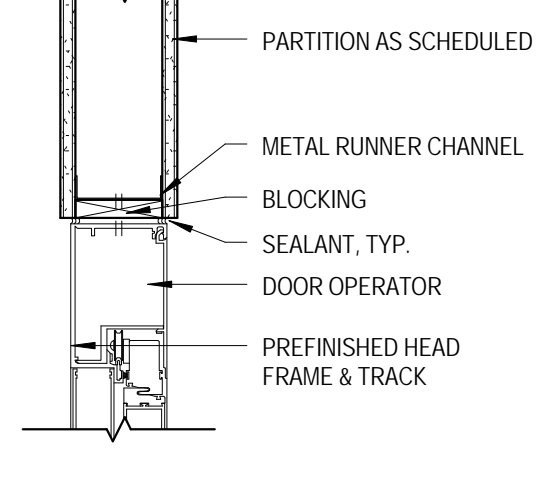
① HEAD DETAIL
1 1/2" = 1'-0"



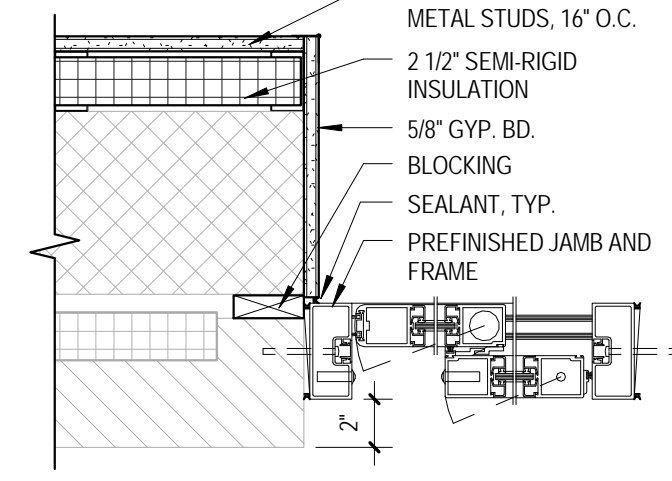
② JAMB DETAIL
1 1/2" = 1'-0"



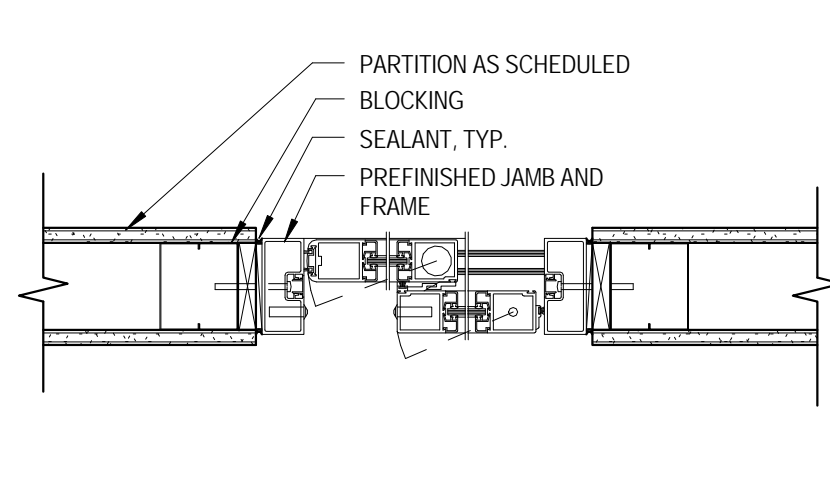
③ HEAD DETAIL - WINDOW
1 1/2" = 1'-0"



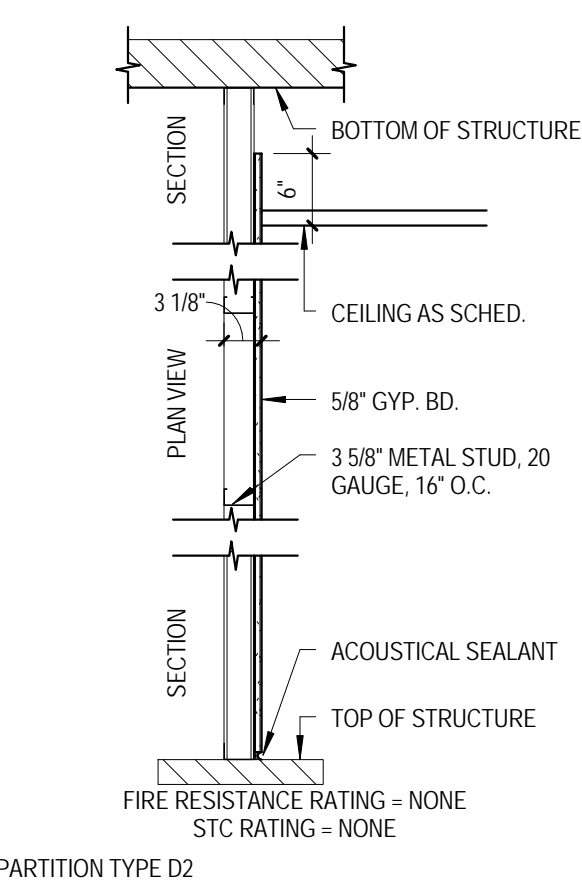
④ HEAD DETAIL - AUTO SLIDING DOOR
1 1/2" = 1'-0"



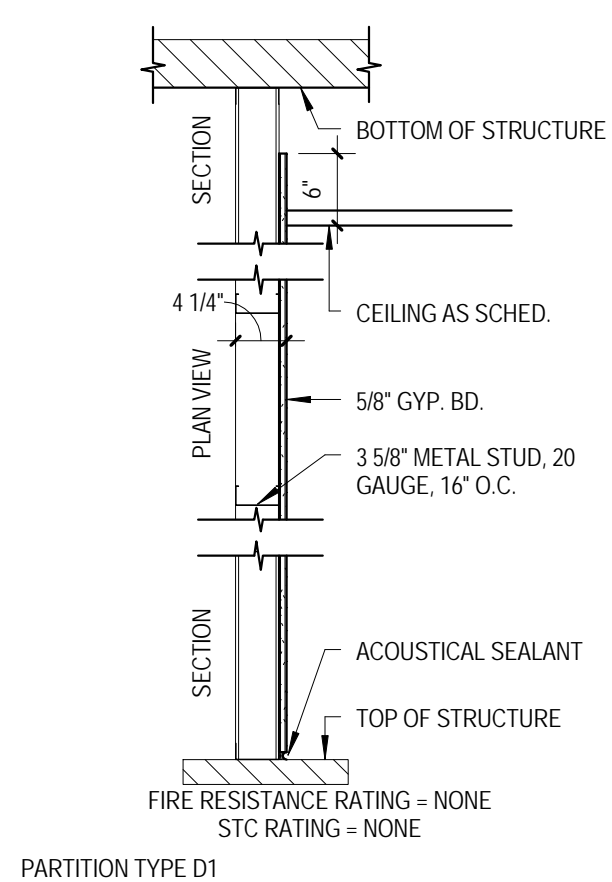
⑤ JAMB DETAIL - AUTOMATIC ENTRANCE
1 1/2" = 1'-0"



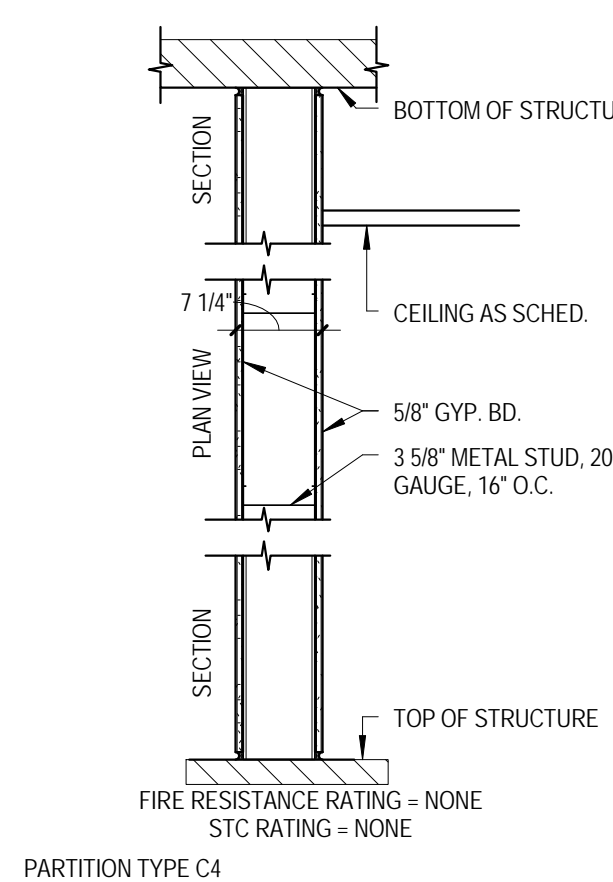
⑥ JAMB DETAIL - AUTO SLIDING DOOR
1 1/2" = 1'-0"



① PARTITION TYPES
3/4" = 1'-0"

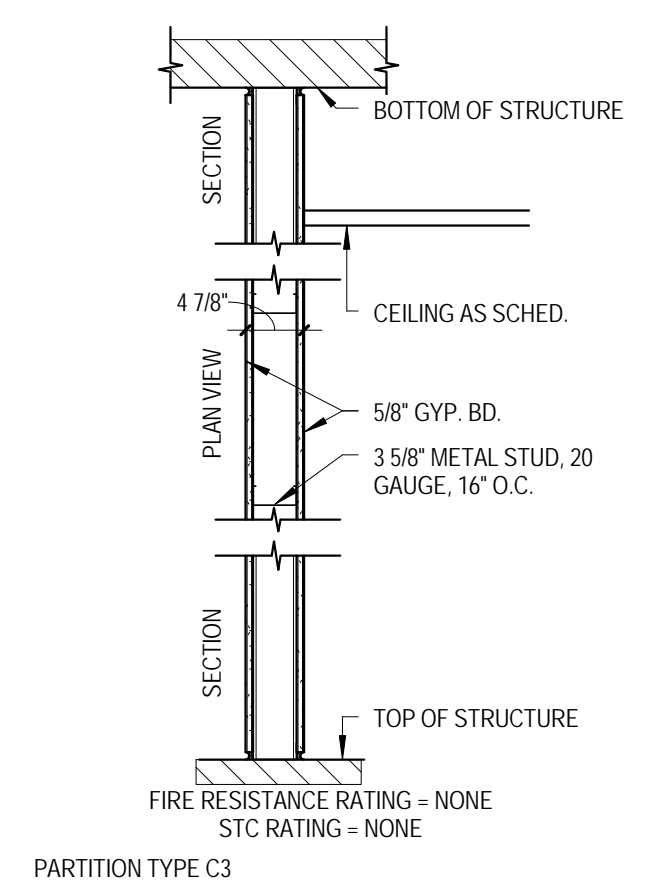


NON-RATED PARTITION



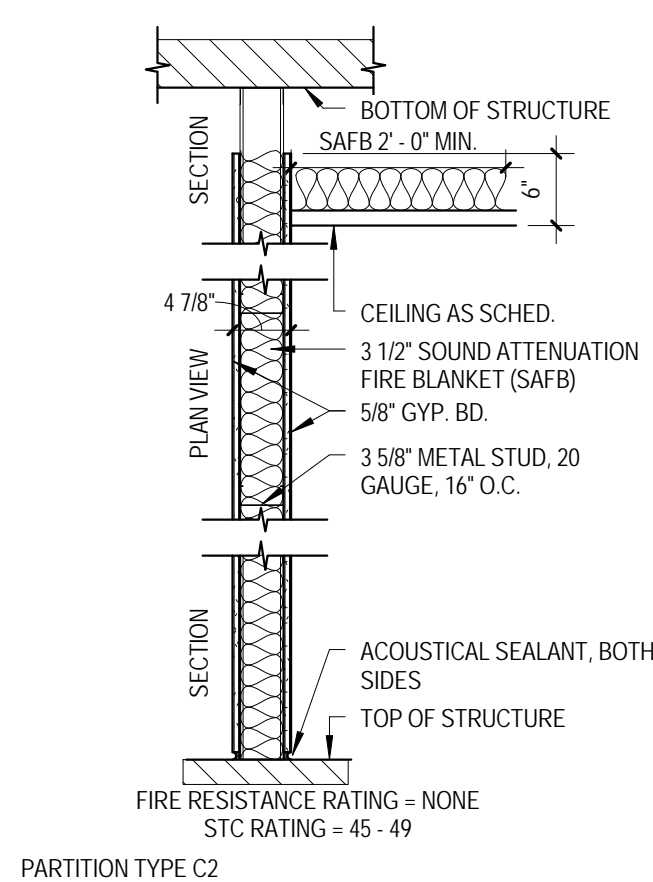
NON-RATED PARTITION

TYPE	FIRE	UL	STC	SAB	NOTES
C2.1	N/A	N/A	N/A	N/A	W/ INSULATION (SAFB)



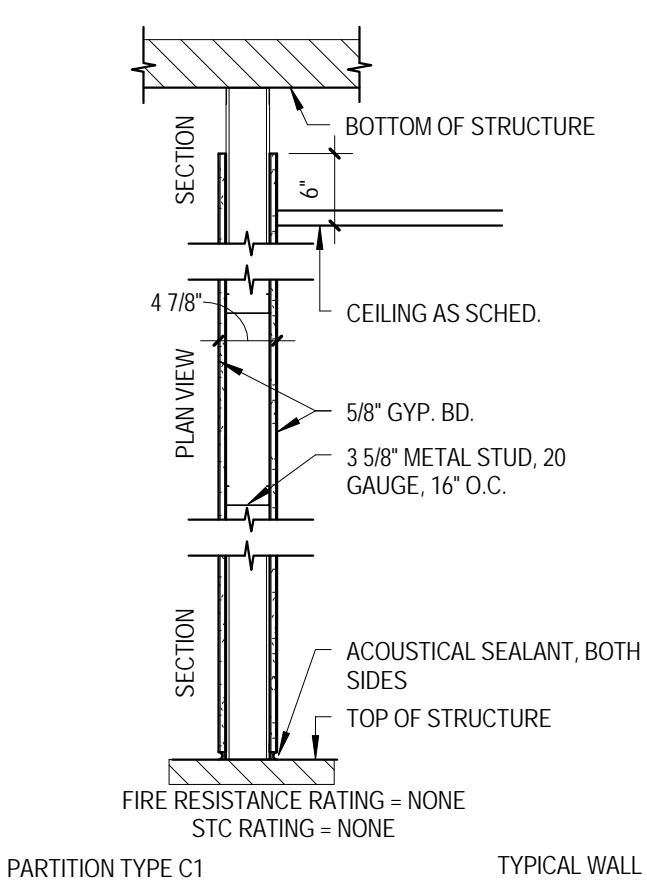
NON-RATED PARTITION

TYPE	FIRE	UL	STC	SAB	NOTES
C2.1	N/A	N/A	N/A	N/A	W/ INSULATION (SAFB)



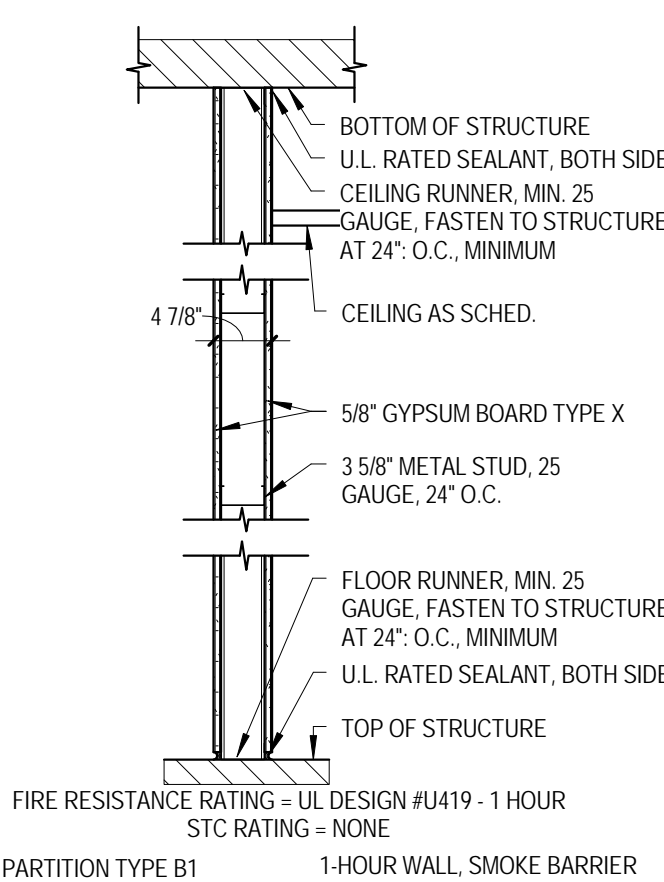
NON-RATED PARTITION

TYPE	FIRE	UL	STC	SAB	NOTES
C2.1	N/A	N/A	N/A	N/A	W/ INSULATION (SAFB)



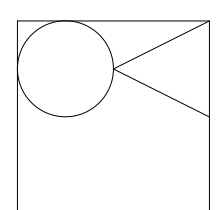
NON-RATED PARTITION

TYPE	FIRE	UL	STC	SAB	NOTES
C1.1	N/A	N/A	N/A	N/A	W/ INSULATION (SAFB)



1 HOUR PARTITION

ARCHITECT / ENGINEERS:



Oudens Knoop Knoop + Sachs Architects
2 Wisconsin Circle / Suite 820
Chevy Chase, MD 20815-7003
Tel: (301) 718-0080
Fax: (301) 718-9520

HENRY ADAMS
Consulting Engineers

Mechanical Electrical & Plumbing Engineers

Henry Adams, LLC
Consulting Engineers
600 Baltimore Avenue
Baltimore, MD 21204
Tel: (410)296-6500
Fax: (410)296-3156

Woods Peacock Engineering Consultants
Halifax Office Park
5250 Cherokee Avenue, Suite 420
Alexandria, VA 22312-2052
Tel: (703) 658-4400
Fax: (703) 658-4404

Patton Harris Rust & Associates
A Pennoni Company
117 East Piccadilly Street, Suite 308
Winchester, VA 22601-5002
Tel: (540) 667-2139
Fax: (540) 665-0493

Stamp/Seal

Drawing Title
**DOOR & FRAME TYPES, SCHEDULE
DETAILS AND PARTITION TYPES**

Approved: Project Director

Project Title
**BUILDING 502 E WING
RENOVATION**

Location
MARTINSBURG, WV

Date
01/20/12

Checked
Checker

Drawn
Author

VA Project Number
613-12-101

Building Number
502

Drawing Number
A600

Office of
Construction
and Facilities
Management

