

Report of Findings Asbestos Survey

Building 212
VA Medical Center
Chillicothe, Ohio

HSA Report

<i>HSA</i>	<i>Build</i>	<i>Material Description</i>	<i>Friability</i>	<i>Quantity</i>	<i>Units</i>	<i>Material Location</i>	<i>Sample Results</i>	<i>Potential for Disturbance</i>
01	212	Smooth Plaster	NF-II	0		Basement Throughout	Negative	Medium
01	212	Smooth Plaster	NF-II	0		First Floor Throughout	Negative	Medium
01	212	Smooth Plaster	NF-II	0		Second Floor Throughout	Negative	Medium
02	212	Semi Smooth Textured Drywall and associated Joint Compound	NF-II	0		Basement Throughout	Negative	Medium
02	212	Semi Smooth Textured Drywall and associated Joint Compound	NF-II	0		First Floor Throughout	Negative	Medium
02	212	Semi Smooth Textured Drywall and associated Joint Compound	NF-II	0		Second Floor Throughout	Negative	Medium
03	212	2' x 4' White Ceiling Tile with Microdots and Fissures	NF-II	0		Basement Throughout	Negative	Medium
03	212	2' x 4' White Ceiling Tile with Microdots and Fissures	NF-II	0		First Floor Throughout	Negative	Medium
03	212	2' x 4' White Ceiling Tile with Microdots and Fissures	NF-II	0		Second Floor Throughout	Negative	Medium
04	212	1' x 1' White Solid Bumpy Ceiling Tile Brown Glue Pods	F	770	s.f.	First Floor South Hallway	Negative	Medium

<i>HSA</i>	<i>Build</i>	<i>Material Description</i>	<i>Friability</i>	<i>Quantity</i>	<i>Units</i>	<i>Material Location</i>		<i>Sample Results</i>	<i>Potential for Disturbance</i>
04	212	1' x 1' White Solid Bumpy Ceiling Tile Brown Glue Pods	F	995	s.f.	First Floor	Center Hallway	Negative	Medium
04	212	1' x 1' White Solid Bumpy Ceiling Tile Brown Glue Pods	F	2375	s.f.	Second Floor	Hallway	Negative	Medium
05	212	White Sink Undercoating	NF-II	0		Second Floor	221	Positive	Medium
06	212	Black Sink Undercoating	NF-II	0		Second Floor	222	Positive	Medium
07	212	Fiberglass Pipe Insulation with Foil and Tar Paper Wrap	F	75	l.f.	Basement	8B	Negative	Medium
07	212	Fiberglass Pipe Insulation with Foil and Tar Paper Wrap	F	20	l.f.	Basement	8D	Negative	Medium
08	212	Fiberglass Pipe Insulation and associated White Mastic	NF-II	0		Basement	Throughout	Negative	Medium
08	212	Fiberglass Pipe Insulation and associated White Mastic	NF-II	0		First Floor	Throughout	Negative	Medium
09	212	Grey Exterior Window Caulk	NF-II	1108	l.f.	Basement	Exterior Windows	Positive	Medium
09	212	Grey Exterior Window Caulk	NF-II	2008	l.f.	First Floor	Exterior Windows	Positive	Medium
09	212	Grey Exterior Window Caulk	NF-II	2128	l.f.	Second Floor	Exterior Windows	Positive	Medium
10	212	Grey Exterior Window Glazing	NF-II	9624	l.f.	First Floor	Exterior Windows	Negative	Medium

<i>HSA</i>	<i>Build</i>	<i>Material Description</i>	<i>Friability</i>	<i>Quantity</i>	<i>Units</i>	<i>Material Location</i>		<i>Sample Results</i>	<i>Potential for Disturbance</i>
10	212	Grey Exterior Window Glazing	NF-II	9984	l.f.	Second Floor	Exterior Windows	Negative	Medium
11	212	Yellow Carpet Mastic	NF-I	0		Second Floor	220	Negative	Low
12	212	12" x 12" Tan and White Floor Tile and associated Mastic	NF-I	600	s.f.	Basement	6	Negative	Medium
12	212	12" x 12" Tan and White Floor Tile and associated Mastic	NF-I	145	s.f.	Basement	6B	Negative	Medium
12	212	12" x 12" Tan and White Floor Tile and associated Mastic	NF-I	145	s.f.	Basement	6A	Negative	Medium
12	212	12" x 12" Tan and White Floor Tile and associated Mastic	NF-I	220	s.f.	Basement	11A	Negative	Medium
12	212	12" x 12" Tan and White Floor Tile and associated Mastic	NF-I	55	s.f.	First Floor	102	Negative	Medium
12	212	12" x 12" Tan and White Floor Tile and associated Mastic	NF-I	70	s.f.	First Floor	140B	Negative	Medium
12	212	12" x 12" Tan and White Floor Tile and associated Mastic	NF-I	250	s.f.	First Floor	140	Negative	Medium
12	212	12" x 12" Tan and White Floor Tile and associated Mastic	NF-I	450	s.f.	First Floor	123	Negative	Medium

<i>HSA</i>	<i>Build</i>	<i>Material Description</i>	<i>Friability</i>	<i>Quantity</i>	<i>Units</i>	<i>Material Location</i>		<i>Sample Results</i>	<i>Potential for Disturbance</i>
12	212	12" x 12" Tan and White Floor Tile and associated Mastic	NF-I	180	s.f.	First Floor	105	Negative	Medium
12	212	12" x 12" Tan and White Floor Tile and associated Mastic	NF-I	100	s.f.	First Floor	103	Negative	Medium
12	212	12" x 12" Tan and White Floor Tile and associated Mastic	NF-I	245	s.f.	Second Floor	231	Negative	Medium
12	212	12" x 12" Tan and White Floor Tile and associated Mastic	NF-I	115	s.f.	Second Floor	202A	Negative	Medium
13	212	4" Black Cove Base and associated Mastic	NF-I	0		First Floor	Throughout	Negative	Medium
13	212	4" Black Cove Base and associated Mastic	NF-I	0		Second Floor	Throughout	Negative	Medium
14	212	2' x 4' White Ceiling Tile with Curved Fissures	NF-II	0		Basement	Throughout	Negative	Medium
14	212	2' x 4' White Ceiling Tile with Curved Fissures	NF-II	0		First Floor	Throughout	Negative	Medium
14	212	2' x 4' White Ceiling Tile with Curved Fissures	NF-II	0		Second Floor	Throughout	Negative	Medium
15	212	12" x 12" Peach Floor Tile with Multi-Colored Smudges and associated Mastic	NF-I	100	s.f.	Basement	8	Negative	Medium

<i>HSA</i>	<i>Build</i>	<i>Material Description</i>	<i>Friability</i>	<i>Quantity</i>	<i>Units</i>	<i>Material Location</i>		<i>Sample Results</i>	<i>Potential for Disturbance</i>
15	212	12" x 12" Peach Floor Tile with Multi-Colored Smudges and associated Mastic	NF-I	110	s.f.	Basement	8E	Negative	Medium
15	212	12" x 12" Peach Floor Tile with Multi-Colored Smudges and associated Mastic	NF-I	1440	s.f.	Basement	8B	Negative	Medium
15	212	12" x 12" Peach Floor Tile with Multi-Colored Smudges and associated Mastic	NF-I	110	s.f.	Basement	8C	Negative	Medium
15	212	12" x 12" Peach Floor Tile with Multi-Colored Smudges and associated Mastic	NF-I	100	s.f.	Basement	8A	Negative	Medium
16	212	12" x 12" Off-White Floor Tile with Brown Streaks and associated Mastic	NF-I	50	s.f.	Basement	13	Positive	Medium
16	212	12" x 12" Off-White Floor Tile with Brown Streaks and associated Mastic	NF-I	145	s.f.	Basement	5	Positive	Medium
16	212	12" x 12" Off-White Floor Tile with Brown Streaks and associated Mastic	NF-I	170	s.f.	Basement	South Stairwell	Positive	Medium
16	212	12" x 12" Off-White Floor Tile with Brown Streaks and associated Mastic	NF-I	210	s.f.	Basement	13B	Positive	Medium

<i>HSA</i>	<i>Build</i>	<i>Material Description</i>	<i>Friability</i>	<i>Quantity</i>	<i>Units</i>	<i>Material Location</i>		<i>Sample Results</i>	<i>Potential for Disturbance</i>
16	212	12" x 12" Off-White Floor Tile with Brown Streaks and associated Mastic	NF-I	280	s.f.	Basement	14	Positive	Medium
16	212	12" x 12" Off-White Floor Tile with Brown Streaks and associated Mastic	NF-I	2080	s.f.	Basement	12	Positive	Medium
16	212	12" x 12" Off-White Floor Tile with Brown Streaks and associated Mastic	NF-I	1660	s.f.	Basement	Hallway	Positive	Medium
16	212	12" x 12" Off-White Floor Tile with Brown Streaks and associated Mastic	NF-I	300	s.f.	Basement	15	Positive	Medium
16	212	12" x 12" Off-White Floor Tile with Brown Streaks and associated Mastic	NF-I	170	s.f.	Basement	North Stairwell	Positive	Medium
16	212	12" x 12" Off-White Floor Tile with Brown Streaks and associated Mastic	NF-I	25	s.f.	Basement	1B	Positive	Medium
17	212	12" x 12" White Floor Tile with Dark Streaks and associated Mastic	NF-I	1215	s.f.	Basement	11	Positive	Medium
18	212	Yellow and Black Carpet Mastic	NF-I	220	s.f.	Basement	8F	Negative	Low
18	212	Yellow and Black Carpet Mastic	NF-I	135	s.f.	Basement	8D	Negative	Low
19	212	9" x 9" Green and White (Checker Pattern) Floor Tile and associated Mastic	NF-I	235	s.f.	Basement	Hallway	Positive	Medium

<i>HSA</i>	<i>Build</i>	<i>Material Description</i>	<i>Friability</i>	<i>Quantity</i>	<i>Units</i>	<i>Material Location</i>		<i>Sample Results</i>	<i>Potential for Disturbance</i>
19	212	9" x 9" Green and White (Checker Pattern) Floor Tile and associated Mastic	NF-I	315	s.f.	First Floor	122	Positive	Medium
19	212	9" x 9" Green and White (Checker Pattern) Floor Tile and associated Mastic	NF-I	420	s.f.	First Floor	106	Positive	Medium
19	212	9" x 9" Green and White (Checker Pattern) Floor Tile and associated Mastic	NF-I	160	s.f.	First Floor	139	Positive	Medium
19	212	9" x 9" Green and White (Checker Pattern) Floor Tile and associated Mastic	NF-I	300	s.f.	First Floor	Elevator Hallway	Positive	Medium
19	212	9" x 9" Green and White (Checker Pattern) Floor Tile and associated Mastic	NF-I	160	s.f.	First Floor	121	Positive	Medium
19	212	9" x 9" Green and White (Checker Pattern) Floor Tile and associated Mastic	NF-I	2000	s.f.	First Floor	Center Hallway	Positive	Medium
19	212	9" x 9" Green and White (Checker Pattern) Floor Tile and associated Mastic underneath Carpet	NF-I	135	s.f.	Second Floor	204	Positive	Medium
19	212	9" x 9" Green and White (Checker Pattern) Floor Tile and associated Mastic	NF-I	450	s.f.	Second Floor	205	Positive	Medium
19	212	9" x 9" Green and White (Checker Pattern) Floor Tile and associated Mastic underneath Carpet	NF-I	200	s.f.	Second Floor	220	Positive	Medium

<i>HSA</i>	<i>Build</i>	<i>Material Description</i>	<i>Friability</i>	<i>Quantity</i>	<i>Units</i>	<i>Material Location</i>	<i>Sample Results</i>	<i>Potential for Disturbance</i>
19	212	9" x 9" Green and White (Checker Pattern) Floor Tile and associated Mastic underneath Carpet	NF-I	90	s.f.	Second Floor 203	Positive	Medium
19	212	9" x 9" Green and White (Checker Pattern) Floor Tile and associated Mastic	NF-I	155	s.f.	Second Floor 219	Positive	Medium
19	212	9" x 9" Green and White (Checker Pattern) Floor Tile and associated Mastic	NF-I	405	s.f.	Second Floor 239	Positive	Medium
19	212	9" x 9" Green and White (Checker Pattern) Floor Tile and associated Mastic	NF-I	100	s.f.	Second Floor 226	Positive	Medium
19	212	9" x 9" Green and White (Checker Pattern) Floor Tile and associated Mastic	NF-I	2000	s.f.	Second Floor Center Hallway	Positive	Medium
19	212	9" x 9" Green and White (Checker Pattern) Floor Tile and associated Mastic	NF-I	100	s.f.	Second Floor 221A	Positive	Medium
21	212	9" x 9" White with Green Smudges Floor Tile and associated Mastic underneath Carpet	NF-I	365	s.f.	First Floor 107	Positive	Low
21	212	9" x 9" White with Green Smudges Floor Tile and associated Mastic underneath Carpet	NF-I	220	s.f.	First Floor 110	Positive	Low
21	212	9" x 9" White with Green Smudges Floor Tile and associated Mastic	NF-I	85	s.f.	First Floor 136	Positive	Medium

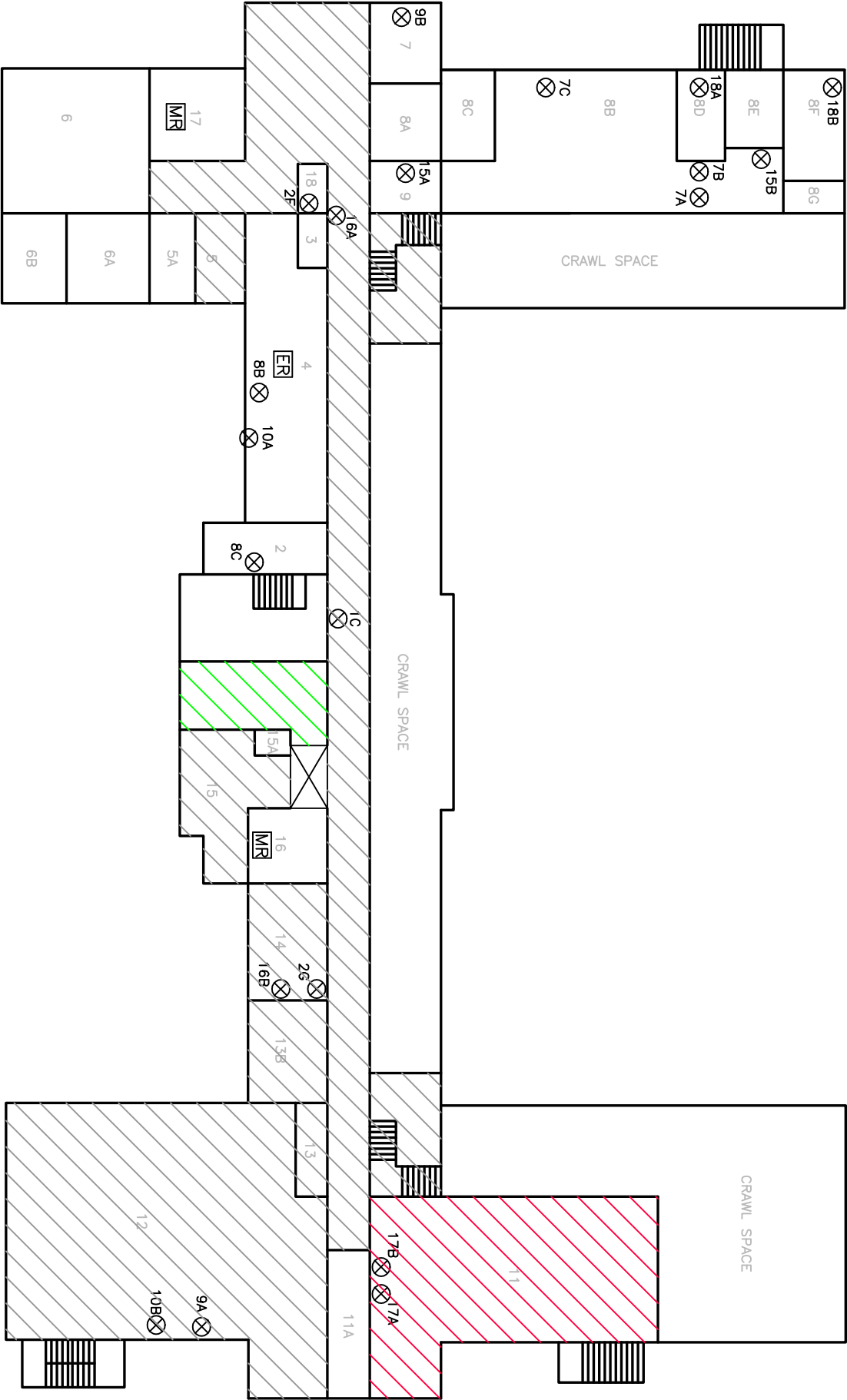
<i>HSA</i>	<i>Build</i>	<i>Material Description</i>	<i>Friability</i>	<i>Quantity</i>	<i>Units</i>	<i>Material Location</i>		<i>Sample Results</i>	<i>Potential for Disturbance</i>
21	212	9" x 9" White with Green Smudges Floor Tile and associated Mastic	NF-I	200	s.f.	First Floor	Southwest Hallway	Positive	Medium
21	212	9" x 9" White with Green Smudges Floor Tile and associated Mastic underneath Carpet	NF-I	220	s.f.	First Floor	108	Positive	Low
21	212	9" x 9" White with Green Smudges Floor Tile and associated Mastic underneath Carpet	NF-I	540	s.f.	First Floor	109	Positive	Low
21	212	9" x 9" White with Green Smudges Floor Tile and associated Mastic	NF-I	100	s.f.	First Floor	127	Positive	Medium
21	212	9" x 9" White with Green Smudges Floor Tile and associated Mastic underneath Carpet	NF-I	145	s.f.	First Floor	111	Positive	Low
21	212	9" x 9" White with Green Smudges Floor Tile and associated Mastic	NF-I	265	s.f.	First Floor	132	Positive	Medium
21	212	9" x 9" White with Green Smudges Floor Tile and associated Mastic	NF-I	365	s.f.	First Floor	138	Positive	Medium
21	212	9" x 9" White with Green Smudges Floor Tile and associated Mastic	NF-I	80	s.f.	First Floor	Northwest Hallway	Positive	Medium
21	212	9" x 9" White with Green Smudges Floor Tile and associated Mastic	NF-I	200	s.f.	Second Floor	Southwest Hallway	Positive	Medium

<i>HSA</i>	<i>Build</i>	<i>Material Description</i>	<i>Friability</i>	<i>Quantity</i>	<i>Units</i>	<i>Material Location</i>	<i>Sample Results</i>	<i>Potential for Disturbance</i>
21	212	9" x 9" White with Green Smudges Floor Tile and associated Mastic	NF-I	135	s.f.	Second Floor 209	Positive	Medium
21	212	9" x 9" White with Green Smudges Floor Tile and associated Mastic	NF-I	190	s.f.	Second Floor 217	Positive	Medium
21	212	9" x 9" White with Green Smudges and associated Mastic	NF-I	220	s.f.	Second Floor 206	Positive	Medium
21	212	9" x 9" White with Green Smudges Floor Tile and associated Mastic	NF-I	220	s.f.	Second Floor 236	Positive	Medium
21	212	9" x 9" White with Green Smudges Floor Tile and associated Mastic	NF-I	200	s.f.	Second Floor Northeast Hallway	Positive	Medium
21	212	9" x 9" White with Green Smudges Floor Tile and associated Mastic	NF-I	510	s.f.	Second Floor 207	Positive	Medium
21	212	9" x 9" White with Green Smudges Floor Tile and associated Mastic	NF-I	245	s.f.	Second Floor 213	Positive	Medium
21	212	9" x 9" White with Green Smudges and associated Mastic	NF-I	220	s.f.	Second Floor 208	Positive	Medium
21	212	9" x 9" White with Green Smudges Floor Tile and associated Mastic	NF-I	135	s.f.	Second Floor 235	Positive	Medium

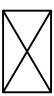





<i>HSA</i>	<i>Build</i>	<i>Material Description</i>	<i>Friability</i>	<i>Quantity</i>	<i>Units</i>	<i>Material Location</i>	<i>Sample Results</i>	<i>Potential for Disturbance</i>
21	212	9" x 9" White with Green Smudges Floor Tile and associated Mastic	NF-I	510	s.f.	Second Floor 237	Positive	Medium
22	212	9" x 9" White with Brown Smudges Floor Tile and associated Mastic	NF-I	265	s.f.	Second Floor 240	Positive	Medium
22	212	9" x 9" White with Brown Smudges Floor Tile and associated Mastic	NF-I	245	s.f.	Second Floor 231	Positive	Medium
22	212	9" x 9" White with Brown Smudges Floor Tile and associated Mastic	NF-I	240	s.f.	Second Floor 224	Positive	Medium
23	212	9" x 9" Green Floor Tile and associated Mastic	NF-I	245	s.f.	First Floor 131	Positive	Medium
23	212	9" x 9" Green Floor Tile and associated Mastic	NF-I	300	s.f.	First Floor Northeast Hallway	Positive	Medium
23	212	9" x 9" Green Floor Tile and associated Mastic	NF-I	300	s.f.	First Floor Southeast Hallway	Positive	Medium
23	212	9" x 9" Green Floor Tile and associated Mastic underneath Carpet	NF-I	265	s.f.	First Floor 115	Positive	Low
23	212	9" x 9" Green Floor Tile and associated Mastic underneath Carpet	NF-I	220	s.f.	First Floor 118	Positive	Low
23	212	9" x 9" Green Floor Tile and associated Mastic underneath Carpet	NF-I	480	s.f.	First Floor 117	Positive	Low

<i>HSA</i>	<i>Build</i>	<i>Material Description</i>	<i>Friability</i>	<i>Quantity</i>	<i>Units</i>	<i>Material Location</i>		<i>Sample Results</i>	<i>Potential for Disturbance</i>
23	212	9" x 9" Green Floor Tile and associated Mastic underneath Carpet	NF-I	220	s.f.	First Floor	116	Positive	Low
23	212	9" x 9" Green Floor Tile and associated Mastic	NF-I	480	s.f.	First Floor	130	Positive	Medium
23	212	9" x 9" Green Floor Tile and associated Mastic	NF-I	135	s.f.	First Floor	129	Positive	Medium
23	212	9" x 9" Green Floor Tile and associated Mastic	NF-I	220	s.f.	First Floor	128	Positive	Medium
23	212	9" x 9" Green Floor Tile and associated Mastic underneath Carpet	NF-I	265	s.f.	First Floor	119	Positive	Low
23	212	9" x 9" Green Floor Tile and associated Mastic	NF-I	265	s.f.	Second Floor	216	Positive	Medium
23	212	9" x 9" Green Floor Tile and associated Mastic	NF-I	450	s.f.	Second Floor	215	Positive	Medium
23	212	9" x 9" Green Floor Tile and associated Mastic	NF-I	235	s.f.	Second Floor	227	Positive	Medium
23	212	9" x 9" Green Floor Tile and associated Mastic	NF-I	220	s.f.	Second Floor	214	Positive	Medium
23	212	9" x 9" Green Floor Tile and associated Mastic	NF-I	550	s.f.	Second Floor	Northeast Hallway	Positive	Medium
23	212	9" x 9" Green Floor Tile and associated Mastic	NF-I	220	s.f.	Second Floor	230	Positive	Medium
23	212	9" x 9" Green Floor Tile and associated Mastic	NF-I	220	s.f.	Second Floor	238	Positive	Medium
23	212	9" x 9" Green Floor Tile and associated Mastic	NF-I	135	s.f.	Second Floor	228	Positive	Medium

<i>HSA</i>	<i>Build</i>	<i>Material Description</i>	<i>Friability</i>	<i>Quantity</i>	<i>Units</i>	<i>Material Location</i>		<i>Sample Results</i>	<i>Potential for Disturbance</i>
23	212	9" x 9" Green Floor Tile and associated Mastic	NF-I	300	s.f.	Second Floor	Southeast Hallway	Positive	Medium
23	212	9" x 9" Green Floor Tile and associated Mastic	NF-I	450	s.f.	Second Floor	229	Positive	Medium



LEGEND

-  ELEVATOR
-  ELECTRICAL ROOM
-  MECHANICAL ROOM
-  ROOM NUMBER
-  APPROXIMATE ASBESTOS SAMPLE LOCATION
-  HSA-09: GREY EXTERIOR WINDOW CAULK
-

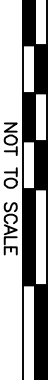



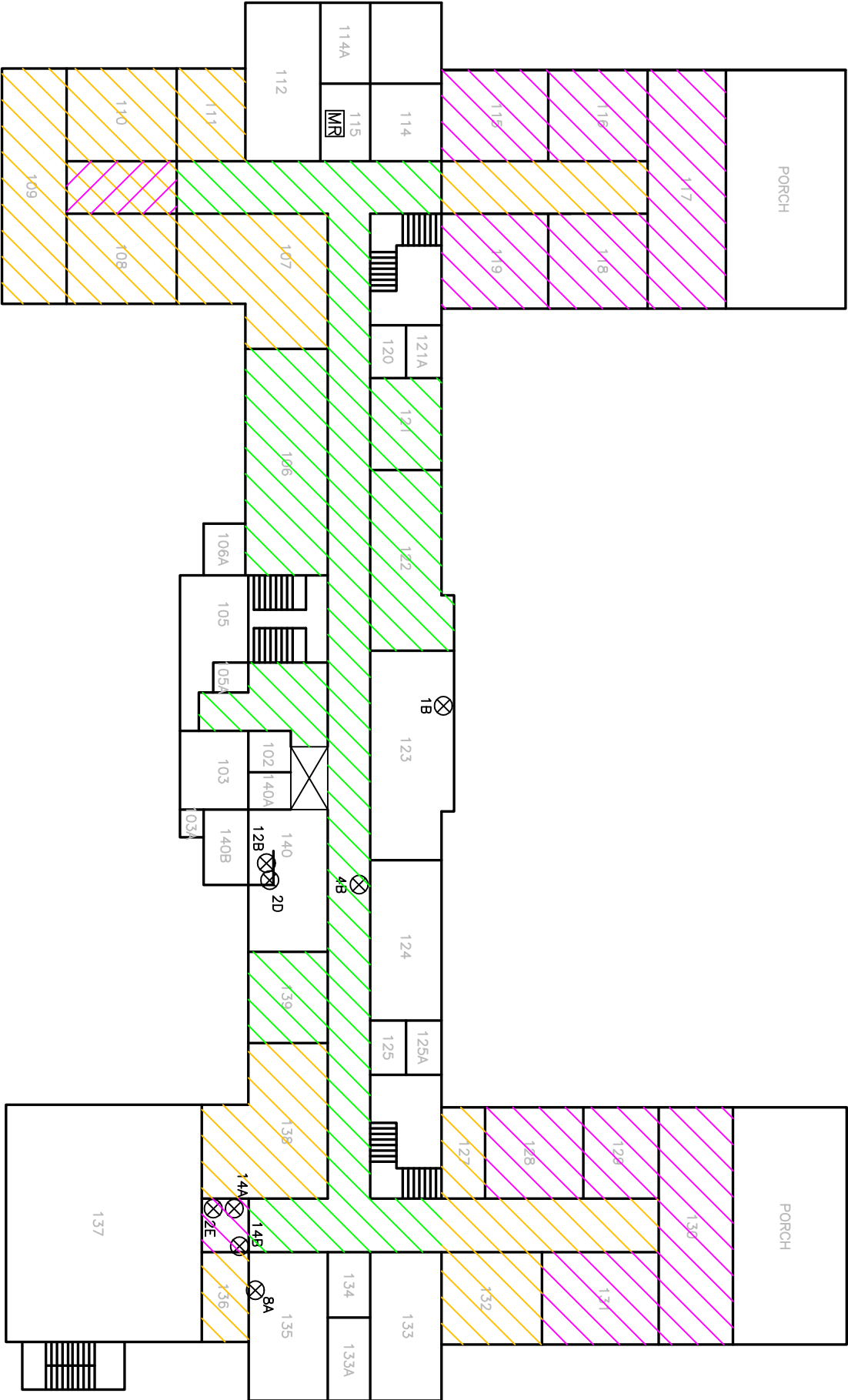
FIGURE 18.0

ASBESTOS 3-YEAR RE-INSPECTION

BUILDING 212 BASEMENT SAMPLE AND ACM LOCATION MAP
CHILLICOTHE VA MEDICAL CENTER
17273 SR 104
CHILLICOTHE, OHIO

PREPARED FOR
U.S. DEPARTMENT OF VETERAN AFFAIRS
CHILLICOTHE, OHIO

DRAWN	BDS/01-25-10	CHECKED
REVISED		APPROVED
JOB NO.	5887.01	
DRAWING NUMBER	588701-212.OE	



LEGEND

ELEVATOR

MECHANICAL ROOM

ROOM NUMBER

APPROXIMATE ASBESTOS SAMPLE LOCATION

ALL EXTERIOR WINDOWS HAVE ACM CAULK

HSA-19: 9"x9" GREEN AND WHITE CHECKER PATTERN FLOOR TILE AND ASSOCIATED MASTIC

HSA-21: 9"x9" WHITE WITH GREEN SMUDGES FLOOR TILE AND ASSOCIATED MASTIC

HSA-23: 9"x9" GREEN FLOOR TILE AND ASSOCIATED MASTIC

NOT TO SCALE

FIGURE 18.1

ASBESTOS 3-YEAR RE-INSPECTION

BUILDING 212 FIRST FLOOR SAMPLE AND ACM LOCATION MAP

CHILLICOTHE VA MEDICAL CENTER

17273 SR 104

CHILLICOTHE, OHIO

PREPARED FOR

U.S. DEPARTMENT OF VETERAN AFFAIRS

CHILLICOTHE, OHIO

DRAWN

BDS/01-25-10

CHECKED

REVISED

APPROVED

JOB NO.

5887.01

DRAWING NUMBER

588701-212.1E

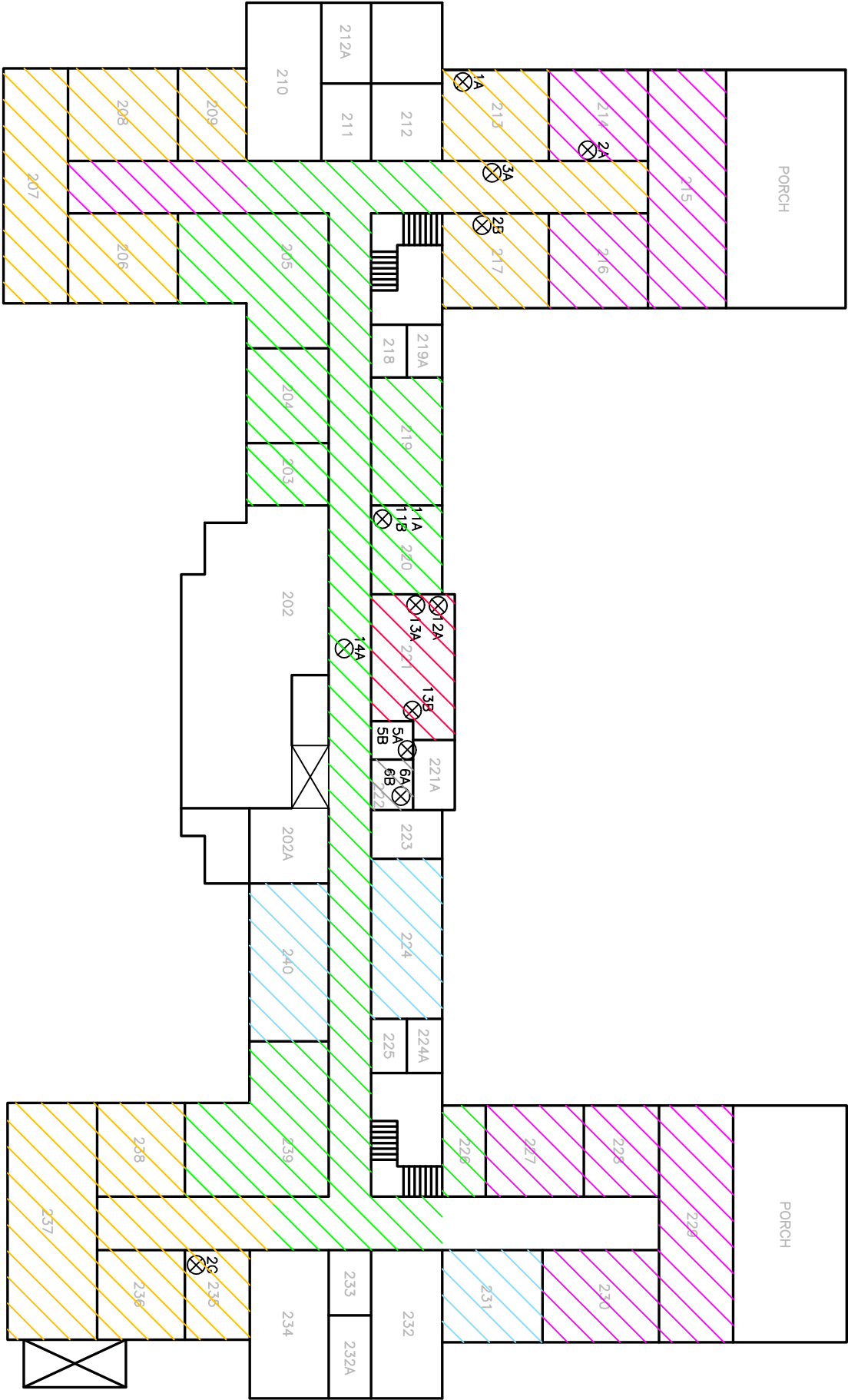


FIGURE 18.2

ASBESTOS 3-YEAR RE-INSPECTION
BUILDING 212 SECOND FLOOR SAMPLE AND ACM LOCATION MAP
CHILLICOTHE VA MEDICAL CENTER
17273 SR 104
CHILLICOTHE, OHIO

PREPARED FOR
U.S. DEPARTMENT OF VETERAN AFFAIRS
CHILLICOTHE, OHIO

DRAWN	BDS/01-25-10	CHECKED	
REVISED		APPROVED	
JOB NO.	5887.01		
DRAWING NUMBER	588701-212.2E		

