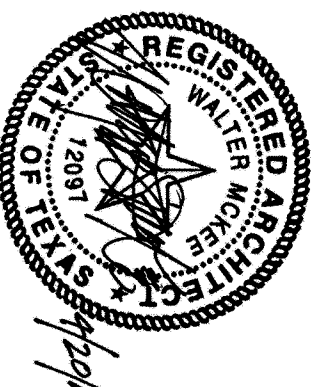


Revisions	Date
ISOMETRIC DESIGN SUBMISSION	04/02/10
DESIGN DEVELOPMENT SUBMISSION	04/03/10
CONSTRUCTION DOCUMENT SUBMISSION	11/22/10
BIDDING FOR BIDS	12/01/11
Δ AMENDMENT NO. 06	04/20/12

CONSULTANTS:



ARCHITECT/ENGINEERS:

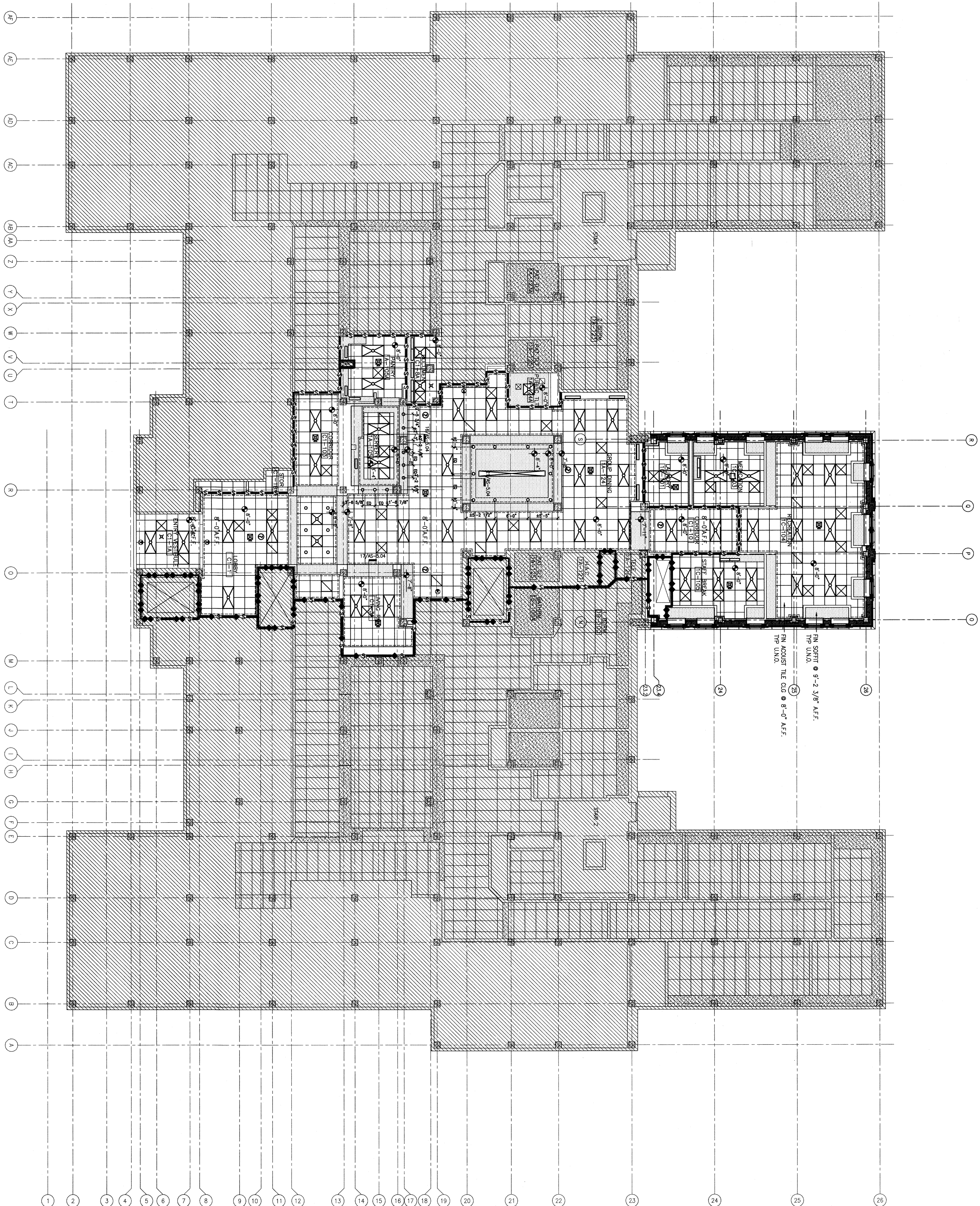
WILSON ARCHITECTURAL GROUP
5051 WESTHEIMER, SUITE 200 HOUSTON, TEXAS 77056 TELEPHONE (713) 621-6774

MEP ENGINEERS
STRUCTURAL ENGINEERS
FIRE PROTECTION ENGINEERS
CIVIL ENGINEERS

BURNS DELATTE AND McCOY, INC.
PINNACLE STRUCTURAL
PROTECTION DEVELOPMENT INC.
BREMER AND ESCALANTE

FIRST FLOOR REFLECTED CEILING PLAN

SCALE: 1/8"=1'-0"

FIN SOFTT 9'-2 3/8" A.F.F.
TYP LINEFIN SOFTT
TYP IIINO

FIN ACOUST TILE CLG @ 8'-0" A.F.F.

FIN ACOUS

PERIMETER A/C SLOT

4'-0" UNDER-CABINET TASK LIGHTING;
COORDINATE W/MEP DWGS AND ELEVATIONS

NEW WALL WASHER
CENTER IN TILE U.N.O

ON
NEW BLDG. STND. DOWNLIGHT
CENTER IN TILE U.N.O.

BLDG. STND. DOWNLIGHT RELOCATED TO POSITION SHOWN
CENTER IN TILE U.N.O.

BUILDING STANDARD EXIT LIGHT

SPEAKER

FIRE ALARM CHIME & STROBE

ПРИЛОЖЕНИЕ 1

INDICATES EXTENT OF CROWN MOULDING

INDICATES EXTENT OF CROWN MOULDING

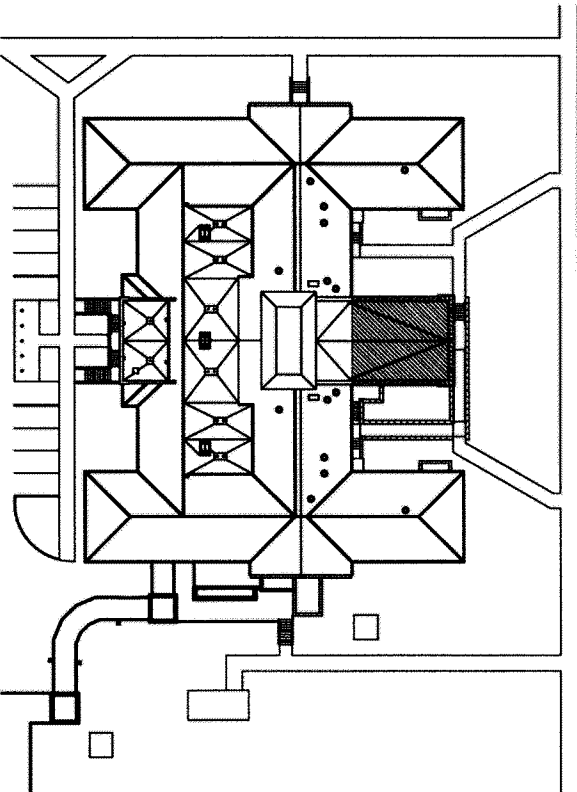
03
SCALE: N.T.S.

SCALE: N.T.S.

1. REFER TO SHEET 11-AS-1.04 & 11-AS-1.05 FOR FLOOR FINISHES PLANS OF THESE AREAS
2. REFER TO SHEET 11-AS-1.06 & 11-AS-1.07 FOR FLOOR EQUIPMENT PLANS OF THESE AREAS
3. REFER TO SHEETS 11-AS-2.00 FOR INFORMATION REGARDING TO EXTERIOR BUILDING ELEVATIONS
4. GENERAL CONTRACTOR TO PROVIDE NEW CEILING GRID, U.O.N.
5. REFER TO ELECTRICAL DRAWINGS FOR CIRCUITING AND SWITCHING OF LIGHTS.
6. ADVISE ARCHITECT OF ANY CONFLICTS BETWEEN LIGHTING AND EXISTING OR NEW CONSTRUCTION. DO NOT PROCEED WITH CONSTRUCTION WITHOUT RESOLUTION OF CONFLICT.

GENERAL NOTES

SCALE: N.T.S.



KEY PLAN

"ISSUED FOR BIDS"

FULLY SPRINKLERED

**Office of
Construction
and Facilities
Management**

11

DO NOT SCALE THESE DRAWINGS. Q.C. TO FIELD VERIFY DIMENSIONS

FIN. FLR. = 585.53

FIRST FLOOR REFLECTED CEILING PLAN

BLDG 11 & NEW ADDITION

Approved Project Director

LOCATION!
WACO, TEXAS

Date

11-AS-1.09F	TRAM
-------------	------

1