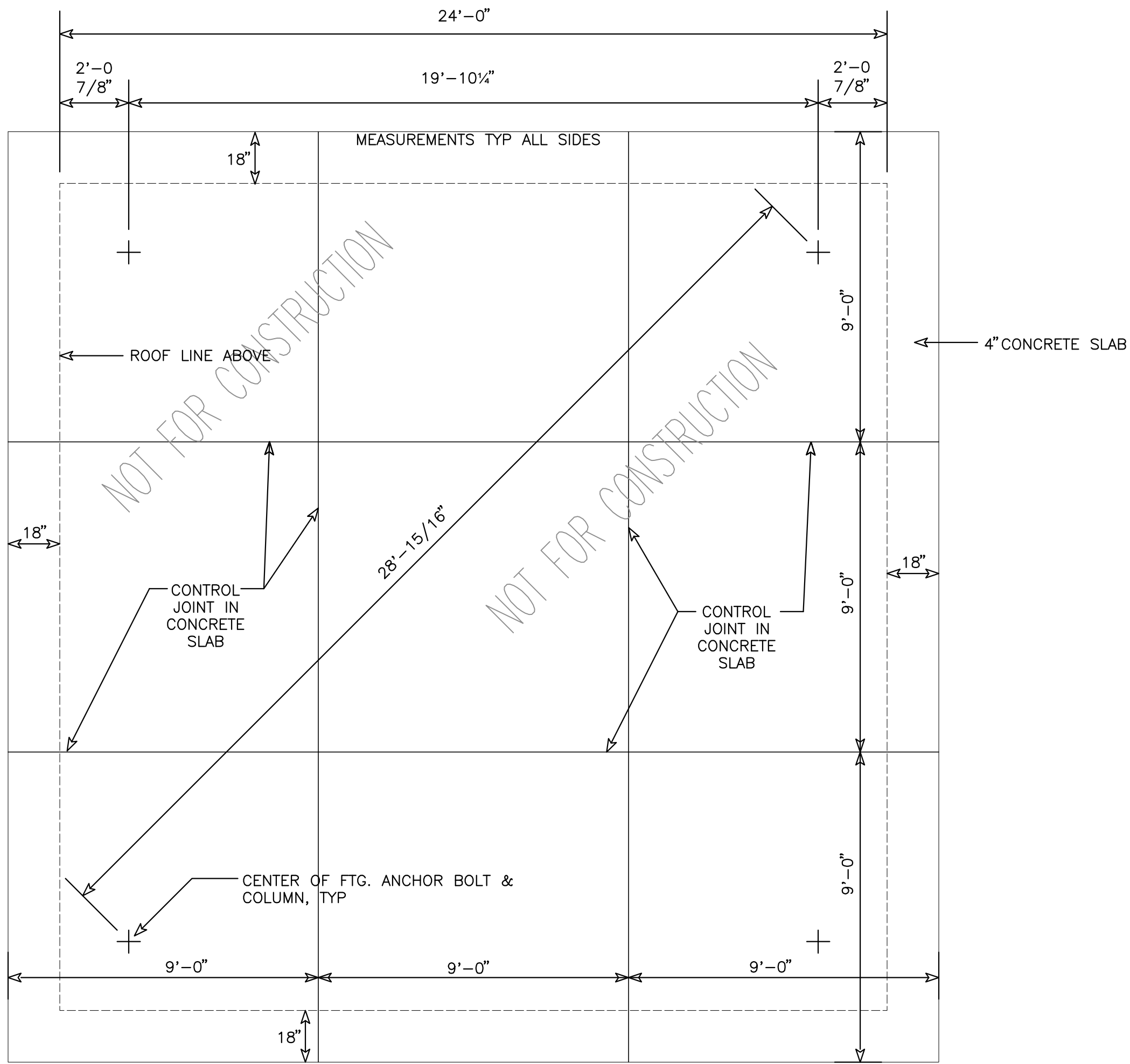
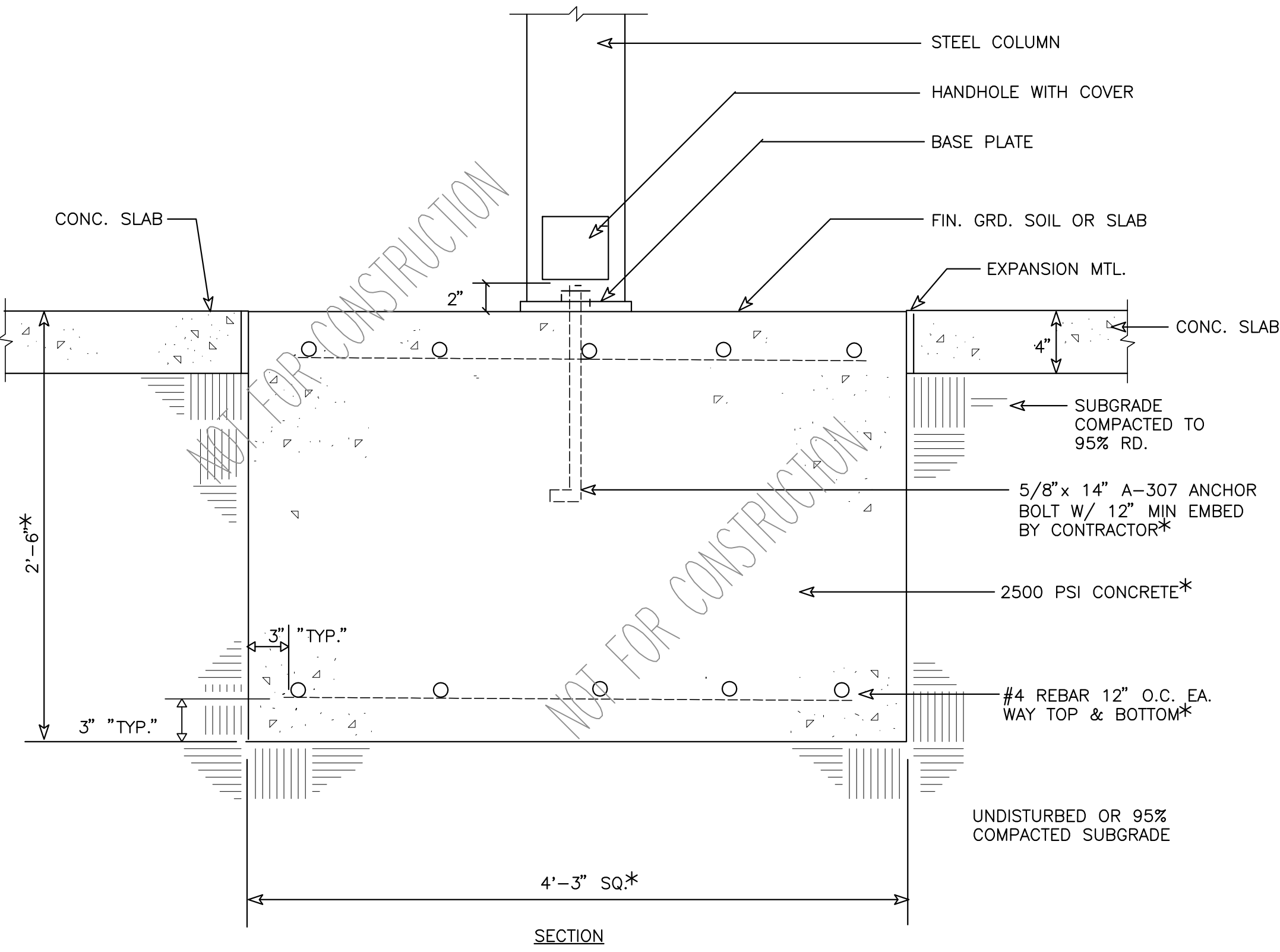


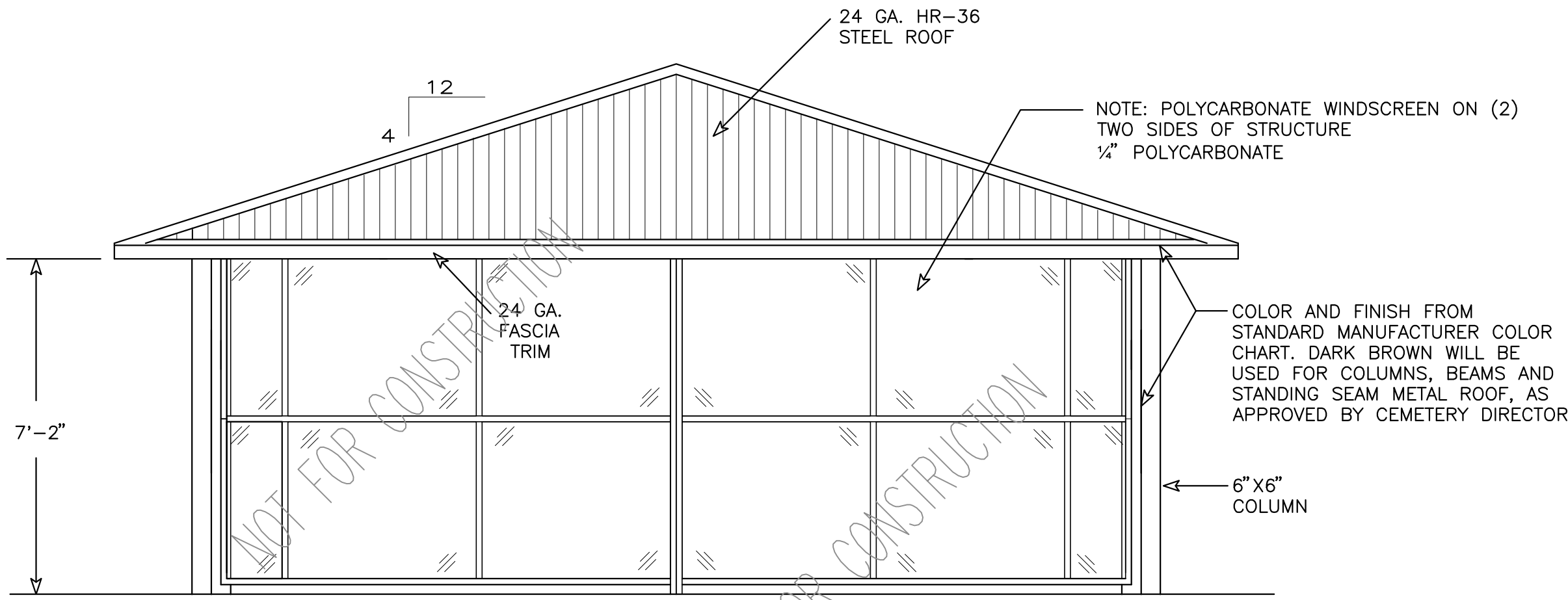
A  
B  
C  
D  
E  
F



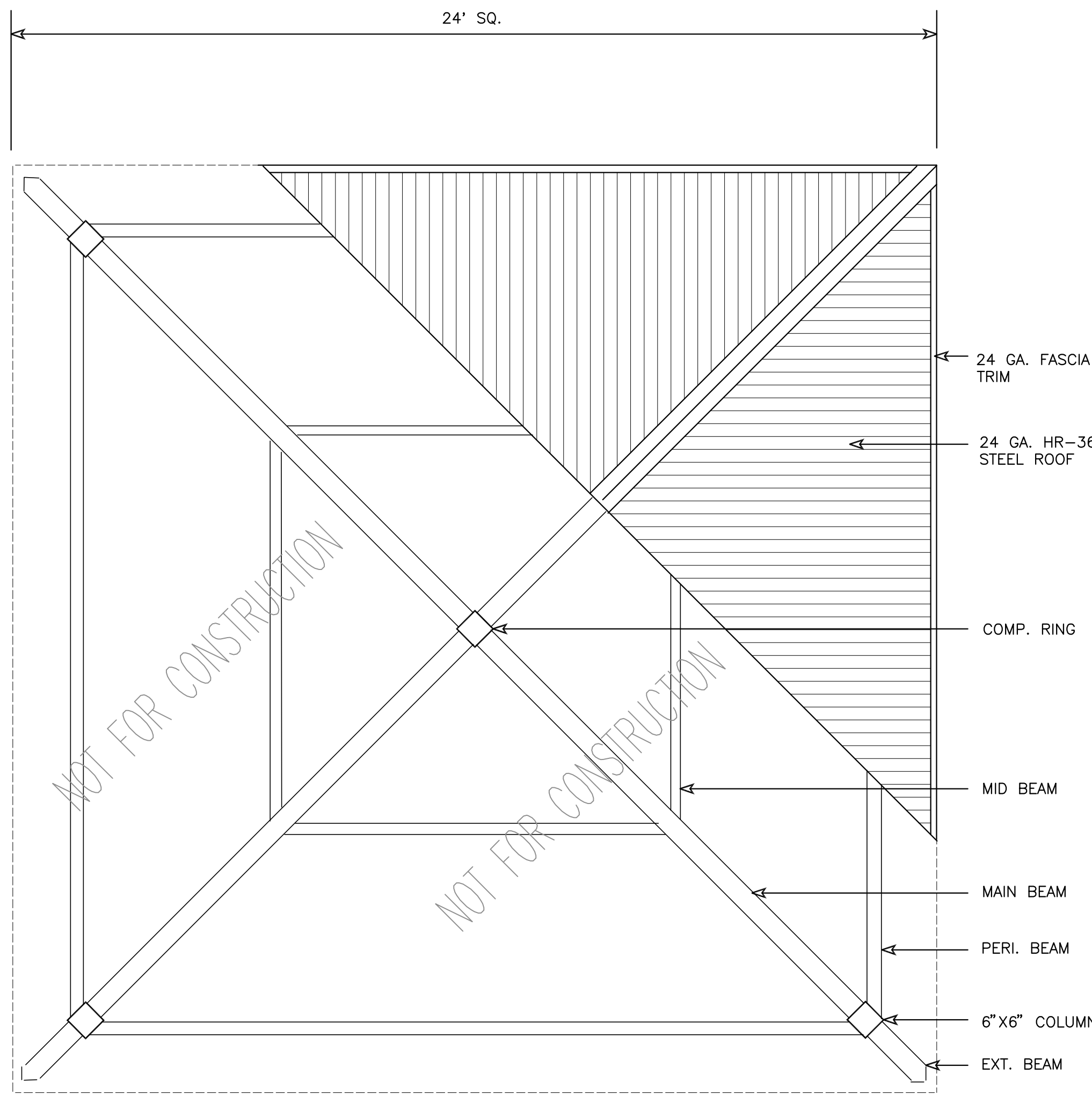
LAYOUT PLAN 24'X24' NAVAJO MODEL NTS



SPREAD FOOTING DETAIL 24' x 24' NAVAJO MODEL NTS

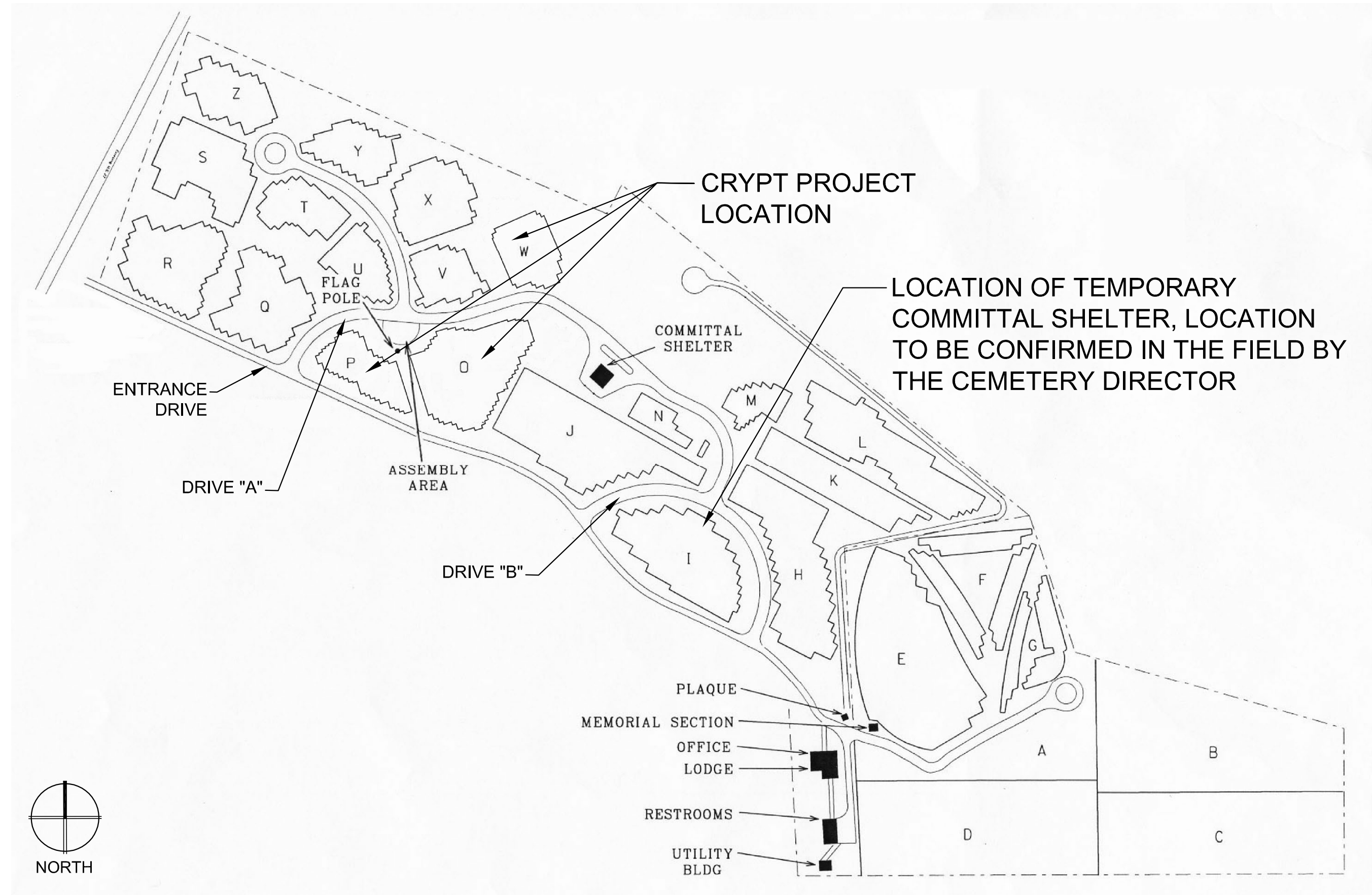


ELEVATION VIEW 24' X 24' NAVAJO MODEL NTS



PLAN VIEW 24' X 24' NAVAJO MODEL NTS

- NOTE:
- FOR BID REFERENCE ONLY. CONTRACTOR TO SUBMIT SHOP DRAWINGS FOR SHELTER AND FOUNDATION SEALED BY KENTUCKY PROFESSIONAL STRUCTURAL ENGINEER. ALSO PROVIDE CALCULATIONS.
  - COMMITTAL SHELTER PLANS ARE SHOWN HERE FOR CONTRACTORS' CONVENIENCE. COLOR AND FINISH AS APPROVED BY CEMETERY DIRECTOR. TO OBTAIN MANUFACTURER'S PLANS AND INSTALLATION SPECIFICATIONS CONTACT AMERICANA BUILDING PRODUCTS 1-888-442-2928 OR KIDZONE PLAY SYSTEMS 1-877-859-6437, JOHN HARDESTY.
  - TEMPORARY COMMITTAL SHELTER IS TO BE LEFT IN PLACE AT THE END OF CONSTRUCTION. IT WILL NOT BE REMOVED BY THIS CONTRACT

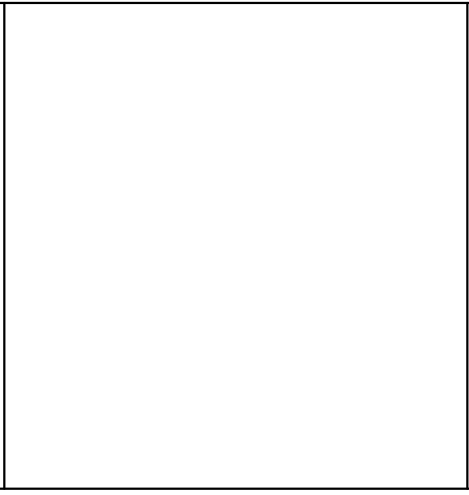
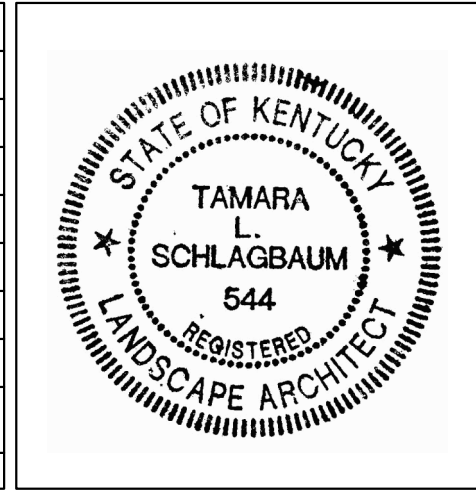


TEMPORARY COMMITTAL SHELTER LOCATION NTS

CONSTRUCTION DOCUMENTS

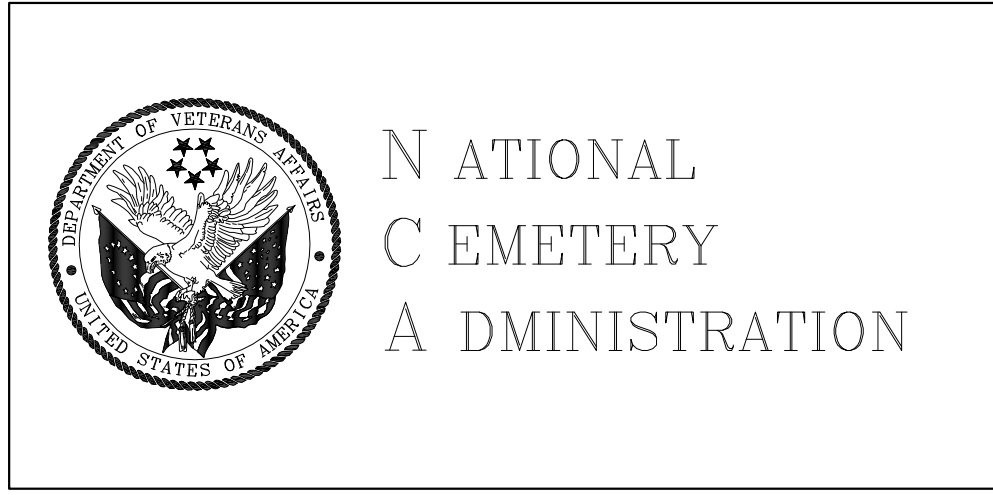
A  
B  
C  
D  
E  
F

|           |      |
|-----------|------|
| Revisions | Date |
|           |      |
|           |      |
|           |      |
|           |      |
|           |      |
|           |      |
|           |      |
|           |      |
|           |      |



**Carter Burgess**  
A Wholly Owned Subsidiary of Jacobs  
Consultants in Architecture, Engineering,  
Planning, and the Environment  
Sacramento Office  
180 Promenade Circle, Suite 300  
Sacramento, California 95834  
(916) 929-3323 Fax (916) 929-1772

| Subconsultant List          |                                                                       |
|-----------------------------|-----------------------------------------------------------------------|
| THE SIERRA WEST GROUP, LLC  | 2730 GATEWAY OAKS DRIVE, STE. 110 SACRAMENTO, CA 95833 (916) 925-4000 |
| G.J. BERDING SURVEYING, INC | 741 MAIN STREET, MILFORD, OH 45150 (513) 831-5505                     |
| ALT & WITZIG                | 6205 SCHUMACHER DRIVE, WEST CHESTER, OH 45069 (513) 777-9890          |
| LT ENGINEERING, LLC         | 5620 ZUNI STREET DENVER, CO 80227 (303) 477-3861                      |
|                             |                                                                       |
|                             |                                                                       |
|                             |                                                                       |
|                             |                                                                       |
|                             |                                                                       |



|                                                       |                                             |
|-------------------------------------------------------|---------------------------------------------|
| Drawing Title                                         | ARCHITECTURAL - TEMPORARY COMMITTAL SHELTER |
| Approved: Director, Office of Construction Management |                                             |
| Approved: Director, Project Management Service        |                                             |

|                 |                                                                  |
|-----------------|------------------------------------------------------------------|
| Project Title   | CAMP NELSON NATIONAL CEMETERY CONVERT TO 2,500 PRE-PLACED CRYPTS |
| Building Number |                                                                  |
| Location        | CAMP NELSON NATIONAL CEMETERY NICHOLASVILLE, KENTUCKY            |

|             |            |
|-------------|------------|
| Date:       | 11/02/2010 |
| Project No. | 833CM3024  |
| DRAWING NO. | L-405      |
| Dwg.        | 33 of 40   |