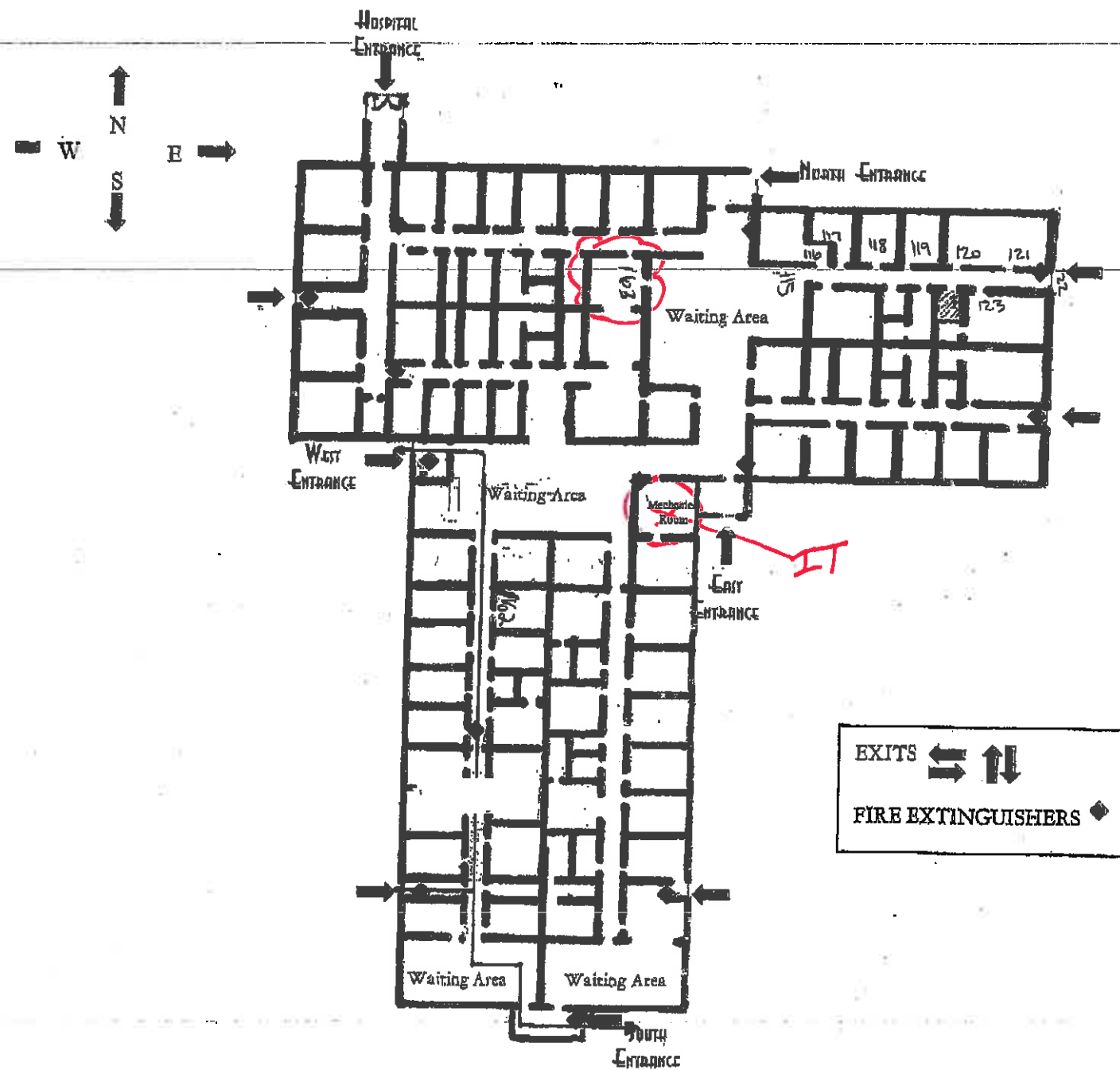
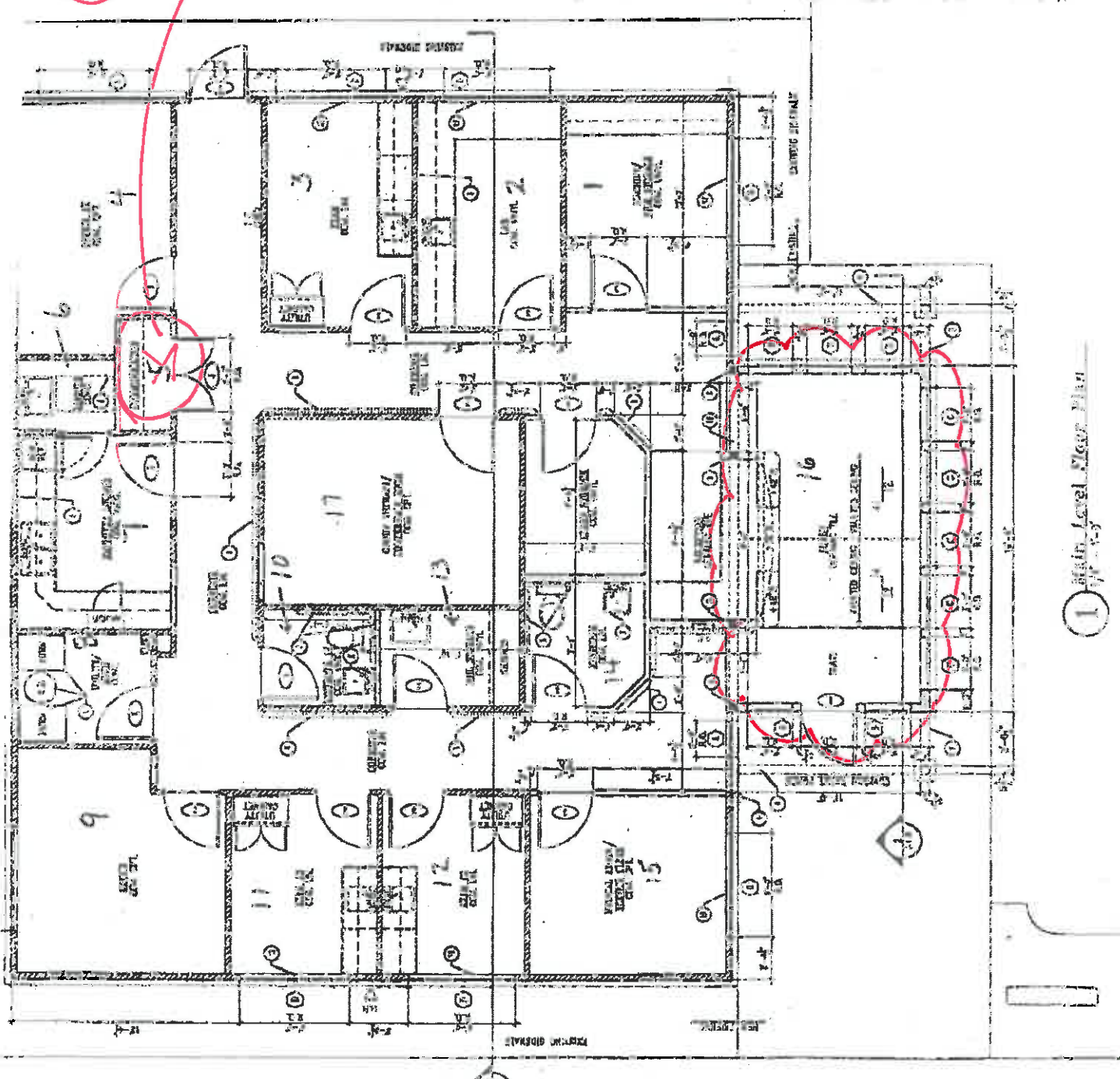


McCOLLUM, Bradley
Buchowski, Lauren
Hickes, Don

LAMAR
Powers Medical Group
MEDICAL OFFICE BUILDING

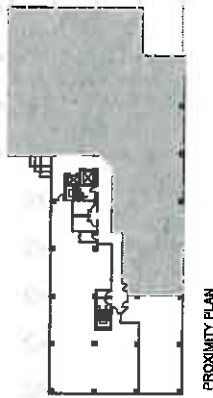
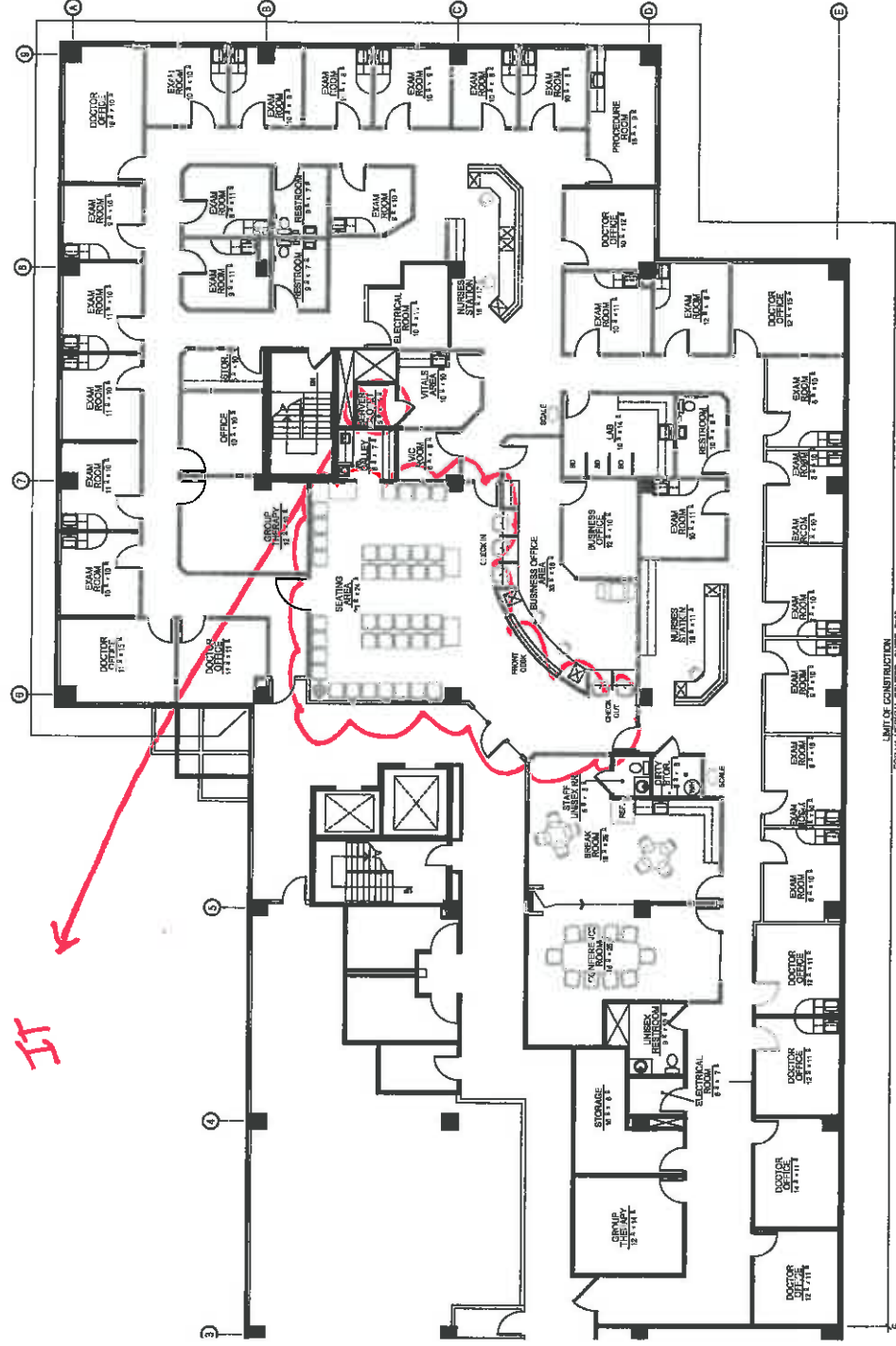




1 Main Level Floor Plan

Burlington
Floor Plan

IT



1 FINAL PRICING PLAN #1
SP1 LEVEL TWO (2)

AVIZORA

NOT TO SCALE

LIMIT OF CONSTRUCTION
FOR VA MEDICAL CENTER - SUITE #200

PROXIMITY PLAN

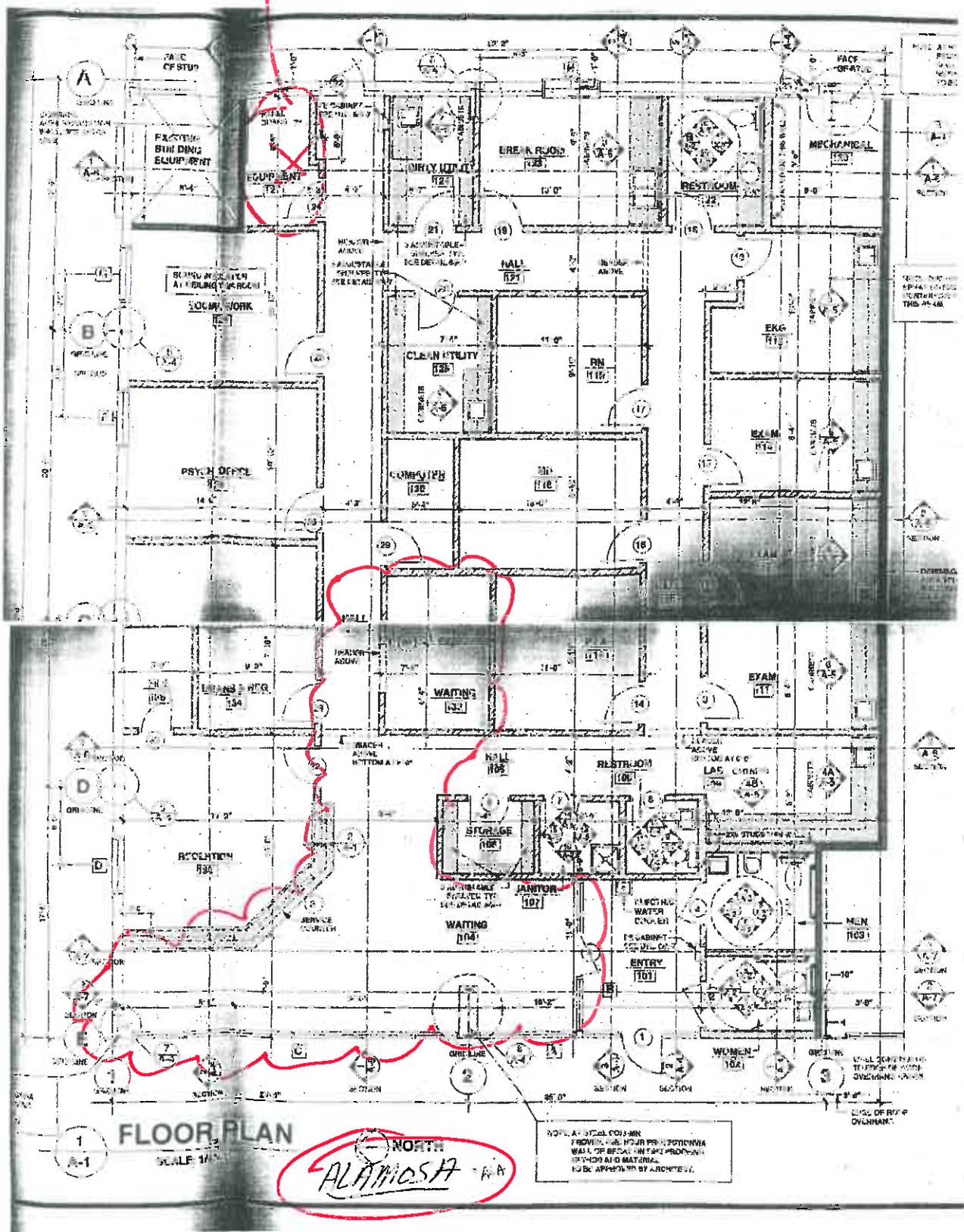
TPS
TENANT
PLANNING
SERVICES
INCORPORATED
1700 Broadway, Suite 408
Denver, Colorado 80290
(303) 861-4800
fax (303) 861-1621

VA MEDICAL CLINIC

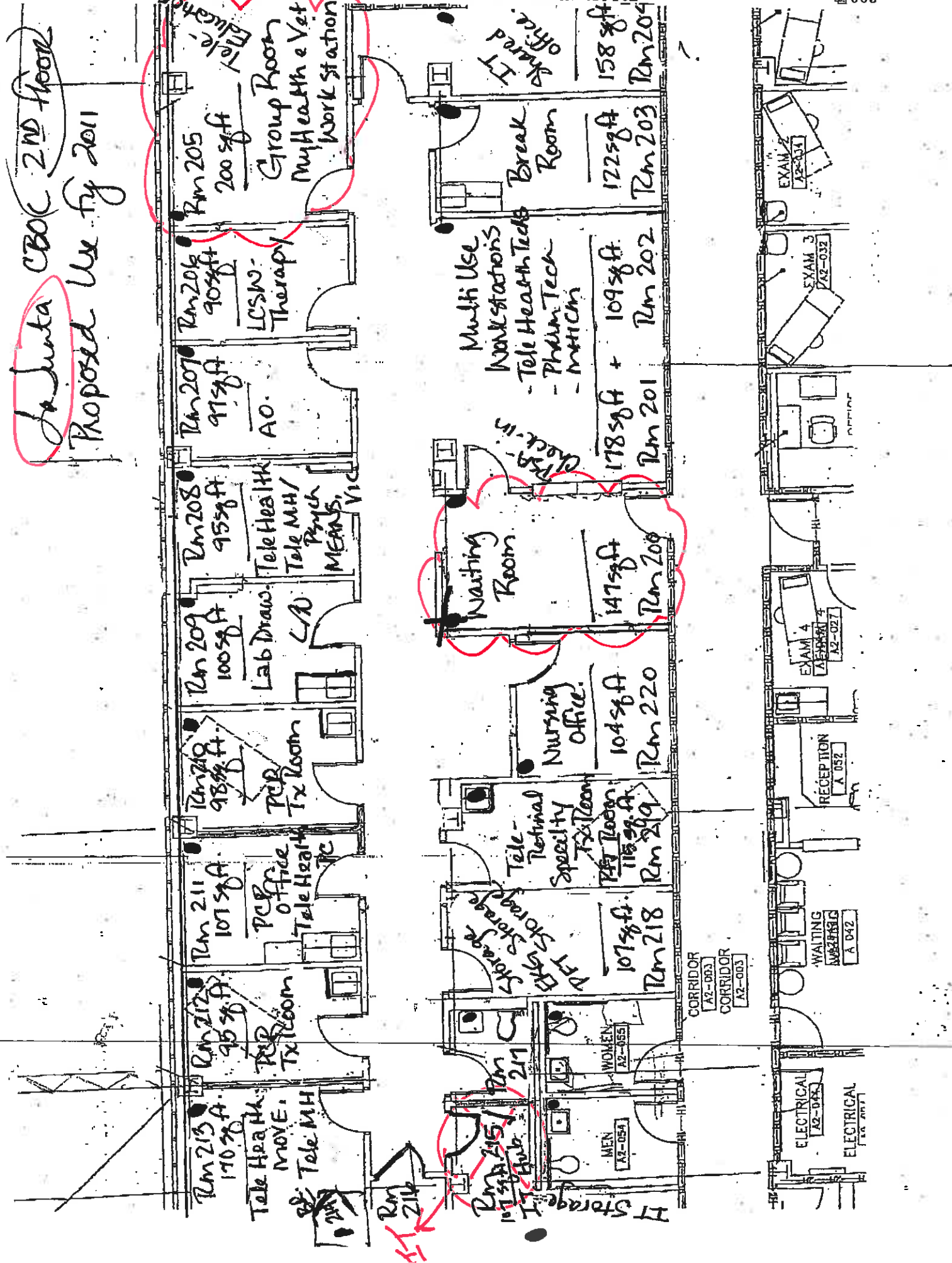
FINAL SPACE PLAN #1 REVISED
ISSUED: 1 OCTOBER 2007
DRAWN BY: MH/ PE/ JG
JOB NO.: 100749

BUILDING: GATEWAY MEDICAL CENTER
LEVEL TWO (2)
SHEET: 1 of 1

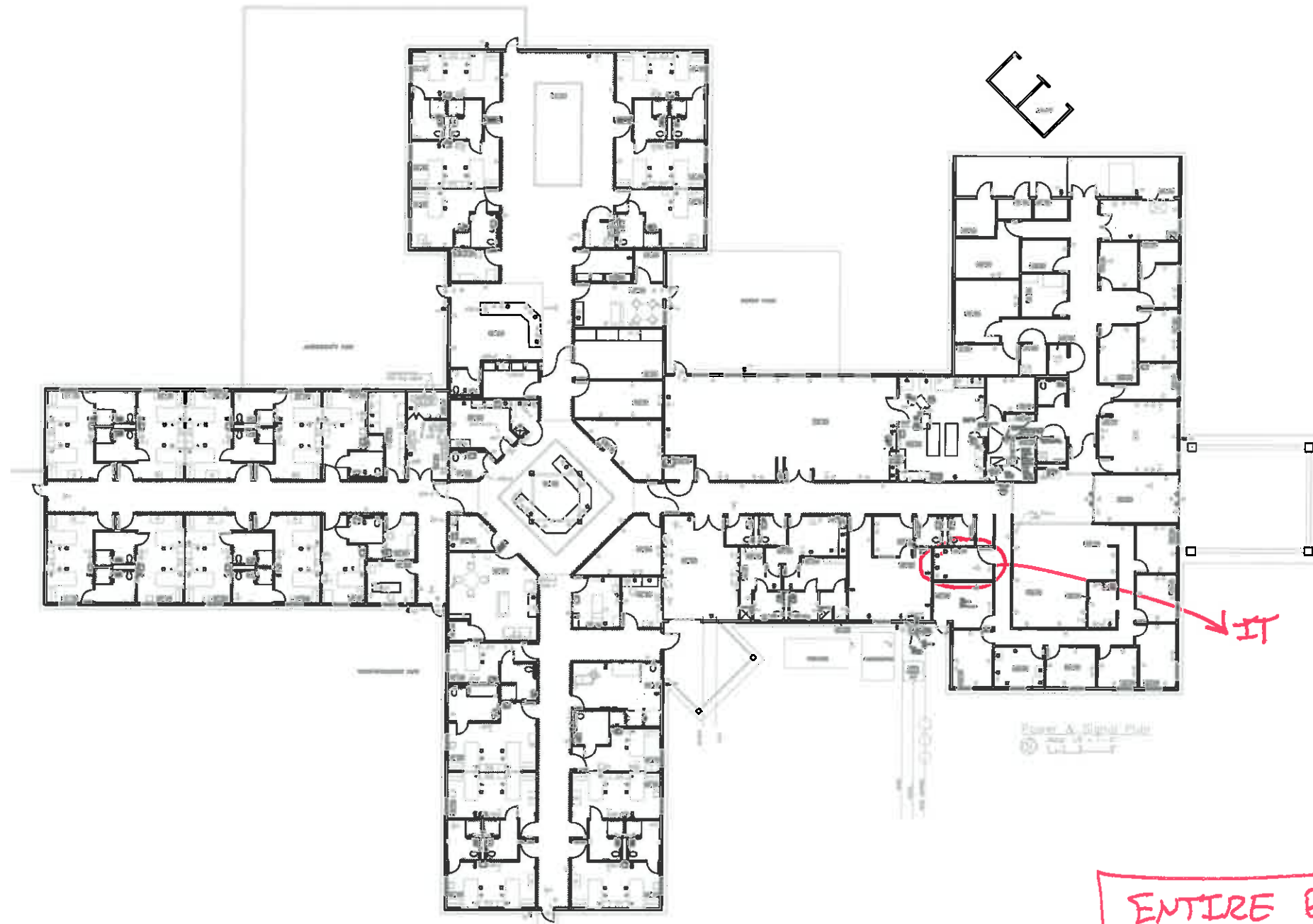
IT



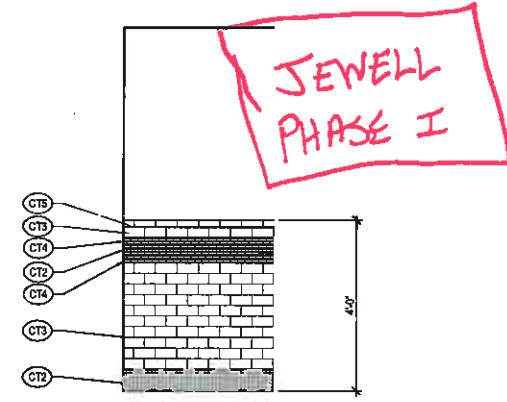
La Junta CBQC 2nd floor
Proposed Use FY 2011



PUEBLO CC



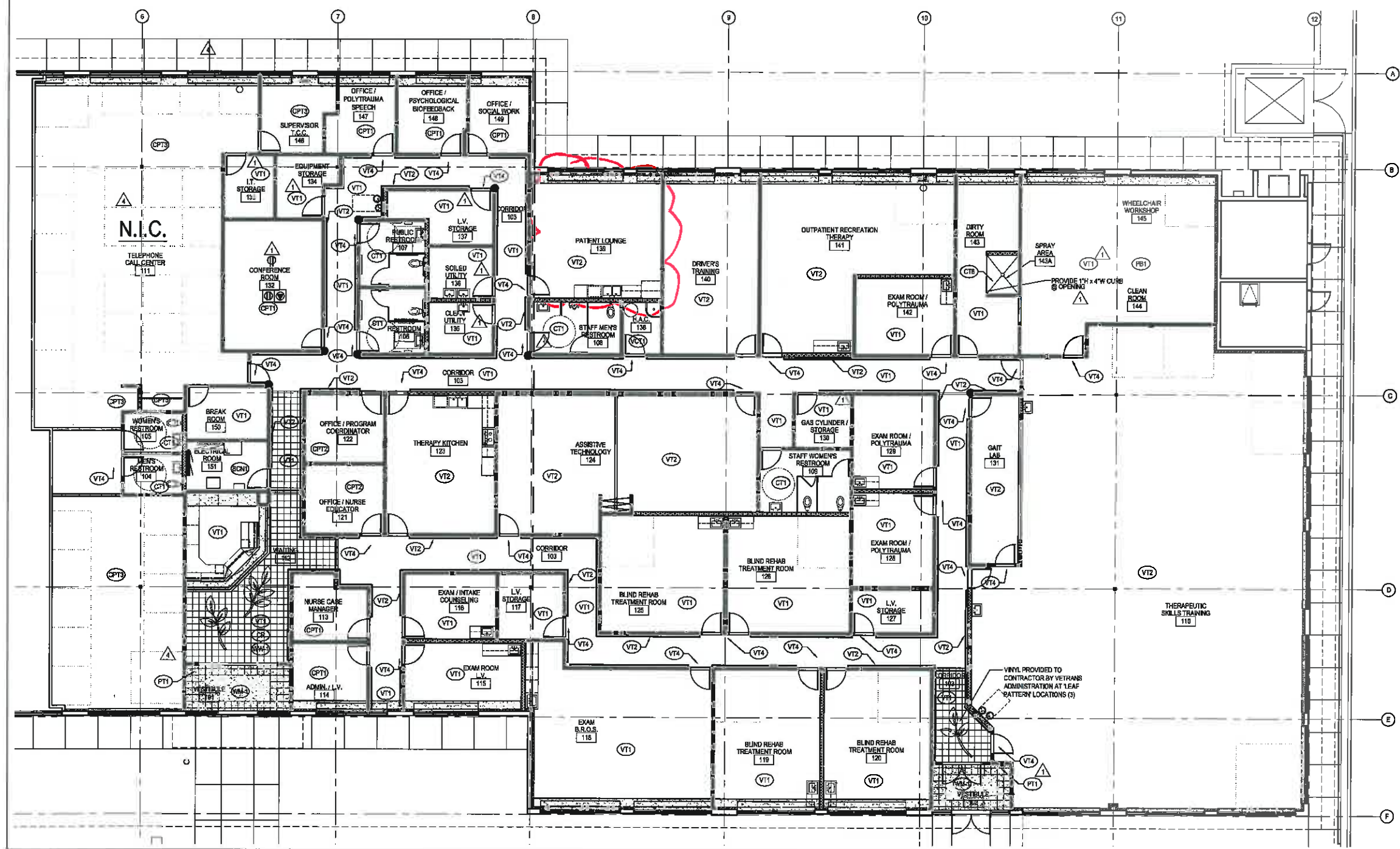
ENTIRE BUILDING



2 TYPICAL BATHROOM WALL TILE
1/2" = 1'-0"

TOILET AND EXAM ROOM ACCESSORIES		
TYPE	ROOMS	MODEL
TOILET PARTITIONS	# 106 - 109	ACCURATE; FLOOR MOUNTED POWDER COATED STEEL; COLOR - #880 WHITE
URINAL SCREEN - WALL HUNG	# 106	ACCURATE; WALL HUNG POWDER COATED STEEL; COLOR - #880 WHITE
TOILET PAPER DISPENSER	# 104 - 109	BOBRICK / B-4288 S.S. FINISH
PAPER TOWEL DISPENSER W/ WASTE RECEPTACLE	# 104 - 109	BOBRICK / B-4389 S.S. FINISH
SANITARY NAPKIN / TAMPON VENDOR	# 104 - 107, 109	BOBRICK / B-43500 S.S. FINISH
SEAT COVER DISPENSER	# 104 - 109	BOBRICK / B-4221 S.S. FINISH
PAPER TOWEL DISPENSER	# 110 (2), 115, 116, 118-120, 123, 125, 126, 128, 129, 135, 136, 138, 141-143	BOBRICK / B-4282 S.S. FINISH
SOAP DISPENSER	# 104-109, 123, 135, 136, 139	BOBRICK / B-4112 S.S. FINISH
SOAP DISPENSER - FOOT OPERATED	# 110 (2), 115, 116, 118-120, 125, 126, 128, 129, 141, 142	BRADLEY # 8543
MIRROR (TILT)	# 104 - 109	BOBRICK / B-293-1830 S.S. FINISH
COAT HOOK (WALL MOUNTED)	# 104-109, 115, 116, 118-120, 125, 126, 128, 129, 143-142	BOBRICK / B-670 BRIGHT POLISHED STEEL FINISH
STAINLESS STEEL SHELF	# 104 - 109	BOBRICK / B-286 S.S. FINISH
GRAB BAR	# 104 - 109	BOBRICK / B-8836 18", 36" OR 42" LONG / S.S. FINISH

FLOOR / WALL MATERIALS LEGEND	
FLOORING	BASE
Carpet: OPT1 Mannington - Modular Tile - "All About Me" - Aspen (ASPE) OPT2 Mannington - Modular Tile - "All About Me" - Ice Blue (ICBL)	Base: RB-1 Roppe - P113 Plateau - 4" RB-2 Roppe - P131 Breeze - 4" RB-3 Roppe - P189 LT Gray - 4" RB-4 Roppe - P178 Pewter - 4" Note: All rubber wall base to be 4" cove U.O.N.
Vinyl: VT-1 AMTICO - Onyx Beige # OMA - 12"x12" VT-2 AMTICO - Warm Beach Lead - 3"x6" VT-3 AMTICO - Lunar Copper # MT13 - Leaf Design VT-4 AMTICO - Ptery Quli # WT20 - 2"x38"	Parquet Tile: PT-1 Arizona Tile - PL Nockle Stone - 12"x12" SBN - Grout to Match WB-1 Arizona Tile - PL Nockle Stone - 3"x12" RBN - Grout to Match
Vinyl Composition (Alternate)	WALLS
Wall: WAL-1 Walk Off Flooring Mat - C.S. Group Pedestal Lp. - Tapered Angle Frame, 1/2" Deep Metal Tuff HD carpet #7304 Sandstone; Rail & Frame Finish: ML, Non-PVC Hinge	Wallpaper: WW-1 Acrolyn - Plaidtype - Parchment #253
CT-1 Daltile - 2" Hanger - Cypress #D452 CT-2 Daltile - 2" Hanger - Cypress #D452 CT-3 American Clean - 2"x2" Unglazed - #A-20 Beach Tan CT-4 American Clean - 2"x2" Unglazed Conventional Motor Bed - #A-20 Beach Tan	Granite Tile: GT-2 Daltile - 12"x12" Square - Cypress #D452 - Flush Cove / C-833 GT-3 Daltile - 6"x6" - Arto White #0150 GT-4 Daltile - 2"x1" - Arto White (Bronze) - Arto White D817 GT-5 Daltile - 2"x1" - Arto White #0150 / S-4236 GT-6 American Clean - 2"x2" Unglazed - #A-20 Sand
Grout: TBD	Special Fabric: PB-1 Poly Board CR Chair rail



LEGEND:
● INDICATES PROTECTIVE CORNERS
— HANDRAIL (SEE SHEET A-002 FOR SPECIFICATION)
INSTALL 4" FROM EDGE OF DOOR FRAME OR WALL OR OUTSIDE CORNER & 6" FROM INSIDE CORNER LOCATIONS

Copyright
These plans are an instrument of service and are the property of the Architect, and may not be duplicated, disclosed, or reproduced without the written consent of the Architect. Copyrights and Infringements will be enforced and prosecuted.

VETERANS ADMINISTRATION / LOW VISION CLINIC
225 OFFICE PARK BUILDING 4
14400 EAST JEWELL AVE.
AURORA, COLORADO
FOURTH MEDICI COMPANY
DENVER, COLORADO

Date - 4/30/2008
Proj No - 08009.00
Drawn - PSM
Checked - RV

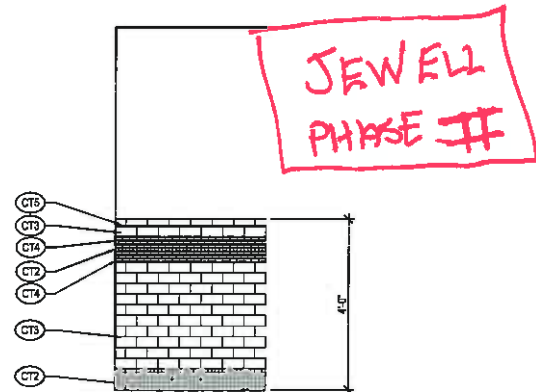
Date Issue
2008-06-23 - FOR CONSTRUCTION
2008-07-03 - ADDENDUM #1
2008-07-08 - ADDENDUM #2
2008-09-23 - ADDENDUM #3
2008-10-08 - RECORD SET

RECORD DOCUMENTS:
THESE RECORD DOCUMENTS HAVE BEEN PREPARED USING INFORMATION PROVIDED BY THE CONTRACTOR. THESE DOCUMENTS INDICATE THE ACTUAL FIELD CONDITIONS AS REPORTED BY OTHERS.

Title - FLOOR FINISH PLAN

1 FINISH PLAN
1/8" = 1'-0"

A-221



2 TYPICAL BATHROOM WALL TILE
1/2" = 1'-0"

TOILET AND EXAM ROOM ACCESSORIES		
TYPE	ROOMS	MODEL
TOILET PAPER DISPENSER	# 209, 210, 221, 222, 228, 227	BOBRICK / B-4288 S.S. FINISH
PAPER TOWEL DISPENSER W/ WASTE RECEPTACLE	# 209, 210, 221, 222, 228, 227	BOBRICK / B-4369 S.S. FINISH
SANITARY NAPKIN / TAMPON VENDOR	# 209, 224, 228	BOBRICK / B-4350 S.S. FINISH
SEAT COVER DISPENSER	# 209, 210, 221, 222, 228, 227	BOBRICK / B-4221 S.S. FINISH
PAPER TOWEL DISPENSER	# 209, 210, 221, 222, 227, 228	BOBRICK / B-4282 S.S. FINISH
SOAP DISPENSER	# 209, 210, 221, 222, 227, 228	BOBRICK / B-4112 S.S. FINISH
MIRROR (TILT)	# 209, 210, 221, 222, 227, 228	BOBRICK / B-283-1830 S.S. FINISH
COAT HOOK (WALL MOUNTED)	# 209, 210, 221, 222, 227, 228	BOBRICK / B-870 BRIGHT POLISHED STEEL FINISH
STAINLESS STEEL SHELF	# 209, 210, 221, 222, 227, 228	BOBRICK / B-285 S.S. FINISH
GRAB BAR	# 209, 210, 221, 222, 227, 228	BOBRICK / B-8906 18", 36", OR - 42" LONG / S.S. FINISH

FLOOR / WALL MATERIALS LEGEND

FLOORING

Carpet

CPT1 Mannington - Modular Tile - "All About Me" - Aspen (ASPE)
CPT2 Mannington - Modular Tile - "All About Me" - Ice Blue (ICBL)
CPT3 Miliken - Modular Tile - "Raffia Tex" - #457 Summer Afternoon

Tile

VT-1 AMTICO - Onyx Beige # DMK - 12"x12"
VT-2 AMTICO - Warm Beige Leaf - 3"x6"
VT-3 AMTICO - Lunar Copper # MT133 - Leaf Design
VT-4 AMTICO - Primary Oak # W720 - 3"x6"

Mill

WN-1 Wink Off Flooring, Mill - CIS Group, Parfined Lp., Tapered Angle Crown,
1/2" deep Mono / Jut HD carpet #7304 Sandstone, Rail & Fridge Finish
Mill, Non-PVC Hinge

CT-1

CT-1 Daltile - 2" Hexagon - Cypress #D452
CT-2 Daltile - 2"x6" - Arctic White #A180 / S-4286
CT-3 American Clean - 2"x2" Unglazed - BA-20 Beach Tan
CT-4 American Clean - 2"x2" Unglazed - BA-27 Sand

Grout

TBD

BASE

Subfloor

RE-1 Roppe - P113 Plaid - 4"
RE-2 Roppe - P131 Blaque - 4"
RE-3 Roppe - P156 L Gray - 4"
RE-4 Roppe - P178 Pewter - 4"

Parquet Tile

PT-1 Arizona Tile - PL Nordic Semtex - 12"x12" SBN - Grout to Match
PT-2 Arizona Tile - PL Nordic Semtex - 12"x12" SBN - Grout to Match

WALLS

Wallpaper

WN-1 Acuvyn - Plaid - Parchment #283

Ceramic Tile

CT-2 Daltile - 1"x1" Square - Cypress #D452 - Flush Cove / C-633
CT-3 Daltile - 3"x3" - Arctic White #A180
CT-4 Daltile - 2"x1" - Cobble (Blackwork) - Arctic White D617
CT-5 Daltile - 2"x6" - Arctic White #A180 / S-4286
CT-6 American Clean - 2"x2" Unglazed - BA-27 Sand

CONCRETE FLOORING

SC Sealed Concrete

LEGEND:

- INDICATES PROTECTIVE CORNERS - #880 Sage Green / UNLESS OTHERWISE NOTED ON PLAN
- HANDRAIL (SEE SHEET A-002 FOR SPECIFICATION) INSTALL 4" FROM EDGE OF DOOR FRAME OR WALL, OR OUTSIDE CORNER & 6" FROM INSIDE CORNER LOCATIONS
- INDICATES PROTECTIVE CORNERS - #253 Parchment / UNLESS OTHERWISE NOTED ON PLAN

SEM

677 S Colorado Blvd
Suite 200
Denver CO 80246

303 220 8900
303 220 0708 Fax

www.SEMarchitects.com

Copyright

These plans are an instrument of service and are the property of the Architect, and may not be duplicated, disclosed, or reproduced without the written consent of the Architect. Copyrights and Infringements will be enforced and prosecuted.

VETERANS ADMINISTRATION PROSTHETICS LAB / TELEPHONE CALL CENTER

225 OFFICE PARK BUILDING 4
14400 EAST JEWELL AVE.
AURORA, COLORADO

FOURTH MEDICI COMPANY
DENVER, COLORADO

Date - 10/27/2008

Proj No - 08009.02

Drawn - PSM / TAZ

Checked - RV

Date Issue

2008-10-27 - FOR CONSTRUCTION

2009-01-08 - REVISION #2

2009-10-09 - RECORD SET

RECORD DOCUMENTS:
THESE RECORD
DOCUMENTS HAVE BEEN
PREPARED USING
INFORMATION PROVIDED BY
THE CONTRACTOR. THESE
DOCUMENTS INDICATE THE
ACTUAL FIELD CONDITIONS
AS REPORTED BY OTHERS.

Title - FLOOR FINISH PLAN

1 FINISH PLAN
1/8" = 1'-0"



A-221