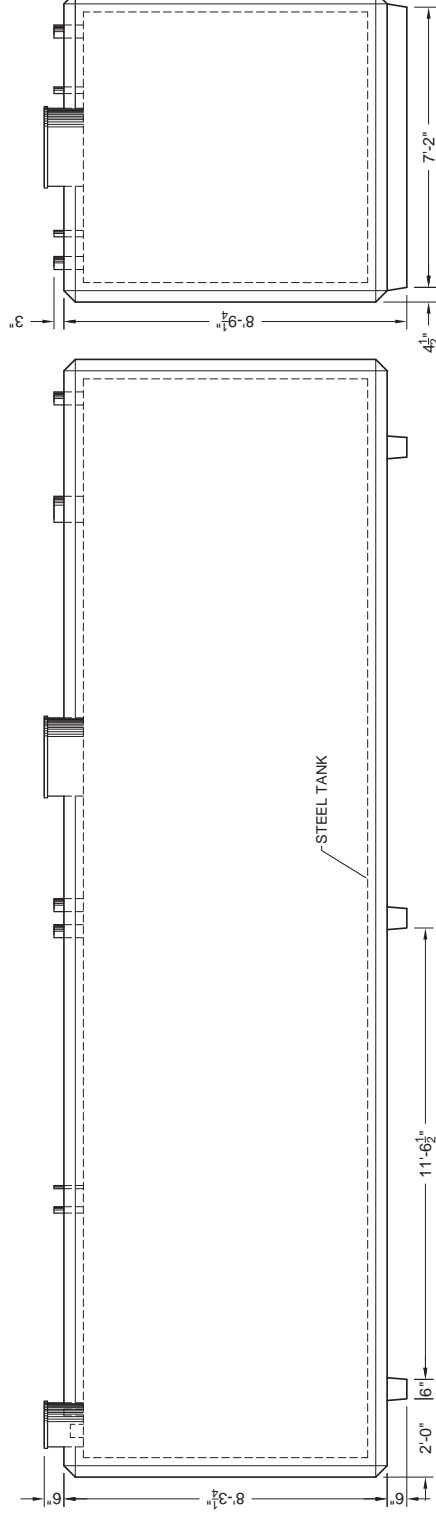


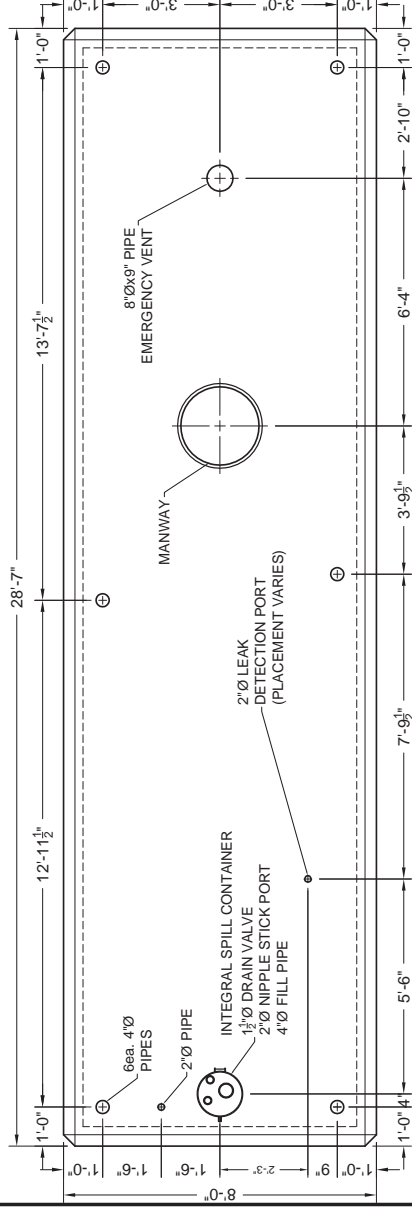
# NOTES:

1. STEEL TANK SHALL BE U.L. 142 LISTED FOR ABOVE GROUND STORAGE OF FLAMMABLE LIQUIDS.
2. STEEL TANK SKIN SHALL BE 3/16" THICK A.S.T.M. A-36 STEEL PLATE.
3. ALL EXPOSED METAL WITH THE EXCEPTION OF STAINLESS STEEL MUST BE POWDER COATED TO INHIBIT CORROSION.
4. STEEL TANKS SHALL BE RECTANGULAR IN SHAPE AND HAVE CONTINUOUS WELDS ON THE OUTSIDE.
5. STEEL TANK AND SECONDARY CONTAINMENT SHALL BE ENCASED IN SIX INCHES OF 4000 P.S.I. REINFORCED CONCRETE.
6. STEEL TANK SHALL BE PRESSURE TESTED AT 5 P.S.I.G. FOR 24 HOURS WITHOUT PRESSURE DROP.
7. TANK WALL SYSTEM SHALL BE LISTED IN ACCORDANCE WITH U.L. STANDARD 2085 AND SHOWN TO HAVE A TWO HOUR FIRE RATING
8. VAULTS SHALL HAVE THE CAPABILITY OF PHYSICAL MONITORING BETWEEN THE PRIMARY AND THE SECONDARY CONTAINMENT.
9. THE SECONDARY CONTAINMENT SHALL CONSIST OF A 30 ML HIGH DENSITY POLYETHYLENE GEO LINEAR.
10. THE VAULT SHALL BE OF A MONOLITHIC (SEAMLESS AND CONTINUOUS) CONCRETE POUR AND CONTAIN NO COLD JOINTS OR HEAT SINKS (HEAT TRANSFER POINTS) ON THE BOTTOM OR SIDES.
11. VAULT SHALL HAVE COATED CONCRETE EXTERIOR TO RESIST WEATHER AND REFLECT SUNLIGHT.

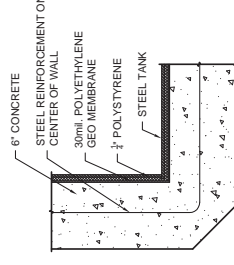


TYPICAL SIDE VIEW

TYPICAL END VIEW



TYPICAL PLAN VIEW



WALL DETAIL



2085 Listed  
"Protected" Type



1-888-965-3227

THIS DOCUMENT IS THE PROPERTY OF OLDCASTLE PRECAST, INC. IT IS LOANED TO THE USER OF THIS DOCUMENT AND IS NOT TO BE REPRODUCED OR TRANSMITTED IN ANY FORM OR BY ANY MEANS, ELECTRONIC OR MECHANICAL, WITHOUT THE WRITTEN PERMISSION OF OLDCASTLE PRECAST, INC.

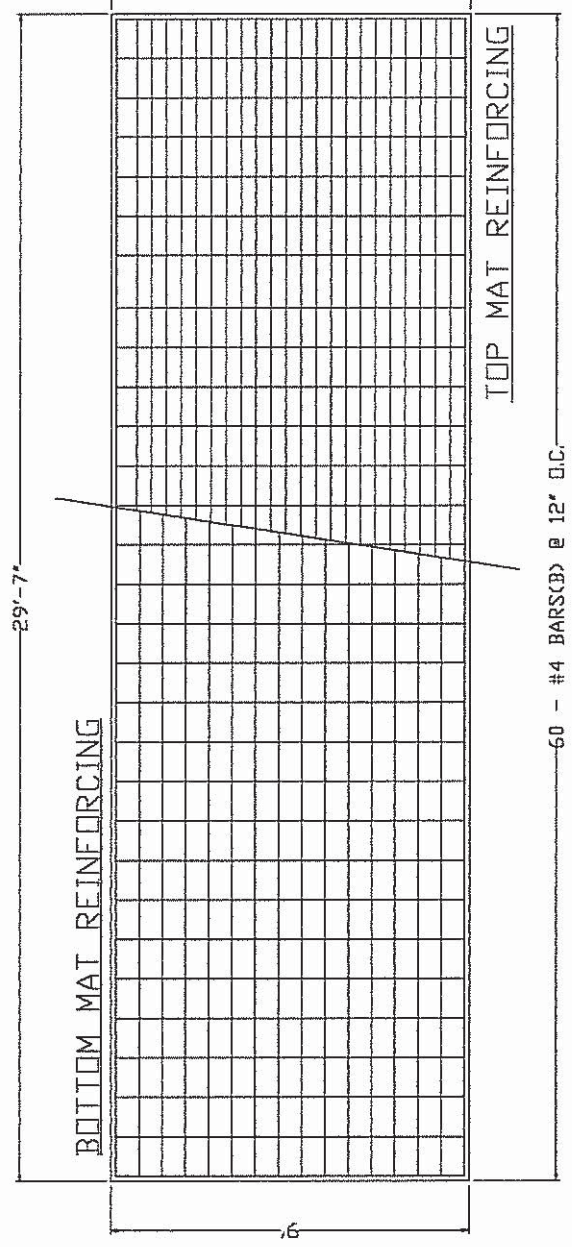
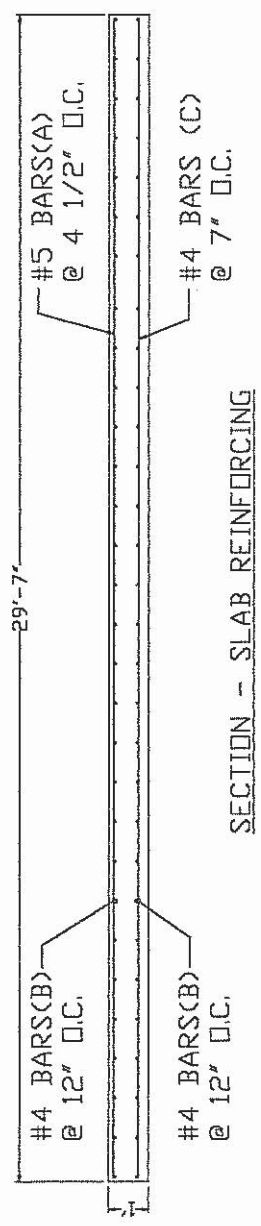
CONVAULT STORAGE TANK

10000 GALLON

CUSTOMER					SALES ORDER		SALES ORDER	
DATE	SALES	DESIGNER	CHECKED	REVISION	SHEET	OF		
10/21/13								
DRAWING NUMBER					SALES Drawings			



NOTE: SEE SLAB SPECIFICATIONS AND FOUNDATION REQUIREMENTS SHEET FOR QUESTIONS.



BAR SIZE	DIMENSION	NUMBER	WEIGHT LBS.
A #5	352	24	734.27
B #4	105	60	350.70
C #4	362	15	293.92



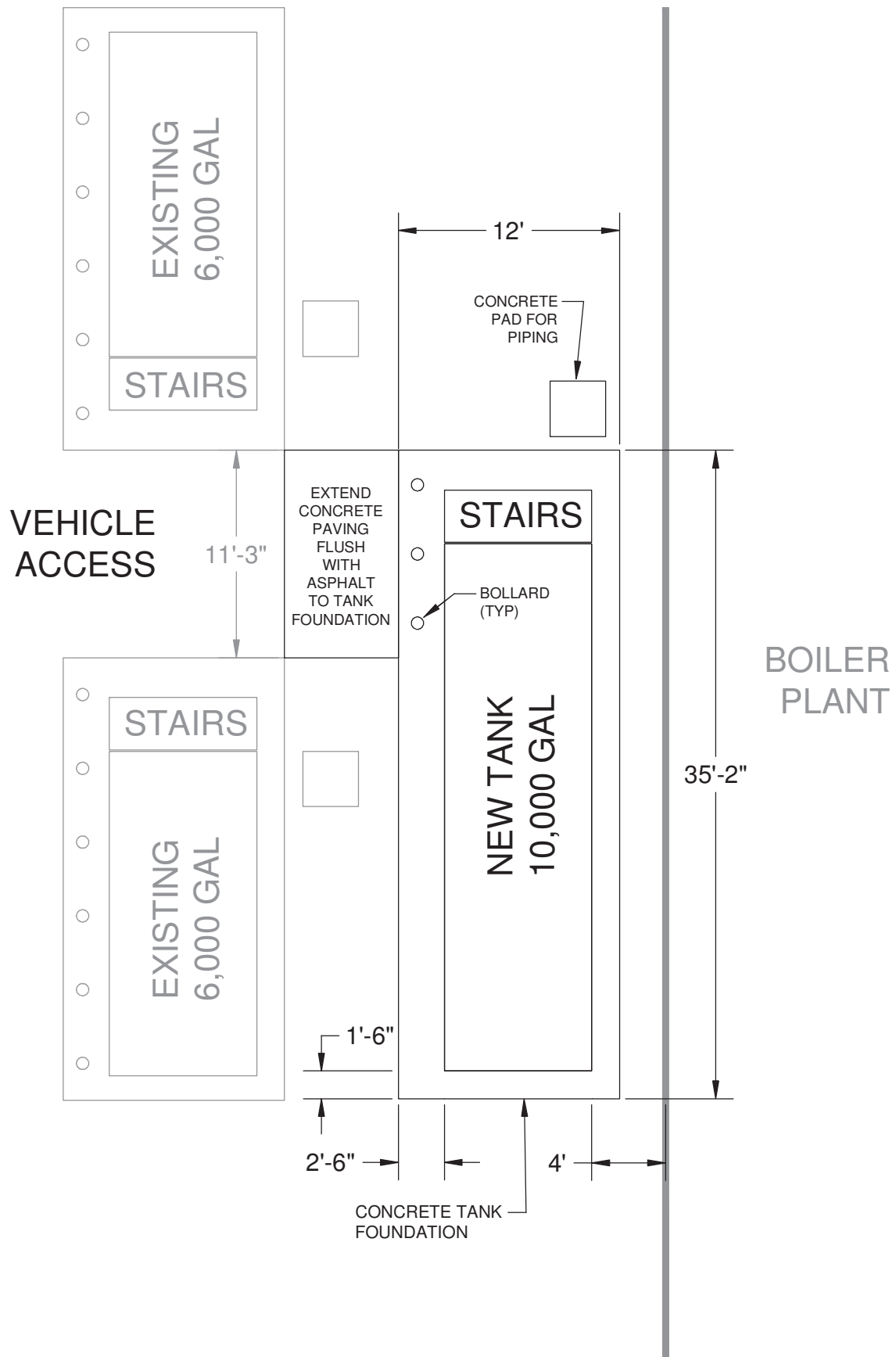
FLORIDA INC.  
1410 INDUSTRIAL DRIVE  
WILMINGTON, FL 34705

REV.	DATE	DESCRIPTION
1	02/10/99	GENERAL REVISIONS
2		
3		

CAST IN PLACE SLAB FOR A 10,000  
OR 5,000/5,000 HIGH PROFILE  
RECTANGULAR CONVAULT STORAGE TANK

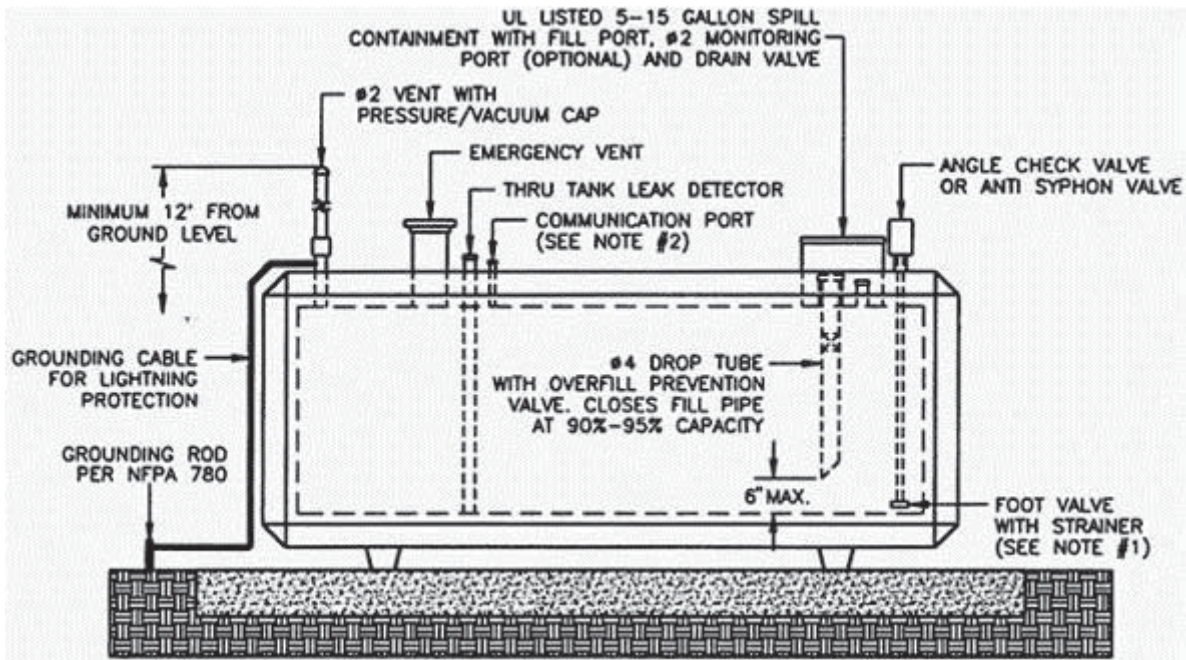
THIS DRAWING AND THE DATA THEREON ARE THE PROPERTY OF CONVAULT INC. AND ARE NOT TO BE REPRODUCED OR TRANSMITTED IN ANY FORM OR BY ANY MEANS, WITHOUT THE WRITTEN PERMISSION OF CONVAULT INC.

# TANK & FOUNDATION LAYOUT



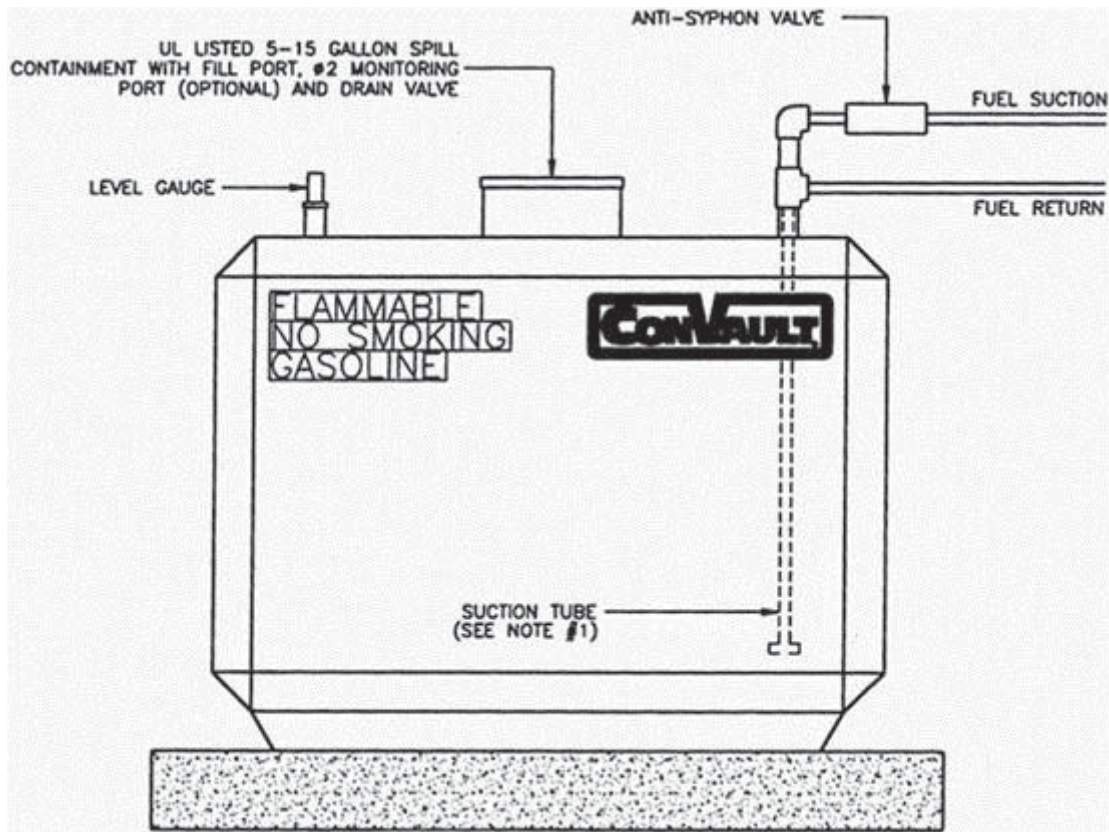


# Tank Installation Details



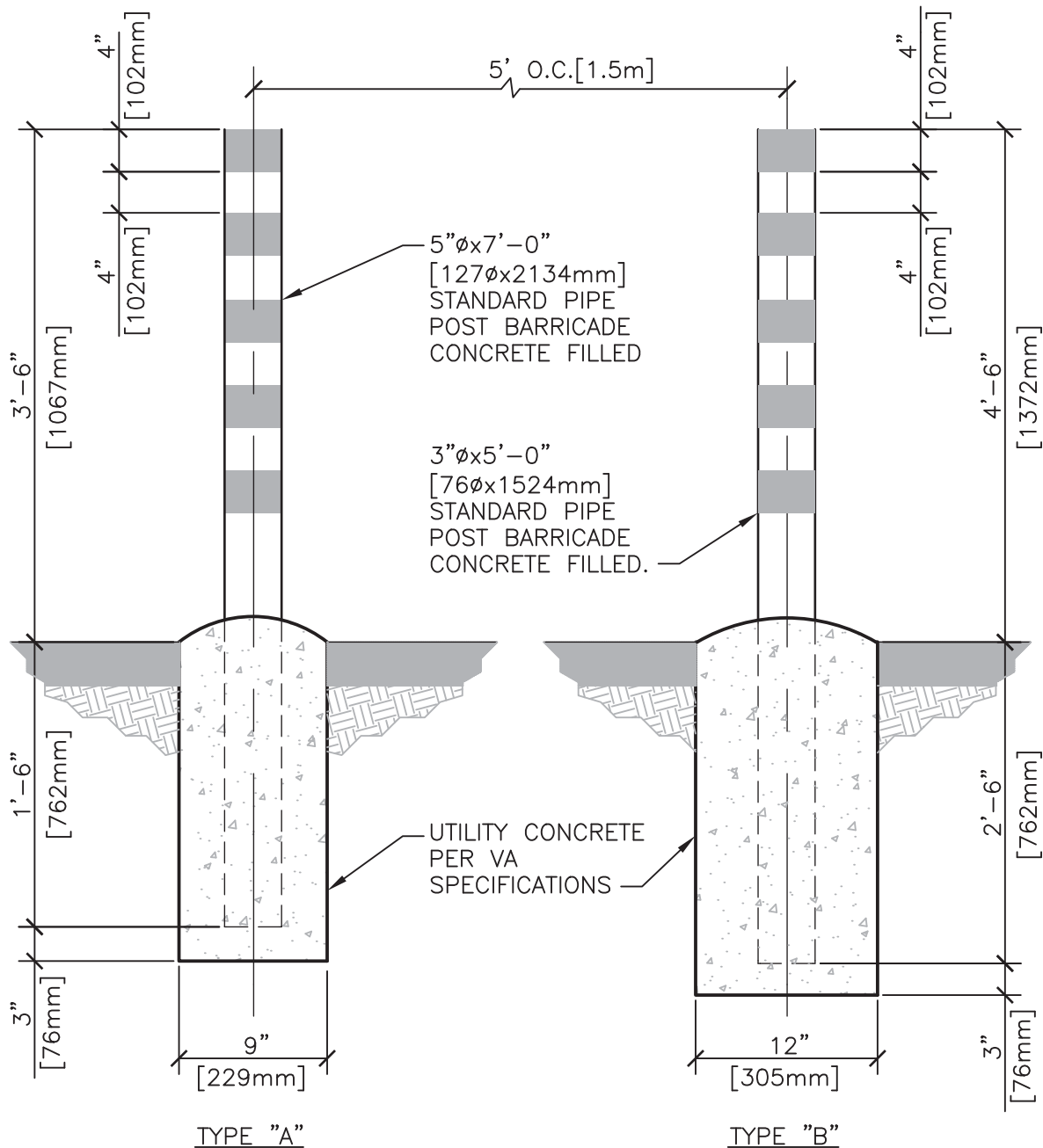
## Notes:

1. BOTTOM OF FOOT VALVE/STRAINER TO BE 1" FROM BOTTOM OF STEEL TANK.
2. COMMUNICATION PORT NOT NEEDED FOR DOUBLE WALL STEEL TANKS.
3. STAIRWAY ASSEMBLY TO FILL PORT.



## Notes:

1. BOTTOM OF FOOT VALVE/STRAINER TO BE 1" FROM BOTTOM OF STEEL TANK.
2. STAIRWAY ASSEMBLY TO FILL PORT.



**NOTES:**

- POST BARRICADES SHALL BE PAINTED WITH ONE PRIME COAT OF RED OXIDE (PAINT NO.1). ONE FINISH COAT OF DULL BLACK ENAMEL PER VA SPECIFICATIONS AND STRIPES CONSISTING OF 4" [102mm] BANDS OF YELLOW REFLECTORIZED TAPE SHALL BE USED UNLESS OTHERWISE SPECIFIED ON THE PLANS.
- FINISH COLOR COMBINATIONS, OTHER THAN THAT SPECIFIED ABOVE, SHALL BE SUBMITTED TO THE AGENCY FOR APPROVAL.



## CONCRETE POST BARRICADES

NTS



Department of  
Veterans Affairs

DETAIL TITLE / CONCRETE POST BARRICADES

SCALE :NONE

DATE ISSUED: DECEMBER 2008

CAD DETAIL NO.: SD320523-04.DWG