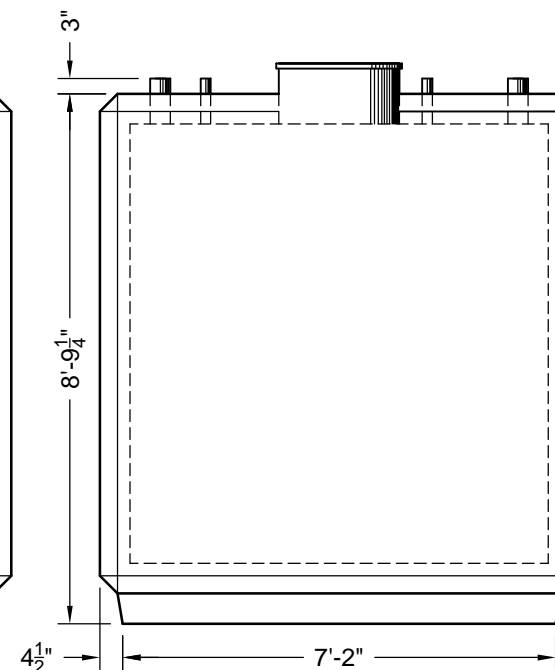
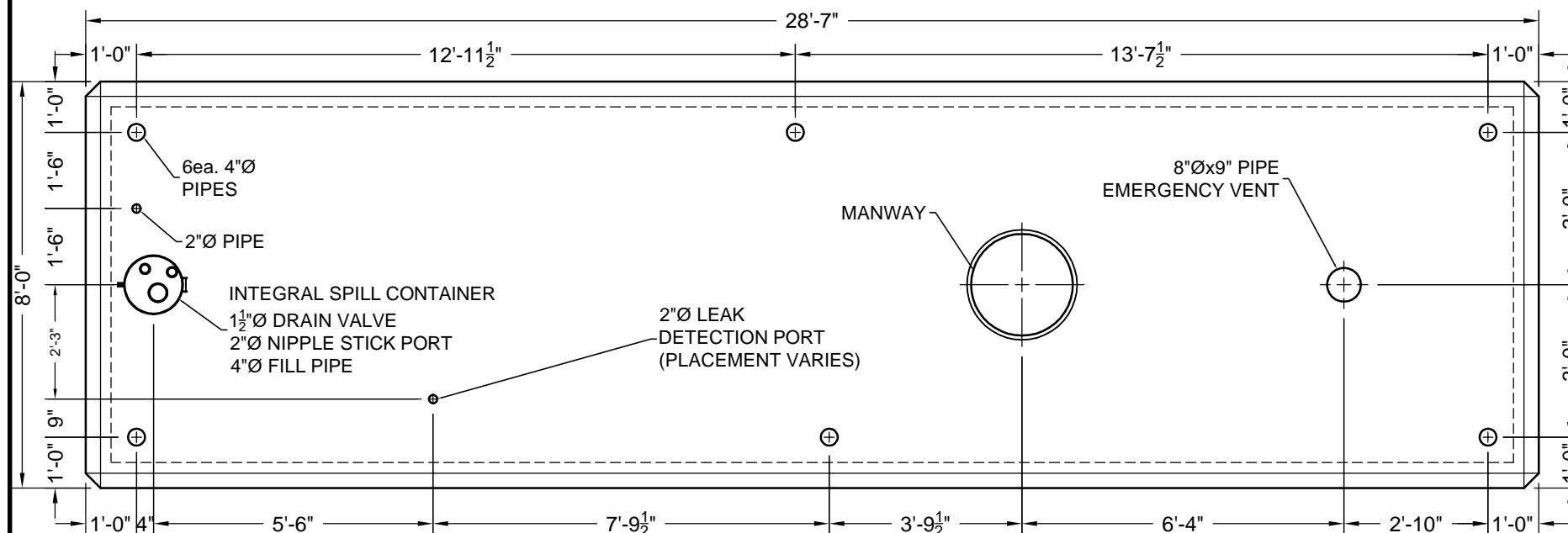


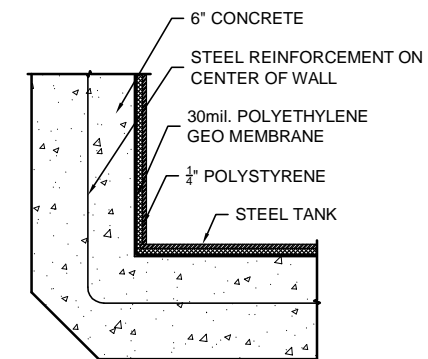
TYPICAL SIDE VIEW



TYPICAL END VIEW



TYPICAL PLAN VIEW



WALL DETAIL

NOTES:

1. STEEL TANK SHALL BE U.L. 142 LISTED FOR ABOVE GROUND STORAGE OF FLAMMABLE LIQUIDS.
2. STEEL TANK SKIN SHALL BE 3/16" THICK A.S.T.M. A-36 STEEL PLATE.
3. ALL EXPOSED METAL WITH THE EXCEPTION OF STAINLESS STEEL MUST BE POWDER COATED TO INHIBIT CORROSION.
4. STEEL TANKS SHALL BE RECTANGULAR IN SHAPE AND HAVE CONTINUOUS WELDS ON THE OUTSIDE.
5. STEEL TANK AND SECONDARY CONTAINMENT SHALL BE ENCASED IN SIX INCHES OF 4000 P.S.I. REINFORCED CONCRETE.
6. STEEL TANK SHALL BE PRESSURE TESTED AT 5 P.S.I.G. FOR 24 HOURS WITHOUT PRESSURE DROP.
7. TANK WALL SYSTEM SHALL BE LISTED IN ACCORDANCE WITH U.L. STANDARD 2085 AND SHOWN TO HAVE A TWO HOUR FIRE RATING
8. VAULTS SHALL HAVE THE CAPABILITY OF PHYSICAL MONITORING BETWEEN THE PRIMARY AND THE SECONDARY CONTAINMENT.
9. THE SECONDARY CONTAINMENT SHALL CONSIST OF A 30 ML HIGH DENSITY POLYETHYLENE GEO LINEAR.
10. THE VAULT SHALL BE OF A MONOLITHIC (SEAMLESS AND CONTINUOUS) CONCRETE POUR AND CONTAIN NO COLD JOINTS OR HEAT SINKS (HEAT TRANSFER POINTS) ON THE BOTTOM OR SIDES.
11. VAULT SHALL HAVE COATED CONCRETE EXTERIOR TO RESIST WEATHER AND REFLECT SUNLIGHT.



2085 Listed
"Protected" Type



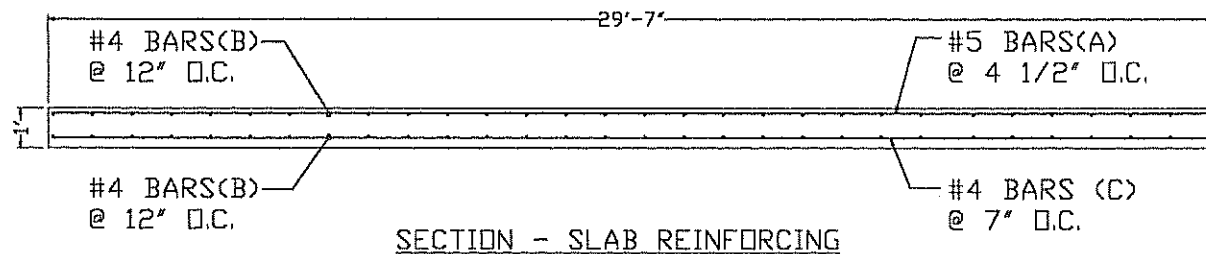
THIS DOCUMENT IS THE PROPERTY OF OLDCASTLE PRECAST, INC. IT IS CONFIDENTIAL, SUBMITTED FOR REFERENCE PURPOSES ONLY, AND SHALL NOT BE USED IN ANY WAY INJURIOUS TO THE INTERESTS OF, OR WITHOUT THE WRITTEN PERMISSION OF OLDCASTLE PRECAST, INC. COPYRIGHT ©2013 OLDCASTLE PRECAST, INC. ALL RIGHTS RESERVED

CONVAULT STORAGE TANK
10000 GALLON

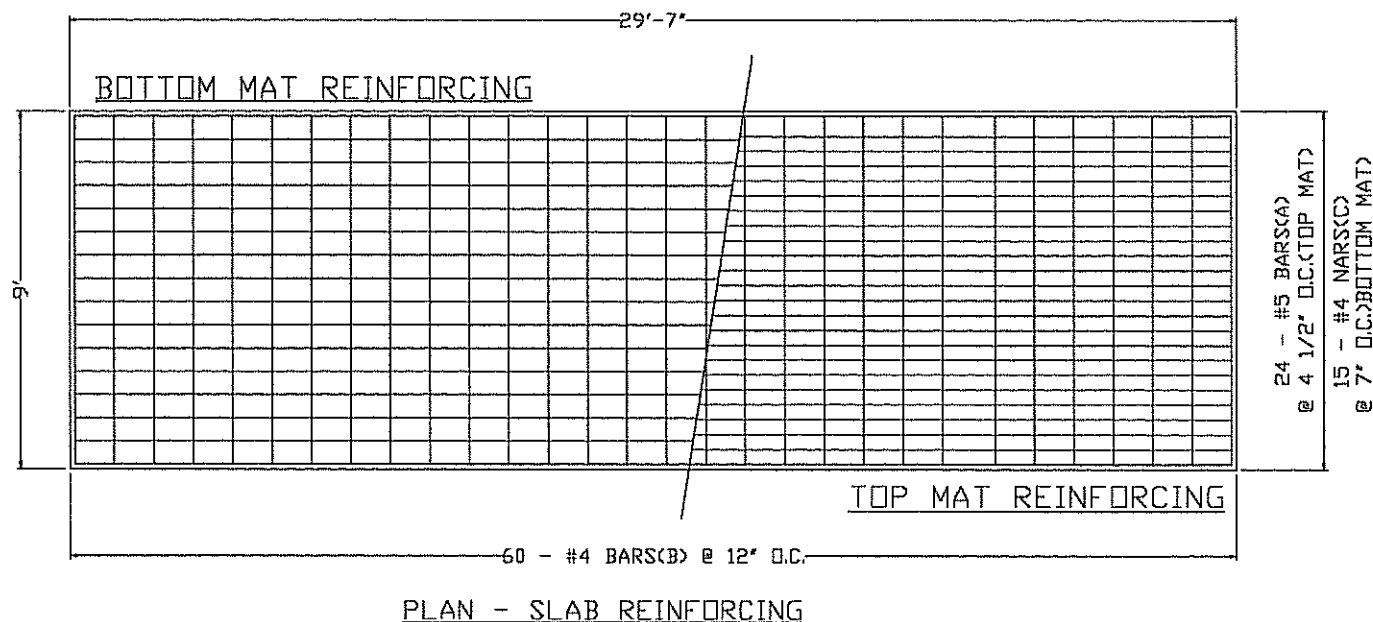
CUSTOMER

DATE	SALES	DRAWN	ENGINEER	CHECKED	SALES ORDER
10/21/13					
DRAWING NUMBER				REVISION	SHEET
Sales Drawings				REV DATE	OF





NOTE: SEE SLAB
SPECIFICATIONS AND
FOUNDATION REQUIREMENTS
SHEET FOR QUESTIONS.



BAR	SIZE	DIMENSION	NUMBER	WEIGHT LBS.
A	#5	352	24	734.27
B	#4	105	60	350.70
C	#4	362	15	293.92

CAST IN PLACE SLAB FOR A 10,000
OR 5,000/5,000 HIGH PROFILE

RECTANGULAR CONVAULT STORAGE TANK

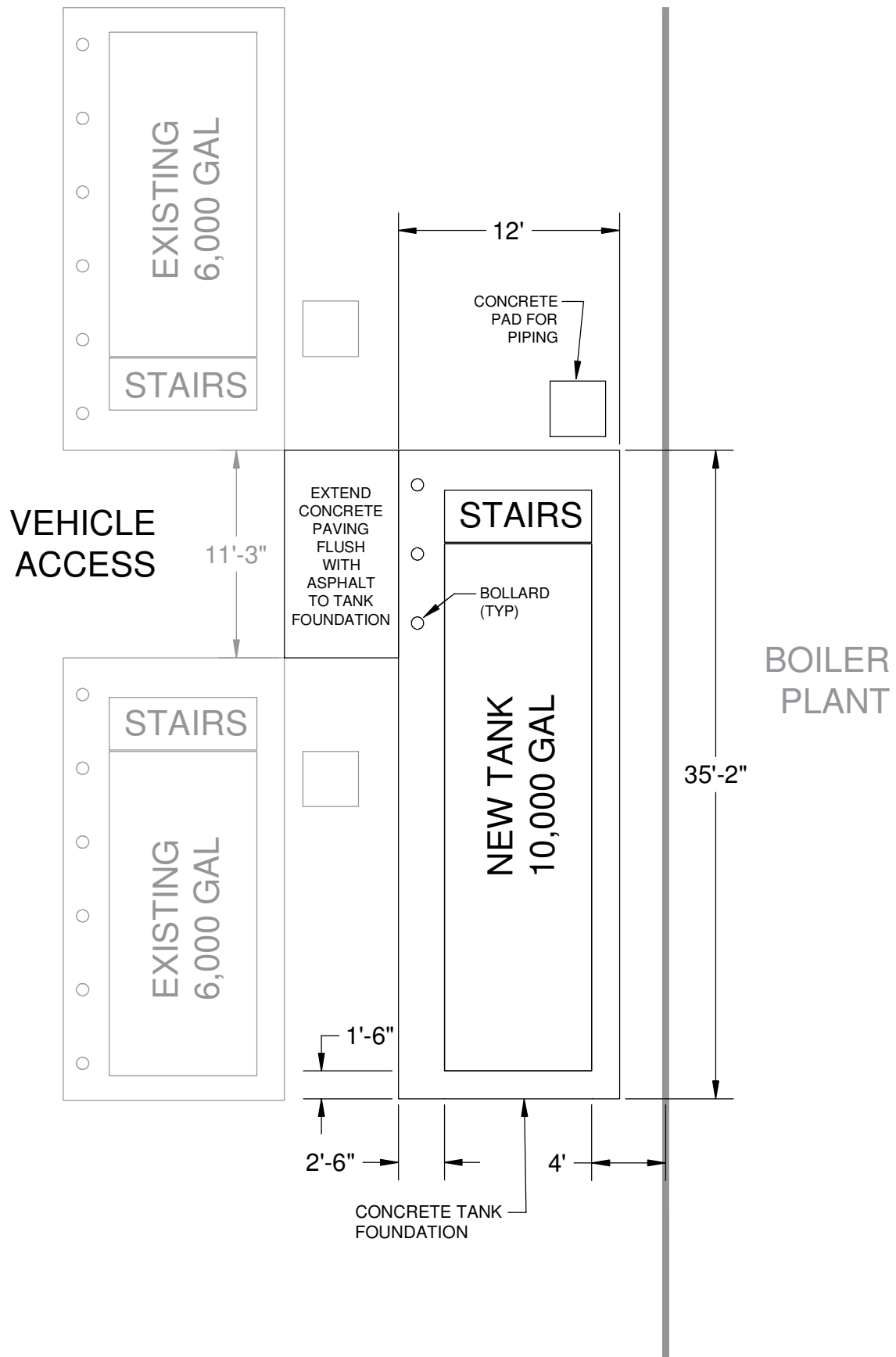
3		
2		
1	02/10/99	GENERAL REVISIONS
0	11/12/98	NEW DRAWING
REV.	DATE	DESCRIPTION



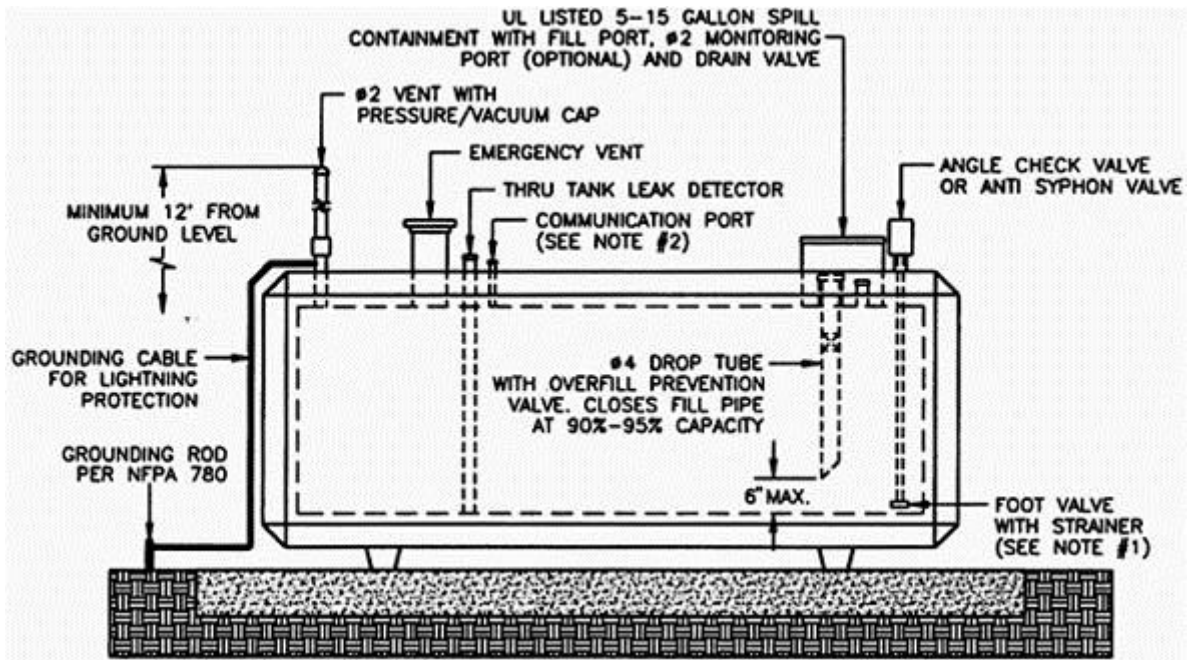
FLORIDA INC.
1410 INDUSTRIAL DRIVE
WILDWOOD, FL 34785

THIS DOCUMENT AND THE DATA DERIVED HEREON OR HEREFROM
IS NOT TO BE REPRODUCED, USED OR DISCLOSED IN WHOLE
OR IN PART, BY ANYONE WITHOUT THE WRITTEN PERMISSION
OF CONVAULT, INC.

TANK & FOUNDATION LAYOUT

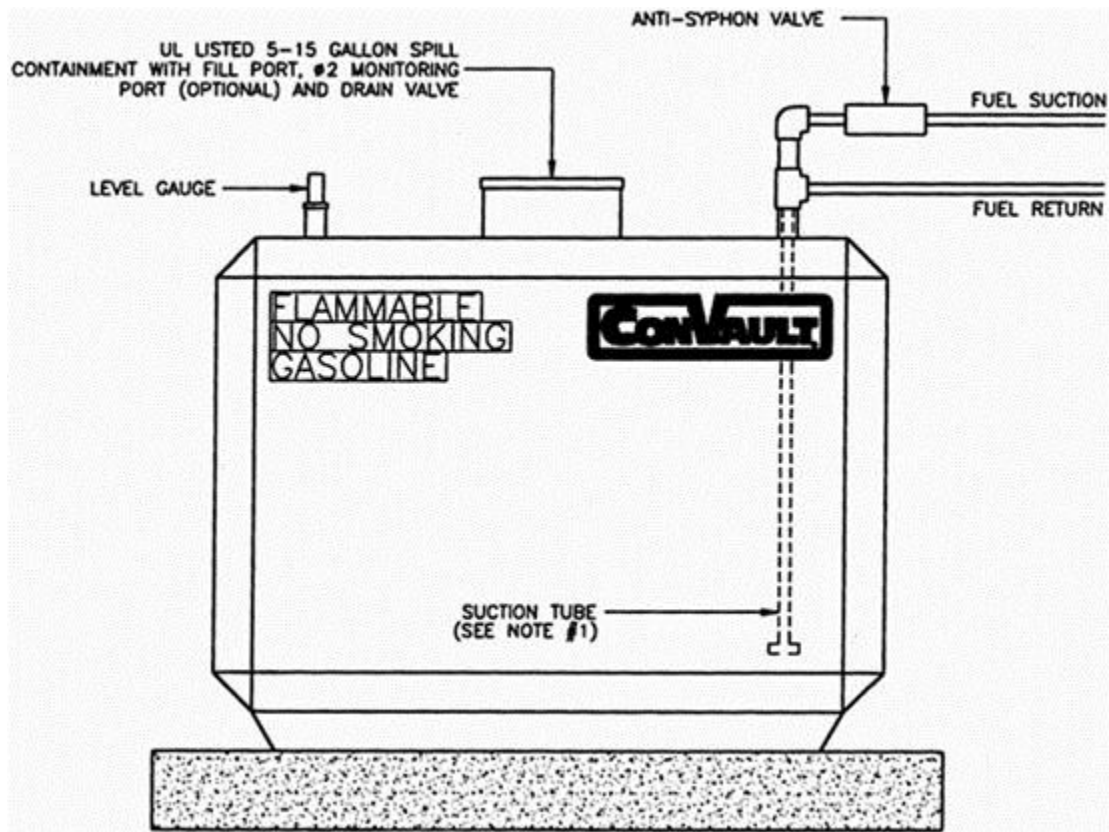


Tank Installation Details



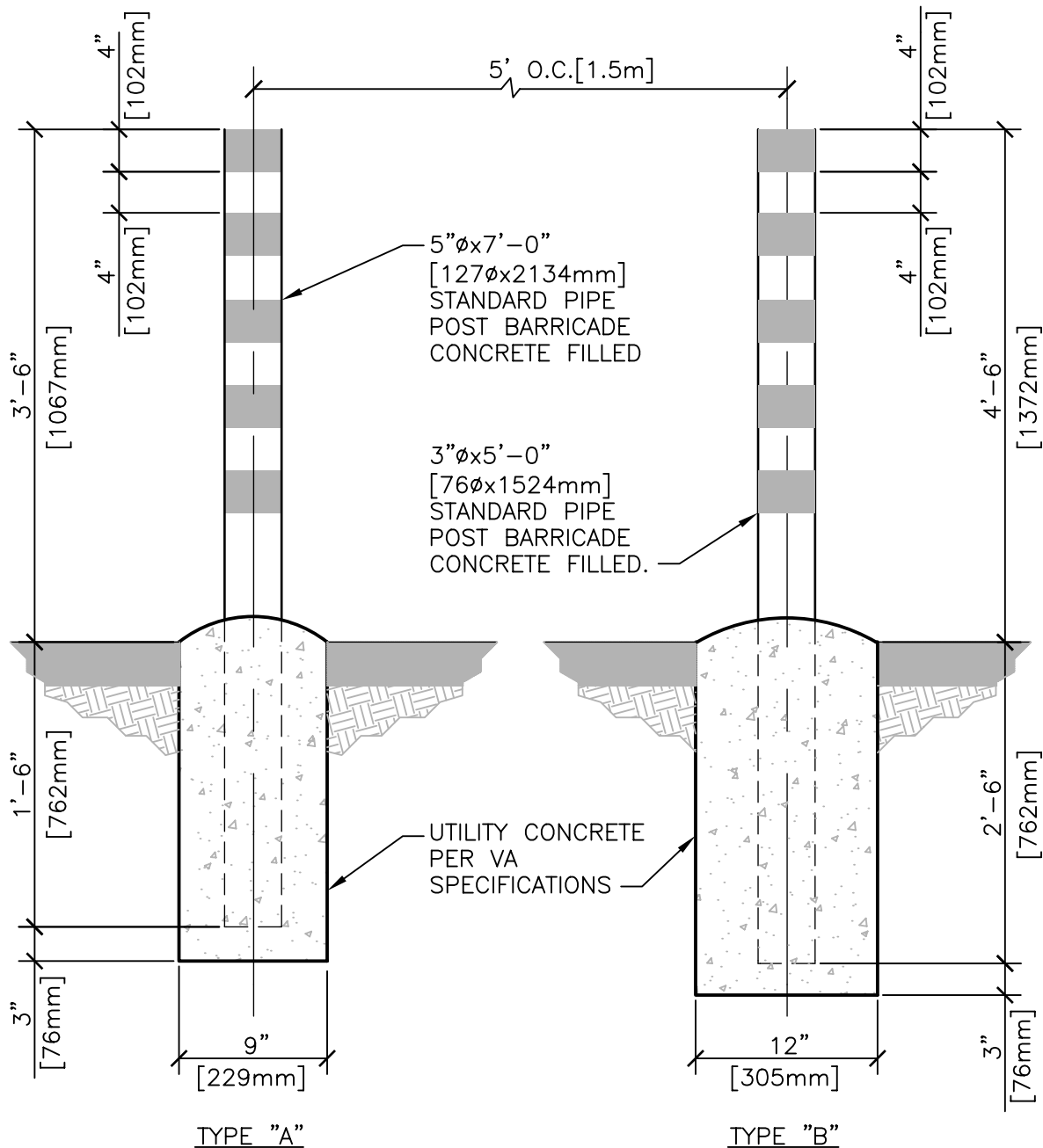
Notes:

1. BOTTOM OF FOOT VALVE/STRAINER TO BE 1" FROM BOTTOM OF STEEL TANK.
2. COMMUNICATION PORT NOT NEEDED FOR DOUBLE WALL STEEL TANKS.
3. STAIRWAY ASSEMBLY TO FILL PORT.



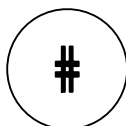
Notes:

1. BOTTOM OF FOOT VALVE/STRAINER TO BE 1" FROM BOTTOM OF STEEL TANK.
2. STAIRWAY ASSEMBLY TO FILL PORT.



NOTES:

1. POST BARRICADES SHALL BE PAINTED WITH ONE PRIME COAT OF RED OXIDE (PAINT NO.1). ONE FINISH COAT OF DULL BLACK ENAMEL PER VA SPECIFICATIONS AND STRIPES CONSISTING OF 4" [102mm] BANDS OF YELLOW REFLECTORIZED TAPE SHALL BE USED UNLESS OTHERWISE SPECIFIED ON THE PLANS.
2. FINISH COLOR COMBINATIONS, OTHER THAN THAT SPECIFIED ABOVE, SHALL BE SUBMITTED TO THE AGENCY FOR APPROVAL.



CONCRETE POST BARRICADES

NTS



Department of
Veterans Affairs

DETAIL TITLE / CONCRETE POST BARRICADES

SCALE :NONE

DATE ISSUED: DECEMBER 2008

CAD DETAIL NO.: SD320523-04.DWG