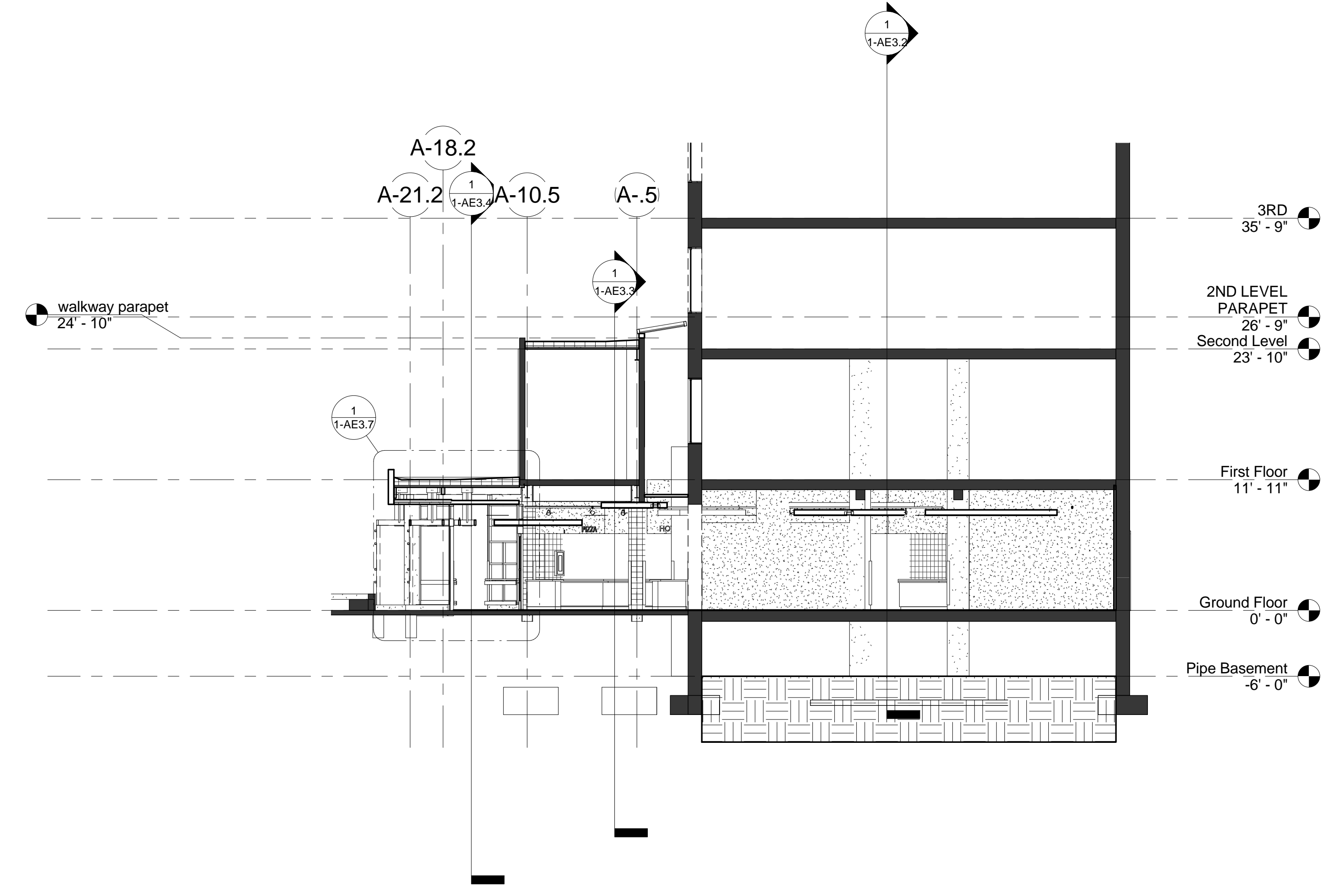
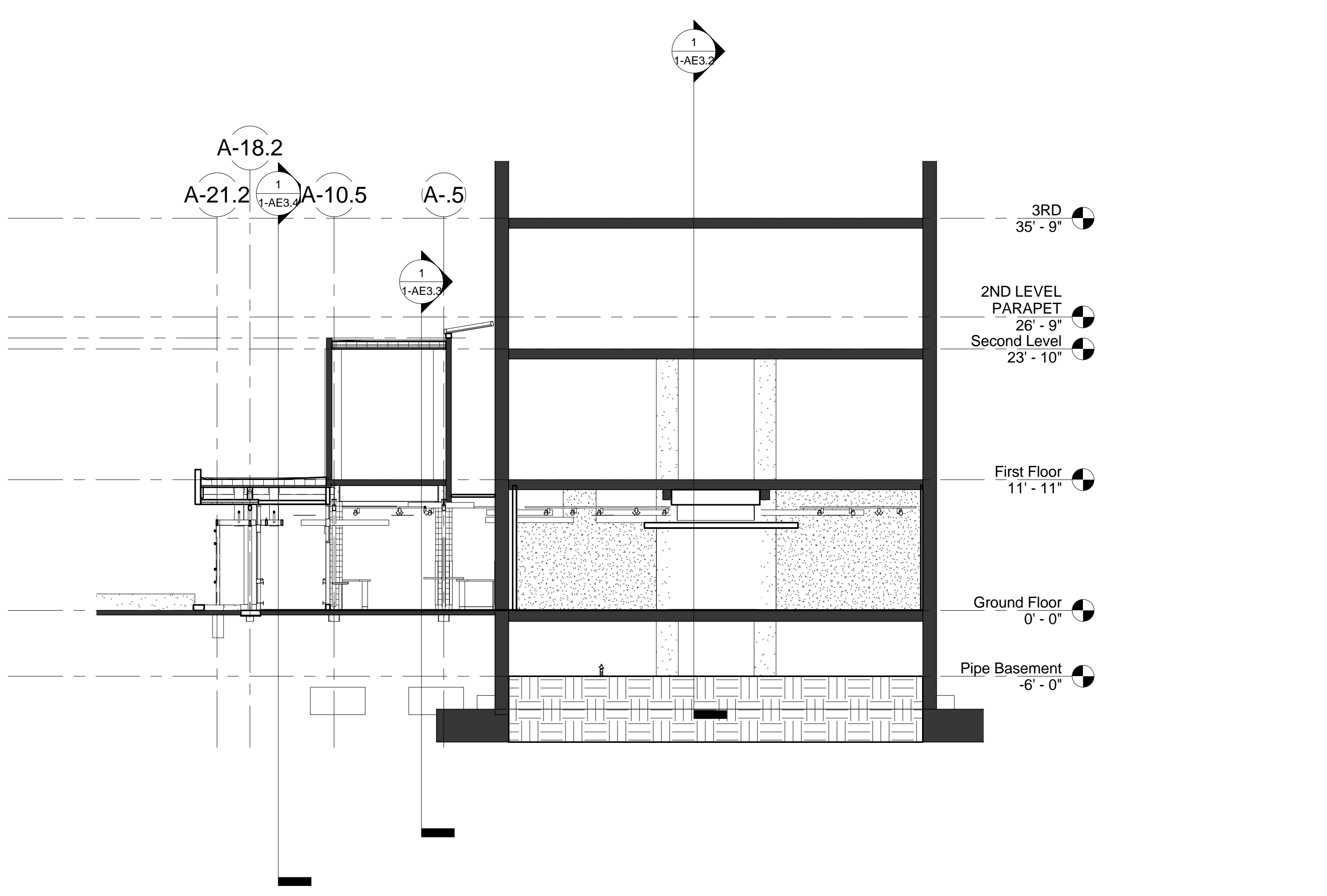


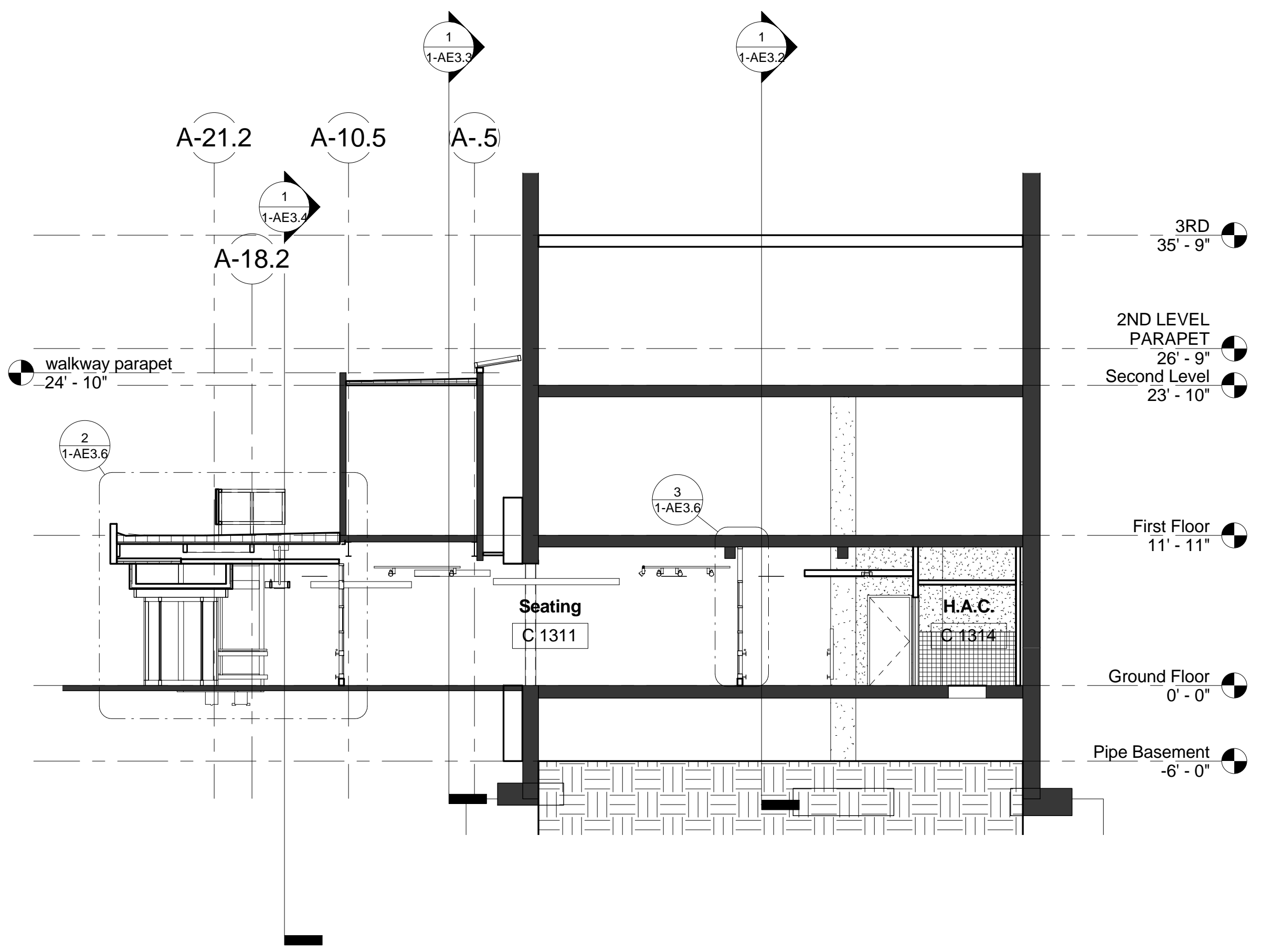
three inches = one foot
one and one half inches = one foot
one inch = one foot
three quarters inch = one foot
one half inch = one foot
three eighths inch = one foot
one quarter inch = one foot
one eighth inch = one foot



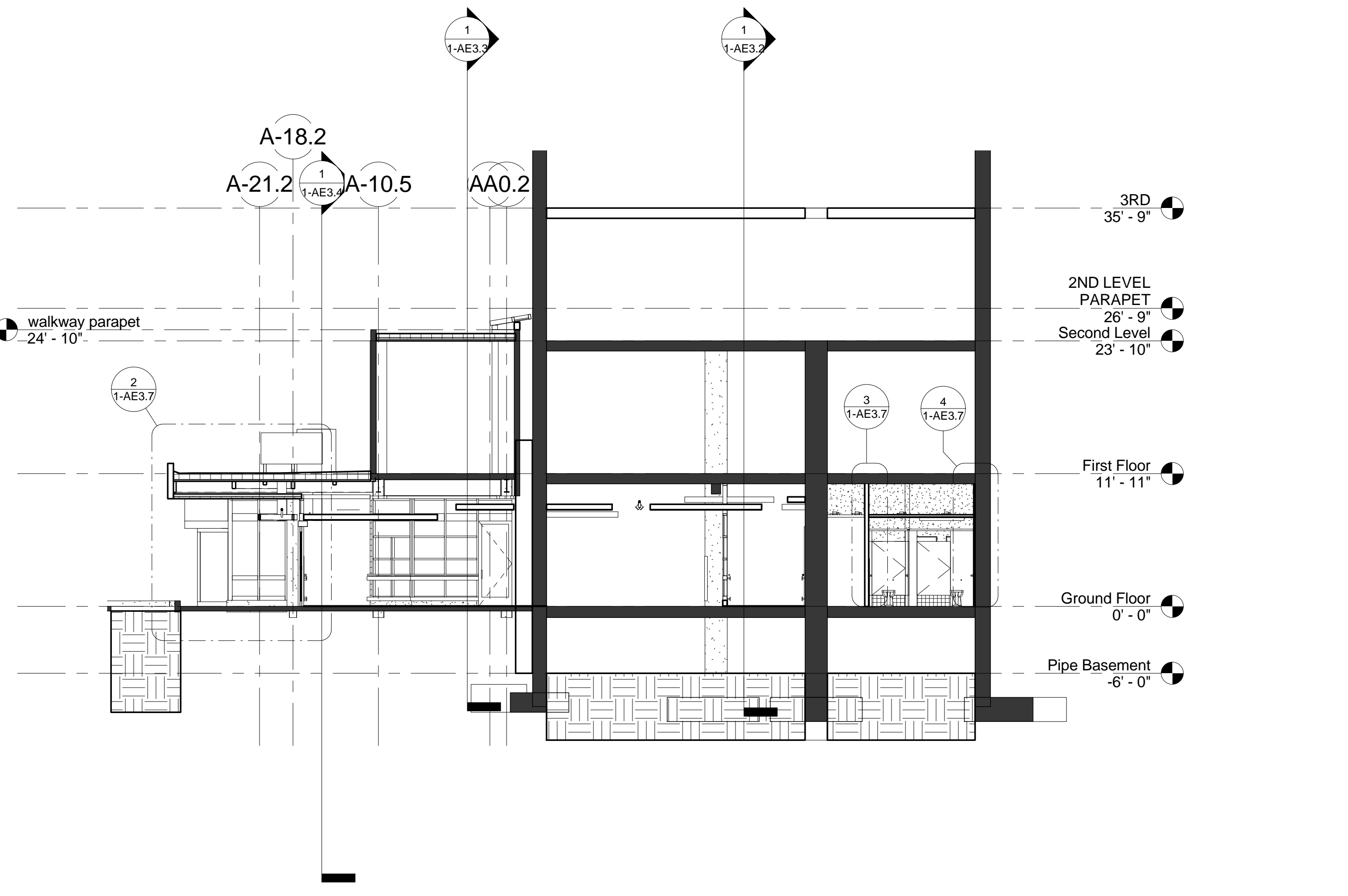
1 Section 17.2 Looking North
1/8" = 1'-0"



2 Section 17.8 Looking North
1/8" = 1'-0"



3 Section 18.8 @ Revolving Door Looking North
1/8" = 1'-0"



4 Section 19.8 Looking North
1/8" = 1'-0"

REVISED		02/02/12	CONSULTANTS:		ARCHITECT/ENGINEERS:	<div><div><div><div>KENNETH B. VAN WOERT REGISTERED 988 STATE OF NEVADA</div><div><div>VanWoert Bigotti architects</div><div>1400 s. virginia st suite c reno, nevada 89502 p: 775.328.1010 f: 775.328.1020 info@vwbaarchitects.com</div></div></div></div></div>		Drawing Title BUILDING SECTIONS		Project Title VA SIERRA NEVADA HEALTH CARE SYSTEM - CANTEEN RELOCATION DESIGN - RENO, NEVADA		Project Number 654-11-227		Office of Construction and Facilities Management
						Approved: Project Director		Location 975 KIRMAN AVE., RENO, NEVADA 89502		Building Number 1				
						Date 06 JAN. 2012		Checked JMT		Drawing Number 1-AE3.1				
								Drawn JMT		Dwg. 9 of 22				
Revisions:		Date										<div><div></div><div>Department of Veterans Affairs</div></div>		

FULLY SPRINKLERED