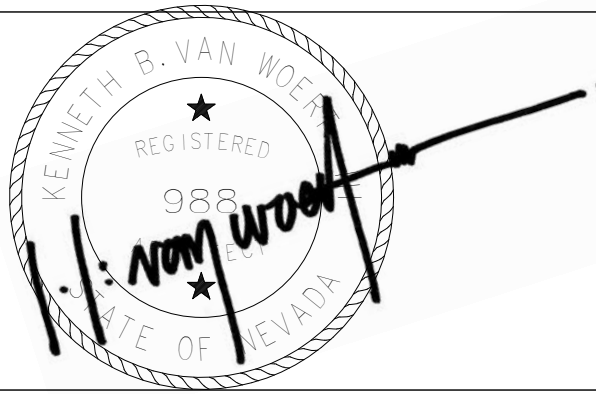


three inches = one foot
one and one half inches = one foot
one inch = one foot
three quarters inch = one foot
three eighths inch = one foot
one quarter inch = one foot
one eighth inch = one foot

REVISED	2/02/12
Revisions:	Date

CONSULTANTS:

ARCHITECT/ENGINEERS:

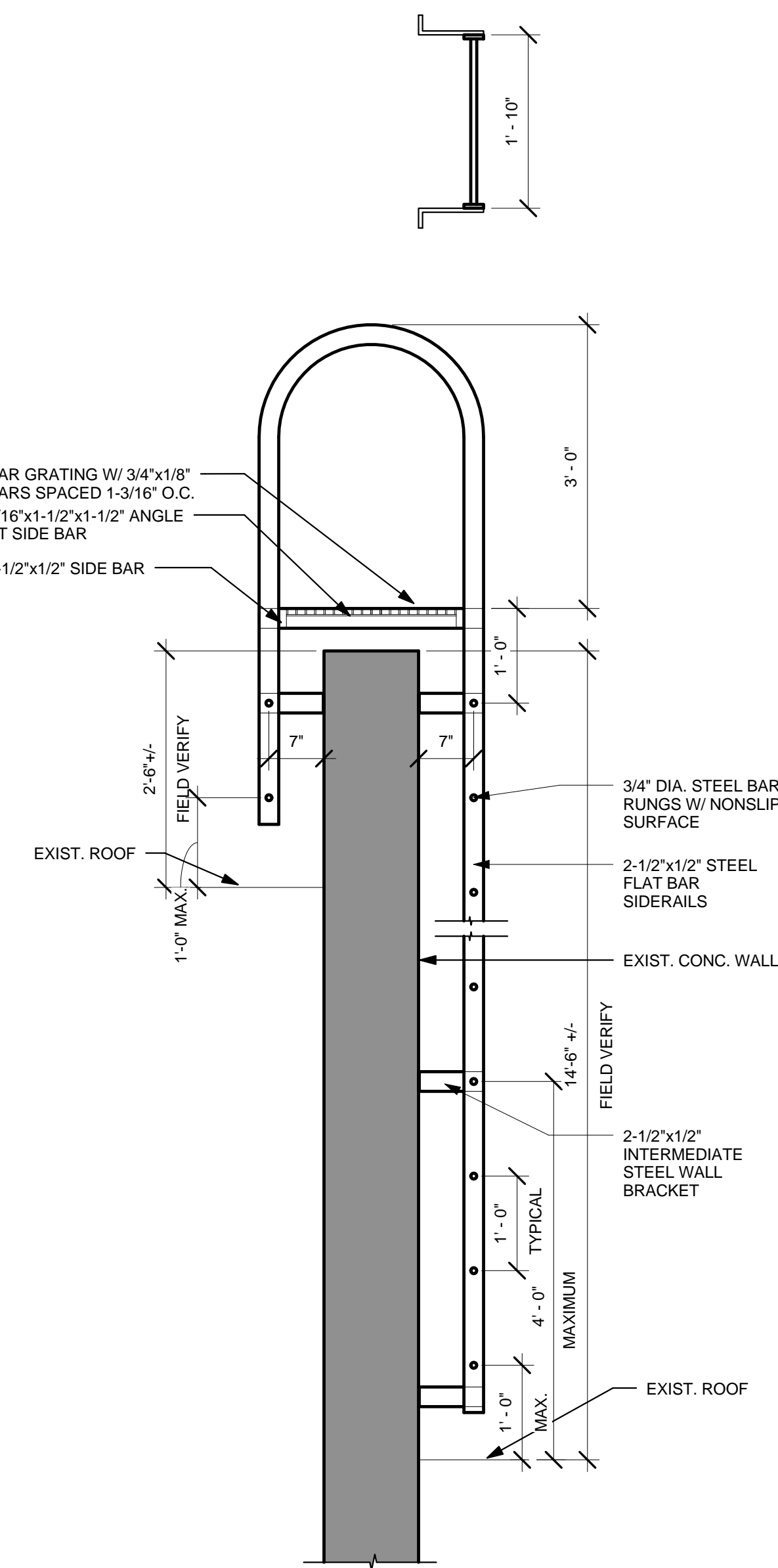


**VanWoert
Bigotti**
architects
1400 s. virginia st suite c
reno, nevada 89502
p: 775.328.1010
f: 775.328.1020
info@vwbarchitects.com

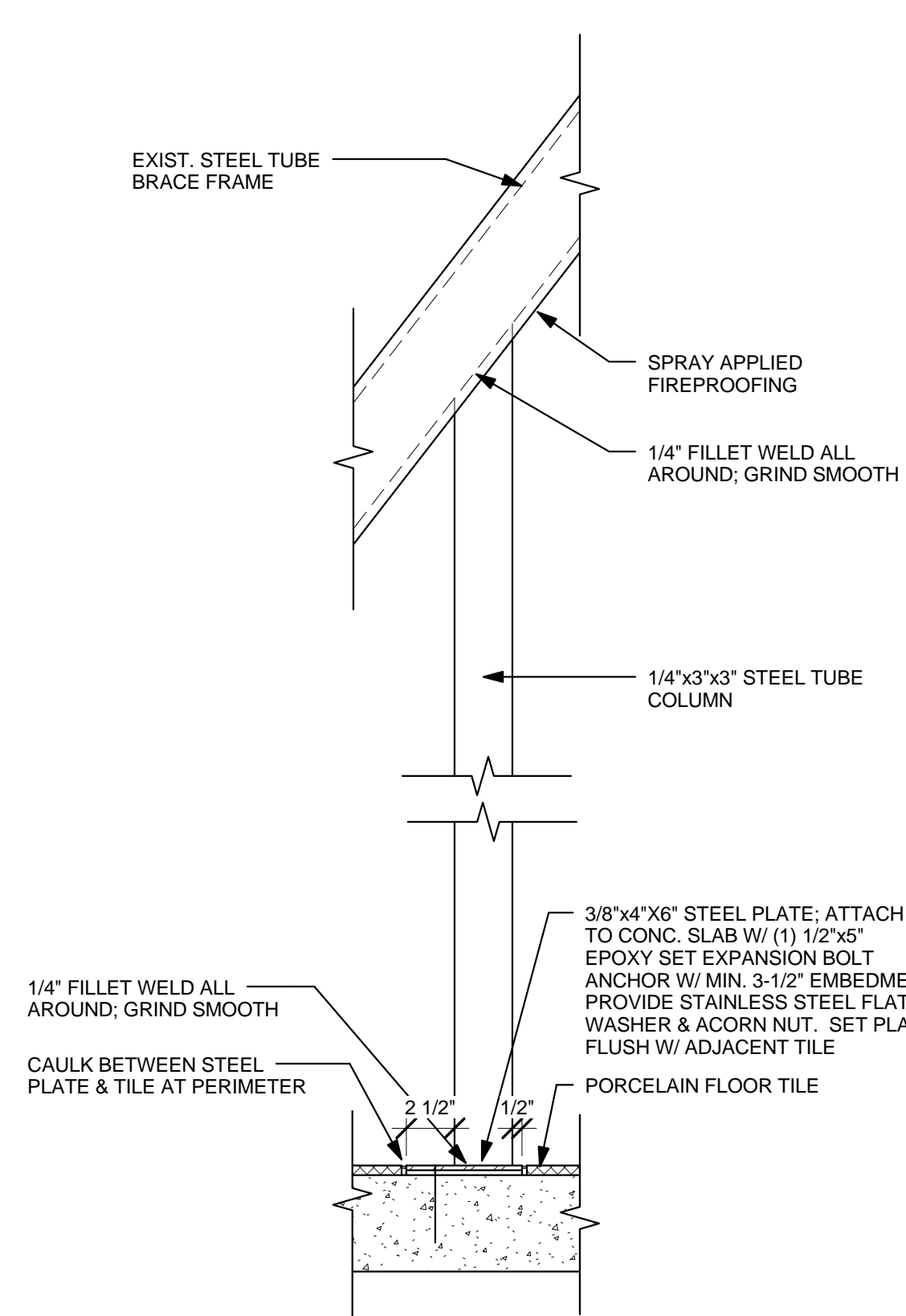
Drawing Title MISCELLANEOUS DETAILS
Approved: Project Director

Project Title VA SIERRA NEVADA HEALTH CARE SYSTEM - CANTEEN RELOCATION DESIGN - RENO, NEVADA	Project Number 654-11-227	Office of Construction and Facilities Management Department of Veterans Affairs
Location 975 KIRMAN AVE., RENO, NEVADA 89502	Building Number 1	
Date 06 JAN. 2012	Drawing Number 1-AE5.2	
Checked JMT	Drawn BGS, HDF	
Dwg. 21 of 22		

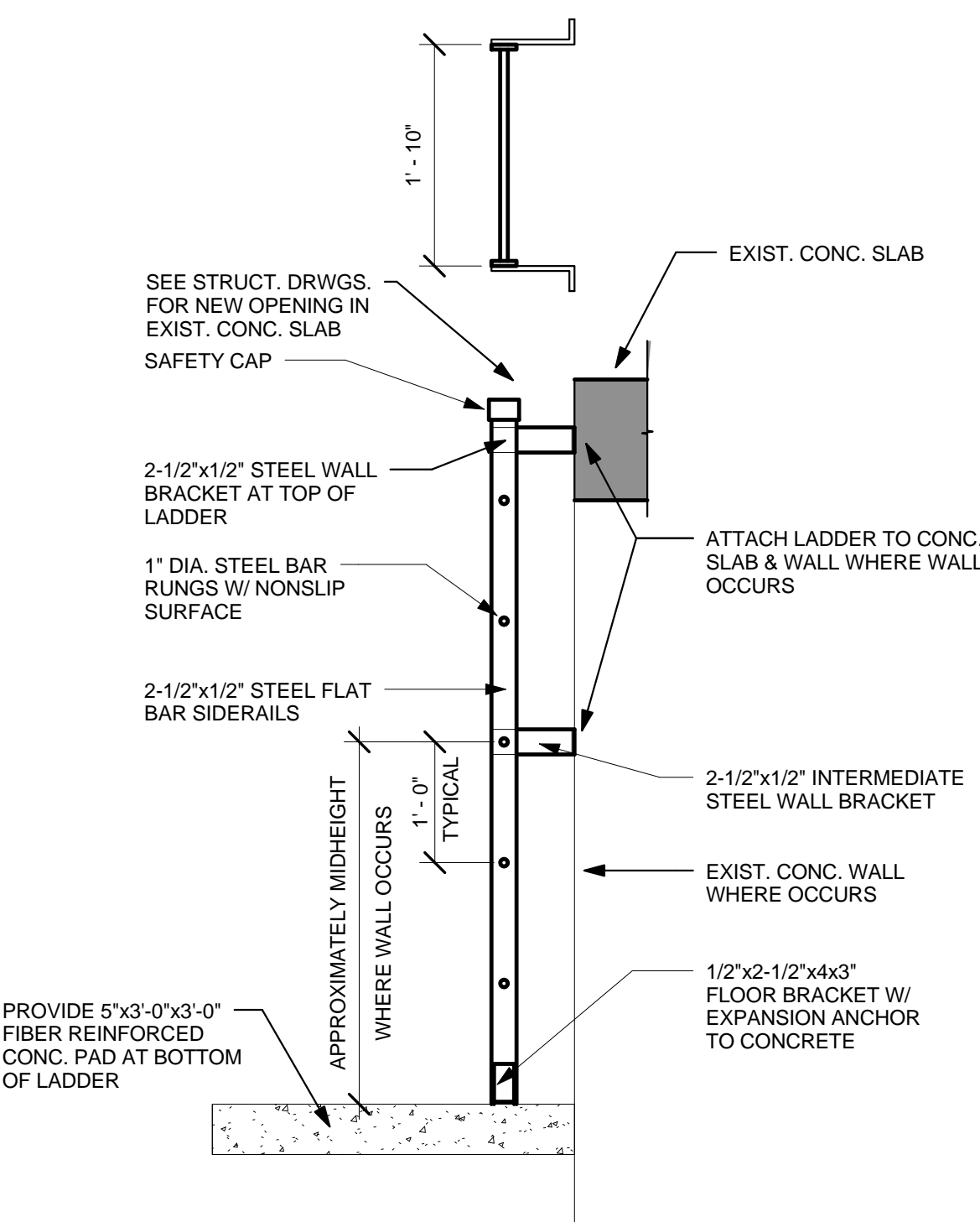
FULLY SPRINKLERED



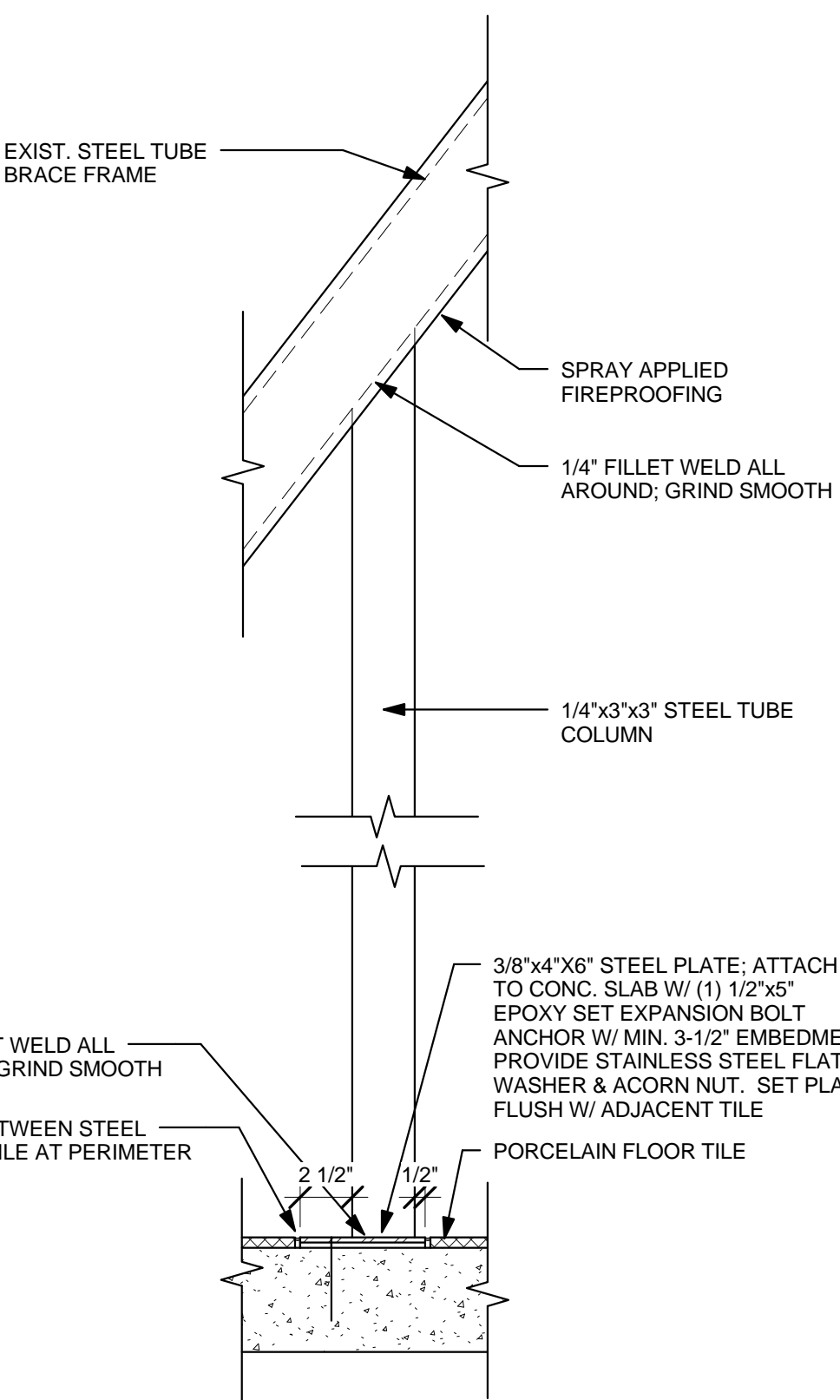
12 STEEL ROOF ACCESS LADDER
3/4" = 1'-0"



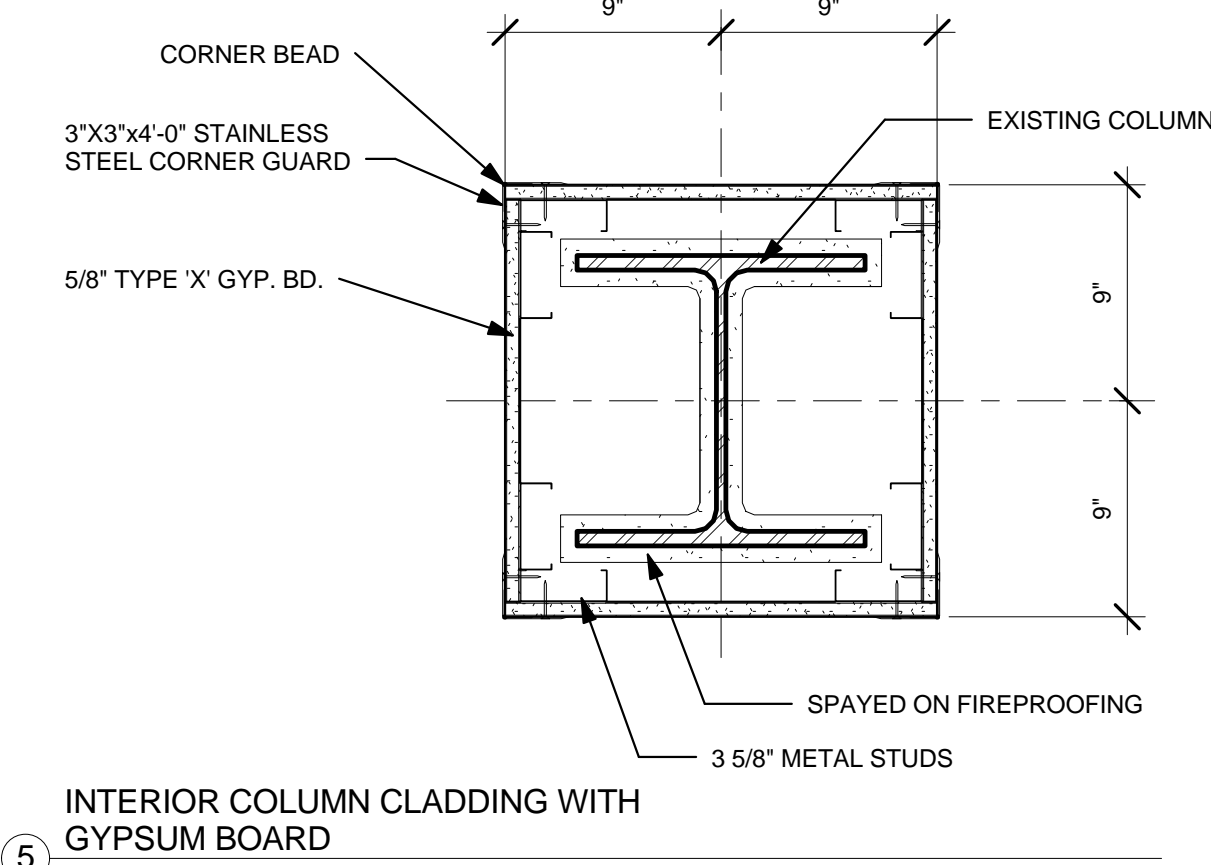
10 INTERIOR COLUMN DETAIL
1 1/2" = 1'-0"



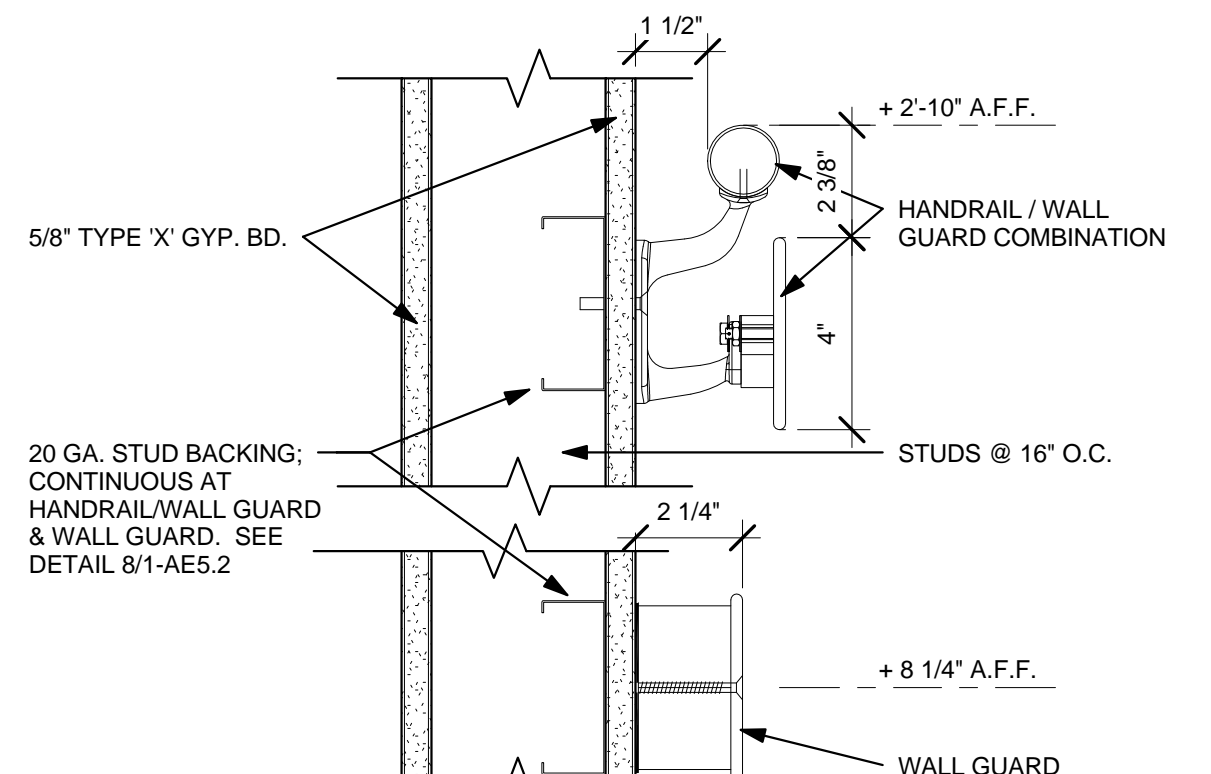
11 STEEL ACCESS LADDER
3/4" = 1'-0"



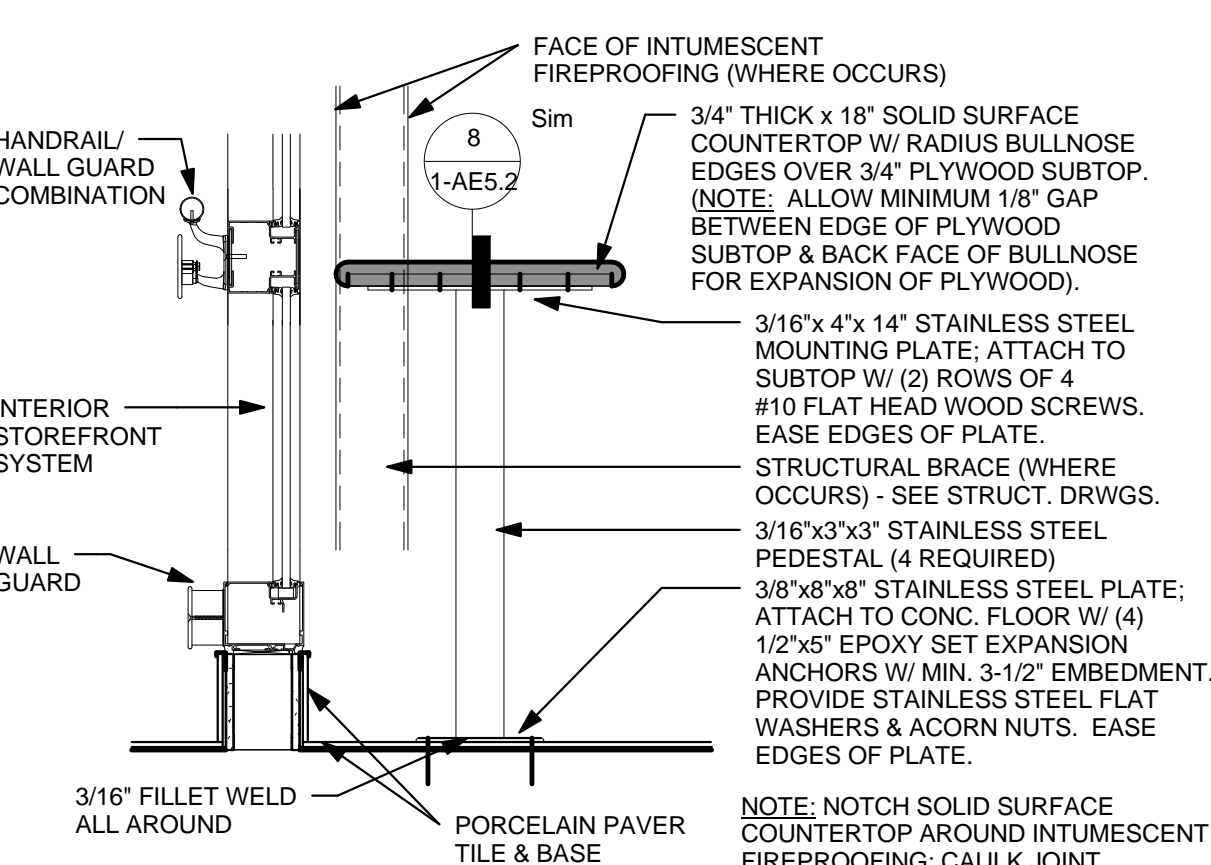
10 INTERIOR COLUMN DETAIL
1 1/2" = 1'-0"



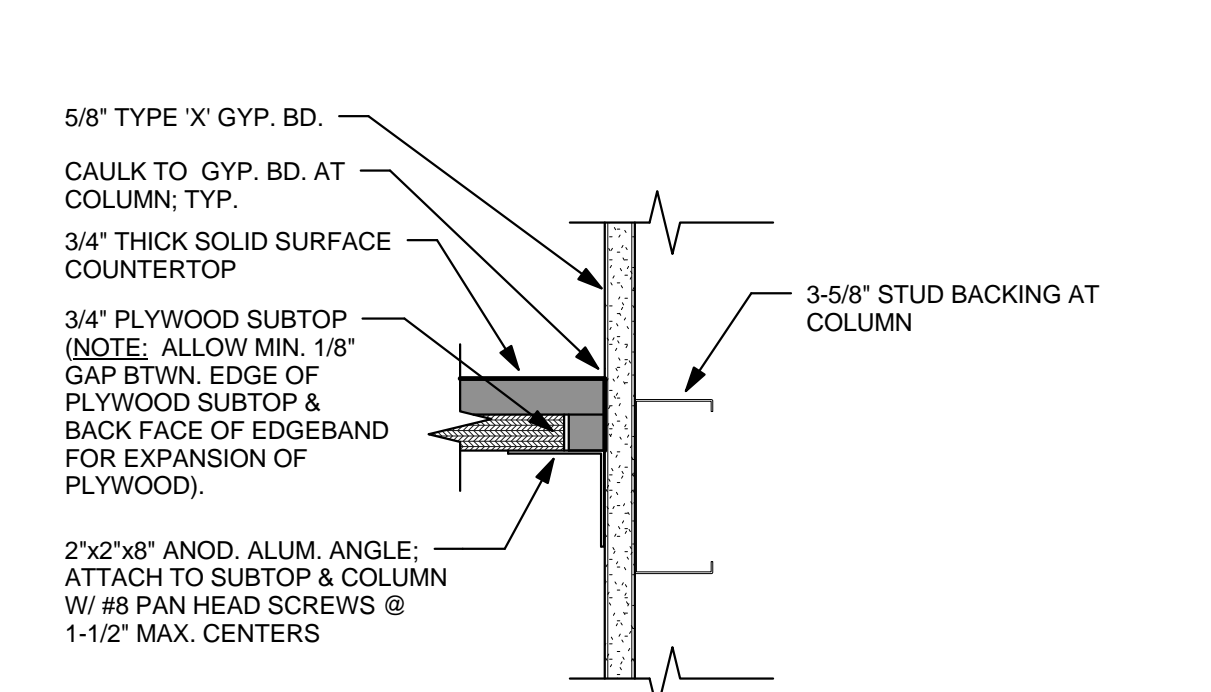
5 INTERIOR COLUMN CLADDING WITH GYPSUM BOARD
1 1/2" = 1'-0"



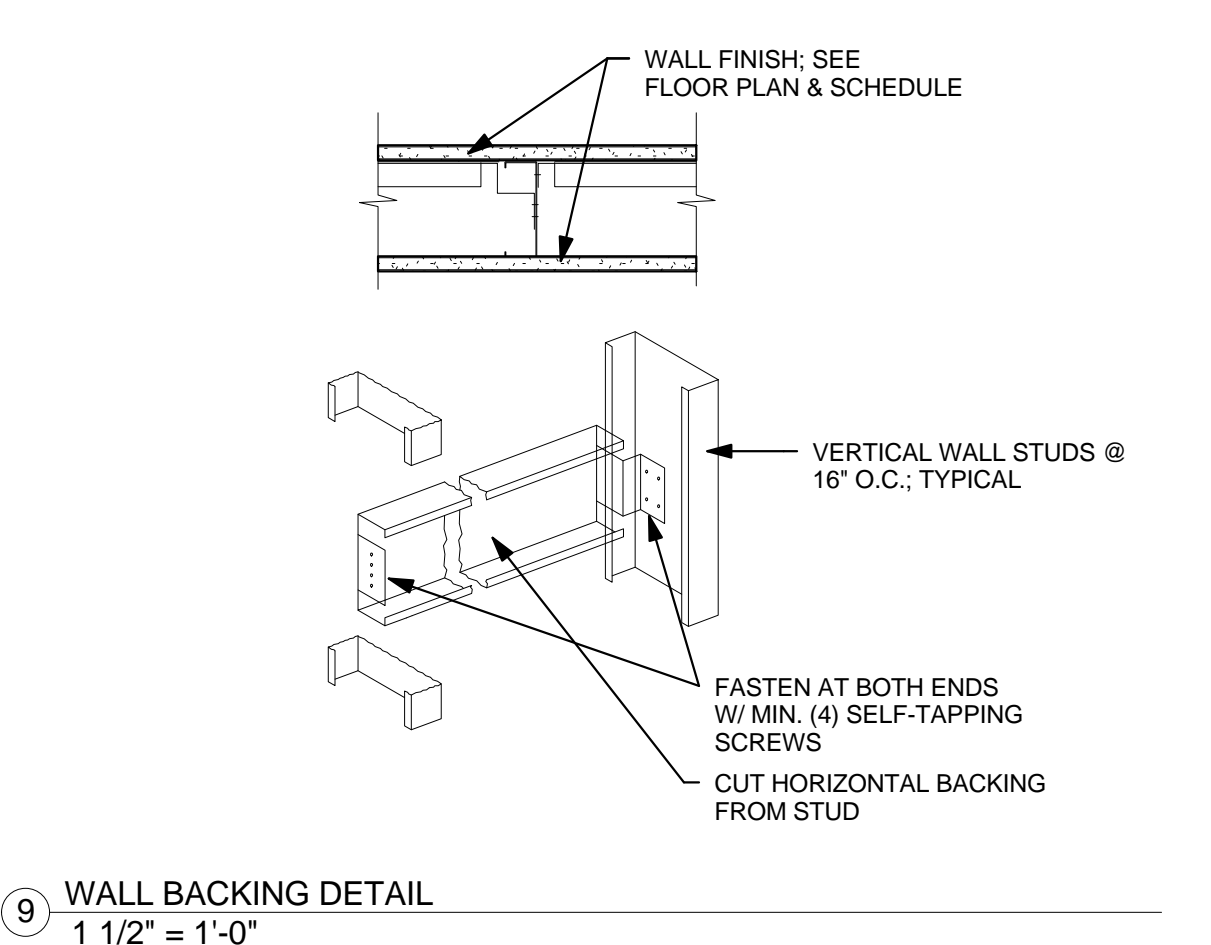
6 HANDRAIL/WALL GUARD COMBINATION
3" = 1'-0"



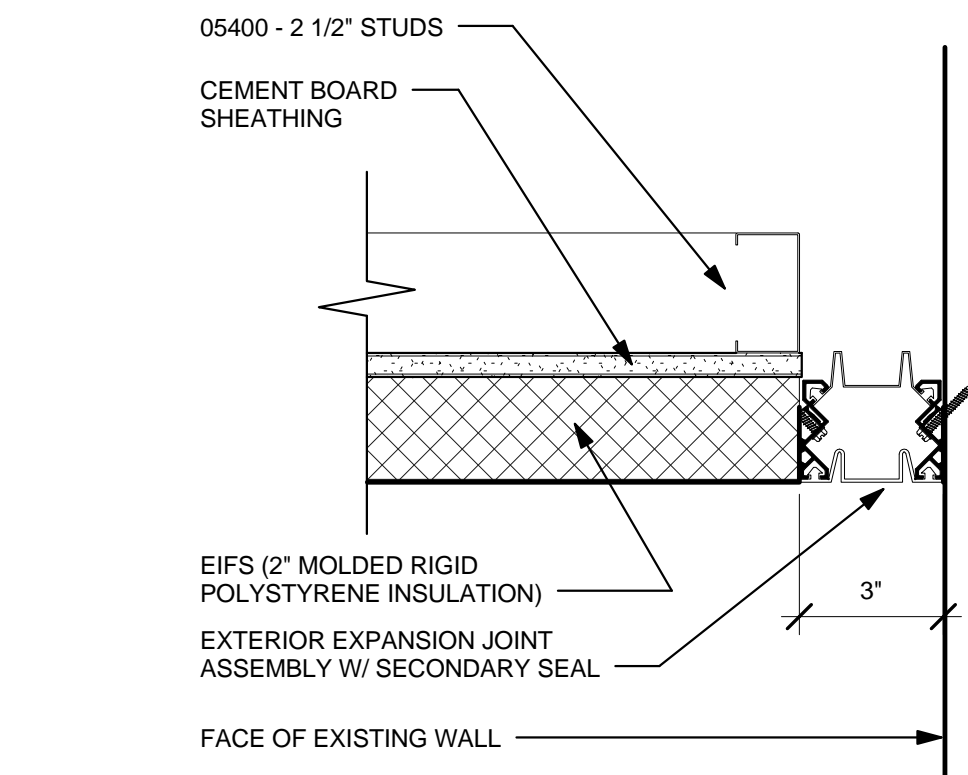
7 SOLID SURFACE COUNTERTOP
1" = 1'-0"



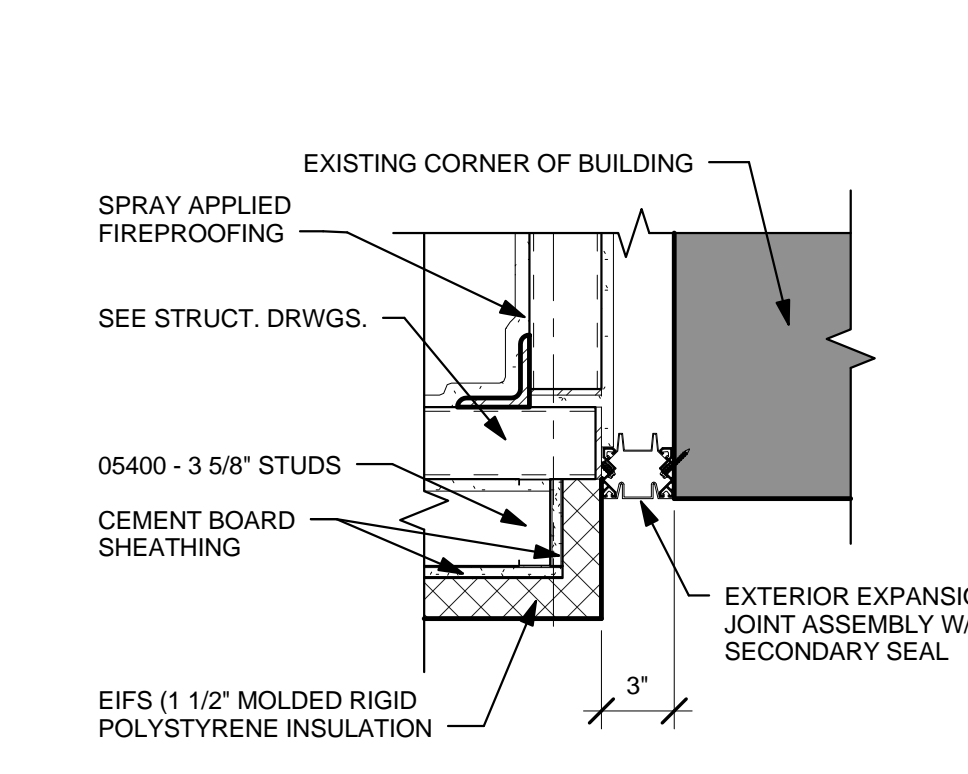
8 COUNTERTOP LEDGER AT COLUMN
3" = 1'-0"



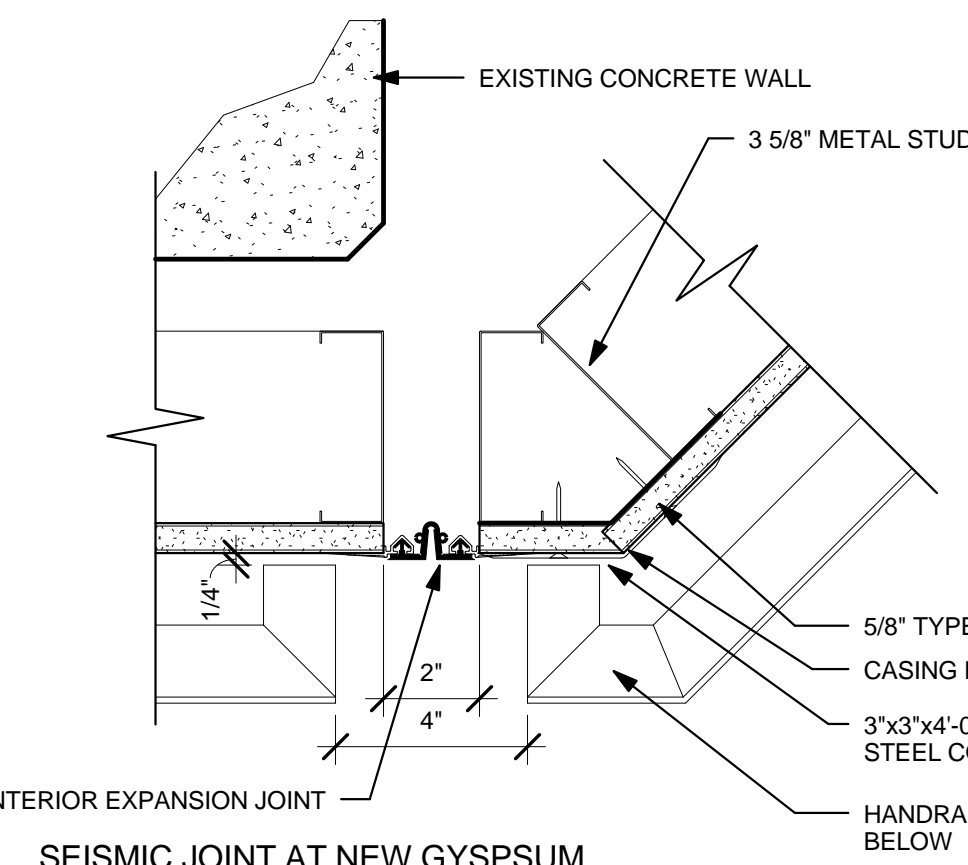
9 WALL BACKING DETAIL
1 1/2" = 1'-0"



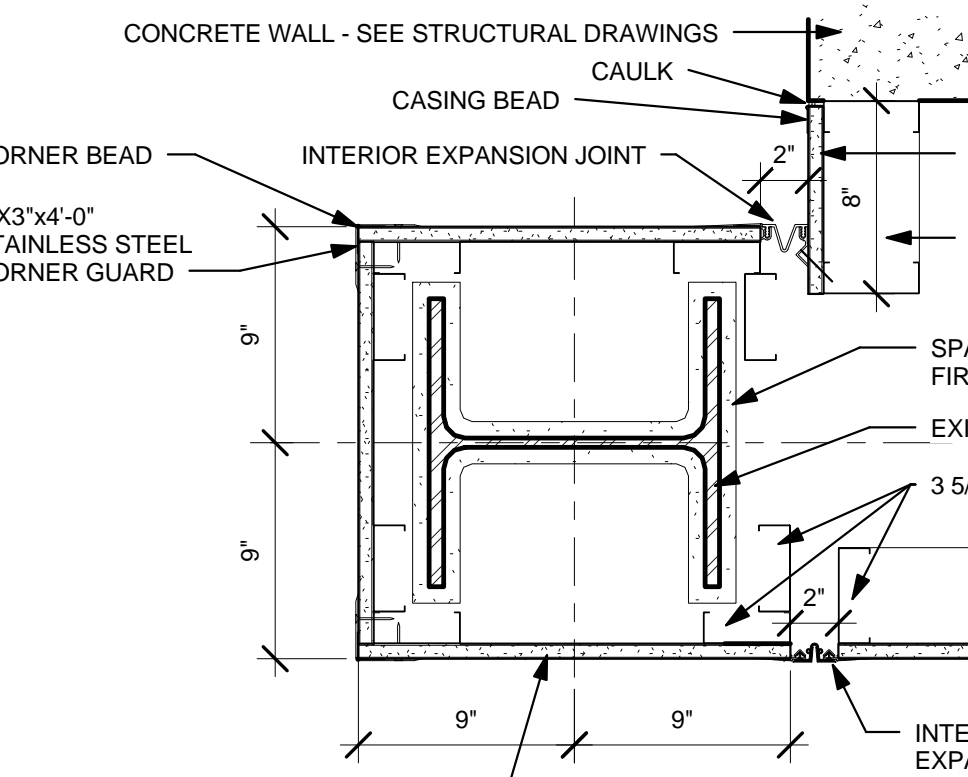
1 SEISMIC JOINT AT EIFS SOFFIT & EXISTING WALL
3" = 1'-0"



2 SEISMIC JOINT AT EIFS FASCIA & EXISTING WALL
1 1/2" = 1'-0"



3 SEISMIC JOINT AT NEW GYPSUM BOARD WALL AT CORNER
3" = 1'-0"



4 SEISMIC JOINT AT NEW GYPSUM BOARD WALL TO COLUMN CLADDING
1 1/2" = 1'-0"