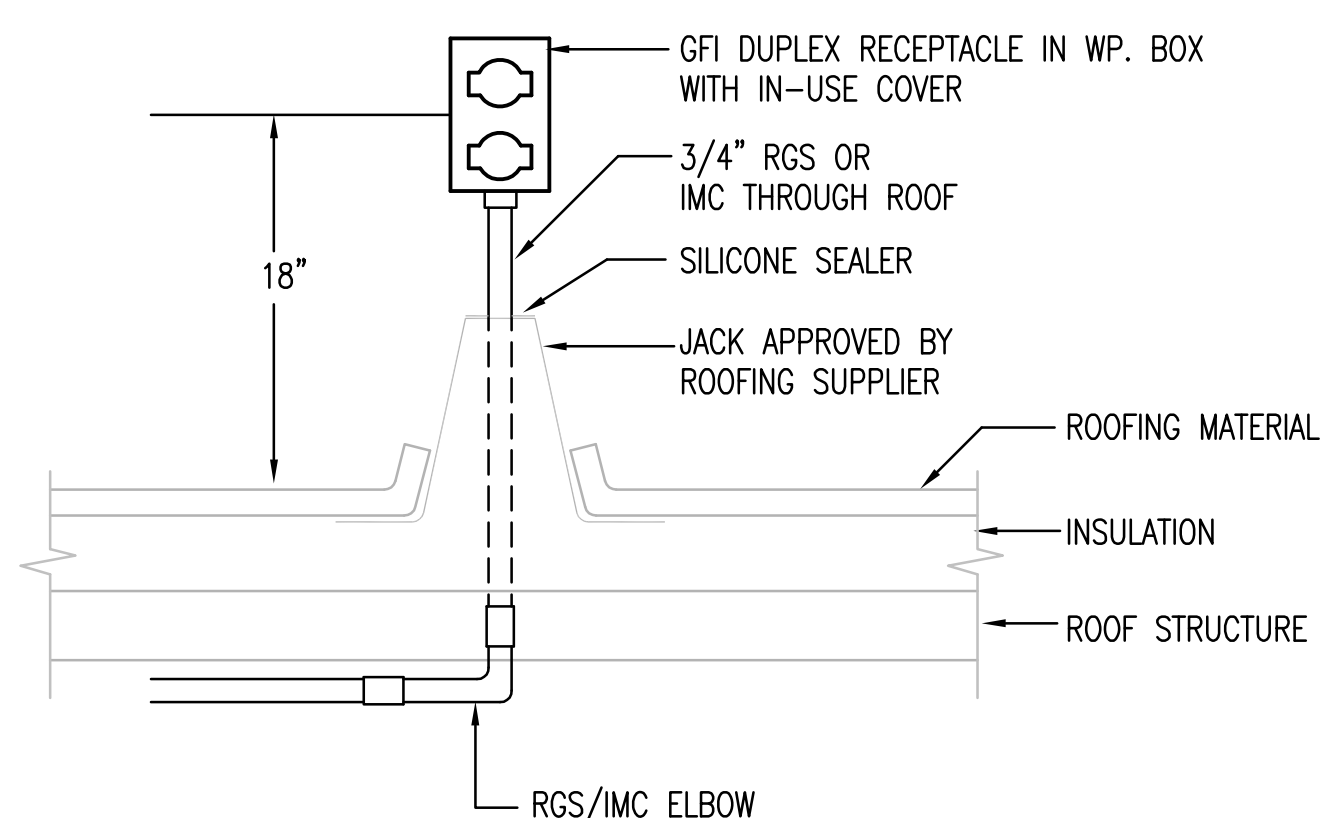
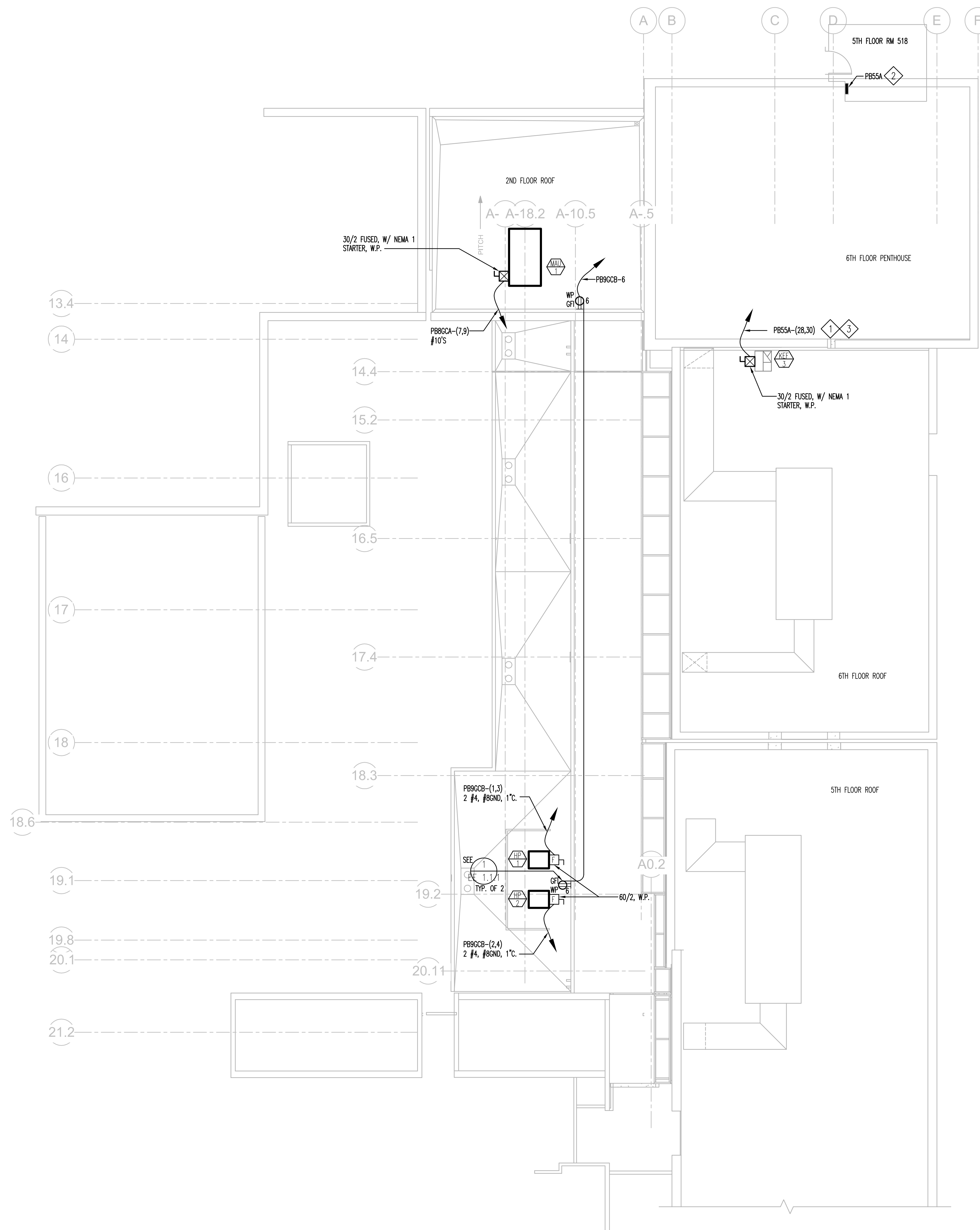


- 1 REPLACE SPARE 20A/1P BREAKER WITH 20A/2P CIRCUIT BREAKER.
- 2 PANEL PB 55A LOCATED ON 5TH FLOOR.
- 3 VERIFY CONDUIT ROUTING IN THE FIELD W/ EXISTING CONDITIONS.




1 ROOF MOUNTED RECEPTACLE  
EE-111 SCALE: NTS

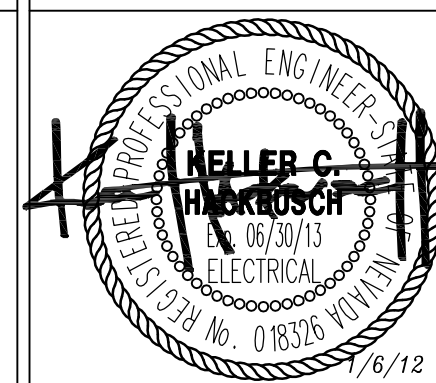


MECHANICAL POWER ROOF PLAN - ROOF LEVEL  
AREA 1-5

A AREA 1-5  
EE-1.1 SCALE: 1/8" = 1'0"

<div style="display: flex; justify-content: space-between; align-items: center;"> <div>  </div> <div> <div style="border-bottom: 1px solid black; height: 1.2em; width: 100%;"></div> <div style="border-bottom: 1px solid black; height: 1.2em; width: 100%;"></div> <div style="border-bottom: 1px solid black; height: 1.2em; width: 100%;"></div> <div style="border-bottom: 1px solid black; height: 1.2em; width: 100%;"></div> <div style="border-bottom: 1px solid black; height: 1.2em; width: 100%;"></div> <div style="border-bottom: 1px solid black; height: 1.2em; width: 100%;"></div> <div style="border-bottom: 1px solid black; height: 1.2em; width: 100%;"></div> <div style="border-bottom: 1px solid black; height: 1.2em; width: 100%;"></div> </div> </div>	<div style="display: flex; justify-content: space-between; align-items: center;"> <div>25 JAN 2017</div> <div></div> </div>
<div style="display: flex; justify-content: space-between; align-items: center;"> <div>Revisions:</div> <div>Date:</div> </div>	

 **DINTER**  
ENGINEERING CONFIDENCE  
Airfield Electrical Mechanical  
385 Gentry Way  
Reno, NV 89502  
Ph: 775.826.4044  
Fax: 775.826.4190  
[www.dinter.com](http://www.dinter.com) J-4217.6



  
vern martin design associates  
( a Nevada Corporation)  
Food Facilities Design  
760 Robin St., Reno, Nevada 89509  
P: (775) 240-2637 F: (775) 201-0066  
E:vern@martinreno.com

**VanWoert  
Bigotti**  
architects

1400 s. virginia st suite c  
reno, nevada 89502  
p: 775.328.1010  
f: 775.328.1010  
info@vwarchitects.com

Approved: Project Director

Date  
25 JAN 2012

Checked	FRG
---------	-----

Drawn  
MWR

EE1.1.1

Dwg. - of

Office of  
Construction  
and Facilities  
Management



FULLY SPRINKLERED