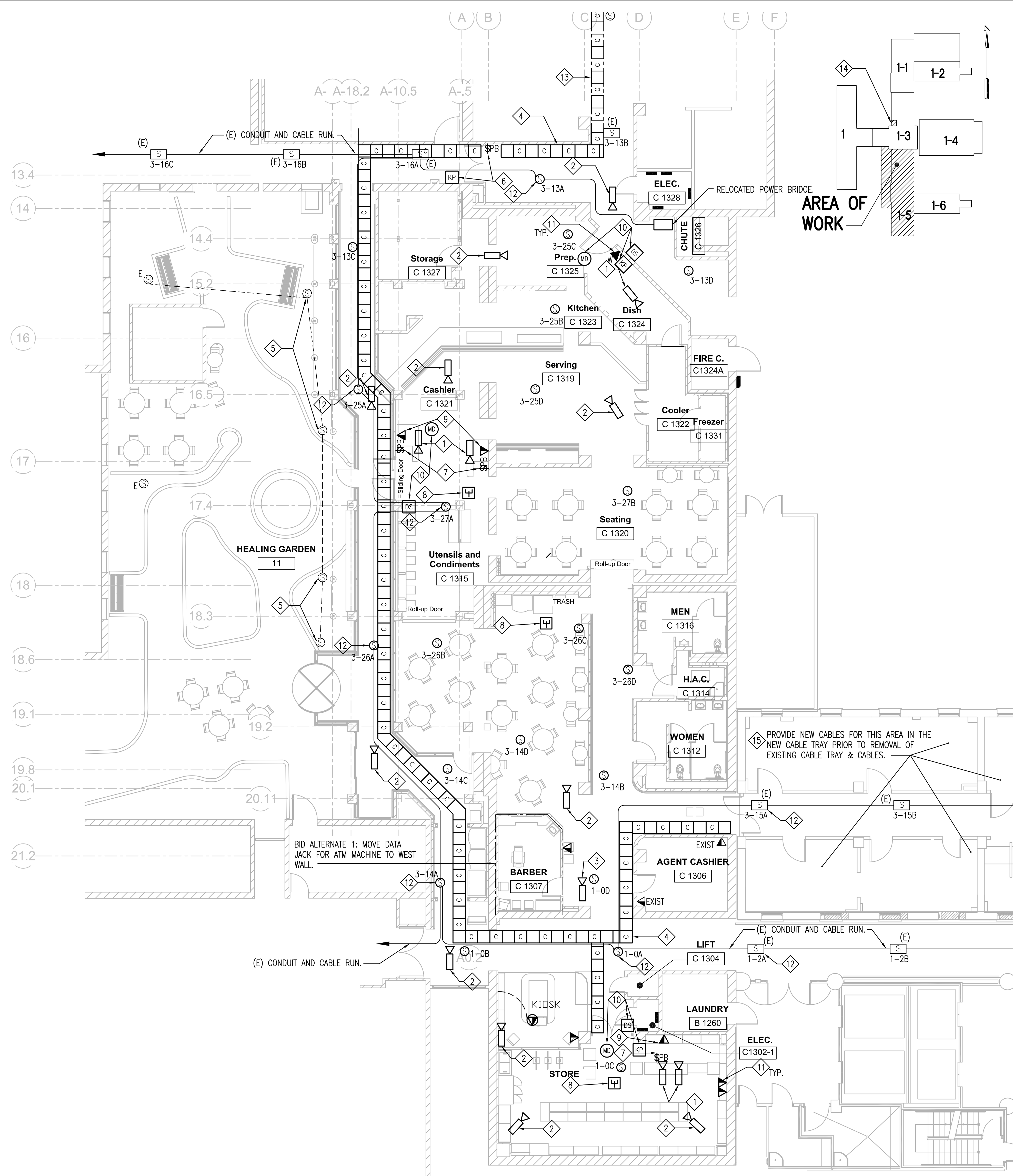



- 1) FIXED CAMERAS MOUNTED ABOVE CASH REGISTERS.
- 2) PAN & TILT CAMERA.
- 3) ALTERNATE LOCATION FOR PAN & TILT CAMERA.
- 4) INSTALL NEW 12" WIDE x 6" DEEP LADDER TYPE CABLE TRAY ABOVE NEW CORRIDOR CEILING FOR NEW DATA/TELEPHONE CABLES. CONNECT TO EXISTING CABLE TRAY. REPLACE EXISTING DATA/ TELEPHONE CABLES AS NEEDED FOR NEW CABLE TRAY ROUTING.
- 5) RELOCATE EXISTING ROCK SPEAKERS TO NEW PLANTER AREA. VERIFY LOCATION IN THE FIELD. RECONNECT TO EXISTING SPEAKER SYSTEM.
- 6) ADD 3/4" CONDUIT TO ABOVE CEILING FOR FUTURE ACCESS CONTROL.
- 7) PANIC BUTTON, RUN CAT 6 TO IT CLOSET JUNCTION BOX, 10' OF CABLE COILED.
- 8) WIRE-LESS WIFI, RUN CAT 6 TO IT CLOSET JUNCTION BOX.
- 9) WIRE-LESS RAPTOR SYSTEM.
- 10) CONNECT NEW DOOR SWITCHES, KEYPADS AND MOTION DETECTOR INTO EXISTING SECURITY SYSTEM.
- 11) RUN 4 PAIR UTP CAT 6 CABLE BACK TO EXISTING SERVER ROOM 2A VIA CABLE TRAY; 1" C IN WALLS & TO TRAY.
- 12) SPEAKER W/ PAN UNIT. SHEET ET1.0.2 FOR SPEAKER SINGLE LINE.
- 13) USE EXISTING CABLE TRAY FOR CABLE RUNS TO EXISTING SERVER ROOM 2A.
- 14) APPROXIMATE LOCATION OF EXISTING SERVER ROOM 2A. VERIFY EXACT CABLE ROUTING, LENGTHS, CONNECTIONS IN THE FIELD.
- 15) VERIFY EXACT QUANTITIES, LOCATIONS, ROUTING, CABLE LENGTHS, ETC. IN THE FIELD.

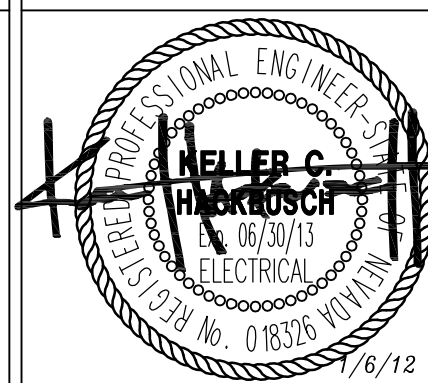


TELE-COMM PLAN - GROUND FLOOR
AREA 1-5

SCALE: 1/8" = 1'0"

[illegible]

 **DINTER**
ENGINEERING CONFIDENCE
Airfield Electrical Mechanical
385 Gentry Way
Reno, NV 89502
Ph: 775.826.4044
Fax: 775.826.4190
www.dinter.com J-4217.6



VMDA
vern martin design associates
(a Nevada Corporation)
Food Facilities Design
760 Robin St., Reno, Nevada 89509
P: (775) 240-2637 F: (775) 201-0066
E:vern@martinreno.com

VanWoert Bigotti

1400 s. virginia st suite c
reno, nevada 89502
p: 775.328.1010
f: 775.328.1020
info@vwarchitects.com

architects

Approved: Project Director

Date 06 JAN, 2012	Checked ERG
----------------------	----------------

E1 1.0.1
Dwg. X of X

 Department of
Veterans Affairs

FULLY SPRINKLERED