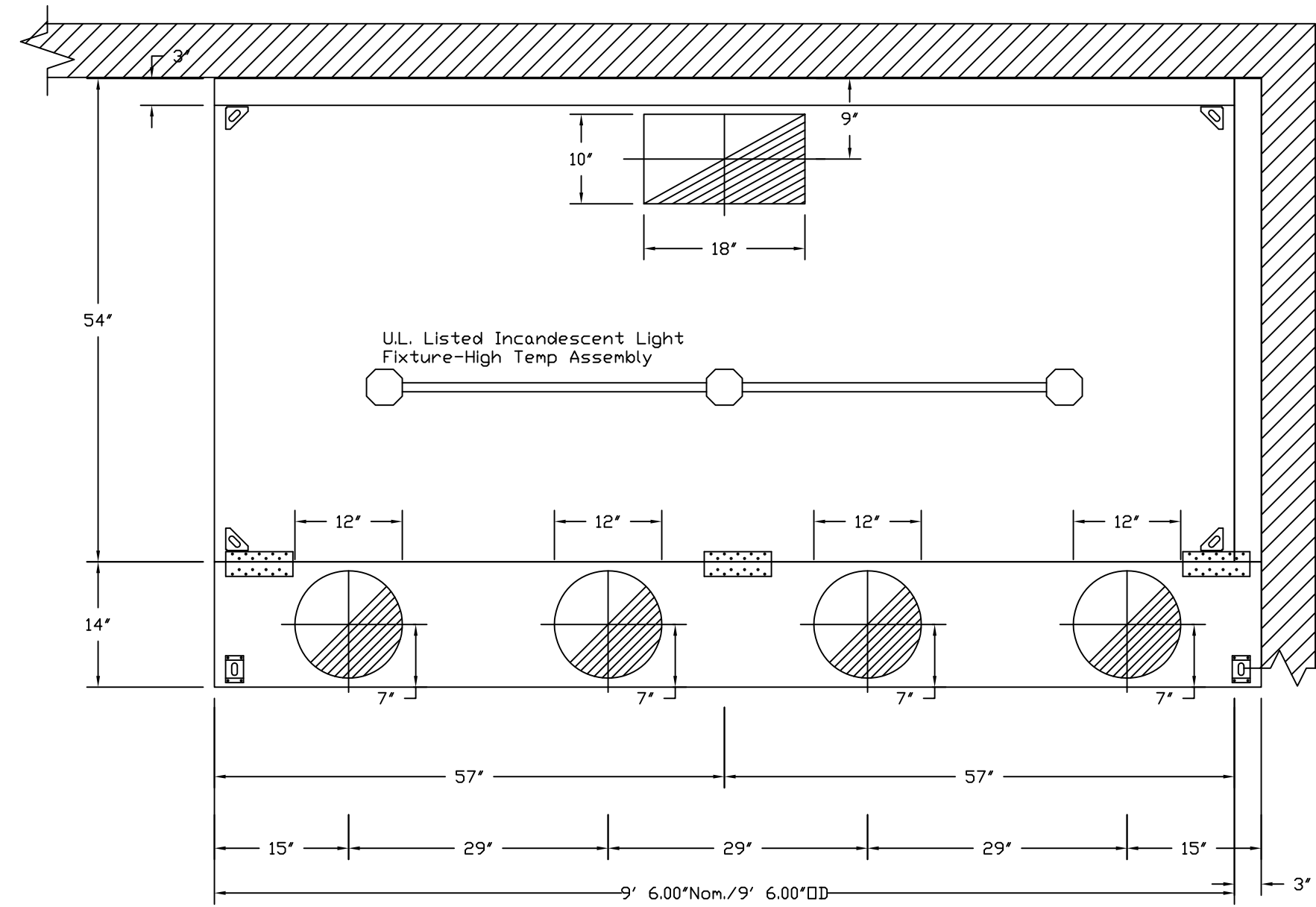
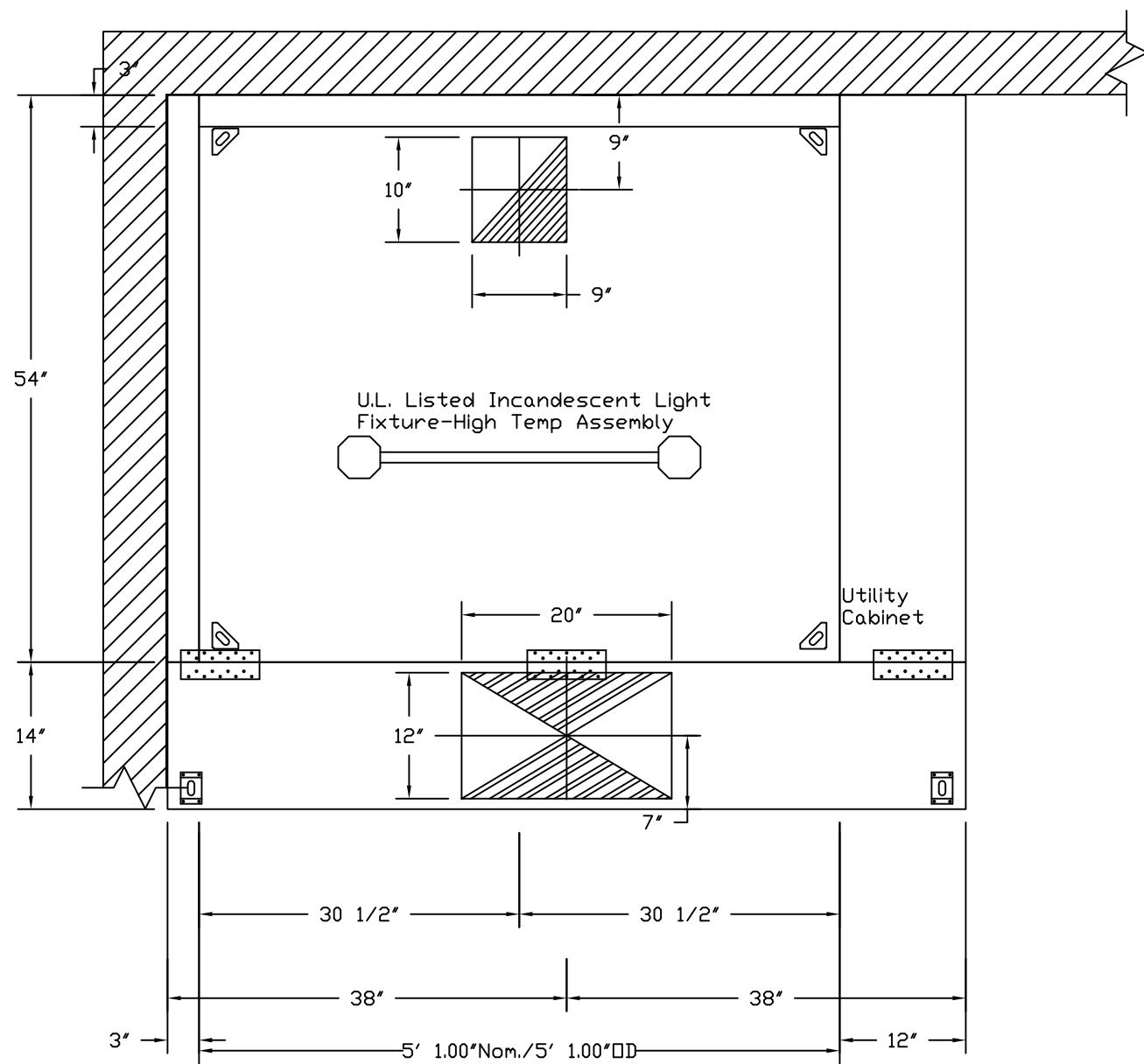


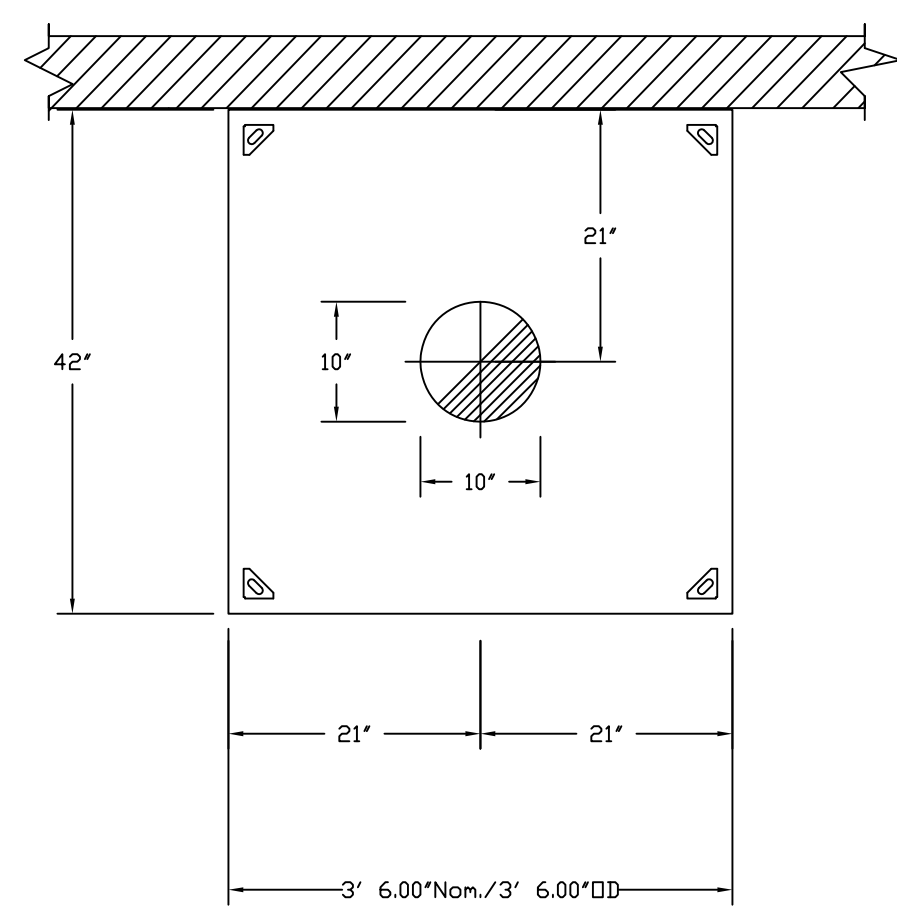
one eighth inch = one foot
one quarter inch = one foot
three eighths inch = one foot
one half inch = one foot
three quarters inch = one foot
one inch = one foot
one and one half inches = one foot
two inches = one foot
three inches = one foot



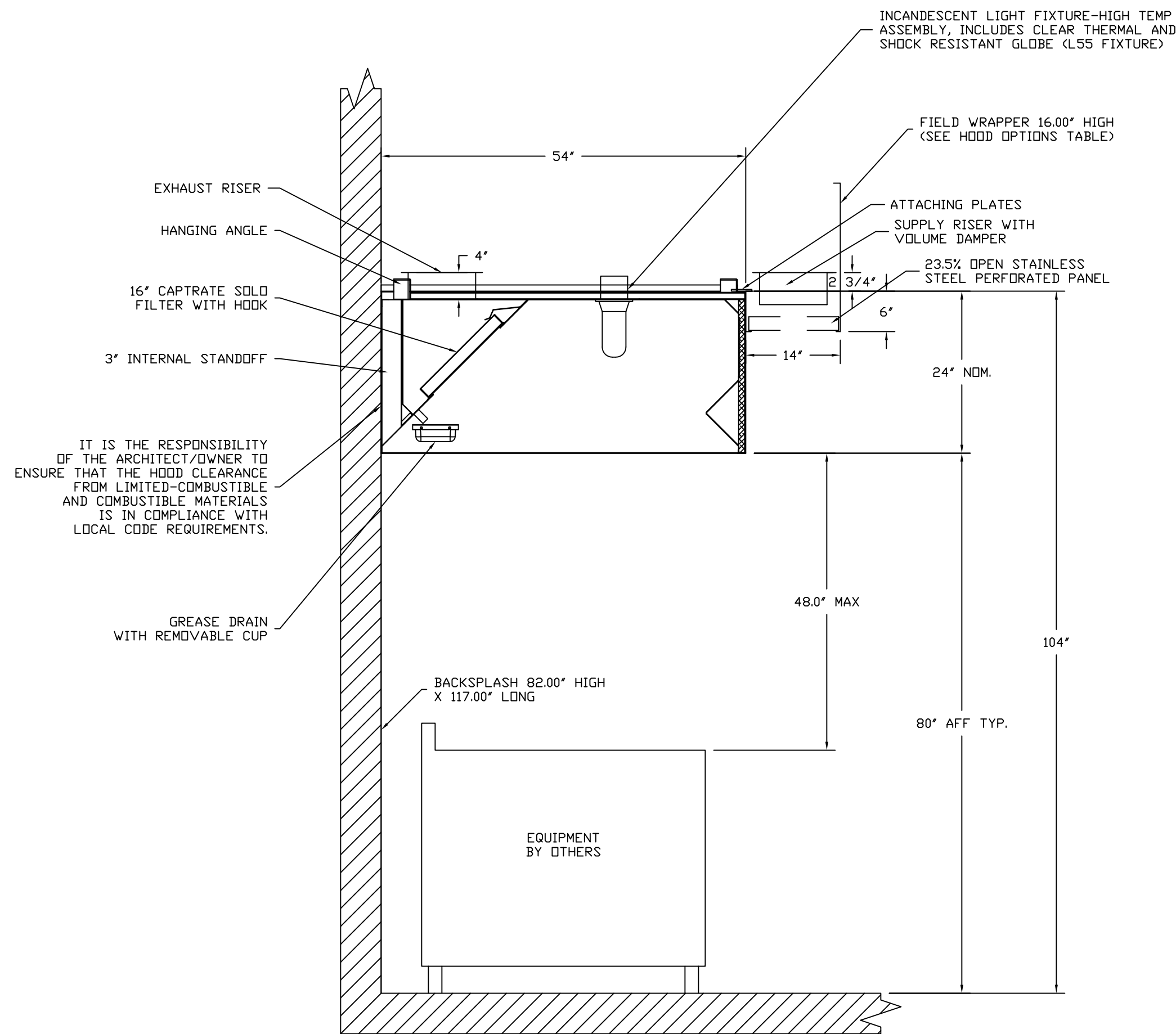
PLAN VIEW - Hood #1 (K20)
9' 6.00" LONG 5424ND-2-PSP-F



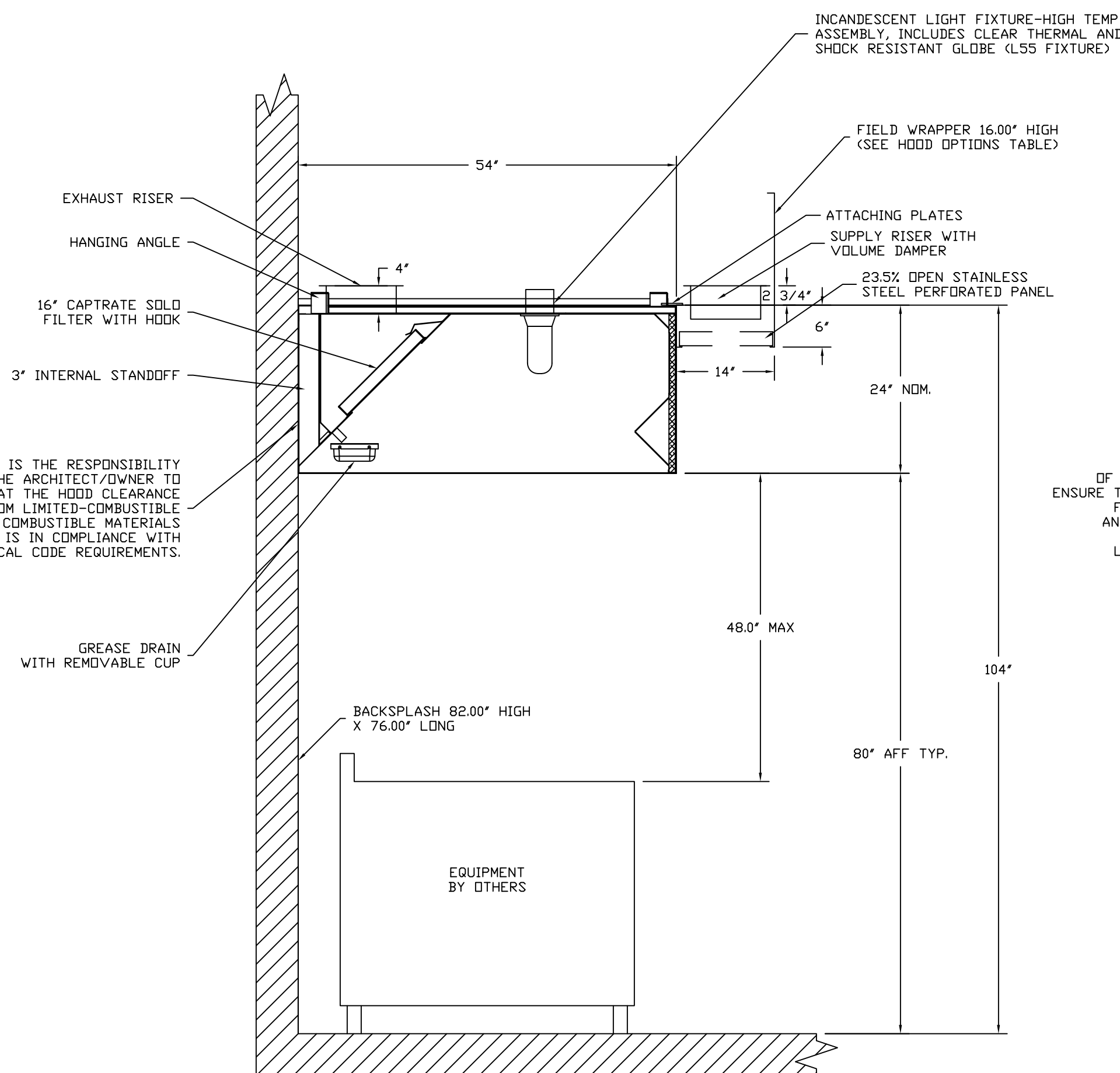
PLAN VIEW - Hood #2 (K30)
5' 1.00" LONG 5424ND-2-PSP-F



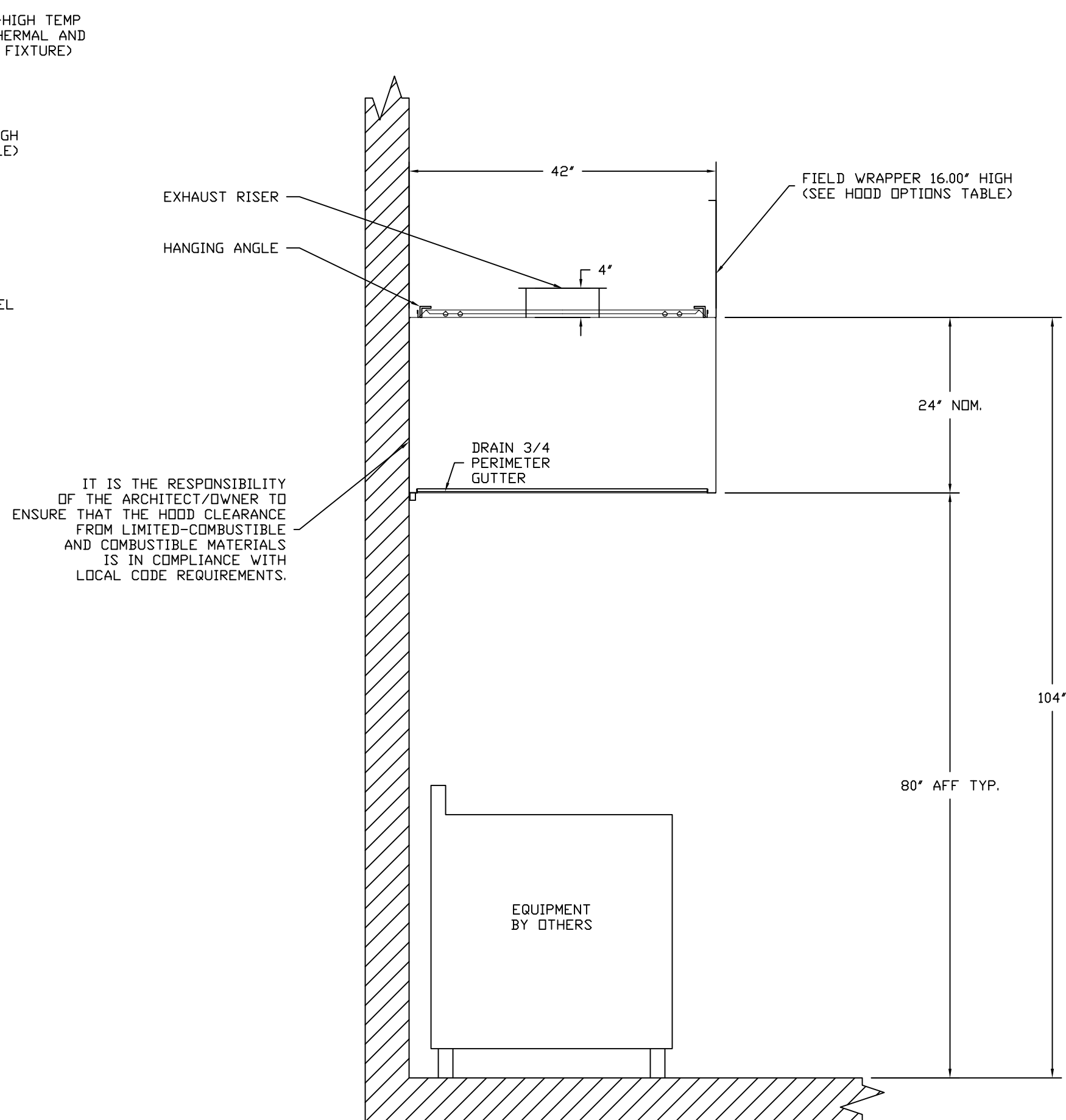
PLAN VIEW - Hood #3 (K90)
3' 6.00" LONG 4224VHB-G



SECTION VIEW - MODEL 5424ND-2-PSP-F
HOOD - #1 (K20)

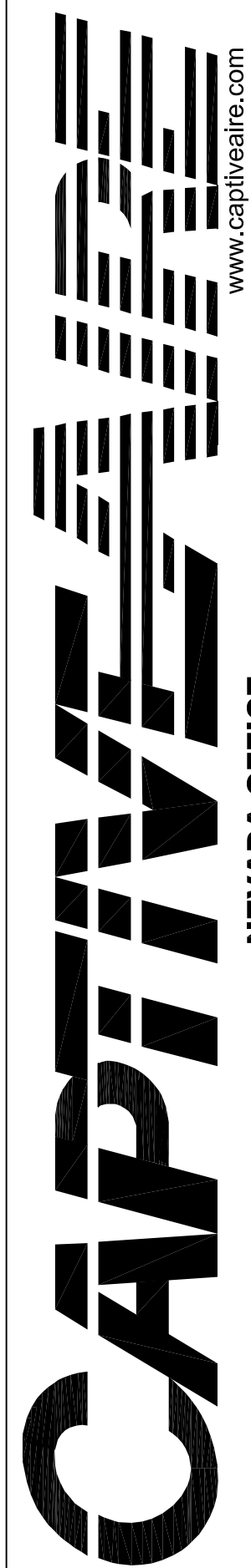


SECTION VIEW - MODEL 5424ND-2-PSP-F
HOOD - #2 (K30)



SECTION VIEW - MODEL 4224VHB-G
HOOD - #3 (K90)

REVISIONS	
DESCRIPTION	DATE



NEVADA OFFICE
7413 W. Lake Mead Blvd., Ste. 100, Las Vegas, NV 89128 PHONE: (702) 509-0455 FAX: (702) 227-5902 EMAIL: neg84@captiveare.com

VACanteen
Reno, NV

DATE: 12/13/2011

DWG.#:
1462290

DRAWN BY: DRS-84

SCALE:
N.T.S.

MASTER DRAWING

SHEET NO.
2

CONSULTANTS:



vern martin design associates
(a Nevada Corporation)
Food Facilities Design
760 Robin St., Reno, Nevada 89509
P: (775) 240-2637 F: (775) 201-0066
E:vern@martinreno.com

ARCHITECT/ENGINEERS:

VanWoert
Bigotti
architects
1400 N. Virginia St. Suite C
Reno, Nevada 89502
P: 775.328.1010
F: 775.328.1020
info@vwarchitects.com

Drawing Title
FS 4.2 VA - CANTEEN
EXHAUST HOOD DETAILS

Approved Project Director

Project Title
VA SIERRA NEVADA HEALTH CARE
SYSTEM - CANTEEN RELOCATION
DESIGN - , RENO, NEVADA

Location
975 KIRMAN AVE., RENO, NEVADA 89502

Date
ISSUE DATE:01/06/2012

Checked
J.T.

Drawn
V.M.

Project Number
654-11-227
Building Number
1

Drawing Number
FS4.2
Dwg. 7 of 12

Office of
Construction
and Facilities
Management

