

three inches = one foot  
one and one half inches = one foot  
one inch = one foot  
three quarters inch = one foot  
one half inch = one foot  
three eighths inch = one foot  
one quarter inch = one foot  
one eighth inch = one foot

1

2

3

4

5

6

7

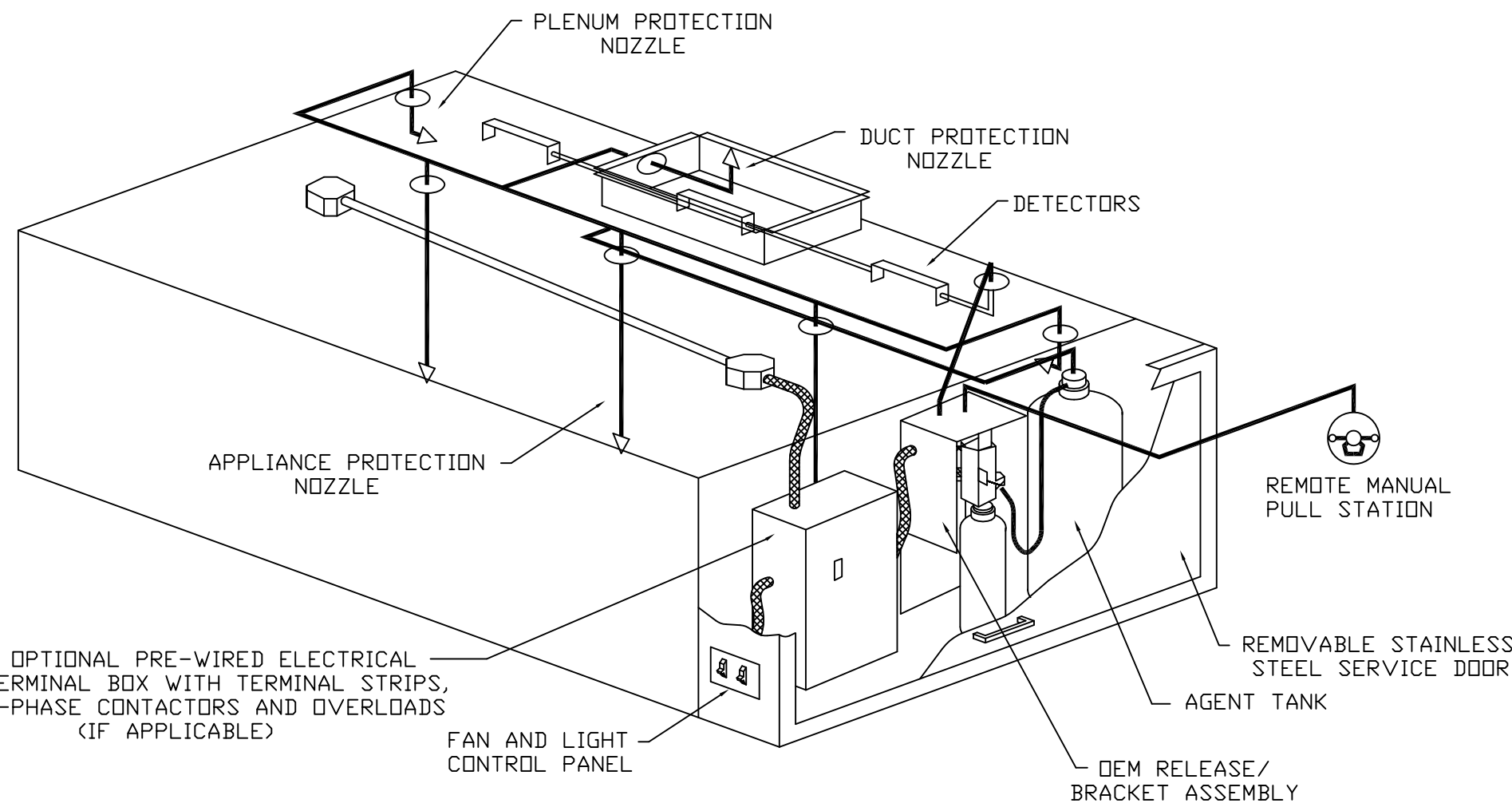
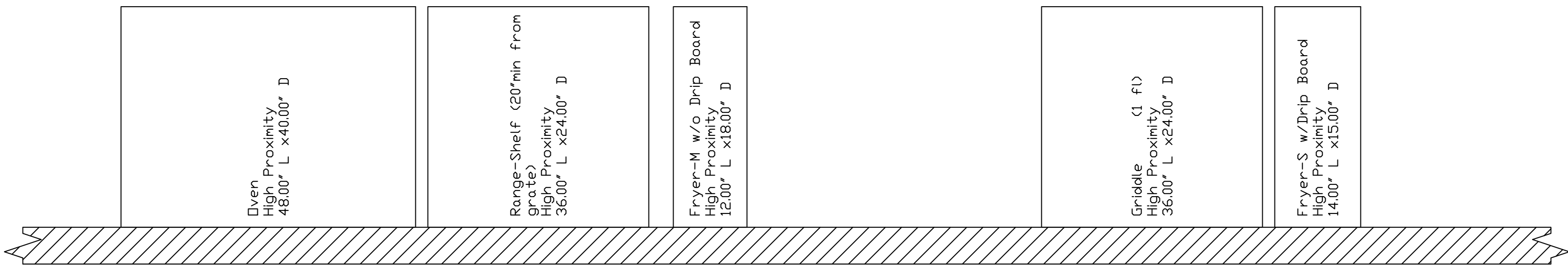
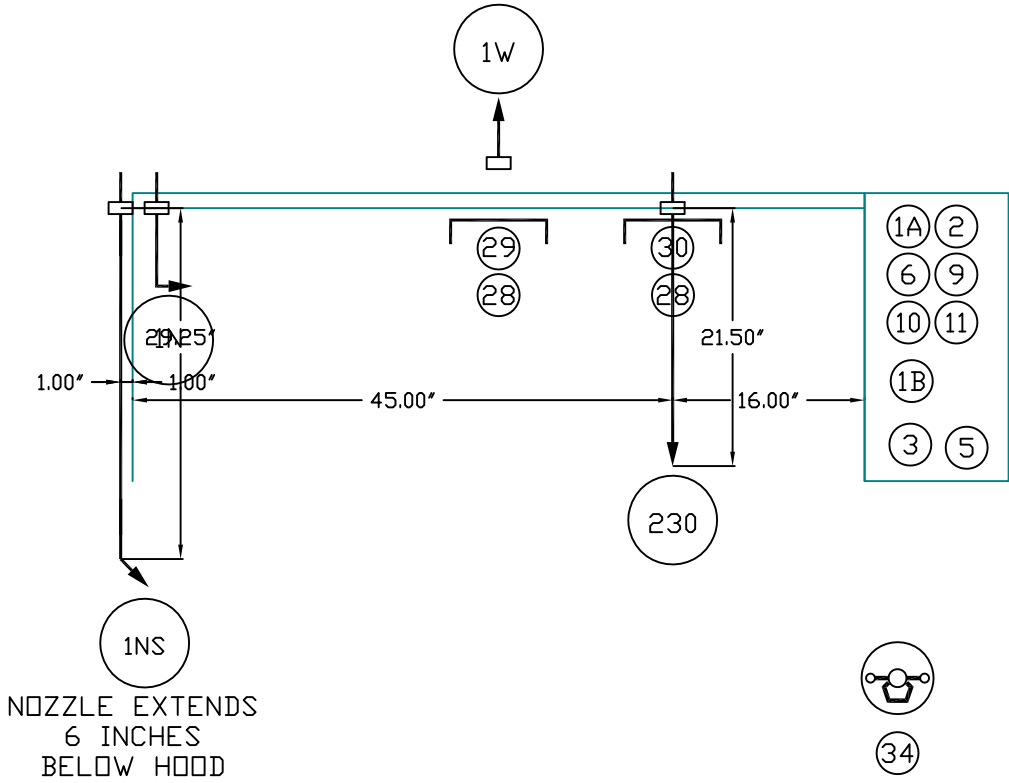
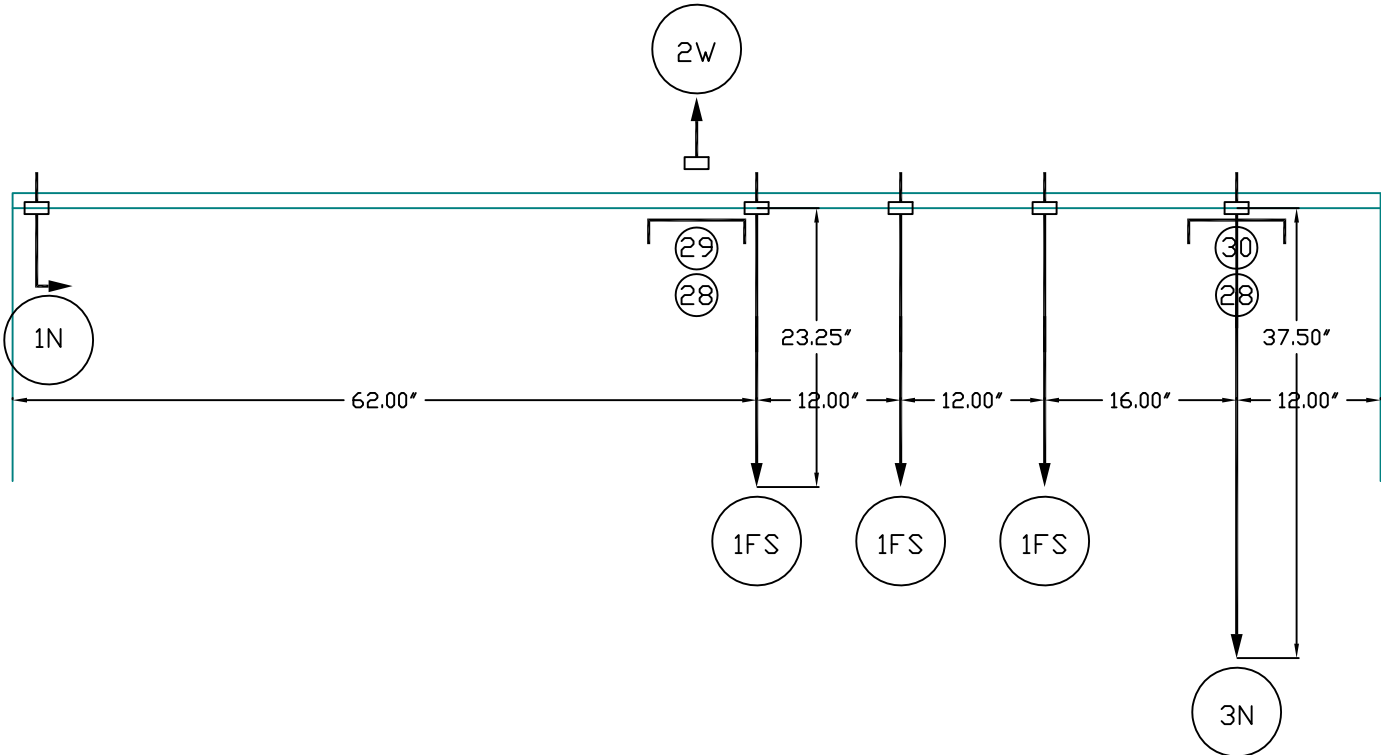
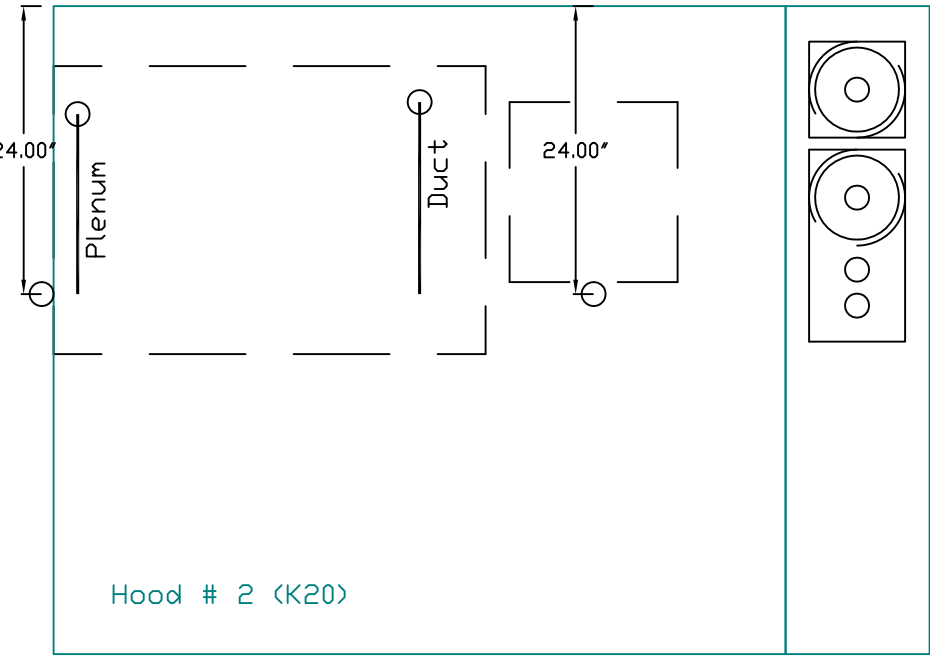
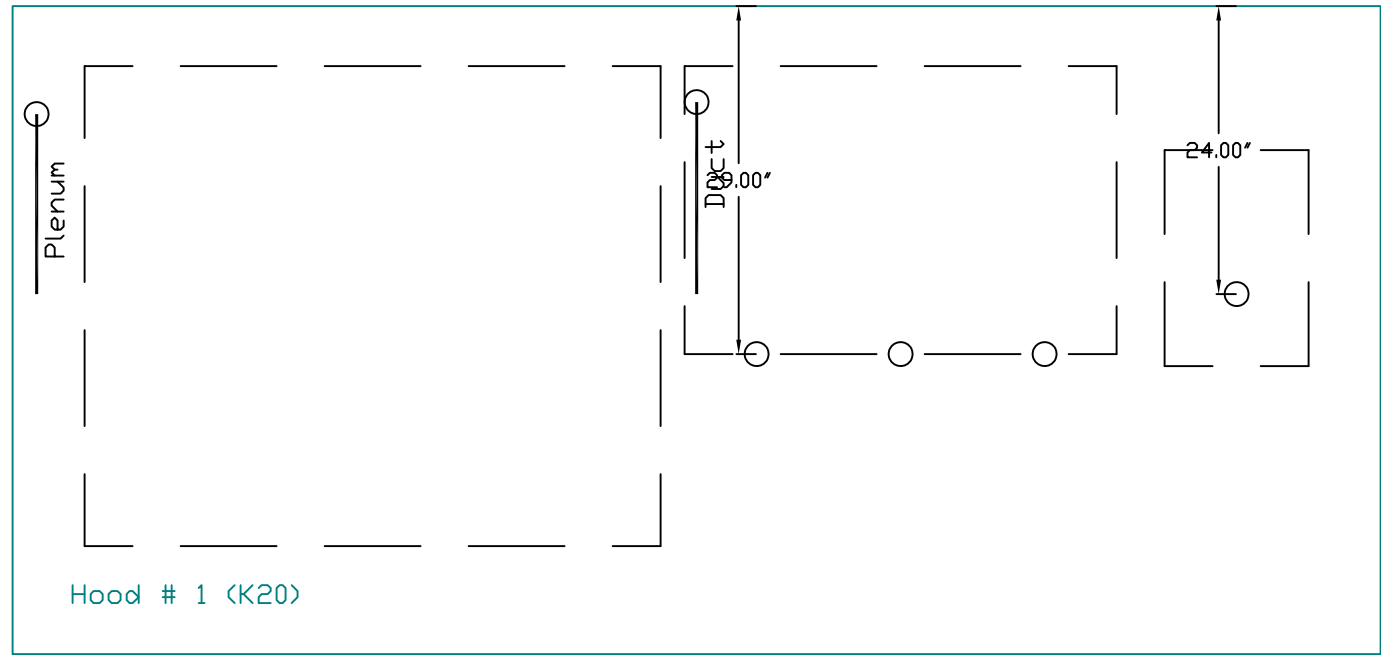
8

9

Fire System Information

FIRE SYSTEM NO.	TYPE	SIZE	FLOW POINTS	INSTALLATION	
				SYSTEM	LOCATION ON HOOD
1	Ansul R102	3.0/1.5	14	Hood Mount Right	Hood #2

Job #: 1462290  
Job Name: VACanteen  
Drawn By:  
System Size: ANSUL-3.0/1.5 Total FP required: 14  
Hood # 1 9' 6.00' Long x 54' Wide x 24' High  
Riser # 1 Size: 10' x 18'  
Hood # 2 5' 1.00' Long x 54' Wide x 24' High  
Riser # 1 Size: 10' x 9'



TYPICAL ANSUL R-102 SYSTEM LAYOUT

- NOTES
- FIELD PIPE DROPS AS SHOWN
  - SLEEVING, ELBOWS, TEES, AND NOZZLES SUPPLIED BY CAS
  - RELOCATE NOZZLES IF FLOW PATTERN IS BLOCKED BY SHELVING, SALAMANDERS, ETC.
  - MAXIMUM 9 ELBOWS IN SUPPLY LINE.
  - MINIMUM 72 INCHES OF AGENT LINE FROM TANK TO FIRST NOZZLE.
  - IF APPLICABLE, PRE-PIPED CHARBROILER DROPS ARE SHIPPED LOOSE.
  - FACTORY PIPING EXTENDS A MAXIMUM OF 6" ABOVE THE TOP OF THE HOOD.
  - APPLIANCE DIMENSIONS LISTED REPRESENT THE COOKING SURFACE SIZE, NOT THE OVERALL APPLIANCE SIZE.
  - THIS FIRE SYSTEM COMPLIES WITH U.L. 300 REQUIREMENTS

Job #: 1462290  
Job Name: VACanteen  
Drawn By:  
System Size: ANSUL-3.0/1.5 Total FP required: 14  
Hood # 1 9' 6.00' Long x 54' Wide x 24' High  
Riser # 1 Size: 10' x 18'  
Hood # 2 5' 1.00' Long x 54' Wide x 24' High  
Riser # 1 Size: 10' x 9'

LEGEND - WALL MOUNTED ANSUL SYSTEM

- 1A 1.5 GALLON TANK
- 1B 3.0 GALLON TANK
- 2 AUTOMAN RELEASE
- 3 3 GALLON TANK ENCLOSURE
- 3A 6 GALLON TANK ENCLOSURE
- 4 REGULATED ACTUATOR
- 5 ANSULEX LIQUID AGENT (3 GAL.)
- 6 ANSULEX LIQUID AGENT (1.5 GAL.)
- 7 CARTRIDGE (101-20)
- 8 CARTRIDGE (101-10)
- 9 CARTRIDGE (101-30)
- 9A CARTRIDGE (LT-A-101-30)
- 9B DOUBLE TANK CARTRIDGE
- 10 TEST LINK
- 11 DOUBLE MICROSWITCH
- 2W DUCT NOZZLE (419337)
- 1W NOZZLE ASSEMBLY (419336)
- 1F NOZZLE ASSEMBLY (419333)
- 1N NOZZLE ASSEMBLY (419335)
- 1/2N NOZZLE ASSEMBLY (419334)
- 3N NOZZLE ASSEMBLY (419338)
- 245 NOZZLE ASSEMBLY (419340)
- 230 NOZZLE ASSEMBLY (419339)
- 2120 NOZZLE ASSEMBLY (419343)
- 290 NOZZLE ASSEMBLY (419342)
- 260 NOZZLE ASSEMBLY (419341)
- 28 DETECTOR BRACKET
- 29 LOW TEMP FUSIBLE LINK
- 30 HIGH TEMP FUSIBLE LINK
- MGV MECHANICAL GAS VALVE
- EGV ELECTRICAL GAS VALVE
- 34 REMOTE MANUAL PULL STATION
- S SWIVEL ADAPTOR

REVISIONS	
DESCRIPTION	DATE

**CAPTIVE**

www.captivefire.com

NEVADA OFFICE

7473 W. Lake Mead Blvd., Ste. 100, Las Vegas, NV 89129 PHONE: (702) 598-9455 FAX: (702) 227-5902 EMAIL: reg84@captivefire.com

VACanteen  
Reno, NV

DATE: 12/13/2011

DWG.#:  
1462290

DRAWN BY: DRS-84

SCALE: N.T.S.

MASTER DRAWING

SHEET NO.  
3

CONSULTANTS:



vern martin design associates  
(a Nevada Corporation)  
Food Facilities Design  
760 Robin St., Reno, Nevada 89509  
P: (775) 240-2637 F: (775) 201-0066  
E:vern@martinreno.com

ARCHITECT/ENGINEERS:

**VanWoert Bigotti**  
architects

1400 N. Virginia St. Suite C  
Reno, Nevada 89502  
P: 775.328.1010  
F: 775.328.1020  
info@vwarchitects.com

Drawing Title  
FS 4.3 VA - CANTEEN  
EXHAUST HOOD FIRE  
SYSTEM DETAILS

Approved Project Director

Project Title  
VA SIERRA NEVADA HEALTH CARE  
SYSTEM - CANTEEN RELOCATION  
DESIGN - , RENO, NEVADA

Location  
975 KIRMAN AVE, RENO, NEVADA 89502

Date  
ISSUE DATE 01/06/2012

Checked  
J.T.

Drawn  
V.M.

Project Number  
654-11-227  
Building Number  
1

Drawing Number  
FS4.3  
Dwg. 8 of 12

Office of  
Construction  
and Facilities  
Management



1

2

3

4

5

6

7

8

9