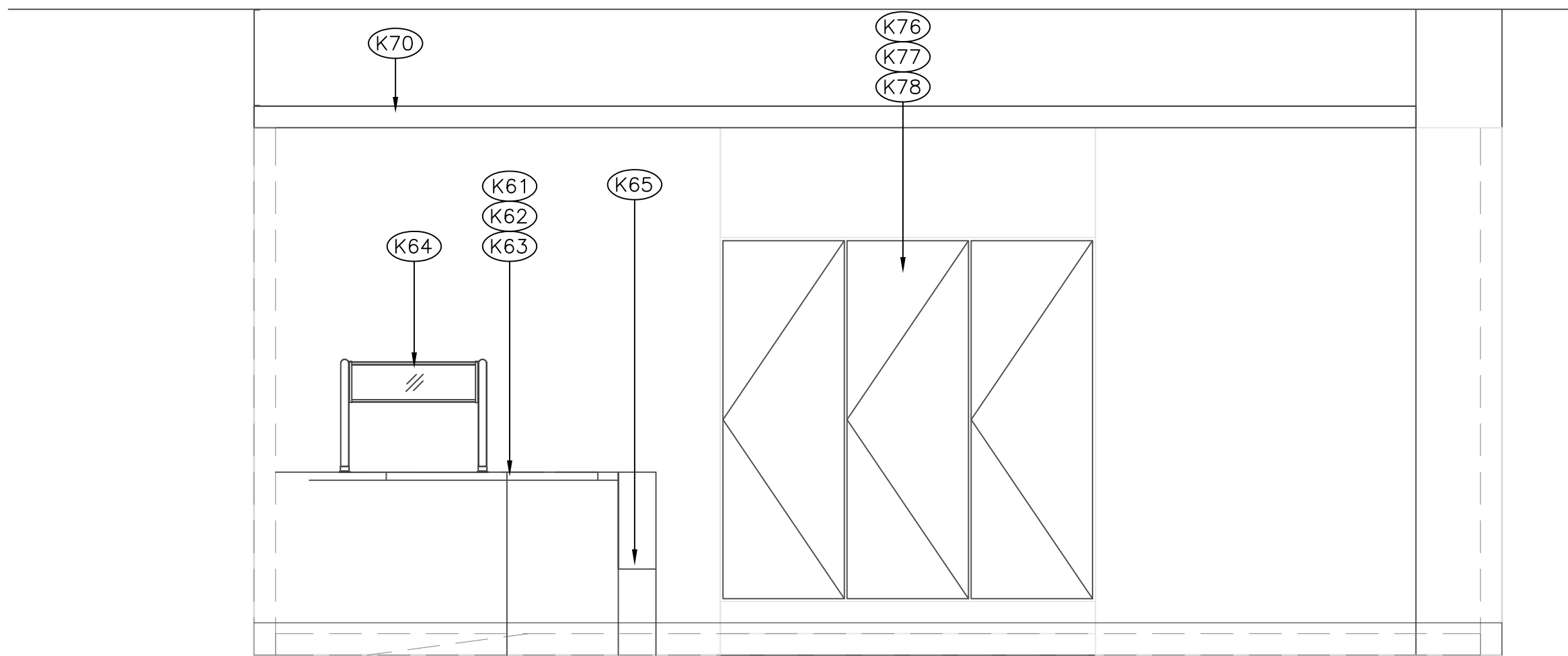
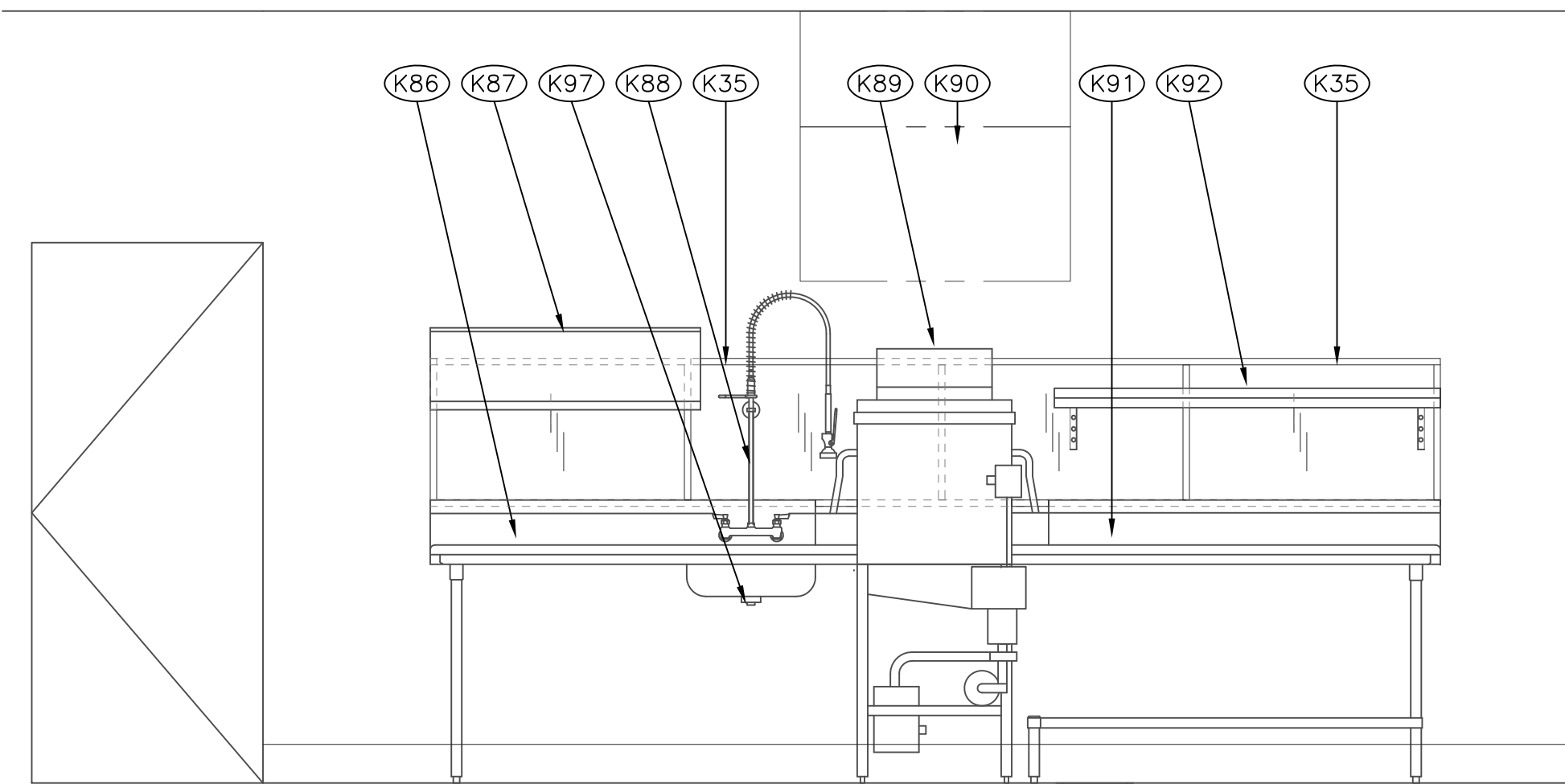


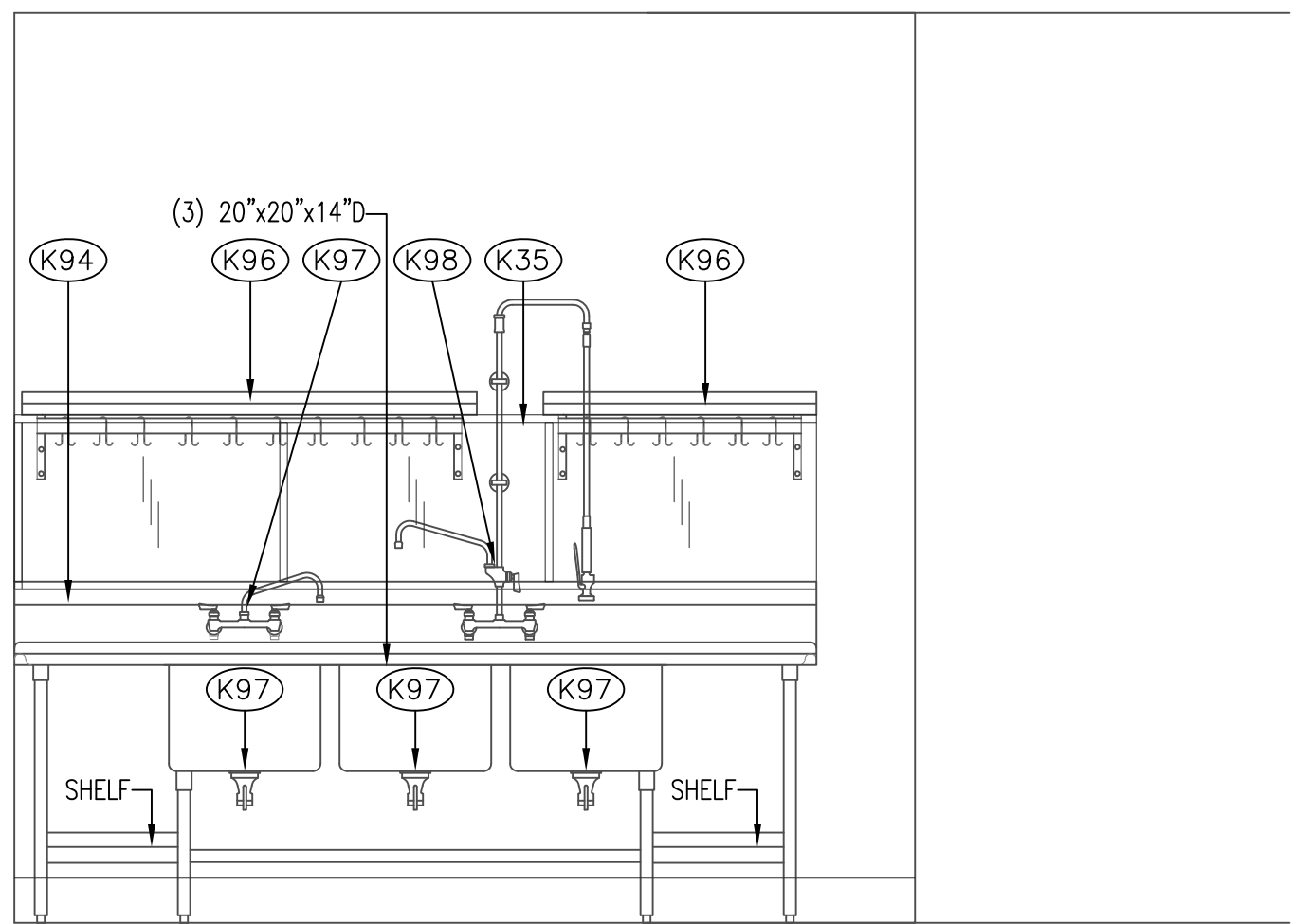
three inches = one foot
one and one half inches = one foot
one inch = one foot
three quarters inch = one foot
one half inch = one foot
three eighths inch = one foot
one quarter inch = one foot
one eighth inch = one foot



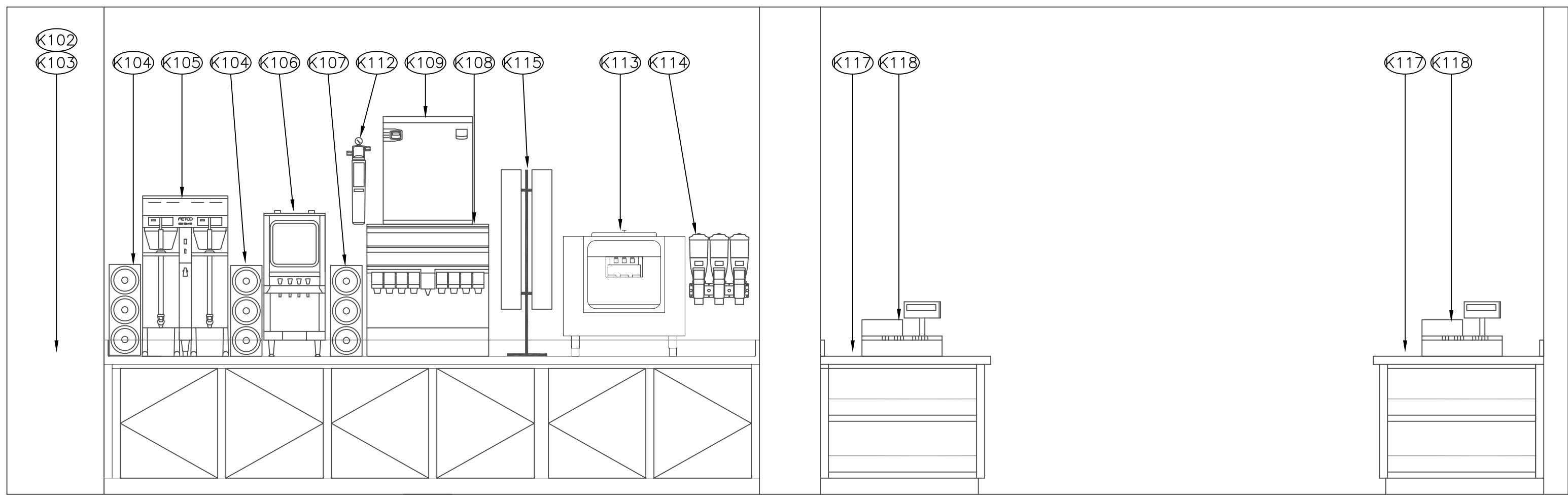
ELEVATION N - SOUP STATION AND WALK-IN GRAB & GO DOORS



ELEVATION P - DISWASHING AREA

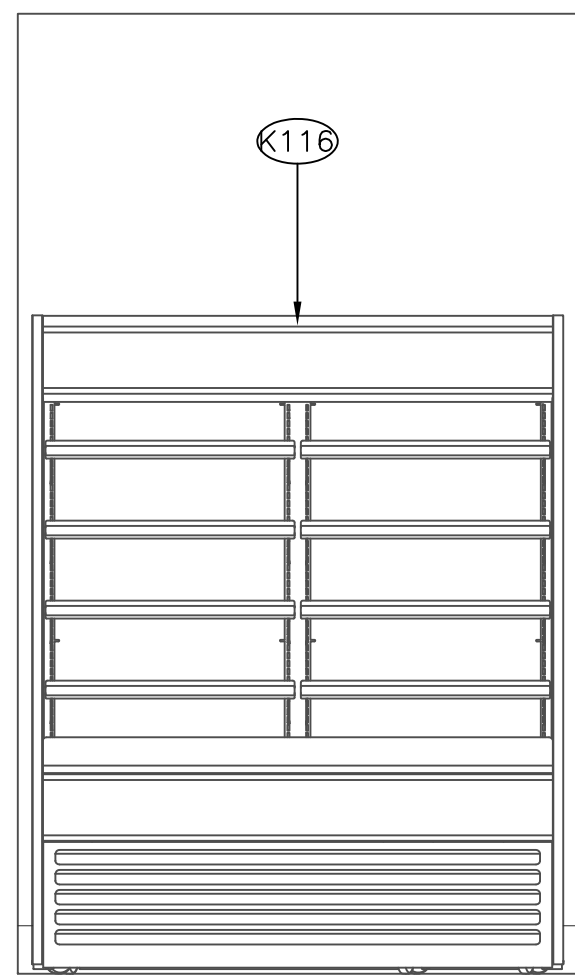


ELEVATION R - POT & PAN WASHING AREA

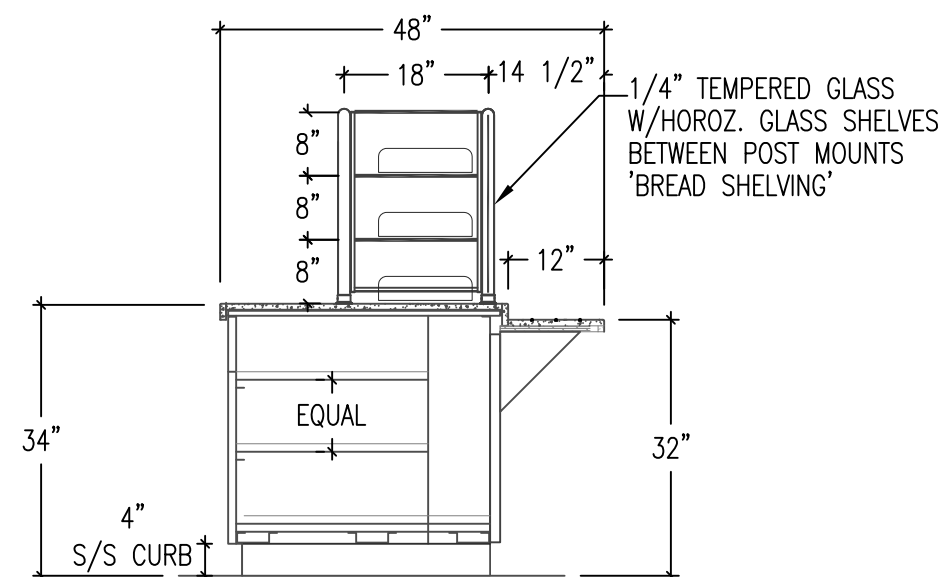


ELEVATION S - BEVERAGE COUNTER

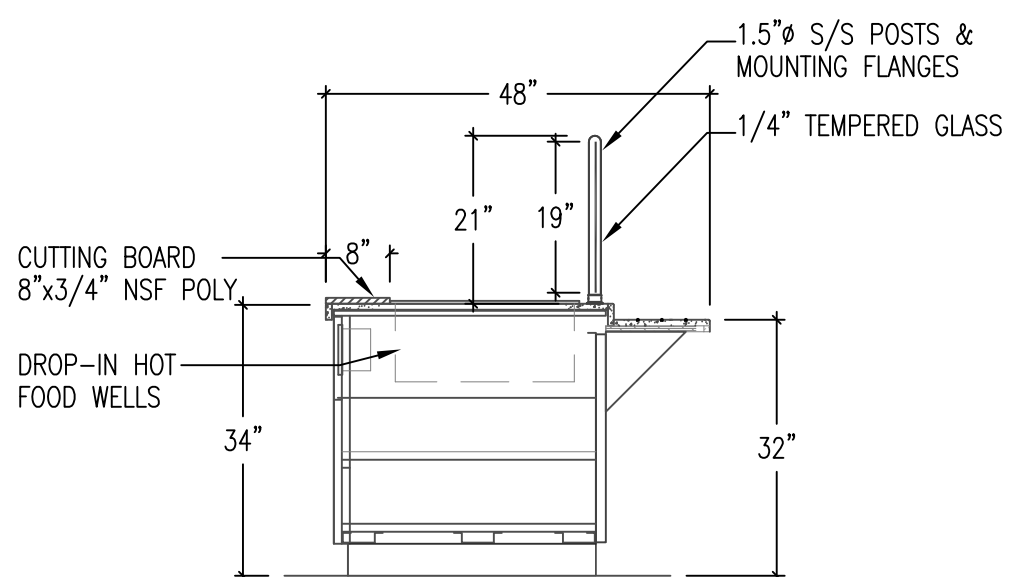
ELEVATION T - P.O.S. STATIONS



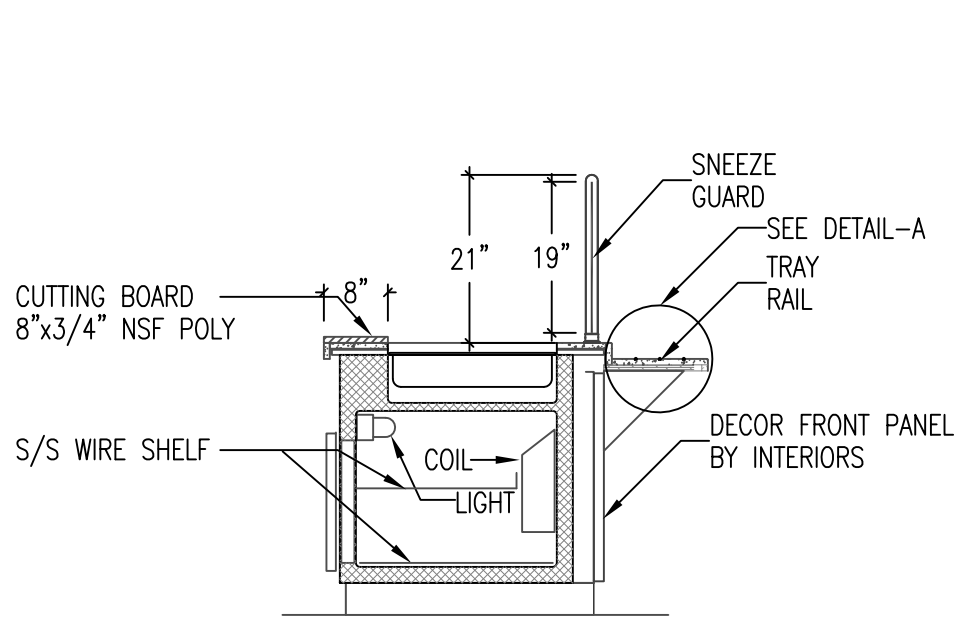
ELEVATION U - GRAB & GO CASE



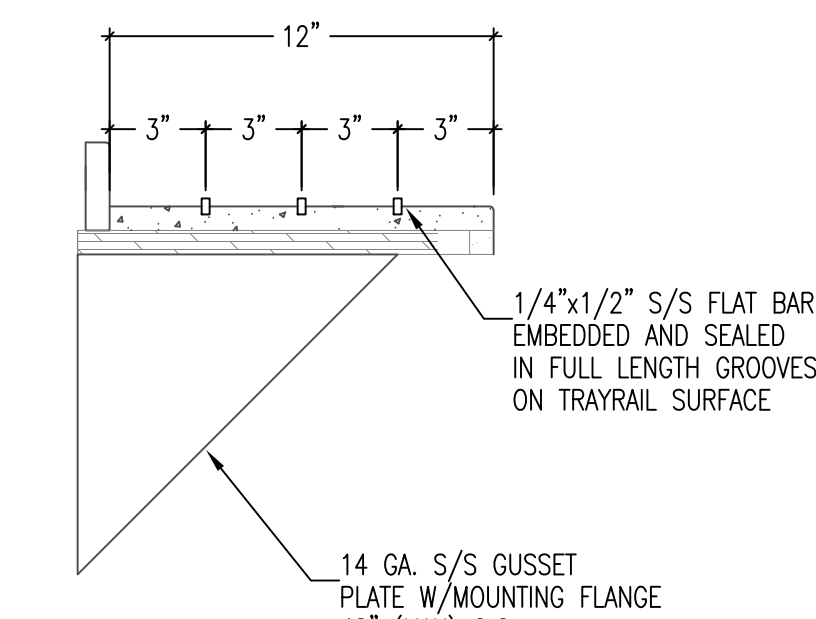
SECTION - 1 SERVING COUNTER BREAD DISPLAY





SECTION - 2 SERVING COUNTER HOT WELLS



SECTION - 3 SERVING COUNTER REFRIGERATED TOP & BASE



DETAIL-A TRAY RAIL

ADDED SECTION AND DETAIL VIEWS		02/01/2012	CONSULTANTS:		ARCHITECT/ENGINEERS:		Drawing Title		Project Title		Project Number		Office of Construction and Facilities Management Department of Veterans Affairs	
			 vern martin design associates (a Nevada Corporation) Food Facilities Design 760 Robin St., Reno, Nevada 89509 P: (775) 240-2637 F: (775) 201-0066 E: vern@martinreno.com		 1400 N. Virginia St. Suite C reno, nevada 89502 p: 775.328.1010 f: 775.328.1020 info@vwarchitects.com		FS 7.1 VA - CANTEN FOODSERVICE EQUIPMENT ELEVATIONS AND DETAILS		VA SIERRA NEVADA HEALTH CARE SYSTEM - CANTEN RELOCATION DESIGN - , RENO, NEVADA		654-11-227			
							Approved Project Director		Location 975 KIRMAN AVE, RENO, NEVADA 89502		Building Number 1			
Revisions:		Date					Date		Checked J.T.		Drawn V.M.			
											Drawing Number FS7.1		Dwg. 12 of 12	