

SEQUENCE OF CONTROL

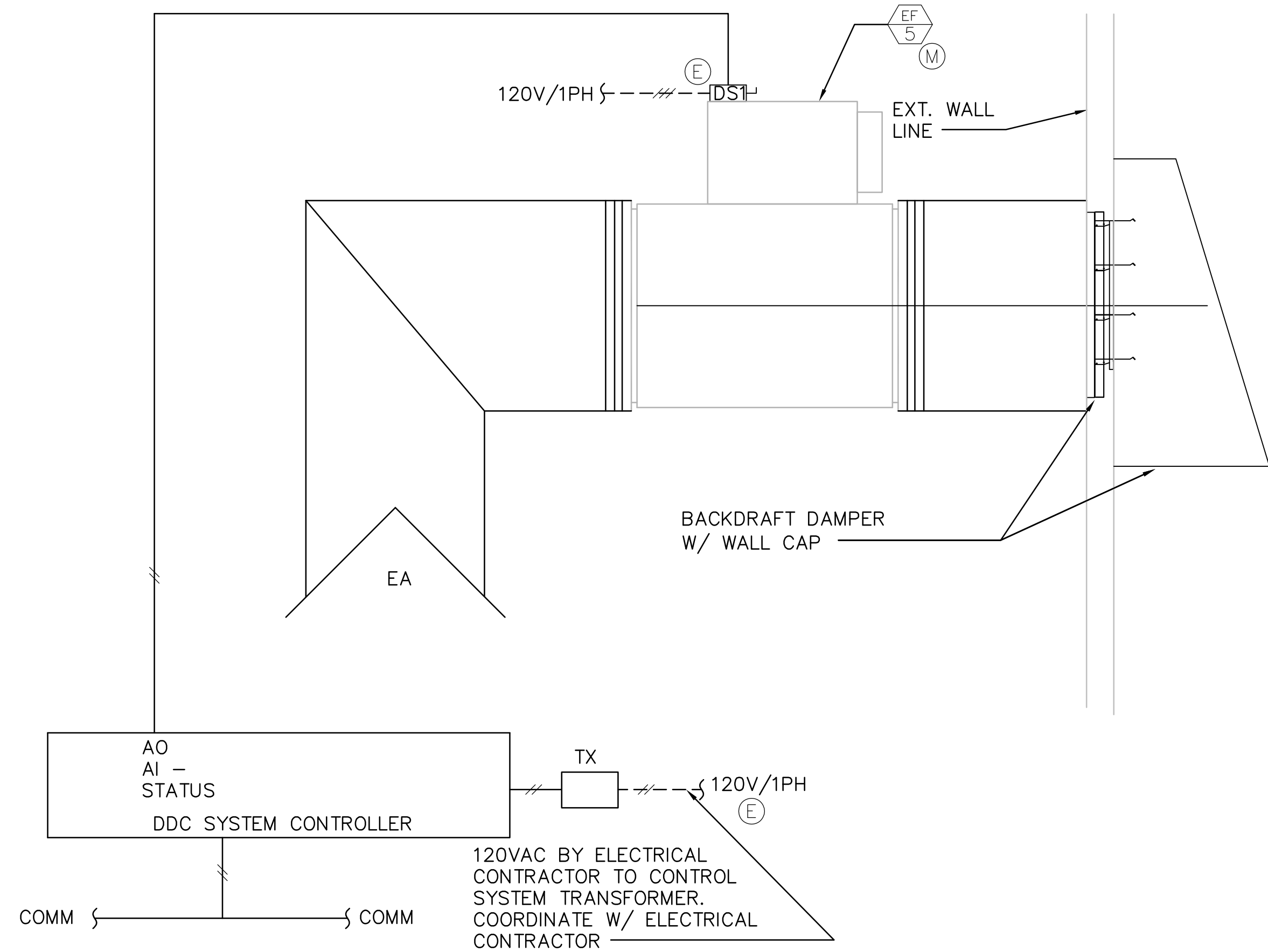
NORMAL MODE:

- ON A DEMAND FOR EITHER HEATING OR COOLING FROM THE ROOM T'STAT ON ANY FC UNIT, FC UNIT AND MATCHING HEAT PUMP CU UNIT IS ENERGIZED.
- ROOM TEMPERATURE SENSOR THRU DDC CONTROLLER CYCLES THE HEAT PUMP CONDENSING UNIT AND FAN COIL UNIT TO MAINTAIN SETPOINT.
- WHENEVER SYSTEM CANNOT MAINTAIN HEATING SETPOINT OF 72 DEG-F (ADJ.) OR OSA TEMP. FALLS BELOW 39 DEG-F, ELECTRIC HEATING ELEMENT IN FC IS ENERGIZED.

SAFETY CONTROL

- ALARM IS PROVIDED THRU DDC CONTROLLER IF THE ROOM TEMPERATURE RISES ABOVE 75 DEG-F (ADJ.) OF FALLS BELOW 68 DEG-F (ADJ.).

1 FC-1/HP-1 & FC-2/HP-2 CONTROL DIAGRAM
SCALE: NONE



CONTROL SEQUENCE

EXHAUST FAN OPERATION:

INLINE MOUNTED EXHAUST FAN SHALL BE INTERLOCKED WITH EXISTING AIR HANDLER AHU-5 TO OPERATE WHENEVER AHU-5 OPERATES.

2 EXHAUST FANS EF-5 CONTROL DIAGRAM
SCALE: NONE

Revisions:		Date		CONSULTANTS:		ARCHITECT/ENGINEERS:		Drawing Title		Project Title		Project Number		Office of Construction and Facilities Management	
				DINTER		VMDA		MECHANICAL CONTROLS (2)		VA SIERRA NEVADA HEALTH CARE SYSTEM - CANTEN RELOCATION DESIGN - , RENO, NEVADA		654-11-227		Department of Veterans Affairs	
				385 Gentry Way Reno, NV 89502 Ph: 775.826.4044 Fax: 775.826.4190 www.dinter.com J-4217.6		760 Robin St., Reno, Nevada 89509 P:(775) 240-2637 F:(775) 201-0066 E:vern@martinreno.com		Approved Project Director		Location 975 KIRMAN AVE, RENO, NEVADA 89502		Building Number 1			
										Date 06 JAN, 2012		Checked TPF		Drawn EBW	
												Drawing Number M5.2			
												Dwg. - of -			