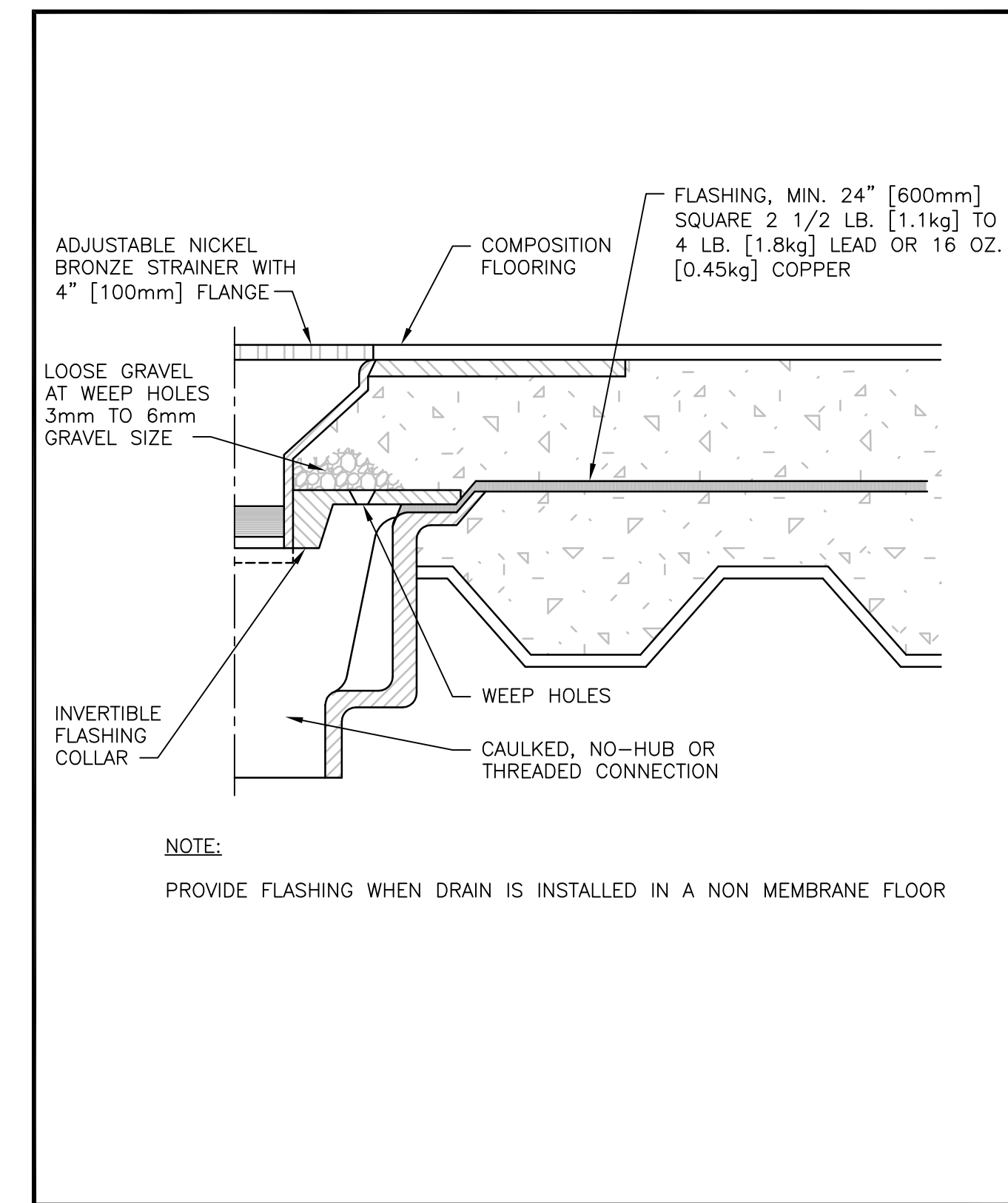
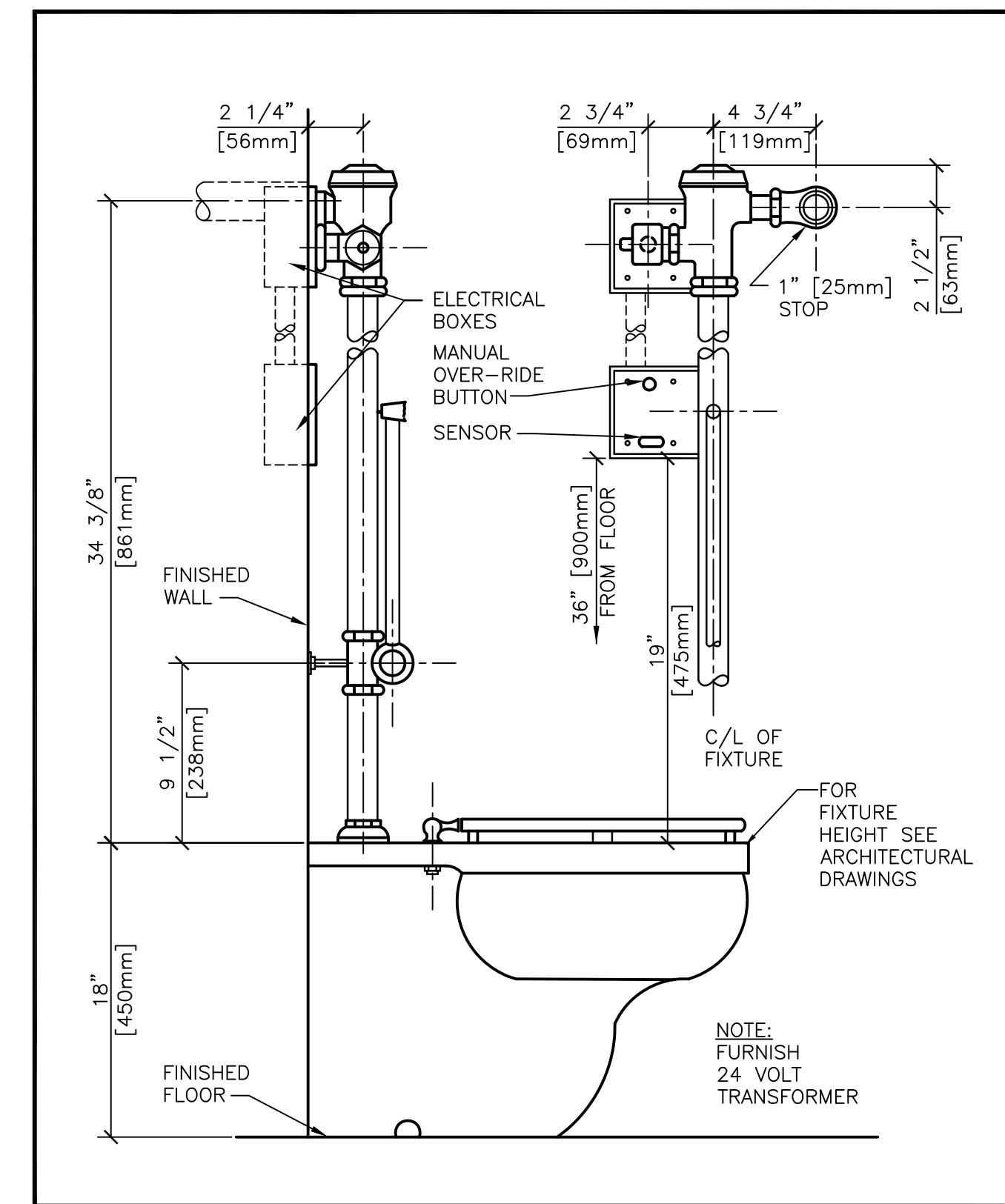


1 TYPE "C" FLOOR DRAIN/SINK DETAIL
P6.1 SCALE:NONE

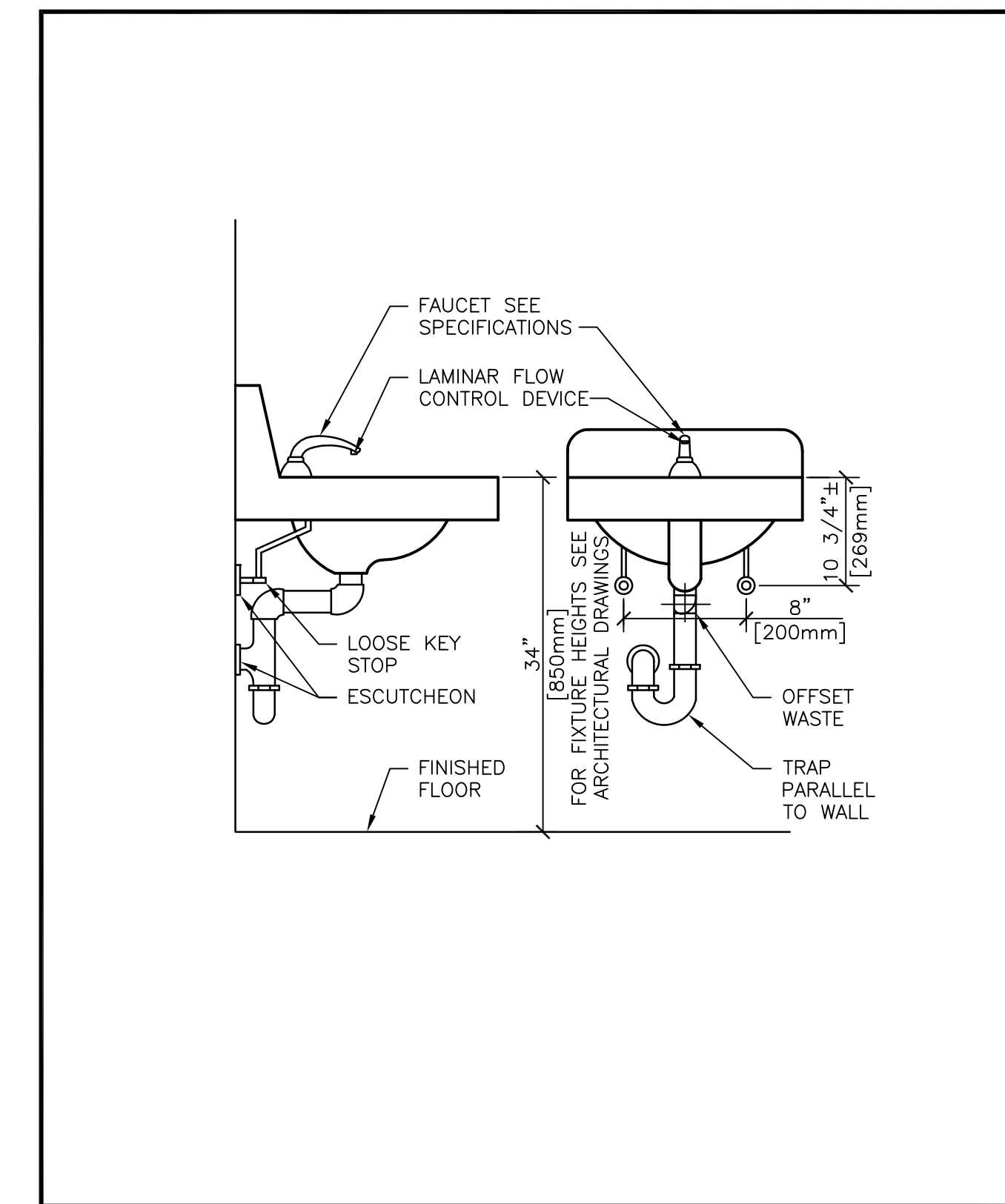


2 TYPE "D" FLOOR DRAIN/SINK DETAIL
P6.1 SCALE:NONE

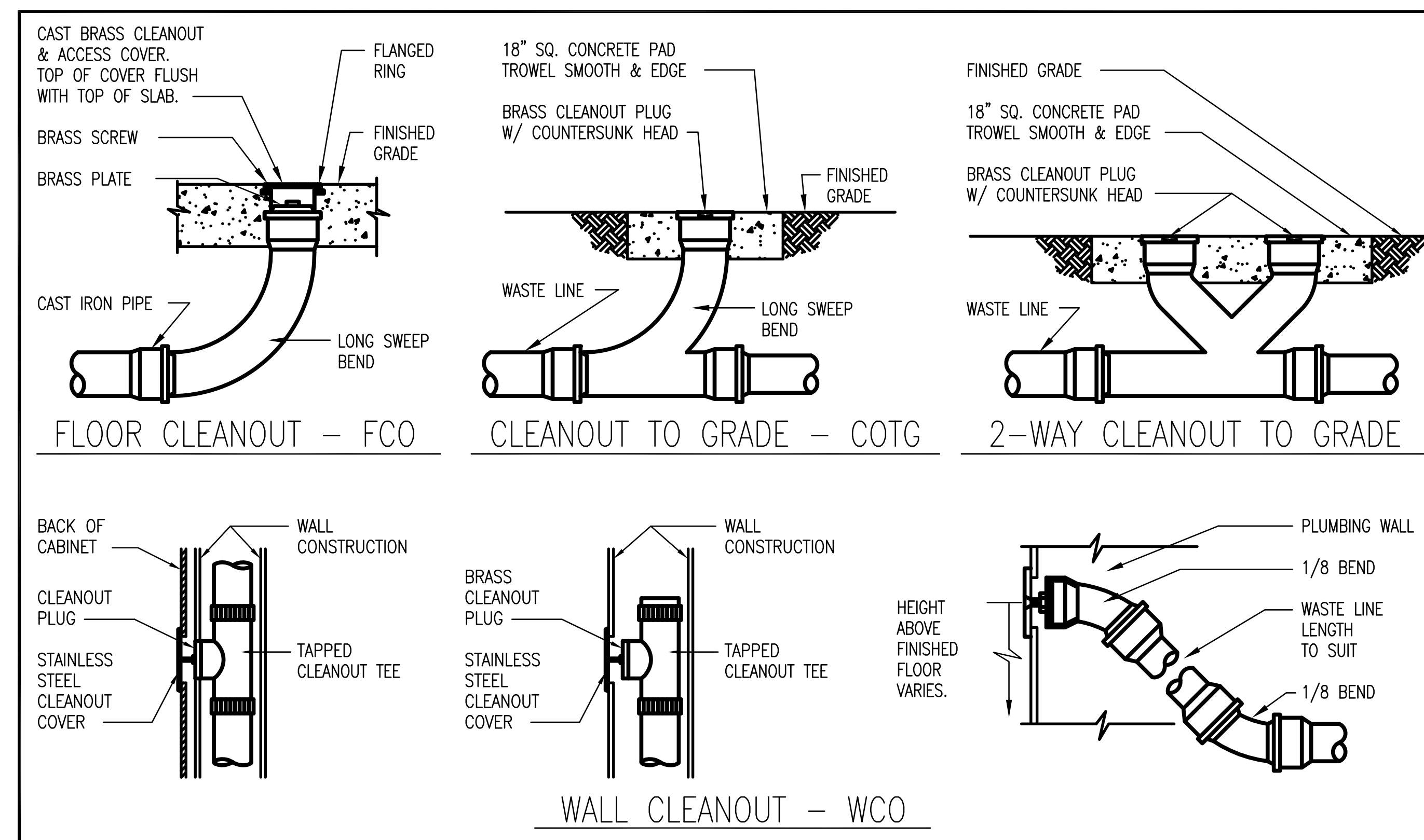


3
P6.1

SENSOR OPERATED WATER CLOSET
SCALE: NONE



4 LAVATORY INSTALLATION DETAIL (ADA)
P6.1 SCALE:NONE

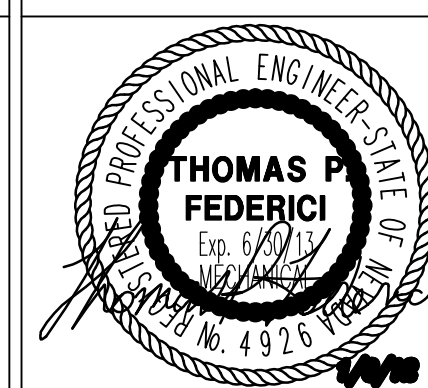
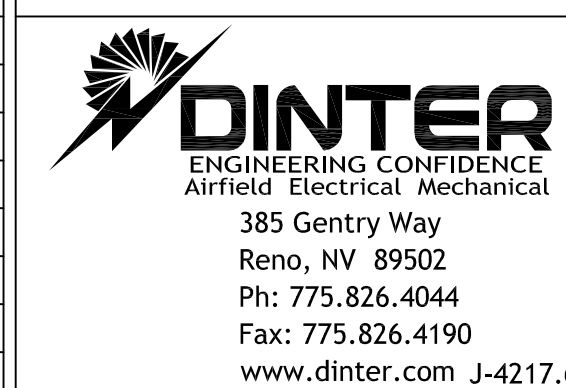


5 TYPICAL CLEANOUT DETAILS
P6.1 SCALE: NONE

CLOUT2

[illegible]

CONSULTANTS:



ARCHITECT/ENGINEERS:



| | |
|---------------|---------------------|
| Drawing Title | PLUMBING DETAILS |
|---------------|---------------------|

Approved: Project Director

| | |
|---------------|--|
| Project Title | VA SIERRA NEVADA HEALTH CARE SYSTEM - CANTEEN RELOCATION DESIGN - , RENO, NEVADA |
|---------------|--|

| | |
|----------|--------------|
| DESIGN | RENO, NEVADA |
| Location | |

Date

| | |
|---------|-----|
| Checked | TDE |
|---------|-----|

| | |
|-------|-----|
| Drawn | EDW |
|-------|-----|

| | |
|-----------------|------------|
| Project Number | 654-11-227 |
| Building Number | 1 |

| | |
|--|----------------|
| | Drawing Number |
| | P6.1 |

Office of
Construction
and Facilities
Management

