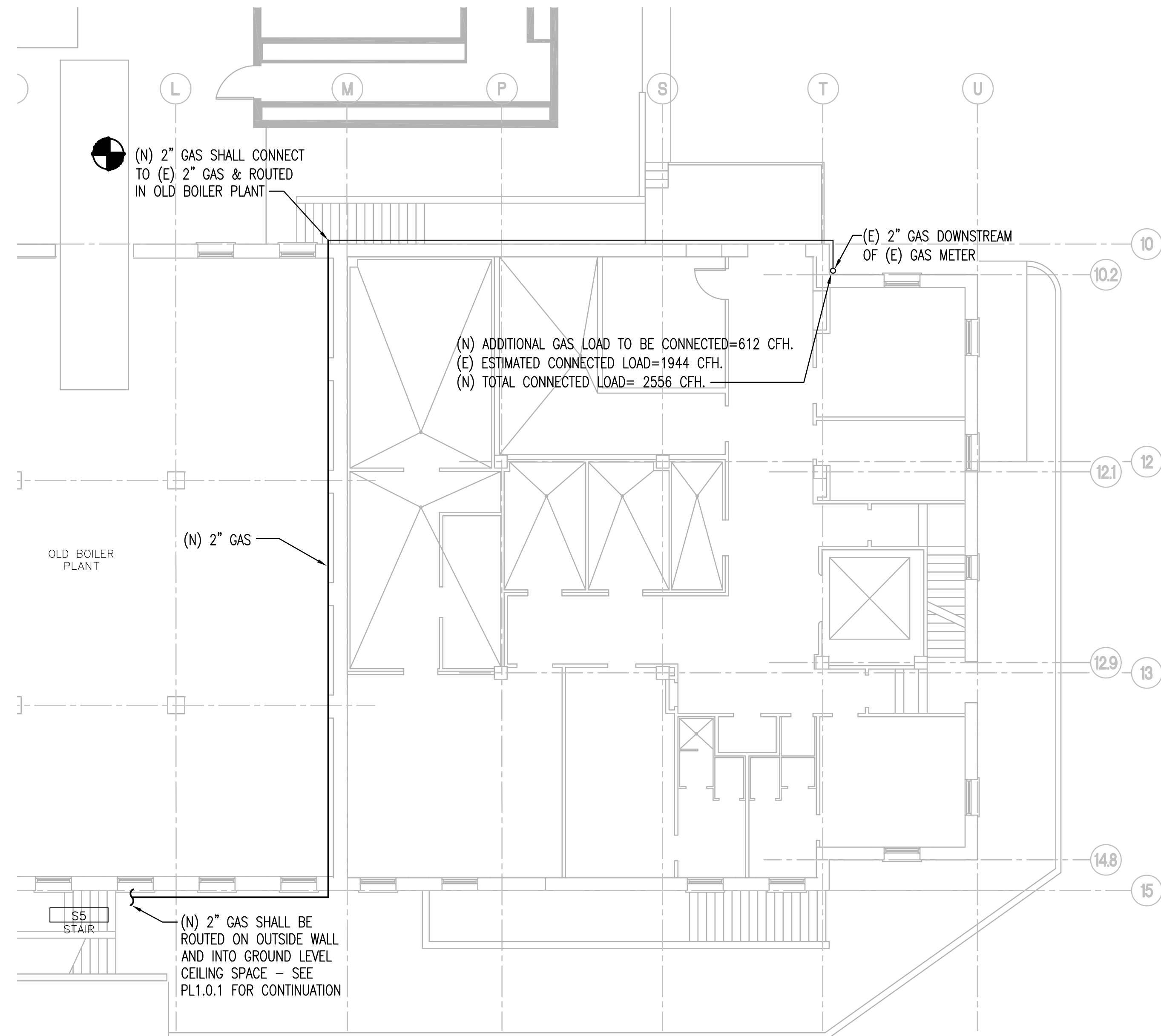
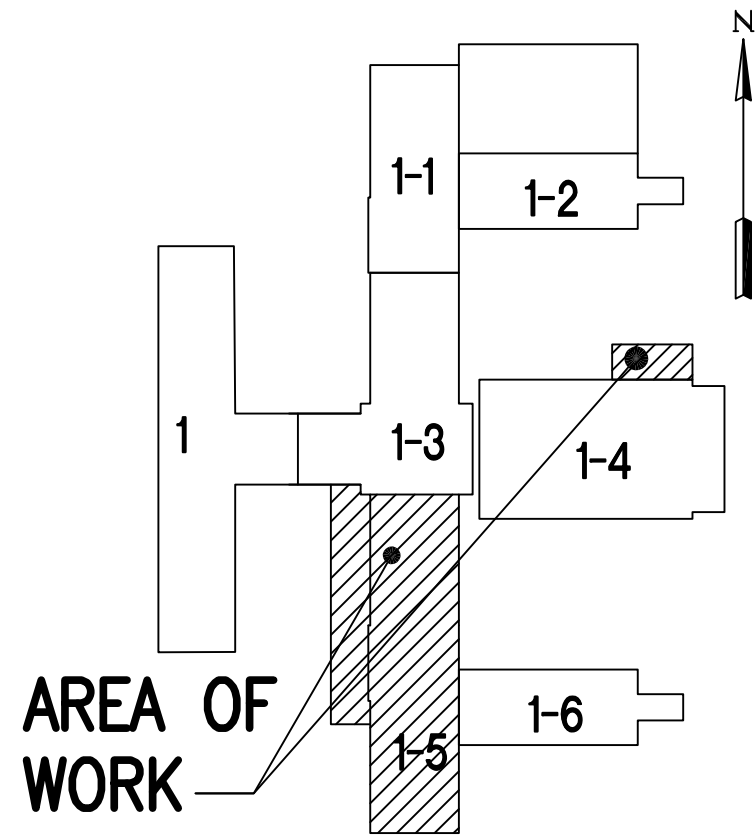
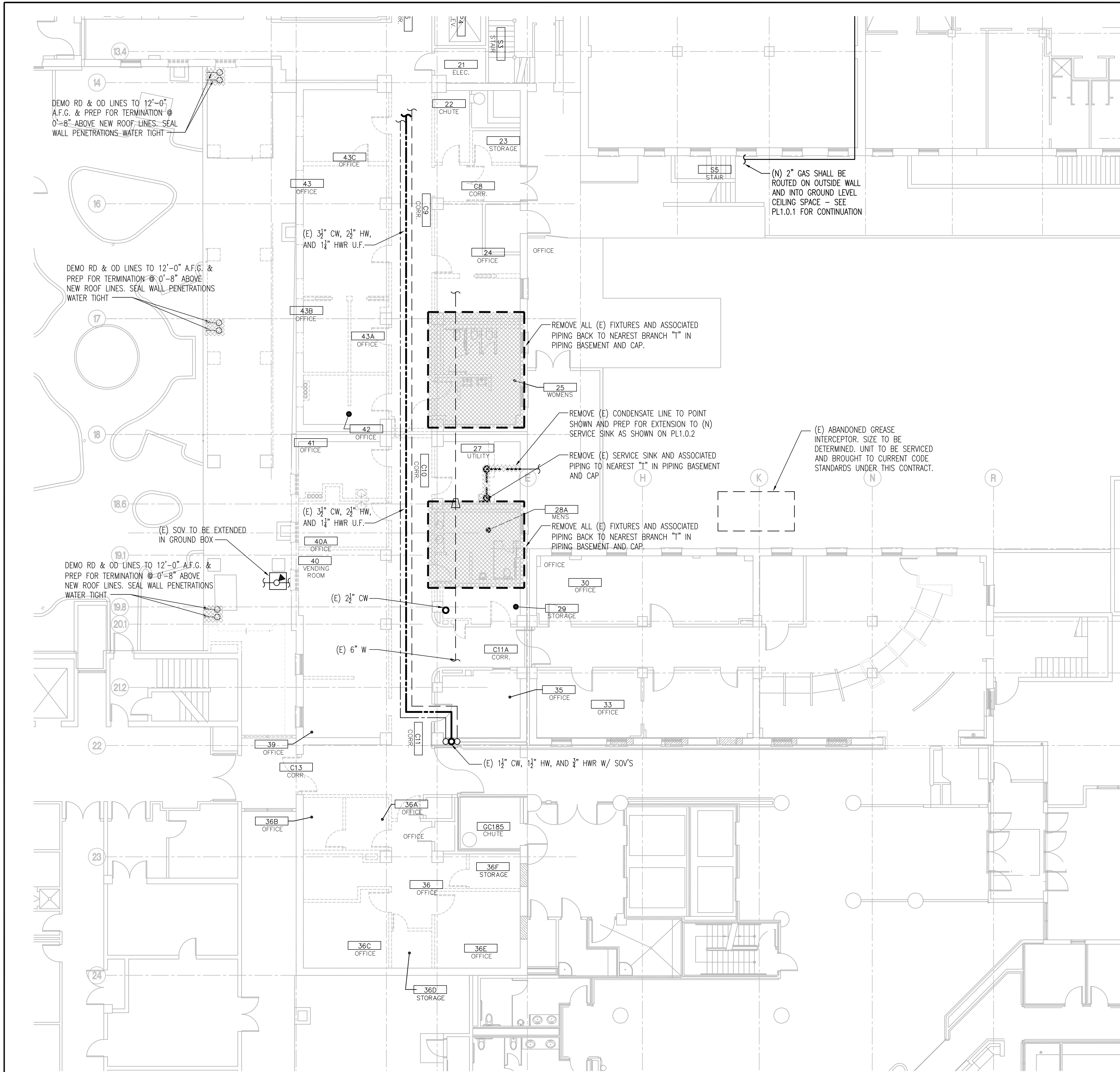


three eighths inch = one foot
one eighth inch = one foot
one quarter inch = one foot
three eighths inch = one foot
one half inch = one foot
three quarters inch = one foot
one inch = one foot
one and one half inches = one foot
two inches = one foot
three inches = one foot



PLUMBING GAS METER LOCATION - GROUND FLOOR
AREA 1-5

B
PD10.1

SCALE: 1/8" = 10'

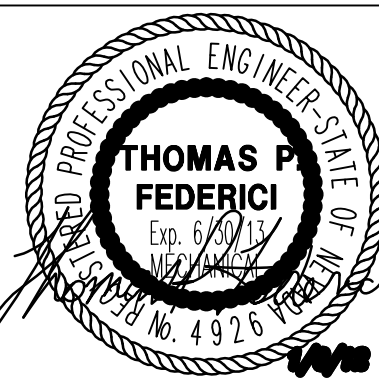
PLUMBING DEMOLITION PLAN - GROUND FLOOR
AREA 1-5

A
PD10.1

SCALE: 1/8" = 10'

CONSULTANTS:

DINTER
ENGINEERING CONFIDENCE
Airfield Electrical Mechanical
385 Gentry Way
Reno, NV 89502
Ph: 775.826.4044
Fax: 775.826.4190
www.dinter.com J-4217.6



ARCHITECT/ENGINEERS:

VMDA
vern martin design associates
(a Nevada Corporation)
Food Facilities Design
760 Robin St., Reno, Nevada 89509
P:(775) 240-2637 F:(775) 201-0066
E:vern@martinreno.com

VanWoert Bigotti
architects
1400 s. virginia st suite c
reno, nevada 89502
p: 775.328.1010
f: 775.328.1020
info@vwbarchitects.com

Drawing Title
PLUMBING
DEMOLITION
PLAN

Approved Project Director

Project Title
VA SIERRA NEVADA HEALTH CARE
SYSTEM - CANTEN RELOCATION
DESIGN - , RENO, NEVADA

Location
975 KIRMAN AVE, RENO, NEVADA 89502

Date
06 JAN, 2012

Checked
TPF

Drawn
EBW

Project Number
654-11-227
Building Number
1

Drawing Number
PD10.1
Dwg. - of -

Office of
Construction
and Facilities
Management

