



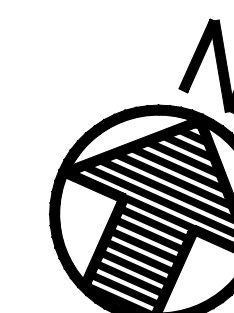
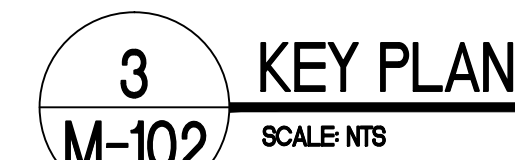
1. 16"x10" SUPPLY DUCT UP TO ROOF THROUGH EXISTING OPENING.
  2. 16"x12" EXHAUST DUCT UP TO ROOF THROUGH EXISTING OPENING.
  3. BOTTOM OF EXHAUST REGISTERS E1 AND E2 TO BE LOCATED 7" ABOVE FLOOR.
- CONTRACTOR SHALL REINSTALL EXISTING CEILING GRID AND RECENTLY REMOVED AFTER DUCT INSTALLATION. CONTRACTOR SHALL INSTALL NEW ARMSTRONG 704A 2X2 CEILING TILES.

1. ALL WORK MUST BE DONE IN ACCORDANCE WITH THE COATESVILLE VA MEDICAL CENTER'S INFECTION CONTROL PROGRAM. SEE SPECIFICATION 01 00 00, SECTION 1.7.
2. CONSTRUCTION DEBRIS SHALL BE HANDLED AS NOTED IN THE APPLICABLE SPECIFICATION SECTIONS. IN ADDITION CONTRACTOR SHALL INSURE THAT DURING REMOVAL DEBRIS IS PROPERLY SECURED, COMPLETELY ENCASED IN A CART, AND WRAPPED IN PLASTIC TO PREVENT SPILLAGE.
3. ALL DUCTWORK SHALL BE SUPPORTED BY THE CONCRETE ABOVE SEE DETAIL 2/M501.



1. 14 x 8 RETURN DUCT DOWN THROUGH EXISTING ROOF OPENING.
2. 16 x 10 SUPPLY DUCT DOWN THROUGH EXISTING ROOF OPENING.
3. 10 x 14 EXHAUST DUCT DOWN THROUGH EXISTING ROOF OPENING
4. MOUNT NEW ROOF TOP UNIT ON FULL PERIMETER ROOF CURB PER MANUFACTURERS RECOMMENDATIONS.
5. MOUNT NEW EXHAUST FAN ON NEW PREFABRICATED SUPPORT RAILS WITH VIBRATION ISOLATION. SUPPORT FRAME SHALL UTILIZE EXISTING ROOF SUPPORT PIERS.
6. SUPPORT NEW DUCTWORK WITH EQUIPMENT SUPPORT RAILS AS REQUIRED.
7. 7" TEN FOOT HIGH VELOCITY STACK WITH 6" REDUCER. PROVIDE GUY WIRE ANCHORS WITH TURNBUCKLES. SEE DETAIL 7/M-501
8. BAG-IN, BAG-OUT FILTER ENCLOSURE SHALL BE 14 GAUGE TYPE 304 STAINLESS STEEL WITH FACTORY DRILLED INLET/OUTLET DUCT CONNECTION FLANGES. PROVIDE WITH REMOVABLE WEATHER CAP AND GASKET SEAL. 4" MINIMUM CLEARANCE FOR FILTER CHANGE OUT. MOUNTED ON EQUIPMENT SUPPORT RAILS.
9. CONTRACTOR SHALL PROVIDE AND INSTALL A NEW INSULATED CAP COVERING THE EXISTING ROOF DUCT PENETRATION. CAP SHALL INCORPORATE NEW 2-HR RATED FIRE DAMPER AT THE PENETRATION POINT. SEE DETAIL 3/M501

1. ALL WORK ON ROOF SHALL BE COORDINATED WITH ROOFING CONTRACTOR TO ENSURE ROOFING WARRANTY IS MAINTAINED.
  2. ALL EQUIPMENT ON THE ROOF SHALL BE WEATHER PROOF AND SUITABLE FOR INSTALLATION OUTSIDE.
  3. PROTECT THE ROOF AT ALL TIMES TO PREVENT LEAKS DURING CONSTRUCTION.
  4. CONTRACTOR SHALL PROVIDE AND INSTALL A NEW INSULATED CAP COVERING THE EXISTING ROOF DUCT PENETRATION. CAP SHALL INCORPORATE NEW 2-HR. RATED FIRE DAMPERS AT THE PENETRATION POINT.
- SEE DETAIL 3/M501



FINAL CONSTRUCTION DOCUMENTS

[illegible]