

1 CONSTANT VOLUME, 100% OUTSIDE AIR STANDALONE ISOLATION ROOM RTU AND EXHAUST FAN

SEQUENCE OF OPERATION FOR CONSTANT VOLUME, 100% OUTSIDE AIR STANDALONE ISOLATION ROOM RTU AND EXHAUST FAN

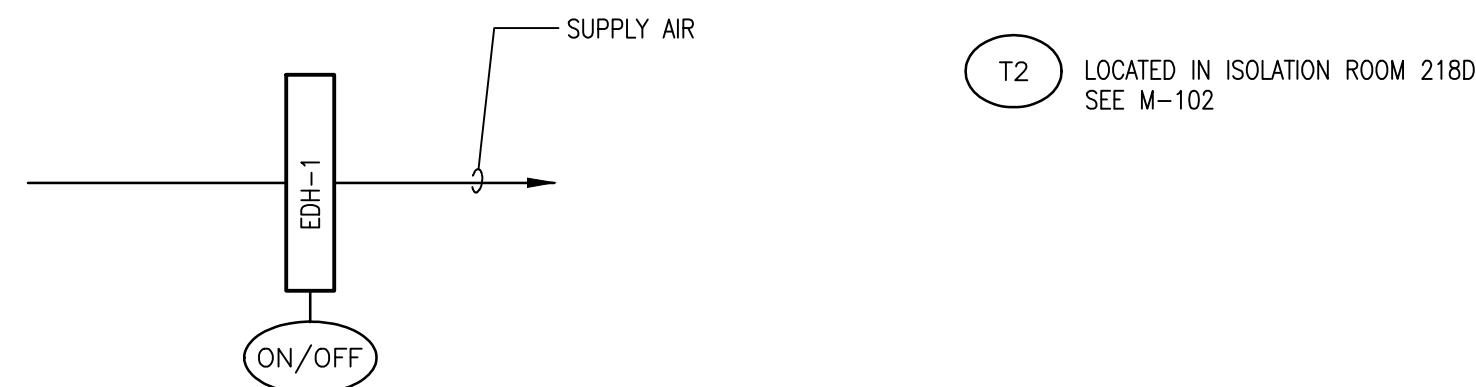
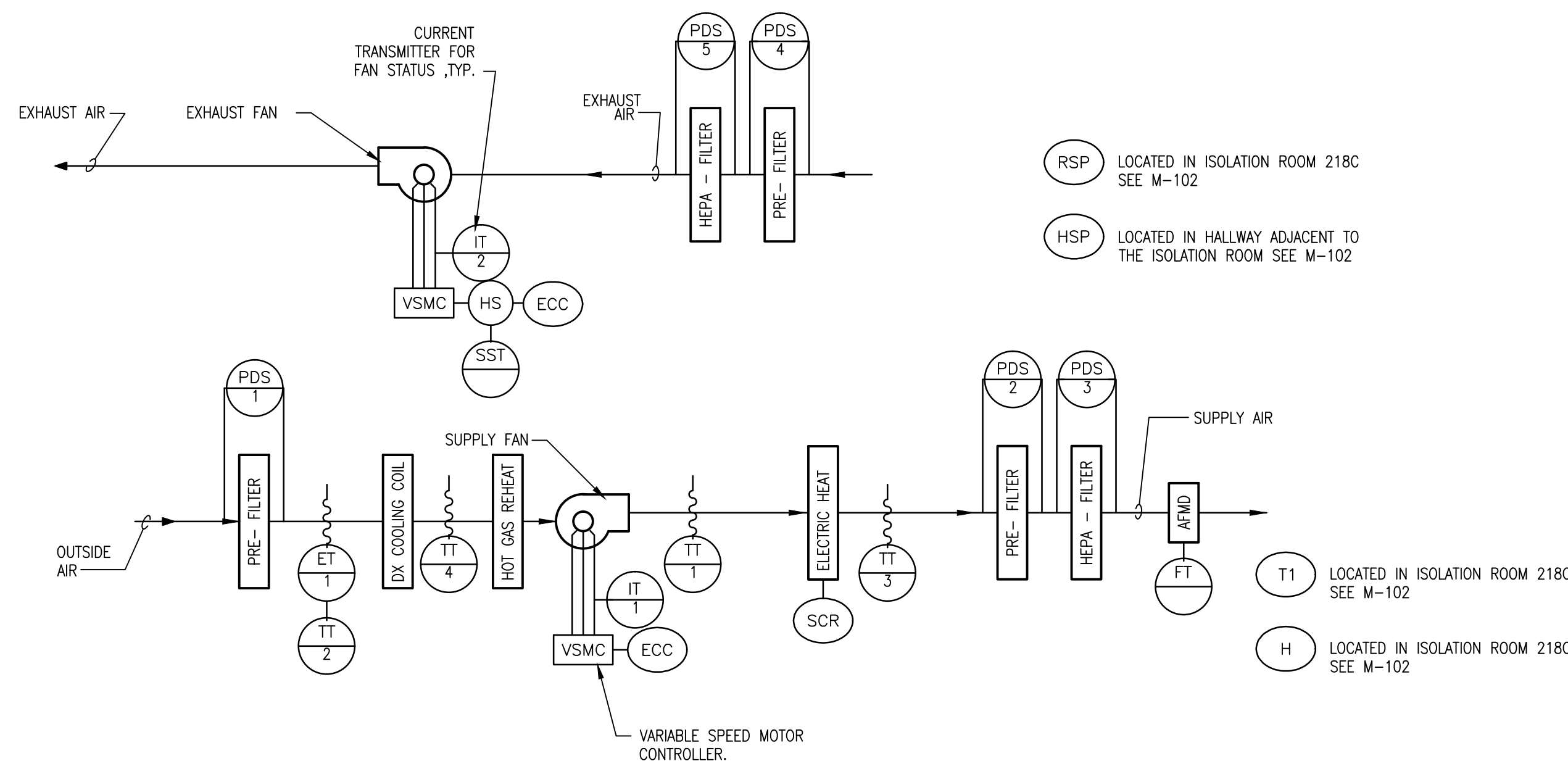
- GENERAL
- TEMPERATURE AND HUMIDITY CONTROL
- AIR FLOW CONTROL
- EMERGENCY CONSTANT SPEED OPERATION

SEQUENCE OF OPERATION FOR ELECTRIC DUCT HEATER REHEAT CONTROL

- TEMPERATURE CONTROL

POINTS LIST FOR CONSTANT VOLUME, 100% OUTSIDE AIR STANDALONE ISOLATION ROOM RTU, EXHAUST FAN, AND ELECTRIC DUCT HEATER

3 ELECTRIC DUCT HEATER



SYSTEM COMPONENT:	POINT ID	ABBREVIATION	POINT LEGEND		SYSTEM OUTPUTS		SYSTEM INPUTS		SYSTEM SOFTWARE/CONTROL		PAGE:
			BINARY	ANALOG	BINARY	ANALOG	ALARM PROCESSING	APPLICATION/FUNCTION			
SYSTEM:											
CONSTANT VOLUME, 100% OUTSIDE AIR STANDALONE ISOLATION RTU AND EXHAUST FAN											
Outside Air Enthalpy	AI-1	ET-1									
Outside Air Temperature	AI-2	TT-2									
Coil Leaving Air Temperature	AI-3	TT-4									
Hot Gas Air Temperature	AI-4	TT-1									
Discharge Air Temperature	AI-5	TT-3									
EXHAUST FAN STATUS	BI-1	IT-2									
SUPPLY FAN STATUS	BI-2	IT-1									
HUMIDITY HIGH LIMIT	BI-3	HHL									
SUPPLY FAN VSMC ALARM	BI-4	SF-ALA									
EXHAUST FAN VSMC ALARM	BI-5	EF-ALA									
EXHAUST FAN VSMC	AO-1	EF-SPD									
SUPPLY FAN VSMC	AO-2	SF-SPD									
Air Flow Measuring Device	AI-16	FT									
Pressure Differential 1	AI-6	PDS-1									
Pressure Differential 2	AI-7	PDS-2									
Pressure Differential 3	AI-9	PDS-3									
Pressure Differential 4	AI-10	PDS-4									
Pressure Differential 5	AI-11	PDS-5									
Space Temperature	AI-12	T1									
Space Humidity	AI-13	H									
Space Static Pressure 1	AI-14	HSP									
Space Static Pressure 2	AI-15	RSP									
Space Temperature	AI-17	T2									